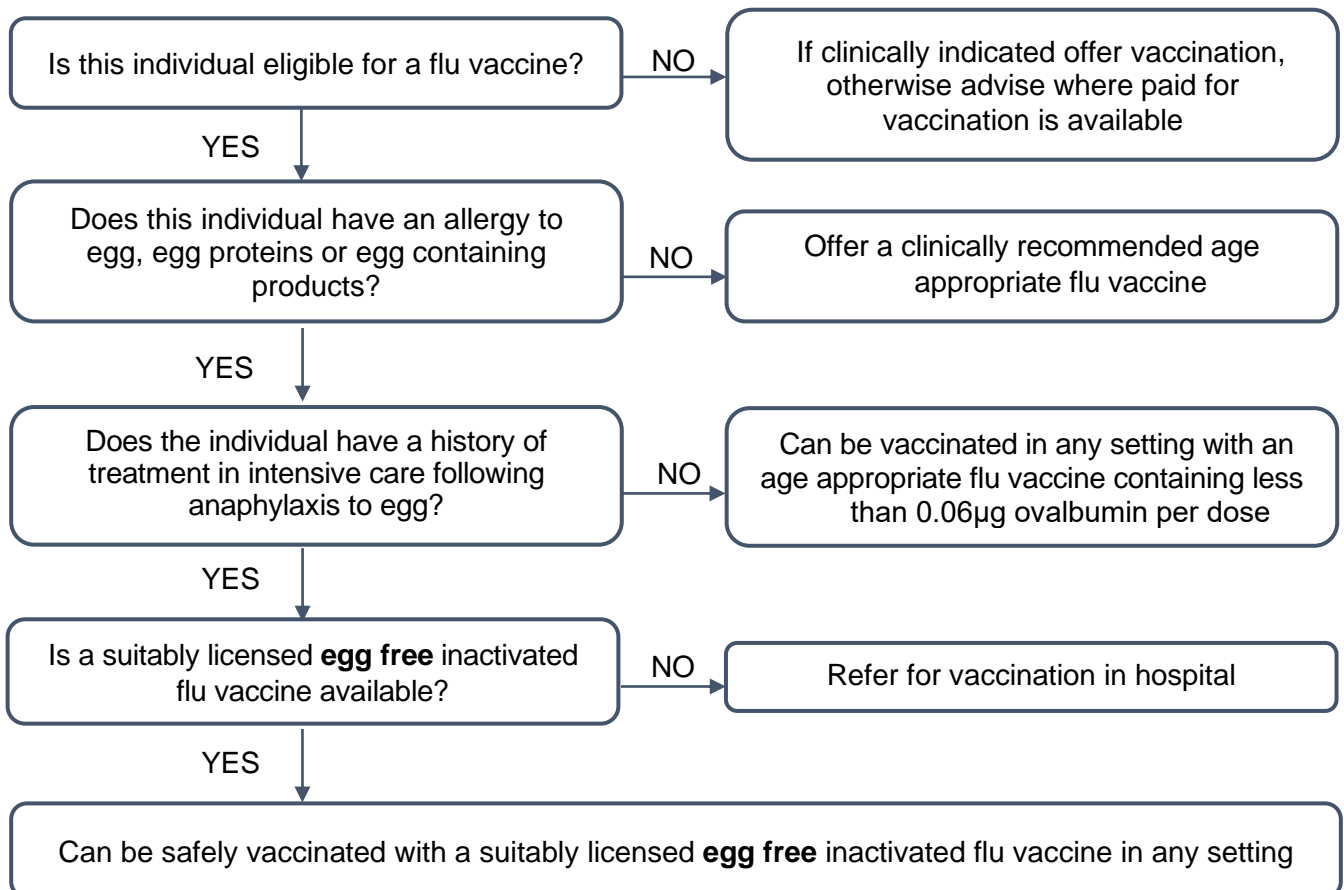




Management chart for influenza (flu) vaccination in egg allergic individuals

Individuals with an allergy to egg or egg proteins may be at increased risk of adverse reaction to some flu vaccines. Inactivated flu vaccines that have no or a very low ovalbumin content (<0.12 µg/ml – equivalent to <0.06 µg for a 0.5ml dose) are available and studies show that they may be used safely in individuals with egg allergy ([Green Book chapter 19](#)).

This management chart may be a useful aid to clinical decision making.



Influenza vaccines for 2022/23 Ovalbumin content chart can be found here:

<https://www.gov.uk/government/publications/influenza-vaccines-marketed-in-the-uk>

Always check Summary of Product Characteristics (SPC) to ensure vaccine suitability on an individual patient basis. SPCs are available here: <https://www.medicines.org.uk/emc/>

The Green Book Chapter 19 – Influenza (updated September 2022) contains additional content on egg allergy and flu vaccine advice. Available at: <https://www.gov.uk/government/publications/influenza-the-green-book-chapter-19>

Welsh Government. The National Influenza Immunisation Programme:

[The national influenza immunisation programme 2022 to 2023 \(WHC/2022/010\) | GOV.WALES](#)

Joint Committee on Vaccination and Immunisation (JCVI) advice on influenza vaccines for the 2022/23 influenza season. Available at: [JCVI Statement on Influenza Vaccines 2022-23.pdf \(nitag-resource.org\)](#)