

Vaccine Uptake in Children in Wales

COVER Annual Report 2023

Data for the year ending 31st March 2023



Key points

- In 2022/23 uptake of the '6 in 1' (DTaP/IPV/Hib/HepB) and pneumococcal conjugate vaccinations in one year old children in Wales was 94.5% and 95.9% respectively.
- MenB vaccine uptake was 93.8% for two doses, and uptake of two doses of rotavirus vaccine was 91.7% at one year.
- MMR uptake was 92.9% for the first dose at two years.
- MenB uptake was 91.9% for the complete course at two years,
- By their fourth birthday, 84.5% of children were up to date with recommended immunisations.
- MMR dose two uptake in children at five years of age was 89.5%, and uptake of the pre-school '4 in 1' (DTaP/IPV) booster in this age-group was 90.0%.
- Human Papillomavirus (HPV) vaccine uptake in children turning 14 years of age during the 2022/23 school year (School Year 9) was 69.1% for the first dose. Uptake of the complete two-dose course in children turning 15 years of age (School Year 10) was 70.8%.
- MMR uptake, for a full two-dose course, was 92.0% and 91.6% for teenagers turning 15 and 16 years of age respectively during the 2022/23 school year.
- MenACWY vaccine uptake in teenagers turning 15 and 16 years of age during the 2022/23 school year was 73.9% and 82.4%.

Background

These annual results for 2022/23 are for one year cohorts of children living in Wales as at 31/03/2023 and reaching their first, second, fourth and fifth birthdays between 01/04/2022 and 31/03/2023. Uptake of vaccinations in those reaching 15 and 16 years of age are presented by school year.

Inequalities in uptake of routine vaccinations at four years of age are also presented. National quintiles of deprivation were calculated according to the Lower Super Output Area (LSOA) rankings contained in the Welsh Index of Multiple Deprivation (WIMD 2019). Deprivation rankings contained in the WIMD are relative, not absolute values, and they refer to an overall composite measure of factors related to deprivation for all residents in the LSOA as a whole, not the circumstances of individual residents within the LSOA.

Public Health Wales Vaccine Preventable Disease Programme and Communicable Disease Surveillance Centre, working with Powys Teaching Health Board and the NHS Wales Informatics Service, carried out a COVER data quality assurance project at the end of 2018. This project led to improvements in completeness of vaccination data in the national COVER dataset. The impact is that reported vaccination uptake has increased; primarily in children aged four years and older. National trends in this report for 2015 – 2018 are updated to take into account these changes.

Childhood Vaccinations in Wales Annual Report 2023

1 year



2 years



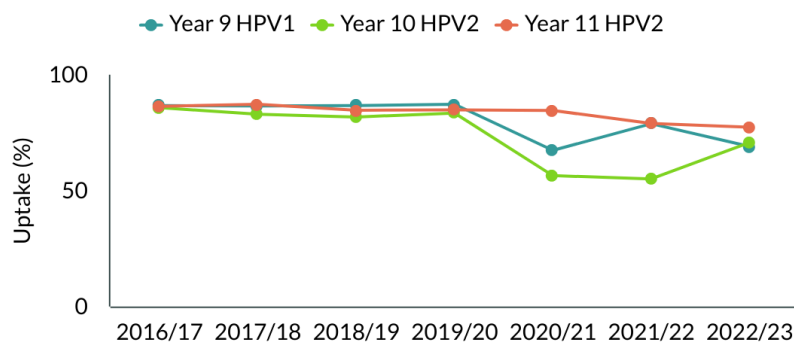
Figures presented are for 3 doses of 6in1; 2 doses of MenB; 1 dose of Rotavirus; 1 dose of PCV at one year of age. For two year olds, it is 1 dose of MMR, 3rd dose of PCV and the HibMenC booster.

Up to date with vaccinations at:



Children who are up to date with their Hib/MenC booster, '4 in 1' DTaP/IPV pre-school booster and MMR vaccines.

HPV Vaccine Uptake



Coverage is lower compared to previous years. Catch up sessions were undertaken following the disruption of school based vaccination sessions during the 2020/21 academic year due to school closures.

A complete two-dose course in 2016/17 to 2020/21 school year 10 girls. From 2021/22 a complete two-dose course in school year 10 girls and boys is presented. Uptake data are as at end of March for each academic year presented, final uptake figures are likely to be higher for each cohort as vaccination offers continue throughout the academic year.

16 years



GIG
CYMRU
NHS
WALES

Iechyd Cyhoeddus
Cymru
Public Health
Wales

© Public Health Wales NHS Trust

Findings

1. '6 in 1' DTaP/IPV/Hib/HepB¹ vaccine uptake (all three doses) in children reaching their first birthday decreased slightly to 94.5%, compared to 95.2% in the previous year. Uptake ranged by health board (HB) from 93.2% (Cardiff and Vale) to 96.8% (Cwm Taf Morgannwg) and by local authority (LA) from 91.4% (Newport) to 97.7% (Bridgend). Eight of the 22 LAs achieved the 95% target (Figures 1, 2, 5, 7 and Tables 2, 3).
2. Uptake of pneumococcal conjugate vaccination (PCV) in children reaching their first birthday was 95.9%, ranging by HB from 94.5% (Cardiff and Vale) to 97.8% (Cwm Taf Morgannwg) and by LA from 93.8% (Newport) to 98.4% (Bridgend) (Figures 1, 2 and Tables 2, 3). This is the second full annual cohort of children to be on the new one dose primary PCV course [1].
3. Rotavirus vaccine uptake of two doses in children reaching their first birthday decreased slightly to 91.7%, compared to the previous year at 93.2%. Uptake ranged by HB from 88.9% (Cardiff & Vale) to 95.3% (Cwm Taf Morgannwg) and by LA from 87.0% (Newport) to 95.7% (Bridgend) (Figures 1, 2 and Tables 2, 3).
4. Meningococcal serotype B vaccination (MenB) uptake of two doses in children at one year of age was 93.8%, ranging by HB from 91.6% (Cardiff and Vale) to 96.5% (Cwm Taf Morgannwg) and by LA from 90.2% (Newport) to 95.7% (Bridgend) (Table 3).
5. MMR uptake of one dose by two years of age decreased to 92.9%, compared to 94.2% in the previous year. Uptake ranged by HB from 89.3% (Cardiff and Vale) to 95.1% (Cwm Taf Morgannwg) and by LA from 88.9% (Cardiff) to 96.4% (Bridgend). One HB achieved the target uptake of 95%, and 6 out of 22 LAs exceeded the 95% target (Figures 1, 5, 8 and Tables 2, 4).
6. Pneumococcal Conjugate Vaccine (PCVf) uptake of the final dose by two years of age was 92.4%. Uptake by HB ranged from 88.1% (Cardiff and Vale) to 95.2% (Cwm Taf Morgannwg) and by LA from 87.5% (Cardiff) to 96.6% (Bridgend) (Figure 2 and Tables 2, 4).
7. Hib/MenC booster uptake by two years of age was 92.2%, ranging by HB from 88.2% (Cardiff and Vale) to 94.8% (Cwm Taf Morgannwg) and by LA from 87.6% (Cardiff) to 96.2% (Bridgend) (Figures 1, 2 and Tables 2, 4).
8. MenB vaccine uptake of a complete course in children at two years of age was 91.9%, ranging by HB from 87.0% (Cardiff and Vale) to 94.6% (Cwm Taf Morgannwg), and by LA from 86.1% (Cardiff) to 96.3% (Bridgend).
9. Hib/MenC booster coverage in children by their fourth birthday was 93.9% and ranged by HB from 91.0% (Cardiff and Vale) to 95.8% (Powys) (Table 5).
10. '4 in 1' DTaP/IPV 'pre-school booster' uptake in children by four years of age was 85.8%, this ranged by HB from 82.6% (Cardiff and Vale) to 91.0% (Powys) (Table 5).
11. MMR vaccine uptake of a complete two dose course in children by four years of age was 85.6%, this ranged by HB from 82.1% (Cardiff and Vale) to 91.1% (Powys) (Table 5).
12. The percentage of children who were up to date with their Hib/MenC booster, '4 in 1' DTaP/IPV pre-school booster and MMR vaccines by four years of age was 84.5%. This ranged by HB from 80.5% (Cardiff and Vale) to 90.3% (Powys) and by LA from 79.1% (Newport) to 92.0% (Anglesey) (Figure 4 and Tables 1, 2, 5).
13. The percentage of children who were up to date with their routine vaccinations by four years of age varied according to the national quintile of deprivation of the LSOA in which they resided. Nationally, the percentage of children up to date with their routine immunisations by four years of age ranged from 78.4% in the most deprived quintile of LSOAs to 89.6% in the least deprived quintile of LSOAs. The difference in uptake between the least deprived quintile and the most deprived quintile was 11.2 percentage points; this

¹ DTaP/IPV/Hib/HepB vaccine protects against diphtheria, tetanus, pertussis (Whooping Cough), polio, Hib and Hepatitis B infection.

is a widening of the inequality gap compared to 2021/22 (8.5 percentage points) (Figures 11, 12 and Table 6).

14. MMR uptake of two doses in children at five years of age was 89.5%, ranging by HB from 86.9% (Cardiff and Vale) to 91.7% (Betsi Cadwaladr). Coverage of one dose of MMR in children at five years of age was 95.2% and ranged by HB from 93.9% (Cardiff & Vale) to 96.5% (Cwm Taf Morgannwg) (Figures 1, 2, 6, 9 and Tables 2, 7).
15. '4 in 1' DTaP/IPV 'pre-school booster' uptake in children reaching their fifth birthday this year was 90.0% (Figures 2, 6, 10 and Tables 2, 7).
16. HPV vaccine uptake in the full 2022/23 School Year 9 group (reaching their 14th birthday between 01/09/22 and 31/08/23) was 69.1%, for girls only uptake was 72.8%. This is a decrease compared to the previous years' cohort, where uptake was 78.9%. Uptake ranged by HB from 53.6% (Cardiff & Vale) to 85.7% (Swansea Bay) and by LA from 50.2% (Cardiff) to 86.3% (Neath Port Talbot) (Figure 13 and Table 8).
17. MMR coverage of two doses in teenagers turning 15 years of age between 01/09/22 and 31/08/23 was 92.0%, ranging by HB from 90.0% (Hywel Dda) to 94.3% (Cwm Taf Morgannwg) and by LA from 88.0% (Pembrokeshire) to 95.3% (Caerphilly). Coverage of one dose of MMR in 15 year olds was 95.0%, ranging by LA from 90.9% (Monmouthshire) to 97.5% (Caerphilly). A breakdown by sex indicates that 92.4% of girls had received a full (two MMR doses) course of immunisation against rubella and coverage of one dose was 95.2% (Figure 13 and Table 9).
18. Td/IPV 'teenage booster' uptake in teenagers reaching 15 years of age between 01/09/22 and 31/08/23 was 73.8%. Uptake ranged by HB from 63.9% (Aneurin Bevan) to 84.8% (Swansea Bay) and by LA from 58.4% (Newport) to 85.4% (Swansea) (Figure 13 and Table 9).
19. Coverage of MenACWY vaccine in the 2022/23 School Year 10 group is currently 73.9%. Coverage in the 2022/23 School Year 11 group is currently 82.4% (Figure 13, Table 9 and 10).
20. MMR coverage of two doses in teenagers turning 16 years of age during the 2022/23 school year was 91.6%, ranging by HB from 89.0% (Hywel Dda) to 93.5% (Cwm Taf Morgannwg) and by LA from 86.8% (Pembrokeshire) to 95.3% (Torfaen). Coverage of one dose of MMR in 16 year olds was 94.9%, ranging by LA from 91.7% (Monmouthshire) to 98.3% (Torfaen). A breakdown by sex indicates that 92.1% of girls had received a full (two MMR doses) course of immunisation against rubella and coverage of one dose was 95.3% (Table 10).
21. Td/IPV 'teenage booster' uptake in teenagers reaching 16 years during the 2022/23 school year was 82.3%. Uptake ranged by HB from 75.3% (Cardiff & Vale) to 89.5% (Swansea Bay) and by LA from 73.8% (Cardiff) to 89.9% (Swansea) (Table 10).
22. Uptake of hepatitis B immunisation in babies at risk of perinatal infection, extracted from the Public Health Wales All Wales Neonatal Hepatitis B immunisation database, is presented in Table 11. The database was developed to assist the Public Health Wales Health Protection Team in the monitoring and follow up of hepatitis B immunisation of babies born to hepatitis B positive mothers and to provide a source for statistics on uptake of hepatitis B immunisation in this group. Uptake of three doses in children who were at risk of perinatal infection and reached their first birthday in the year ending 31st March 2023 was 100.0%. Uptake of four doses in children who were at risk of perinatal infection and reached their second birthday in the year ending 31st March 2023 was 74.2%. Uptake of four doses in children who were at risk of perinatal infection and reached their fifth birthday in the year ending 31st March 2023 was 85.7%.

Comment

Some of the children in this report for the April 2022 to March 2023 year would have been due their immunisations during the COVID-19 pandemic, this is especially true for five-year olds (who would routinely be called for preschool vaccinations at three and half years of age. Although uptake in younger children remains broadly positive, there has been a slight decreasing trend over the previous two years [2].

For the annual cohort of one year olds, uptake of the '6 in 1' vaccine dropped slightly below 95% to 94.5% but uptake of the pneumococcal conjugate vaccine remained above 95%, although uptake continues to vary between health board areas.

Uptake of two doses of Men B vaccine at one year of age was below 95% at 93.8%; with uptake of a complete three-dose course in two year olds slightly lower (91.9%). Uptake of MMR1 at two years of age remains below 95% for the full year cohort with uptake in the most recent quarterly cohort (Jan to Mar 2023) 93.4% and uptake in the first quarterly cohort (Apr to Jun 2022) 93.5% [2].

The proportion of children who were up to date with their routine immunisations by four years of age decreased this year to 84.5%, from 87.0%. Of all the immunisations that are included in this composite measure, uptake of the second dose of MMR remains the lowest (85.6%), followed by the '4 in 1' preschool booster (85.8%) then Hib/MenC booster (93.9%).

The reported inequality gap in immunisation coverage between four year olds residing in the most and least deprived areas increased compared to 2021/22, at 11.2 percentage points. Coverage has decreased across all quintiles, although the greatest decrease was seen in the most deprived quintile. Further work is needed to identify the root cause of these inequalities and identify interventions to reduce the gap.

Coverage of immunisations in teenagers is lower compared to previous years. Catch up sessions were undertaken following the disruption of school-based vaccination sessions during the 2020/21 academic year due to school closures. The 2022/23 School Year 9 cohort was the third to include boys as part of the HPV vaccination programme, uptake of one dose in these children is currently 69.1% (72.8% for girls and 65.6% for boys) [3]. Of all the vaccinations given to teenagers, HPV uptake continues to be the most impacted by school self-isolation measures due to the COVID-19 pandemic. Uptake data are as at end of March for each academic year presented, final uptake figures are likely to be higher for each cohort as vaccination offers continue throughout the academic year.

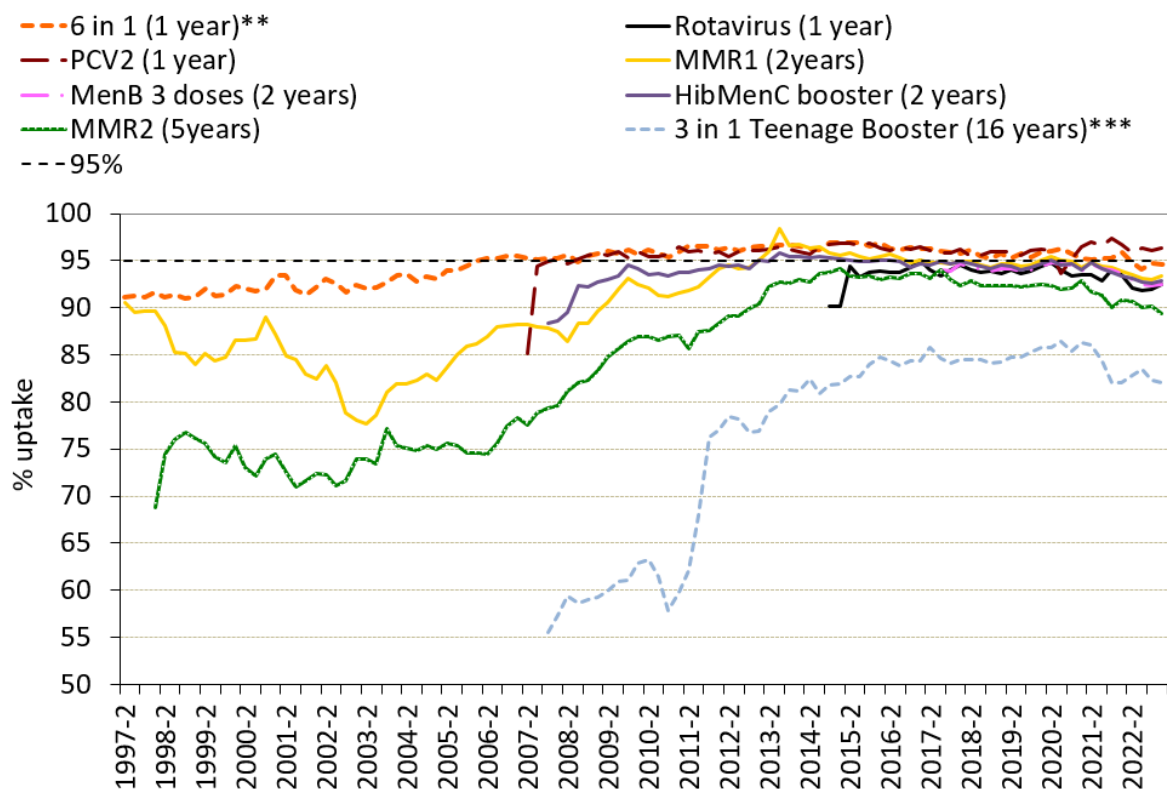
On World Polio Day, 24th October 2022, Welsh Government released a Welsh Health Circular (WHC) outlining the need for an urgent polio catch-up programme for children under 5 years old [4]. This was in response to an incident in North London where type 2 vaccine-derived Polio virus has been found in sewage samples [5]. Coverage of three doses of polio containing vaccine at one year of age was over the WHO target of 95% from 2007 to 2021, but has decreased in recent quarters. This urgent catch-up programme was extended until the end of March 2023 [6]. Currently, coverage remains below 95% in this group, however it is possible that some data entry and data cleansing activities were still underway when data for this report were extracted.

There has been an increase in cases of measles reported in England during the first quarter of 2023 [7]. **Vaccination status checking and catch-up of routine vaccinations at every opportunity, especially around school entry and alongside school vaccination sessions, remains a priority in averting large outbreaks of vaccine-preventable infections.**

- [1] Welsh Health Circular- Changes to the infant pneumococcal conjugate vaccine (PCV) immunisation schedule. Available from: <https://gov.wales/sites/default/files/publications/2019-12/changes-to-the-infant-pneumococcal-conjugate-vaccine-immunisation-schedule.pdf>
- [2] Public Health Wales Health Protection Division. Vaccine uptake in Children in Wales, January to March 2023: COVER report 146, May 2023. Cardiff, Public Health Wales. <https://phw.nhs.wales/topics/immunisation-and-vaccines/cover-national-childhood-immunisation-uptake-data/>
- [3] Welsh Health Circular- Changes to the HPV immunisation programme from the academic school year starting September 2019. Available from: [http://www.gpone.wales.nhs.uk/sitesplus/documents/1000/WHC%202019%2020%20%27Canges%20to%20the%20Human%20Papillomavirus%20\(HPV\)%20Immunisation%20Programme%27%20-%20English.pdf](http://www.gpone.wales.nhs.uk/sitesplus/documents/1000/WHC%202019%2020%20%27Canges%20to%20the%20Human%20Papillomavirus%20(HPV)%20Immunisation%20Programme%27%20-%20English.pdf)
- [4] Welsh Health Circular- Urgent polio catch-up programme for children under 5 years old. October 2022. Available from: <https://gov.wales/sites/default/files/publications/2022-10/urgent-polio-catch-up-programme-for-children-under-5-years-old.pdf>
- [5] Joint Committee on Vaccination and Immunisation (JCVI). Statement on vaccination strategy for the ongoing polio incident, July 2022. Available from: <https://www.gov.uk/government/publications/vaccination-strategy-for-ongoing-polio-incident-jcvi-statement/joint-committee-on-vaccination-and-immunisation-statement-on-vaccination-strategy-for-the-ongoing-polio-incident>
- [6] Welsh Health Circular- Urgent polio catch-up programme for children under 5 years old. November 2022. Available from: [urgent-polio-catch-up-programme-for-children-under-5-years-old-whc-2022-029_0.pdf](https://gov.wales/sites/default/files/publications/2022-11/urgent-polio-catch-up-programme-for-children-under-5-years-old-whc-2022-029_0.pdf)
- [7] UK Health Security Agency. Research and analysis: HPR volume 17 issue 5: news (4 May 2023), May 2023. Available from: <https://www.gov.uk/government/publications/health-protection-report-volume-17-2023/hpr-volume-17-issue-5-news-4-may-2023>

Report prepared by Public Health Wales Vaccine Preventable Disease Programme and Communicable Disease Surveillance Centre. Data for this report was provided by NHS Wales Informatics Service from Children and Young Persons Integrated System (CYPrIS). The data was sourced from Community Child Health databases maintained by local Child Health Office staff in Trusts throughout Wales based on regular returns from doctors and nurses who immunise or advise on immunisation. Uptake data presented throughout are for LHB resident population, not for LHB GP practice populations. The maps, graphs and Table 2 are best viewed in colour

Figure 1. Percentage uptake of childhood immunisations in Wales, quarter 2 1997 to quarter 1 2023*.

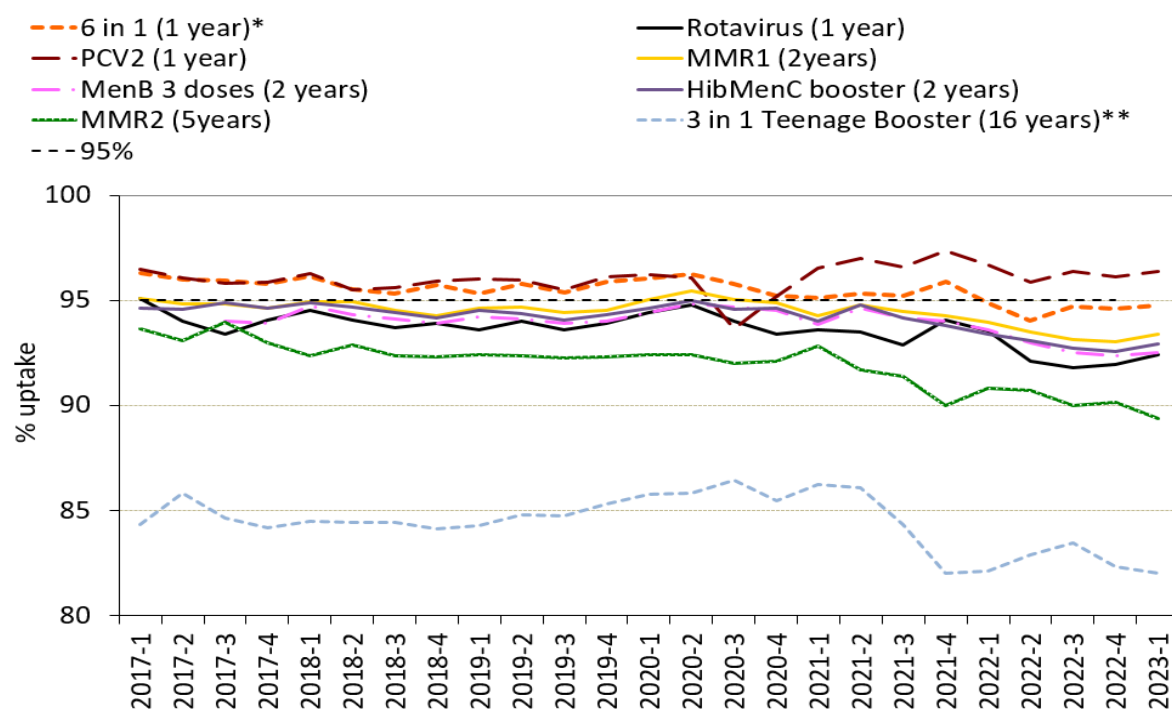


*Uptake data for quarter 3 2014 to quarter 4 2014 presented here are based on estimates calculated in August 2015, rather than published data, due to data quality problems affecting reported uptake of some immunisations in reports published during this period.

**Uptake of pertussis used as a proxy.

***Teenage booster dose of diphtheria, tetanus and polio (diphtheria used as proxy).

Figure 2. Percentage uptake of childhood immunisations in Wales, quarter 1 2017 to quarter 1 2023**



* Uptake of pertussis used as proxy.

** Teenage booster dose of diphtheria, tetanus and polio (diphtheria used as proxy).

***Uptake data for MMR2 at 5 years and the "3 in 1" teenage booster at 16 years from 2015 Q1 to 2018 Q3 are based on estimates calculated in February 2019, rather than published data. This is due to improvements in data quality made during early 2019.

Figure 3. Summary of uptake rates for selected immunisations in resident children reaching their 1st, 2nd and 5th birthday between 01/04/22 and 31/03/23 and resident on 31/03/23.

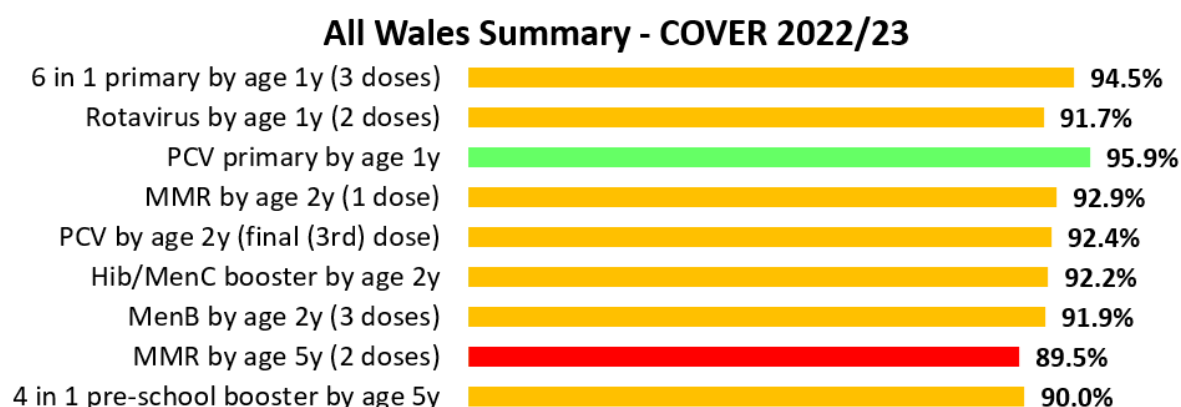


Figure 4. Percentage of resident children reaching their 4th birthday between 01/04/22 and 31/03/23 and are up to date with all scheduled vaccines² by Health Board.



Table 1. Percentage of resident children reaching their 4th birthday and are up to date with all scheduled vaccines by Health Board, annually 2018/19 to 2022/23.

Area	Up to date in schedule				
	2018/19	2019/20	2020/21	2021/22	2022/23
Aneurin Bevan UHB	84.1	86.6	86.6	86.5	83.7
Betsi Cadwaladr UHB	89.7	90.3	90.1	88.5	87.3
Cardiff and Vale UHB	86.8	86.7	84.5	84.2	80.5
Cwm Taf Morgannwg UHB	87.9	88.6	90.1	88.8	86.6
Hywel Dda UHB	86.3	86.7	86.1	86.7	84.2
Powys Teaching HB	88.9	90.2	90.4	89.2	90.3
Swansea Bay UHB	88.0	87.6	87.0	86.9	82.8
Wales	87.2	88.0	87.6	87.0	84.5

² Completed '4 in 1' pre-school booster, the Hib/MenC booster and second MMR dose by four years of age.

Table 2. Summary table with uptake of selected immunisations in resident children reaching their 1st, 2nd, 4th and 5th birthday between 01/04/2022 and 31/03/2023 and resident on 31/03/2023.

Area	Age 1 year								Age 2 years								Age 4 years			Age 5 years						
	Resident children (n)	6 in 1 ¹ (n)	(%)	MenB ² (n)	(%)	PCV (n)	(%)	Rotavirus (n)	(%)	Resident children (n)	MMR1 (n)	(%)	PCV ³ (n)	(%)	MenB (n)	(%)	Hib/MenC booster (n)	(%)	Resident children (n)	Up to date in schedule ⁴ (n)	(%)	Resident children (n)	MMR2 (n)	(%)	4 in 1 ¹ (n)	(%)
Aneurin Bevan University HB																										
Blaenau Gwent LA	719	682	94.9	682	94.9	692	96.2	660	91.8	666	630	94.6	629	94.4	630	94.6	623	93.5	718	618	86.1	763	685	89.8	690	90.4
Caerphilly LA	1694	1606	94.8	1611	95.1	1640	96.8	1552	91.6	1605	1540	96.0	1529	95.3	1527	95.1	1532	95.5	1894	1638	86.5	2018	1884	93.4	1889	93.6
Monmouthshire LA	751	721	96.0	722	96.1	730	97.2	699	93.1	814	779	95.7	773	95.0	771	94.7	771	94.7	845	753	89.1	880	812	92.3	814	92.5
Newport LA	1976	1807	91.4	1783	90.2	1854	93.8	1720	87.0	1891	1713	90.6	1701	90.0	1687	89.2	1687	89.2	2027	1604	79.1	2135	1828	85.6	1841	86.2
Torfaen LA	949	879	92.6	885	93.3	905	95.4	844	88.9	941	864	91.8	861	91.5	860	91.4	859	91.3	1009	819	81.2	1051	931	88.6	941	89.5
Health Board Total	6089	5695	93.5	5683	93.3	5821	95.6	5475	89.9	5917	5526	93.4	5493	92.8	5475	92.5	5472	92.5	6493	5432	83.7	6847	6140	89.7	6175	90.2
Betsi Cadwaladr University HB																										
Anglesey LA	591	569	96.3	569	96.3	576	97.5	557	94.2	593	566	95.4	568	95.8	565	95.3	565	95.3	637	586	92.0	705	666	94.5	668	94.8
Conwy LA	963	889	92.3	890	92.4	917	95.2	874	90.8	950	866	91.2	869	91.5	867	91.3	867	91.3	1044	872	83.5	1076	970	90.1	971	90.2
Denbighshire LA	968	905	93.5	899	92.9	921	95.1	858	88.6	943	872	92.5	866	91.8	860	91.2	867	91.9	987	834	84.5	1024	919	89.7	924	90.2
Flintshire LA	1445	1373	95.0	1370	94.8	1399	96.8	1336	92.5	1454	1362	93.7	1360	93.5	1356	93.3	1360	93.5	1527	1326	86.8	1695	1565	92.3	1571	92.7
Gwynedd LA	1053	999	94.9	986	93.6	997	94.7	970	92.1	1018	945	92.8	938	92.1	932	91.6	938	92.1	1098	978	89.1	1149	1051	91.5	1064	92.6
Wrexham LA	1259	1206	95.8	1204	95.6	1223	97.1	1173	93.2	1257	1195	95.1	1194	95.0	1188	94.5	1188	94.5	1382	1230	89.0	1537	1422	92.5	1424	92.6
Health Board Total	6279	5941	94.6	5918	94.3	6033	96.1	5768	91.9	6215	5806	93.4	5795	93.2	5768	92.8	5785	93.1	6675	5826	87.3	7186	6593	91.7	6622	92.2
Cardiff and Vale University HB																										
Cardiff LA	3864	3585	92.8	3519	91.1	3640	94.2	3401	88.0	3652	3245	88.9	3195	87.5	3145	86.1	3199	87.6	4006	3178	79.3	4136	3539	85.6	3563	86.1
Vale of Glamorgan LA	1262	1194	94.6	1175	93.1	1204	95.4	1157	91.7	1265	1146	90.6	1135	89.7	1133	89.6	1139	90.0	1473	1235	83.8	1522	1377	90.5	1385	91.0
Health Board Total	5126	4779	93.2	4694	91.6	4844	94.5	4558	88.9	4917	4391	89.3	4330	88.1	4278	87.0	4338	88.2	5479	4413	80.5	5658	4916	86.9	4948	87.5
Cwm Taf Morgannwg University HB																										
Bridgend LA	1405	1372	97.7	1373	97.7	1382	98.4	1344	95.7	1354	1305	96.4	1308	96.6	1304	96.3	1303	96.2	1544	1369	88.7	1557	1427	91.7	1434	92.1
Merthyr Tydfil LA	618	596	96.4	595	96.3	603	97.6	591	95.6	613	571	93.1	573	93.5	570	93.0	568	92.7	697	570	81.8	736	649	88.2	654	88.9
Rhondda Cynon Taf LA	2315	2233	96.5	2219	95.9	2259	97.6	2200	95.0	2362	2243	95.0	2241	94.9	2223	94.1	2231	94.5	2608	2261	86.7	2655	2409	90.7	2416	91.0
Health Board Total	4338	4201	96.8	4187	96.5	4244	97.8	4135	95.3	4329	4119	95.1	4122	95.2	4097	94.6	4102	94.8	4849	4200	86.6	4948	4485	90.6	4504	91.0
Hywel Dda University HB																										
Carmarthenshire LA	1595	1501	94.1	1492	93.5	1531	96.0	1483	93.0	1718	1584	92.2	1578	91.9	1574	91.6	1574	91.6	1867	1538	82.4	1946	1717	88.2	1723	88.5
Ceredigion LA	534	503	94.2	500	93.6	510	95.5	493	92.3	538	506	94.1	505	93.9	498	92.6	502	93.3	586	518	88.4	606	538	88.8	541	89.3
Pembrokeshire LA	1055	992	94.0	990	93.8	1019	96.6	985	93.4	1025	954	93.1	950	92.7	947	92.4	948	92.5	1145	972	84.9	1227	1081	88.1	1087	88.6
Health Board Total	3184	2996	94.1	2982	93.7	3060	96.1	2961	93.0	3281	3044	92.8	3033	92.4	3019	92.0	3024	92.2	3598	3028	84.2	3779	3336	88.3	3351	88.7
Powys Teaching HB																										
Health Board Total	1077	1020	94.7	1019	94.6	1028	95.5	995	92.4	1063	990	93.1	993	93.4	985	92.7	987	92.9	1211	1093	90.3	1237	1118	90.4	1130	91.4
Swansea Bay University HB																										
Neath Port Talbot LA	1305	1241	95.1	1240	95.0	1259	96.5	1228	94.1	1303	1228	94.2	1221	93.7	1223	93.9	1217	93.4	1431	1206	84.3	1545	1390	90.0	1400	90.6
Swansea LA	2190	2077	94.8	2022	92.3	2081	95.0	2020	92.2	2117	1966	92.9	1949	92.1	1926	91.0	1931	91.2	2460	2017	82.0	2589	2278	88.0	2286	88.3
Health Board Total	3495	3318	94.9	3262	93.3	3340	95.6	3248	92.9	3420	3194	93.4	3170	92.7	3149	92.1	3148	92.0	3891	3223	82.8	4134	3668	88.7	3686	89.2
Unknown	13	13	100.0	13	100.0	13	100.0	13	100.0	18	17	94.4	15	83.3	15	83.3	15	83.3	9	8	88.9	6	4	66.7	4	66.7
Wales Total	29601	27963	94.5	27758	93.8	28383	95.9	27153	91.7	29160	27087	92.9	26951	92.4	26786	91.9	26871	92.2	32205	27223	84.5	33795	30260	89.5	30420	90.0

¹ Uptake of pertussis used as proxy.

² Uptake of two doses of meningococcal serogroup B (MenB) vaccine, scheduled at two and four months of age.

³ Children receiving the final dose of PCV.

⁴ Completed '4 in 1' preschool booster, the Hib/ MenC booster and second MMR dose by four years of age.

Figure 5. (a) Uptake of '6 in 1' vaccine in Welsh Local Authority areas in children reaching their 1st birthday between 01/04/22 and 31/03/23. **(b)** Uptake of at least 1 dose of MMR immunisation in Welsh Local Authority areas in children reaching their 2nd birthday between 01/04/22 and 31/03/23.

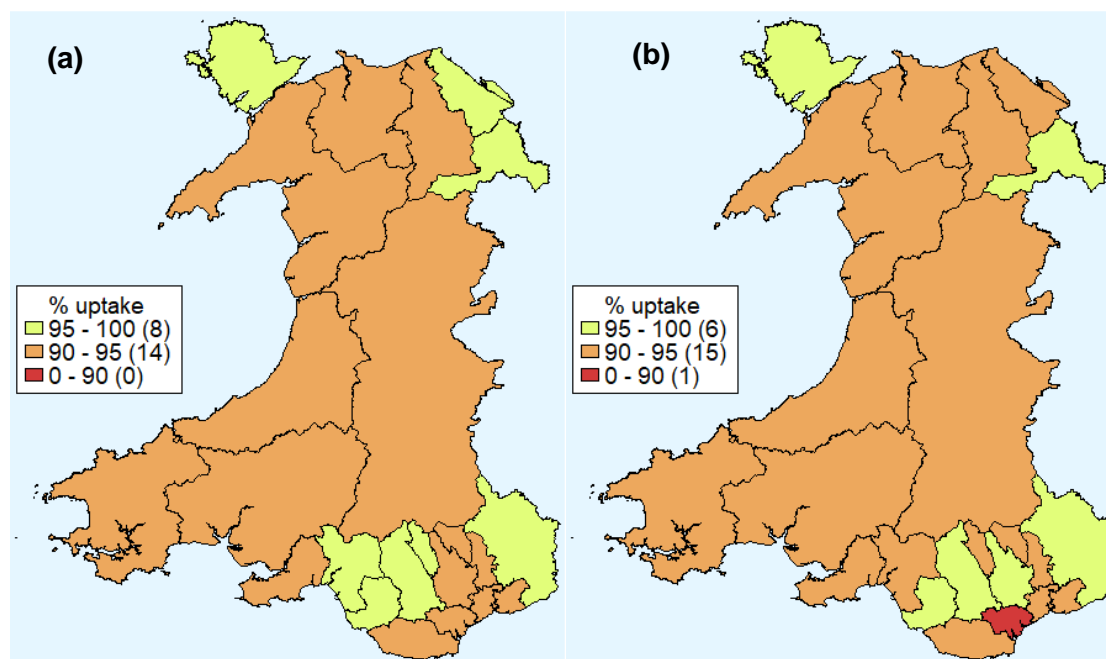


Figure 6. (a) Uptake of two doses of MMR vaccine in Welsh Local Authority areas in children reaching their 5th birthday between 01/04/22 and 31/03/23. **(b)** Uptake of '4 in 1' vaccine in Welsh Local Authority areas in children reaching their 5th birthday between 01/04/22 and 31/03/23.

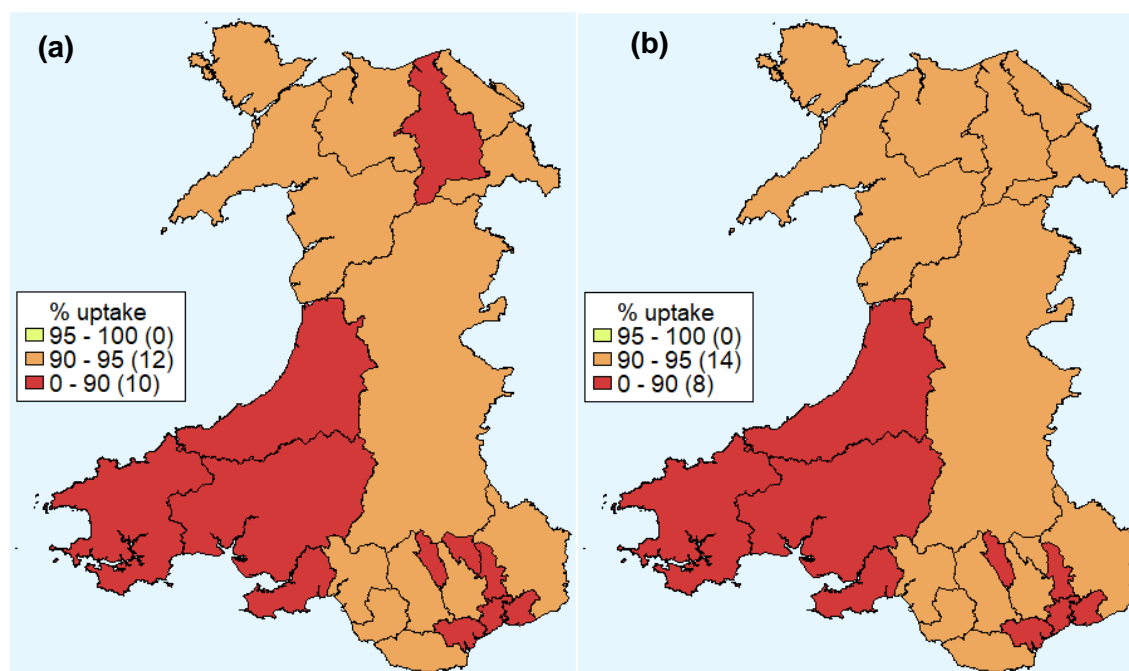


Figure 7. Annual uptake of '6 in 1' vaccine by 1 year of age (2019 – 2023 financial years, ranked by uptake in 2022/23).

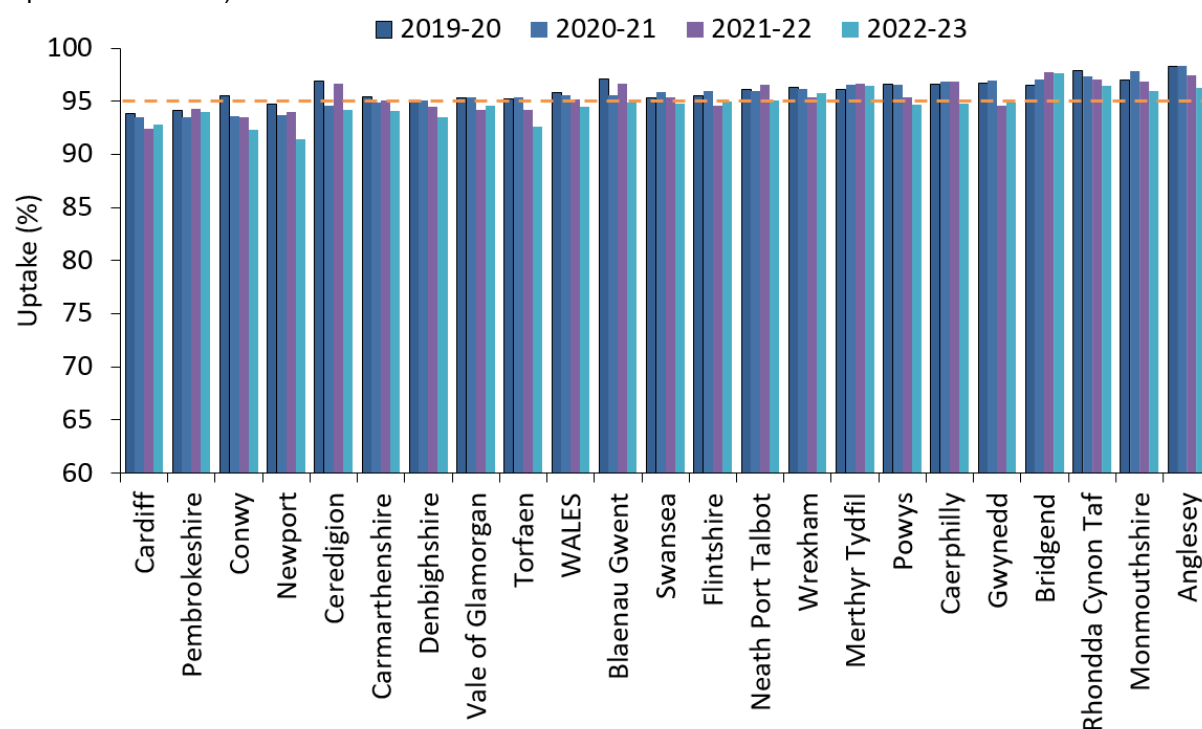


Figure 8. Annual uptake of 1 dose of MMR by 2 years of age (2019 – 2023 financial years, ranked by uptake in 2022/23).

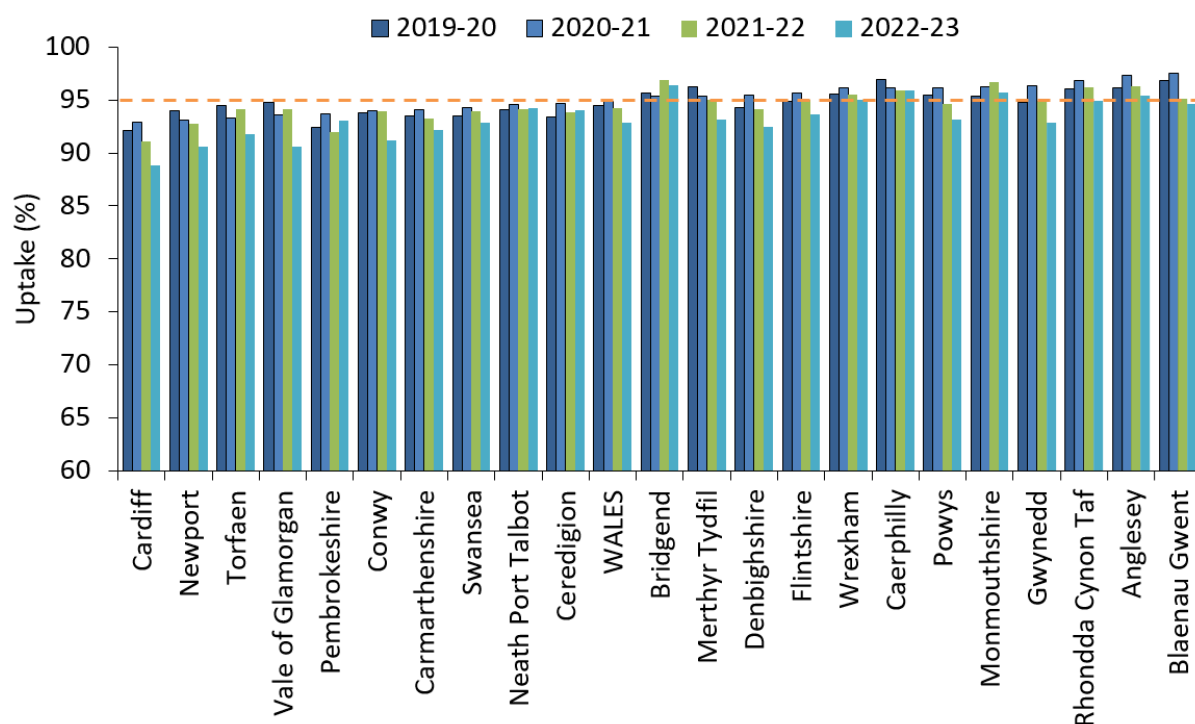


Figure 9. Annual uptake of 2 doses of MMR by 5 years of age (2019 – 2023 financial years, ranked by uptake in 2022/23).

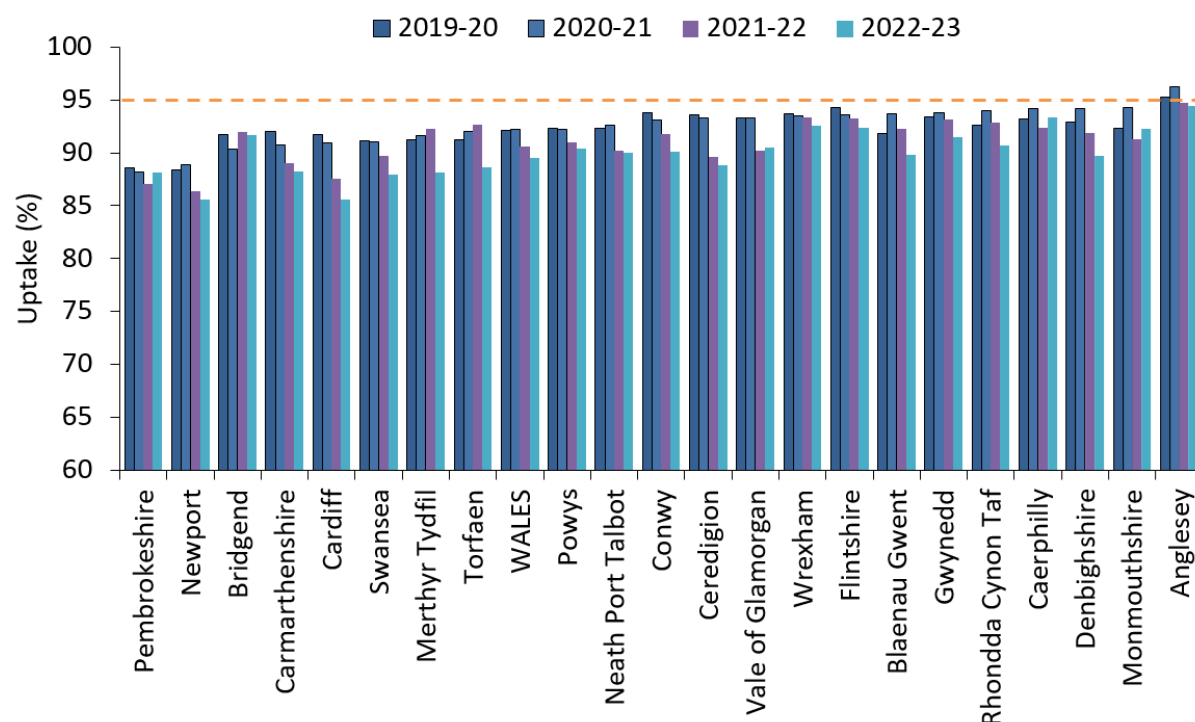


Figure 10. Annual uptake of the '4 in 1' pre-school booster by 5 years of age (2019 – 2023 financial years, ranked by uptake in 2022/23).

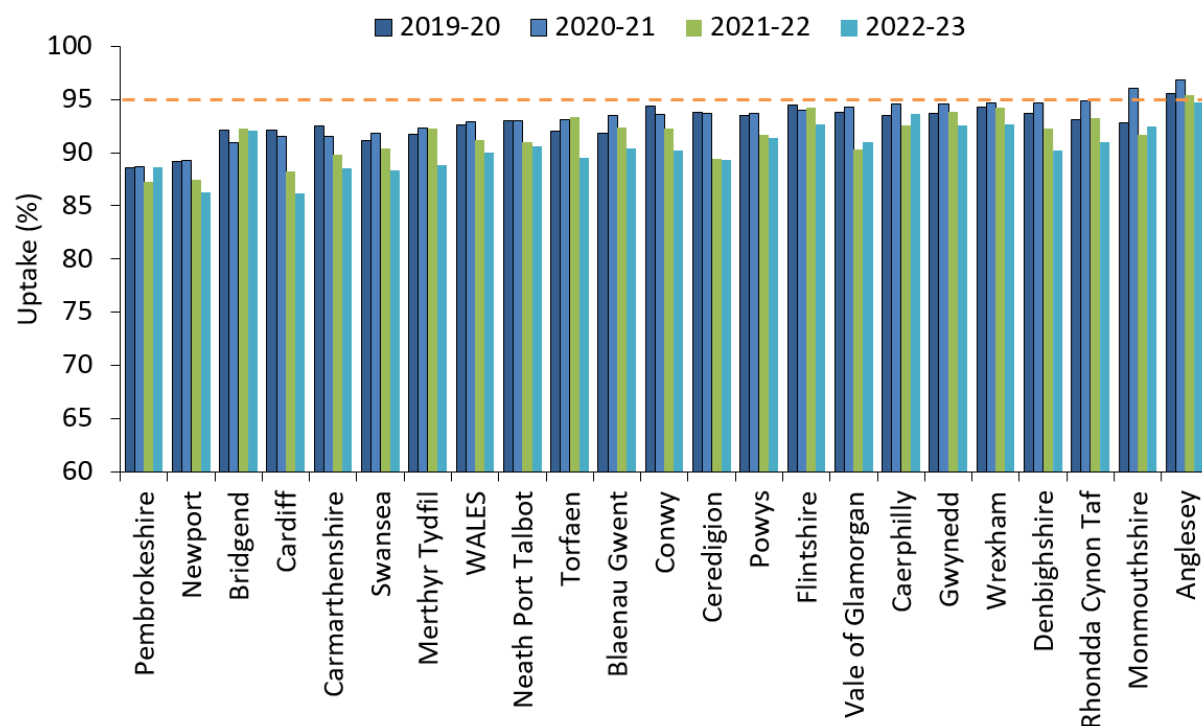
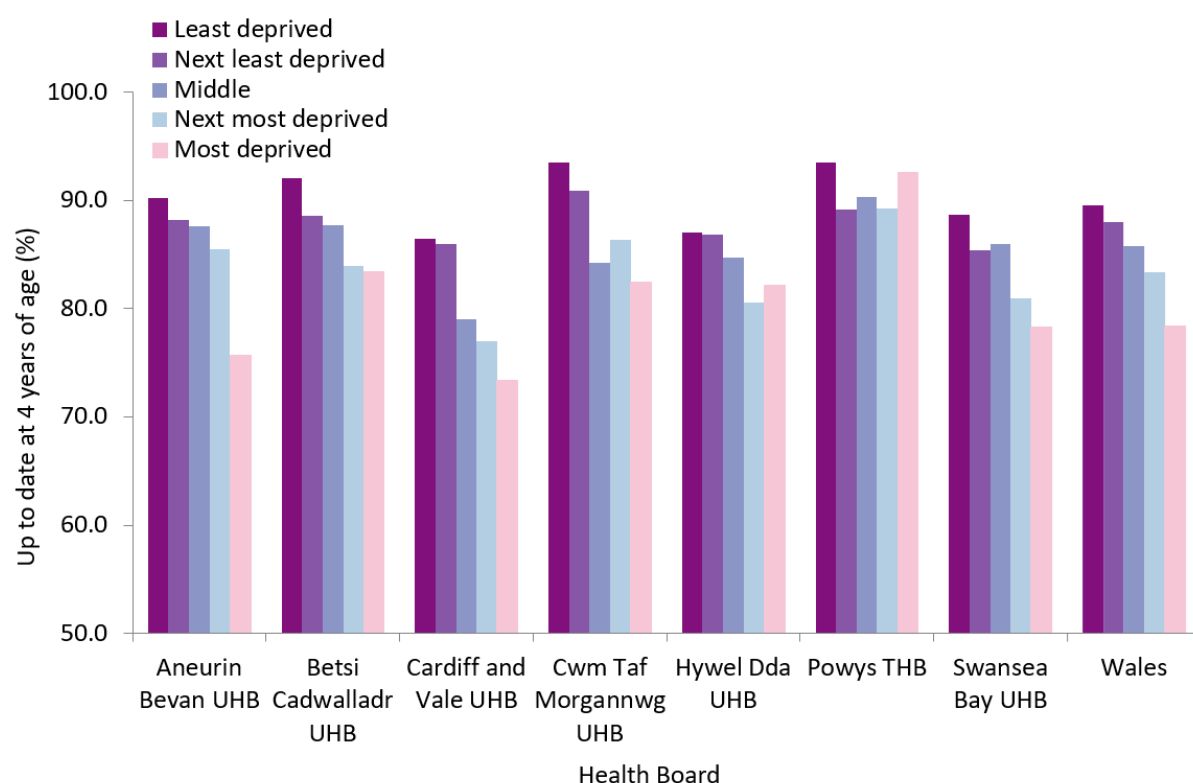
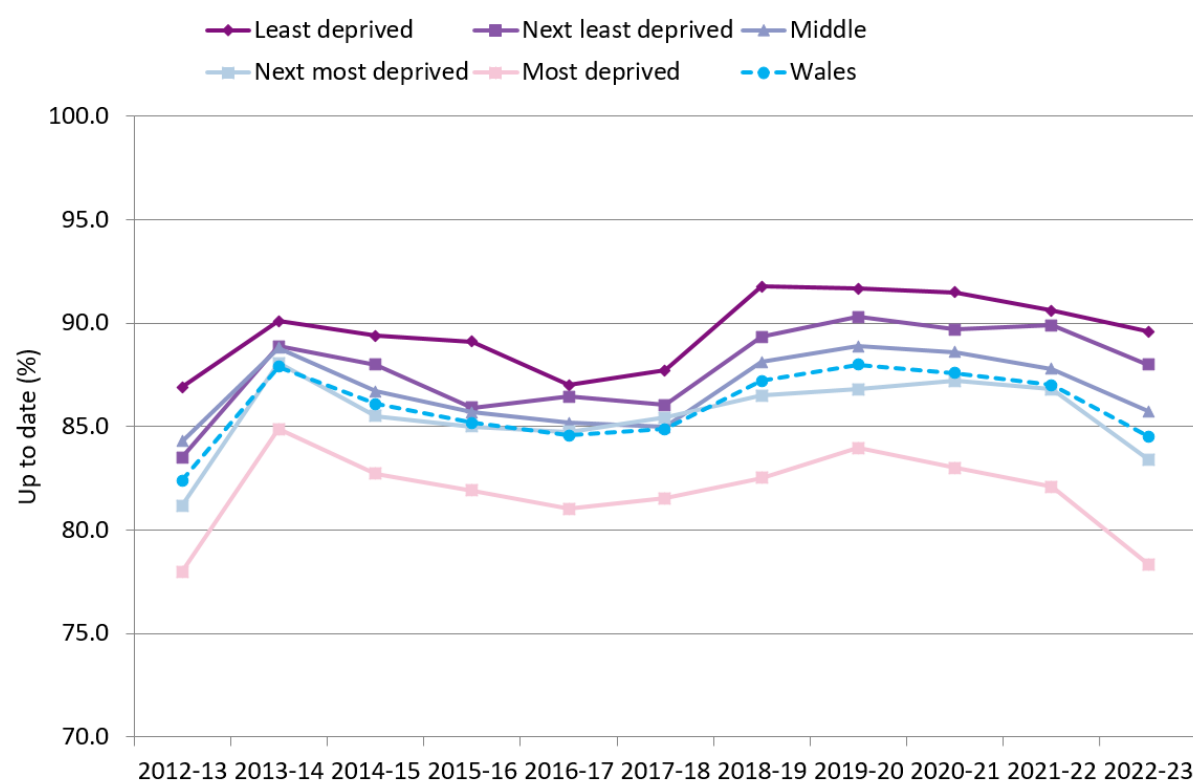


Figure 11. Percentage of children who are up to date with routine immunisations¹ by four years of age, by quintile of deprivation of the Lower Super Output Area in which they reside. Vaccine uptake is presented for children reaching their 4th birthday between 01/04/2022 and 31/03/2023 and resident on 31/03/2023.



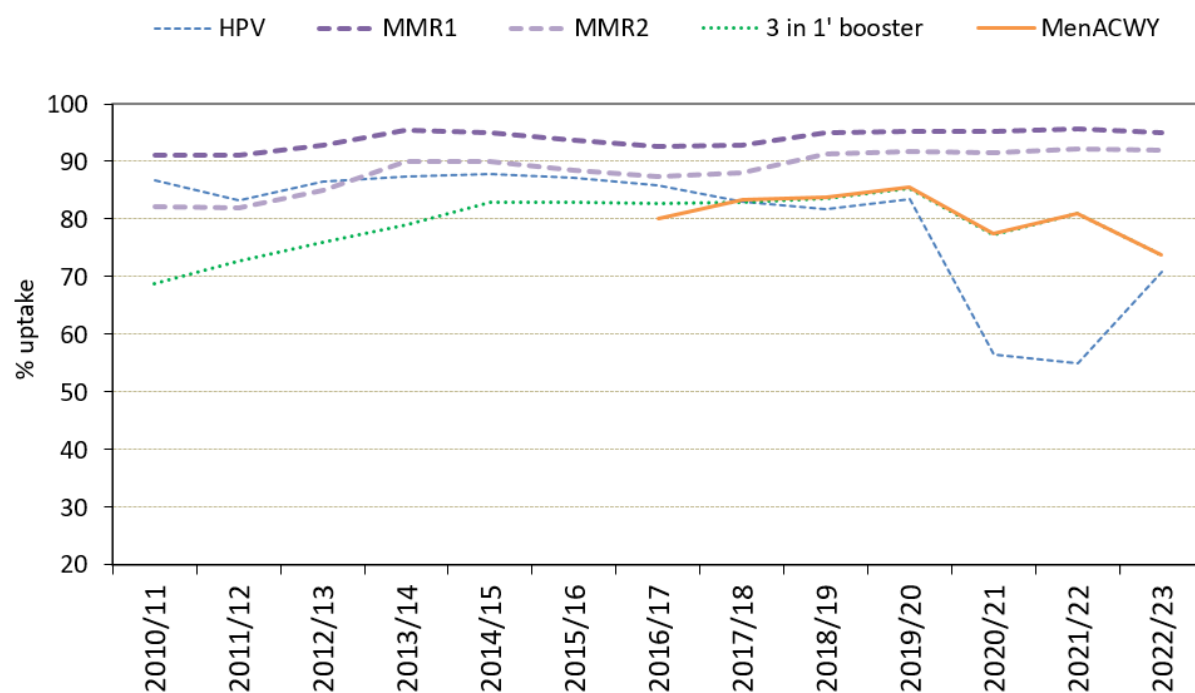
¹ Completed '4 in 1' pre-school booster, the Hib/MenC booster and second MMR dose by four years of age.

Figure 12. Percentage of children who are up to date with routine immunisations¹ by four years of age during 2012-2023 financial years, by quintile of deprivation of the Lower Super Output Area in which they reside.



¹ Completed '4 in 1' pre-school booster, the Hib/MenC booster and second MMR dose by four years of age.

Figure 13. Percentage uptake of the '3 in 1' Td/IPV teenage booster¹ vaccine in resident children and a complete course of HPV² vaccine, in School Year 10 academic years 2010/11 to 2022/23.³



¹Teenage booster dose of diphtheria, tetanus and polio (diphtheria used as proxy)

²A complete three-dose course of HPV vaccine in 2010/11 to 2015/16 school year 10 girls and a complete two-dose course in 2016/17 to 2020/21 school year 10 girls. From 2021/22 a complete two-dose course in school year 10 girls and boys is presented.

³Data in resident children as at 31st March of the academic year reported on.

Table 3. Vaccine uptake in children reaching their 1st birthday between 01/04/2022 and 31/03/2023 and resident on 31/03/2023.

Area	Resident children	D3	T3	P3	Po3	Hib3	HepB	MMR1	Rotavirus	PCV	HibMenCb	MenB ¹	
	(n)	(n)	(%)	(n)	(%)	(n)	(%)	(n)	(%)	(n)	(%)	(n)	(%)
<u>Aneurin Bevan University HB</u>													
Blaenau Gwent LA	719	682	94.9	682	94.9	682	94.9	682	94.9	682	94.9	1	0.1
Caerphilly LA	1694	1606	94.8	1606	94.8	1606	94.8	1606	94.8	1606	94.8	0	0.0
Monmouthshire LA	751	721	96.0	721	96	721	96.0	721	96.0	721	96.0	1	0.1
Newport LA	1976	1807	91.4	1807	91.4	1807	91.4	1807	91.4	1802	91.2	15	0.8
Torfaen LA	949	879	92.6	879	92.6	879	92.6	879	92.6	879	92.6	1	0.1
Health Board Total	6089	5695	93.5	5695	93.5	5695	93.5	5695	93.5	5690	93.4	18	0.3
<u>Betsi Cadwaladr University HB</u>													
Anglesey LA	591	569	96.3	569	96.3	569	96.3	569	96.3	569	96.3	0	0.0
Conwy LA	963	889	92.3	889	92.3	889	92.3	889	92.3	889	92.3	1	0.1
Denbighshire LA	968	905	93.5	905	93.5	905	93.5	905	93.5	904	93.4	7	0.7
Flintshire LA	1445	1373	95.0	1373	95	1373	95.0	1372	94.9	1372	94.9	7	0.5
Gwynedd LA	1053	999	94.9	999	94.9	999	94.9	999	94.9	1000	95.0	7	0.7
Wrexham LA	1259	1206	95.8	1206	95.8	1206	95.8	1206	95.8	1208	95.9	4	0.3
Health Board Total	6279	5941	94.6	5941	94.6	5941	94.6	5940	94.6	5940	94.6	26	0.4
<u>Cardiff and Vale University HB</u>													
Cardiff LA	3864	3585	92.8	3585	92.8	3585	92.8	3585	92.8	3587	92.8	33	0.9
Vale of Glamorgan LA	1262	1194	94.6	1194	94.6	1194	94.6	1194	94.6	1193	94.5	7	0.6
Health Board Total	5126	4779	93.2	4779	93.2	4779	93.2	4779	93.2	4780	93.3	40	0.8
<u>Cwm Taf Morgannwg University HB</u>													
Bridgend LA	1405	1372	97.7	1372	97.7	1372	97.7	1372	97.7	1372	97.7	1	0.1
Merthyr Tydfil LA	618	596	96.4	596	96.4	596	96.4	596	96.4	598	96.8	0	0.0
Rhondda Cynon Taf LA	2315	2233	96.5	2233	96.5	2233	96.5	2233	96.5	2232	96.4	5	0.2
Health Board Total	4338	4201	96.8	4201	96.8	4201	96.8	4201	96.8	4202	96.9	6	0.1
<u>Hywel Dda University HB</u>													
Cardiff LA	1595	1501	94.1	1501	94.1	1501	94.1	1501	94.1	1501	94.1	7	0.4
Ceredigion LA	534	503	94.2	503	94.2	503	94.2	503	94.2	503	94.2	2	0.4
Pembrokeshire LA	1055	992	94.0	992	94	992	94.0	992	94.0	990	93.8	1	0.1
Health Board Total	3184	2996	94.1	2996	94.1	2996	94.1	2996	94.1	2994	94.0	10	0.3
<u>Powys Teaching HB</u>													
Health Board Total	1077	1020	94.7	1020	94.7	1020	94.7	1020	94.7	1020	94.7	7	0.6
<u>Swansea Bay University HB</u>													
Neath Port Talbot LA	1305	1241	95.1	1241	95.1	1241	95.1	1241	95.1	1241	95.1	4	0.3
Swansea LA	2190	2077	94.8	2077	94.8	2077	94.8	2077	94.8	2081	95.0	11	0.5
Health Board Total	3495	3318	94.9	3318	94.9	3318	94.9	3318	94.9	3322	95.1	15	0.4
Unknown	13	13	100.0	13	100	13	100.0	13	100.0	13	100.0	13	80.0
Wales Total	29601	27963	94.5	27963	94.5	27963	94.5	27962	94.5	27962	94.5	122	0.4

¹Uptake of two doses of meningococcal serogroup B (MenB) vaccine, scheduled at two and four months of age.

Table 4. Vaccine uptake in children reaching their 2nd birthday between 01/04/2022 and 31/03/2023 and resident on 31/03/2023.

Area	Resident children	D3	T3	P3	Po3	Hib3	MMR1	MenB ¹	PCV2 ²	PCVf ³	HibMenCb
	(n)	(n) (%)	(n) (%)	(n) (%)	(n) (%)	(n) (%)	(n) (%)	(n) (%)	(n) (%)	(n) (%)	(n) (%)
<u>Aneurin Bevan University HB</u>											
Blaenau Gwent LA	666	644 96.7	644 96.7	644 96.7	644 96.7	644 96.7	630 94.6	630 94.6	647 97.1	629 94.4	623 93.5
Caerphilly LA	1605	1556 96.9	1556 96.9	1556 96.9	1556 96.9	1556 96.9	1540 96.0	1527 95.1	1561 97.3	1529 95.3	1532 95.5
Monmouthshire LA	814	791 97.2	790 97.1	791 97.2	791 97.2	789 96.9	779 95.7	771 94.7	788 96.8	773 95.0	771 94.7
Newport LA	1891	1768 93.5	1768 93.5	1768 93.5	1768 93.5	1768 93.5	1713 90.6	1687 89.2	1769 93.5	1701 90.0	1687 89.2
Torfaen LA	941	884 93.9	884 93.9	884 93.9	883 93.8	883 93.8	864 91.8	860 91.4	892 94.8	861 91.5	859 91.3
Health Board Total	5917	5643 95.4	5642 95.4	5643 95.4	5642 95.4	5640 95.3	5526 93.4	5475 92.5	5657 95.6	5493 92.8	5472 92.5
<u>Betsi Cadwaladr University HB</u>											
Anglesey LA	593	578 97.5	578 97.5	578 97.5	578 97.5	578 97.5	566 95.4	565 95.3	580 97.8	568 95.8	565 95.3
Conwy LA	950	895 94.2	895 94.2	895 94.2	895 94.2	895 94.2	866 91.2	867 91.3	905 95.3	869 91.5	867 91.3
Denbighshire LA	943	898 95.2	898 95.2	898 95.2	898 95.2	898 95.2	872 92.5	860 91.2	896 95.0	866 91.8	867 91.9
Flintshire LA	1454	1390 95.6	1390 95.6	1390 95.6	1390 95.6	1390 95.6	1362 93.7	1356 93.3	1407 96.8	1360 93.5	1360 93.5
Gwynedd LA	1018	967 95.0	967 95.0	967 95.0	967 95.0	966 94.9	945 92.8	932 91.6	964 94.7	938 92.1	938 92.1
Wrexham LA	1257	1215 96.7	1215 96.7	1215 96.7	1215 96.7	1215 96.7	1195 95.1	1188 94.5	1218 96.9	1194 95.0	1188 94.5
Health Board Total	6215	5943 95.6	5943 95.6	5943 95.6	5943 95.6	5942 95.6	5806 93.4	5768 92.8	5970 96.1	5795 93.2	5785 93.1
<u>Cardiff and Vale University HB</u>											
Cardiff LA	3652	3402 93.2	3402 93.2	3402 93.2	3402 93.2	3400 93.1	3245 88.9	3145 86.1	3389 92.8	3195 87.5	3199 87.6
Vale of Glamorgan LA	1265	1192 94.2	1192 94.2	1192 94.2	1191 94.2	1189 94.0	1146 90.6	1133 89.6	1192 94.2	1135 89.7	1139 90.0
Health Board Total	4917	4594 93.4	4594 93.4	4594 93.4	4593 93.4	4589 93.3	4391 89.3	4278 87.0	4581 93.2	4330 88.1	4338 88.2
<u>Cwm Taf Morgannwg University HB</u>											
Bridgend LA	1354	1327 98.0	1327 98.0	1327 98.0	1325 97.9	1326 97.9	1305 96.4	1304 96.3	1328 98.1	1308 96.6	1303 96.2
Merthyr Tydfil LA	613	591 96.4	591 96.4	591 96.4	590 96.2	591 96.4	571 93.1	570 93.0	590 96.2	573 93.5	568 92.7
Rhondda Cynon Taf LA	2362	2286 96.8	2286 96.8	2286 96.8	2286 96.8	2286 96.8	2243 95.0	2223 94.1	2288 96.9	2241 94.9	2231 94.5
Health Board Total	4329	4204 97.1	4204 97.1	4204 97.1	4201 97.0	4203 97.1	4119 95.1	4097 94.6	4206 97.2	4122 95.2	4102 94.8
<u>Hywel Dda University HB</u>											
Cardiganshire LA	1718	1638 95.3	1638 95.3	1638 95.3	1638 95.3	1637 95.3	1584 92.2	1574 91.6	1643 95.6	1578 91.9	1574 91.6
Ceredigion LA	538	515 95.7	515 95.7	515 95.7	514 95.5	512 95.2	506 94.1	498 92.6	511 95.0	505 93.9	502 93.3
Pembrokeshire LA	1025	979 95.5	979 95.5	979 95.5	979 95.5	979 95.5	954 93.1	947 92.4	979 95.5	950 92.7	948 92.5
Health Board Total	3281	3132 95.5	3132 95.5	3132 95.5	3131 95.4	3128 95.3	3044 92.8	3019 92.0	3133 95.5	3033 92.4	3024 92.2
<u>Powys Teaching HB</u>											
Health Board Total	1063	1013 95.3	1013 95.3	1013 95.3	1013 95.3	1013 95.3	990 93.1	985 92.7	1016 95.6	993 93.4	987 92.9
<u>Swansea Bay University HB</u>											
Neath Port Talbot LA	1303	1260 96.7	1260 96.7	1260 96.7	1260 96.7	1260 96.7	1228 94.2	1223 93.9	1267 97.2	1221 93.7	1217 93.4
Swansea LA	2117	2019 95.4	2019 95.4	2018 95.3	2019 95.4	2017 95.3	1966 92.9	1926 91.0	2002 94.6	1949 92.1	1931 91.2
Health Board Total	3420	3279 95.9	3279 95.9	3278 95.8	3279 95.9	3277 95.8	3194 93.4	3149 92.1	3269 95.6	3170 92.7	3148 92.0
Unknown	18	17 94.4	17 94.4	17 94.4	17 94.4	17 94.4	17 94.4	15 83.3	16 88.9	15 83.3	15 83.3
Wales Total	29160	27825 95.4	27824 95.4	27824 95.4	27819 95.4	27809 95.4	27087 92.9	26786 91.9	27848 95.5	26951 92.4	26871 92.2

¹Uptake of three doses of MenB vaccine scheduled at 2, 4 and 12-13 months of age.

² Full primary 2-dose course of pneumococcal conjugate vaccine

³ Final (booster) dose of pneumococcal conjugate vaccine

Table 5. Vaccine uptake in children reaching their 4th birthday between 01/04/2022 and 31/03/2023 and resident on 31/03/2023.

Area	Resident Children	4 in 1 Preschool booster ¹		HibMenCb		MMR dose 2		Up to date in schedule ²	
	(n)	(n)	(%)	(n)	(%)	(n)	(%)	(n)	(%)
<u>Aneurin Bevan University HB</u>									
Blaenau Gwent LA	718	626	87.2	685	95.4	623	86.8	618	86.1
Caerphilly LA	1894	1658	87.5	1811	95.6	1650	87.1	1638	86.5
Monmouthshire LA	845	767	90.8	804	95.1	764	90.4	753	89.1
Newport LA	2027	1650	81.4	1826	90.1	1647	81.3	1604	79.1
Torfaen LA	1009	832	82.5	940	93.2	824	81.7	819	81.2
Health Board Total	6493	5533	85.2	6066	93.4	5508	84.8	5432	83.7
<u>Betsi Cadwaladr University HB</u>									
Anglesey LA	637	589	92.5	624	98.0	588	92.3	586	92.0
Conwy LA	1044	877	84.0	994	95.2	879	84.2	872	83.5
Denbighshire LA	987	841	85.2	940	95.2	838	84.9	834	84.5
Flintshire LA	1527	1336	87.5	1455	95.3	1332	87.2	1326	86.8
Gwynedd LA	1098	991	90.3	1049	95.5	984	89.6	978	89.1
Wrexham LA	1382	1252	90.6	1319	95.4	1246	90.2	1230	89.0
Health Board Total	6675	5886	88.2	6381	95.6	5867	87.9	5826	87.3
<u>Cardiff and Vale University HB</u>									
Cardiff LA	4006	3268	81.6	3608	90.1	3255	81.3	3178	79.3
Vale of Glamorgan LA	1473	1257	85.3	1376	93.4	1245	84.5	1235	83.8
Health Board Total	5479	4525	82.6	4984	91.0	4500	82.1	4413	80.5
<u>Cwm Taf Morgannwg University HB</u>									
Bridgend LA	1544	1385	89.7	1470	95.2	1387	89.8	1369	88.7
Merthyr Tydfil LA	697	577	82.8	648	93.0	575	82.5	570	81.8
Rhondda Cynon Taf LA	2608	2285	87.6	2509	96.2	2283	87.5	2261	86.7
Health Board Total	4849	4247	87.6	4627	95.4	4245	87.5	4200	86.6
<u>Hywel Dda University HB</u>									
Cardemarthenshire LA	1867	1549	83.0	1763	94.4	1555	83.3	1538	82.4
Ceredigion LA	586	523	89.2	549	93.7	521	88.9	518	88.4
Pembrokeshire LA	1145	984	85.9	1072	93.6	979	85.5	972	84.9
Health Board Total	3598	3056	84.9	3384	94.1	3055	84.9	3028	84.2
<u>Powys Teaching HB</u>									
Health Board Total	1211	1102	91.0	1160	95.8	1103	91.1	1093	90.3
<u>Swansea Bay University HB</u>									
Neath Port Talbot LA	1431	1218	85.1	1361	95.1	1217	85.0	1206	84.3
Swansea LA	2460	2065	83.9	2262	92.0	2066	84.0	2017	82.0
Health Board Total	3891	3283	84.4	3623	93.1	3283	84.4	3223	82.8
Unknown	9	8	88.9	8	88.9	8	88.9	8	88.9
Wales Total	32205	27640	85.8	30233	93.9	27569	85.6	27223	84.5

¹ Uptake of acellular pertussis used as proxy

² Completed '4 in 1' preschool booster, the Hib/MenC booster and second MMR dose by four years of age.

Table 6. Percentages of children who are up to date with routine immunisations¹ by four years of age, by quintile of deprivation of the Lower Super Output Area in which they reside. Vaccine uptake is presented for children reaching their 4th birthday between 01/04/2022 and 31/03/2023 and resident on 31/03/2023.

Health Board	Least deprived			Next least deprived			Middle			Next most deprived			Most deprived		
	Resident children	Up to date by 4y		Resident children	Up to date by 4y		Resident children	Up to date by 4y		Resident children	Up to date by 4y		Resident children	Up to date by 4y	
	(n)	(n)	(%)	(n)	(n)	(%)	(n)	(n)	(%)	(n)	(n)	(%)	(n)	(n)	(%)
Aneurin Bevan	834	752	90.2	964	850	88.2	1287	1127	87.6	1280	1094	85.5	2125	1609	75.7
Betsi Cadwalladr University	1225	1128	92.1	1555	1377	88.6	1506	1321	87.7	1314	1103	83.9	1073	895	83.4
Cardiff and Vale University	1872	1619	86.5	665	572	86.0	723	571	79.0	635	489	77.0	1583	1162	73.4
Cwm Taf Morgannwg	696	651	93.5	651	592	90.9	627	528	84.2	1502	1297	86.4	1372	1131	82.4
Hywel Dda	154	134	87.0	1018	884	86.8	1161	984	84.8	839	676	80.6	420	345	82.1
Powys Teaching	168	157	93.5	496	442	89.1	350	316	90.3	130	116	89.2	67	62	92.5
Swansea Bay University	810	718	88.6	452	386	85.4	499	429	86.0	833	674	80.9	1297	1016	78.3
Wales Total	5759	5159	89.6	5801	5103	88.0	6153	5276	85.7	6533	5449	83.4	7937	6220	78.4

¹Completed '4 in 1' preschool booster, the Hib/MenC booster and second MMR dose by four years of age.

Table 7. Vaccine uptake in children reaching their 5th birthday between 01/04/2022 and 31/03/2023 and resident on 31/03/2023.

Area	Resident children	D3		T3		P3		Po3		Hib3		PCVf ¹		HibMenCb		MMR1		MMR2		D4		T4		aP		Po4	
	(n)	(n)	(%)	(n)	(%)	(n)	(%)	(n)	(%)	(n)	(%)	(n)	(%)	(n)	(%)	(n)	(%)	(n)	(%)	(n)	(%)	(n)	(%)	(n)	(%)	(n)	(%)
<u>Aneurin Bevan University HB</u>																											
Blaenau Gwent LA	763	739	96.9	739	96.9	739	96.9	739	96.9	739	96.9	724	94.9	723	94.8	737	96.6	685	89.8	690	90.4	690	90.4	690	90.4	690	90.4
Caerphilly LA	2018	1969	97.6	1969	97.6	1969	97.6	1968	97.5	1968	97.5	1943	96.3	1950	96.6	1964	97.3	1884	93.4	1889	93.6	1889	93.6	1889	93.6	1889	93.6
Monmouthshire LA	880	837	95.1	837	95.1	837	95.1	837	95.1	837	95.1	825	93.8	827	94.0	847	96.3	812	92.3	814	92.5	814	92.5	814	92.5	814	92.5
Newport LA	2135	1976	92.6	1976	92.6	1976	92.6	1977	92.6	1971	92.3	1929	90.4	1920	89.9	1978	92.6	1828	85.6	1841	86.2	1841	86.2	1841	86.2	1842	86.3
Torfaen LA	1051	1017	96.8	1017	96.8	1017	96.8	1017	96.8	1017	96.8	999	95.1	1002	95.3	1006	95.7	931	88.6	941	89.5	941	89.5	941	89.5	941	89.5
Health Board Total	6847	6538	95.5	6538	95.5	6538	95.5	6538	95.5	6532	95.4	6420	93.8	6422	93.8	6532	95.4	6140	89.7	6175	90.2	6175	90.2	6175	90.2	6176	90.2
<u>Betsi Cadwaladr University HB</u>																											
Anglesey LA	705	686	97.3	686	97.3	686	97.3	685	97.2	685	97.2	676	95.9	683	96.9	686	97.3	666	94.5	668	94.8	668	94.8	668	94.8	668	94.8
Conwy LA	1076	1028	95.5	1028	95.5	1028	95.5	1028	95.5	1025	95.3	1005	93.4	1013	94.1	1029	95.6	970	90.1	971	90.2	971	90.2	971	90.2	971	90.2
Denbighshire LA	1024	969	94.6	969	94.6	969	94.6	967	94.4	968	94.5	951	92.9	966	94.3	973	95.0	919	89.7	924	90.2	924	90.2	924	90.2	925	90.3
Flintshire LA	1695	1626	95.9	1626	95.9	1626	95.9	1626	95.9	1625	95.9	1599	94.3	1612	95.1	1628	96.0	1565	92.3	1571	92.7	1571	92.7	1571	92.7	1571	92.7
Gwynedd LA	1149	1097	95.5	1097	95.5	1097	95.5	1097	95.5	1098	95.6	1083	94.3	1090	94.9	1097	95.5	1051	91.5	1064	92.6	1064	92.6	1064	92.6	1064	92.6
Wrexham LA	1537	1474	95.9	1474	95.9	1474	95.9	1474	95.9	1472	95.8	1443	93.9	1458	94.9	1476	96.0	1422	92.5	1424	92.6	1424	92.6	1424	92.6	1423	92.6
Health Board Total	7186	6880	95.7	6880	95.7	6880	95.7	6877	95.7	6873	95.6	6757	94.0	6822	94.9	6889	95.9	6593	91.7	6622	92.2	6622	92.2	6622	92.2	6622	92.2
<u>Cardiff and Vale University HB</u>																											
Cardiff LA	4136	3851	93.1	3851	93.1	3850	93.1	3852	93.1	3847	93.0	3654	88.3	3772	91.2	3856	93.2	3539	85.6	3565	86.2	3565	86.2	3563	86.1	3564	86.2
Vale of Glamorgan LA	1522	1458	95.8	1458	95.8	1458	95.8	1458	95.8	1460	95.9	1423	93.5	1436	94.3	1459	95.9	1377	90.5	1385	91.0	1385	91.0	1385	91.0	1385	91.0
Health Board Total	5658	5309	93.8	5309	93.8	5308	93.8	5310	93.8	5307	93.8	5077	89.7	5208	92.0	5315	93.9	4916	86.9	4950	87.5	4950	87.5	4948	87.5	4949	87.5
<u>Cwm Taf Morgannwg University HB</u>																											
Bridgend LA	1557	1514	97.2	1514	97.2	1514	97.2	1514	97.2	1513	97.2	1475	94.7	1479	95.0	1502	96.5	1427	91.7	1434	92.1	1434	92.1	1434	92.1	1435	92.2
Merthyr Tydfil LA	736	709	96.3	709	96.3	709	96.3	709	96.3	708	96.2	693	94.2	687	93.3	704	95.7	649	88.2	654	88.9	654	88.9	654	88.9	654	88.9
Rhondda Cynon Taf LA	2655	2579	97.1	2579	97.1	2579	97.1	2578	97.1	2577	97.1	2520	94.9	2519	94.9	2567	96.7	2409	90.7	2416	91.0	2416	91.0	2416	91.0	2416	91.0
Health Board Total	4948	4802	97.0	4802	97.0	4802	97.0	4801	97.0	4798	97.0	4688	94.7	4685	94.7	4773	96.5	4485	90.6	4504	91.0	4504	91.0	4504	91.0	4505	91.0
<u>Hywel Dda University HB</u>																											
Carmarthenshire LA	1946	1857	95.4	1857	95.4	1857	95.4	1855	95.3	1854	95.3	1806	92.8	1829	94.0	1845	94.8	1717	88.2	1723	88.5	1723	88.5	1723	88.5	1722	88.5
Ceredigion LA	606	571	94.2	571	94.2	571	94.2	570	94.1	571	94.2	562	92.7	563	92.9	569	93.9	538	88.8	541	89.3	541	89.3	541	89.3	541	89.3
Pembrokeshire LA	1227	1163	94.8	1163	94.8	1163	94.8	1162	94.7	1162	94.7	1121	91.4	1141	93.0	1160	94.5	1081	88.1	1087	88.6	1087	88.6	1087	88.6	1084	88.3
Health Board Total	3779	3591	95.0	3591	95.0	3591	95.0	3587	94.9	3587	94.9	3489	92.3	3533	93.5	3574	94.6	3336	88.3	3351	88.7	3351	88.7	3351	88.7	3347	88.6
<u>Powys Teaching HB</u>																											
Health Board Total	1237	1180	95.4	1180	95.4	1180	95.4	1180	95.4	1180	95.4	1150	93.0	1159	93.7	1185	95.8	1118	90.4	1130	91.4	1131	91.4	1130	91.4	1130	91.4
<u>Swansea Bay University HB</u>																											
Neath Port Talbot LA	1545	1505	97.4	1505	97.4	1505	97.4	1502	97.2	1505	97.4	1464	94.8	1478	95.7	1488	96.3	1390	90.0	1400	90.6	1400	90.6	1400	90.6	1400	90.6
Swansea LA	2589	2422	93.5	2422	93.5	2422	93.5	2424	93.6	2420	93.5	2327	89.9	2376	91.8	2417	93.4	2278	88.0	2286	88.3	2286	88.3	2286	88.3	2286	88.3
Health Board Total	4134	3927	95.0	3927	95.0	3927	95.0	3926	95.0	3925	94.9	3791	91.7	3854	93.2	3905	94.5	3668	88.7	3686	89.2	3686	89.2	3686	89.2	3686	89.2
Unknown	6	5	83.3	5	83.3	5	83.3	5	83.3	5	83.3	4	66.7	5	83.3	5	83.3	4	66.7	4	66.7	4	66.7	4	66.7	4	66.7
Wales Total	33795	32232	95.4	32232	95.4	32231	95.4	32224	95.4	32207	95.3	31376	92.8	31688	93.8	32178	95.2	30260	89.5	30422	90.0	30423	90.0	30420	90.0	30419	90.0

¹ Final (booster) dose of pneumococcal conjugate vaccine

Table 8. HPV Vaccine uptake in children reaching their 14th, 15th and 16th birthdays between 01/09/2022 and 31/08/2023 and resident on 31/03/2023 (School Year 9, 10 and 11 during 2022/23). Uptake for those reaching 16 years of age is for girls only.

Area	14 years (2022-23 School Year 9)			15 years (2022-23 School Year 10)				16 years (2022-23 School Year 11)			
	Resident Children	HPV 1 dose		Resident Children	HPV 1 dose		HPV 2 doses	Resident girls	HPV 1 dose		HPV 2 doses
		(n)	(%)		(n)	(%)	(n)		(n)	(%)	(n)
<u>Aneurin Bevan University HB</u>											
Blaenau Gwent LA	816	519	63.6	857	696	81.2	598	386	261	67.6	191
Caerphilly LA	2209	1410	63.8	2280	1910	83.8	1569	1064	882	82.9	721
Monmouthshire LA	1106	762	68.9	1122	874	77.9	667	552	431	78.1	377
Newport LA	2168	1267	58.4	2261	1643	72.7	1208	995	750	75.4	588
Torfaen LA	1170	784	67.0	1152	945	82.0	764	544	438	80.5	362
Health Board Total	7469	4742	63.5	7672	6068	79.1	4806	3541	2762	78.0	2239
<u>Betsi Cadwaladr University HB</u>											
Anglesey LA	817	622	76.1	814	665	81.7	597	370	312	84.3	301
Conwy LA	1224	774	63.2	1274	1007	79.0	743	609	513	84.2	441
Denbighshire LA	1164	613	52.7	1216	818	67.3	554	552	452	81.9	373
Flintshire LA	1791	1325	74.0	1851	1451	78.4	1282	903	779	86.3	720
Gwynedd LA	1334	966	72.4	1313	1117	85.1	1065	638	580	90.9	564
Wrexham LA	1638	1153	70.4	1684	1394	82.8	1201	733	639	87.2	602
Health Board Total	7968	5453	68.4	8152	6452	79.1	5442	3805	3275	86.1	3001
<u>Cardiff and Vale University HB</u>											
Cardiff LA	4557	2288	50.2	4538	3441	75.8	3079	2147	1777	82.8	1568
Vale of Glamorgan LA	1669	1048	62.8	1716	1373	80.0	1173	783	698	89.1	588
Health Board Total	6226	3336	53.6	6254	4814	77.0	4252	2930	2475	84.5	2156
<u>Cwm Taf Morgannwg University HB</u>											
Bridgend LA	1696	1365	80.5	1718	1551	90.3	1396	859	773	90.0	749
Merthyr Tydfil LA	744	495	66.5	779	671	86.1	557	330	275	83.3	263
Rhondda Cynon Taf LA	3017	2454	81.3	2960	2619	88.5	2288	1358	1206	88.8	1127
Health Board Total	5457	4314	79.1	5457	4841	88.7	4241	2547	2254	88.5	2139
<u>Hywel Dda University HB</u>											
Carmarthenshire LA	2158	1545	71.6	2324	1987	85.5	1755	1083	996	92.0	937
Ceredigion LA	603	494	81.9	658	550	83.6	529	333	297	89.2	288
Pembrokeshire LA	1372	924	67.3	1372	1084	79.0	994	681	572	84.0	515
Health Board Total	4133	2963	71.7	4354	3621	83.2	3278	2097	1865	88.9	1740
<u>Powys Teaching HB</u>											
Health Board Total	1355	990	73.1	1508	1230	81.6	1138	672	591	87.9	538
<u>Swansea Bay University HB</u>											
Neath Port Talbot LA	1693	1461	86.3	1677	1516	90.4	1369	809	752	93.0	711
Swansea LA	2745	2343	85.4	2922	2620	89.7	2367	1347	1262	93.7	1218
Health Board Total	4438	3804	85.7	4599	4136	89.9	3736	2156	2014	93.4	1929
Unknown	33	14	42.4	41	28	68.3	23	15	9	60.0	7
Wales Total	37079	25616	69.1	38037	31190	82.0	26916	17763	15245	85.8	13749

Table 9. Vaccine uptake in children reaching their 15th birthday between 01/09/2022 and 31/08/2023 and resident on 31/03/2023 (with breakdown of MMR1 and MMR2 coverage by sex).

Area	Resident children		Teenage 3 in 1							Resident girls		MMR1 (girls)		MMR2 (girls)		HPV 2 doses		Resident boys		MMR1 (boys)		MMR2 (boys)	
		MMR1	MMR2	booster ¹		MenACWY																	
Aneurin Bevan University HB	(n)	(n)	(%)	(n)	(%)	(n)	(%)	(n)	(%)	(n)	(n)	(%)	(n)	(%)	(n)	(%)	(n)	(n)	(n)	(%)	(n)	(%)	
Blaenau Gwent LA	857	824	96.1	798	93.1	604	70.5	596	69.5	416	395	95.0	378	90.9	598	69.8	441	429	97.3	420	95.2		
Caerphilly LA	2280	2223	97.5	2172	95.3	1482	65.0	1486	65.2	1087	1063	97.8	1040	95.7	1569	68.8	1193	1160	97.2	1132	94.9		
Monmouthshire LA	1122	1020	90.9	992	88.4	765	68.2	772	68.8	547	498	91.0	482	88.1	667	59.4	575	522	90.8	510	88.7		
Newport LA	2261	2105	93.1	2015	89.1	1320	58.4	1321	58.4	1092	1023	93.7	985	90.2	1208	53.4	1168	1081	92.6	1030	88.2		
Torfaen LA	1152	1107	96.1	1078	93.6	730	63.4	766	66.5	550	535	97.3	521	94.7	764	66.3	602	572	95.0	557	92.5		
Health Board Total	7672	7279	94.9	7055	92.0	4901	63.9	4941	64.4	3692	3514	95.2	3406	92.3	4806	62.6	3979	3764	94.6	3649	91.7		
Betsi Cadwaladr University HB																							
Anglesey LA	814	779	95.7	760	93.4	586	72.0	567	69.7	414	398	96.1	388	93.7	597	73.3	400	381	95.3	372	93.0		
Conwy LA	1274	1215	95.4	1192	93.6	912	71.6	919	72.1	635	608	95.7	598	94.2	743	58.3	638	607	95.1	594	93.1		
Denbighshire LA	1216	1139	93.7	1119	92.0	792	65.1	797	65.5	574	535	93.2	530	92.3	554	45.6	641	604	94.2	589	91.9		
Flintshire LA	1851	1720	92.9	1685	91.0	1354	73.1	1362	73.6	901	828	91.9	809	89.8	1282	69.3	950	892	93.9	876	92.2		
Gwynedd LA	1313	1267	96.5	1230	93.7	1034	78.8	1016	77.4	634	613	96.7	591	93.2	1065	81.1	679	654	96.3	639	94.1		
Wrexham LA	1684	1595	94.7	1569	93.2	1249	74.2	1256	74.6	818	783	95.7	774	94.6	1201	71.3	865	811	93.8	794	91.8		
Health Board Total	8152	7715	94.6	7555	92.7	5927	72.7	5917	72.6	3976	3765	94.7	3690	92.8	5442	66.8	4173	3949	94.6	3864	92.6		
Cardiff and Vale University HB																							
Cardiff LA	4538	4275	94.2	4059	89.4	3196	70.4	3207	70.7	2241	2123	94.7	2014	89.9	3079	67.8	2297	2152	93.7	2045	89.0		
Vale of Glamorgan LA	1716	1663	96.9	1609	93.8	1329	77.4	1331	77.6	831	807	97.1	781	94.0	1173	68.4	885	856	96.7	828	93.6		
Health Board Total	6254	5938	94.9	5668	90.6	4525	72.4	4538	72.6	3072	2930	95.4	2795	91.0	4252	68.0	3182	3008	94.5	2873	90.3		
Cwm Taf Morgannwg University HB																							
Bridgend LA	1718	1669	97.1	1613	93.9	1446	84.2	1446	84.2	828	807	97.5	787	95.0	1396	81.3	890	862	96.9	826	92.8		
Merthyr Tydfil LA	779	750	96.3	729	93.6	593	76.1	590	75.7	379	365	96.3	351	92.6	557	71.5	400	385	96.3	378	94.5		
Rhondda Cynon Taf LA	2960	2866	96.8	2803	94.7	2344	79.2	2345	79.2	1456	1411	96.9	1381	94.8	2288	77.3	1501	1452	96.7	1421	94.7		
Health Board Total	5457	5285	96.8	5145	94.3	4383	80.3	4381	80.3	2663	2583	97.0	2519	94.6	4241	77.7	2791	2699	96.7	2625	94.1		
Hywel Dda University HB																							
Carmarthenshire LA	2324	2189	94.2	2119	91.2	1765	75.9	1757	75.6	1149	1081	94.1	1047	91.1	1755	75.5	1175	1108	94.3	1072	91.2		
Ceredigion LA	658	609	92.6	593	90.1	557	84.7	554	84.2	319	295	92.5	287	90.0	529	80.4	339	314	92.6	306	90.3		
Pembrokeshire LA	1372	1275	92.9	1207	88.0	887	64.7	879	64.1	682	642	94.1	620	90.9	994	72.4	690	633	91.7	587	85.1		
Health Board Total	4354	4073	93.5	3919	90.0	3209	73.7	3190	73.3	2150	2018	93.9	1954	90.9	3278	75.3	2204	2055	93.2	1965	89.2		
Powys Teaching HB																							
Health Board Total	1508	1420	94.2	1367	90.6	1186	78.6	1191	79.0	706	666	94.3	646	91.5	1138	75.5	802	754	94.0	721	89.9		
Swansea Bay University HB																							
Neath Port Talbot LA	1677	1632	97.3	1583	94.4	1404	83.7	1405	83.8	785	763	97.2	745	94.9	1369	81.6	892	869	97.4	838	93.9		
Swansea LA	2922	2757	94.4	2682	91.8	2496	85.4	2510	85.9	1457	1373	94.2	1345	92.3	2367	81.0	1465	1384	94.5	1337	91.3		
Health Board Total	4599	4389	95.4	4265	92.7	3900	84.8	3915	85.1	2242	2136	95.3	2090	93.2	3736	81.2	2357	2253	95.6	2175	92.3		
Unknown	41	37	90.2	37	90.2	24	58.5	25	61.0	22	20	90.9	20	90.9	23	56.1	19	17	89.5	17	89.5		
Wales Total	38037	36136	95.0	35011	92.0	28055	73.8	28098	73.9	18523	17632	95.2	17120	92.4	26916	70.8	19507	18499	94.8	17889	91.7		

¹ Teenage booster dose of diphtheria, tetanus and polio (diphtheria used as proxy)

Table 10. Vaccine uptake in children reaching their 16th birthday between 01/09/2022 and 31/08/2023 and resident on 31/03/2023 (with breakdown of MMR1 and MMR2 coverage by sex).

Area	Resident children		Teenage 3 in 1								Resident girls	MMR1		MMR2		HPV 2 doses		Resident boys	MMR1		MMR2	
			MMR1	MMR2	booster ¹				MenACWY			(girls)	(girls)	(girls)	(girls)	HPV 2 doses	(boys)		(boys)	(boys)	(boys)	
<u>Aneurin Bevan University HB</u>	(n)	(n)	(%)	(n)	(%)	(n)	(%)	(n)	(%)	(n)	(n)	(%)	(n)	(%)	(n)	(%)	(n)	(n)	(%)	(n)	(%)	
Blaenau Gwent LA	726	700	96.4	679	93.5	564	77.7	564	77.7	386	370	95.9	358	92.7	191	49.5	340	330	97.1	321	94.4	
Caerphilly LA	2113	2051	97.1	1997	94.5	1719	81.4	1725	81.6	1064	1039	97.7	1013	95.2	721	67.8	1049	1012	96.5	984	93.8	
Monmouthshire LA	1123	1030	91.7	997	88.8	862	76.8	868	77.3	552	506	91.7	493	89.3	377	68.3	571	524	91.8	504	88.3	
Newport LA	2068	1935	93.6	1853	89.6	1535	74.2	1524	73.7	995	936	94.1	900	90.5	588	59.1	1072	999	93.2	953	88.9	
Torfaen LA	1135	1116	98.3	1082	95.3	904	79.6	910	80.2	544	537	98.7	522	96.0	362	66.5	591	579	98.0	560	94.8	
Health Board Total	7165	6832	95.4	6608	92.2	5584	77.9	5591	78.0	3541	3388	95.7	3286	92.8	2239	63.2	3623	3444	95.1	3322	91.7	
<u>Betsi Cadwaladr University HB</u>																						
Anglesey LA	788	757	96.1	734	93.1	630	79.9	628	79.7	370	359	97.0	348	94.1	301	81.4	418	398	95.2	386	92.3	
Conwy LA	1236	1167	94.4	1139	92.2	975	78.9	982	79.4	609	578	94.9	573	94.1	441	72.4	626	589	94.1	566	90.4	
Denbighshire LA	1157	1073	92.7	1051	90.8	887	76.7	894	77.3	552	515	93.3	501	90.8	373	67.6	604	558	92.4	550	91.1	
Flintshire LA	1833	1734	94.6	1687	92.0	1555	84.8	1558	85.0	903	845	93.6	827	91.6	720	79.7	930	889	95.6	860	92.5	
Gwynedd LA	1304	1261	96.7	1231	94.4	1135	87.0	1130	86.7	638	619	97.0	608	95.3	564	88.4	665	642	96.5	623	93.7	
Wrexham LA	1563	1508	96.5	1472	94.2	1271	81.3	1270	81.3	733	714	97.4	696	95.0	602	82.1	830	794	95.7	776	93.5	
Health Board Total	7881	7500	95.2	7314	92.8	6453	81.9	6462	82.0	3805	3630	95.4	3553	93.4	3001	78.9	4073	3870	95.0	3761	92.3	
<u>Cardiff and Vale University HB</u>																						
Cardiff LA	4360	4071	93.4	3866	88.7	3216	73.8	3217	73.8	2147	2011	93.7	1904	88.7	1568	73.0	2212	2059	93.1	1961	88.7	
Vale of Glamorgan LA	1644	1569	95.4	1504	91.5	1305	79.4	1303	79.3	783	751	95.9	723	92.3	588	75.1	861	818	95.0	781	90.7	
Health Board Total	6004	5640	93.9	5370	89.4	4521	75.3	4520	75.3	2930	2762	94.3	2627	89.7	2156	73.6	3073	2877	93.6	2742	89.2	
<u>Cwm Taf Morgannwg University HB</u>																						
Bridgend LA	1769	1705	96.4	1627	92.0	1559	88.1	1568	88.6	859	831	96.7	797	92.8	749	87.2	910	874	96.0	830	91.2	
Merthyr Tydfil LA	721	690	95.7	667	92.5	606	84.0	603	83.6	330	316	95.8	302	91.5	263	79.7	391	374	95.7	365	93.4	
Rhondda Cynon Taf LA	2878	2790	96.9	2725	94.7	2514	87.4	2512	87.3	1358	1315	96.8	1287	94.8	1127	83.0	1520	1475	97.0	1438	94.6	
Health Board Total	5368	5185	96.6	5019	93.5	4679	87.2	4683	87.2	2547	2462	96.7	2386	93.7	2139	84.0	2821	2723	96.5	2633	93.3	
<u>Hywel Dda University HB</u>																						
Carmarthenshire LA	2196	2053	93.5	1972	89.8	1888	86.0	1884	85.8	1083	1016	93.8	976	90.1	937	86.5	1113	1037	93.2	996	89.5	
Ceredigion LA	679	638	94.0	619	91.2	600	88.4	599	88.2	333	314	94.3	303	91.0	288	86.5	346	324	93.6	316	91.3	
Pembrokeshire LA	1370	1269	92.6	1189	86.8	1129	82.4	1125	82.1	681	642	94.3	605	88.8	515	75.6	689	627	91.0	584	84.8	
Health Board Total	4245	3960	93.3	3780	89.0	3617	85.2	3608	85.0	2097	1972	94.0	1884	89.8	1740	83.0	2148	1988	92.6	1896	88.3	
<u>Powys Teaching HB</u>																						
Health Board Total	1384	1296	93.6	1245	90.0	1199	86.6	1215	87.8	672	629	93.6	606	90.2	538	80.1	711	667	93.8	639	89.9	
<u>Swansea Bay University HB</u>																						
Neath Port Talbot LA	1645	1601	97.3	1546	94.0	1460	88.8	1464	89.0	809	791	97.8	765	94.6	711	87.9	836	810	96.9	781	93.4	
Swansea LA	2784	2618	94.0	2527	90.8	2504	89.9	2506	90.0	1347	1280	95.0	1232	91.5	1218	90.4	1437	1338	93.1	1295	90.1	
Health Board Total	4429	4219	95.3	4073	92.0	3964	89.5	3970	89.6	2156	2071	96.1	1997	92.6	1929	89.5	2273	2148	94.5	2076	91.3	
Unknown	32	29	90.6	28	87.5	21	65.6	21	65.6	15	14	93.3	13	86.7	7	46.7	17	15	88.2	15	88.2	
Wales Total	36508	34661	94.9	33437	91.6	30038	82.3	30070	82.4	17763	16928	95.3	16352	92.1	13749	77.4	18739	17732	94.6	17084	91.2	

¹ Teenage booster dose of diphtheria, tetanus and polio (diphtheria used as proxy).

Table 11. Uptake of hepatitis B immunisation in children born to hepatitis B positive mothers reaching their 1st, 2nd and 5th birthdays during 01/04/2022 and 31/03/2023 and resident on 31/03/2023.¹

Area	1yr					2yrs						5yrs					
	Resident children	Babies at risk of perinatal infection	1 dose	2 doses	3 doses	Resident children	Babies at risk of perinatal infection	1 dose	2 doses	3 doses	4 doses	Resident children	Babies at risk of perinatal infection	1 dose	2 dose	3 doses	4 doses
	(n)	(n)	(%)	(%)	(%)	(n)	(n)	(%)	(%)	(%)	(%)	(n)	(n)	(%)	(%)	(%)	(%)
Aneurin Bevan	6089	4	100.0	100.0	100.0	5917	6	100.0	100.0	100.0	100.0	6847	6	100.0	100.0	100.0	83.3
Betsi Cadwalladr University	6279	3	100.0	100.0	100.0	6215	3	100.0	100.0	100.0	100.0	7186	9	100.0	100.0	100.0	100.0
Cardiff and Vale University	5126	7	100.0	100.0	100.0	4917	14	100.0	100.0	100.0	50.0	5658	22	100.0	95.5	95.5	72.7
Cwm Taf Morgannwg	4338	0	0.0	0.0	0.0	4329	3	100.0	100.0	100.0	100.0	4948	7	100.0	100.0	100.0	100.0
Hywel Dda	3184	2	100.0	100.0	100.0	3281	1	100.0	100.0	100.0	100.0	3779	1	100.0	100.0	100.0	100.0
Powys Teaching	1077	0	0.0	0.0	0.0	1063	0	0.0	0.0	0.0	0.0	1237	0	0.0	0.0	0.0	0.0
Swansea Bay University	3495	6	100.0	100.0	100.0	3420	3	100.0	100.0	100.0	100.0	4134	4	100.0	100.0	100.0	100.0
Unknown	13	0	0.0	0.0	0.0	18	0	0.0	0.0	0.0	0.0	6	0	0.0	0.0	0.0	0.0
Wales	29601	22	100.0	100.0	100.0	29160	30	100.0	100.0	100.0	76.7	33795	49	100.0	98.0	98.0	85.7

¹Data reflects immunisations given and recorded on the Public Health Wales All Wales Neonatal Hepatitis B database of babies born to hepatitis B positive mothers.

Links

Public Health Wales Vaccination and Immunisation intranet (NHS Wales only):
https://nhswales365.sharepoint.com/sites/PHW_VPDPComms

Public Health Wales internet:
<https://phw.nhs.wales/>

Report Team

Report prepared by Public Health Wales Vaccine Preventable Disease Programme (VPDP) and Communicable Disease Surveillance Centre (CDSC), in collaboration with Digital Health and Care Wales (DHCW).

Comment and queries relating to this report should be addressed to Public Health Wales VPDP:
Email: surveillance.requests@wales.nhs.uk

Acknowledgments

Immunisation data for this report is provided by Health Board Child Health Administration Offices, via the Children and Young Persons Integrated System (CYPrIS). The authors would like to thank Child Health Office Administration Managers and Immunisation Coordinators for their continuing advice and support in the COVER scheme.

Suggested citation

Public Health Wales Vaccine Preventable Disease Programme. Vaccine uptake in children in Wales; COVER Annual report 2022, June 2023. Cardiff: Public Health Wales.