

Vaccine Uptake in Children in Wales

COVER Annual Report 2024

Data for the year ending 31st March 2024



Key points

- In 2023/24 uptake of the '6 in 1' (DTaP/IPV/Hib/HepB) and pneumococcal conjugate vaccinations in one year old children in Wales was 94.2% and 96.0% respectively.
- MenB vaccine uptake was 93.5% for two doses, and uptake of two doses of rotavirus vaccine was 91.8% at one year.
- MMR uptake was 92.9% for the first dose at two years.
- MenB uptake was 92.0% for the complete course at two years,
- By their fourth birthday, 84.3% of children were up to date with recommended immunisations.
- MMR dose two uptake in children at five years of age was 88.9%, and uptake of the pre-school '4 in 1' (DTaP/IPV) booster in this age-group was 89.1%.
- School-based vaccination sessions for teenagers are continuing for the 2023/24 academic year. From September 2023 the HPV vaccination programme changed from a two dose to a one-dose-only schedule. Human Papillomavirus (HPV) vaccine uptake in children turning 14 years of age during the 2023/24 school year (School Year 9) was 67.7% for the first dose. Uptake of the complete one-dose course in children turning 15 years of age (School Year 10) was 74.1%.
- MMR uptake, for a full two dose course, was 91.8% and 91.6% for teenagers turning 15 and 16 years of age respectively during the 2023/24 school year.
- MenACWY vaccine uptake in teenagers turning 15 and 16 years of age during the 2023/24 school year was 69.3% and 75.8%.

Background

Surveillance of uptake and equality of routine childhood vaccinations in Wales is carried out by Public Health Wales Vaccine Preventable Disease Programme through the national COVER scheme in Wales (Coverage of Vaccination Evaluation Rapidly). The annual COVER report summarises this surveillance from April 2023 to March 2024.

Methods

These annual results for 2023/24 are for one-year cohorts of children living in Wales as at 31st March 2024. Uptake is reported on those reaching their first, second, fourth and fifth birthdays between 1st April 2023 and 31st March 2024. Uptake of vaccinations in those reaching 15 and 16 years of age are presented by school year.

Data for this report was provided by NHS Wales Informatics Service from Children and Young Persons Integrated System (CYPrIS). The data was sourced from Community Child Health databases maintained by local Child Health Office staff in Trusts throughout Wales based on regular returns from doctors and nurses who immunise or advise on immunisation. Uptake data presented throughout are for LHB resident population, not for LHB GP practice populations.

Inequalities in uptake of routine vaccinations at four years of age are also presented. National quintiles of deprivation were calculated according to the Lower Super Output Area (LSOA) rankings contained in the Welsh Index of Multiple Deprivation (WIMD 2019). Deprivation rankings contained in the WIMD are relative, not absolute values, and they refer to an overall composite measure of factors related to deprivation for all residents in the LSOA as a whole, not the circumstances of individual residents within the LSOA.

Childhood Vaccinations in Wales Annual Report 2024

1 year



2 years



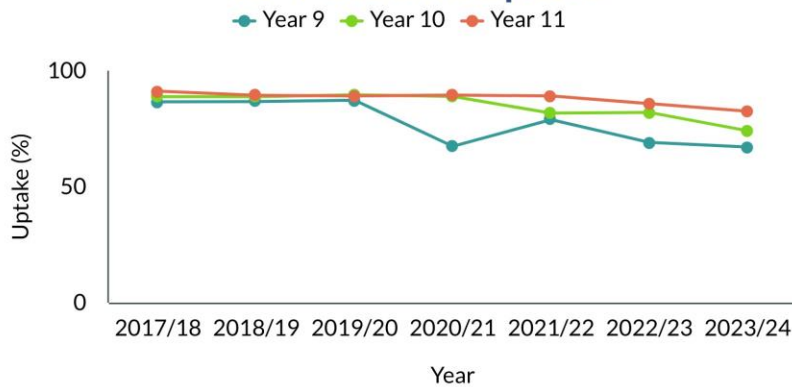
Figures presented are for 3 doses of 6in1; 2 doses of MenB; 1 dose of Rotavirus; 1 dose of PCV at one year of age. For two year olds, it is 1 dose of MMR, 2nd dose of PCV and the HibMenC booster.

Up to date with vaccinations at:



Children who are up to date with their Hib/MenC booster, '4 in 1' DTaP/IPV pre-school booster and MMR vaccines.

HPV Vaccine Uptake



From September 2023 the HPV vaccination programme changed from a two dose to a one-dose-only schedule. From 2017/18 to 2020/21 a complete one-dose course in girls is presented. From 2021/22 a complete one-dose course in girls and boys is presented. Uptake data are as at end of March for each academic year presented, final uptake figures are likely to be higher for each cohort as vaccination offers continue throughout the academic year.

16 years



GIG CYMRU NHS WALES
Iechyd Cyhoeddus Cymru
Public Health Wales

Findings

1. '6 in 1' DTaP/IPV/Hib/HepB¹ vaccine uptake (all three doses) in children reaching their first birthday decreased slightly to 94.2%, compared to 94.5% in the previous year. Uptake ranged by health board (HB) from 92.9% (Aneurin Bevan) to 96.2% (Cwm Taf Morgannwg) and by local authority (LA) from 91.2% (Newport) to 96.5% (Anglesey, Bridgend). Eight of the 22 LAs achieved the 95% target (Figures 1, 2, 5, 7 and Tables 2, 3).
2. Uptake of pneumococcal conjugate vaccination (PCV) in children reaching their first birthday was 96.0%, ranging by HB from 94.6% (Powys Teaching) to 97.5% (Cwm Taf Morgannwg) and by LA from 93.9% (Newport) to 98.0% (Merthyr Tydfil) (Figures 1, 2 and Tables 2, 3). This is the third full annual cohort of children to be on the new one dose primary PCV course [1].
3. Rotavirus vaccine uptake of two doses in children reaching their first birthday increased slightly to 91.8%, compared to the previous year at 91.7%. Uptake ranged by HB from 89.6% (Aneurin Bevan) to 94.5% (Cwm Taf Morgannwg) and by LA from 87.6% (Newport) to 95.6% (Bridgend) (Figures 1, 2 and Tables 2, 3).
4. Meningococcal serotype B vaccination (MenB) uptake of two doses in children at one year of age was 93.5%, ranging by HB from 91.4% (Cardiff and Vale) to 95.9% (Cwm Taf Morgannwg) and by LA from 89.9% (Newport) to 96.8% (Anglesey) (Table 3).
5. MMR uptake of one dose by two years of age remained at 92.9%. Uptake ranged by HB from 91.0% (Cardiff and Vale) to 95.5% (Cwm Taf Morgannwg) and by LA from 89.3% (Newport) to 96.0% (Anglesey). One HB achieved the target uptake of 95%, and 4 out of 22 LAs exceeded the 95% target (Figures 1, 5, 8 and Tables 2, 4).
6. Pneumococcal Conjugate Vaccine (PCVf) uptake of the final dose by two years of age was 92.6%. Uptake by HB ranged from 90.2% (Cardiff and Vale) to 95.8% (Cwm Taf Morgannwg) and by LA from 88.7% (Newport) to 96.3% (Anglesey, Bridgend) (Figure 2 and Tables 2, 4).
7. Hib/MenC booster uptake by two years of age was 92.3%, ranging by HB from 90.0% (Cardiff and Vale) to 95.5% (Cwm Taf Morgannwg) and by LA from 88.1% (Newport) to 96.1% (Bridgend) (Figures 1, 2 and Tables 2, 4).
8. MenB vaccine uptake of a complete course in children at two years of age was 92.0%, ranging by HB from 89.1% (Cardiff and Vale) to 95.5% (Cwm Taf Morgannwg), and by LA from 88.3% (Cardiff) to 96.1% (Bridgend).
9. Hib/MenC booster coverage in children by their fourth birthday was 93.1% and ranged by HB from 90.6% (Cardiff and Vale) to 95.0% (Powys) (Table 5).
10. '4 in 1' DTaP/IPV 'pre-school booster' uptake in children by four years of age was 85.9%, this ranged by HB from 82.7% (Cardiff and Vale) to 90.9% (Powys) (Table 5).
11. MMR vaccine uptake of a complete two dose course in children by four years of age was 85.9%, this ranged by HB from 82.6% (Cardiff and Vale) to 90.7% (Powys) (Table 5).
12. The percentage of children who were up to date with their Hib/MenC booster, '4 in 1' DTaP/IPV pre-school booster and MMR vaccines by four years of age was 84.3%. This ranged by HB from 80.4% (Cardiff and Vale) to 89.6% (Powys) and by LA from 78.8% (Newport) to 91.9% (Anglesey) (Figure 4 and Tables 1, 2, 5).
13. The percentage of children who were up to date with their routine vaccinations by four years of age varied according to the national quintile of deprivation of the LSOA in which they resided. Nationally, the percentage of children up to date with their routine

¹ DTaP/IPV/Hib/HepB vaccine protects against diphtheria, tetanus, pertussis (Whooping Cough), polio, Hib and Hepatitis B infection.

immunisations by four years of age ranged from 77.9% in the most deprived quintile of LSOAs to 89.6% in the least deprived quintile of LSOAs. The difference in uptake between the least deprived quintile and the most deprived quintile was 11.7 percentage points; this is a widening of the inequality gap compared to 2022/23 (11.2 percentage points) (Figures 11, 12 and Table 6).

- 14.** MMR uptake of two doses in children at five years of age was 88.9%, ranging by HB from 85.9% (Cardiff and Vale) to 92.8% (Powys Teaching). Coverage of one dose of MMR in children at five years of age was 94.9% and ranged by HB from 93.1% (Cardiff & Vale) to 96.4% (Cwm Taf Morgannwg, Powys Teaching) (Figures 1, 2, 6, 9 and Tables 2, 7).
- 15.** '4 in 1' DTaP/IPV 'pre-school booster' uptake in children reaching their fifth birthday this year was 89.1% (Figures 2, 6, 10 and Tables 2, 7).
- 16.** HPV vaccine uptake in the full 2023/24 School Year 9 group (reaching their 14th birthday between 01/09/23 and 31/08/24) was 67.7%. For girls only, uptake was 71.6%. Uptake ranged by HB from 60.5% (Aneurin Bevan) to 83.4% (Swansea Bay) and by LA from 49.0% (Denbighshire) to 84.6% (Neath Port Talbot) (Tables 8, 9).
- 17.** HPV vaccine uptake in the full 2023/24 School Year 10 group (reaching their 15th birthday between 01/09/23 and 31/08/24) was 74.1%. for girls only, uptake was 77.4%. Uptake ranged by HB from 59.9% (Cardiff and Vale) to 88.2% (Swansea Bay) and by LA from 56.6% (Cardiff) to 88.8% (Neath Port Talbot) (Table 8, 9).
- 18.** MMR coverage of two doses in teenagers turning 15 years of age between 01/09/23 and 31/08/24 was 91.8%, ranging by HB from 88.6% (Powys) to 94.0% (Cwm Taf Morgannwg) and by LA from 85.5% (Monmouthshire) to 95.5% (Neath Port Talbot). Coverage of one dose of MMR in 15 year olds was 94.8%, ranging by HB from 93.0% (Powys) to 96.7% (Cwm Taf Morgannwg). A breakdown by sex indicates that 91.8% of girls had received a full (two MMR doses) course of immunisation against rubella and coverage of one dose was 94.9% (Figure 13 and Table 9).
- 19.** Td/IPV 'teenage booster' uptake in teenagers reaching 15 years of age between 01/09/23 and 31/08/24 was 69.7%. Uptake ranged by HB from 62.2% (Aneurin Bevan) to 82.3% (Swansea Bay) and by LA from 55.5% (Denbighshire) to 85.6% (Ceredigion) (Figure 13 and Table 9).
- 20.** Coverage of MenACWY vaccine in the 2023/24 School Year 10 group is currently 69.3%. Coverage in the 2023/24 School Year 11 group is currently 75.8% (Figure 13, Table 9 and 10).
- 21.** MMR coverage of two doses in teenagers turning 16 years of age during the 2023/24 school year was 91.6%, ranging by HB from 89.7% (Cardiff and Vale) to 94.0% (Cwm Taf Morgannwg) and by LA from 87.5% (Pembrokeshire) to 95.0% (Caerphilly). Coverage of one dose of MMR in 16 year olds was 94.7%, ranging by HB from 93.7% (Hywel Dda, Powys) to 95.8% (Swansea Bay). A breakdown by sex indicates that 92.0% of girls had received a full (two MMR doses) course of immunisation against rubella and coverage of one dose was 95.0% (Table 10).
- 22.** Td/IPV 'teenage booster' uptake in teenagers reaching 16 years during the 2023/24 school year was 75.7%. Uptake ranged by HB from 65.4% (Aneurin Bevan) to 86.0% (Swansea Bay) and by LA from 59.8% (Newport) to 86.1% (Swansea) (Table 10).
- 23.** Uptake of hepatitis B immunisation in babies at risk of perinatal infection, extracted from the Public Health Wales All Wales Neonatal Hepatitis B immunisation database, is presented in Table 11. The database was developed to assist the Public Health Wales Health Protection Team in the monitoring and follow up of hepatitis B immunisation of babies born to hepatitis B positive mothers and to provide a source for statistics on uptake of hepatitis B immunisation in this group. Uptake of three doses in children who were at risk of perinatal infection and reached their first birthday in the year ending 31st March 2024 was 69.6%. Uptake of four doses in children who were at risk of perinatal infection and reached their second birthday in the year ending 31st March 2024 was 88.2%. Uptake of four doses in children who were at risk of perinatal infection and reached their fifth birthday in the year ending 31st March 2024 was 100%.

Comment

Uptake in younger children remains broadly positive, however there has been a slight decreasing trend over the previous few years [2].

For the annual cohort of one year olds, uptake of the '6 in 1' vaccine remained below 95% dropping from 94.5% to 94.2%, but uptake of the pneumococcal conjugate vaccine remained above 95%. Uptake continues to vary between health board areas.

Uptake of two doses of Men B vaccine at one year of age was below 95% at 93.5%; with uptake of a complete three-dose course in two year olds slightly lower (92.0%). Uptake of MMR1 at two years of age remains below 95% for the full year cohort with uptake in the most recent quarterly cohort (Jan to Mar 2024) 93.1% and uptake in the first quarterly cohort (Apr to Jun 2023) 93.2% [2].

The proportion of children who were up to date with their routine immunisations by four years of age decreased slightly this year to 84.3%, from 84.5%. Of all the immunisations that are included in this composite measure, uptake of the '4 in 1' preschool booster is now as low as the second dose of MMR (85.9%) with the Hib/MenC booster uptake higher (93.1%).

The reported inequality gap in immunisation coverage between four year olds residing in the most and least deprived areas increased slightly compared to 2022/23, at 11.7 percentage points from 11.2. Coverage of children up to date with their routine immunisations remained the same as in 2022/23 in the least deprived quintile but has decreased slightly across all other quintiles, the greatest decrease was seen in the most deprived quintile. Further work is needed to identify the root cause of these inequalities and identify interventions to reduce the gap.

Coverage of immunisations in teenagers is lower compared to previous years. Catch up sessions were undertaken following the disruption of school-based vaccination sessions during the 2020/21 academic year due to school closures. Uptake of the Td/IPV vaccine the 2023/24 school year 10 cohort was 69.7% and 75.7% in the school year 11 cohort. This is lower than was reported for the equivalent groups last year, at 73.8% in school year 10 and 82.3% in school year 11 [2]. A similar trend can also be seen in coverage of MenACWY.

The 2023/24 School Year 9 cohort was the fourth to include boys as part of the HPV vaccination programme, uptake of one dose in these children is currently 69.1% (72.8% for girls and 65.6% for boys). Following the one-dose-only schedule change, those vaccinated with one dose of HPV vaccine will be considered fully vaccinated against HPV [3]. Uptake data are as at end of March for each academic year presented, final uptake figures are likely to be higher for each cohort as vaccination catch-up offers continue throughout the academic year.

There has been a resurgence of measles in England, since 1st October 2023 there have been 2,039 laboratory confirmed cases as at 5th July 2024. The cases were originally driven by outbreaks in Birmingham and the West Midlands, however recent shift has seen more cases in London [4]. In Wales, there were 9 confirmed cases of measles in 2023, 8 of which were part of a measles outbreak in Cardiff [5]. In April 2024, an outbreak of measles was declared in Gwent, resulting in 17 confirmed cases in total [6]. Importation of measles cases, following travel from measles-affected areas, and subsequent spread in the community remains a risk in Wales. Measles cases in other countries are expected to continue to increase in the coming months [7].

The measles resurgence highlights the importance of checking vaccination status and facilitating catch-up at every opportunity, especially around school entry and alongside school vaccination sessions, if large outbreaks are to be averted. In February 2024, a Welsh Health Circular was released, stating the need for urgent action to vaccinate children against measles [8].

[1] Welsh Health Circular- Changes to the infant pneumococcal conjugate vaccine (PCV) immunisation schedule. Available from:

[changes-to-the-infant-pneumococcal-conjugate-vaccine-immunisation-schedule.pdf \(gov.wales\)](#)

[2] Public Health Wales Health Protection Division. Vaccine uptake in Children in Wales, COVER report. Cardiff, Public Health Wales. Available from:

<https://phw.nhs.wales/topics/immunisation-and-vaccines/cover-national-childhood-immunisation-uptake-data/>

[3] Welsh Health Circular- Changes to the HPV immunisation programme from the academic school year starting September 2023. Available from:

[changes-to-the-vaccine-for-the-hpv-immunisation-programme-whc2022023.pdf \(gov.wales\)](#)

[4] UK Health Security Agency. News: Latest measles statistics published (25 April 2024).

Available from: [Latest measles statistics published - GOV.UK \(www.gov.uk\)](#)

[5] Public Health Wales. News: Importance of vaccination stressed, as Cardiff measles outbreak ends (18 January 2024). Available from:

[Importance of vaccination stressed, as Cardiff measles outbreak ends - Public Health Wales \(nhs.wales\)](#)

[6] Public Health Wales. News: Parents reminded of MMR importance as Gwent measles cases rise to 17 (30th May 2024). Available from:

[Parents reminded of MMR importance as Gwent measles cases rise to 17 - Public Health Wales \(nhs.wales\)](#)

[7] European Centre for Disease Control. Communicable Disease Threats Report Week 15 2024. Available from:

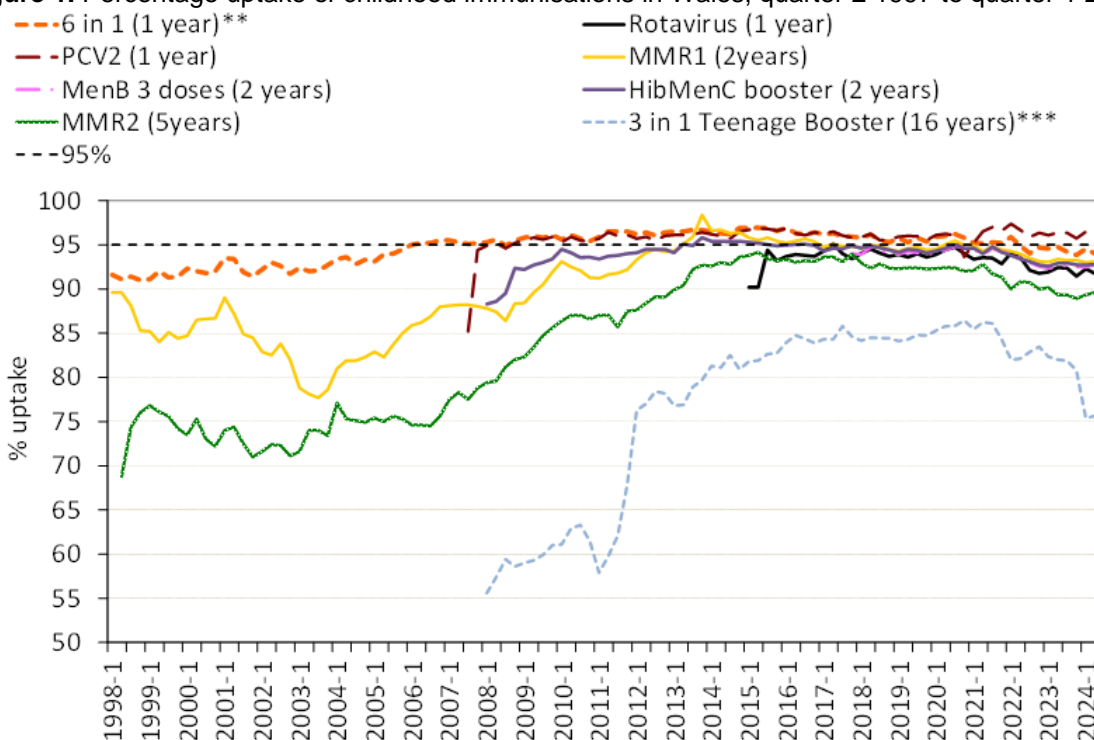
[Communicable disease threats report, 7 - 13 April 2024, week 15 \(europa.eu\)](#)

[8] Welsh Health Circular- Vaccination of children to protect against measles. Available from:

[Vaccination of children to protect against measles \(WHC/2024/008\) \[HTML\] | GOV.WALES](#)

Report prepared by Public Health Wales Vaccine Preventable Disease Programme and Communicable Disease Surveillance Centre. *Data for this report was provided by NHS Wales Informatics Service from Children and Young Persons Integrated System (CYPriS). The data was sourced from Community Child Health databases maintained by local Child Health Office staff in Trusts throughout Wales based on regular returns from doctors and nurses who immunise or advise on immunisation. Uptake data presented throughout are for LHB resident population, not for LHB GP practice populations. The maps, graphs and Table 2 are best viewed in colour*

Figure 1. Percentage uptake of childhood immunisations in Wales, quarter 2 1997 to quarter 1 2024.

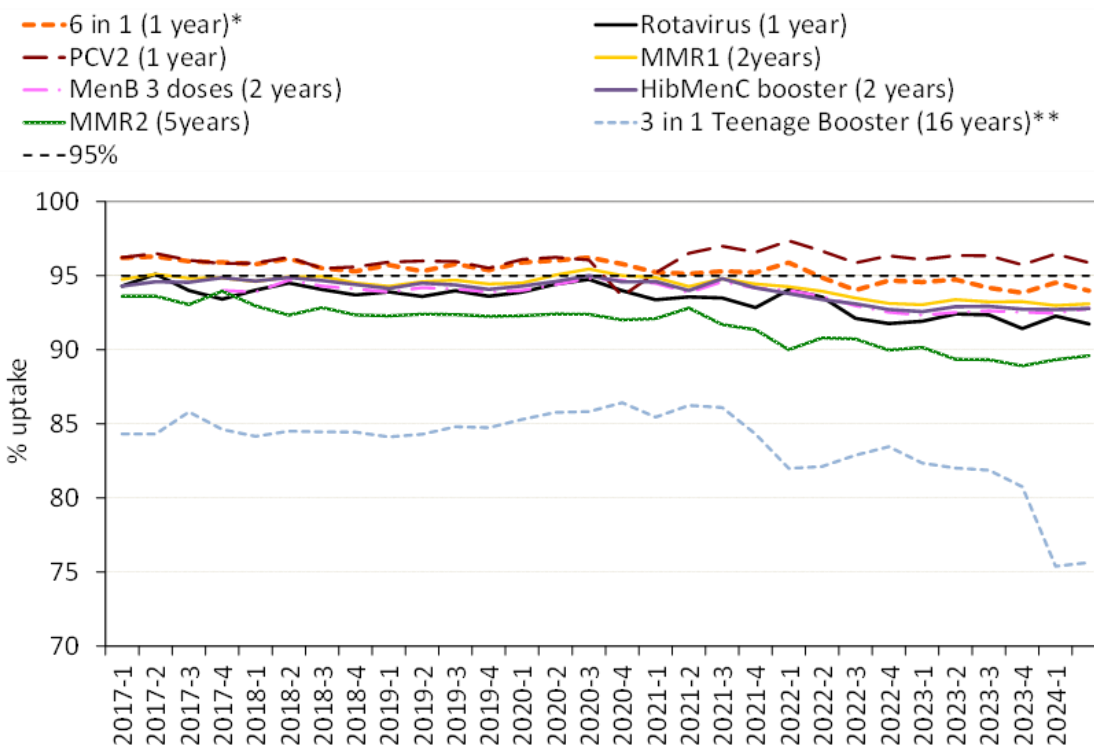


*Uptake data for quarter 3 2014 to quarter 4 2014 presented here are based on estimates calculated in August 2015, rather than published data, due to data quality problems affecting reported uptake of some immunisations in reports published during this period.

**Uptake of pertussis used as a proxy.

***Teenage booster dose of diphtheria, tetanus and polio (diphtheria used as proxy).

Figure 2. Percentage uptake of childhood immunisations in Wales, quarter 1 2017 to quarter 1 2024**



* Uptake of pertussis used as proxy.

** Teenage booster dose of diphtheria, tetanus and polio (diphtheria used as proxy).

***Uptake data for MMR2 at 5 years and the "3 in 1" teenage booster at 16 years from 2015 Q1 to 2018 Q3 are based on estimates calculated in February 2019, rather than published data. This is due to improvements in data quality made during early 2019.

Figure 3. Summary of uptake rates for selected immunisations in resident children reaching their 1st, 2nd and 5th birthday between 01/04/23 and 31/03/24 and resident on 31/03/24.

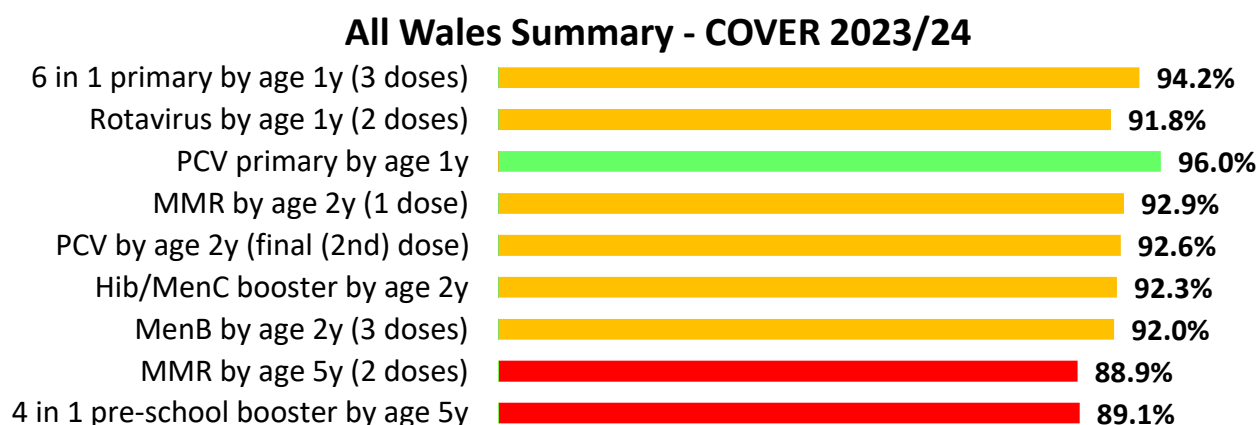


Figure 4. Percentage of resident children reaching their 4th birthday between 01/04/23 and 31/03/24 and are up to date with all scheduled vaccines² by Health Board.



Table 1. Percentage of resident children reaching their 4th birthday and are up to date with all scheduled vaccines by Health Board, annually 2019/20 to 2023/24.

| Area | Up to date in schedule | | | | |
|-----------------------|------------------------|-------------|-------------|-------------|-------------|
| | 2019/20 | 2020/21 | 2021/22 | 2022/23 | 2023/24 |
| Aneurin Bevan UHB | 86.6 | 86.6 | 86.5 | 83.7 | 83.6 |
| Betsi Cadwaladr UHB | 90.3 | 90.1 | 88.5 | 87.3 | 86.4 |
| Cardiff and Vale UHB | 86.7 | 84.5 | 84.2 | 80.5 | 80.4 |
| Cwm Taf Morgannwg UHB | 88.6 | 90.1 | 88.8 | 86.6 | 86.7 |
| Hywel Dda UHB | 86.7 | 86.1 | 86.7 | 84.2 | 83.4 |
| Powys Teaching HB | 90.2 | 90.4 | 89.2 | 90.3 | 89.6 |
| Swansea Bay UHB | 87.6 | 87.0 | 86.9 | 82.8 | 83.6 |
| Wales | 88.0 | 87.6 | 87.0 | 84.5 | 84.3 |

² Completed '4 in 1' pre-school booster, the Hib/MenC booster and second MMR dose by four years of age.

Figure 5. (a) Uptake of '6 in 1' vaccine in Welsh Local Authority areas in children reaching their 1st birthday between 01/04/23 and 31/03/24. **(b)** Uptake of at least 1 dose of MMR immunisation in Welsh Local Authority areas in children reaching their 2nd birthday between 01/04/23 and 31/03/24.

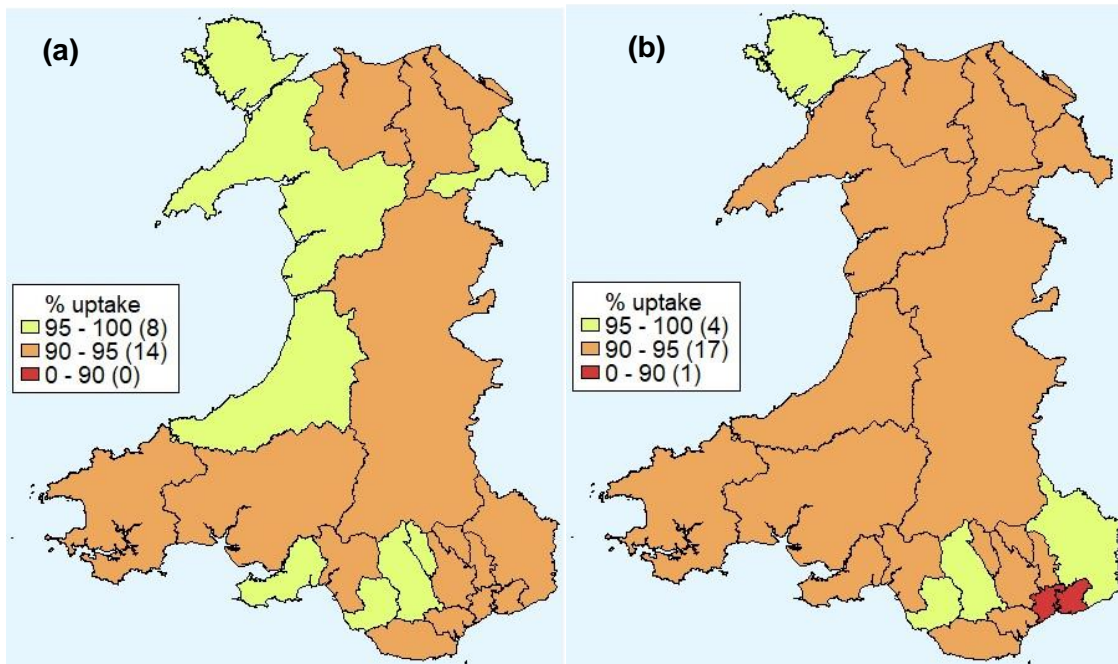


Figure 6. (a) Uptake of two doses of MMR vaccine in Welsh Local Authority areas in children reaching their 5th birthday between 01/04/23 and 31/03/24. **(b)** Uptake of '4 in 1' vaccine in Welsh Local Authority areas in children reaching their 5th birthday between 01/04/23 and 31/03/24.

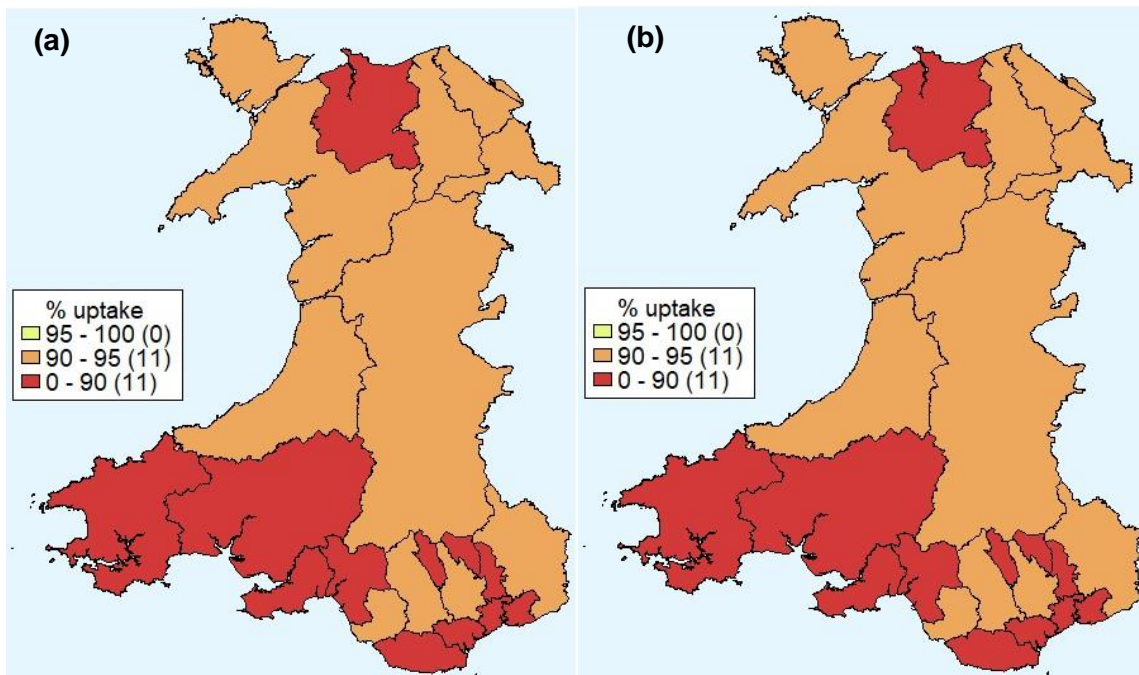


Figure 7. Annual uptake of '6 in 1' vaccine by 1 year of age (2020 – 2024 financial years, ranked by uptake in 2023/24).

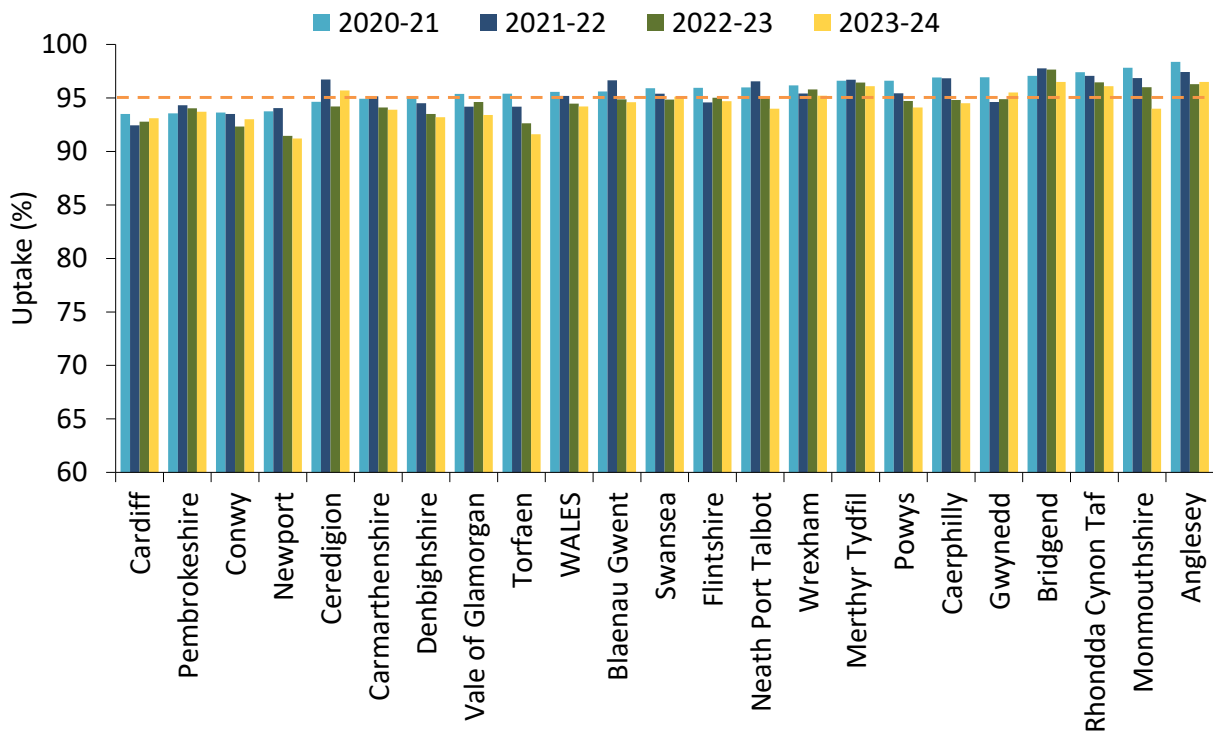


Figure 8. Annual uptake of 1 dose of MMR by 2 years of age (2020 – 2024 financial years, ranked by uptake in 2023/24).

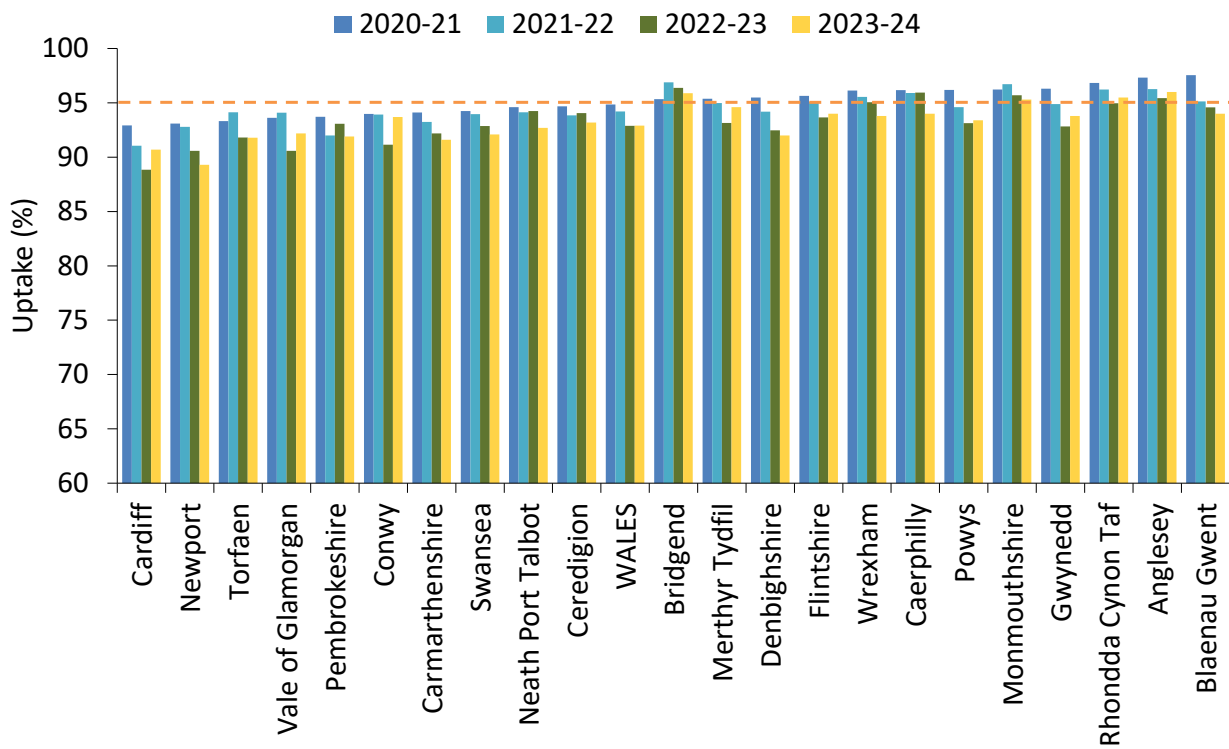


Figure 9. Annual uptake of 2 doses of MMR by 5 years of age (2020 – 2024 financial years, ranked by uptake in 2023/24).

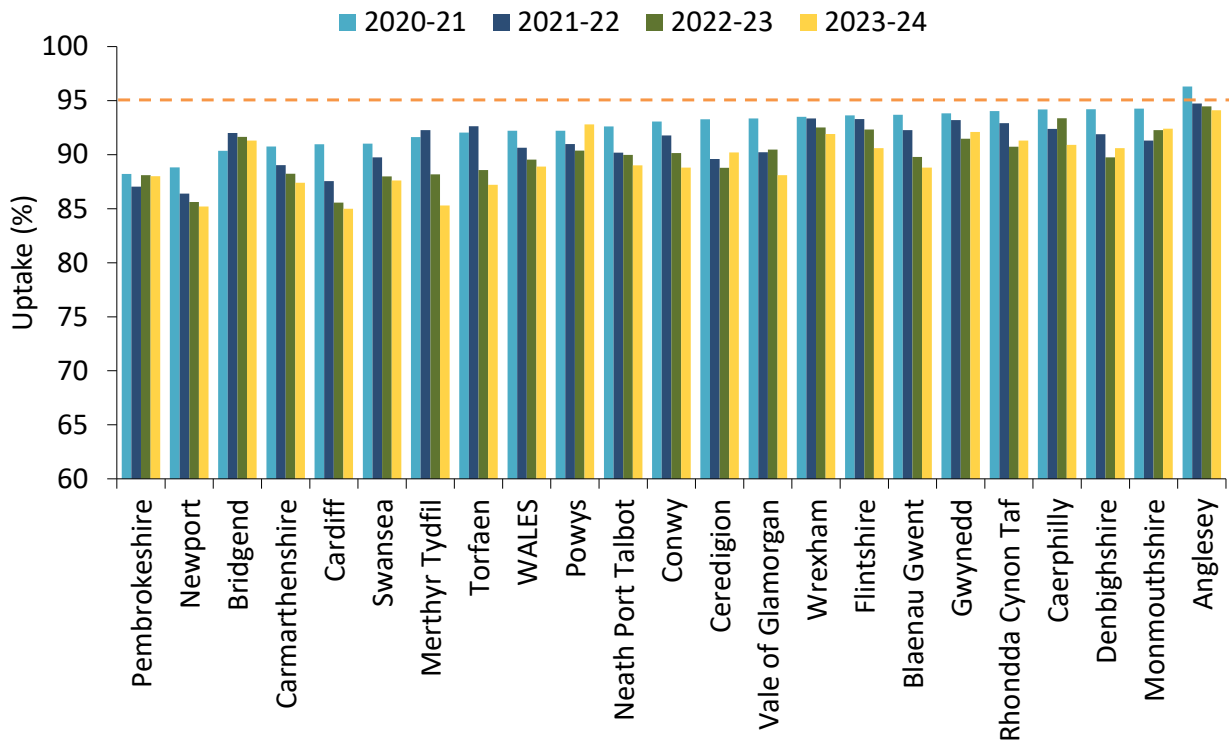


Figure 10. Annual uptake of the '4 in 1' pre-school booster by 5 years of age (2020 – 2024 financial years, ranked by uptake in 2023/24).

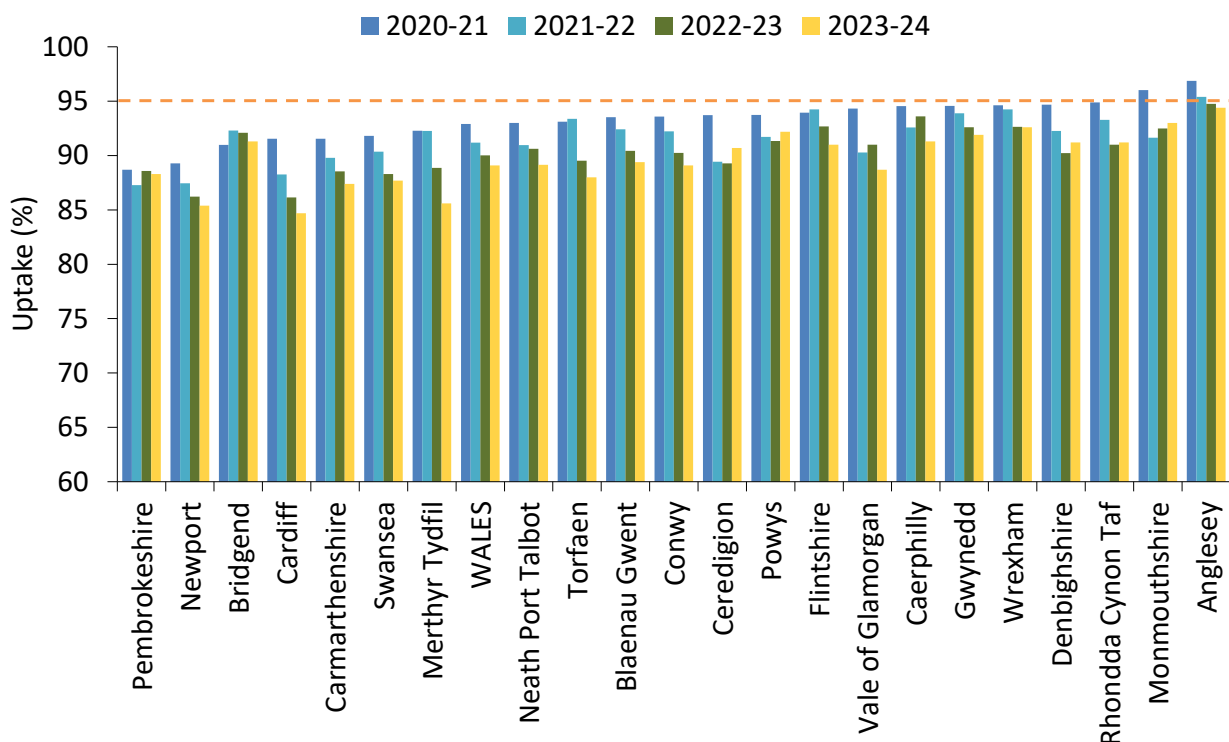
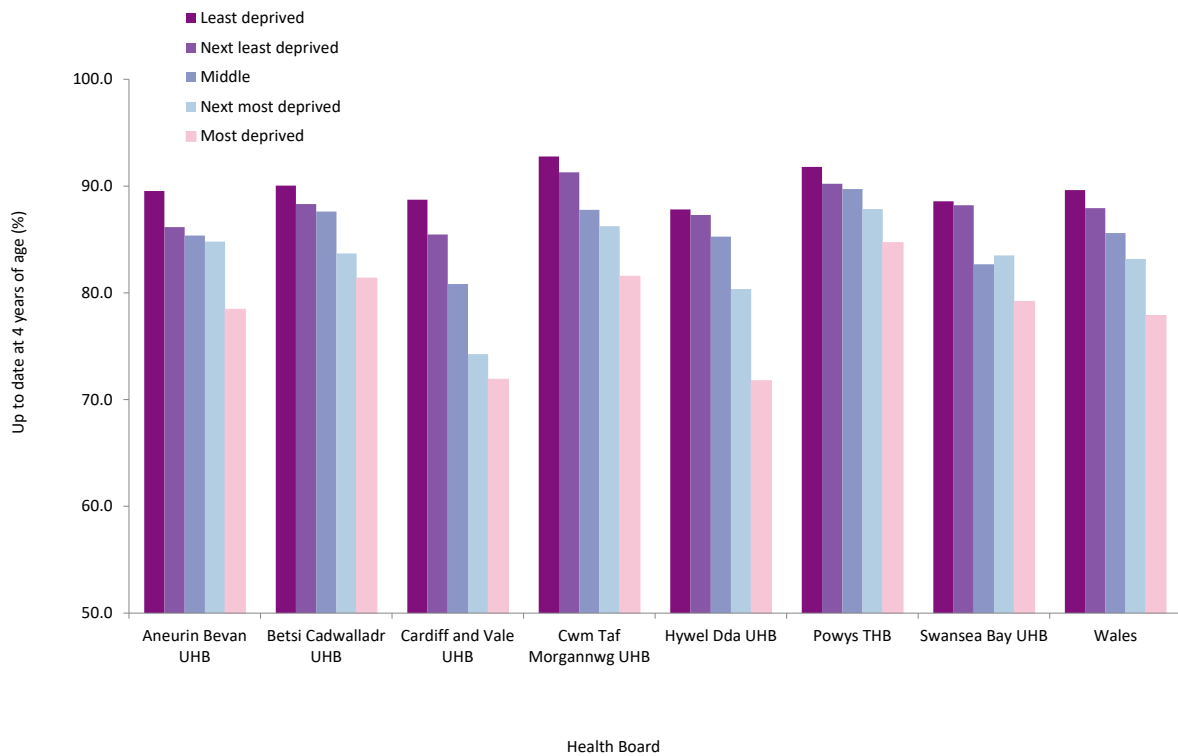
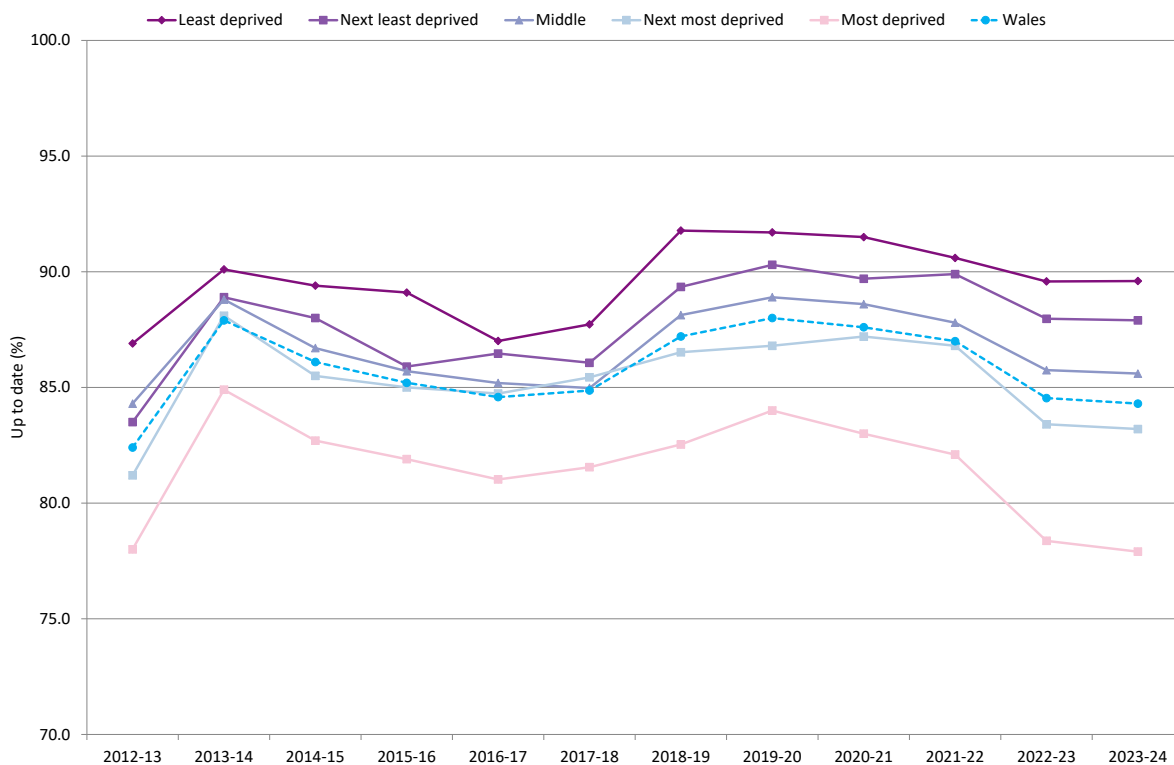


Figure 11. Percentage of children who are up to date with routine immunisations¹ by four years of age, by quintile of deprivation of the Lower Super Output Area in which they reside. Vaccine uptake is presented for children reaching their 4th birthday between 01/04/2023 and 31/03/2024 and resident on 31/03/2024.



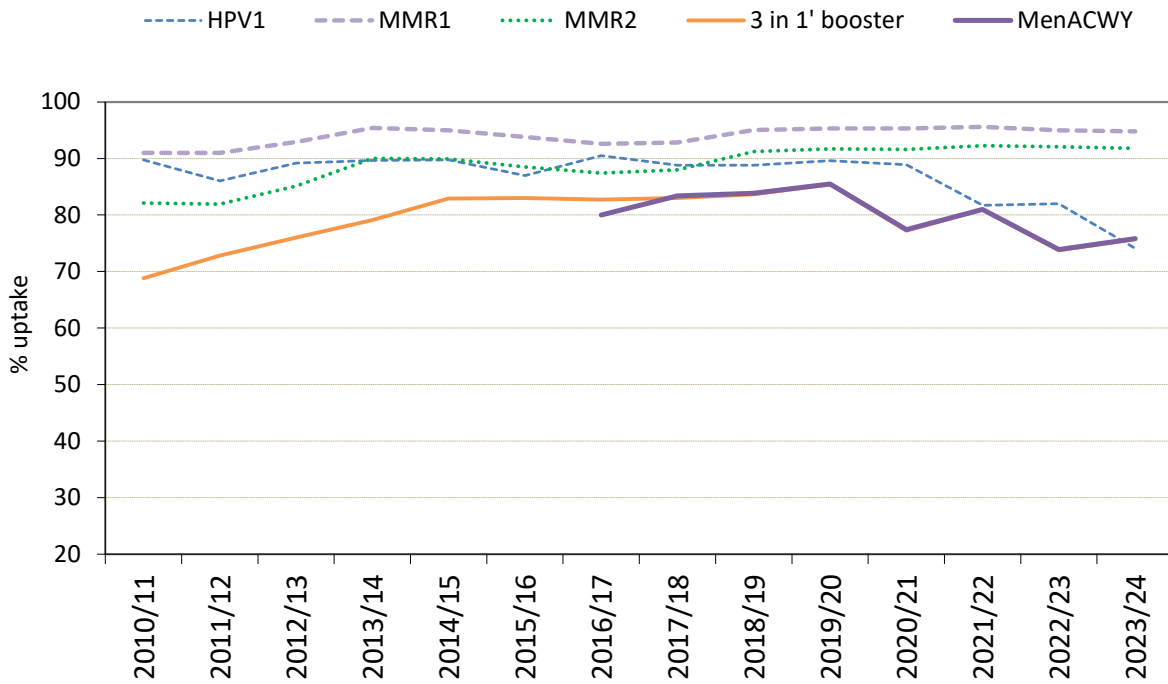
¹ Completed '4 in 1' pre-school booster, the Hib/MenC booster and second MMR dose by four years of age.

Figure 12. Percentage of children who are up to date with routine immunisations¹ by four years of age during 2012-2024 financial years, by quintile of deprivation of the Lower Super Output Area in which they reside.



¹ Completed '4 in 1' pre-school booster, the Hib/MenC booster and second MMR dose by four years of age.

Figure 13. Percentage uptake of the '3 in 1' Td/IPV teenage booster¹, MenACWY, MMR and HPV² vaccines in resident children, in School Year 10 academic years 2010/11 to 2023/24.³



¹Teenage booster dose of diphtheria, tetanus and polio (diphtheria used as proxy)

² From September 2023 the HPV vaccination programme changed from a two dose to a one-dose-only schedule.

³Data in resident children as at 31st March of the academic year reported on.

Table 3. Vaccine uptake in children reaching their 1st birthday between 01/04/2023 and 31/03/2024 and resident on 31/03/2024.

| Area | Resident children | D3 | T3 | P3 | Po3 | Hib3 | HepB | MMR1 | Rotavirus | PCV | HibMenCb | MenB ¹ |
|---|-------------------|-------------------|-------------------|-------------------|-------------------|-------------------|-------------------|----------------|-------------------|-------------------|---------------|-------------------|
| | (n) | (n) (%) | (n) (%) | (n) (%) | (n) (%) | (n) (%) | (n) (%) | (n) (%) | (n) (%) | (n) (%) | (n) (%) | (n) (%) |
| <u>Aneurin Bevan University HB</u> | | | | | | | | | | | | |
| Blaenau Gwent LA | 665 | 629 94.6 | 629 94.6 | 629 94.6 | 629 94.6 | 629 94.6 | 629 94.6 | 3 0.5 | 609 91.6 | 642 96.5 | 1 0.2 | 631 94.9 |
| Caerphilly LA | 1637 | 1547 94.5 | 1547 94.5 | 1547 94.5 | 1547 94.5 | 1547 94.5 | 1548 94.6 | 6 0.4 | 1494 91.3 | 1589 97.1 | 4 0.2 | 1547 94.5 |
| Monmouthshire LA | 781 | 734 94.0 | 734 94 | 734 94.0 | 734 94.0 | 734 94.0 | 732 93.7 | 1 0.1 | 711 91.0 | 743 95.1 | 2 0.3 | 735 94.1 |
| Newport LA | 1912 | 1744 91.2 | 1744 91.2 | 1744 91.2 | 1744 91.2 | 1744 91.2 | 1746 91.3 | 12 0.6 | 1674 87.6 | 1796 93.9 | 6 0.3 | 1718 89.9 |
| Torfaen LA | 958 | 878 91.6 | 878 91.6 | 878 91.6 | 878 91.6 | 878 91.6 | 877 91.5 | 0 0.0 | 847 88.4 | 904 94.4 | 0 0.0 | 877 91.5 |
| Health Board Total | 5953 | 5532 92.9 | 5532 92.9 | 5532 92.9 | 5532 92.9 | 5532 92.9 | 5532 92.9 | 22 0.4 | 5335 89.6 | 5674 95.3 | 13 0.2 | 5508 92.5 |
| <u>Betsi Cadwaladr University HB</u> | | | | | | | | | | | | |
| Anglesey LA | 537 | 518 96.5 | 518 96.5 | 518 96.5 | 518 96.5 | 518 96.5 | 517 96.3 | 5 0.9 | 510 95.0 | 525 97.8 | 5 0.9 | 520 96.8 |
| Conwy LA | 962 | 895 93.0 | 895 93 | 895 93.0 | 895 93.0 | 895 93.0 | 895 93.0 | 4 0.4 | 887 92.2 | 923 95.9 | 4 0.4 | 898 93.3 |
| Denbighshire LA | 836 | 779 93.2 | 779 93.2 | 779 93.2 | 779 93.2 | 779 93.2 | 778 93.1 | 3 0.4 | 744 89.0 | 804 96.2 | 2 0.2 | 772 92.3 |
| Flintshire LA | 1366 | 1294 94.7 | 1294 94.7 | 1294 94.7 | 1292 94.6 | 1294 94.7 | 1293 94.7 | 3 0.2 | 1269 92.9 | 1319 96.6 | 2 0.1 | 1294 94.7 |
| Gwynedd LA | 970 | 926 95.5 | 926 95.5 | 926 95.5 | 923 95.2 | 925 95.4 | 927 95.6 | 5 0.5 | 897 92.5 | 936 96.5 | 3 0.3 | 921 94.9 |
| Wrexham LA | 1241 | 1182 95.2 | 1182 95.2 | 1182 95.2 | 1181 95.2 | 1181 95.2 | 1182 95.2 | 0 0.0 | 1136 91.5 | 1197 96.5 | 0 0.0 | 1176 94.8 |
| Health Board Total | 5912 | 5594 94.6 | 5594 94.6 | 5594 94.6 | 5588 94.5 | 5591 94.6 | 5593 94.6 | 20 0.3 | 5443 92.1 | 5704 96.5 | 16 0.3 | 5581 94.4 |
| <u>Cardiff and Vale University HB</u> | | | | | | | | | | | | |
| Cardiff LA | 3527 | 3284 93.1 | 3284 93.1 | 3283 93.1 | 3283 93.1 | 3283 93.1 | 3284 93.1 | 37 1.0 | 3169 89.8 | 3340 94.7 | 23 0.7 | 3213 91.1 |
| Vale of Glamorgan LA | 1196 | 1117 93.4 | 1117 93.4 | 1117 93.4 | 1117 93.4 | 1117 93.4 | 1118 93.5 | 8 0.7 | 1092 91.3 | 1151 96.2 | 4 0.3 | 1104 92.3 |
| Health Board Total | 4723 | 4401 93.2 | 4401 93.2 | 4400 93.2 | 4400 93.2 | 4400 93.2 | 4402 93.2 | 45 1.0 | 4261 90.2 | 4491 95.1 | 27 0.6 | 4317 91.4 |
| <u>Cwm Taf Morgannwg University HB</u> | | | | | | | | | | | | |
| Bridgend LA | 1309 | 1263 96.5 | 1263 96.5 | 1263 96.5 | 1263 96.5 | 1263 96.5 | 1262 96.4 | 3 0.2 | 1251 95.6 | 1281 97.9 | 1 0.1 | 1263 96.5 |
| Merthyr Tydfil LA | 586 | 563 96.1 | 563 96.1 | 563 96.1 | 563 96.1 | 563 96.1 | 563 96.1 | 0 0.0 | 551 94.0 | 574 98.0 | 0 0.0 | 566 96.6 |
| Rhondda Cynon Taf LA | 2280 | 2191 96.1 | 2191 96.1 | 2191 96.1 | 2191 96.1 | 2191 96.1 | 2191 96.1 | 7 0.3 | 2145 94.1 | 2216 97.2 | 1 0.0 | 2174 95.4 |
| Health Board Total | 4175 | 4017 96.2 | 4017 96.2 | 4017 96.2 | 4017 96.2 | 4017 96.2 | 4016 96.2 | 10 0.2 | 3947 94.5 | 4071 97.5 | 2 0.0 | 4003 95.9 |
| <u>Hywel Dda University HB</u> | | | | | | | | | | | | |
| Carmarthenshire LA | 1592 | 1495 93.9 | 1495 93.9 | 1495 93.9 | 1495 93.9 | 1495 93.9 | 1494 93.8 | 4 0.3 | 1473 92.5 | 1526 95.9 | 2 0.1 | 1490 93.6 |
| Ceredigion LA | 489 | 468 95.7 | 468 95.7 | 468 95.7 | 468 95.7 | 468 95.7 | 469 95.9 | 0 0.0 | 452 92.4 | 470 96.1 | 0 0.0 | 468 95.7 |
| Pembrokeshire LA | 1010 | 946 93.7 | 946 93.7 | 946 93.7 | 946 93.7 | 946 93.7 | 947 93.8 | 2 0.2 | 940 93.1 | 966 95.6 | 1 0.1 | 940 93.1 |
| Health Board Total | 3091 | 2909 94.1 | 2909 94.1 | 2909 94.1 | 2909 94.1 | 2909 94.1 | 2910 94.1 | 6 0.2 | 2865 92.7 | 2962 95.8 | 3 0.1 | 2898 93.8 |
| <u>Powys Teaching HB</u> | | | | | | | | | | | | |
| Health Board Total | 943 | 887 94.1 | 887 94.1 | 887 94.1 | 887 94.1 | 887 94.1 | 887 94.1 | 2 0.2 | 867 91.9 | 892 94.6 | 2 0.2 | 883 93.6 |
| <u>Swansea Bay University HB</u> | | | | | | | | | | | | |
| Neath Port Talbot LA | 1258 | 1183 94.0 | 1183 94 | 1183 94.0 | 1183 94.0 | 1183 94.0 | 1185 94.2 | 2 0.2 | 1168 92.8 | 1217 96.7 | 1 0.1 | 1181 93.9 |
| Swansea LA | 2066 | 1964 95.1 | 1964 95.1 | 1964 95.1 | 1963 95.0 | 1964 95.1 | 1957 94.7 | 13 0.6 | 1920 92.9 | 1979 95.8 | 0 0.0 | 1915 92.7 |
| Health Board Total | 3324 | 3147 94.7 | 3147 94.7 | 3147 94.7 | 3146 94.6 | 3147 94.7 | 3142 94.5 | 15 0.5 | 3088 92.9 | 3196 96.1 | 1 0.0 | 3096 93.1 |
| Unknown | 3 | 2 66.7 | 2 66.7 | 2 66.7 | 2 66.7 | 2 66.7 | 2 66.7 | 0 0.0 | 2 66.7 | 2 66.7 | 0 0.0 | 2 66.7 |
| Wales Total | 28124 | 26489 94.2 | 26489 94.2 | 26488 94.2 | 26481 94.2 | 26485 94.2 | 26485 94.2 | 120 0.4 | 25808 91.8 | 26992 96.0 | 64 0.2 | 26288 93.5 |

¹Uptake of two doses of meningococcal serogroup B (MenB) vaccine, scheduled at two and four months of age.

Table 4. Vaccine uptake in children reaching their 2nd birthday between 01/04/2023 and 31/03/2024 and resident on 31/03/2024.

| Area | Resident children | D3 | | T3 | | P3 | | Po3 | | Hib3 | | MMR1 | | MenB ¹ | | PCV2 ² | | PCVf ³ | | HibMenCb | |
|--|-------------------|--------------|-------------|--------------|-------------|--------------|-------------|--------------|-------------|--------------|-------------|--------------|-------------|-------------------|-------------|-------------------|-------------|-------------------|-------------|--------------|-------------|
| | | (n) | (%) | (n) | (%) | (n) | (%) | (n) | (%) | (n) | (%) | (n) | (%) | (n) | (%) | (n) | (%) | (n) | (%) | (n) | (%) |
| Aneurin Bevan University HB | | | | | | | | | | | | | | | | | | | | | |
| Blaenau Gwent LA | 732 | 701 | 95.8 | 701 | 95.8 | 701 | 95.8 | 701 | 95.8 | 700 | 95.6 | 688 | 94.0 | 686 | 93.7 | 702 | 95.9 | 690 | 94.3 | 683 | 93.3 |
| Caerphilly LA | 1713 | 1640 | 95.7 | 1640 | 95.7 | 1640 | 95.7 | 1640 | 95.7 | 1640 | 95.7 | 1610 | 94.0 | 1603 | 93.6 | 1650 | 96.3 | 1604 | 93.6 | 1602 | 93.5 |
| Monmouthshire LA | 774 | 750 | 96.9 | 750 | 96.9 | 750 | 96.9 | 750 | 96.9 | 750 | 96.9 | 738 | 95.3 | 736 | 95.1 | 749 | 96.8 | 738 | 95.3 | 732 | 94.6 |
| Newport LA | 2018 | 1865 | 92.4 | 1865 | 92.4 | 1865 | 92.4 | 1865 | 92.4 | 1865 | 92.4 | 1802 | 89.3 | 1787 | 88.6 | 1870 | 92.7 | 1789 | 88.7 | 1778 | 88.1 |
| Torfaen LA | 980 | 923 | 94.2 | 923 | 94.2 | 923 | 94.2 | 923 | 94.2 | 923 | 94.2 | 900 | 91.8 | 893 | 91.1 | 930 | 94.9 | 896 | 91.4 | 888 | 90.6 |
| Health Board Total | 6217 | 5879 | 94.6 | 5879 | 94.6 | 5879 | 94.6 | 5879 | 94.6 | 5878 | 94.5 | 5738 | 92.3 | 5705 | 91.8 | 5901 | 94.9 | 5717 | 92.0 | 5683 | 91.4 |
| Betsi Cadwaladr University HB | | | | | | | | | | | | | | | | | | | | | |
| Anglesey LA | 600 | 590 | 98.3 | 590 | 98.3 | 590 | 98.3 | 590 | 98.3 | 590 | 98.3 | 576 | 96.0 | 576 | 96.0 | 587 | 97.8 | 578 | 96.3 | 577 | 96.2 |
| Conwy LA | 964 | 910 | 94.4 | 910 | 94.4 | 910 | 94.4 | 910 | 94.4 | 910 | 94.4 | 903 | 93.7 | 896 | 92.9 | 918 | 95.2 | 896 | 92.9 | 897 | 93.0 |
| Denbighshire LA | 998 | 949 | 95.1 | 949 | 95.1 | 949 | 95.1 | 949 | 95.1 | 949 | 95.1 | 918 | 92.0 | 907 | 90.9 | 944 | 94.6 | 913 | 91.5 | 913 | 91.5 |
| Flintshire LA | 1463 | 1406 | 96.1 | 1406 | 96.1 | 1406 | 96.1 | 1404 | 96.0 | 1405 | 96.0 | 1375 | 94.0 | 1378 | 94.2 | 1408 | 96.2 | 1382 | 94.5 | 1378 | 94.2 |
| Gwynedd LA | 1055 | 1008 | 95.5 | 1008 | 95.5 | 1008 | 95.5 | 1002 | 95.0 | 1007 | 95.5 | 990 | 93.8 | 984 | 93.3 | 998 | 94.6 | 983 | 93.2 | 991 | 93.9 |
| Wrexham LA | 1273 | 1230 | 96.6 | 1230 | 96.6 | 1230 | 96.6 | 1230 | 96.6 | 1230 | 96.6 | 1194 | 93.8 | 1187 | 93.2 | 1232 | 96.8 | 1193 | 93.7 | 1194 | 93.8 |
| Health Board Total | 6353 | 6093 | 95.9 | 6093 | 95.9 | 6093 | 95.9 | 6085 | 95.8 | 6091 | 95.9 | 5956 | 93.8 | 5928 | 93.3 | 6087 | 95.8 | 5945 | 93.6 | 5950 | 93.7 |
| Cardiff and Vale University HB | | | | | | | | | | | | | | | | | | | | | |
| Cardiff LA | 3906 | 3664 | 93.8 | 3664 | 93.8 | 3664 | 93.8 | 3664 | 93.8 | 3663 | 93.8 | 3541 | 90.7 | 3449 | 88.3 | 3643 | 93.3 | 3501 | 89.6 | 3491 | 89.4 |
| Vale of Glamorgan LA | 1301 | 1249 | 96.0 | 1249 | 96.0 | 1249 | 96.0 | 1249 | 96.0 | 1249 | 96.0 | 1199 | 92.2 | 1190 | 91.5 | 1245 | 95.7 | 1194 | 91.8 | 1194 | 91.8 |
| Health Board Total | 5207 | 4913 | 94.4 | 4913 | 94.4 | 4913 | 94.4 | 4913 | 94.4 | 4912 | 94.3 | 4740 | 91.0 | 4639 | 89.1 | 4888 | 93.9 | 4695 | 90.2 | 4685 | 90.0 |
| Cwm Taf Morgannwg University HB | | | | | | | | | | | | | | | | | | | | | |
| Bridgend LA | 1416 | 1384 | 97.7 | 1384 | 97.7 | 1384 | 97.7 | 1384 | 97.7 | 1384 | 97.7 | 1358 | 95.9 | 1361 | 96.1 | 1389 | 98.1 | 1363 | 96.3 | 1361 | 96.1 |
| Merthyr Tydfil LA | 626 | 607 | 97.0 | 607 | 97.0 | 607 | 97.0 | 607 | 97.0 | 607 | 97.0 | 592 | 94.6 | 594 | 94.9 | 609 | 97.3 | 593 | 94.7 | 593 | 94.7 |
| Rhondda Cynon Taf LA | 2382 | 2312 | 97.1 | 2312 | 97.1 | 2312 | 97.1 | 2312 | 97.1 | 2311 | 97.0 | 2275 | 95.5 | 2268 | 95.2 | 2316 | 97.2 | 2283 | 95.8 | 2273 | 95.4 |
| Health Board Total | 4424 | 4303 | 97.3 | 4303 | 97.3 | 4303 | 97.3 | 4303 | 97.3 | 4302 | 97.2 | 4225 | 95.5 | 4223 | 95.5 | 4314 | 97.5 | 4239 | 95.8 | 4227 | 95.5 |
| Hywel Dda University HB | | | | | | | | | | | | | | | | | | | | | |
| Carmarthenshire LA | 1626 | 1546 | 95.1 | 1546 | 95.1 | 1546 | 95.1 | 1546 | 95.1 | 1546 | 95.1 | 1489 | 91.6 | 1477 | 90.8 | 1556 | 95.7 | 1489 | 91.6 | 1481 | 91.1 |
| Ceredigion LA | 556 | 533 | 95.9 | 533 | 95.9 | 533 | 95.9 | 533 | 95.9 | 533 | 95.9 | 518 | 93.2 | 512 | 92.1 | 533 | 95.9 | 520 | 93.5 | 512 | 92.1 |
| Pembrokeshire LA | 1074 | 1022 | 95.2 | 1022 | 95.2 | 1022 | 95.2 | 1022 | 95.2 | 1022 | 95.2 | 987 | 91.9 | 978 | 91.1 | 1033 | 96.2 | 990 | 92.2 | 981 | 91.3 |
| Health Board Total | 3256 | 3101 | 95.2 | 3101 | 95.2 | 3101 | 95.2 | 3101 | 95.2 | 3101 | 95.2 | 2994 | 92.0 | 2967 | 91.1 | 3122 | 95.9 | 2999 | 92.1 | 2974 | 91.3 |
| Powys Teaching HB | | | | | | | | | | | | | | | | | | | | | |
| Health Board Total | 1102 | 1051 | 95.4 | 1051 | 95.4 | 1051 | 95.4 | 1051 | 95.4 | 1052 | 95.5 | 1029 | 93.4 | 1021 | 92.6 | 1048 | 95.1 | 1024 | 92.9 | 1023 | 92.8 |
| Swansea Bay University HB | | | | | | | | | | | | | | | | | | | | | |
| Neath Port Talbot LA | 1322 | 1269 | 96.0 | 1269 | 96.0 | 1269 | 96.0 | 1269 | 96.0 | 1269 | 96.0 | 1225 | 92.7 | 1224 | 92.6 | 1272 | 96.2 | 1227 | 92.8 | 1224 | 92.6 |
| Swansea LA | 2265 | 2162 | 95.5 | 2162 | 95.5 | 2162 | 95.5 | 2164 | 95.5 | 2163 | 95.5 | 2086 | 92.1 | 2042 | 90.2 | 2126 | 93.9 | 2066 | 91.2 | 2053 | 90.6 |
| Health Board Total | 3587 | 3431 | 95.7 | 3431 | 95.7 | 3431 | 95.7 | 3433 | 95.7 | 3432 | 95.7 | 3311 | 92.3 | 3266 | 91.1 | 3398 | 94.7 | 3293 | 91.8 | 3277 | 91.4 |
| Unknown | 11 | 9 | 81.8 | 9 | 81.8 | 9 | 81.8 | 9 | 81.8 | 9 | 81.8 | 9 | 81.8 | 9 | 81.8 | 8 | 72.7 | 9 | 81.8 | 9 | 81.8 |
| Wales Total | 30157 | 28780 | 95.4 | 28780 | 95.4 | 28780 | 95.4 | 28774 | 95.4 | 28777 | 95.4 | 28002 | 92.9 | 27758 | 92.0 | 28766 | 95.4 | 27921 | 92.6 | 27828 | 92.3 |

¹Uptake of three doses of MenB vaccine scheduled at 2, 4 and 12-13 months of age.

² Full primary 2-dose course of pneumococcal conjugate vaccine

³ Final (booster) dose of pneumococcal conjugate vaccine

Table 5. Vaccine uptake in children reaching their 4th birthday between 01/04/2023 and 31/03/2024 and resident on 31/03/2024.

| Area | Resident Children | 4 in 1 Preschool booster ¹ | | HibMenCb | | MMR dose 2 | | Up to date in schedule ² | |
|---|-------------------|---------------------------------------|-------------|--------------|-------------|--------------|-------------|-------------------------------------|-------------|
| | | (n) | (%) | (n) | (%) | (n) | (%) | (n) | (%) |
| <u>Aneurin Bevan University HB</u> | | | | | | | | | |
| Blaenau Gwent LA | 764 | 642 | 84.0 | 715 | 93.6 | 642 | 84.0 | 634 | 83.0 |
| Caerphilly LA | 1828 | 1590 | 87.0 | 1737 | 95.0 | 1590 | 87.0 | 1567 | 85.7 |
| Monmouthshire LA | 834 | 761 | 91.2 | 795 | 95.3 | 759 | 91.0 | 746 | 89.4 |
| Newport LA | 2024 | 1656 | 81.8 | 1784 | 88.1 | 1647 | 81.4 | 1595 | 78.8 |
| Torfaen LA | 1006 | 865 | 86.0 | 938 | 93.2 | 864 | 85.9 | 856 | 85.1 |
| Health Board Total | 6456 | 5514 | 85.4 | 5969 | 92.5 | 5502 | 85.2 | 5398 | 83.6 |
| <u>Betsi Cadwaladr University HB</u> | | | | | | | | | |
| Anglesey LA | 580 | 539 | 92.9 | 561 | 96.7 | 537 | 92.6 | 533 | 91.9 |
| Conwy LA | 1057 | 903 | 85.4 | 1002 | 94.8 | 902 | 85.3 | 892 | 84.4 |
| Denbighshire LA | 1014 | 854 | 84.2 | 952 | 93.9 | 851 | 83.9 | 845 | 83.3 |
| Flintshire LA | 1484 | 1286 | 86.7 | 1408 | 94.9 | 1287 | 86.7 | 1280 | 86.3 |
| Gwynedd LA | 1083 | 959 | 88.6 | 1020 | 94.2 | 959 | 88.6 | 946 | 87.3 |
| Wrexham LA | 1378 | 1228 | 89.1 | 1309 | 95.0 | 1224 | 88.8 | 1206 | 87.5 |
| Health Board Total | 6596 | 5769 | 87.5 | 6252 | 94.8 | 5760 | 87.3 | 5702 | 86.4 |
| <u>Cardiff and Vale University HB</u> | | | | | | | | | |
| Cardiff LA | 3940 | 3191 | 81.0 | 3520 | 89.3 | 3187 | 80.9 | 3086 | 78.3 |
| Vale of Glamorgan LA | 1338 | 1175 | 87.8 | 1263 | 94.4 | 1171 | 87.5 | 1156 | 86.4 |
| Health Board Total | 5278 | 4366 | 82.7 | 4783 | 90.6 | 4358 | 82.6 | 4242 | 80.4 |
| <u>Cwm Taf Morgannwg University HB</u> | | | | | | | | | |
| Bridgend LA | 1402 | 1255 | 89.5 | 1345 | 95.9 | 1257 | 89.7 | 1238 | 88.3 |
| Merthyr Tydfil LA | 658 | 563 | 85.6 | 619 | 94.1 | 561 | 85.3 | 553 | 84.0 |
| Rhondda Cynon Taf LA | 2529 | 2228 | 88.1 | 2386 | 94.3 | 2235 | 88.4 | 2187 | 86.5 |
| Health Board Total | 4589 | 4046 | 88.2 | 4350 | 94.8 | 4053 | 88.3 | 3978 | 86.7 |
| <u>Hywel Dda University HB</u> | | | | | | | | | |
| Carmarthenshire LA | 1790 | 1503 | 84.0 | 1666 | 93.1 | 1510 | 84.4 | 1481 | 82.7 |
| Ceredigion LA | 588 | 521 | 88.6 | 542 | 92.2 | 521 | 88.6 | 515 | 87.6 |
| Pembrokeshire LA | 1145 | 956 | 83.5 | 1058 | 92.4 | 956 | 83.5 | 942 | 82.3 |
| Health Board Total | 3523 | 2980 | 84.6 | 3266 | 92.7 | 2987 | 84.8 | 2938 | 83.4 |
| <u>Powys Teaching HB</u> | | | | | | | | | |
| Health Board Total | 1107 | 1006 | 90.9 | 1052 | 95.0 | 1004 | 90.7 | 992 | 89.6 |
| <u>Swansea Bay University HB</u> | | | | | | | | | |
| Neath Port Talbot LA | 1314 | 1105 | 84.1 | 1246 | 94.8 | 1107 | 84.2 | 1094 | 83.3 |
| Swansea LA | 2457 | 2117 | 86.2 | 2242 | 91.2 | 2121 | 86.3 | 2059 | 83.8 |
| Health Board Total | 3771 | 3222 | 85.4 | 3488 | 92.5 | 3228 | 85.6 | 3153 | 83.6 |
| Unknown | 9 | 4 | 44.4 | 7 | 77.8 | 5 | 55.6 | 4 | 44.4 |
| Wales Total | 31329 | 26907 | 85.9 | 29167 | 93.1 | 26897 | 85.9 | 26407 | 84.3 |

¹ Uptake of acellular pertussis used as proxy

² Completed '4 in 1' preschool booster, the Hib/MenC booster and second MMR dose by four years of age.

Table 6. Percentages of children who are up to date with routine immunisations¹ by four years of age, by quintile of deprivation of the Lower Super Output Area in which they reside. Vaccine uptake is presented for children reaching their 4th birthday between 01/04/2023 and 31/03/2024 and resident on 31/03/2024.

| Health Board | Least deprived | | | Next least deprived | | | Middle | | | Next most deprived | | | Most deprived | | |
|-----------------------------|-------------------|------------------|-------------|---------------------|------------------|-------------|-------------------|------------------|-------------|--------------------|------------------|-------------|-------------------|------------------|-------------|
| | Resident children | Up to date by 4y | | Resident children | Up to date by 4y | | Resident children | Up to date by 4y | | Resident children | Up to date by 4y | | Resident children | Up to date by 4y | |
| | (n) | (n) | (%) | (n) | (n) | (%) | (n) | (n) | (%) | (n) | (n) | (%) | (n) | (n) | (%) |
| Aneurin Bevan | 908 | 813 | 89.5 | 881 | 759 | 86.2 | 1210 | 1033 | 85.4 | 1276 | 1082 | 84.8 | 2181 | 1711 | 78.5 |
| Betsi Cadwalladr University | 1246 | 1122 | 90.0 | 1540 | 1360 | 88.3 | 1437 | 1259 | 87.6 | 1281 | 1072 | 83.7 | 1090 | 887 | 81.4 |
| Cardiff and Vale University | 1693 | 1502 | 88.7 | 619 | 529 | 85.5 | 699 | 565 | 80.8 | 680 | 505 | 74.3 | 1587 | 1141 | 71.9 |
| Cwm Taf Morgannwg | 623 | 578 | 92.8 | 597 | 545 | 91.3 | 597 | 524 | 87.8 | 1498 | 1292 | 86.2 | 1274 | 1039 | 81.6 |
| Hywel Dda | 164 | 144 | 87.8 | 1054 | 920 | 87.3 | 1168 | 996 | 85.3 | 718 | 577 | 80.4 | 418 | 300 | 71.8 |
| Powys Teaching | 134 | 123 | 91.8 | 460 | 415 | 90.2 | 321 | 288 | 89.7 | 107 | 94 | 87.9 | 85 | 72 | 84.7 |
| Swansea Bay University | 814 | 721 | 88.6 | 441 | 389 | 88.2 | 508 | 420 | 82.7 | 758 | 633 | 83.5 | 1250 | 990 | 79.2 |
| Wales Total | 5582 | 5003 | 89.6 | 5592 | 4917 | 87.9 | 5940 | 5085 | 85.6 | 6318 | 5255 | 83.2 | 7885 | 6140 | 77.9 |

¹Completed '4 in 1' preschool booster, the Hib/MenC booster and second MMR dose by four years of age.

Table 7. Vaccine uptake in children reaching their 5th birthday between 01/04/2023 and 31/03/2024 and resident on 31/03/2024.

| Area | Resident children | D3 | T3 | P3 | Po3 | Hib3 | PCVf ¹ | HibMenCb | MMR1 | MMR2 | D4 | T4 | aP | Po4 |
|---|-------------------|-------------------|-------------------|-------------------|-------------------|-------------------|-------------------|-------------------|-------------------|-------------------|-------------------|-------------------|-------------------|-------------------|
| | (n) | (n) (%) | (n) (%) | (n) (%) | (n) (%) | (n) (%) | (n) (%) | (n) (%) | (n) (%) | (n) (%) | (n) (%) | (n) (%) | (n) (%) | (n) (%) |
| <u>Aneurin Bevan University HB</u> | | | | | | | | | | | | | | |
| Blaenau Gwent LA | 735 | 701 95.4 | 701 95.4 | 701 95.4 | 701 95.4 | 701 95.4 | 687 93.5 | 684 93.1 | 692 94.1 | 653 88.8 | 657 89.4 | 657 89.4 | 657 89.4 | 656 89.3 |
| Caerphilly LA | 1905 | 1855 97.4 | 1855 97.4 | 1855 97.4 | 1855 97.4 | 1855 97.4 | 1815 95.3 | 1822 95.6 | 1845 96.9 | 1732 90.9 | 1740 91.3 | 1740 91.3 | 1740 91.3 | 1740 91.3 |
| Monmouthshire LA | 873 | 837 95.9 | 837 95.9 | 837 95.9 | 837 95.9 | 837 95.9 | 837 95.9 | 813 93.1 | 820 93.9 | 840 96.2 | 807 92.4 | 812 93.0 | 812 93.0 | 812 93.0 |
| Newport LA | 2095 | 1926 91.9 | 1925 91.9 | 1926 91.9 | 1927 92.0 | 1926 91.9 | 1850 88.3 | 1859 88.7 | 1920 91.6 | 1784 85.2 | 1790 85.4 | 1790 85.4 | 1790 85.4 | 1790 85.4 |
| Torfaen LA | 1040 | 992 95.4 | 992 95.4 | 992 95.4 | 992 95.4 | 992 95.4 | 960 92.3 | 960 92.3 | 978 94.0 | 907 87.2 | 915 88.0 | 915 88.0 | 915 88.0 | 915 88.0 |
| Health Board Total | 6648 | 6311 94.9 | 6310 94.9 | 6311 94.9 | 6312 94.9 | 6311 94.9 | 6125 92.1 | 6145 92.4 | 6275 94.4 | 5883 88.5 | 5914 89.0 | 5914 89.0 | 5914 89.0 | 5913 88.9 |
| <u>Betsi Cadwaladr University HB</u> | | | | | | | | | | | | | | |
| Anglesey LA | 642 | 630 98.1 | 630 98.1 | 630 98.1 | 630 98.1 | 630 98.1 | 621 96.7 | 624 97.2 | 626 97.5 | 604 94.1 | 606 94.4 | 606 94.4 | 606 94.4 | 606 94.4 |
| Conwy LA | 1041 | 997 95.8 | 997 95.8 | 997 95.8 | 997 95.8 | 995 95.6 | 996 95.7 | 963 92.5 | 985 94.6 | 924 88.8 | 928 89.1 | 928 89.1 | 927 89.0 | 927 89.0 |
| Denbighshire LA | 1018 | 967 95.0 | 967 95.0 | 967 95.0 | 967 95.0 | 967 95.0 | 967 95.0 | 949 93.2 | 970 95.3 | 978 96.1 | 922 90.6 | 928 91.2 | 928 91.2 | 927 91.1 |
| Flintshire LA | 1561 | 1495 95.8 | 1495 95.8 | 1495 95.8 | 1495 95.8 | 1494 95.7 | 1493 95.6 | 1466 93.9 | 1479 94.7 | 1497 95.9 | 1414 90.6 | 1420 91.0 | 1420 91.0 | 1420 91.0 |
| Gwynedd LA | 1113 | 1068 96.0 | 1068 96.0 | 1068 96.0 | 1065 95.7 | 1068 96.0 | 1038 93.3 | 1053 94.6 | 1063 95.5 | 1025 92.1 | 1023 91.9 | 1023 91.9 | 1023 91.9 | 1023 91.9 |
| Wrexham LA | 1425 | 1354 95.0 | 1354 95.0 | 1354 95.0 | 1354 95.0 | 1353 94.9 | 1353 94.9 | 1318 92.5 | 1343 94.2 | 1364 95.7 | 1310 91.9 | 1319 92.6 | 1319 92.6 | 1320 92.6 |
| Health Board Total | 6800 | 6511 95.8 | 6511 95.8 | 6511 95.8 | 6504 95.6 | 6507 95.7 | 6355 93.5 | 6454 94.9 | 6516 95.8 | 6199 91.2 | 6224 91.5 | 6224 91.5 | 6223 91.5 | 6223 91.5 |
| <u>Cardiff and Vale University HB</u> | | | | | | | | | | | | | | |
| Cardiff LA | 4147 | 3822 92.2 | 3822 92.2 | 3821 92.1 | 3820 92.1 | 3816 92.0 | 3579 86.3 | 3698 89.2 | 3840 92.6 | 3527 85.0 | 3514 84.7 | 3514 84.7 | 3514 84.7 | 3513 84.7 |
| Vale of Glamorgan LA | 1502 | 1423 94.7 | 1422 94.7 | 1423 94.7 | 1421 94.6 | 1422 94.7 | 1364 90.8 | 1404 93.5 | 1418 94.4 | 1324 88.1 | 1333 88.7 | 1333 88.7 | 1333 88.7 | 1333 88.7 |
| Health Board Total | 5649 | 5245 92.8 | 5244 92.8 | 5244 92.8 | 5241 92.8 | 5238 92.7 | 4943 87.5 | 5102 90.3 | 5258 93.1 | 4851 85.9 | 4847 85.8 | 4847 85.8 | 4847 85.8 | 4846 85.8 |
| <u>Cwm Taf Morgannwg University HB</u> | | | | | | | | | | | | | | |
| Bridgend LA | 1535 | 1497 97.5 | 1497 97.5 | 1497 97.5 | 1496 97.5 | 1497 97.5 | 1450 94.5 | 1465 95.4 | 1485 96.7 | 1401 91.3 | 1401 91.3 | 1401 91.3 | 1401 91.3 | 1401 91.3 |
| Merthyr Tydfil LA | 714 | 674 94.4 | 674 94.4 | 674 94.4 | 674 94.4 | 674 94.4 | 659 92.3 | 655 91.7 | 672 94.1 | 609 85.3 | 611 85.6 | 611 85.6 | 610 85.4 | 610 85.4 |
| Rhondda Cynon Taf LA | 2647 | 2576 97.3 | 2575 97.3 | 2575 97.3 | 2576 97.3 | 2573 97.2 | 2518 95.1 | 2520 95.2 | 2564 96.9 | 2416 91.3 | 2415 91.2 | 2415 91.2 | 2416 91.3 | 2416 91.3 |
| Health Board Total | 4896 | 4747 97.0 | 4746 96.9 | 4746 96.9 | 4746 96.9 | 4744 96.9 | 4627 94.5 | 4640 94.8 | 4721 96.4 | 4426 90.4 | 4427 90.4 | 4427 90.4 | 4427 90.4 | 4427 90.4 |
| <u>Hywel Dda University HB</u> | | | | | | | | | | | | | | |
| Carmarthenshire LA | 1882 | 1800 95.6 | 1800 95.6 | 1800 95.6 | 1798 95.5 | 1795 95.4 | 1738 92.3 | 1775 94.3 | 1792 95.2 | 1644 87.4 | 1645 87.4 | 1645 87.4 | 1644 87.4 | 1642 87.2 |
| Ceredigion LA | 602 | 580 96.3 | 580 96.3 | 580 96.3 | 580 96.3 | 577 95.8 | 559 92.9 | 566 94.0 | 570 94.7 | 543 90.2 | 546 90.7 | 546 90.7 | 546 90.7 | 546 90.7 |
| Pembrokeshire LA | 1164 | 1119 96.1 | 1119 96.1 | 1119 96.1 | 1119 96.1 | 1118 96.0 | 1082 93.0 | 1093 93.9 | 1107 95.1 | 1024 88.0 | 1028 88.3 | 1028 88.3 | 1028 88.3 | 1028 88.3 |
| Health Board Total | 3648 | 3499 95.9 | 3499 95.9 | 3499 95.9 | 3497 95.9 | 3490 95.7 | 3379 92.6 | 3434 94.1 | 3469 95.1 | 3211 88.0 | 3219 88.2 | 3219 88.2 | 3218 88.2 | 3216 88.2 |
| <u>Powys Teaching HB</u> | | | | | | | | | | | | | | |
| Health Board Total | 1253 | 1199 95.7 | 1199 95.7 | 1199 95.7 | 1200 95.8 | 1197 95.5 | 1185 94.6 | 1191 95.1 | 1208 96.4 | 1163 92.8 | 1155 92.2 | 1155 92.2 | 1154 92.1 | 1155 92.2 |
| <u>Swansea Bay University HB</u> | | | | | | | | | | | | | | |
| Neath Port Talbot LA | 1439 | 1392 96.7 | 1392 96.7 | 1392 96.7 | 1391 96.7 | 1391 96.7 | 1349 93.7 | 1368 95.1 | 1379 95.8 | 1280 89.0 | 1283 89.2 | 1283 89.2 | 1283 89.2 | 1283 89.2 |
| Swansea LA | 2549 | 2412 94.6 | 2412 94.6 | 2412 94.6 | 2412 94.6 | 2409 94.5 | 2281 89.5 | 2325 91.2 | 2389 93.7 | 2234 87.6 | 2236 87.7 | 2236 87.7 | 2234 87.6 | 2234 87.6 |
| Health Board Total | 3988 | 3804 95.4 | 3804 95.4 | 3804 95.4 | 3803 95.4 | 3800 95.3 | 3630 91.0 | 3693 92.6 | 3768 94.5 | 3514 88.1 | 3519 88.2 | 3519 88.2 | 3517 88.2 | 3517 88.2 |
| Unknown | 11 | 10 90.9 | 10 90.9 | 10 90.9 | 10 90.9 | 10 90.9 | 10 90.9 | 10 90.9 | 10 90.9 | 10 90.9 | 10 90.9 | 10 90.9 | 10 90.9 | 10 90.9 |
| Wales Total | 32893 | 31326 95.2 | 31323 95.2 | 31324 95.2 | 31313 95.2 | 31297 95.1 | 30254 92.0 | 30669 93.2 | 31225 94.9 | 29257 88.9 | 29315 89.1 | 29315 89.1 | 29313 89.1 | 29307 89.1 |

¹ Final (booster) dose of pneumococcal conjugate vaccine

Table 8. HPV Vaccine uptake in children reaching their 14th, 15th and 16th birthdays between 01/09/2023 and 31/08/2024 and resident on 31/03/2024 (School Year 9, 10 and 11 during 2022/23).

| | 14 years (2023-24 School Year 9) | | | 15 years (2023-24 School Year 10) | | | 16 years (2023-24 School Year 11) | | |
|---|----------------------------------|--------------|-------------|-----------------------------------|--------------|-------------|-----------------------------------|--------------|-------------|
| Area | Resident Children | HPV 1 dose | | Resident Children | HPV 1 dose | | Resident children | HPV 1 dose | |
| | | (n) | (%) | | (n) | (%) | | (n) | (%) |
| <u>Aneurin Bevan University HB</u> | | | | | | | | | |
| Blaenau Gwent LA | 829 | 458 | 55.2 | 808 | 562 | 69.6 | 866 | 705 | 81.4 |
| Caerphilly LA | 2263 | 1451 | 64.1 | 2216 | 1546 | 69.8 | 2287 | 1924 | 84.1 |
| Monmouthshire LA | 1093 | 695 | 63.6 | 1136 | 806 | 71.0 | 1133 | 878 | 77.5 |
| Newport LA | 2246 | 1271 | 56.6 | 2197 | 1375 | 62.6 | 2306 | 1663 | 72.1 |
| Torfaen LA | 1204 | 741 | 61.5 | 1183 | 831 | 70.2 | 1161 | 955 | 82.3 |
| Health Board Total | 7635 | 4616 | 60.5 | 7540 | 5120 | 67.9 | 7753 | 6125 | 79.0 |
| <u>Betsi Cadwaladr University HB</u> | | | | | | | | | |
| Anglesey LA | 816 | 552 | 67.6 | 822 | 654 | 79.6 | 819 | 682 | 83.3 |
| Conwy LA | 1346 | 761 | 56.5 | 1247 | 910 | 73.0 | 1271 | 1035 | 81.4 |
| Denbighshire LA | 1201 | 588 | 49.0 | 1208 | 772 | 63.9 | 1257 | 890 | 70.8 |
| Flintshire LA | 1844 | 1315 | 71.3 | 1798 | 1436 | 79.9 | 1831 | 1507 | 82.3 |
| Gwynedd LA | 1403 | 956 | 68.1 | 1331 | 1052 | 79.0 | 1322 | 1135 | 85.9 |
| Wrexham LA | 1644 | 1095 | 66.6 | 1633 | 1262 | 77.3 | 1671 | 1416 | 84.7 |
| Health Board Total | 8254 | 5267 | 63.8 | 8039 | 6086 | 75.7 | 8171 | 6665 | 81.6 |
| <u>Cardiff and Vale University HB</u> | | | | | | | | | |
| Cardiff LA | 4616 | 2818 | 61.0 | 4628 | 2619 | 56.6 | 4613 | 3496 | 75.8 |
| Vale of Glamorgan LA | 1745 | 1216 | 69.7 | 1687 | 1162 | 68.9 | 1722 | 1407 | 81.7 |
| Health Board Total | 6361 | 4034 | 63.4 | 6315 | 3781 | 59.9 | 6335 | 4903 | 77.4 |
| <u>Cwm Taf Morgannwg University HB</u> | | | | | | | | | |
| Bridgend LA | 1808 | 1313 | 72.6 | 1694 | 1437 | 84.8 | 1716 | 1549 | 90.3 |
| Merthyr Tydfil LA | 700 | 473 | 67.6 | 754 | 543 | 72.0 | 783 | 674 | 86.1 |
| Rhondda Cynon Taf LA | 3039 | 2188 | 72.0 | 3018 | 2571 | 85.2 | 2973 | 2623 | 88.2 |
| Health Board Total | 5547 | 3974 | 71.6 | 5466 | 4551 | 83.3 | 5472 | 4846 | 88.6 |
| <u>Hywel Dda University HB</u> | | | | | | | | | |
| Carmarthenshire LA | 2191 | 1574 | 71.8 | 2171 | 1682 | 77.5 | 2342 | 2020 | 86.3 |
| Ceredigion LA | 756 | 595 | 78.7 | 610 | 516 | 84.6 | 647 | 545 | 84.2 |
| Pembrokeshire LA | 1410 | 901 | 63.9 | 1371 | 950 | 69.3 | 1375 | 1090 | 79.3 |
| Health Board Total | 4357 | 3070 | 70.5 | 4152 | 3148 | 75.8 | 4364 | 3655 | 83.8 |
| <u>Powys Teaching HB</u> | | | | | | | | | |
| Health Board Total | 1341 | 1014 | 75.6 | 1383 | 1070 | 77.4 | 1534 | 1243 | 81.0 |
| <u>Swansea Bay University HB</u> | | | | | | | | | |
| Neath Port Talbot LA | 1683 | 1423 | 84.6 | 1699 | 1509 | 88.8 | 1690 | 1530 | 90.5 |
| Swansea LA | 2846 | 2356 | 82.8 | 2792 | 2453 | 87.9 | 2968 | 2628 | 88.5 |
| Health Board Total | 4529 | 3779 | 83.4 | 4491 | 3962 | 88.2 | 4658 | 4158 | 89.3 |
| Unknown | 21 | 11 | 52.4 | 24 | 9 | 37.5 | 40 | 28 | 70.0 |
| Wales Total | 38045 | 25765 | 67.7 | 37410 | 27727 | 74.1 | 38327 | 31623 | 82.5 |

Table 9. Vaccine uptake in children reaching their 15th birthday between 01/09/2023 and 31/08/2024 and resident on 31/03/2024 (with breakdown of MMR1 and MMR2 coverage by sex).

| Area | Resident children | | Teenage 3 in 1 booster ¹ | | | | | | Resident girls | | | | Resident boys | | | | | | | | | | |
|--|-------------------|--------------|-------------------------------------|--------------|-----------------|----------------------------|----------------------|----------------------|----------------------------|---------------------|---------------------|---------------------------|---------------|-------------|--------------|-------------|--------------|--------------|-------------|--------------|-------------|--------------|-------------|
| | (n) | (%) | MMR1 (n) (%) | MMR2 (n) (%) | MenACWY (n) (%) | HPV 1 dose (girls) (n) (%) | MMR1 (girls) (n) (%) | MMR2 (girls) (n) (%) | HPV 1 dose (girls) (n) (%) | MMR1 (boys) (n) (%) | MMR2 (boys) (n) (%) | HPV 1 dose (boys) (n) (%) | | | | | | | | | | | |
| Aneurin Bevan University HB | (n) | (%) | (n) (%) | (n) (%) | (n) (%) | (n) (%) | (n) (%) | (n) (%) | (n) (%) | (n) (%) | (n) (%) | (n) (%) | (n) (%) | (n) (%) | | | | | | | | | |
| Blaenau Gwent LA | 808 | 764 | 94.6 | 741 | 91.7 | 526 | 65.1 | 523 | 64.7 | 379 | 356 | 93.9 | 344 | 90.8 | 275 | 72.6 | 429 | 408 | 95.1 | 397 | 92.5 | 287 | 66.9 |
| Caerphilly LA | 2216 | 2141 | 96.6 | 2079 | 93.8 | 1438 | 64.9 | 1434 | 64.7 | 1078 | 1042 | 96.7 | 1008 | 93.5 | 796 | 73.8 | 1138 | 1099 | 96.6 | 1071 | 94.1 | 750 | 65.9 |
| Monmouthshire LA | 1136 | 999 | 87.9 | 971 | 85.5 | 728 | 64.1 | 723 | 63.6 | 559 | 494 | 88.4 | 479 | 85.7 | 422 | 75.5 | 577 | 505 | 87.5 | 492 | 85.3 | 384 | 66.6 |
| Newport LA | 2197 | 1997 | 90.9 | 1912 | 87.0 | 1260 | 57.4 | 1260 | 57.4 | 1028 | 927 | 90.2 | 890 | 86.6 | 672 | 65.4 | 1168 | 1070 | 91.6 | 1022 | 87.5 | 703 | 60.2 |
| Torfaen LA | 1183 | 1139 | 96.3 | 1097 | 92.7 | 741 | 62.6 | 735 | 62.1 | 551 | 533 | 96.7 | 508 | 92.2 | 416 | 75.5 | 631 | 606 | 96.0 | 589 | 93.3 | 415 | 65.8 |
| Health Board Total | 7540 | 7040 | 93.4 | 6800 | 90.2 | 4693 | 62.2 | 4675 | 62.0 | 3595 | 3352 | 93.2 | 3229 | 89.8 | 2581 | 71.8 | 3943 | 3688 | 93.5 | 3571 | 90.6 | 2539 | 64.4 |
| Betsi Cadwaladr University HB | | | | | | | | | | | | | | | | | | | | | | | |
| Anglesey LA | 822 | 799 | 97.2 | 781 | 95.0 | 501 | 60.9 | 472 | 57.4 | 390 | 383 | 98.2 | 376 | 96.4 | 329 | 84.4 | 432 | 416 | 96.3 | 405 | 93.8 | 325 | 75.2 |
| Conwy LA | 1247 | 1198 | 96.1 | 1175 | 94.2 | 757 | 60.7 | 765 | 61.3 | 616 | 594 | 96.4 | 581 | 94.3 | 474 | 76.9 | 631 | 604 | 95.7 | 594 | 94.1 | 436 | 69.1 |
| Denbighshire LA | 1208 | 1117 | 92.5 | 1100 | 91.1 | 671 | 55.5 | 667 | 55.2 | 605 | 557 | 92.1 | 550 | 90.9 | 402 | 66.4 | 603 | 560 | 92.9 | 550 | 91.2 | 370 | 61.4 |
| Flintshire LA | 1798 | 1698 | 94.4 | 1667 | 92.7 | 1298 | 72.2 | 1298 | 72.2 | 875 | 836 | 95.5 | 821 | 93.8 | 736 | 84.1 | 923 | 862 | 93.4 | 846 | 91.7 | 700 | 75.8 |
| Gwynedd LA | 1331 | 1275 | 95.8 | 1248 | 93.8 | 956 | 71.8 | 959 | 72.1 | 642 | 615 | 95.8 | 602 | 93.8 | 539 | 84.0 | 689 | 660 | 95.8 | 646 | 93.8 | 513 | 74.5 |
| Wrexham LA | 1633 | 1546 | 94.7 | 1518 | 93.0 | 1151 | 70.5 | 1148 | 70.3 | 770 | 725 | 94.2 | 713 | 92.6 | 613 | 79.6 | 863 | 821 | 95.1 | 805 | 93.3 | 649 | 75.2 |
| Health Board Total | 8039 | 7633 | 94.9 | 7489 | 93.2 | 5334 | 66.4 | 5309 | 66.0 | 3898 | 3710 | 95.2 | 3643 | 93.5 | 3093 | 79.3 | 4141 | 3923 | 94.7 | 3846 | 92.9 | 2993 | 72.3 |
| Cardiff and Vale University HB | | | | | | | | | | | | | | | | | | | | | | | |
| Cardiff LA | 4628 | 4329 | 93.5 | 4138 | 89.4 | 3068 | 66.3 | 3064 | 66.2 | 2285 | 2151 | 94.1 | 2045 | 89.5 | 1347 | 58.9 | 2343 | 2178 | 93.0 | 2093 | 89.3 | 1272 | 54.3 |
| Vale of Glamorgan LA | 1687 | 1632 | 96.7 | 1573 | 93.2 | 1176 | 69.7 | 1176 | 69.7 | 816 | 790 | 96.8 | 759 | 93.0 | 606 | 74.3 | 871 | 842 | 96.7 | 814 | 93.5 | 556 | 63.8 |
| Health Board Total | 6315 | 5961 | 94.4 | 5711 | 90.4 | 4244 | 67.2 | 4240 | 67.1 | 3101 | 2941 | 94.8 | 2804 | 90.4 | 1953 | 63.0 | 3214 | 3020 | 94.0 | 2907 | 90.4 | 1828 | 56.9 |
| Cwm Taf Morgannwg University HB | | | | | | | | | | | | | | | | | | | | | | | |
| Bridgend LA | 1694 | 1640 | 96.8 | 1590 | 93.9 | 1295 | 76.4 | 1291 | 76.2 | 771 | 750 | 97.3 | 721 | 93.5 | 672 | 87.2 | 923 | 890 | 96.4 | 869 | 94.1 | 765 | 82.9 |
| Merthyr Tydfil LA | 754 | 719 | 95.4 | 695 | 92.2 | 508 | 67.4 | 507 | 67.2 | 387 | 373 | 96.4 | 359 | 92.8 | 298 | 77.0 | 367 | 346 | 94.3 | 336 | 91.6 | 245 | 66.8 |
| Rhondda Cynon Taf LA | 3018 | 2926 | 97.0 | 2851 | 94.5 | 2240 | 74.2 | 2247 | 74.5 | 1477 | 1430 | 96.8 | 1397 | 94.6 | 1299 | 87.9 | 1541 | 1496 | 97.1 | 1454 | 94.4 | 1272 | 82.5 |
| Health Board Total | 5466 | 5285 | 96.7 | 5136 | 94.0 | 4043 | 74.0 | 4045 | 74.0 | 2635 | 2553 | 96.9 | 2477 | 94.0 | 2269 | 86.1 | 2831 | 2732 | 96.5 | 2659 | 93.9 | 2282 | 80.6 |
| Hywel Dda University HB | | | | | | | | | | | | | | | | | | | | | | | |
| Carmarthenshire LA | 2171 | 2043 | 94.1 | 1989 | 91.6 | 1542 | 71.0 | 1531 | 70.5 | 1083 | 1018 | 94.0 | 992 | 91.6 | 876 | 80.9 | 1088 | 1025 | 94.2 | 997 | 91.6 | 806 | 74.1 |
| Ceredigion LA | 610 | 585 | 95.9 | 570 | 93.4 | 522 | 85.6 | 521 | 85.4 | 305 | 293 | 96.1 | 284 | 93.1 | 267 | 87.5 | 305 | 292 | 95.7 | 286 | 93.8 | 249 | 81.6 |
| Pembrokeshire LA | 1371 | 1282 | 93.5 | 1224 | 89.3 | 939 | 68.5 | 929 | 67.8 | 695 | 658 | 94.7 | 627 | 90.2 | 526 | 75.7 | 676 | 624 | 92.3 | 597 | 88.3 | 424 | 62.7 |
| Health Board Total | 4152 | 3910 | 94.2 | 3783 | 91.1 | 3003 | 72.3 | 2981 | 71.8 | 2083 | 1969 | 94.5 | 1903 | 91.4 | 1669 | 80.1 | 2069 | 1941 | 93.8 | 1880 | 90.9 | 1479 | 71.5 |
| Powys Teaching HB | | | | | | | | | | | | | | | | | | | | | | | |
| Health Board Total | 1383 | 1286 | 93.0 | 1225 | 88.6 | 1036 | 74.9 | 974 | 70.4 | 675 | 626 | 92.7 | 601 | 89.0 | 544 | 80.6 | 707 | 660 | 93.4 | 624 | 88.3 | 526 | 74.4 |
| Swansea Bay University HB | | | | | | | | | | | | | | | | | | | | | | | |
| Neath Port Talbot LA | 1699 | 1661 | 97.8 | 1623 | 95.5 | 1363 | 80.2 | 1361 | 80.1 | 826 | 805 | 97.5 | 787 | 95.3 | 749 | 90.7 | 873 | 856 | 98.1 | 836 | 95.8 | 760 | 87.1 |
| Swansea LA | 2792 | 2666 | 95.5 | 2565 | 91.9 | 2334 | 83.6 | 2342 | 83.9 | 1349 | 1290 | 95.6 | 1232 | 91.3 | 1204 | 89.3 | 1443 | 1376 | 95.4 | 1333 | 92.4 | 1249 | 86.6 |
| Health Board Total | 4491 | 4327 | 96.3 | 4188 | 93.3 | 3697 | 82.3 | 3703 | 82.5 | 2175 | 2095 | 96.3 | 2019 | 92.8 | 1953 | 89.8 | 2316 | 2232 | 96.4 | 2169 | 93.7 | 2009 | 86.7 |
| Unknown | 24 | 15 | 62.5 | 15 | 62.5 | 10 | 41.7 | 10 | 41.7 | 13 | 10 | 76.9 | 10 | 76.9 | 7 | 53.8 | 11 | 5 | 45.5 | 5 | 45.5 | 2 | 18.2 |
| Wales Total | 37410 | 35457 | 94.8 | 34347 | 91.8 | 26060 | 69.7 | 25937 | 69.3 | 18175 | 17256 | 94.9 | 16686 | 91.8 | 14069 | 77.4 | 19232 | 18201 | 94.6 | 17661 | 91.8 | 13658 | 71.0 |

¹ Teenage booster dose of diphtheria, tetanus and polio (diphtheria used as proxy)

Table 10. Vaccine uptake in children reaching their 16th birthday between 01/09/2023 and 31/08/2024 and resident on 31/03/2024 (with breakdown of MMR1 and MMR2 coverage by sex).

| Area | Resident children | | Teenage 3 in 1 booster ¹ | | | | | | Resident girls | | | | Resident boys | | MMR1 (boys) | | MMR2 (boys) | | HPV 1 dose (boys) | | | | |
|--|-------------------|--------------|-------------------------------------|--------------|-------------|--------------|--------------------------|--------------------------|----------------|--------------|--------------|-------------|---------------|-------------|--------------|-------------|--------------|--------------|-------------------|--------------|-------------|--------------|-------------|
| | (n) | (%) | MMR1 (n) | MMR1 (%) | MMR2 (n) | MMR2 (%) | booster ¹ (n) | booster ¹ (%) | MenACWY (n) | MenACWY (%) | (n) | (%) | (n) | (%) | (n) | (%) | (n) | (%) | (n) | (%) | | | |
| Aneurin Bevan University HB | (n) | (%) | (n) | (%) | (n) | (%) | (n) | (%) | (n) | (%) | (n) | (%) | (n) | (%) | (n) | (%) | (n) | (%) | (n) | (%) | | | |
| Blaenau Gwent LA | 866 | 824 | 95.2 | 798 | 92.1 | 616 | 71.1 | 610 | 70.4 | 420 | 393 | 93.6 | 376 | 89.5 | 352 | 83.8 | 446 | 431 | 96.6 | 422 | 94.6 | 353 | 79.1 |
| Caerphilly LA | 2287 | 2223 | 97.2 | 2172 | 95.0 | 1540 | 67.3 | 1541 | 67.4 | 1091 | 1064 | 97.5 | 1041 | 95.4 | 944 | 86.5 | 1196 | 1159 | 96.9 | 1131 | 94.6 | 980 | 81.9 |
| Monmouthshire LA | 1133 | 1024 | 90.4 | 997 | 88.0 | 780 | 68.8 | 788 | 69.5 | 548 | 497 | 90.7 | 482 | 88.0 | 439 | 80.1 | 585 | 527 | 90.1 | 515 | 88.0 | 439 | 75.0 |
| Newport LA | 2306 | 2110 | 91.5 | 2019 | 87.6 | 1380 | 59.8 | 1378 | 59.8 | 1114 | 1022 | 91.7 | 984 | 88.3 | 849 | 76.2 | 1191 | 1087 | 91.3 | 1035 | 86.9 | 814 | 68.3 |
| Torfaen LA | 1161 | 1111 | 95.7 | 1081 | 93.1 | 754 | 64.9 | 788 | 67.9 | 552 | 536 | 97.1 | 521 | 94.4 | 472 | 85.5 | 609 | 575 | 94.4 | 560 | 92.0 | 483 | 79.3 |
| Health Board Total | 7753 | 7292 | 94.1 | 7067 | 91.2 | 5070 | 65.4 | 5105 | 65.8 | 3725 | 3512 | 94.3 | 3404 | 91.4 | 3056 | 82.0 | 4027 | 3779 | 93.8 | 3663 | 91.0 | 3069 | 76.2 |
| Betsi Cadwaladr University HB | | | | | | | | | | | | | | | | | | | | | | | |
| Anglesey LA | 819 | 785 | 95.8 | 772 | 94.3 | 625 | 76.3 | 609 | 74.4 | 414 | 400 | 96.6 | 393 | 94.9 | 368 | 88.9 | 405 | 385 | 95.1 | 379 | 93.6 | 314 | 77.5 |
| Conwy LA | 1271 | 1211 | 95.3 | 1188 | 93.5 | 986 | 77.6 | 986 | 77.6 | 632 | 604 | 95.6 | 595 | 94.1 | 544 | 86.1 | 638 | 607 | 95.1 | 593 | 92.9 | 491 | 77.0 |
| Denbighshire LA | 1257 | 1157 | 92.0 | 1133 | 90.1 | 856 | 68.1 | 861 | 68.5 | 593 | 547 | 92.2 | 540 | 91.1 | 448 | 75.5 | 662 | 610 | 92.1 | 593 | 89.6 | 442 | 66.8 |
| Flintshire LA | 1831 | 1717 | 93.8 | 1667 | 91.0 | 1442 | 78.8 | 1451 | 79.2 | 891 | 827 | 92.8 | 801 | 89.9 | 735 | 82.5 | 940 | 890 | 94.7 | 866 | 92.1 | 772 | 82.1 |
| Gwynedd LA | 1322 | 1273 | 96.3 | 1233 | 93.3 | 1123 | 84.9 | 1116 | 84.4 | 643 | 618 | 96.1 | 596 | 92.7 | 564 | 87.7 | 679 | 655 | 96.5 | 637 | 93.8 | 571 | 84.1 |
| Wrexham LA | 1671 | 1587 | 95.0 | 1558 | 93.2 | 1320 | 79.0 | 1322 | 79.1 | 809 | 781 | 96.5 | 769 | 95.1 | 720 | 89.0 | 861 | 805 | 93.5 | 788 | 91.5 | 696 | 80.8 |
| Health Board Total | 8171 | 7730 | 94.6 | 7551 | 92.4 | 6352 | 77.7 | 6345 | 77.7 | 3982 | 3777 | 94.9 | 3694 | 92.8 | 3379 | 84.9 | 4185 | 3952 | 94.4 | 3856 | 92.1 | 3286 | 78.5 |
| Cardiff and Vale University HB | | | | | | | | | | | | | | | | | | | | | | | |
| Cardiff LA | 4613 | 4285 | 92.9 | 4071 | 88.3 | 3275 | 71.0 | 3281 | 71.1 | 2270 | 2123 | 93.5 | 2015 | 88.8 | 1801 | 79.3 | 2343 | 2162 | 92.3 | 2056 | 87.8 | 1695 | 72.3 |
| Vale of Glamorgan LA | 1722 | 1662 | 96.5 | 1609 | 93.4 | 1346 | 78.2 | 1349 | 78.3 | 835 | 806 | 96.5 | 782 | 93.7 | 709 | 84.9 | 887 | 856 | 96.5 | 827 | 93.2 | 698 | 78.7 |
| Health Board Total | 6335 | 5947 | 93.9 | 5680 | 89.7 | 4621 | 72.9 | 4630 | 73.1 | 3105 | 2929 | 94.3 | 2797 | 90.1 | 2510 | 80.8 | 3230 | 3018 | 93.4 | 2883 | 89.3 | 2393 | 74.1 |
| Cwm Taf Morgannwg University HB | | | | | | | | | | | | | | | | | | | | | | | |
| Bridgend LA | 1716 | 1665 | 97.0 | 1611 | 93.9 | 1450 | 84.5 | 1449 | 84.4 | 830 | 807 | 97.2 | 787 | 94.8 | 766 | 92.3 | 886 | 858 | 96.8 | 824 | 93.0 | 783 | 88.4 |
| Merthyr Tydfil LA | 783 | 753 | 96.2 | 730 | 93.2 | 597 | 76.2 | 594 | 75.9 | 383 | 368 | 96.1 | 353 | 92.2 | 341 | 89.0 | 399 | 385 | 96.5 | 377 | 94.5 | 333 | 83.5 |
| Rhondda Cynon Taf LA | 2973 | 2873 | 96.6 | 2805 | 94.3 | 2375 | 79.9 | 2375 | 79.9 | 1455 | 1409 | 96.8 | 1378 | 94.7 | 1304 | 89.6 | 1514 | 1460 | 96.4 | 1425 | 94.1 | 1316 | 86.9 |
| Health Board Total | 5472 | 5291 | 96.7 | 5146 | 94.0 | 4422 | 80.8 | 4418 | 80.7 | 2668 | 2584 | 96.9 | 2518 | 94.4 | 2411 | 90.4 | 2799 | 2703 | 96.6 | 2626 | 93.8 | 2432 | 86.9 |
| Hywel Dda University HB | | | | | | | | | | | | | | | | | | | | | | | |
| Cardiff LA | 2342 | 2205 | 94.2 | 2133 | 91.1 | 1855 | 79.2 | 1848 | 78.9 | 1158 | 1090 | 94.1 | 1053 | 90.9 | 1028 | 88.8 | 1184 | 1115 | 94.2 | 1080 | 91.2 | 992 | 83.8 |
| Ceredigion LA | 647 | 612 | 94.6 | 588 | 90.9 | 559 | 86.4 | 559 | 86.4 | 315 | 300 | 95.2 | 287 | 91.1 | 280 | 88.9 | 332 | 312 | 94.0 | 301 | 90.7 | 265 | 79.8 |
| Pembrokeshire LA | 1375 | 1271 | 92.4 | 1203 | 87.5 | 898 | 65.3 | 889 | 64.7 | 684 | 641 | 93.7 | 619 | 90.5 | 569 | 83.2 | 691 | 630 | 91.2 | 584 | 84.5 | 521 | 75.4 |
| Health Board Total | 4364 | 4088 | 93.7 | 3924 | 89.9 | 3312 | 75.9 | 3296 | 75.5 | 2157 | 2031 | 94.2 | 1959 | 90.8 | 1877 | 87.0 | 2207 | 2057 | 93.2 | 1965 | 89.0 | 1778 | 80.6 |
| Powys Teaching HB | | | | | | | | | | | | | | | | | | | | | | | |
| Health Board Total | 1534 | 1437 | 93.7 | 1383 | 90.2 | 1205 | 78.6 | 1210 | 78.9 | 710 | 665 | 93.7 | 644 | 90.7 | 597 | 84.1 | 823 | 772 | 93.8 | 739 | 89.8 | 646 | 78.5 |
| Swansea Bay University HB | | | | | | | | | | | | | | | | | | | | | | | |
| Neath Port Talbot LA | 1690 | 1646 | 97.4 | 1599 | 94.6 | 1453 | 86.0 | 1456 | 86.2 | 796 | 773 | 97.1 | 751 | 94.3 | 723 | 90.8 | 894 | 873 | 97.7 | 848 | 94.9 | 807 | 90.3 |
| Swansea LA | 2968 | 2815 | 94.8 | 2714 | 91.4 | 2555 | 86.1 | 2571 | 86.6 | 1475 | 1408 | 95.5 | 1365 | 92.5 | 1328 | 90.0 | 1493 | 1407 | 94.2 | 1349 | 90.4 | 1300 | 87.1 |
| Health Board Total | 4658 | 4461 | 95.8 | 4313 | 92.6 | 4008 | 86.0 | 4027 | 86.5 | 2271 | 2181 | 96.0 | 2116 | 93.2 | 2051 | 90.3 | 2387 | 2280 | 95.5 | 2197 | 92.0 | 2107 | 88.3 |
| Unknown | 40 | 33 | 82.5 | 33 | 82.5 | 23 | 57.5 | 24 | 60.0 | 19 | 17 | 89.5 | 17 | 89.5 | 13 | 68.4 | 21 | 16 | 76.2 | 16 | 76.2 | 15 | 71.4 |
| Wales Total | 38327 | 36279 | 94.7 | 35097 | 91.6 | 29013 | 75.7 | 29055 | 75.8 | 18637 | 17696 | 95.0 | 17149 | 92.0 | 15894 | 85.3 | 19679 | 18577 | 94.4 | 17945 | 91.2 | 15726 | 79.9 |

¹ Teenage booster dose of diphtheria, tetanus and polio (diphtheria used as proxy).

Table 11. Uptake of hepatitis B immunisation in children born to hepatitis B positive mothers reaching their 1st, 2nd and 5th birthdays during 01/04/2023 and 31/03/2024 and resident on 31/03/2024.¹

| Area | 1yr | | | | | 2yrs | | | | | | 5yrs | | | | | |
|------------------------------------|-------------------|---------------------------------------|--------------|-------------|-------------|-------------------|---------------------------------------|--------------|--------------|--------------|-------------|-------------------|---------------------------------------|--------------|--------------|--------------|--------------|
| | Resident children | Babies at risk of perinatal infection | 1 dose | 2 doses | 3 doses | Resident children | Babies at risk of perinatal infection | 1 dose | 2 doses | 3 doses | 4 doses | Resident children | Babies at risk of perinatal infection | 1 dose | 2 dose | 3 doses | 4 doses |
| | (n) | (n) | (%) | (%) | (%) | (n) | (n) | (%) | (%) | (%) | (%) | (n) | (n) | (%) | (%) | (%) | (%) |
| Aneurin Bevan | 5953 | 3 | 100.0 | 100.0 | 100.0 | 6217 | 3 | 100.0 | 100.0 | 100.0 | 100.0 | 6648 | 3 | 100.0 | 100.0 | 100.0 | 100.0 |
| Betsi Cadwalladr University | 5912 | 3 | 100.0 | 100.0 | 100.0 | 6353 | 3 | 100.0 | 100.0 | 100.0 | 100.0 | 6800 | 6 | 100.0 | 100.0 | 100.0 | 100.0 |
| Cardiff and Vale University | 4723 | 11 | 100.0 | 54.5 | 36.4 | 5207 | 4 | 100.0 | 100.0 | 100.0 | 50.0 | 5649 | 9 | 100.0 | 100.0 | 100.0 | 100.0 |
| Cwm Taf Morgannwg | 4175 | 0 | 0.0 | 0.0 | 0.0 | 4424 | 0 | 0.0 | 0.0 | 0.0 | 0.0 | 4896 | 2 | 100.0 | 100.0 | 100.0 | 100.0 |
| Hywel Dda | 3091 | 0 | 0.0 | 0.0 | 0.0 | 3256 | 2 | 100.0 | 100.0 | 100.0 | 100.0 | 3648 | 0 | 0.0 | 0.0 | 0.0 | 0.0 |
| Powys Teaching | 943 | 0 | 0.0 | 0.0 | 0.0 | 1102 | 0 | 0.0 | 0.0 | 0.0 | 0.0 | 1253 | 1 | 100.0 | 100.0 | 100.0 | 100.0 |
| Swansea Bay University | 3324 | 6 | 100.0 | 100.0 | 100.0 | 3587 | 5 | 100.0 | 100.0 | 100.0 | 100.0 | 3988 | 4 | 100.0 | 100.0 | 100.0 | 100.0 |
| Unknown | 3 | 0 | 0.0 | 0.0 | 0.0 | 11 | 0 | 0.0 | 0.0 | 0.0 | 0.0 | 11 | 1 | 100.0 | 100.0 | 100.0 | 100.0 |
| Wales | 28124 | 23 | 100.0 | 78.3 | 69.6 | 30157 | 17 | 100.0 | 100.0 | 100.0 | 88.2 | 32893 | 26 | 100.0 | 100.0 | 100.0 | 100.0 |

¹Data reflects immunisations given and recorded on the Public Health Wales All Wales Neonatal Hepatitis B database of babies born to hepatitis B positive mothers.

Links

Public Health Wales Vaccination and Immunisation intranet (NHS Wales only):
https://nhswales365.sharepoint.com/sites/PHW_VPDPCComms

Public Health Wales internet:
<https://phw.nhs.wales/>

Report Team

Report prepared by Public Health Wales Vaccine Preventable Disease Programme (VPDP) and Communicable Disease Surveillance Centre (CDSC), in collaboration with Digital Health and Care Wales (DHCW).

Comment and queries relating to this report should be addressed to Public Health Wales VPDP:
Email: surveillance.requests@wales.nhs.uk

Acknowledgments

Immunisation data for this report is provided by Health Board Child Health Administration Offices, via the Children and Young Persons Integrated System (CYPrIS). The authors would like to thank Child Health Office Administration Managers and Immunisation Coordinators for their continuing advice and support in the COVER scheme.

Suggested citation

Public Health Wales Vaccine Preventable Disease Programme. Vaccine uptake in children in Wales; COVER Annual report 2024, July 2024. Cardiff: Public Health Wales.