



**GIG**  
CYMRU  
**NHS**  
WALES

Iechyd Cyhoeddus  
Cymru  
Public Health  
Wales

## Public Health Wales Microbiology Division

Guidance for Clinicians collecting , transporting and waste management of a HCID respiratory virus 2019-nCoV specimen(s) in the community

**Document and Version:** MDHSGUID 025.7

**Author(s)** Julie Woolls  
Robin Howe

**Authorised by:** D Heyburn

**Date authorised:** 7 February 2020

**Publication/ Distribution:**

- NHS Wales (Intranet)

**Review Date:** 10 February 2022

**Purpose and Summary of Document:**

Guidance for Clinicians collecting , transporting and waste management of a HCID respiratory virus 2019-nCoV specimen(s) in the community

**Document amendments**

Document amendments by completing the following table.

Date	Section No	Page No	Version No	Description
30/01/20	All	All	2	Updated version
31/01/20	All	All	3	Grammar / Spelling
31/01/20	5 and 7	7 and 8	4	Added contact details for Health Courier Services Removed section 5.1 Communication leads
31/01/20	6	7	5	Clarity for Chlorine disinfectant. Removal of reference to Apron
31/01/20	8	10	6	Additional details
03/02/20	3 ,4	5,6	7	Update links to PHE
03/02/20	13	16	7	Change to category B waste
03/02/20	13	17	7	Change to category B waste bi sticker
03/02/20	2	4	8	Guidance on assessment of suitability for home testing
04/02/20	12	15	9	Added 'Perform hand hygiene' after removing gloves whilst Doffing
07/02/20	6	10	10	Streamlining sampling requirements

## Contents

<b>1</b>	<b>INTRODUCTION .....</b>	<b>4</b>
<b>2</b>	<b>SCOPE.....</b>	<b>4</b>
<b>3</b>	<b>CROSS REFERENCES: .....</b>	<b>5</b>
<b>4</b>	<b>PERFORMING A RISK ASSESSMENT OF THE PATIENT .....</b>	<b>5</b>
<b>5</b>	<b>COMMUNICATION .....</b>	<b>7</b>
<b>6</b>	<b>COMMUNITY TESTING REQUIREMENTS.....</b>	<b>8</b>
6.1	Personnel .....	8
6.2	Equipment .....	8
6.2.1	<b>PPE .....</b>	<b>8</b>
6.2.2	<b>Disinfectant .....</b>	<b>8</b>
6.2.3	<b>Waste management supplies .....</b>	<b>8</b>
6.2.4	<b>Sampling Kit.....</b>	<b>9</b>
6.2.5	<b>Packaging Kit.....</b>	<b>9</b>
<b>7</b>	<b>NOTIFY HEALTH COURIER SERVICE.....</b>	<b>9</b>
<b>8</b>	<b>DONNING OF PPE .....</b>	<b>9</b>
<b>9</b>	<b>SCREENING THE PATIENT.....</b>	<b>11</b>
<b>10</b>	<b>SAMPLE COLLECTION.....</b>	<b>11</b>
<b>11</b>	<b>PACKAGING OF ENHANCED CATEGORY B SPECIMENS.....</b>	<b>12</b>
<b>12</b>	<b>DISINFECTION POST COLLECTION OF SPECIMENS .....</b>	<b>13</b>
<b>13</b>	<b>REMOVAL (DOFFING) OF PPE .....</b>	<b>13</b>
<b>14</b>	<b>COLLECTION AND DISPOSAL OF WASTE .....</b>	<b>16</b>

## 1 Introduction

The routes of transmission of 2019-nCoV have not been fully determined; however, other coronaviruses are mainly transmitted by large respiratory droplets and direct or indirect contact with infected secretions. In addition to respiratory secretions, other coronaviruses have been detected in blood, faeces and urine.

Clinicians, Consultant Microbiologists and the Laboratory Emergency response team members may be required to attend a suspected case of 2019-nCoV in a community setting for initial assessment and sampling.

## 2 Scope

This guidance is intended for use by clinicians and the laboratory Emergency response team members in the context of suspected cases associated with a 2019-nCoV outbreak occurring outside the UK.

This will inform and instruct staff of the actions to take when assessing and collecting specimens from a suspected case of 2019-nCoV infection in the community.

Patients will be assessed for home testing based on their clinical severity and ability to self-isolate at home (<https://www.gov.uk/government/publications/wuhan-novel-coronavirus-self-isolation-for-patients-undergoing-testing/guidance-for-nhs-clinicians-on-home-isolation-of-a-patient-while-being-tested-for-wuhan-novel-coronavirus> ). If there is any concern at triage regarding the state of the patient, they should be transported to hospital for testing.

Risk assessments for the micro-organisms, sample types and chemicals that are stored, used and transported in each department are readily available to staff and are held in each laboratory. Advice is available from the Operational Manager/Safety Lead. Information about disinfection and cleaning can be found in *Public Health Wales Disinfection and Spillage Policy*. General aspects on all laboratory health and safety issues can be found in:

**MDHS 005 Generic Health and Safety Guidance Microbiology Division**

**MDHSGUID 011 Guidance on Transportation and Packaging of Enhanced Category B Specimens**

## ***MDHS 021.2 Procedure for the segregation and decontamination of clinical waste***

And other associated documents found on QMS

### **3 Cross References:**

PHE -Wuhan novel coronavirus guidance:

<http://www.nipcm.scot.nhs.uk/appendices/appendix-6-best-practice-putting-on-and-removing-ppe/>

<https://www.gov.uk/government/publications/wuhan-novel-coronavirus-background-information>

<https://www.gov.uk/government/publications/wuhan-novel-coronavirus-initial-investigation-of-possible-cases/investigation-and-initial-clinical-management-of-possible-cases-of-wuhan-novel-coronavirus-wn-cov-infection>

[https://assets.publishing.service.gov.uk/government/uploads/system/uploads/attachment\\_data/file/862585/2019-nCoV\\_Flow\\_Chart\\_31-Jan-2020.pdf](https://assets.publishing.service.gov.uk/government/uploads/system/uploads/attachment_data/file/862585/2019-nCoV_Flow_Chart_31-Jan-2020.pdf)

<https://www.gov.uk/government/publications/wuhan-novel-coronavirus-infection-prevention-and-control>

<https://www.gov.uk/government/publications/wn-cov-guidance-for-primary-care>

<https://www.gov.uk/government/publications/wuhan-novel-coronavirus-guidance-for-clinical-diagnostic-laboratories>

<https://www.gov.uk/government/publications/testing-for-wuhan-novel-cov-2019-ncov>

### **4 Performing a risk assessment of the patient**

The PHE guidance requires a risk assessment to be undertaken.

If the patient satisfies epidemiological and clinical criteria, they are classified as a possible case.

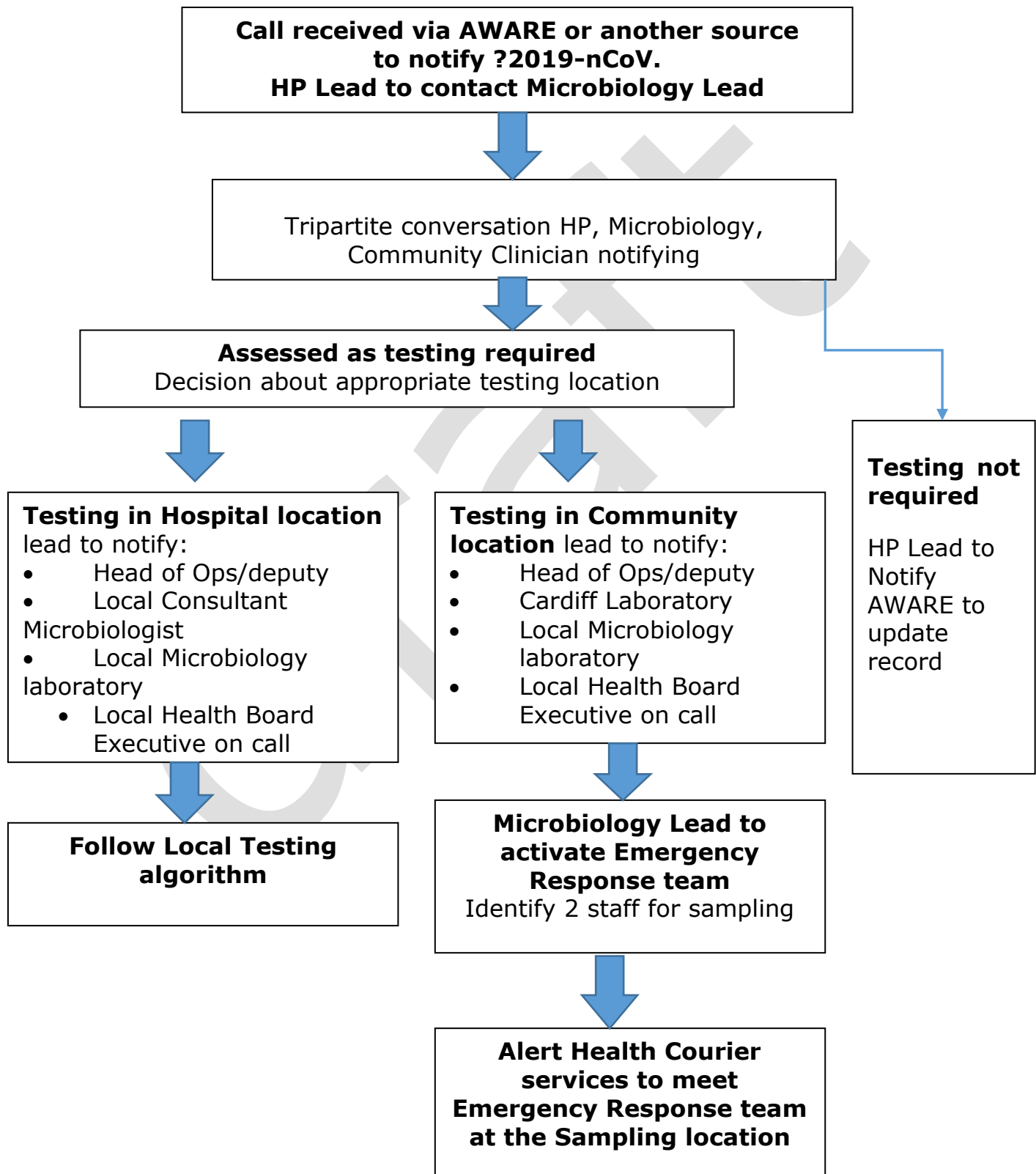
<https://www.gov.uk/government/publications/wuhan-novel-coronavirus-initial-investigation-of-possible-cases/investigation-and-initial-clinical>

[management-of-possible-cases-of-wuhan-novel-coronavirus-wn-cov-infection](#)

[https://assets.publishing.service.gov.uk/government/uploads/system/uploads/attachment\\_data/file/862585/2019-nCoV\\_Flow\\_Chart\\_31-Jan-2020.pdf](https://assets.publishing.service.gov.uk/government/uploads/system/uploads/attachment_data/file/862585/2019-nCoV_Flow_Chart_31-Jan-2020.pdf)

draft

## 5 Communication



## 6 Community testing requirements

### 6.1 Personnel

- A minimum of 2 staff to deliver community sampling.
- Trained in the use of PPE required for coronavirus contact, including donning and doffing.
- Fit-tested for FFP3 masks available
- Trained in sampling requirements
- Trained in sample packaging requirements
- Trained in waste management requirements

### 6.2 Equipment

Community Response Grab bag (available from the Cardiff Virology to include:

#### 6.2.1 PPE

- FFP3 masks (x4)
- Single use disposable gloves with long tight-fitting cuffs (x8 pairs)
- Gowns - disposable fluid-resistant full-sleeve gowns (x4)
- Single-use disposable face visor (x4)

#### 6.2.2 Disinfectant

- Alcohol Hand rub
- Chlorine based disinfectant – Environmental disinfection 1000 parts per million available chlorine (Haz tabs, water and container provided and to be made up on site)
- Roll of white paper or disposable cleaning cloths to for disinfecting packaging and grab bag
- 1 litre sealed bottle of water for diluting haz tabs on scene
- Blood spillage- 10,000 parts per million available chlorine (Haz Tabs)

#### 6.2.3 Waste management supplies

- 1 Litre sharps box – yellow top for blood collection waste, consumables etc
- 4 Litre sharps box – for the collection of PPE
- Yellow clinical waste bags
- Indelible marker to label waste container with date/location/sealed by



### 6.2.4 Sampling Kit

- Samples (note some redundancy in case of issues)
  - Red top throat swab (x3)

### 6.2.5 Packaging Kit

- Microbiology request form (x2)
- Biohazard sample bag (Clear) (x4)
- Cat B transport bag (x2)
- Transport box (i.e. Lockable tool box) (x1)

## 7 Notify Health Courier Service

Alert Health Courier Services to meet Emergency Response team at the Sampling location.

Contact the On-call Manager 24/7, 365 days a year on **0330 123 2369**.

They will need address, contact details and time you will need them by.

## 8 Donning of PPE

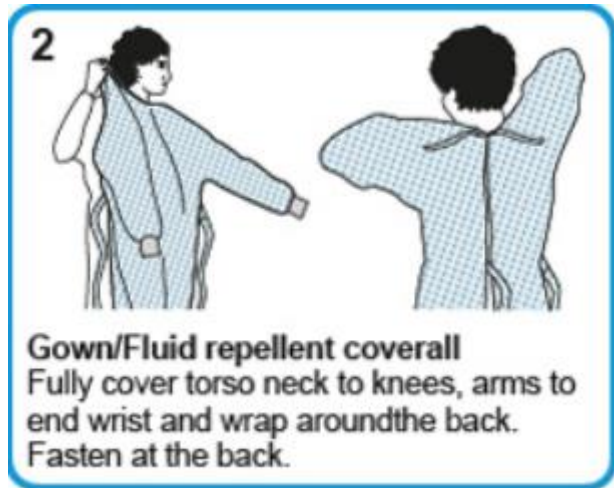
On arrival at the property, identify an area for donning and doffing PPE and packaging of samples. Ideally this should be an area away from the patient and near the property entrance

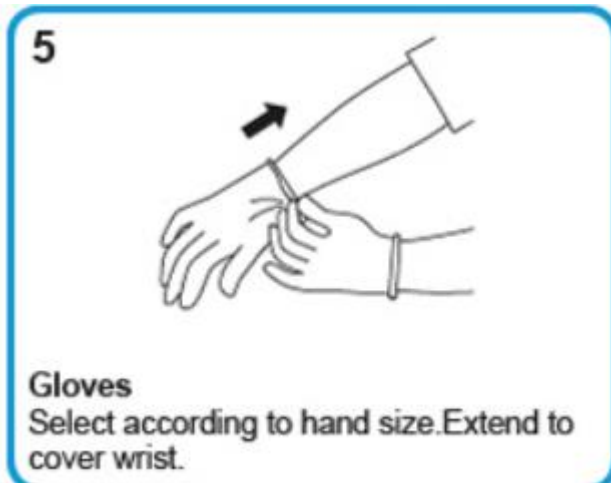
‘Ideally this should be an area away from the patient (at least 2metres away) Near the property entrance (e.g. entrance hall or porch).’

### **Trying not to draw attention from neighbouring properties**

**Perform hand hygiene before putting on PPE. The order for putting on PPE is:**

- Gown - long sleeved fluid repellent disposable gown
- FFP3 Mask – NOTE this must be the mask that you have been fit tested to use. Ensure fit snug to face and fit check,
- Eye Protection visor or goggles
- Gloves – Ensure cuff of gown covered.





## 9 Screening the Patient

Screening staff should document that the patient (or confirm with parent when relating to a child patient):

- Feels well-enough to stay at home and self-care
- Understands and is able to self-isolate
- Safety netting advice is given and understood

Screening staff should give safety-netting advice:

- If the patient (or parent) feels worse or is concerned and they feel they need further healthcare advice, ring NHS 111
- In an emergency, ring the Ambulance service on 999

## 10 Sample collection

For possible cases, the following samples are required.

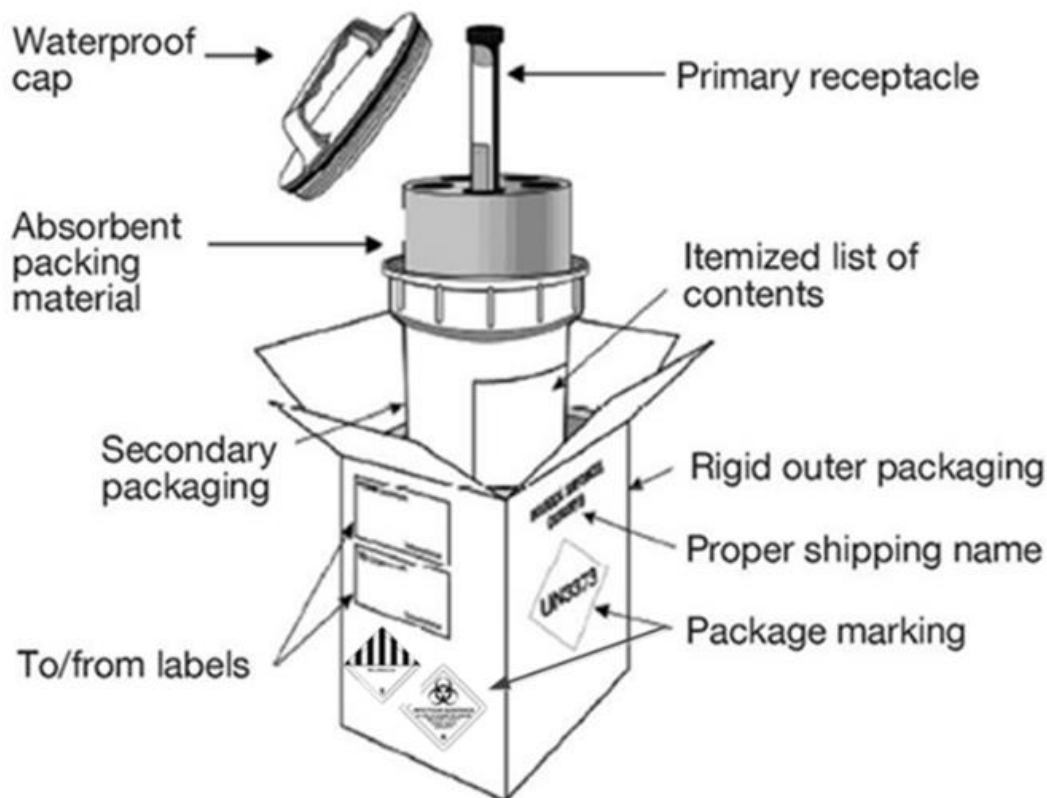
### Samples required for tests for 2019 nCoV



**Two dry red topped throat swabs**

**All samples** should be placed in individual specimen bags transported as Enhanced Cat B to Cardiff Virology Laboratory at UHW

## 11 Packaging of Enhanced Category B Specimens



**Step 1:** Primary Specimen. - Enhanced Category B infectious specimen/ swab

**Step 2:** Place the primary receptacle in the bubble wrap pouch. The absorbent sheet must be placed between the bubble wrap pouch and the primary receptacles(s).

**Step 3:** Seal the bubble wrap pouch (or plastic specimen bag) containing specimen into secondary container (DX rigid container or similar)

**This secondary container is then surface decontaminated with disinfectant**

**Step 4:** Place this container into a cardboard transport box and specimen request forms

Label box with:

- Consignee address labels
- The laboratory 24 hour emergency number

**Step 5:** Place cardboard box inside final transport box supplied by Health Care Couriers

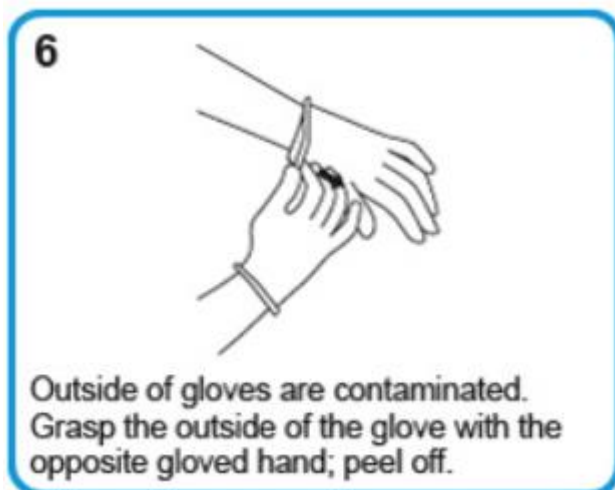
## 12 Disinfection post collection of specimens

Disinfect all surfaces if contaminated with 1000 parts per million available chlorine (Haz tabs)

## 13 Removal (Doffing) of PPE

The order for removing PPE is:

1. Gloves,
2. Gown,
3. Eye Protection,
4. FFP3 mask – The mask should be removed when you have moved to a separate area from the patient in preparation to complete exit from the property.



7



Hold the removed glove in the gloved hand. Slide the fingers of the ungloved hand under the remained glove at the wrist. Peel the second glove off over the first glove. Discard into an appropriate lined waste bin.

### Perform hand hygiene

9



**Gown/Fluid repellent coverall**  
Gown/Fluid repellent coverall front and sleeves are contaminated. Unfasten neck, then waist ties.

10



Remove using a peeling motion; pull gown/fluid repellent coverall from each shoulder towards the same hand.

11



Gown/fluid repellent coverall will turn inside out. Hold removed gown/fluid repellent coverall away from body, roll into a bundle and discard into an appropriate lined waste bin or linen receptacle.

12

**Eye Protection (Goggles/face shield)**

Outside of goggles or face shield are contaminated. Handle only by the headband or the sides. Discard into a lined waste bin or place into a receptacle for reprocessing/ decontamination.

13

**Surgical Mask (or respiratory)**

Front of mask/respirator is contaminated - do not touch. Unfasten the ties - first the bottom, then the top. Pull away from the face without touching front of mask/respirator. Discard disposable items into an appropriate lined waste bin. For reusable respirator place in designated receptacle for processing/ decontamination.

**Perform hand hygiene immediately on removal.**

## 14 Collection and Disposal of Waste

All PPE to be placed in the 4 litre yellow hard sided bin with yellow top and sealed.

All needles, syringes and alcohol wipes to be placed in a 1 litre sharps container with yellow top and sealed. These Bins are wiped over with the disinfectant (1,000 ppm) and are then placed in a yellow bag and tagged.

The Health Couriers on arrival will deliver a labelled 60 litre container of which the waste is transferred into and this will be sealed. This will display the signage Category B Waste, UN-3373

### CATEGORY B



**CLINICAL WASTE**



**DO NOT MOVE**

This container will then be transported along with the specimen collection to Cardiff Microbiology where the BMS receiving the specimens will store in the orange bin. This will then be collected as Category B waste for heat treatment the next working day.