

# Vaccine Uptake in Children in Wales April to June 2024

COVER 151: Wales September 2024



## Key points

- For children at one year of age, uptake of the “6 in 1” vaccine and two doses of MenB was below 95%. Uptake of primary pneumococcal conjugate vaccination (PCV) was 95.7%. Uptake of two doses of rotavirus vaccine was 92.1%.
- Uptake of a complete three-dose course of MenB vaccine in two-year-olds was 92.8% this quarter.
- Uptake of the first dose of MMR vaccine in two-year-old children was 93.5% this quarter. Uptake of the second dose in four-year-old children was 87.0%.
- The proportion of children up to date with all routine immunisations by four years of age was 85.7% this quarter and was 87.7% in five-year-olds.
- School-based vaccination sessions for teenagers are continuing for the 2023-24 academic year. From September 2023 the HPV vaccination programme changed from a two dose to a one-dose-only schedule. Uptake of one dose of HPV vaccine in 2023-24 school year 8 children was 69.4% to date.
- Coverage of one dose of HPV vaccine in 2023-24 school year 9 (13–14-year-olds) was 71.9%. Coverage of one dose of HPV vaccine in 2023-24 school year 10 (14–15-year-olds) was 75.4%.
- Uptake of routine MenACWY vaccine in the 2023-24 school year 9 cohort was 70.8% to date. Coverage of the MenACWY vaccine in the 2023-24 school year 10 cohort was 71.0%.
- Uptake of the Td/IPV teenage booster in the 2023-24 school year 9 cohort was 70.9% to date. Coverage of the Td/IPV teenage booster in the 2023-24 school year 10 was 71.3%.
- Coverage of one dose of MMR vaccine in the 2023-24 school year 10 (age 14-15 years) was 95.7%, coverage of two doses was 93.1%.
- Coverage of one dose of MMR vaccine in the 2023-24 school year 11 (age 15-16 years) was 95.7%, coverage of two doses is 93.0%.

## Background

These results are for children living in Wales in June 2024 and reaching their first, second, fourth, fifth and 16<sup>th</sup> birthdays during the quarter 01/04/2024 to 30/06/2024. Uptake of key immunisations in older children, which are mainly provided through school-based programmes in all areas other than Cardiff and Vale University Health Board, are presented in school year cohorts (children reaching their 14<sup>th</sup>, 15<sup>th</sup> and 16<sup>th</sup> birthdays between 01/09/2023 and 31/08/2024). BCG immunisation uptake data are also presented here for children vaccinated selectively following risk assessment. Coverage of neonatal hepatitis B immunisation in infants at risk is also presented, using data from the Public Health Wales Tarian case and incident management system following a move from the Public Health Wales Neonatal Hepatitis B database.

**As part of ongoing data quality assurance, an improvement in the algorithm used to produce the dataset that the Vaccine Preventable Disease Programme routinely use for COVER reports has been made by Digital Health and Care Wales. This has led to increased completeness of vaccination data and uptake figures; primarily in children aged four years and older. National trends in this report for 2020 quarter 1 to 2024 quarter 1 are updated to take these changes into account.**

## Findings

1. Uptake of all three doses of the combined “6 in 1” DTaP/IPV/Hib/HepB<sup>1</sup> vaccine, scheduled at two, three and four months of age, in children reaching their first birthday was 94.1% this quarter, compared to 94.3% last quarter. Uptake ranged by HB from 93.3% (Powys) to 95.3% (Cwm Taf Morgannwg) and by LA from 89.1% (Conwy) to 98.3% (Anglesey). One of the seven HBs and ten of the 22 LA areas achieved the target 95% uptake (Figures 2, 3 and 6, Tables 2 and 3).
2. Uptake of primary pneumococcal conjugate vaccination (PCV) in children reaching their first birthday decreased slightly to 95.7% this quarter, compared to 96.1% last quarter. Uptake ranged by LA from 94.2% (Powys) to 96.6% (Cwm Taf Morgannwg). Six of the seven HBs and 17 of the 22 LA areas achieved the target 95% uptake (Figures 2 and 3, Tables 2 and 3).
3. Uptake of two doses of MenB vaccine, scheduled at two and four months of age, in children reaching their first birthday was 93.7% this quarter. Uptake in HBs ranged from 93.0% (Cardiff and Vale) to 94.8% (Cwm Taf Morgannwg) and ranged by LA from 90.2% (Conwy) to 97.4% (Anglesey) (Figure 3, Tables 2 and 3).
4. Uptake of two doses of rotavirus vaccine in children reaching their first birthday remained stable at 92.1%. Uptake in HBs ranged from 90.7% (Cardiff and Vale) to 94.3% (Hywel Dda) and ranged by LA from 86.5% (Wrexham) to 97.4% (Anglesey) (Figures 2 and 3, Tables 2 and 3).
5. Uptake of the first dose of MMR<sup>2</sup> in children reaching their second birthday (scheduled at 12 to 13 months of age) was 93.5% this quarter. Uptake ranged by HB from 91.4% (Cardiff and Vale) to 95.0% (Cwm Taf Morgannwg) and by LA area from 89.1% (Neath Port Talbot) to 96.9% (Anglesey and Ceredigion). One HB and nine LA areas achieved the target of 95% uptake (Figures 2, 3 and 7, Tables 2 and 4).
6. Uptake of the complete three dose course of MenB vaccine in children reaching their second birthday remained stable at 92.8%. Uptake ranged by HB from 89.7% (Cardiff and Vale) to 95.0% (Cwm Taf Morgannwg) and by LA from 88.5% (Neath Port Talbot) to 97.7% (Anglesey). One of the seven HBs and eight of the 22 LA areas achieved the target 95% uptake (Figures 2 and 3, Tables 2 and 4).
7. Uptake of the final dose of Pneumococcal Conjugate Vaccine (PCVf), scheduled at 12 to 13 months of age) in children reaching their second birthday was 93.2%. Uptake ranged by HB from 90.7% (Cardiff and Vale) to 95.0% (Cwm Taf Morgannwg) and ranged by LA from 89.1% (Neath Port Talbot) to 97.7% (Anglesey). One HB and nine LA areas achieved an uptake of 95% or over (Figure 3, Tables 2 and 4).
8. Uptake of the Hib/MenC booster (given at 12 to 13 months of age) in children reaching two years of age remained stable at 92.8% this quarter. Uptake ranged by HB from 90.6% (Cardiff and Vale) to 94.6% (Cwm Taf Morgannwg) and ranged by LA from 88.5% (Neath Port Talbot) to 96.9% (Anglesey and Ceredigion). No HBs achieved the target uptake. However, six LA areas achieved uptakes in excess of 95% (Figures 1, 2 and 3, Tables 2 and 4).
9. In children reaching four years of age this quarter (Table 5), uptake of:
  - The “4 in 1” DTaP/IPV<sup>3</sup> pre-school booster was 87.1%
  - The Hib/MenC booster was 93.9%
  - Two doses of MMR was 87.0%

The proportion of children who were up to date with all these routine immunisations at four years of age was 85.7%. This ranged by HB from 83.6% (Aneurin Bevan and Cardiff and Vale)

---

<sup>1</sup> DTaP/IPV/Hib/HepB vaccine protects against Diphtheria, Tetanus, Pertussis (Whooping Cough), Polio, Hib and Hep B infection.

<sup>2</sup> MMR protects against measles, mumps and rubella infections.

<sup>3</sup> DTaP/IPV (and dTaP/IPV) vaccines boost protection against Diphtheria, Tetanus, Pertussis and Polio infection before school entry.

to 90.5% (Powys) and by LA from 77.7% (Newport) to 94.2% (Anglesey) (Figures 4 and 5, Tables 1, 2 and 5).

10. The proportion of children who were up to date with routine immunisations by their fifth birthday was 87.7%, compared to 88.4% last quarter. This ranged by HB from 84.9% (Hywel Dda) to 91.1% (Powys Teaching) (Table 6).
11. In children reaching five years of age this quarter, coverage of one dose of MMR was 95.6%. Coverage of two doses of MMR was 89.6%. Coverage of two doses of MMR ranged by HB from 86.4% (Hywel Dda) to 92.3% (Cwm Taf Morgannwg) and by LA from 84.0% (Carmarthenshire) to 97.1% (Anglesey) (Figures 1, 2, 3 and 8, Tables 2, 6 and 7).
12. Uptake of the “4 in 1” DTaP/IPV<sup>3</sup> pre-school booster in children reaching their fifth birthday decreased slightly to 89.4% this quarter compared to 90.0% last quarter, ranging by HB from 86.1% (Hywel Dda) to 91.9% (Cwm Taf Morgannwg) and by LA from 83.1% (Carmarthenshire) to 95.7% (Anglesey). None of the HBs and only one LA achieved the 95% uptake target (Figure 3 and 9, Tables 2, 6 and 7).
13. From September 2023 the HPV vaccination programme changed from a two dose to a one-dose-only schedule following a Joint Committee on Vaccination and Immunisation (JCVI) recommendation. From September, immunocompetent adolescents who have received one dose of HPV vaccine will be considered fully vaccinated against HPV [1]. Uptake of one dose of HPV vaccine for children in the 2023-24 school year 8 cohort (turning 13 years of age during 01/09/23 to 31/08/24) was 69.4% (Table 8a).
14. Coverage of one dose of HPV vaccine in the 2023-24 school year 9 cohort was 71.9% (75.2% in girls and 68.8% in boys) (Table 8b).
15. Coverage of one dose of HPV vaccine in the 2023-24 school year 10 cohort (reaching their 15<sup>th</sup> birthday during 01/09/23 to 31/08/24) was 75.4% (78.6% in girls and 72.4% in boys) (Table 8c and Table 9).
16. Uptake of the MenACWY vaccine in the 2023-24 routine school year 9 cohort was 70.8% (Table 10 and 11). Coverage in the 2023-24 school years 10, 11 and 12, was 71.0%, 76.5% and 82.7% respectively (Table 10).
17. Uptake of the Td/IPV<sup>4</sup> teenage booster in the 2023-24 school year 9 (children reaching 14 years of age) was 70.9%. Coverage of two doses of MMR in this year group is currently 93.6% and coverage of one dose is 96.2%. Coverage of two doses of MMR vaccine ranged by HB from 91.6% (Cardiff and Vale) to 95.0% (Betsi Cadwaladr). Coverage of a full course of immunisation against rubella (two doses of MMR) in 14-year-old girls in this school year group was 93.5% (Table 11).
18. Coverage of the Td/IPV teenage booster in the 2023-24 school year 10 (children reaching 15 years of age) was 71.3%. Coverage ranged by HB from 62.6% (Aneurin Bevan) to 83.5% (Swansea Bay). Coverage of two doses of MMR in this year group was 93.1% and coverage of one dose was 95.7%. Coverage of two doses of MMR vaccine ranged by HB from 90.8% (Aneurin Bevan) to 95.4% (Cwm Taf Morgannwg). Coverage of a full course of immunisation against rubella (two doses of MMR) in 15-year-old girls in this school year group was 93.2% (Table 12).
19. Coverage of the Td/IPV teenage booster in the 2023-24 school year 11 (children reaching 16 years of age) was 76.4%. Coverage ranged by HB from 65.6% (Aneurin Bevan) to 86.3% (Swansea Bay). Coverage of two doses of MMR in this year group was 93.0% and coverage of one dose was 95.7%. Coverage of two doses of MMR vaccine ranged by HB from 90.5% (Cardiff and Vale) to 95.5% (Cwm Taf Morgannwg). Coverage of a full course of immunisation against rubella (two doses of MMR) in 16-year-old girls in this school year group was 93.5% (Table 13).
20. Coverage of two doses of MMR in children reaching 16 years of age this quarter (between 1<sup>st</sup> April 2024 and 30<sup>th</sup> June 2024) was 92.9%, whilst coverage of one dose of MMR was 95.6%.

---

<sup>3</sup> DTaP/IPV (and dTaP/IPV) vaccines boost protection against Diphtheria, Tetanus, Pertussis and Polio infection before school entry.

<sup>4</sup>Td/IPV boosts protection against Diphtheria, Tetanus and Polio infection before entering adulthood.

Coverage of a full course of immunisation against rubella (two doses of MMR) in 16-year-old girls was 93.1%. National coverage of the Td/IPV teenage booster in children reaching 16 years of age this quarter was 75.1% (Figures 1, 2 and 3, Tables 2 and 14).

- 21.** Uptake of BCG immunisation is presented in Table 15. These data are based on BCG immunisations recorded in the National Community Child Health Database. BCG immunisation has been received by 9.5%, 8.8%, 7.3% and 7.1% of children reaching their first, second, fifth and 16<sup>th</sup> birthdays (respectively) during quarter two of 2024. This quarter Cardiff and Vale UHB had the highest proportion of children given BCG by one year of age (22.5%), two years of age (22.3%), and sixteen years of age (14.7%). Swansea Bay UHB had the highest proportion of children given BCG by five years of age (11.1%).
- 22.** Uptake data for hepatitis B immunisation in children who were at risk of perinatal infection, extracted from the Public Health Wales Tarian Database, are presented in Table 16. This quarter, uptake of three doses of hepatitis B vaccine at their first birthday decreased to 50.0%, uptake of four doses at their second birthday was 33.3% and uptake of four doses at their fifth birthday was 100.0%. Proportions should be interpreted with caution as small numbers of babies require an enhanced course of hepatitis B immunisation.

## Comment

For the April to June 2024 quarter, uptake of all immunisations in infants by their first birthday has remained stable on the whole. However, uptake of the complete three-dose course of “6 in 1” vaccine and two doses of MenB vaccine remained below 95%. Uptake of PCV primary vaccination remained above 95%.

Uptake of vaccinations at two years also remained broadly stable, following a period of previous decreases. Coverage of one dose of MMR at two years increased slightly compared to the previous quarter. Uptake of the MenB and HibMenC vaccines were the lowest of all immunisations reported on in this age group, at 92.8%.

The proportion of children who were up to date with their routine immunisations by four years increased slightly this quarter but continues to vary by health board. Uptake of two doses of MMR vaccine remains the lowest of all vaccinations included in this composite measure. The proportion of children who were up to date with their routine immunisations by five years decreased slightly this quarter, however coverage in the children reaching their fifth birthday this quarter had increased by 2.3 percentage points compared to when they were reported on at four years of age. Although there have been some quarterly fluctuations, the long-term trend in coverage of two doses of MMR by five years of age has been gradually decreasing since the first quarter of 2021 and fell below 90% this quarter.

Uptake of one dose of HPV vaccine in the 2023-24 school year 8, year 9 and 10 cohorts was 69.4%, 71.9% and 75.4%, respectively. This is higher than was reported for the 2022-23 year 8 and year 9 groups at the same time last year. Following the schedule change, those in year 8 vaccinated with one dose of HPV vaccine, from the 2023-24 academic year onwards, are now considered fully vaccinated against HPV [1]. Since 2021, there has also been a declining trend in uptake of the Td/IPV teenage booster and MenACWY vaccine by 16 years of age. Encouragingly, uptake of these vaccines in school year 9, as at the end of June, is over 70% for the first time in five years. However, uptake is still lower than 2018-19 when coverage of these vaccines in the school year 9 group at the end of June was 84%.

Ongoing work in health boards to ensure schools have coverage of at least 90% for MMR2, and recent improvements in the algorithm used to produce the dataset that is used for COVER reports has led to improvements in reported coverage of MMR vaccination in teenagers [2]. Coverage in the 2023-24 school year 11 group is currently 95.7% for MMR1 and 93.0% for MMR2, an increase compared to the 2022-23 school year 11 group at the same time last year.

Enhanced catch-up activities have been ongoing since February due a recent resurgence of measles in England. Between 1<sup>st</sup> January 2024 and 26 August 2024 UKHSA have reported 2,387 laboratory confirmed cases. The majority of these cases are associated with outbreaks in London and the West Midlands [3]. In April 2024, an outbreak of measles was declared in Gwent, resulting in 17 confirmed cases in total [4]. Importation of measles cases, following travel from measles-affected areas, and subsequent spread in the community remains a risk in Wales. The measles resurgence highlights the importance of checking vaccination status and facilitating catch-up at every opportunity, especially around school entry and alongside school vaccination sessions.

## References

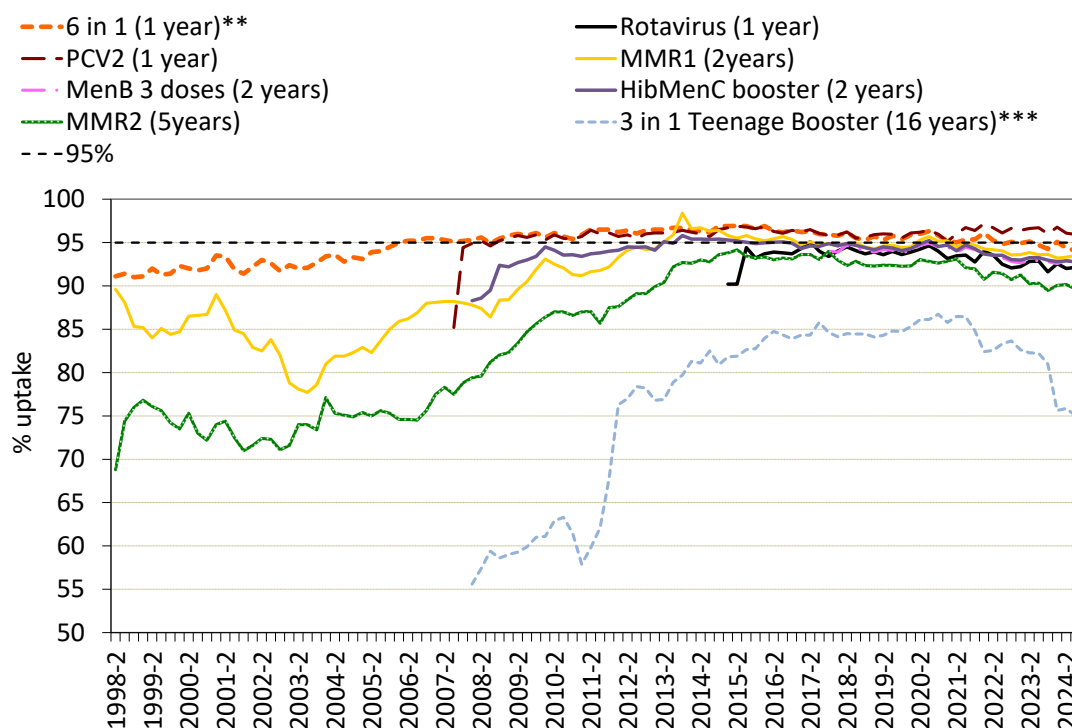
1. Welsh Health Circular- Implementing the move to one dose of HPV vaccine in Wales. Available from: <https://www.gov.wales/sites/default/files/publications/2023-05/hpv-immunisation-programme-update.pdf>
2. Welsh Health Circular- Vaccination of children to protect against measles. Available from: [Vaccination of children to protect against measles \(WHC/2024/008\) \[HTML\] | GOV.WALES](#)
3. UK Health Security Agency. News: Latest measles statistics published (29<sup>th</sup> August 2024). Available from: [Confirmed cases of measles in England by month, age, region and upper tier local authority: 2024 - GOV.UK \(www.gov.uk\)](#)
4. Public Health Wales. News: Importance of MMR vaccination stressed, as Gwent measles outbreak ends. (30<sup>th</sup> May 2024). Available from: [Importance of MMR vaccination stressed, as Gwent measles outbreak ends - Public Health Wales \(nhs.wales\)](#)

### **Report prepared by Public Health Wales Vaccine Preventable Disease Programme and Communicable Disease Surveillance Centre.**

Data for this report was provided by Digital Health Care Wales from the National Community Child Health Database (NCCHD). The data was sourced from Community Child Health databases maintained by local Child Health Office staff in Trusts throughout Wales based on regular returns from nurses and doctors who immunise or advise on immunisation. Uptake data presented throughout are for HB resident population, not for HB GP practice populations. The maps, graphs, tables 1 and 2 are best viewed in colour.

**Suggested citation for this report:** Public Health Wales Health Protection Division. Vaccine uptake in Children in Wales, April to June 2024: COVER report 151, September 2024. Cardiff, Public Health Wales. For further information on this report please contact: [phw.vaccines@wales.nhs.uk](mailto:phw.vaccines@wales.nhs.uk)

**Figure 1.** Percentage uptake of childhood immunisations in Wales, quarter 2 1998 to quarter 2 2024\*.

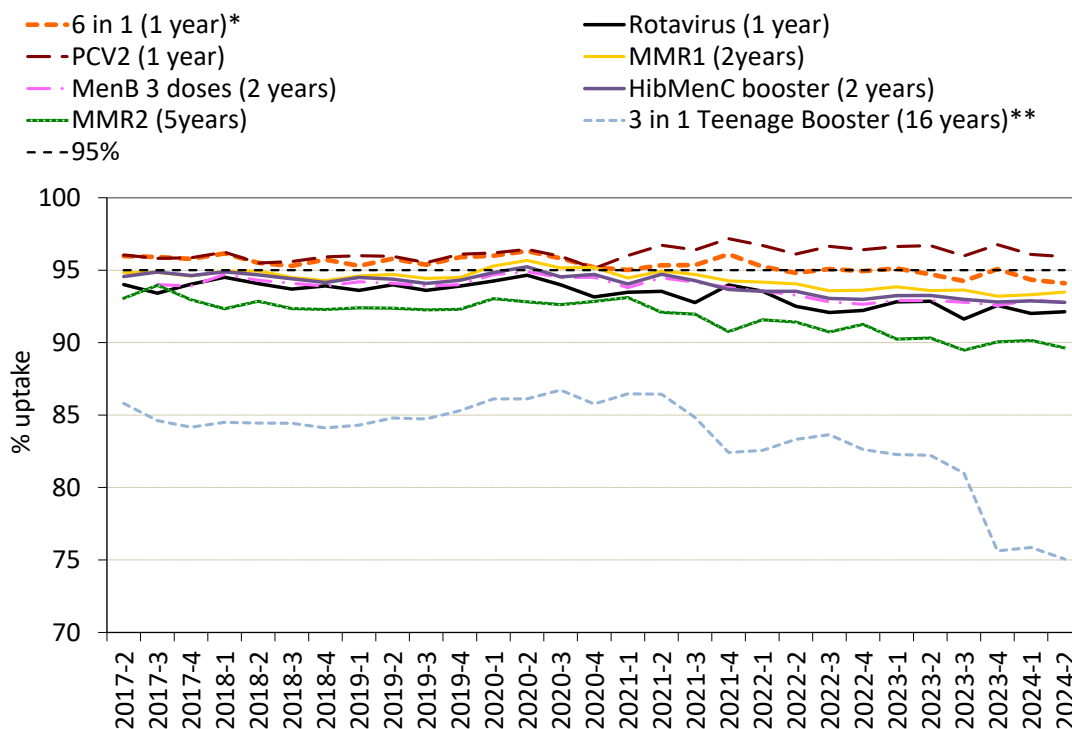


\*Uptake data for quarter 3 2014 to quarter 4 2014 presented here are based on estimates calculated in August 2015, rather than published data, due to data quality problems affecting reported uptake of some immunisations in reports published during this period.

\*\*Uptake of pertussis used as a proxy.

\*\*\*Teenage booster dose of diphtheria, tetanus and polio (diphtheria used as proxy).

**Figure 2.** Percentage uptake of childhood immunisations in Wales, quarter 2 2017 to quarter 2 2024\*\*\*



\* Uptake of pertussis used as proxy.

\*\* Teenage booster used dose of diphtheria, tetanus and polio (diphtheria used as proxy).

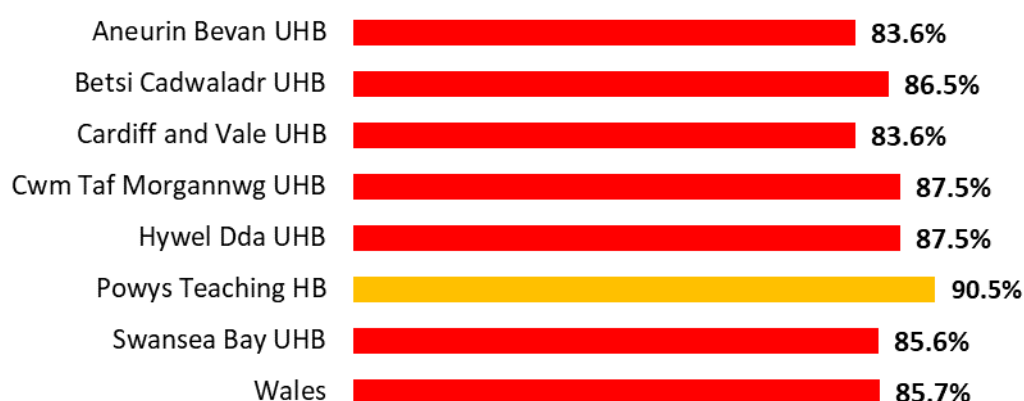
\*\*\*Uptake data for MMR2 at 5 years and the "3 in 1" teenage booster at 16 years from 2015 Q1 to 2018 Q3 are based on estimates calculated in February 2019, rather than published data. This is due to improvements in data quality made during early 2019.

**Figure 3.** Summary of uptake rates for selected immunisations in resident children reaching their 1<sup>st</sup>, 2<sup>nd</sup>, 5<sup>th</sup> and 16<sup>th</sup> birthday between 01/04/24 and 30/06/24 and resident on 30/06/24.

### All Wales Summary - COVER 151



**Figure 4.** Percentage uptake of resident children reaching their 4<sup>th</sup> birthday between 01/04/24 and 30/06/24 and are up to date with all scheduled vaccines<sup>7</sup> by health board.



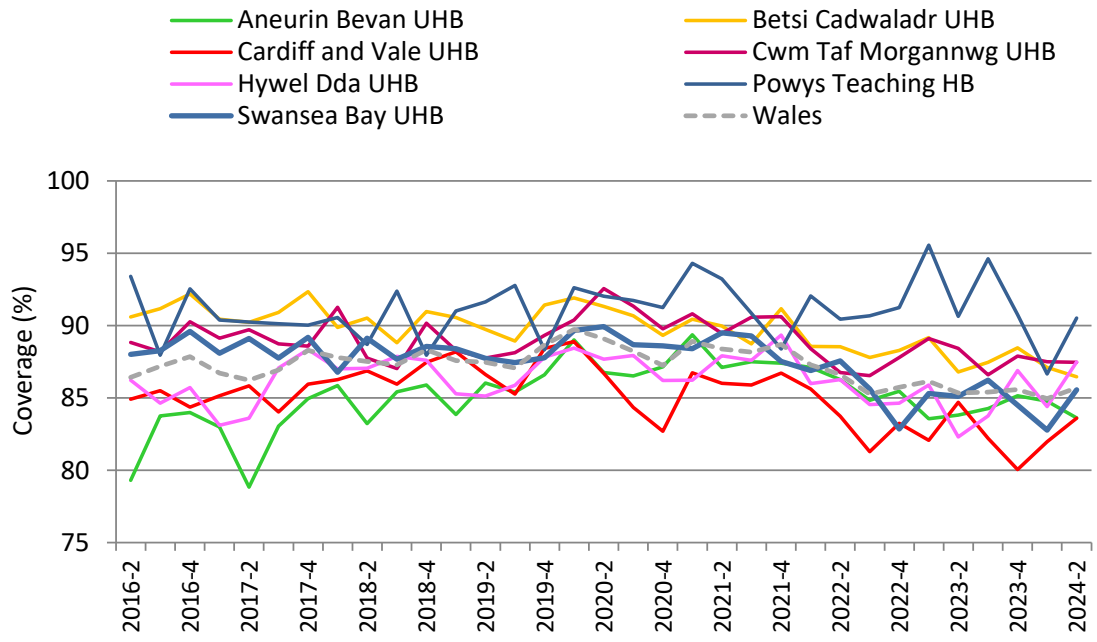
**Table 1.** Percentages of resident children reaching their 4<sup>th</sup> birthday during quarter 1 2023 to quarter 2 2024 who are up to date with all scheduled vaccines<sup>7</sup>, by Health Board.

Area	2023-1	2023-2	2023-3	2023-4	2024-1	2024-2
Aneurin Bevan UHB	83.6	83.8	84.3	85.2	84.8	83.6
Betsi Cadwaladr UHB	89.2	86.8	87.5	88.5	87.1	86.5
Cardiff and Vale UHB	82.1	84.7	82.2	80.0	82.0	83.6
Cwm Taf Morgannwg UHB	89.1	88.4	86.6	87.9	87.5	87.5
Hywel Dda UHB	85.9	82.3	83.8	86.9	84.4	87.5
Powys Teaching HB	95.6	90.6	94.6	90.8	86.7	90.5
Swansea Bay UHB	85.3	85.1	86.2	84.5	82.8	85.6
<b>Wales</b>	<b>86.1</b>	<b>85.4</b>	<b>85.4</b>	<b>85.6</b>	<b>84.9</b>	<b>85.7</b>

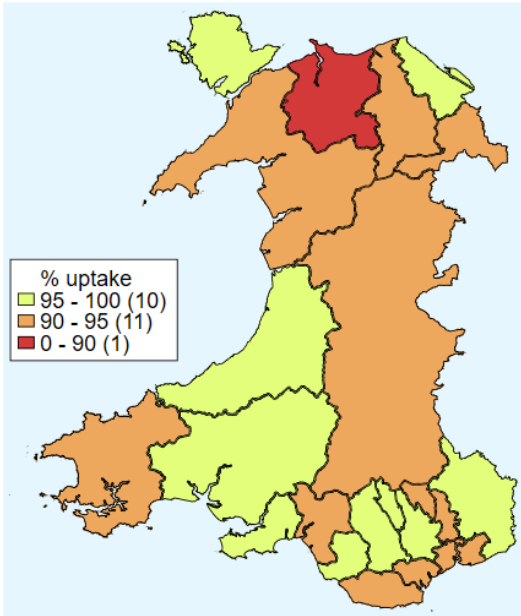
<sup>7</sup>Completed "4 in 1" preschool booster, the Hib/MenC booster and second MMR dose by four years of age.



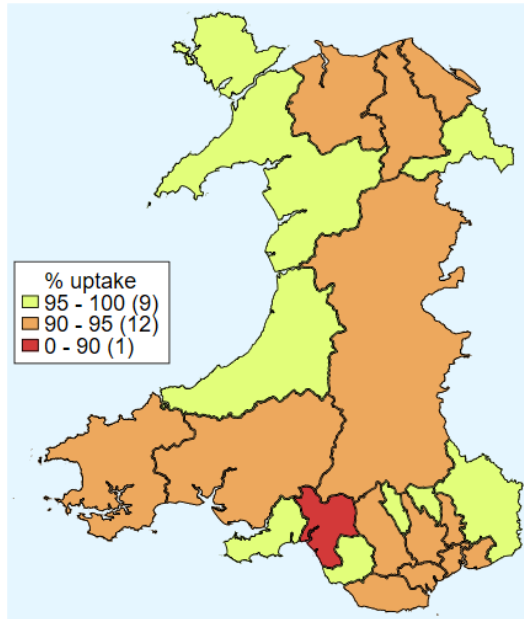
**Figure 5.** Trends in the percentages of children reaching their 4<sup>th</sup> birthday during quarter 2 2016 to quarter 2 2024, who are up to date with all scheduled vaccines<sup>7</sup>, by health board.



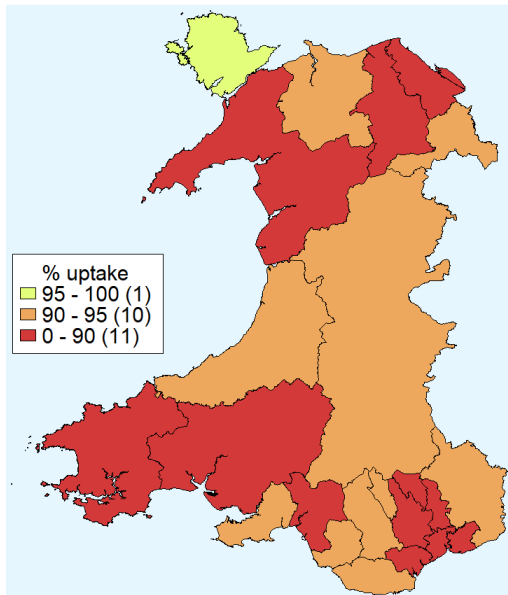
**Figure 6.** Uptake of “6 in 1” vaccine in Welsh Local Authority areas in children reaching their 1<sup>st</sup> birthday between 01/04/24 and 30/06/24.



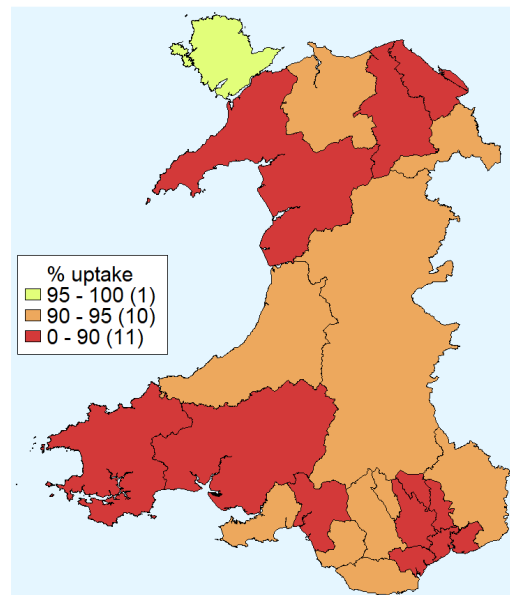
**Figure 7.** Uptake of at least one dose of MMR immunisation in Welsh Local Authority areas in children reaching their 2<sup>nd</sup> birthday between 01/04/24 and 30/06/24.



**Figure 8.** Uptake of two doses of MMR vaccine in Welsh Local Authority areas in children reaching their 5<sup>th</sup> birthday between 01/04/24 and 30/06/24.



**Figure 9.** Uptake of “4 in 1” vaccine in Welsh Local Authority areas in children reaching their 5<sup>th</sup> birthday between 01/04/24 and 30/06/24.









**Table 5.** Vaccine uptake in children reaching their 4<sup>th</sup> birthday between 01/04/24 and 30/06/24 and resident on 30/06/24. The proportion of children who have received all of these vaccines by their 4th birthday is also presented.

Area	Resident children	4 in 1 Preschool Booster <sup>1</sup>		HibMenC		MMR dose 2		Up to date in schedule <sup>2</sup>	
	(n)	(n)	(%)	(n)	(%)	(n)	(%)	(n)	(%)
<b><u>Aneurin Bevan University HB</u></b>									
Blaenau Gwent LA	174	152	87.4	166	95.4	153	87.9	150	86.2
Caerphilly LA	411	360	87.6	396	96.4	359	87.3	356	86.6
Monmouthshire LA	211	189	89.6	203	96.2	188	89.1	187	88.6
Newport LA	521	418	80.2	465	89.3	418	80.2	405	77.7
Torfaen LA	258	223	86.4	239	92.6	225	87.2	219	84.9
<b>Health Board Total</b>	<b>1575</b>	<b>1342</b>	<b>85.2</b>	<b>1469</b>	<b>93.3</b>	<b>1343</b>	<b>85.3</b>	<b>1317</b>	<b>83.6</b>
<b><u>Betsi Cadwaladr University HB</u></b>									
Anglesey LA	156	147	94.2	151	96.8	147	94.2	147	94.2
Conwy LA	246	206	83.7	227	92.3	208	84.6	204	82.9
Denbighshire LA	263	225	85.6	249	94.7	224	85.2	223	84.8
Flintshire LA	353	305	86.4	328	92.9	301	85.3	300	85.0
Gwynedd LA	250	220	88.0	235	94.0	224	89.6	219	87.6
Wrexham LA	306	272	88.9	290	94.8	273	89.2	268	87.6
<b>Health Board Total</b>	<b>1574</b>	<b>1375</b>	<b>87.4</b>	<b>1480</b>	<b>94.0</b>	<b>1377</b>	<b>87.5</b>	<b>1361</b>	<b>86.5</b>
<b><u>Cardiff and Vale University HB</u></b>									
Cardiff LA	937	806	86.0	857	91.5	799	85.3	782	83.5
Vale of Glamorgan LA	332	282	84.9	316	95.2	282	84.9	279	84.0
<b>Health Board Total</b>	<b>1269</b>	<b>1088</b>	<b>85.7</b>	<b>1173</b>	<b>92.4</b>	<b>1081</b>	<b>85.2</b>	<b>1061</b>	<b>83.6</b>
<b><u>Cwm Taf Morgannwg University HB</u></b>									
Bridgend LA	350	324	92.6	339	96.9	322	92.0	319	91.1
Merthyr Tydfil LA	165	139	84.2	149	90.3	137	83.0	132	80.0
Rhondda Cynon Taf LA	634	563	88.8	602	95.0	565	89.1	554	87.4
<b>Health Board Total</b>	<b>1149</b>	<b>1026</b>	<b>89.3</b>	<b>1090</b>	<b>94.9</b>	<b>1024</b>	<b>89.1</b>	<b>1005</b>	<b>87.5</b>
<b><u>Hywel Dda University HB</u></b>									
Cardiff LA	451	397	88.0	435	96.5	398	88.2	395	87.6
Ceredigion LA	138	124	89.9	129	93.5	123	89.1	122	88.4
Pembrokeshire LA	258	228	88.4	246	95.3	226	87.6	224	86.8
<b>Health Board Total</b>	<b>847</b>	<b>749</b>	<b>88.4</b>	<b>810</b>	<b>95.6</b>	<b>747</b>	<b>88.2</b>	<b>741</b>	<b>87.5</b>
<b><u>Powys Teaching HB</u></b>									
<b>Health Board Total</b>	<b>285</b>	<b>259</b>	<b>90.9</b>	<b>274</b>	<b>96.1</b>	<b>259</b>	<b>90.9</b>	<b>258</b>	<b>90.5</b>
<b><u>Swansea Bay University HB</u></b>									
Neath Port Talbot LA	335	288	86.0	318	94.9	287	85.7	285	85.1
Swansea LA	559	485	86.8	514	91.9	491	87.8	480	85.9
<b>Health Board Total</b>	<b>894</b>	<b>773</b>	<b>86.5</b>	<b>832</b>	<b>93.1</b>	<b>778</b>	<b>87.0</b>	<b>765</b>	<b>85.6</b>
Unknown	9	7	77.8	8	88.9	7	77.8	7	77.8
<b>Wales Total</b>	<b>7602</b>	<b>6619</b>	<b>87.1</b>	<b>7136</b>	<b>93.9</b>	<b>6616</b>	<b>87.0</b>	<b>6515</b>	<b>85.7</b>

<sup>1</sup> Uptake of acellular pertussis used as proxy.

<sup>2</sup> Completed "4 in 1" preschool booster, the Hib/ MenC booster and second MMR dose by four years of age.

**Table 6.** Vaccine uptake in children reaching their 5<sup>th</sup> birthday between 01/04/24 and 30/06/24 and resident on 30/06/24. The proportion of children who have received all of these vaccines by their 5<sup>th</sup> birthday is also presented.

Area	Resident children (n)	4 in 1 Preschool Booster <sup>1</sup>		HibMenCb		MMR dose 2		Up to date in schedule <sup>2</sup>	
		(n)	(%)	(n)	(%)	(n)	(%)	(n)	(%)
<b><u>Aneurin Bevan University HB</u></b>									
Blaenau Gwent LA	208	183	88.0	198	95.2	183	88.0	182	87.5
Caerphilly LA	434	385	88.7	412	94.9	388	89.4	378	87.1
Monmouthshire LA	208	191	91.8	197	94.7	192	92.3	189	90.9
Newport LA	535	456	85.2	473	88.4	456	85.2	438	81.9
Torfaen LA	271	237	87.5	252	93.0	236	87.1	234	86.3
<b>Health Board Total</b>	<b>1656</b>	<b>1452</b>	<b>87.7</b>	<b>1532</b>	<b>92.5</b>	<b>1455</b>	<b>87.9</b>	<b>1421</b>	<b>85.8</b>
<b><u>Betsi Cadwaladr University HB</u></b>									
Anglesey LA	139	133	95.7	136	97.8	135	97.1	132	95.0
Conwy LA	278	260	93.5	268	96.4	260	93.5	258	92.8
Denbighshire LA	276	241	87.3	257	93.1	239	86.6	238	86.2
Flintshire LA	367	328	89.4	340	92.6	330	89.9	325	88.6
Gwynedd LA	286	254	88.8	265	92.7	255	89.2	250	87.4
Wrexham LA	321	300	93.5	308	96.0	300	93.5	297	92.5
<b>Health Board Total</b>	<b>1667</b>	<b>1516</b>	<b>90.9</b>	<b>1574</b>	<b>94.4</b>	<b>1519</b>	<b>91.1</b>	<b>1500</b>	<b>90.0</b>
<b><u>Cardiff and Vale University HB</u></b>									
Cardiff LA	939	816	86.9	861	91.7	821	87.4	788	83.9
Vale of Glamorgan LA	321	298	92.8	306	95.3	298	92.8	293	91.3
<b>Health Board Total</b>	<b>1260</b>	<b>1114</b>	<b>88.4</b>	<b>1167</b>	<b>92.6</b>	<b>1119</b>	<b>88.8</b>	<b>1081</b>	<b>85.8</b>
<b><u>Cwm Taf Morgannwg University HB</u></b>									
Bridgend LA	348	318	91.4	338	97.1	323	92.8	315	90.5
Merthyr Tydfil LA	162	148	91.4	155	95.7	148	91.4	146	90.1
Rhondda Cynon Taf LA	633	584	92.3	601	94.9	584	92.3	570	90.0
<b>Health Board Total</b>	<b>1143</b>	<b>1050</b>	<b>91.9</b>	<b>1094</b>	<b>95.7</b>	<b>1055</b>	<b>92.3</b>	<b>1031</b>	<b>90.2</b>
<b><u>Hywel Dda University HB</u></b>									
Carmarthenshire LA	451	375	83.1	417	92.5	379	84.0	371	82.3
Ceredigion LA	151	139	92.1	140	92.7	136	90.1	134	88.7
Pembrokeshire LA	276	242	87.7	267	96.7	244	88.4	240	87.0
<b>Health Board Total</b>	<b>878</b>	<b>756</b>	<b>86.1</b>	<b>824</b>	<b>93.8</b>	<b>759</b>	<b>86.4</b>	<b>745</b>	<b>84.9</b>
<b><u>Powys Teaching HB</u></b>									
<b>Health Board Total</b>	<b>293</b>	<b>269</b>	<b>91.8</b>	<b>278</b>	<b>94.9</b>	<b>270</b>	<b>92.2</b>	<b>267</b>	<b>91.1</b>
<b><u>Swansea Bay University HB</u></b>									
Neath Port Talbot LA	332	291	87.7	310	93.4	293	88.3	286	86.1
Swansea LA	606	558	92.1	571	94.2	553	91.3	542	89.4
<b>Health Board Total</b>	<b>938</b>	<b>849</b>	<b>90.5</b>	<b>881</b>	<b>93.9</b>	<b>846</b>	<b>90.2</b>	<b>828</b>	<b>88.3</b>
Unknown	0	0	0.0	0	0.0	0	0.0	0	0.0
<b>Wales Total</b>	<b>7835</b>	<b>7006</b>	<b>89.4</b>	<b>7350</b>	<b>93.8</b>	<b>7023</b>	<b>89.6</b>	<b>6873</b>	<b>87.7</b>

<sup>1</sup> Uptake of acellular pertussis used as proxy

<sup>2</sup> Completed "4 in 1" preschool booster, the Hib/ MenC booster and second MMR dose by five years of age.





**Table 8a.** Uptake of HPV vaccine in children reaching 13 years of age between 01/09/23 and 31/08/24 (School Year 8) and resident on 30/06/24, with breakdown of coverage for sex.

Area	Resident children			Resident girls			Resident boys		
	(n)	HPV 1 dose (n)	HPV 1 dose (%)	(n)	HPV 1 dose (girls) (n)	HPV 1 dose (girls) (%)	(n)	HPV 1 dose (boys) (n)	HPV 1 dose (boys) (%)
<b><u>Aneurin Bevan University HB</u></b>									
Blaenau Gwent LA	813	494	60.8	368	235	63.9	445	259	58.2
Caerphilly LA	2269	1471	64.8	1141	788	69.1	1127	682	60.5
Monmouthshire LA	1052	713	67.8	521	362	69.5	531	351	66.1
Newport LA	2302	1376	59.8	1162	724	62.3	1139	652	57.2
Torfaen LA	1220	807	66.1	593	432	72.8	627	375	59.8
<b>Health Board Total</b>	<b>7656</b>	<b>4861</b>	<b>63.5</b>	<b>3785</b>	<b>2541</b>	<b>67.1</b>	<b>3869</b>	<b>2319</b>	<b>59.9</b>
<b><u>Betsi Cadwaladr University HB</u></b>									
Anglesey LA	847	617	72.8	409	318	77.8	438	299	68.3
Conwy LA	1328	757	57.0	636	391	61.5	691	365	52.8
Denbighshire LA	1241	640	51.6	615	334	54.3	626	306	48.9
Flintshire LA	1833	1158	63.2	906	627	69.2	927	531	57.3
Gwynedd LA	1348	966	71.7	685	518	75.6	663	448	67.6
Wrexham LA	1697	1081	63.7	863	579	67.1	834	502	60.2
<b>Health Board Total</b>	<b>8294</b>	<b>5219</b>	<b>62.9</b>	<b>4114</b>	<b>2767</b>	<b>67.3</b>	<b>4179</b>	<b>2451</b>	<b>58.7</b>
<b><u>Cardiff and Vale University HB</u></b>									
Cardiff LA	4808	3159	65.7	2273	1557	68.5	2535	1602	63.2
Vale of Glamorgan LA	1739	1398	80.4	871	708	81.3	868	690	79.5
<b>Health Board Total</b>	<b>6547</b>	<b>4557</b>	<b>69.6</b>	<b>3144</b>	<b>2265</b>	<b>72.0</b>	<b>3403</b>	<b>2292</b>	<b>67.4</b>
<b><u>Cwm Taf Morgannwg University HB</u></b>									
Bridgend LA	1863	1371	73.6	885	663	74.9	978	708	72.4
Merthyr Tydfil LA	760	506	66.6	361	256	70.9	399	250	62.7
Rhondda Cynon Taf LA	3159	2252	71.3	1561	1160	74.3	1597	1091	68.3
<b>Health Board Total</b>	<b>5782</b>	<b>4129</b>	<b>71.4</b>	<b>2807</b>	<b>2079</b>	<b>74.1</b>	<b>2974</b>	<b>2049</b>	<b>68.9</b>
<b><u>Hywel Dda University HB</u></b>									
Carmarthenshire LA	2344	1763	75.2	1146	891	77.7	1198	872	72.8
Ceredigion LA	684	525	76.8	329	260	79.0	355	265	74.6
Pembrokeshire LA	1423	997	70.1	724	524	72.4	698	473	67.8
<b>Health Board Total</b>	<b>4451</b>	<b>3285</b>	<b>73.8</b>	<b>2199</b>	<b>1675</b>	<b>76.2</b>	<b>2251</b>	<b>1610</b>	<b>71.5</b>
<b><u>Powys Teaching HB</u></b>									
<b>Health Board Total</b>	<b>1422</b>	<b>1040</b>	<b>73.1</b>	<b>715</b>	<b>526</b>	<b>73.6</b>	<b>706</b>	<b>514</b>	<b>72.8</b>
<b><u>Swansea Bay University HB</u></b>									
Neath Port Talbot LA	1777	1469	82.7	863	729	84.5	914	740	81.0
Swansea LA	2970	2459	82.8	1395	1168	83.7	1575	1291	82.0
<b>Health Board Total</b>	<b>4747</b>	<b>3928</b>	<b>82.7</b>	<b>2258</b>	<b>1897</b>	<b>84.0</b>	<b>2489</b>	<b>2031</b>	<b>81.6</b>
Unknown	23	7	30.4	12	3	25.0	11	4	36.4
<b>Wales Total</b>	<b>38922</b>	<b>27026</b>	<b>69.4</b>	<b>19034</b>	<b>13753</b>	<b>72.3</b>	<b>19882</b>	<b>13270</b>	<b>66.7</b>

<sup>1</sup> Timings of immunisation sessions vary between HBs, and uptake will increase over the next quarter as more immunisation sessions taken place.

**Table 8b.** Uptake of HPV vaccine in children reaching 14 years of age between 01/09/23 and 31/08/24 (School Year 9) and resident on 30/06/24, with breakdown of coverage for sex.

Area	Resident children			Resident girls (n)			Resident boys (n)		
	(n)	HPV 1 dose (n)	(%)	(n)	HPV 1 dose (n)	(%)	(n)	HPV 1 dose (n)	(%)
<b><u>Aneurin Bevan University HB</u></b>									
Blaenau Gwent LA	829	521	62.8	420	282	67.1	409	239	58.4
Caerphilly LA	2269	1568	69.1	1101	797	72.4	1168	771	66.0
Monmouthshire LA	1096	775	70.7	528	381	72.2	567	394	69.5
Newport LA	2251	1360	60.4	1112	695	62.5	1139	665	58.4
Torfaen LA	1203	817	67.9	604	447	74.0	599	370	61.8
<b>Health Board Total</b>	<b>7648</b>	<b>5041</b>	<b>65.9</b>	<b>3765</b>	<b>2602</b>	<b>69.1</b>	<b>3882</b>	<b>2439</b>	<b>62.8</b>
<b><u>Betsi Cadwaladr University HB</u></b>									
Anglesey LA	814	563	69.2	398	288	72.4	416	275	66.1
Conwy LA	1347	882	65.5	661	468	70.8	685	414	60.4
Denbighshire LA	1200	700	58.3	591	371	62.8	609	329	54.0
Flintshire LA	1849	1364	73.8	859	668	77.8	990	696	70.3
Gwynedd LA	1392	1023	73.5	643	497	77.3	748	526	70.3
Wrexham LA	1653	1156	69.9	809	597	73.8	844	559	66.2
<b>Health Board Total</b>	<b>8255</b>	<b>5688</b>	<b>68.9</b>	<b>3961</b>	<b>2889</b>	<b>72.9</b>	<b>4292</b>	<b>2799</b>	<b>65.2</b>
<b><u>Cardiff and Vale University HB</u></b>									
Cardiff LA	4617	2951	63.9	2252	1514	67.2	2365	1437	60.8
Vale of Glamorgan LA	1745	1317	75.5	859	684	79.6	886	633	71.4
<b>Health Board Total</b>	<b>6362</b>	<b>4268</b>	<b>67.1</b>	<b>3111</b>	<b>2198</b>	<b>70.7</b>	<b>3251</b>	<b>2070</b>	<b>63.7</b>
<b><u>Cwm Taf Morgannwg University HB</u></b>									
Bridgend LA	1798	1430	79.5	886	729	82.3	912	701	76.9
Merthyr Tydfil LA	697	517	74.2	316	252	79.7	381	265	69.6
Rhondda Cynon Taf LA	3012	2323	77.1	1514	1214	80.2	1498	1109	74.0
<b>Health Board Total</b>	<b>5507</b>	<b>4270</b>	<b>77.5</b>	<b>2716</b>	<b>2195</b>	<b>80.8</b>	<b>2791</b>	<b>2075</b>	<b>74.3</b>
<b><u>Hywel Dda University HB</u></b>									
Carmarthenshire LA	2185	1678	76.8	1044	828	79.3	1141	850	74.5
Ceredigion LA	752	594	79.0	381	317	83.2	371	277	74.7
Pembrokeshire LA	1414	925	65.4	702	505	71.9	712	420	59.0
<b>Health Board Total</b>	<b>4351</b>	<b>3197</b>	<b>73.5</b>	<b>2127</b>	<b>1650</b>	<b>77.6</b>	<b>2224</b>	<b>1547</b>	<b>69.6</b>
<b><u>Powys Teaching HB</u></b>									
<b>Health Board Total</b>	<b>1322</b>	<b>1018</b>	<b>77.0</b>	<b>648</b>	<b>515</b>	<b>79.5</b>	<b>674</b>	<b>503</b>	<b>74.6</b>
<b><u>Swansea Bay University HB</u></b>									
Neath Port Talbot LA	1686	1445	85.7	818	706	86.3	867	739	85.2
Swansea LA	2847	2380	83.6	1380	1175	85.1	1467	1205	82.1
<b>Health Board Total</b>	<b>4533</b>	<b>3825</b>	<b>84.4</b>	<b>2198</b>	<b>1881</b>	<b>85.6</b>	<b>2334</b>	<b>1944</b>	<b>83.3</b>
Unknown	26	15	57.7	17	9	52.9	9	6	66.7
<b>Wales Total</b>	<b>38004</b>	<b>27322</b>	<b>71.9</b>	<b>18543</b>	<b>13939</b>	<b>75.2</b>	<b>19457</b>	<b>13383</b>	<b>68.8</b>

<sup>1</sup> Timings of immunisation sessions vary between HBs, and uptake will increase over the next quarter as more immunisation sessions taken place.

**Table 8c.** Uptake of HPV vaccine in children reaching 15 years of age between 01/09/23 and 31/08/24 (School Year 10) and resident on 30/06/24, with breakdown of coverage for sex.

Area	Resident children			Resident girls (n)			Resident boys (n)		
	(n)	HPV 1 dose (n)	(%)	(n)	HPV 1 dose (n)	(%)	(n)	HPV 1 dose (n)	(%)
<b><u>Aneurin Bevan University HB</u></b>									
Blaenau Gwent LA	808	563	69.7	378	275	72.8	430	288	67.0
Caerphilly LA	2214	1547	69.9	1076	796	74.0	1138	751	66.0
Monmouthshire LA	1141	816	71.5	559	425	76.0	582	391	67.2
Newport LA	2209	1384	62.7	1032	679	65.8	1176	705	59.9
Torfaen LA	1186	837	70.6	553	420	75.9	632	417	66.0
<b>Health Board Total</b>	<b>7558</b>	<b>5147</b>	<b>68.1</b>	<b>3598</b>	<b>2595</b>	<b>72.1</b>	<b>3958</b>	<b>2552</b>	<b>64.5</b>
<b><u>Betsi Cadwaladr University HB</u></b>									
Anglesey LA	826	669	81.0	392	334	85.2	434	335	77.2
Conwy LA	1248	940	75.3	618	488	79.0	630	452	71.7
Denbighshire LA	1198	825	68.9	598	423	70.7	600	402	67.0
Flintshire LA	1801	1464	81.3	874	741	84.8	927	723	78.0
Gwynedd LA	1329	1086	81.7	644	557	86.5	685	529	77.2
Wrexham LA	1636	1281	78.3	774	624	80.6	862	657	76.2
<b>Health Board Total</b>	<b>8038</b>	<b>6265</b>	<b>77.9</b>	<b>3900</b>	<b>3167</b>	<b>81.2</b>	<b>4138</b>	<b>3098</b>	<b>74.9</b>
<b><u>Cardiff and Vale University HB</u></b>									
Cardiff LA	4632	2695	58.2	2283	1389	60.8	2349	1306	55.6
Vale of Glamorgan LA	1703	1237	72.6	821	642	78.2	882	595	67.5
<b>Health Board Total</b>	<b>6335</b>	<b>3932</b>	<b>62.1</b>	<b>3104</b>	<b>2031</b>	<b>65.4</b>	<b>3231</b>	<b>1901</b>	<b>58.8</b>
<b><u>Cwm Taf Morgannwg University HB</u></b>									
Bridgend LA	1683	1443	85.7	769	675	87.8	914	768	84.0
Merthyr Tydfil LA	753	550	73.0	388	303	78.1	365	247	67.7
Rhondda Cynon Taf LA	2989	2563	85.7	1461	1293	88.5	1528	1270	83.1
<b>Health Board Total</b>	<b>5425</b>	<b>4556</b>	<b>84.0</b>	<b>2618</b>	<b>2271</b>	<b>86.7</b>	<b>2807</b>	<b>2285</b>	<b>81.4</b>
<b><u>Hywel Dda University HB</u></b>									
Carmarthenshire LA	2164	1756	81.1	1078	899	83.4	1086	857	78.9
Ceredigion LA	610	526	86.2	308	275	89.3	302	251	83.1
Pembrokeshire LA	1366	954	69.8	693	528	76.2	673	426	63.3
<b>Health Board Total</b>	<b>4140</b>	<b>3236</b>	<b>78.2</b>	<b>2079</b>	<b>1702</b>	<b>81.9</b>	<b>2061</b>	<b>1534</b>	<b>74.4</b>
<b><u>Powys Teaching HB</u></b>									
<b>Health Board Total</b>	<b>1349</b>	<b>1058</b>	<b>78.4</b>	<b>654</b>	<b>535</b>	<b>81.8</b>	<b>695</b>	<b>523</b>	<b>75.3</b>
<b><u>Swansea Bay University HB</u></b>									
Neath Port Talbot LA	1698	1511	89.0	821	746	90.9	877	765	87.2
Swansea LA	2802	2471	88.2	1353	1212	89.6	1449	1259	86.9
<b>Health Board Total</b>	<b>4500</b>	<b>3982</b>	<b>88.5</b>	<b>2174</b>	<b>1958</b>	<b>90.1</b>	<b>2326</b>	<b>2024</b>	<b>87.0</b>
Unknown	27	11	40.7	14	8	57.1	13	3	23.1
<b>Wales Total</b>	<b>37372</b>	<b>28187</b>	<b>75.4</b>	<b>18141</b>	<b>14267</b>	<b>78.6</b>	<b>19229</b>	<b>13920</b>	<b>72.4</b>

<sup>1</sup> Timings of immunisation sessions vary between HBs, and uptake will increase over the next quarter as more immunisation sessions taken place.

**Table 9.** Uptake of HPV vaccine in children reaching 13, 14 and 15 years of age between 01/09/23 and 31/08/24 and resident on 30/06/24.

Area	13 years (2023-24 School Year 8) <sup>1</sup>			14 years (2023-24 School Year 9) <sup>1</sup>			15 years (2023-24 School Year 10)		
	Resident children (n)	HPV 1 dose (n)	(%)	Resident children (n)	HPV 1 dose (n)	(%)	Resident children (n)	HPV 1 dose (n)	(%)
<b><u>Aneurin Bevan University HB</u></b>									
Blaenau Gwent LA	813	494	60.8	829	521	62.8	808	563	69.7
Caerphilly LA	2269	1471	64.8	2269	1568	69.1	2214	1547	69.9
Monmouthshire LA	1052	713	67.8	1096	775	70.7	1141	816	71.5
Newport LA	2302	1376	59.8	2251	1360	60.4	2209	1384	62.7
Torfaen LA	1220	807	66.1	1203	817	67.9	1186	837	70.6
<b>Health Board Total</b>	<b>7656</b>	<b>4861</b>	<b>63.5</b>	<b>7648</b>	<b>5041</b>	<b>65.9</b>	<b>7558</b>	<b>5147</b>	<b>68.1</b>
<b><u>Betsi Cadwaladr University HB</u></b>									
Anglesey LA	847	617	72.8	814	563	69.2	826	669	81.0
Conwy LA	1328	757	57.0	1347	882	65.5	1248	940	75.3
Denbighshire LA	1241	640	51.6	1200	700	58.3	1198	825	68.9
Flintshire LA	1833	1158	63.2	1849	1364	73.8	1801	1464	81.3
Gwynedd LA	1348	966	71.7	1392	1023	73.5	1329	1086	81.7
Wrexham LA	1697	1081	63.7	1653	1156	69.9	1636	1281	78.3
<b>Health Board Total</b>	<b>8294</b>	<b>5219</b>	<b>62.9</b>	<b>8255</b>	<b>5688</b>	<b>68.9</b>	<b>8038</b>	<b>6265</b>	<b>77.9</b>
<b><u>Cardiff and Vale University HB</u></b>									
Cardiff LA	4808	3159	65.7	4617	2951	63.9	4632	2695	58.2
Vale of Glamorgan LA	1739	1398	80.4	1745	1317	75.5	1703	1237	72.6
<b>Health Board Total</b>	<b>6547</b>	<b>4557</b>	<b>69.6</b>	<b>6362</b>	<b>4268</b>	<b>67.1</b>	<b>6335</b>	<b>3932</b>	<b>62.1</b>
<b><u>Cwm Taf Morgannwg University HB</u></b>									
Bridgend LA	1863	1371	73.6	1798	1430	79.5	1683	1443	85.7
Merthyr Tydfil LA	760	506	66.6	697	517	74.2	753	550	73.0
Rhondda Cynon Taf LA	3159	2252	71.3	3012	2323	77.1	2989	2563	85.7
<b>Health Board Total</b>	<b>5782</b>	<b>4129</b>	<b>71.4</b>	<b>5507</b>	<b>4270</b>	<b>77.5</b>	<b>5425</b>	<b>4556</b>	<b>84.0</b>
<b><u>Hywel Dda University HB</u></b>									
Carmarthenshire LA	2344	1763	75.2	2185	1678	76.8	2164	1756	81.1
Ceredigion LA	684	525	76.8	752	594	79.0	610	526	86.2
Pembrokeshire LA	1423	997	70.1	1414	925	65.4	1366	954	69.8
<b>Health Board Total</b>	<b>4451</b>	<b>3285</b>	<b>73.8</b>	<b>4351</b>	<b>3197</b>	<b>73.5</b>	<b>4140</b>	<b>3236</b>	<b>78.2</b>
<b><u>Powys Teaching HB</u></b>									
<b>Health Board Total</b>	<b>1422</b>	<b>1040</b>	<b>73.1</b>	<b>1322</b>	<b>1018</b>	<b>77.0</b>	<b>1349</b>	<b>1058</b>	<b>78.4</b>
<b><u>Swansea Bay University HB</u></b>									
Neath Port Talbot LA	1777	1469	82.7	1686	1445	85.7	1698	1511	89.0
Swansea LA	2970	2459	82.8	2847	2380	83.6	2802	2471	88.2
<b>Health Board Total</b>	<b>4747</b>	<b>3928</b>	<b>82.7</b>	<b>4533</b>	<b>3825</b>	<b>84.4</b>	<b>4500</b>	<b>3982</b>	<b>88.5</b>
Unknown	23	7	30.4	26	15	57.7	27	11	40.7
<b>Wales Total</b>	<b>38922</b>	<b>27026</b>	<b>69.4</b>	<b>38004</b>	<b>27322</b>	<b>71.9</b>	<b>37372</b>	<b>28187</b>	<b>75.4</b>

<sup>1</sup> Timings of immunisation sessions vary between HBs, and uptake will increase over the next quarter as more immunisation sessions taken place.

**Table 10.** Uptake of MenACWY vaccine in teenagers reaching 14, 15, 16 and 17 years of age between 01/09/23 and 31/08/24 and resident on 30/06/24.

Area	14 years (2023-24 School Year 9) <sup>1</sup>			15 years (2023-24 School Year 10)			16 years (2023-24 School Year 11)			17 years (2023-24 School Year 12)		
	Resident children (n)	MenACWY (n)	(%)	Resident children (n)	MenACWY (n)	(%)	Resident children (n)	MenACWY (n)	(%)	Resident children (n)	MenACWY (n)	(%)
<b>Aneurin Bevan University HB</b>												
Blaenau Gwent LA	829	537	64.8	808	524	64.9	870	613	70.5	743	574	77.3
Caerphilly LA	2269	1581	69.7	2214	1440	65.0	2296	1555	67.7	2112	1725	81.7
Monmouthshire LA	1096	795	72.5	1141	733	64.2	1137	791	69.6	1130	855	75.7
Newport LA	2251	1453	64.5	2209	1270	57.5	2315	1381	59.7	2097	1537	73.3
Torfaen LA	1203	850	70.7	1186	743	62.6	1161	794	68.4	1142	914	80.0
<b>Health Board Total</b>	<b>7648</b>	<b>5216</b>	<b>68.2</b>	<b>7558</b>	<b>4710</b>	<b>62.3</b>	<b>7779</b>	<b>5134</b>	<b>66.0</b>	<b>7224</b>	<b>5605</b>	<b>77.6</b>
<b>Betsi Cadwaladr University HB</b>												
Anglesey LA	814	515	63.3	826	530	64.2	818	639	78.1	789	644	81.6
Conwy LA	1347	767	56.9	1248	800	64.1	1268	992	78.2	1259	1014	80.5
Denbighshire LA	1200	640	53.3	1198	711	59.3	1254	872	69.5	1204	920	76.4
Flintshire LA	1849	1331	72.0	1801	1325	73.6	1836	1479	80.6	1819	1570	86.3
Gwynedd LA	1392	942	67.7	1329	997	75.0	1316	1136	86.3	1303	1160	89.0
Wrexham LA	1653	1123	67.9	1636	1176	71.9	1674	1340	80.0	1558	1308	84.0
<b>Health Board Total</b>	<b>8255</b>	<b>5318</b>	<b>64.4</b>	<b>8038</b>	<b>5539</b>	<b>68.9</b>	<b>8166</b>	<b>6458</b>	<b>79.1</b>	<b>7932</b>	<b>6616</b>	<b>83.4</b>
<b>Cardiff and Vale University HB</b>												
Cardiff LA	4617	3029	65.6	4632	3095	66.8	4623	3303	71.4	4396	3284	74.7
Vale of Glamorgan LA	1745	1216	69.7	1703	1198	70.3	1719	1354	78.8	1643	1316	80.1
<b>Health Board Total</b>	<b>6362</b>	<b>4245</b>	<b>66.7</b>	<b>6335</b>	<b>4293</b>	<b>67.8</b>	<b>6342</b>	<b>4657</b>	<b>73.4</b>	<b>6039</b>	<b>4600</b>	<b>76.2</b>
<b>Cwm Taf Morgannwg University HB</b>												
Bridgend LA	1798	1389	77.3	1683	1294	76.9	1712	1443	84.3	1749	1556	89.0
Merthyr Tydfil LA	697	483	69.3	753	518	68.8	779	592	76.0	734	612	83.4
Rhondda Cynon Taf LA	3012	2266	75.2	2989	2265	75.8	2949	2370	80.4	2872	2514	87.5
<b>Health Board Total</b>	<b>5507</b>	<b>4138</b>	<b>75.1</b>	<b>5425</b>	<b>4077</b>	<b>75.2</b>	<b>5440</b>	<b>4405</b>	<b>81.0</b>	<b>5355</b>	<b>4682</b>	<b>87.4</b>
<b>Hywel Dda University HB</b>												
Carmarthenshire LA	2185	1668	76.3	2164	1681	77.7	2348	1950	83.0	2197	1900	86.5
Ceredigion LA	752	623	82.8	610	532	87.2	649	566	87.2	671	600	89.4
Pembrokeshire LA	1414	973	68.8	1366	929	68.0	1375	895	65.1	1358	1114	82.0
<b>Health Board Total</b>	<b>4351</b>	<b>3264</b>	<b>75.0</b>	<b>4140</b>	<b>3142</b>	<b>75.9</b>	<b>4372</b>	<b>3411</b>	<b>78.0</b>	<b>4226</b>	<b>3614</b>	<b>85.5</b>
<b>Powys Teaching HB</b>												
<b>Health Board Total</b>	<b>1322</b>	<b>1009</b>	<b>76.3</b>	<b>1349</b>	<b>998</b>	<b>74.0</b>	<b>1530</b>	<b>1210</b>	<b>79.1</b>	<b>1396</b>	<b>1222</b>	<b>87.5</b>
<b>Swansea Bay University HB</b>												
Neath Port Talbot LA	1686	1372	81.4	1698	1389	81.8	1685	1456	86.4	1646	1456	88.5
Swansea LA	2847	2344	82.3	2802	2376	84.8	2965	2573	86.8	2832	2521	89.0
<b>Health Board Total</b>	<b>4533</b>	<b>3716</b>	<b>82.0</b>	<b>4500</b>	<b>3765</b>	<b>83.7</b>	<b>4650</b>	<b>4029</b>	<b>86.6</b>	<b>4478</b>	<b>3977</b>	<b>88.8</b>
Unknown	26	12	46.2	27	11	40.7	41	25	61.0	31	21	67.7
<b>Wales Total</b>	<b>38004</b>	<b>26918</b>	<b>70.8</b>	<b>37372</b>	<b>26535</b>	<b>71.0</b>	<b>38320</b>	<b>29329</b>	<b>76.5</b>	<b>36681</b>	<b>30337</b>	<b>82.7</b>

<sup>1</sup> Timings of immunisation sessions vary between HBs, and uptake will increase over the next quarter as more immunisation sessions taken place.

**Table 11.** MMR, Td/IPV and MenACWY vaccine uptake in children reaching their 14<sup>th</sup> birthday between 01/09/23 and 31/08/24 and resident on 30/06/24, with breakdown of MMR1 and MMR2 coverage by sex.

Area	Resident children		Teenage 3 in 1 booster <sup>1,2</sup>						Resident girls		MMR1 (girls)		MMR2 (girls)		Resident boys		MMR1 (boys)		MMR2 (boys)	
	(n)	(n)	(%)	(n)	(%)	(n)	(%)	(n)	(%)	(n)	(n)	(%)	(n)	(%)	(n)	(n)	(%)	(n)	(%)	
<b>Aneurin Bevan University HB</b>																				
Blaenau Gwent LA	829	798	96.3	773	93.2	542	65.4	537	64.8	420	406	96.7	389	92.6	409	392	95.8	384	93.9	
Caerphilly LA	2269	2208	97.3	2161	95.2	1579	69.6	1581	69.7	1101	1064	96.6	1042	94.6	1168	1144	97.9	1119	95.8	
Monmouthshire LA	1096	1019	93.0	986	90.0	802	73.2	795	72.5	528	490	92.8	472	89.4	567	529	93.3	514	90.7	
Newport LA	2251	2093	93.0	2029	90.1	1453	64.5	1453	64.5	1112	1032	92.8	999	89.8	1139	1061	93.2	1030	90.4	
Torfaen LA	1203	1160	96.4	1119	93.0	853	70.9	850	70.7	604	586	97.0	567	93.9	599	574	95.8	552	92.2	
<b>Health Board Total</b>	<b>7648</b>	<b>7278</b>	<b>95.2</b>	<b>7068</b>	<b>92.4</b>	<b>5229</b>	<b>68.4</b>	<b>5216</b>	<b>68.2</b>	<b>3765</b>	<b>3578</b>	<b>95.0</b>	<b>3469</b>	<b>92.1</b>	<b>3882</b>	<b>3700</b>	<b>95.3</b>	<b>3599</b>	<b>92.7</b>	
<b>Betsi Cadwaladr University HB</b>																				
Anglesey LA	814	800	98.3	789	96.9	532	65.4	515	63.3	398	390	98.0	385	96.7	416	410	98.6	404	97.1	
Conwy LA	1347	1298	96.4	1272	94.4	759	56.3	767	56.9	661	637	96.4	623	94.3	685	660	96.4	648	94.6	
Denbighshire LA	1200	1144	95.3	1125	93.8	642	53.5	640	53.3	591	562	95.1	553	93.6	609	582	95.6	572	93.9	
Flintshire LA	1849	1787	96.6	1758	95.1	1343	72.6	1331	72.0	859	831	96.7	819	95.3	990	956	96.6	939	94.8	
Gwynedd LA	1392	1359	97.6	1333	95.8	957	68.8	942	67.7	643	624	97.0	614	95.5	748	735	98.3	719	96.1	
Wrexham LA	1653	1593	96.4	1564	94.6	1139	68.9	1123	67.9	809	772	95.4	756	93.4	844	821	97.3	808	95.7	
<b>Health Board Total</b>	<b>8255</b>	<b>7981</b>	<b>96.7</b>	<b>7841</b>	<b>95.0</b>	<b>5372</b>	<b>65.1</b>	<b>5318</b>	<b>64.4</b>	<b>3961</b>	<b>3816</b>	<b>96.3</b>	<b>3750</b>	<b>94.7</b>	<b>4292</b>	<b>4164</b>	<b>97.0</b>	<b>4090</b>	<b>95.3</b>	
<b>Cardiff and Vale University HB</b>																				
Cardiff LA	4617	4365	94.5	4175	90.4	3021	65.4	3029	65.6	2252	2132	94.7	2036	90.4	2365	2233	94.4	2139	90.4	
Vale of Glamorgan LA	1745	1700	97.4	1654	94.8	1216	69.7	1216	69.7	859	839	97.7	810	94.3	886	861	97.2	844	95.3	
<b>Health Board Total</b>	<b>6362</b>	<b>6065</b>	<b>95.3</b>	<b>5829</b>	<b>91.6</b>	<b>4237</b>	<b>66.6</b>	<b>4245</b>	<b>66.7</b>	<b>3111</b>	<b>2971</b>	<b>95.5</b>	<b>2846</b>	<b>91.5</b>	<b>3251</b>	<b>3094</b>	<b>95.2</b>	<b>2983</b>	<b>91.8</b>	
<b>Cwm Taf Morgannwg University HB</b>																				
Bridgend LA	1798	1761	97.9	1713	95.3	1391	77.4	1389	77.3	886	864	97.5	844	95.3	912	897	98.4	869	95.3	
Merthyr Tydfil LA	697	675	96.8	659	94.5	481	69.0	483	69.3	316	304	96.2	300	94.9	381	371	97.4	359	94.2	
Rhondda Cynon Taf LA	3012	2926	97.1	2849	94.6	2254	74.8	2266	75.2	1514	1473	97.3	1429	94.4	1498	1453	97.0	1420	94.8	
<b>Health Board Total</b>	<b>5507</b>	<b>5362</b>	<b>97.4</b>	<b>5221</b>	<b>94.8</b>	<b>4126</b>	<b>74.9</b>	<b>4138</b>	<b>75.1</b>	<b>2716</b>	<b>2641</b>	<b>97.2</b>	<b>2573</b>	<b>94.7</b>	<b>2791</b>	<b>2721</b>	<b>97.5</b>	<b>2648</b>	<b>94.9</b>	
<b>Hywel Dda University HB</b>																				
Carmarthenshire LA	2185	2107	96.4	2067	94.6	1671	76.5	1668	76.3	1044	1007	96.5	991	94.9	1141	1100	96.4	1076	94.3	
Ceredigion LA	752	729	96.9	719	95.6	628	83.5	623	82.8	381	370	97.1	367	96.3	371	359	96.8	352	94.9	
Pembrokeshire LA	1414	1361	96.3	1323	93.6	982	69.4	973	68.8	702	675	96.2	657	93.6	712	686	96.3	666	93.5	
<b>Health Board Total</b>	<b>4351</b>	<b>4197</b>	<b>96.5</b>	<b>4109</b>	<b>94.4</b>	<b>3281</b>	<b>75.4</b>	<b>3264</b>	<b>75.0</b>	<b>2127</b>	<b>2052</b>	<b>96.5</b>	<b>2015</b>	<b>94.7</b>	<b>2224</b>	<b>2145</b>	<b>96.4</b>	<b>2094</b>	<b>94.2</b>	
<b>Powys Teaching HB</b>																				
<b>Health Board Total</b>	<b>1322</b>	<b>1262</b>	<b>95.5</b>	<b>1237</b>	<b>93.6</b>	<b>1012</b>	<b>76.6</b>	<b>1009</b>	<b>76.3</b>	<b>648</b>	<b>618</b>	<b>95.4</b>	<b>607</b>	<b>93.7</b>	<b>674</b>	<b>644</b>	<b>95.5</b>	<b>630</b>	<b>93.5</b>	
<b>Swansea Bay University HB</b>																				
Neath Port Talbot LA	1686	1652	98.0	1627	96.5	1365	81.0	1372	81.4	818	799	97.7	788	96.3	867	853	98.4	839	96.8	
Swansea LA	2847	2742	96.3	2635	92.6	2327	81.7	2344	82.3	1380	1324	95.9	1268	91.9	1467	1418	96.7	1367	93.2	
<b>Health Board Total</b>	<b>4533</b>	<b>4394</b>	<b>96.9</b>	<b>4262</b>	<b>94.0</b>	<b>3692</b>	<b>81.4</b>	<b>3716</b>	<b>82.0</b>	<b>2198</b>	<b>2123</b>	<b>96.6</b>	<b>2056</b>	<b>93.5</b>	<b>2334</b>	<b>2271</b>	<b>97.3</b>	<b>2206</b>	<b>94.5</b>	
Unknown	26	22	84.6	21	80.8	12	46.2	12	46.2	17	14	82.4	14	82.4	9	8	88.9	7	77.8	
<b>Wales Total</b>	<b>38004</b>	<b>36561</b>	<b>96.2</b>	<b>35588</b>	<b>93.6</b>	<b>26961</b>	<b>70.9</b>	<b>26918</b>	<b>70.8</b>	<b>18543</b>	<b>17813</b>	<b>96.1</b>	<b>17330</b>	<b>93.5</b>	<b>19457</b>	<b>18747</b>	<b>96.4</b>	<b>18257</b>	<b>93.8</b>	

<sup>1</sup> Teenage booster dose of diphtheria, tetanus and polio (diphtheria used as proxy).

<sup>2</sup> Timings of immunisation sessions vary between HBs, and uptake will increase over the next quarter as more immunisation sessions taken place.

**Table 12.** MMR, Td/IPV and MenACWY vaccine uptake in children reaching their 15<sup>th</sup> birthday between 01/09/23 and 31/08/24 and resident on 30/06/24, with breakdown of MMR1 and MMR2 coverage by sex.

Area	Resident children		MMR1		MMR2		Teenage 3 in 1 booster <sup>1</sup>		MenACWY		Resident girls		MMR1 (girls)		MMR2 (girls)		Resident boys		MMR1 (boys)		MMR2 (boys)	
	(n)	(n)	(%)	(n)	(%)	(n)	(%)	(n)	(%)	(n)	(n)	(%)	(n)	(%)	(n)	(%)	(n)	(n)	(%)	(n)	(%)	
<b><u>Aneurin Bevan University HB</u></b>																						
Blaenau Gwent LA	808	769	95.2	748	92.6	527	65.2	524	64.9	378	357	94.4	346	91.5	430	412	95.8	402	93.5			
Caerphilly LA	2214	2140	96.7	2081	94.0	1448	65.4	1440	65.0	1076	1040	96.7	1009	93.8	1138	1100	96.7	1072	94.2			
Monmouthshire LA	1141	1015	89.0	985	86.3	738	64.7	733	64.2	559	499	89.3	484	86.6	582	516	88.7	501	86.1			
Newport LA	2209	2034	92.1	1944	88.0	1267	57.4	1270	57.5	1032	949	92.0	907	87.9	1176	1085	92.3	1037	88.2			
Torfaen LA	1186	1146	96.6	1104	93.1	749	63.2	743	62.6	553	538	97.3	513	92.8	632	608	96.2	591	93.5			
<b>Health Board Total</b>	<b>7558</b>	<b>7104</b>	<b>94.0</b>	<b>6862</b>	<b>90.8</b>	<b>4729</b>	<b>62.6</b>	<b>4710</b>	<b>62.3</b>	<b>3598</b>	<b>3383</b>	<b>94.0</b>	<b>3259</b>	<b>90.6</b>	<b>3958</b>	<b>3721</b>	<b>94.0</b>	<b>3603</b>	<b>91.0</b>			
<b><u>Betsi Cadwaladr University HB</u></b>																						
Anglesey LA	826	814	98.5	802	97.1	563	68.2	530	64.2	392	387	98.7	382	97.4	434	427	98.4	420	96.8			
Conwy LA	1248	1214	97.3	1194	95.7	793	63.5	800	64.1	618	604	97.7	593	96.0	630	610	96.8	601	95.4			
Denbighshire LA	1198	1136	94.8	1121	93.6	717	59.8	711	59.3	598	564	94.3	560	93.6	600	572	95.3	561	93.5			
Flintshire LA	1801	1732	96.2	1700	94.4	1325	73.6	1325	73.6	874	846	96.8	831	95.1	927	886	95.6	869	93.7			
Gwynedd LA	1329	1286	96.8	1270	95.6	992	74.6	997	75.0	644	627	97.4	619	96.1	685	659	96.2	651	95.0			
Wrexham LA	1636	1574	96.2	1540	94.1	1184	72.4	1176	71.9	774	743	96.0	727	93.9	862	831	96.4	813	94.3			
<b>Health Board Total</b>	<b>8038</b>	<b>7756</b>	<b>96.5</b>	<b>7627</b>	<b>94.9</b>	<b>5574</b>	<b>69.3</b>	<b>5539</b>	<b>68.9</b>	<b>3900</b>	<b>3771</b>	<b>96.7</b>	<b>3712</b>	<b>95.2</b>	<b>4138</b>	<b>3985</b>	<b>96.3</b>	<b>3915</b>	<b>94.6</b>			
<b><u>Cardiff and Vale University HB</u></b>																						
Cardiff LA	4632	4349	93.9	4178	90.2	3096	66.8	3095	66.8	2283	2155	94.4	2065	90.5	2349	2194	93.4	2113	90.0			
Vale of Glamorgan LA	1703	1645	96.6	1587	93.2	1196	70.2	1198	70.3	821	794	96.7	764	93.1	882	851	96.5	823	93.3			
<b>Health Board Total</b>	<b>6335</b>	<b>5994</b>	<b>94.6</b>	<b>5765</b>	<b>91.0</b>	<b>4292</b>	<b>67.8</b>	<b>4293</b>	<b>67.8</b>	<b>3104</b>	<b>2949</b>	<b>95.0</b>	<b>2829</b>	<b>91.1</b>	<b>3231</b>	<b>3045</b>	<b>94.2</b>	<b>2936</b>	<b>90.9</b>			
<b><u>Cwm Taf Morgannwg University HB</u></b>																						
Bridgend LA	1683	1645	97.7	1610	95.7	1298	77.1	1294	76.9	769	754	98.0	732	95.2	914	891	97.5	878	96.1			
Merthyr Tydfil LA	753	725	96.3	706	93.8	519	68.9	518	68.8	388	378	97.4	368	94.8	365	347	95.1	338	92.6			
Rhondda Cynon Taf LA	2989	2914	97.5	2857	95.6	2259	75.6	2265	75.8	1461	1422	97.3	1396	95.6	1528	1492	97.6	1461	95.6			
<b>Health Board Total</b>	<b>5425</b>	<b>5284</b>	<b>97.4</b>	<b>5173</b>	<b>95.4</b>	<b>4076</b>	<b>75.1</b>	<b>4077</b>	<b>75.2</b>	<b>2618</b>	<b>2554</b>	<b>97.6</b>	<b>2496</b>	<b>95.3</b>	<b>2807</b>	<b>2730</b>	<b>97.3</b>	<b>2677</b>	<b>95.4</b>			
<b><u>Hywel Dda University HB</u></b>																						
Cardiff LA	2164	2073	95.8	2032	93.9	1689	78.0	1681	77.7	1078	1031	95.6	1015	94.2	1086	1042	95.9	1017	93.6			
Ceredigion LA	610	590	96.7	581	95.2	532	87.2	532	87.2	308	300	97.4	294	95.5	302	290	96.0	287	95.0			
Pembrokeshire LA	1366	1303	95.4	1254	91.8	940	68.8	929	68.0	693	669	96.5	644	92.9	673	634	94.2	610	90.6			
<b>Health Board Total</b>	<b>4140</b>	<b>3966</b>	<b>95.8</b>	<b>3867</b>	<b>93.4</b>	<b>3161</b>	<b>76.4</b>	<b>3142</b>	<b>75.9</b>	<b>2079</b>	<b>2000</b>	<b>96.2</b>	<b>1953</b>	<b>93.9</b>	<b>2061</b>	<b>1966</b>	<b>95.4</b>	<b>1914</b>	<b>92.9</b>			
<b><u>Powys Teaching HB</u></b>																						
<b>Health Board Total</b>	<b>1349</b>	<b>1280</b>	<b>94.9</b>	<b>1242</b>	<b>92.1</b>	<b>1060</b>	<b>78.6</b>	<b>998</b>	<b>74.0</b>	<b>654</b>	<b>620</b>	<b>94.8</b>	<b>605</b>	<b>92.5</b>	<b>695</b>	<b>660</b>	<b>95.0</b>	<b>637</b>	<b>91.7</b>			
<b><u>Swansea Bay University HB</u></b>																						
Neath Port Talbot LA	1698	1664	98.0	1630	96.0	1388	81.7	1389	81.8	821	802	97.7	786	95.7	877	862	98.3	844	96.2			
Swansea LA	2802	2702	96.4	2607	93.0	2369	84.5	2376	84.8	1353	1301	96.2	1251	92.5	1449	1401	96.7	1356	93.6			
<b>Health Board Total</b>	<b>4500</b>	<b>4366</b>	<b>97.0</b>	<b>4237</b>	<b>94.2</b>	<b>3757</b>	<b>83.5</b>	<b>3765</b>	<b>83.7</b>	<b>2174</b>	<b>2103</b>	<b>96.7</b>	<b>2037</b>	<b>93.7</b>	<b>2326</b>	<b>2263</b>	<b>97.3</b>	<b>2200</b>	<b>94.6</b>			
Unknown	27	16	59.3	16	59.3	10	37.0	11	40.7	14	10	71.4	10	71.4	13	6	46.2	6	46.2			
<b>Wales Total</b>	<b>37372</b>	<b>35766</b>	<b>95.7</b>	<b>34789</b>	<b>93.1</b>	<b>26659</b>	<b>71.3</b>	<b>26535</b>	<b>71.0</b>	<b>18141</b>	<b>17390</b>	<b>95.9</b>	<b>16901</b>	<b>93.2</b>	<b>19229</b>	<b>18376</b>	<b>95.6</b>	<b>17888</b>	<b>93.0</b>			

<sup>1</sup> Teenage booster dose of diphtheria, tetanus and polio (diphtheria used as proxy).

**Table 13.** MMR, Td/IPV and MenACWY vaccine uptake in children reaching their 16<sup>th</sup> birthday between 01/09/23 and 31/08/24 and resident on 30/06/24, with breakdown of MMR1 and MMR2 coverage by sex.

Area	Resident children		Teenage 3 in 1 booster <sup>1</sup>						Resident girls		MMR1 (girls)		MMR2 (girls)		Resident boys		MMR1 (boys)		MMR2 (boys)	
	(n)	(n)	(%)	(n)	(%)	(n)	(%)	(n)	(%)	(n)	(%)	(n)	(%)	(n)	(%)	(n)	(%)	(n)	(%)	
<b><u>Aneurin Bevan University HB</u></b>																				
Blaenau Gwent LA	870	830	95.4	805	92.5	619	71.1	613	70.5	422	398	94.3	382	90.5	448	432	96.4	423	94.4	
Caerphilly LA	2296	2238	97.5	2189	95.3	1555	67.7	1555	67.7	1093	1069	97.8	1047	95.8	1203	1169	97.2	1142	94.9	
Monmouthshire LA	1137	1042	91.6	1015	89.3	785	69.0	791	69.6	551	505	91.7	490	88.9	586	537	91.6	525	89.6	
Newport LA	2315	2144	92.6	2054	88.7	1384	59.8	1381	59.7	1116	1038	93.0	995	89.2	1198	1105	92.2	1059	88.4	
Torfaen LA	1161	1115	96.0	1085	93.5	759	65.4	794	68.4	554	538	97.1	523	94.4	607	577	95.1	562	92.6	
<b>Health Board Total</b>	<b>7779</b>	<b>7369</b>	<b>94.7</b>	<b>7148</b>	<b>91.9</b>	<b>5102</b>	<b>65.6</b>	<b>5134</b>	<b>66.0</b>	<b>3736</b>	<b>3548</b>	<b>95.0</b>	<b>3437</b>	<b>92.0</b>	<b>4042</b>	<b>3820</b>	<b>94.5</b>	<b>3711</b>	<b>91.8</b>	
<b><u>Betsi Cadwaladr University HB</u></b>																				
Anglesey LA	818	792	96.8	783	95.7	655	80.1	639	78.1	412	404	98.1	401	97.3	406	388	95.6	382	94.1	
Conwy LA	1268	1229	96.9	1207	95.2	991	78.2	992	78.2	633	614	97.0	605	95.6	634	615	97.0	602	95.0	
Denbighshire LA	1254	1183	94.3	1163	92.7	867	69.1	872	69.5	589	555	94.2	548	93.0	663	628	94.7	615	92.8	
Flintshire LA	1836	1762	96.0	1726	94.0	1474	80.3	1479	80.6	896	857	95.6	838	93.5	940	905	96.3	888	94.5	
Gwynedd LA	1316	1281	97.3	1249	94.9	1144	86.9	1136	86.3	642	625	97.4	607	94.5	674	656	97.3	642	95.3	
Wrexham LA	1674	1621	96.8	1594	95.2	1338	79.9	1340	80.0	816	798	97.8	787	96.4	857	822	95.9	806	94.0	
<b>Health Board Total</b>	<b>8166</b>	<b>7868</b>	<b>96.4</b>	<b>7722</b>	<b>94.6</b>	<b>6469</b>	<b>79.2</b>	<b>6458</b>	<b>79.1</b>	<b>3988</b>	<b>3853</b>	<b>96.6</b>	<b>3786</b>	<b>94.9</b>	<b>4174</b>	<b>4014</b>	<b>96.2</b>	<b>3935</b>	<b>94.3</b>	
<b><u>Cardiff and Vale University HB</u></b>																				
Cardiff LA	4623	4320	93.4	4129	89.3	3297	71.3	3303	71.4	2270	2141	94.3	2046	90.1	2353	2179	92.6	2083	88.5	
Vale of Glamorgan LA	1719	1662	96.7	1610	93.7	1352	78.7	1354	78.8	836	807	96.5	784	93.8	883	855	96.8	826	93.5	
<b>Health Board Total</b>	<b>6342</b>	<b>5982</b>	<b>94.3</b>	<b>5739</b>	<b>90.5</b>	<b>4649</b>	<b>73.3</b>	<b>4657</b>	<b>73.4</b>	<b>3106</b>	<b>2948</b>	<b>94.9</b>	<b>2830</b>	<b>91.1</b>	<b>3236</b>	<b>3034</b>	<b>93.8</b>	<b>2909</b>	<b>89.9</b>	
<b><u>Cwm Taf Morgannwg University HB</u></b>																				
Bridgend LA	1712	1677	98.0	1632	95.3	1444	84.3	1443	84.3	826	812	98.3	796	96.4	886	865	97.6	836	94.4	
Merthyr Tydfil LA	779	755	96.9	743	95.4	595	76.4	592	76.0	382	369	96.6	361	94.5	396	386	97.5	382	96.5	
Rhondda Cynon Taf LA	2949	2866	97.2	2819	95.6	2370	80.4	2370	80.4	1442	1404	97.4	1381	95.8	1503	1458	97.0	1434	95.4	
<b>Health Board Total</b>	<b>5440</b>	<b>5298</b>	<b>97.4</b>	<b>5194</b>	<b>95.5</b>	<b>4409</b>	<b>81.0</b>	<b>4405</b>	<b>81.0</b>	<b>2650</b>	<b>2585</b>	<b>97.5</b>	<b>2538</b>	<b>95.8</b>	<b>2785</b>	<b>2709</b>	<b>97.3</b>	<b>2652</b>	<b>95.2</b>	
<b><u>Hywel Dda University HB</u></b>																				
Carmarthenshire LA	2348	2241	95.4	2193	93.4	1950	83.0	1950	83.0	1159	1108	95.6	1090	94.0	1189	1133	95.3	1103	92.8	
Ceredigion LA	649	623	96.0	608	93.7	568	87.5	566	87.2	319	307	96.2	300	94.0	330	316	95.8	308	93.3	
Pembrokeshire LA	1375	1306	95.0	1252	91.1	904	65.7	895	65.1	682	652	95.6	635	93.1	693	654	94.4	617	89.0	
<b>Health Board Total</b>	<b>4372</b>	<b>4170</b>	<b>95.4</b>	<b>4053</b>	<b>92.7</b>	<b>3422</b>	<b>78.3</b>	<b>3411</b>	<b>78.0</b>	<b>2160</b>	<b>2067</b>	<b>95.7</b>	<b>2025</b>	<b>93.8</b>	<b>2212</b>	<b>2103</b>	<b>95.1</b>	<b>2028</b>	<b>91.7</b>	
<b><u>Powys Teaching HB</u></b>																				
<b>Health Board Total</b>	<b>1530</b>	<b>1463</b>	<b>95.6</b>	<b>1419</b>	<b>92.7</b>	<b>1203</b>	<b>78.6</b>	<b>1210</b>	<b>79.1</b>	<b>709</b>	<b>675</b>	<b>95.2</b>	<b>660</b>	<b>93.1</b>	<b>821</b>	<b>788</b>	<b>96.0</b>	<b>759</b>	<b>92.4</b>	
<b><u>Swansea Bay University HB</u></b>																				
Neath Port Talbot LA	1685	1649	97.9	1604	95.2	1453	86.2	1456	86.4	793	773	97.5	752	94.8	892	876	98.2	852	95.5	
Swansea LA	2965	2841	95.8	2745	92.6	2560	86.3	2573	86.8	1472	1415	96.1	1376	93.5	1493	1426	95.5	1369	91.7	
<b>Health Board Total</b>	<b>4650</b>	<b>4490</b>	<b>96.6</b>	<b>4349</b>	<b>93.5</b>	<b>4013</b>	<b>86.3</b>	<b>4029</b>	<b>86.6</b>	<b>2265</b>	<b>2188</b>	<b>96.6</b>	<b>2128</b>	<b>94.0</b>	<b>2385</b>	<b>2302</b>	<b>96.5</b>	<b>2221</b>	<b>93.1</b>	
Unknown	41	32	78.0	32	78.0	24	58.5	25	61.0	19	17	89.5	17	89.5	22	15	68.2	15	68.2	
<b>Wales Total</b>	<b>38320</b>	<b>36672</b>	<b>95.7</b>	<b>35656</b>	<b>93.0</b>	<b>29291</b>	<b>76.4</b>	<b>29329</b>	<b>76.5</b>	<b>18633</b>	<b>17881</b>	<b>96.0</b>	<b>17421</b>	<b>93.5</b>	<b>19677</b>	<b>18785</b>	<b>95.5</b>	<b>18230</b>	<b>92.6</b>	

<sup>1</sup> Teenage booster dose of diphtheria, tetanus and polio (diphtheria used as proxy).



**Table 14.** MMR, Td/IPV and MenACWY vaccine uptake in children reaching their 16<sup>th</sup> birthday between 01/04/24 and 30/06/24 and resident on 30/06/24, with breakdown of MMR1 and MMR2 coverage by sex.

Area	Resident children		Teenage 3 in 1 booster <sup>1</sup>						Resident girls		MMR1 (girls)		MMR2 (girls)		Resident boys		MMR1 (boys)		MMR2 (boys)	
	(n)	(%)	(n)	(%)	(n)	(%)	(n)	(%)	(n)	(%)	(n)	(%)	(n)	(%)	(n)	(%)	(n)	(%)		
<b><u>Aneurin Bevan University HB</u></b>																				
Blaenau Gwent LA	244	232	95.1	227	93.0	168	68.9	166	68.0	126	117	92.9	113	89.7	118	115	97.5	114	96.6	
Caerphilly LA	594	577	97.1	561	94.4	412	69.4	412	69.4	272	265	97.4	258	94.9	322	312	96.9	303	94.1	
Monmouthshire LA	305	277	90.8	271	88.9	205	67.2	205	67.2	139	127	91.4	123	88.5	166	150	90.4	148	89.2	
Newport LA	592	553	93.4	525	88.7	357	60.3	352	59.5	284	264	93.0	253	89.1	308	289	93.8	272	88.3	
Torfaen LA	296	283	95.6	277	93.6	197	66.6	210	70.9	141	135	95.7	132	93.6	155	148	95.5	145	93.5	
<b>Health Board Total</b>	<b>2031</b>	<b>1922</b>	<b>94.6</b>	<b>1861</b>	<b>91.6</b>	<b>1339</b>	<b>65.9</b>	<b>1345</b>	<b>66.2</b>	<b>962</b>	<b>908</b>	<b>94.4</b>	<b>879</b>	<b>91.4</b>	<b>1069</b>	<b>1014</b>	<b>94.9</b>	<b>982</b>	<b>91.9</b>	
<b><u>Betsi Cadwaladr University HB</u></b>																				
Anglesey LA	192	188	97.9	184	95.8	153	79.7	147	76.6	80	78	97.5	77	96.3	112	110	98.2	107	95.5	
Conwy LA	311	300	96.5	296	95.2	230	74.0	232	74.6	170	165	97.1	163	95.9	141	135	95.7	133	94.3	
Denbighshire LA	310	290	93.5	283	91.3	205	66.1	212	68.4	140	133	95.0	132	94.3	169	157	92.9	151	89.3	
Flintshire LA	456	437	95.8	431	94.5	371	81.4	373	81.8	227	217	95.6	214	94.3	229	220	96.1	217	94.8	
Gwynedd LA	317	309	97.5	304	95.9	273	86.1	272	85.8	138	134	97.1	132	95.7	179	175	97.8	172	96.1	
Wrexham LA	408	396	97.1	392	96.1	317	77.7	318	77.9	195	187	95.9	187	95.9	212	208	98.1	204	96.2	
<b>Health Board Total</b>	<b>1994</b>	<b>1920</b>	<b>96.3</b>	<b>1890</b>	<b>94.8</b>	<b>1549</b>	<b>77.7</b>	<b>1554</b>	<b>77.9</b>	<b>950</b>	<b>914</b>	<b>96.2</b>	<b>905</b>	<b>95.3</b>	<b>1042</b>	<b>1005</b>	<b>96.4</b>	<b>984</b>	<b>94.4</b>	
<b><u>Cardiff and Vale University HB</u></b>																				
Cardiff LA	1129	1045	92.6	994	88.0	751	66.5	748	66.3	561	522	93.0	497	88.6	568	523	92.1	497	87.5	
Vale of Glamorgan LA	439	419	95.4	407	92.7	331	75.4	335	76.3	228	216	94.7	211	92.5	211	203	96.2	196	92.9	
<b>Health Board Total</b>	<b>1568</b>	<b>1464</b>	<b>93.4</b>	<b>1401</b>	<b>89.3</b>	<b>1082</b>	<b>69.0</b>	<b>1083</b>	<b>69.1</b>	<b>789</b>	<b>738</b>	<b>93.5</b>	<b>708</b>	<b>89.7</b>	<b>779</b>	<b>726</b>	<b>93.2</b>	<b>693</b>	<b>89.0</b>	
<b><u>Cwm Taf Morgannwg University HB</u></b>																				
Bridgend LA	422	419	99.3	408	96.7	365	86.5	366	86.7	218	216	99.1	213	97.7	204	203	99.5	195	95.6	
Merthyr Tydfil LA	203	195	96.1	192	94.6	152	74.9	152	74.9	104	98	94.2	97	93.3	98	97	99.0	95	96.9	
Rhondda Cynon Taf LA	724	706	97.5	695	96.0	576	79.6	578	79.8	344	336	97.7	326	94.8	379	369	97.4	368	97.1	
<b>Health Board Total</b>	<b>1349</b>	<b>1320</b>	<b>97.9</b>	<b>1295</b>	<b>96.0</b>	<b>1093</b>	<b>81.0</b>	<b>1096</b>	<b>81.2</b>	<b>666</b>	<b>650</b>	<b>97.6</b>	<b>636</b>	<b>95.5</b>	<b>681</b>	<b>669</b>	<b>98.2</b>	<b>658</b>	<b>96.6</b>	
<b><u>Hywel Dda University HB</u></b>																				
Carmarthenshire LA	558	530	95.0	518	92.8	447	80.1	448	80.3	265	250	94.3	245	92.5	293	280	95.6	273	93.2	
Ceredigion LA	155	150	96.8	145	93.5	140	90.3	139	89.7	82	79	96.3	77	93.9	73	71	97.3	68	93.2	
Pembrokeshire LA	348	329	94.5	313	89.9	224	64.4	225	64.7	162	156	96.3	152	93.8	186	173	93.0	161	86.6	
<b>Health Board Total</b>	<b>1061</b>	<b>1009</b>	<b>95.1</b>	<b>976</b>	<b>92.0</b>	<b>811</b>	<b>76.4</b>	<b>812</b>	<b>76.5</b>	<b>509</b>	<b>485</b>	<b>95.3</b>	<b>474</b>	<b>93.1</b>	<b>552</b>	<b>524</b>	<b>94.9</b>	<b>502</b>	<b>90.9</b>	
<b><u>Powys Teaching HB</u></b>																				
<b>Health Board Total</b>	<b>402</b>	<b>383</b>	<b>95.3</b>	<b>367</b>	<b>91.3</b>	<b>312</b>	<b>77.6</b>	<b>314</b>	<b>78.1</b>	<b>173</b>	<b>163</b>	<b>94.2</b>	<b>158</b>	<b>91.3</b>	<b>229</b>	<b>220</b>	<b>96.1</b>	<b>209</b>	<b>91.3</b>	
<b><u>Swansea Bay University HB</u></b>																				
Neath Port Talbot LA	412	402	97.6	391	94.9	345	83.7	346	84.0	189	185	97.9	180	95.2	223	217	97.3	211	94.6	
Swansea LA	762	739	97.0	722	94.8	661	86.7	661	86.7	378	369	97.6	358	94.7	384	370	96.4	364	94.8	
<b>Health Board Total</b>	<b>1174</b>	<b>1141</b>	<b>97.2</b>	<b>1113</b>	<b>94.8</b>	<b>1006</b>	<b>85.7</b>	<b>1007</b>	<b>85.8</b>	<b>567</b>	<b>554</b>	<b>97.7</b>	<b>538</b>	<b>94.9</b>	<b>607</b>	<b>587</b>	<b>96.7</b>	<b>575</b>	<b>94.7</b>	
Unknown	6	5	83.3	5	83.3	2	33.3	3	50.0	4	3	75.0	3	75.0	2	2	100.0	2	100.0	
<b>Wales Total</b>	<b>9585</b>	<b>9164</b>	<b>95.6</b>	<b>8908</b>	<b>92.9</b>	<b>7194</b>	<b>75.1</b>	<b>7214</b>	<b>75.3</b>	<b>4620</b>	<b>4415</b>	<b>95.6</b>	<b>4301</b>	<b>93.1</b>	<b>4961</b>	<b>4747</b>	<b>95.7</b>	<b>4605</b>	<b>92.8</b>	

<sup>1</sup> Teenage booster dose of diphtheria, tetanus and polio (diphtheria used as proxy).

**Table 15.** Uptake of BCG immunisation in children reaching their 1<sup>st</sup>, 2<sup>nd</sup>, 5<sup>th</sup> and 16<sup>th</sup> birthdays 01/04/24 and 30/06/24 and resident on 30/06/24.<sup>1</sup>

Area	1 yr			2 yrs			5 yrs			16 yrs		
	Resident children	BCG Immunised	(%)	Resident children	BCG Immunised	(%)	Resident children	BCG Immunised	(%)	Resident children	BCG Immunised	(%)
<b><u>Aneurin Bevan University HB</u></b>	(n)	(n)	(%)	(n)	(n)	(%)	(n)	(n)	(%)	(n)	(n)	(%)
Blaenau Gwent LA	162	3	1.9	167	3	1.8	208	5	2.4	244	4	1.6
Caerphilly LA	368	11	3.0	403	17	4.2	434	14	3.2	594	15	2.5
Monmouthshire LA	201	11	5.5	198	7	3.5	208	10	4.8	305	11	3.6
Newport LA	446	104	23.3	490	96	19.6	535	107	20.0	592	96	16.2
Torfaen LA	223	15	6.7	242	6	2.5	271	11	4.1	296	9	3.0
<b>Health Board Total</b>	<b>1400</b>	<b>144</b>	<b>10.3</b>	<b>1500</b>	<b>129</b>	<b>8.6</b>	<b>1656</b>	<b>147</b>	<b>8.9</b>	<b>2031</b>	<b>135</b>	<b>6.6</b>
<b><u>Betsi Cadwaladr University HB</u></b>												
Anglesey LA	116	1	0.9	129	1	0.8	139	6	4.3	192	3	1.6
Conwy LA	193	7	3.6	230	6	2.6	278	16	5.8	311	21	6.8
Denbighshire LA	184	9	4.9	213	10	4.7	276	17	6.2	310	22	7.1
Flintshire LA	320	15	4.7	322	23	7.1	367	28	7.6	456	23	5.0
Gwynedd LA	240	9	3.8	246	6	2.4	286	10	3.5	317	15	4.7
Wrexham LA	312	29	9.3	326	29	8.9	321	34	10.6	408	39	9.6
<b>Health Board Total</b>	<b>1365</b>	<b>70</b>	<b>5.1</b>	<b>1466</b>	<b>75</b>	<b>5.1</b>	<b>1667</b>	<b>111</b>	<b>6.7</b>	<b>1994</b>	<b>123</b>	<b>6.2</b>
<b><u>Cardiff and Vale University HB</u></b>												
Cardiff LA	829	214	25.8	859	238	27.7	939	90	9.6	1129	209	18.5
Vale of Glamorgan LA	307	42	13.7	309	23	7.4	321	8	2.5	439	21	4.8
<b>Health Board Total</b>	<b>1136</b>	<b>256</b>	<b>22.5</b>	<b>1168</b>	<b>261</b>	<b>22.3</b>	<b>1260</b>	<b>98</b>	<b>7.8</b>	<b>1568</b>	<b>230</b>	<b>14.7</b>
<b><u>Cwm Taf Morgannwg Univeristy HB</u></b>												
Bridgend LA	344	14	4.1	340	14	4.1	348	20	5.7	422	9	2.1
Merthyr Tydfil LA	130	8	6.2	140	8	5.7	162	10	6.2	203	13	6.4
Rhondda Cynon Taf LA	540	23	4.3	580	17	2.9	633	30	4.7	724	19	2.6
<b>Health Board Total</b>	<b>1014</b>	<b>45</b>	<b>4.4</b>	<b>1060</b>	<b>39</b>	<b>3.7</b>	<b>1143</b>	<b>60</b>	<b>5.2</b>	<b>1349</b>	<b>41</b>	<b>3.0</b>
<b><u>Hywel Dda University HB</u></b>												
Carmarthenshire LA	420	12	2.9	421	12	2.9	451	17	3.8	558	20	3.6
Ceredigion LA	123	7	5.7	129	6	4.7	151	11	7.3	155	7	4.5
Pembrokeshire LA	261	12	4.6	263	3	1.1	276	16	5.8	348	15	4.3
<b>Health Board Total</b>	<b>804</b>	<b>31</b>	<b>3.9</b>	<b>813</b>	<b>21</b>	<b>2.6</b>	<b>878</b>	<b>44</b>	<b>5.0</b>	<b>1061</b>	<b>42</b>	<b>4.0</b>
<b><u>Powys Teaching Health Board</u></b>												
<b>Health Board Total</b>	<b>240</b>	<b>6</b>	<b>2.5</b>	<b>234</b>	<b>3</b>	<b>1.3</b>	<b>293</b>	<b>8</b>	<b>2.7</b>	<b>402</b>	<b>18</b>	<b>4.5</b>
<b><u>Swansea Bay University HB</u></b>												
Neath Port Talbot LA	327	16	4.9	313	13	4.2	332	19	5.7	412	16	3.9
Swansea LA	536	81	15.1	473	78	16.5	606	85	14.0	762	77	10.1
<b>Health Board Total</b>	<b>863</b>	<b>97</b>	<b>11.2</b>	<b>786</b>	<b>91</b>	<b>11.6</b>	<b>938</b>	<b>104</b>	<b>11.1</b>	<b>1174</b>	<b>93</b>	<b>7.9</b>
Unknown	14	2	0.0	5	1	20.0	0	0	0.0	6	0	0.0
<b>Wales Total</b>	<b>6836</b>	<b>651</b>	<b>9.5</b>	<b>7032</b>	<b>620</b>	<b>8.8</b>	<b>7835</b>	<b>572</b>	<b>7.3</b>	<b>9585</b>	<b>682</b>	<b>7.1</b>

<sup>1</sup> Data reflects immunisations given and recorded on the NCCHD (following notifications to local Child Health Administration Offices), may be subject to under-reporting. BCG is not a routinely scheduled immunisation.

**Table 16.** Uptake of hepatitis B immunisation in children, reaching their 1<sup>st</sup>, 2<sup>nd</sup>, and 5<sup>th</sup> birthdays during between 01/04/24 and 30/06/24 and resident on 30/06/24, and percentage who are recorded as completing doses 1 to 4.<sup>1</sup>

Area	1yr					2yrs						5yrs					
	Resident children	Babies at risk of perinatal infection	1 dose	2 doses	3 doses	Resident children	Babies at risk of perinatal infection	1 dose	2 doses	3 doses	4 doses	Resident children	Babies at risk of perinatal infection	1 dose	2 dose	3 doses	4 doses
	(n)	(n)	(%)	(%)	(%)	(n)	(n)	(%)	(%)	(%)	(%)	(n)	(n)	(%)	(%)	(%)	(%)
Aneurin Bevan UHB	1400	0	-	-	-	0	0	-	-	-	-	1656	1	100.0	100.0	100.0	100.0
Betsi Cadwaladr UHB	1365	0	-	-	-	0	2	100.0	100.0	100.0	100.0	1667	1	100.0	100.0	100.0	100.0
Cardiff and Vale UHB	1136	1	100.0	-	-	1	4	100.0	100.0	100.0	-	1260	1	100.0	100.0	100.0	100.0
Cwm Taf Morgannwg UHB	1014	0	-	-	-	0	0	-	-	-	-	1143	0	-	-	-	-
Hywel Dda UHB	804	0	-	-	-	0	0	-	-	-	-	878	0	-	-	-	-
Powys Teaching HB	240	0	-	-	-	0	0	-	-	-	-	293	0	-	-	-	-
Swansea Bay UHB	863	0	-	-	-	0	0	-	-	-	-	938	0	-	-	-	-
Unknown	14	1	100.0	100.0	100.0	1	0	-	-	-	-	0	0	-	-	-	-
<b>Wales Total</b>	<b>6836</b>	<b>2</b>	<b>100.0</b>	<b>50.0</b>	<b>50.0</b>	<b>2</b>	<b>6</b>	<b>100.0</b>	<b>100.0</b>	<b>100.0</b>	<b>33.3</b>	<b>7835</b>	<b>3</b>	<b>100.0</b>	<b>100.0</b>	<b>100.0</b>	<b>100.0</b>

<sup>1</sup>Data reflects immunisations given and recorded on the Public Health Wales case and incident management system (Tarian) of babies born to hepatitis B positive mothers. One and two year olds in this table would have been eligible for the new Hepatitis B containing "6 in 1" vaccine as part of the routine childhood immunisation schedule. The doses here for one and two year olds refer to the monovalent dose given at birth (dose 1), monovalent dose given at one month (dose 2) and dose due at two months (dose 3, now part of the "6 in 1" vaccine). Dose four for two year olds refers to the monovalent dose due at one year of age.