



Mae Brechu yn achub bywydau
Vaccination saves lives



GIG
CYMRU
NHS
WALES

Iechyd Cyhoeddus
Cymru
Public Health
Wales

Quarterly COVER report

July – September 2025

Public Health Wales

Vaccine Preventable Disease Programme



Vaccine Uptake in Children in Wales July to September 2025

COVER 156: Wales November 2025

Key points

- For children at one year of age, uptake of the “6 in 1” vaccine and two doses of MenB remains below 95%. Uptake of primary pneumococcal conjugate vaccination (PCV) was 94.7%. Uptake of two doses of rotavirus vaccine was 90.9%.
- Uptake of a complete three-dose course of MenB vaccine in two-year-olds was 92.7% this quarter.
- Uptake of the first dose of MMR vaccine in two-year-old children was 92.9% this quarter. Uptake of the second dose in four-year-old children was 85.7%.
- The proportion of children up to date with all routine immunisations by four years of age was 84.3% this quarter and was 88.0% in five-year-olds.
- School-based vaccination sessions for teenagers have now concluded for the 2024-25 academic year. In September 2023, the HPV vaccination programme changed from a two dose to a one-dose-only schedule. Uptake of one dose of HPV vaccine in 2024-25 school year 8 children was 70.9%.
- Coverage of one dose of HPV vaccine in 2024-25 school year 9 (13–14-year-olds) was 75.5%. Coverage of one dose of HPV vaccine in 2024-25 school year 10 (14–15-year-olds) was 74.9%.
- Uptake of routine MenACWY vaccine in the 2024-25 school year 9 cohort was 72.5%. Coverage of the MenACWY vaccine in the 2024-25 school year 10 cohort was 75.6%.
- Uptake of the Td/IPV teenage booster in the 2024-25 school year 9 cohort was 72.6%. Coverage of the Td/IPV teenage booster in the 2024-25 school year 10 was 75.6%.
- Coverage of one dose of MMR vaccine in the 2024-25 school year 10 (age 14-15 years) was 96.0%, coverage of two doses was 93.6%.
- Coverage of one dose of MMR vaccine in the 2024-25 school year 11 (age 15-16 years) was 95.4%, coverage of two doses was 92.9%.

Background

These results are for children living in Wales in September 2025 and reaching their first, second, fourth, fifth and 16th birthdays during the quarter 01/07/2025 to 30/09/2025. Uptake of key immunisations in older children, which are mainly provided through school-based programmes in all areas other than Cardiff and Vale University Health Board, are presented in school year cohorts (children reaching their 13th, 14th, 15th and 16th birthdays between 01/09/2024 and 31/08/2025). BCG immunisation uptake data are also presented here for children vaccinated selectively following risk assessment. Coverage of neonatal hepatitis B immunisation in infants at risk is also presented, using data from the Public Health Wales Tarian case and incident management system following a move from the Public Health Wales Neonatal Hepatitis B database.



Findings

1. Uptake of all three doses of the combined “6 in 1” DTaP/IPV/Hib/HepB¹ vaccine, scheduled at two, three and four months of age, in children reaching their first birthday was 93.0% this quarter, compared to 93.5% last quarter. Uptake ranged by HB from 91.0% (Cardiff and Vale) to 94.9% (Cwm Taf Morgannwg) and by LA from 86.8% (Torfaen) to 95.9% (Bridgend). None of the seven HBs and three of the 22 LA areas achieved the target 95% uptake (Figures 2, 3 and 6, Tables 2 and 3).
2. Uptake of primary pneumococcal conjugate vaccination (PCV) in children reaching their first birthday decreased to 94.7% this quarter, compared to 95.5% last quarter. Uptake ranged by HB from 93.2% (Cardiff and Vale) to 96.4% (Cwm Taf Morgannwg) and by LA from 90.8% (Torfaen) to 97.5% (Bridgend). Three of the seven HBs and eight of the 22 LA areas achieved the target 95% uptake (Figures 2 and 3, Tables 2 and 3).
3. Uptake of two doses of MenB vaccine, scheduled at two and four months of age, in children reaching their first birthday was 92.9% this quarter. Uptake in HBs ranged from 89.7% (Cardiff and Vale) to 95.3% (Cwm Taf Morgannwg) and ranged by LA from 88.6% (Torfaen) to 96.4% (Anglesey) (Figure 3, Tables 2 and 3).
4. Uptake of two doses of rotavirus vaccine in children reaching their first birthday was 90.9% this quarter from compared to 91.4% last quarter. Uptake in HBs ranged from 89.1% (Cardiff and Vale) to 93.2% (Cwm Taf Morgannwg) and ranged by LA from 84.6% (Torfaen) to 95.0% (Anglesey) (Figures 2 and 3, Tables 2 and 3).
5. Uptake of the first dose of MMR² in children reaching their second birthday (scheduled at 12 to 13 months of age) was 92.9% this quarter. Uptake ranged by HB from 89.9 (Cardiff and Vale) to 95.3% (Cwm Taf Morgannwg) and by LA area from 89.5% (Cardiff) to 97.2% (Blaenau Gwent). One of the seven HBs and four of the 22 LA areas achieved the target 95% uptake (Figures 2, 3 and 7, Tables 2 and 4).
6. Uptake of the complete three dose course of MenB vaccine in children reaching their second birthday was 92.7%. Uptake ranged by HB from 89.6% (Cardiff and Vale) to 94.8% (Cwm Taf Morgannwg) and by LA from 89.0% (Cardiff) to 96.6% (Blaenau Gwent). None of the seven HBs and four of the 22 LA areas achieved the target 95% uptake (Figures 2 and 3, Tables 2 and 4).
7. Uptake of the final dose of Pneumococcal Conjugate Vaccine (PCVf), scheduled at 12 to 13 months of age) in children reaching their second birthday was 92.8%. Uptake ranged by HB from 89.4% (Cardiff and Vale) to 95.1% (Cwm Taf Morgannwg) and ranged by LA from 88.9% (Cardiff) to 97.2% (Blaenau Gwent). One HB achieved the target uptake, and four LA areas achieved an uptake of 95% or over (Figure 3, Tables 2 and 4).
8. Uptake of the Hib/MenC booster (given at 12 to 13 months of age) in children reaching two years of age was 92.7% this quarter. From 1st July 2025, the offer of Hib/MenC booster was removed from the routine childhood immunisation schedule [1]. Children who turn one year of age on or before 30th June 2025, and present late to the one-year vaccination appointment after 1st July 2025, will instead be offered an additional fourth dose of the DTaP/IPV/Hib/HepB (hexavalent) vaccine [1]. In this report, uptake of Hib/MenC booster will also include a small number of those with no recorded Hib/MenC booster but who received the additional hexavalent vaccine from 1st July 2025. Uptake ranged by HB from 89.7% (Cardiff and Vale) to 94.9% (Cwm Taf Morgannwg) and ranged by LA from 89.3% (Cardiff) to 97.2% (Blaenau Gwent). No HB achieved the target uptake and three LA areas achieved uptakes in excess of 95% (Figures 1, 2 and 3, Tables 2 and 4).

¹ DTaP/IPV/Hib/HepB vaccine protects against Diphtheria, Tetanus, Pertussis (Whooping Cough), Polio, Hib and Hep B infection.

² MMR protects against measles, mumps and rubella infections.

³ DTaP/IPV (and dTaP/IPV) vaccines boost protection against Diphtheria, Tetanus, Pertussis and Polio infection before school entry.



9. In children reaching four years of age this quarter (Table 5), uptake of:
- The “4 in 1” DTaP/IPV³ pre-school booster was 85.4%
 - The Hib/MenC booster was 94.1%
 - Two doses of MMR was 85.7%

The proportion of children who were up to date with all these routine immunisations at four years of age was 84.3%. This ranged by HB from 80.4% (Aneurin Bevan) to 87.7% (Cwm Taf Morgannwg) and by LA from 73.5% (Newport) to 89.2% (Bridgend) (Figures 4 and 5, Tables 1, 2 and 5).

10. The proportion of children who were up to date with routine immunisations by their fifth birthday was 88.0%, compared to 87.7% last quarter. This ranged by HB from 83.6% (Cardiff and Vale) to 91.9% (Cwm Taf Morgannwg) (Table 6).
11. In children reaching five years of age this quarter, coverage of one dose of MMR was 94.9%. Coverage of two doses of MMR was 89.8%. Coverage of two doses of MMR ranged by HB from 85.7% (Cardiff and Vale) to 93.4% (Cwm Taff Morgannwg) and by LA from 84.4% (Newport) to 95.8% (Bridgend) (Figures 1, 2, 3 and 8, Tables 2, 6 and 7).
12. Uptake of the “4 in 1” DTaP/IPV³ pre-school booster in children reaching their fifth birthday was 89.4% this quarter, consistent with last quarter, ranging by HB from 85.4% (Cardiff and Vale) to 93.0% (Cwm Taf Morgannwg) and by LA from 84.4% (Newport) to 94.8% (Bridgend). No HBs nor LAs achieved the 95% uptake target (Figure 3 and 9, Tables 2, 6 and 7).
13. From September 2023 the HPV vaccination programme changed from a two dose to a one-dose-only schedule following a Joint Committee on Vaccination and Immunisation (JCVI) recommendation. Immunocompetent adolescents who have received one dose of HPV vaccine are considered fully vaccinated against HPV [2]. Uptake of one dose of HPV vaccine for children in the 2024-25 school year 8 cohort (turning 13 years of age during 01/09/24 to 31/08/25) was 70.9% (74.1% in girls and 67.9% in boys) (Tables 8a and 9).
14. Coverage of one dose of HPV vaccine in the 2024-25 school year 9 cohort was 75.5% (78.0% in girls and 73.1% in boys) (Tables 8b and 9).
15. Coverage of one dose of HPV vaccine in the 2024-25 school year 10 cohort (reaching their 15th birthday during 01/09/24 to 31/08/25) was 74.9% (77.9% in girls and 72.1% in boys) (Tables 8c and 9).
16. Uptake of the MenACWY vaccine in the 2024-25 routine school year 9 cohort was 72.5% (73.3% in girls and 71.7% in boys) (Tables 10a, 11 and 12).
17. Uptake of the MenACWY vaccine in the 2024-25 routine school year 10 cohort was 75.6% (76.6% in girls and 74.6% in boys) (Tables 10b, 11 and 13).
18. Uptake of the MenACWY vaccine in the 2024-25 routine school year 11 cohort was 73.3% (75.2% in girls and 71.6% in boys) (Tables 10c, 11 and 14).
19. Uptake of the Td/IPV⁴ teenage booster in the 2024-25 school year 9 (children reaching 14 years of age) was 72.6%. Coverage of two doses of MMR in this year group was 93.3% and coverage of one dose was 96.1%. Coverage of two doses of MMR vaccine ranged by HB from 90.8% (Cardiff and Vale) to 95.0% (Betsi Cadwaladr). Coverage of a full course of immunisation against rubella (two doses of MMR) in 14-year-old girls in this school year group was 93.4% (Table 12).
20. Coverage of the Td/IPV teenage booster in the 2024-25 school year 10 (children reaching 15 years of age) was 75.6%. Coverage ranged by HB from 70.6% (Aneurin Bevan) to 84.2%

³ DTaP/IPV (and dTaP/IPV) vaccines boost protection against Diphtheria, Tetanus, Pertussis and Polio infection before school entry.

⁴Td/IPV boosts protection against Diphtheria, Tetanus and Polio infection before entering adulthood.



(Swansea Bay). Coverage of two doses of MMR in this year group was 93.6% and coverage of one dose was 96.0%. Coverage of two doses of MMR vaccine ranged by HB from 91.1% (Cardiff and Vale) to 95.2% (Cwm Taf Morgannwg). Coverage of a full course of immunisation against rubella (two doses of MMR) in 15-year-old girls in this school year group was 93.5% (Table 13).

- 21.** Coverage of the Td/IPV teenage booster in the 2024-25 school year 11 (children reaching 16 years of age) was 73.6%. Coverage ranged by HB from 63.0% (Aneurin Bevan) to 83.7% (Swansea Bay). Coverage of two doses of MMR in this year group was 92.9% and coverage of one dose was 95.4%. Coverage of two doses of MMR vaccine ranged by HB from 89.9% (Cardiff and Vale) to 95.4% (Cwm Taf Morgannwg). Coverage of a full course of immunisation against rubella (two doses of MMR) in 16-year-old girls in this school year group was 93.0% (Table 14).
- 22.** Coverage of two doses of MMR in children reaching 16 years of age this quarter (between 1st July 2025 and 30th September 2025) was 92.9%, whilst coverage of one dose of MMR was 95.4%. Coverage of a full course of immunisation against rubella (two doses of MMR) in 16-year-old girls was 92.7%. National coverage of the Td/IPV teenage booster in children reaching 16 years of age this quarter was 73.1% (Figures 1, 2 and 3, Tables 2 and 15).
- 23.** Uptake of BCG immunisation is presented in Table 16. These data are based on BCG immunisations recorded in the National Community Child Health Database. BCG immunisation has been received by 10.9%, 9.4%, 9.5% and 7.9% of children reaching their first, second, fifth and 16th birthdays (respectively) during quarter three of 2025. This quarter, Cardiff and Vale UHB had the highest proportion of children given BCG by one year of age (24.5%), two years of age (23.2%), five years of age (23.3%) and sixteen years of age (16.9%).
- 24.** Uptake data for hepatitis B immunisation in children who were at risk of perinatal infection, extracted from the Public Health Wales Tarian Database, are presented in Table 17. This quarter, uptake of three doses of hepatitis B vaccine at their first birthday was 100%, uptake of four doses was 87.5% at their second birthday, and uptake of four doses at their fifth birthday was 100%. Proportions should be interpreted with caution as small numbers of babies require an enhanced course of hepatitis B immunisation.



Comment

For the July to September 2025 quarter, uptake of all immunisations in infants by their first birthday decreased slightly. Uptake of the complete three-dose course of “6 in 1” vaccine and two doses of MenB vaccine remained below 95% for the seventh consecutive quarter. Uptake of three doses of “6 in 1” vaccine at one year of age is the lowest reported since 2004 with decreases seen across most health board areas and no areas reaching 95%. Uptake of two doses of rotavirus vaccine was 90.9%, which is the lowest level of uptake observed since 2015. Uptake of PCV primary vaccination has fallen below 95% for the first time since 2008.

Uptake of vaccinations at two years has remained broadly stable compared to the previous quarter. Coverage of one dose of MMR at two years has remained stable at 92.9%, following a downward trend seen since 2013. Uptake of the MenB and Hib/MenC Booster vaccines were the lowest of all immunisations reported on in this age group, at 92.7%.

The proportion of children who were up to date with their routine immunisations by four years remained stable this quarter and there was wide variation by health board. Uptake of the “4 in 1” preschool booster vaccine was the lowest of all vaccinations included in this composite measure. The proportion of children who were up to date with their routine immunisations by five years remained stable this quarter. Coverage increased by 3.5 percentage points compared to when they were reported on at four years of age. Although there have been some quarterly fluctuations, the long-term trend in coverage of two doses of MMR by five years of age had been gradually decreasing since the first quarter of 2021. Uptake this quarter remained relatively stable when compared to the previous quarter, at 89.8%.

Uptake of one dose of HPV vaccine in the 2024-25 school year 8, year 9 and 10 cohorts was 70.9%, 75.5% and 74.9%, respectively. Uptake was higher in school year 8 and year 9, and slightly lower in school year 10, compared to the equivalent groups last year (70.4%, 72.3% and 75.6%). Since 2021, there has been a declining trend in uptake of the Td/IPV teenage booster and MenACWY vaccines by 16 years of age. Uptake of MenACWY and Td/IPV is higher in the 2024-25 school year 10 cohort compared to the previous school year 10 cohort, at just over 75%. However, uptake is still lower than 2019-20 when coverage of these vaccines in the school year 10 group at the end of September 2020 was 86.0% for Td/IPV and MenACWY. Encouragingly, for adolescents reaching their 14th – 16th birthdays during the 2024-25 academic year, coverage of one dose of MMR exceeds 95% in most health board areas and coverage of a complete two dose course exceeds the measles and rubella elimination target of 95% in a number of health board areas. Coverage for HPV, MenACWY and Td/IPV has increased slightly across all age groups reported on, compared to the same cohorts in the April to June 2025 COVER report [3]. This reflects efforts by health boards to increase vaccination uptake over the summer by implementing additional vaccination sessions.

In 2024 there was a resurgence of measles across the UK, with 2,911 laboratory confirmed cases reported by the UKHSA, the highest recorded since 2012 [4]. During the second half of 2025 case numbers in England have decreased. There have been 811 confirmed cases since 1st January 2025 [4]. Importation of measles cases, following travel to measles-affected areas, and subsequent spread in the community remains a risk in Wales. A modelling report examining the potential for measles outbreaks in Wales shows that, although most areas are unlikely to sustain widespread community transmission, there are pockets of lower vaccination coverage particularly in urban centres and university settings where the spread of measles could be driven by transmission among teenagers and young adults [5]. The measles resurgence last year highlights the importance of checking vaccination status and facilitating catch-up at every opportunity, especially around school entry and alongside school vaccination sessions. Similarly, the uptake levels of teenage immunisations, such as HPV, MenACWY, and Td/IPV, while encouraging, continue to require active promotion.

In July 2025, several changes were made to the childhood vaccination schedule in Wales following updated clinical guidance [6]. Further information can be found on the Public Health



Wales website: <https://phw.nhs.wales/topics/immunisation-and-vaccines/vaccines-professionals/changes-to-the-childhood-immunisation-schedule-information-for-health-professionals/>

References

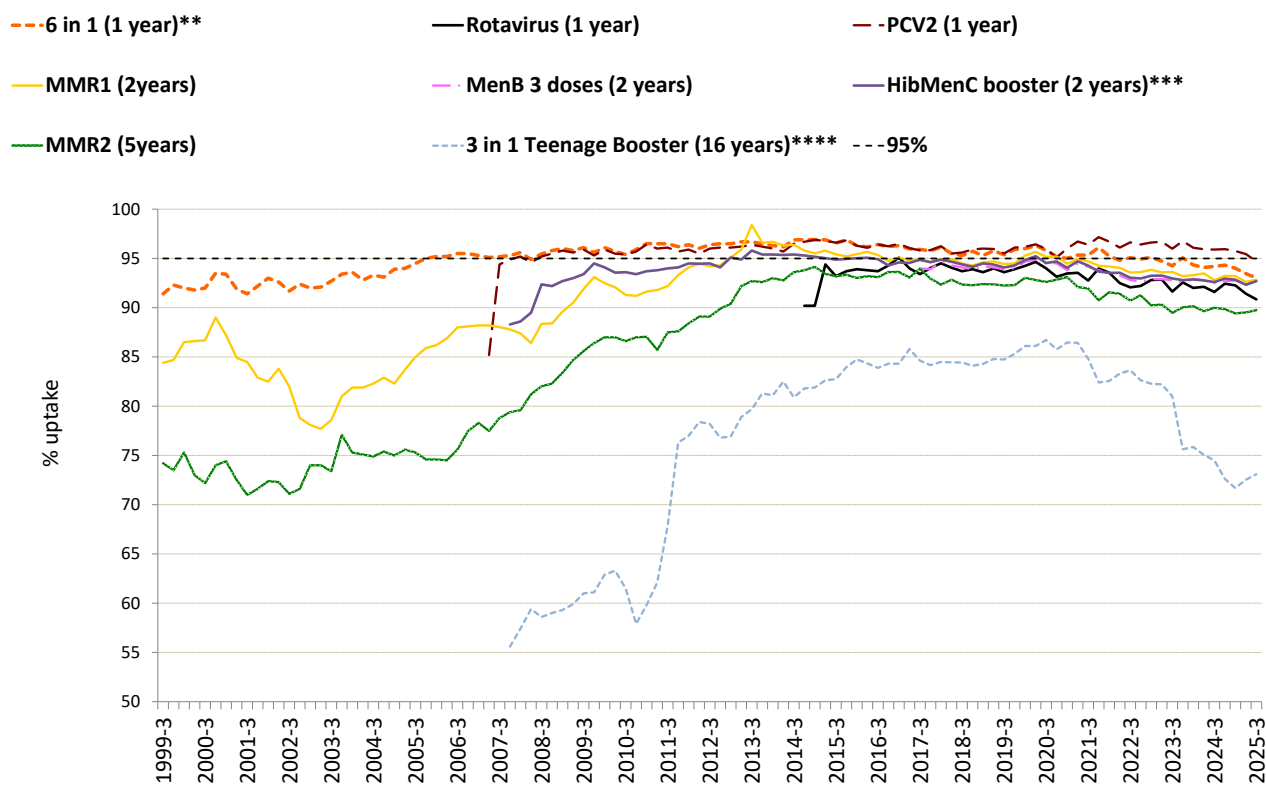
1. Welsh Health Circular- Changes to routine childhood and selective neonatal hepatitis B vaccinations. Available from: <https://www.gov.wales/childhood-vaccination-schedule-whc2025019-html>
2. Welsh Health Circular- Implementing the move to one dose of HPV vaccine in Wales. Available from: <https://www.gov.wales/sites/default/files/publications/2023-05/hpv-immunisation-programme-update.pdf>
3. Public Health Wales Health Protection Division. Vaccine uptake in Children in Wales, April to June 2025: COVER report 155, August 2025. Cardiff, Public Health Wales. Available from: [COVER - National childhood immunisation uptake data - Public Health Wales](#)
4. UK Health Security Agency. News: Latest measles statistics published (23rd October 2025). Available from: [Confirmed cases of measles in England by month, age, region and upper-tier local authority: 2025 - GOV.UK](#)
5. Public Health Wales. News: Targeted action can help prevent Measles outbreaks in Wales (22nd July 2025). Available from: [Targeted action can help prevent Measles outbreaks in Wales - Public Health Wales](#)
6. Welsh Health Circular- Changes to the routine childhood vaccination schedule and to the selective hepatitis B vaccination programme from 01 July 2025. Available from: [Changes to the routine childhood vaccination schedule \[Intranet only\]](#)

Report prepared by Public Health Wales Vaccine Preventable Disease Programme and Communicable Disease Surveillance Centre.

Data for this report was provided by Digital Health Care Wales from the National Community Child Health Database (NCCHD). The data was sourced from Community Child Health databases maintained by local Child Health Office staff in Trusts throughout Wales based on regular returns from nurses and doctors who immunise or advise on immunisation. Uptake data presented throughout are for HB resident population, not for HB GP practice populations. The maps, graphs, tables 1 and 2 are best viewed in colour.

Suggested citation for this report: Public Health Wales Health Protection Division. Vaccine uptake in Children in Wales, July to September 2025: COVER report 156, November 2025. Cardiff, Public Health Wales. For further information on this report please contact: phw.vaccines@wales.nhs.uk

Figure 1. Percentage uptake of childhood immunisations in Wales, quarter 3 1999 to quarter 3 2025*



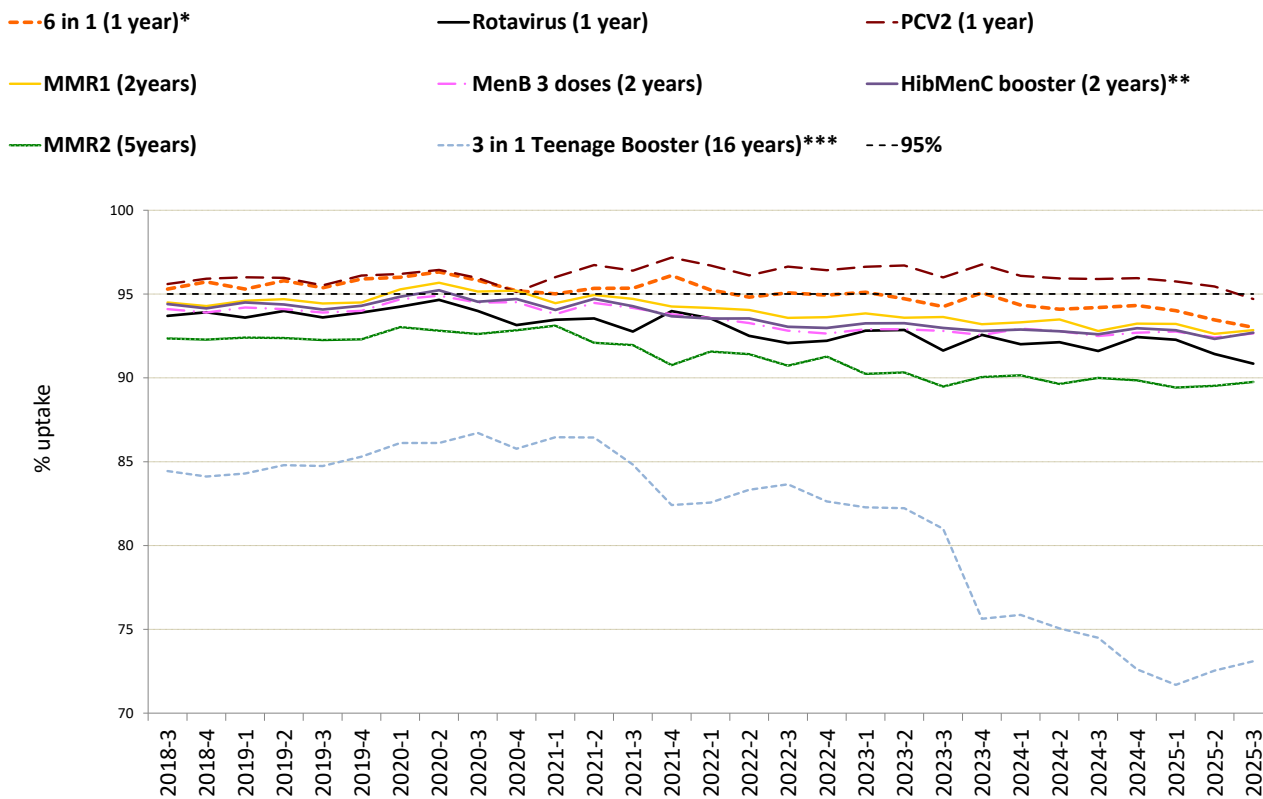
*Uptake data for quarter 3 2014 to quarter 4 2014 presented here are based on estimates calculated in August 2015, rather than published data, due to data quality problems affecting reported uptake of some immunisations in reports published during this period.

**Uptake of pertussis used as a proxy.

*** From quarter 3 2025, uptake of Hib/MenC booster will also include those with no recorded Hib/MenC booster but received the additional hexavalent vaccine from 1st July 2025.

****Teenage booster dose of diphtheria, tetanus and polio (diphtheria used as proxy).

Figure 2. Percentage uptake of childhood immunisations in Wales, quarter 3 2018 to quarter 3 2025***



* Uptake of pertussis used as proxy.

** From quarter 3 2025, uptake of Hib/MenC booster will also include those with no recorded Hib/MenC booster but received the additional hexavalent vaccine from 1st July 2025.

*** Teenage booster dose of diphtheria, tetanus and polio (diphtheria used as proxy).

****Uptake data for MMR2 at 5 years and the "3 in 1" teenage booster at 16 years from 2015 Q1 to 2018 Q3 are based on estimates calculated in February 2019, rather than published data. This is due to improvements in data quality made during early 2019.



Figure 3. Summary of uptake rates for selected immunisations in resident children reaching their 1st, 2nd, 5th and 16th birthday between 01/07/25 and 30/09/25 and resident on 30/09/25.

All Wales Summary - COVER 156

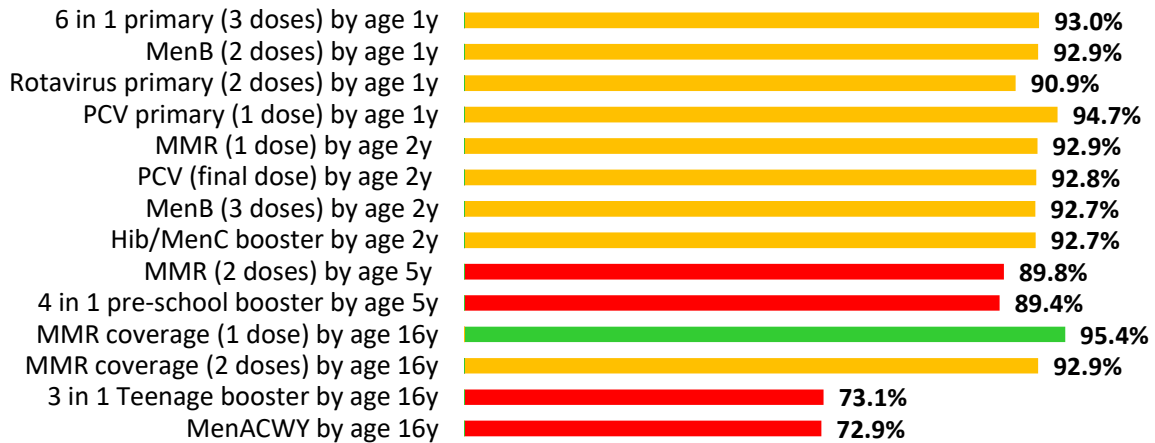


Figure 4. Percentage uptake of resident children reaching their 4th birthday between 01/07/25 and 30/09/25 and are up to date with all scheduled vaccines⁷ by health board.

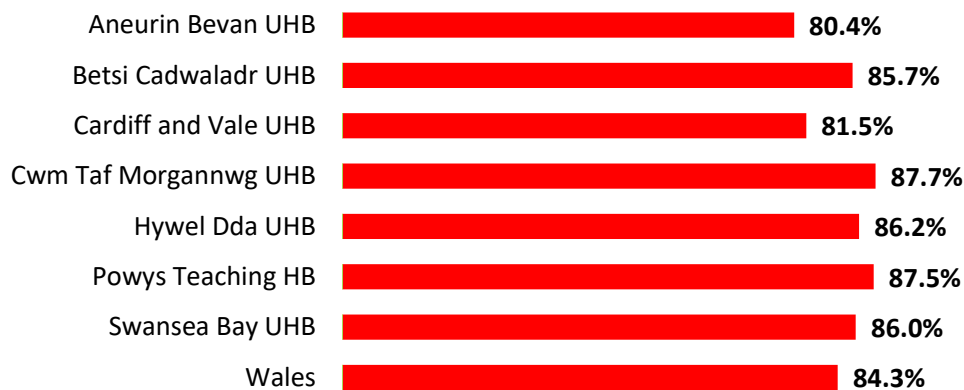
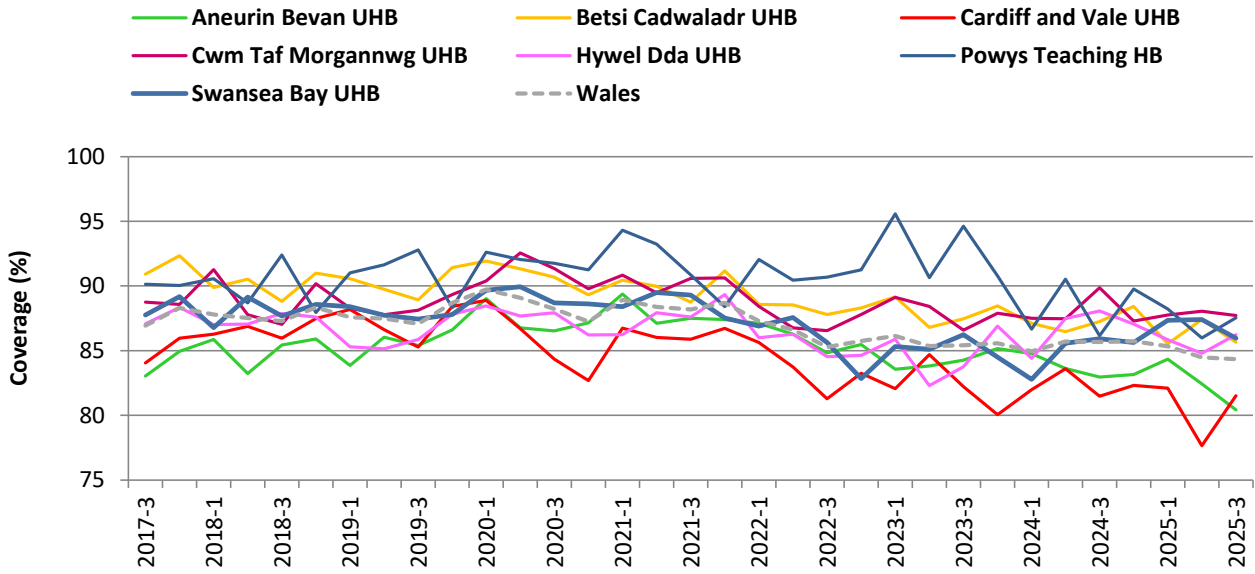


Table 1. Percentages of resident children reaching their 4th birthday during quarter 2 2024 to quarter 3 2025 who are up to date with all scheduled vaccines⁷, by Health Board.

Area	Quarter					
	2024-2	2024-3	2024-4	2025-1	2025-2	2025-3
Aneurin Bevan UHB	83.6	83.0	83.2	84.3	82.4	80.4
Betsi Cadwaladr UHB	86.5	87.3	88.4	85.5	87.4	85.7
Cardiff and Vale UHB	83.6	81.5	82.3	82.1	77.7	81.5
Cwm Taf Morgannwg UHB	87.5	89.9	87.3	87.8	88.1	87.7
Hywel Dda UHB	87.5	88.1	87.0	85.8	84.8	86.2
Powys Teaching HB	90.5	86.2	89.8	88.2	86.0	87.5
Swansea Bay UHB	85.6	85.9	85.6	87.3	87.4	86.0
Wales	85.7	85.7	85.7	85.3	84.5	84.3

⁷Completed "4 in 1" preschool booster, the Hib/MenC booster and second MMR dose by four years of age.

Figure 5. Trends in the percentages of children reaching their 4th birthday during quarter 3 2017 to quarter 3 2025, who are up to date with all scheduled vaccines⁷, by health board.



⁷Completed “4 in 1” preschool booster, the Hib/MenC booster and second MMR dose by four years of age.



Figure 6. Uptake of “6 in 1” vaccine in Welsh Local Authority areas in children reaching their 1st birthday between 01/07/25 and 30/09/25.

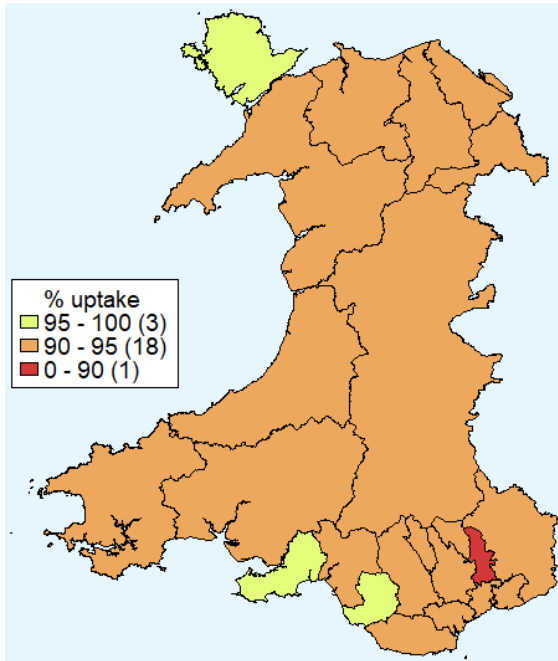


Figure 7. Uptake of at least one dose of MMR immunisation in Welsh Local Authority areas in children reaching their 2nd birthday between 01/07/25 and 30/09/25.

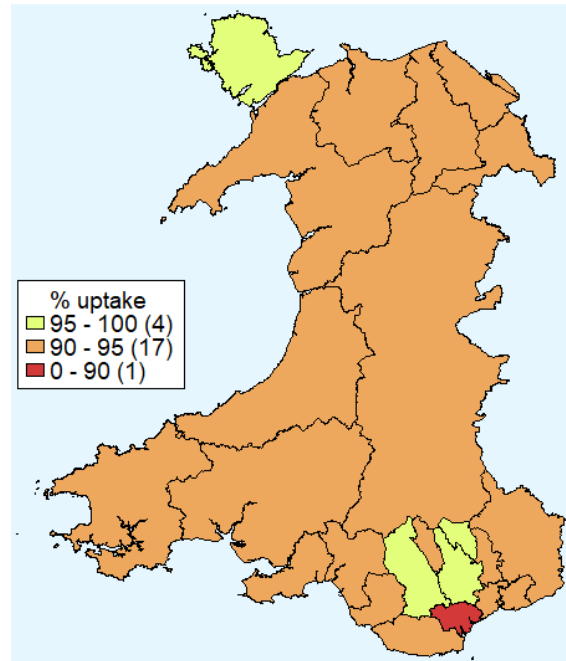


Figure 8. Uptake of two doses of MMR vaccine in Welsh Local Authority areas in children reaching their 5th birthday between 01/07/25 and 30/09/25.

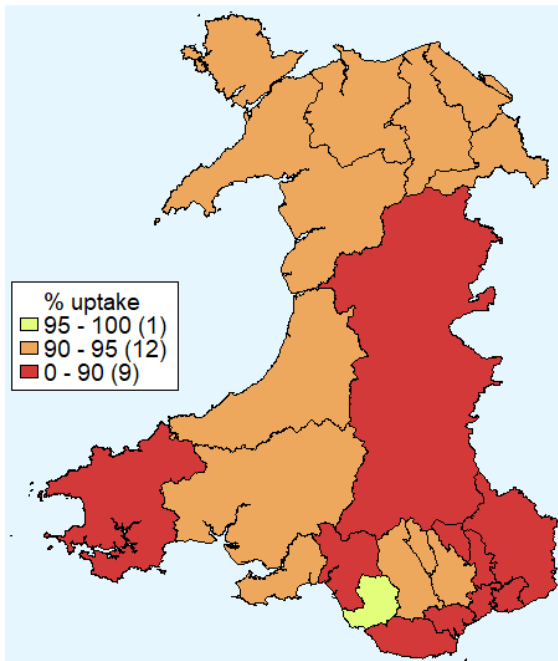


Figure 9. Uptake of “4 in 1” vaccine in Welsh Local Authority areas in children reaching their 5th birthday between 01/07/25 and 30/09/25.

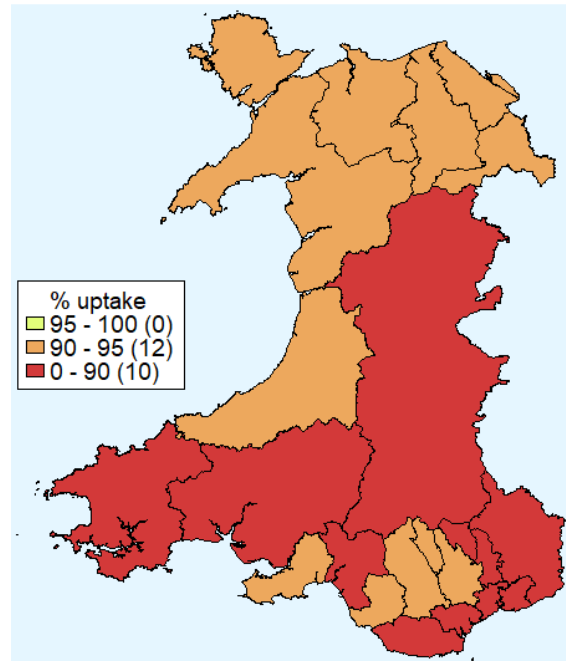


Table 2. Summary table with uptake of selected immunisations in resident children reaching their 1st, 2nd, 5th and 16th birthday between 01/07/25 and 30/09/25 and resident on 30/09/25.

Area	Age 1 year					Age 2 years					Age 4 years		Age 5 years			Age 16 years				
	Resident children (n)	6 in 1 ¹	MenB ²	PCV	Rotavirus	Resident children (n)	MMR1	PCVf ³	MenB ⁴	Hib/MenC ⁵	Resident Children (n)	Up to date in schedule ⁶	Resident children (n)	MMR2	4 in 1 ¹	Resident children (n)	MMR1	MMR2	MenACWY	3 in 1 Teenage booster ⁷
Aneurin Bevan UHB																				
Blaenau Gwent LA	159	93.7	93.7	95.0	92.5	177	97.2	97.2	96.6	97.2	183	84.7	200	89.0	88.5	200	95.5	92.5	69.0	68.5
Caerphilly LA	403	93.3	93.5	94.5	89.1	424	95.0	95.0	95.0	94.6	438	87.0	436	90.4	90.4	589	95.6	93.5	67.7	68.4
Monmouthshire LA	190	92.1	90.5	92.1	88.4	176	94.3	94.9	94.9	94.3	205	83.9	231	88.3	88.3	275	89.8	86.2	61.8	61.5
Newport LA	449	93.1	92.9	94.7	90.9	443	91.2	90.7	90.3	90.7	514	73.5	533	84.4	84.4	588	91.2	86.9	58.5	59.0
Torfaen LA	228	86.8	88.6	90.8	84.6	246	91.9	91.9	91.9	90.7	249	77.1	269	86.6	87.4	307	97.1	94.5	63.2	64.2
Health Board Total	1429	92.1	92.2	93.7	89.2	1466	93.5	93.5	93.2	93.0	1589	80.4	1669	87.4	87.5	1959	93.7	90.6	63.6	64.0
Betsi Cadwaladr UHB																				
Anglesey LA	139	95.0	96.4	96.4	95.0	144	96.5	96.5	96.5	96.5	161	88.2	169	94.1	94.7	187	98.4	97.3	68.4	71.1
Conwy LA	215	92.6	92.6	94.4	91.2	249	90.4	90.0	90.4	90.8	277	84.1	265	90.9	90.2	342	97.1	93.6	72.2	70.5
Denbighshire LA	189	92.1	92.6	93.1	87.8	212	91.5	92.0	90.6	91.5	255	83.5	243	90.5	90.5	300	95.7	95.7	63.7	64.0
Flintshire LA	336	94.0	94.0	94.9	92.3	350	93.1	93.7	93.4	92.9	369	87.0	401	91.5	91.3	491	96.5	94.9	77.8	77.4
Gwynedd LA	241	93.4	93.4	96.3	94.2	242	92.6	92.6	92.6	92.6	284	84.9	284	92.6	90.8	352	95.5	94.9	74.1	73.6
Wrexham LA	316	94.9	94.9	96.2	92.4	319	94.4	93.7	93.4	94.4	348	86.5	357	92.2	91.6	468	95.5	94.2	75.6	77.4
Health Board Total	1436	93.7	93.9	95.3	92.1	1516	92.9	92.9	92.7	92.9	1694	85.7	1719	91.9	91.3	2140	96.3	94.9	73.0	73.2
Cardiff and Vale UHB																				
Cardiff LA	937	91.1	90.0	92.7	89.0	847	89.5	88.9	89.0	89.3	990	81.4	979	84.9	84.5	1201	92.8	88.5	68.6	68.6
Vale of Glamorgan LA	301	90.4	89.0	94.7	89.4	305	91.1	90.8	91.1	90.8	346	81.8	358	88.0	88.0	440	95.0	91.4	68.9	68.9
Health Board Total	1238	91.0	89.7	93.2	89.1	1152	89.9	89.4	89.6	89.7	1336	81.5	1337	85.7	85.4	1641	93.4	89.3	68.7	68.7
Cwm Taf Morgannwg UHB																				
Bridgend LA	314	95.9	95.9	97.5	94.9	364	94.2	94.0	94.0	94.0	360	89.2	383	95.8	94.8	446	97.3	96.0	80.3	80.5
Merthyr Tydfil LA	145	93.1	94.5	94.5	91.0	153	92.8	92.2	91.5	92.2	145	82.8	138	91.3	90.6	190	97.4	94.2	70.5	71.1
Rhondda Cynon Taf LA	520	94.8	95.2	96.3	92.7	541	96.7	96.7	96.3	96.3	610	88.0	649	92.4	92.4	710	98.0	96.2	75.8	75.1
Health Board Total	979	94.9	95.3	96.4	93.2	1058	95.3	95.1	94.8	94.9	1115	87.7	1170	93.4	93.0	1346	97.7	95.8	76.5	76.3
Hywel Dda UHB																				
Cardiff LA	377	93.1	93.1	94.4	91.2	408	90.4	90.0	90.0	90.0	429	83.7	476	90.1	89.7	579	95.2	93.1	81.5	81.3
Ceredigion LA	143	93.7	93.7	93.7	90.2	153	94.8	94.1	94.8	94.1	171	88.3	131	92.4	90.8	160	95.6	93.8	85.0	85.6
Pembrokeshire LA	229	91.7	91.7	93.4	90.4	230	93.5	92.6	93.0	93.0	316	88.6	265	88.7	88.7	338	95.6	93.8	71.9	72.5
Health Board Total	749	92.8	92.8	94.0	90.8	791	92.2	91.5	91.8	91.7	916	86.2	872	90.0	89.6	1077	95.4	93.4	79.0	79.2
Powys Teaching UHB																				
Health Board Total	238	92.0	92.0	94.5	89.9	259	93.4	93.1	93.8	94.2	297	87.5	258	88.4	88.4	378	95.2	92.1	76.7	80.2
Swansea Bay UHB																				
Neath Port Talbot LA	303	92.4	93.7	95.0	89.1	329	91.8	92.4	92.1	92.4	306	85.0	339	89.7	88.2	439	98.2	95.9	82.7	82.2
Swansea LA	572	95.6	95.1	96.9	92.8	513	93.8	94.9	94.5	94.3	591	86.5	580	92.4	91.4	728	96.6	94.6	83.7	83.4
Health Board Total	875	94.5	94.6	96.2	91.5	842	93.0	93.9	93.6	93.6	897	86.0	919	91.4	90.2	1167	97.2	95.1	83.3	82.9
Unknown	8	100.0	100.0	100.0	100.0	7	85.7	85.7	85.7	85.7	3	33.3	1	100.0	100.0	3	33.3	33.3	33.3	33.3
Wales Total	6952	93.0	92.9	94.7	90.9	7091	92.9	92.8	92.7	92.7	7847	84.3	7945	89.8	89.4	9711	95.4	92.9	72.9	73.1

¹ Uptake of pertussis used as proxy.

² Uptake of two doses of meningococcal serogroup B (MenB) vaccine, scheduled at two and four months of age.

³ Children receiving the final dose of PCV.

⁴ Uptake of 3 doses of meningococcal serogroup B (MenB) vaccine, scheduled at two, four and 12-13 months of age.

⁵ Uptake of Hib/MenC booster will also include those with no recorded Hib/MenC booster but received the additional hexavalent vaccine from 1st July 2025.

⁶ Completed "4 in 1" preschool booster, the Hib/ MenC booster and second MMR dose by four years of age.

⁷ Uptake of diphtheria (reinforcing booster dose) used as proxy.

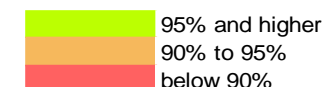


Table 3. Vaccine uptake in children reaching their 1st birthday between 01/07/25 and 30/09/25 and resident on 30/09/25.

Area	Resident children	D3		T3		P3		Po3		Hib3		HepB		MMR1		Rotavirus		PCV ¹		Men B ²	
		(n)	(%)	(n)	(%)	(n)	(%)	(n)	(%)	(n)	(%)	(n)	(%)	(n)	(%)	(n)	(%)	(n)	(%)	(n)	(%)
Aneurin Bevan University HB																					
Blaenau Gwent LA	159	149	93.7	149	93.7	149	93.7	149	93.7	149	93.7	149	93.7	0	0.0	147	92.5	151	95.0	149	93.7
Caerphilly LA	403	376	93.3	376	93.3	376	93.3	376	93.3	376	93.3	376	93.3	0	0.0	359	89.1	381	94.5	377	93.5
Monmouthshire LA	190	175	92.1	175	92.1	175	92.1	175	92.1	175	92.1	175	92.1	1	0.5	168	88.4	175	92.1	172	90.5
Newport LA	449	418	93.1	418	93.1	418	93.1	418	93.1	418	93.1	418	93.1	1	0.2	408	90.9	425	94.7	417	92.9
Torfaen LA	228	198	86.8	198	86.8	198	86.8	198	86.8	198	86.8	198	86.8	1	0.4	193	84.6	207	90.8	202	88.6
Health Board Total	1429	1316	92.1	1316	92.1	1316	92.1	1316	92.1	1316	92.1	1316	92.1	3	0.2	1275	89.2	1339	93.7	1317	92.2
Betsi Cadwaladr University HB																					
Anglesey LA	139	132	95.0	132	95.0	132	95.0	132	95.0	132	95.0	132	95.0	0	0.0	132	95.0	134	96.4	134	96.4
Conwy LA	215	199	92.6	199	92.6	199	92.6	199	92.6	199	92.6	199	92.6	0	0.0	196	91.2	203	94.4	199	92.6
Denbighshire LA	189	174	92.1	174	92.1	174	92.1	174	92.1	174	92.1	175	92.6	2	1.1	166	87.8	176	93.1	175	92.6
Flintshire LA	336	316	94.0	316	94.0	316	94.0	316	94.0	316	94.0	316	94.0	1	0.3	310	92.3	319	94.9	316	94.0
Gwynedd LA	241	225	93.4	225	93.4	225	93.4	225	93.4	225	93.4	225	93.4	1	0.4	227	94.2	232	96.3	225	93.4
Wrexham LA	316	300	94.9	300	94.9	300	94.9	300	94.9	300	94.9	300	94.9	0	0.0	292	92.4	304	96.2	300	94.9
Health Board Total	1436	1346	93.7	1346	93.7	1346	93.7	1346	93.7	1346	93.7	1347	93.8	4	0.3	1323	92.1	1368	95.3	1349	93.9
Cardiff and Vale University HB																					
Cardiff LA	937	854	91.1	854	91.1	854	91.1	854	91.1	854	91.1	855	91.2	19	2.0	834	89.0	869	92.7	843	90.0
Vale of Glamorgan LA	301	272	90.4	272	90.4	272	90.4	272	90.4	272	90.4	272	90.4	8	2.7	269	89.4	285	94.7	268	89.0
Health Board Total	1238	1126	91.0	1126	91.0	1126	91.0	1126	91.0	1126	91.0	1127	91.0	27	2.2	1103	89.1	1154	93.2	1111	89.7
Cwm Taf Morgannwg University HB																					
Bridgend LA	314	301	95.9	301	95.9	301	95.9	301	95.9	301	95.9	301	95.9	0	0.0	298	94.9	306	97.5	301	95.9
Merthyr Tydfil LA	145	135	93.1	135	93.1	135	93.1	135	93.1	135	93.1	134	92.4	1	0.7	132	91.0	137	94.5	137	94.5
Rhondda Cynon Taf LA	520	493	94.8	493	94.8	493	94.8	493	94.8	493	94.8	493	94.8	0	0.0	482	92.7	501	96.3	495	95.2
Health Board Total	979	929	94.9	929	94.9	929	94.9	929	94.9	929	94.9	928	94.8	1	0.1	912	93.2	944	96.4	933	95.3
Hywel Dda University HB																					
Carmarthenshire LA	377	351	93.1	351	93.1	351	93.1	351	93.1	351	93.1	351	93.1	1	0.3	344	91.2	356	94.4	351	93.1
Ceredigion LA	143	134	93.7	134	93.7	134	93.7	134	93.7	134	93.7	134	93.7	0	0.0	129	90.2	134	93.7	134	93.7
Pembrokeshire LA	229	210	91.7	210	91.7	210	91.7	210	91.7	210	91.7	210	91.7	1	0.4	207	90.4	214	93.4	210	91.7
Health Board Total	749	695	92.8	695	92.8	695	92.8	695	92.8	695	92.8	695	92.8	2	0.3	680	90.8	704	94.0	695	92.8
Powys Teaching HB																					
Health Board Total	238	219	92.0	219	92.0	219	92.0	219	92.0	219	92.0	219	92.0	0	0.0	214	89.9	225	94.5	219	92.0
Swansea Bay University HB																					
Neath Port Talbot LA	303	280	92.4	280	92.4	280	92.4	280	92.4	280	92.4	280	92.4	2	0.7	270	89.1	288	95.0	284	93.7
Swansea LA	572	547	95.6	547	95.6	547	95.6	547	95.6	547	95.6	547	95.6	0	0.0	531	92.8	554	96.9	544	95.1
Health Board Total	875	827	94.5	827	94.5	827	94.5	827	94.5	827	94.5	827	94.5	2	0.2	801	91.5	842	96.2	828	94.6
Unknown	8	8	100.0	8	100.0	8	100.0	8	100.0	8	100.0	7	0.0	0	0.0	8	100.0	8	100.0	8	100.0
Wales Total	6952	6466	93.0	6466	93.0	6466	93.0	6466	93.0	6466	93.0	6466	93.0	39	0.6	6316	90.9	6584	94.7	6460	92.9

¹ One dose of pneumococcal conjugate vaccine.

² Uptake of 2 doses of meningococcal serogroup B (MenB) vaccine, scheduled at two and four months of age.

Table 4. Vaccine uptake in children reaching their 2nd birthday between 01/07/25 and 30/09/25 and resident on 30/09/25.

Area	Resident children	D3		T3		P3		Po3		Hib3		HepB ¹		MMR1		PCV ¹		PCVf ²		Men B ³		HibMenC ⁴	
		(n)	(%)	(n)	(%)	(n)	(%)	(n)	(%)	(n)	(%)	(n)	(%)	(n)	(%)	(n)	(%)	(n)	(%)	(n)	(%)	(n)	(%)
<u>Aneurin Bevan University HB</u>																							
Blaenau Gwent LA	177	173	97.7	173	97.7	173	97.7	173	97.7	173	97.7	173	97.7	172	97.2	174	98.3	172	97.2	171	96.6	172	97.2
Caerphilly LA	424	407	96.0	407	96.0	407	96.0	407	96.0	407	96.0	407	96.0	403	95.0	408	96.2	403	95.0	403	95.0	401	94.6
Monmouthshire LA	176	171	97.2	171	97.2	171	97.2	171	97.2	171	97.2	171	97.2	166	94.3	170	96.6	167	94.9	167	94.9	166	94.3
Newport LA	443	413	93.2	413	93.2	413	93.2	413	93.2	413	93.2	413	93.2	404	91.2	412	93.0	402	90.7	400	90.3	402	90.7
Torfaen LA	246	230	93.5	230	93.5	230	93.5	230	93.5	230	93.5	230	93.5	226	91.9	230	93.5	226	91.9	226	91.9	223	90.7
Health Board Total	1466	1394	95.1	1394	95.1	1394	95.1	1394	95.1	1394	95.1	1394	95.1	1371	93.5	1394	95.1	1370	93.5	1367	93.2	1364	93.0
<u>Betsi Cadwaladr University HB</u>																							
Anglesey LA	144	140	97.2	140	97.2	140	97.2	140	97.2	140	97.2	140	97.2	139	96.5	140	97.2	139	96.5	139	96.5	139	96.5
Conwy LA	249	234	94.0	234	94.0	234	94.0	234	94.0	234	94.0	234	94.0	225	90.4	234	94.0	224	90.0	225	90.4	226	90.8
Denbighshire LA	212	203	95.8	203	95.8	203	95.8	203	95.8	203	95.8	203	95.8	194	91.5	206	97.2	195	92.0	192	90.6	194	91.5
Flintshire LA	350	335	95.7	335	95.7	335	95.7	335	95.7	335	95.7	335	95.7	326	93.1	336	96.0	328	93.7	327	93.4	325	92.9
Gwynedd LA	242	233	96.3	233	96.3	233	96.3	233	96.3	233	96.3	233	96.3	224	92.6	236	97.5	224	92.6	224	92.6	224	92.6
Wrexham LA	319	311	97.5	311	97.5	311	97.5	311	97.5	311	97.5	310	97.2	301	94.4	312	97.8	299	93.7	298	93.4	301	94.4
Health Board Total	1516	1456	96.0	1456	96.0	1456	96.0	1456	96.0	1456	96.0	1455	96.0	1409	92.9	1464	96.6	1409	92.9	1405	92.7	1409	92.9
<u>Cardiff and Vale University HB</u>																							
Cardiff LA	847	797	94.1	797	94.1	797	94.1	797	94.1	797	94.1	795	93.9	758	89.5	794	93.7	753	88.9	754	89.0	756	89.3
Vale of Glamorgan LA	305	290	95.1	290	95.1	290	95.1	290	95.1	290	95.1	290	95.1	278	91.1	290	95.1	277	90.8	278	91.1	277	90.8
Health Board Total	1152	1087	94.4	1087	94.4	1087	94.4	1087	94.4	1087	94.4	1085	94.2	1036	89.9	1084	94.1	1030	89.4	1032	89.6	1033	89.7
<u>Cwm Taf Morgannwg University HB</u>																							
Bridgend LA	364	351	96.4	351	96.4	351	96.4	351	96.4	351	96.4	351	96.4	343	94.2	355	97.5	342	94.0	342	94.0	342	94.0
Merthyr Tydfil LA	153	143	93.5	143	93.5	143	93.5	143	93.5	143	93.5	142	92.8	142	92.8	147	96.1	141	92.2	140	91.5	141	92.2
Rhondda Cynon Taf LA	541	529	97.8	529	97.8	529	97.8	529	97.8	529	97.8	529	97.8	523	96.7	528	97.6	523	96.7	521	96.3	521	96.3
Health Board Total	1058	1023	96.7	1023	96.7	1023	96.7	1023	96.7	1023	96.7	1022	96.6	1008	95.3	1030	97.4	1006	95.1	1003	94.8	1004	94.9
<u>Hywel Dda University HB</u>																							
Carmarthenshire LA	408	378	92.6	378	92.6	378	92.6	378	92.6	378	92.6	376	92.2	369	90.4	382	93.6	367	90.0	367	90.0	367	90.0
Ceredigion LA	153	147	96.1	147	96.1	147	96.1	147	96.1	147	96.1	147	96.1	145	94.8	145	94.8	144	94.1	145	94.8	144	94.1
Pembrokeshire LA	230	219	95.2	219	95.2	219	95.2	219	95.2	219	95.2	219	95.2	215	93.5	217	94.3	213	92.6	214	93.0	214	93.0
Health Board Total	791	744	94.1	744	94.1	744	94.1	744	94.1	744	94.1	742	93.8	729	92.2	744	94.1	724	91.5	726	91.8	725	91.7
<u>Powys Teaching HB</u>																							
Health Board Total	259	247	95.4	247	95.4	247	95.4	247	95.4	247	95.4	244	94.2	242	93.4	249	96.1	241	93.1	243	93.8	244	94.2
<u>Swansea Bay University HB</u>																							
Neath Port Talbot LA	329	309	93.9	309	93.9	309	93.9	309	93.9	309	93.9	309	93.9	302	91.8	312	94.8	304	92.4	303	92.1	304	92.4
Swansea LA	513	498	97.1	498	97.1	498	97.1	498	97.1	498	97.1	498	97.1	481	93.8	501	97.7	487	94.9	485	94.5	484	94.3
Health Board Total	842	807	95.8	807	95.8	807	95.8	807	95.8	807	95.8	807	95.8	783	93.0	813	96.6	791	93.9	788	93.6	788	93.6
Unknown	7	6	85.7	6	85.7	6	85.7	6	85.7	6	85.7	6	85.7	6	85.7	6	85.7	6	85.7	6	85.7	6	85.7
Wales Total	7091	6764	95.4	6764	95.4	6764	95.4	6764	95.4	6764	95.4	6755	95.3	6584	92.9	6784	95.7	6577	92.8	6570	92.7	6573	92.7

¹ Full primary course (one dose) of pneumococcal conjugate vaccine.

² Final (booster) dose of pneumococcal conjugate vaccine.

³ Uptake of 3 doses of meningococcal serogroup B (MenB) vaccine, scheduled at two, four and 12-13 months of age.

⁴ Uptake of Hib/MenC booster will also include those with no recorded Hib/MenC booster but received the additional hexavalent vaccine to protect against Hib from 1st July 2025.

Table 5. Vaccine uptake in children reaching their 4th birthday between 01/07/25 and 30/09/25 and resident on 30/09/25. The proportion of children who have received all of these vaccines by their 4th birthday is also presented.

Area	Resident children (n)	4 in 1 Preschool Booster ¹		HibMenC ²		MMR dose 2		Up to date in schedule ³	
		(n)	(%)	(n)	(%)	(n)	(%)	(n)	(%)
<u>Aneurin Bevan University HB</u>									
Blaenau Gwent LA	183	159	86.9	174	95.1	158	86.3	155	84.7
Caerphilly LA	438	387	88.4	422	96.3	386	88.1	381	87.0
Monmouthshire LA	205	176	85.9	195	95.1	176	85.9	172	83.9
Newport LA	514	390	75.9	449	87.4	390	75.9	378	73.5
Torfaen LA	249	195	78.3	227	91.2	194	77.9	192	77.1
Health Board Total	1589	1307	82.3	1467	92.3	1304	82.1	1278	80.4
<u>Betsi Cadwaladr University HB</u>									
Anglesey LA	161	143	88.8	155	96.3	143	88.8	142	88.2
Conwy LA	277	233	84.1	260	93.9	235	84.8	233	84.1
Denbighshire LA	255	218	85.5	241	94.5	217	85.1	213	83.5
Flintshire LA	369	326	88.3	354	95.9	327	88.6	321	87.0
Gwynedd LA	284	241	84.9	268	94.4	248	87.3	241	84.9
Wrexham LA	348	303	87.1	333	95.7	305	87.6	301	86.5
Health Board Total	1694	1464	86.4	1611	95.1	1475	87.1	1451	85.7
<u>Cardiff and Vale University HB</u>									
Cardiff LA	990	823	83.1	918	92.7	829	83.7	806	81.4
Vale of Glamorgan LA	346	284	82.1	325	93.9	286	82.7	283	81.8
Health Board Total	1336	1107	82.9	1243	93.0	1115	83.5	1089	81.5
<u>Cwm Taf Morgannwg University HB</u>									
Bridgend LA	360	324	90.0	351	97.5	323	89.7	321	89.2
Merthyr Tydfil LA	145	123	84.8	135	93.1	122	84.1	120	82.8
Rhondda Cynon Taf LA	610	543	89.0	586	96.1	542	88.9	537	88.0
Health Board Total	1115	990	88.8	1072	96.1	987	88.5	978	87.7
<u>Hywel Dda University HB</u>									
Cardiff LA	429	361	84.1	399	93.0	363	84.6	359	83.7
Ceredigion LA	171	153	89.5	159	93.0	151	88.3	151	88.3
Pembrokeshire LA	316	280	88.6	306	96.8	284	89.9	280	88.6
Health Board Total	916	794	86.7	864	94.3	798	87.1	790	86.2
<u>Powys Teaching HB</u>									
Health Board Total	297	262	88.2	276	92.9	265	89.2	260	87.5
<u>Swansea Bay University HB</u>									
Neath Port Talbot LA	306	260	85.0	292	95.4	263	85.9	260	85.0
Swansea LA	591	518	87.6	560	94.8	518	87.6	511	86.5
Health Board Total	897	778	86.7	852	95.0	781	87.1	771	86.0
Unknown	3	2	66.7	1	33.3	1	33.3	1	33.3
Wales Total	7847	6704	85.4	7386	94.1	6726	85.7	6618	84.3

¹ Uptake of acellular pertussis used as proxy.

² Uptake of Hib/MenC booster will also include those with no recorded Hib/MenC booster but received the additional hexavalent vaccine to protect against Hib from 1st July 2025.

³ Completed "4 in 1" preschool booster, the Hib/ MenC booster and second MMR dose by four years of age.

Table 6. Vaccine uptake in children reaching their 5th birthday between 01/07/25 and 30/09/25 and resident on 30/09/25. The proportion of children who have received all of these vaccines by their 5th birthday is also presented.

Area	Resident children	4 in 1 Preschool Booster ¹		HibMenCb ²		MMR dose 2		Up to date in schedule ³	
	(n)	(n)	(%)	(n)	(%)	(n)	(%)	(n)	(%)
<u>Aneurin Bevan University HB</u>									
Blaenau Gwent LA	200	177	88.5	182	91.0	178	89.0	173	86.5
Caerphilly LA	436	394	90.4	414	95.0	394	90.4	389	89.2
Monmouthshire LA	231	204	88.3	214	92.6	204	88.3	200	86.6
Newport LA	533	450	84.4	474	88.9	450	84.4	433	81.2
Torfaen LA	269	235	87.4	247	91.8	233	86.6	228	84.8
Health Board Total	1669	1460	87.5	1531	91.7	1459	87.4	1423	85.3
<u>Betsi Cadwaladr University HB</u>									
Anglesey LA	169	160	94.7	166	98.2	159	94.1	158	93.5
Conwy LA	265	239	90.2	251	94.7	241	90.9	236	89.1
Denbighshire LA	243	220	90.5	232	95.5	220	90.5	220	90.5
Flintshire LA	401	366	91.3	383	95.5	367	91.5	364	90.8
Gwynedd LA	284	258	90.8	270	95.1	263	92.6	255	89.8
Wrexham LA	357	327	91.6	334	93.6	329	92.2	323	90.5
Health Board Total	1719	1570	91.3	1636	95.2	1579	91.9	1556	90.5
<u>Cardiff and Vale University HB</u>									
Cardiff LA	979	827	84.5	887	90.6	831	84.9	805	82.2
Vale of Glamorgan LA	358	315	88.0	332	92.7	315	88.0	313	87.4
Health Board Total	1337	1142	85.4	1219	91.2	1146	85.7	1118	83.6
<u>Cwm Taf Morgannwg University HB</u>									
Bridgend LA	383	363	94.8	374	97.7	367	95.8	362	94.5
Merthyr Tydfil LA	138	125	90.6	130	94.2	126	91.3	124	89.9
Rhondda Cynon Taf LA	649	600	92.4	619	95.4	600	92.4	589	90.8
Health Board Total	1170	1088	93.0	1123	96.0	1093	93.4	1075	91.9
<u>Hywel Dda University HB</u>									
Cardiff LA	476	427	89.7	447	93.9	429	90.1	423	88.9
Ceredigion LA	131	119	90.8	126	96.2	121	92.4	119	90.8
Pembrokeshire LA	265	235	88.7	248	93.6	235	88.7	235	88.7
Health Board Total	872	781	89.6	821	94.2	785	90.0	777	89.1
<u>Powys Teaching HB</u>									
Health Board Total	258	228	88.4	240	93.0	228	88.4	226	87.6
<u>Swansea Bay University HB</u>									
Neath Port Talbot LA	339	299	88.2	324	95.6	304	89.7	294	86.7
Swansea LA	580	530	91.4	546	94.1	536	92.4	518	89.3
Health Board Total	919	829	90.2	870	94.7	840	91.4	812	88.4
Unknown	1	1	100.0	1	100.0	1	100.0	1	100.0
Wales Total	7945	7099	89.4	7441	93.7	7131	89.8	6988	88.0

¹ Uptake of acellular pertussis used as proxy

² Uptake of Hib/MenC booster will also include those with no recorded Hib/MenC booster but received the additional hexavalent vaccine to protect against Hib from 1st July 2025.

³ Completed "4 in 1" preschool booster, the Hib/ MenC booster and second MMR dose by five years of age.

Table 7. Vaccine uptake in children reaching their 5th birthday between 01/07/25 and 30/09/25 and resident on 30/09/25.

Area	Resident children	D3		T3		P3		Po3		Hib3		MenC ¹		PCVf ²		HibMenC ³		MMR1		MMR2		D4		T4		aP		Po4			
		(n)	(n) (%)	(n) (%)	(n) (%)	(n) (%)	(n) (%)	(n) (%)	(n) (%)	(n) (%)	(n) (%)	(n) (%)	(n) (%)	(n) (%)	(n) (%)	(n) (%)	(n) (%)	(n) (%)	(n) (%)	(n) (%)	(n) (%)	(n) (%)	(n) (%)	(n) (%)	(n) (%)	(n) (%)	(n) (%)	(n) (%)	(n) (%)	(n) (%)	
Aneurin Bevan University HB																															
Blaenau Gwent LA	200	192	96.0	192	96.0	192	96.0	192	96.0	192	96.0	0	0.0	182	91	182	91.0	187	93.5	178	89.0	177	88.5	177	88.5	177	88.5	177	88.5	177	88.5
Caerphilly LA	436	424	97.2	424	97.2	424	97.2	424	97.2	424	97.2	0	0.0	411	94.3	414	95.0	423	97.0	394	90.4	394	90.4	394	90.4	394	90.4	394	90.4	394	90.4
Monmouthshire LA	231	218	94.4	218	94.4	218	94.4	218	94.4	218	94.4	0	0.0	214	92.6	214	92.6	219	94.8	204	88.3	204	88.3	204	88.3	204	88.3	203	87.9		
Newport LA	533	486	91.2	486	91.2	486	91.2	486	91.2	486	91.2	2	0.4	462	86.7	474	88.9	489	91.7	450	84.4	450	84.4	450	84.4	450	84.4	450	84.4	450	84.4
Torfaen LA	269	255	94.8	255	94.8	255	94.8	255	94.8	254	94.4	0	0.0	247	91.8	247	91.8	253	94.1	233	86.6	235	87.4	235	87.4	235	87.4	235	87.4	235	87.4
Health Board Total	1669	1575	94.4	1575	94.4	1575	94.4	1575	94.4	1574	94.3	2	0.1	1516	90.8	1531	91.7	1571	94.1	1459	87.4	1460	87.5	1460	87.5	1460	87.5	1459	87.4	1459	87.4
Betsi Cadwaladr University HB																															
Anglesey LA	169	167	98.8	167	98.8	167	98.8	167	98.8	167	98.8	0	0.0	163	96.4	166	98.2	166	98.2	159	94.1	160	94.7	160	94.7	160	94.7	160	94.7	160	94.7
Conwy LA	265	255	96.2	255	96.2	255	96.2	255	96.2	255	96.2	1	0.4	243	91.7	251	94.7	251	94.7	241	90.9	239	90.2	239	90.2	239	90.2	239	90.2	239	90.2
Denbighshire LA	243	234	96.3	234	96.3	234	96.3	233	95.9	234	96.3	0	0.0	226	93	232	95.5	233	95.9	220	90.5	220	90.5	220	90.5	220	90.5	220	90.5	220	90.5
Flintshire LA	401	387	96.5	387	96.5	387	96.5	387	96.5	387	96.5	1	0.2	376	93.8	383	95.5	386	96.3	367	91.5	366	91.3	366	91.3	366	91.3	366	91.3	366	91.3
Gwynedd LA	284	274	96.5	274	96.5	274	96.5	274	96.5	274	96.5	0	0.0	254	89.4	270	95.1	269	94.7	263	92.6	258	90.8	258	90.8	258	90.8	258	90.8	258	90.8
Wrexham LA	357	340	95.2	340	95.2	340	95.2	340	95.2	340	95.2	0	0.0	330	92.4	334	93.6	342	95.8	329	92.2	327	91.6	327	91.6	327	91.6	327	91.6	327	91.6
Health Board Total	1719	1657	96.4	1657	96.4	1657	96.4	1656	96.3	1657	96.4	2	0.1	1592	92.6	1636	95.2	1647	95.8	1579	91.9	1570	91.3	1570	91.3	1570	91.3	1570	91.3	1570	91.3
Cardiff and Vale University HB																															
Cardiff LA	979	902	92.1	902	92.1	902	92.1	901	92.0	901	92.0	1	0.1	815	83.2	887	90.6	896	91.5	831	84.9	827	84.5	827	84.5	827	84.5	827	84.5	827	84.5
Vale of Glamorgan LA	358	339	94.7	339	94.7	339	94.7	339	94.7	338	94.4	0	0.0	319	89.1	332	92.7	334	93.3	315	88.0	316	88.3	316	88.3	315	88.0	316	88.3	316	88.3
Health Board Total	1337	1241	92.8	1241	92.8	1241	92.8	1240	92.7	1239	92.7	1	0.1	1134	84.8	1219	91.2	1230	92.0	1146	85.7	1143	85.5	1143	85.5	1142	85.4	1143	85.5	1143	85.5
Cwm Taf Morgannwg University HB																															
Bridgend LA	383	374	97.7	374	97.7	374	97.7	374	97.7	374	97.7	0	0.0	369	96.3	374	97.7	374	97.7	367	95.8	363	94.8	363	94.8	363	94.8	363	94.8	363	94.8
Merthyr Tydfil LA	138	132	95.7	132	95.7	132	95.7	132	95.7	132	95.7	1	0.7	130	94.2	130	94.2	131	94.9	126	91.3	125	90.6	125	90.6	125	90.6	125	90.6	125	90.6
Rhondda Cynon Taf LA	649	631	97.2	631	97.2	631	97.2	631	97.2	631	97.2	0	0.0	610	94	619	95.4	628	96.8	600	92.4	600	92.4	600	92.4	600	92.4	600	92.4	600	92.4
Health Board Total	1170	1137	97.2	1137	97.2	1137	97.2	1137	97.2	1137	97.2	1	0.1	1109	94.8	1123	96.0	1133	96.8	1093	93.4	1088	93.0	1088	93.0	1088	93.0	1088	93.0	1088	93.0
Hywel Dda University HB																															
Carmarthenshire LA	476	459	96.4	459	96.4	458	96.2	459	96.4	458	96.2	0	0.0	435	91.4	447	93.9	452	95.0	429	90.1	427	89.7	427	89.7	427	89.7	427	89.7	427	89.7
Ceredigion LA	131	128	97.7	128	97.7	128	97.7	128	97.7	128	97.7	0	0.0	124	94.7	126	96.2	127	96.9	121	92.4	119	90.8	119	90.8	119	90.8	119	90.8	119	90.8
Pembrokeshire LA	265	254	95.8	254	95.8	254	95.8	254	95.8	254	95.8	0	0.0	240	90.6	248	93.6	251	94.7	235	88.7	235	88.7	235	88.7	235	88.7	234	88.3		
Health Board Total	872	841	96.4	841	96.4	840	96.3	841	96.4	840	96.3	0	0.0	799	91.6	821	94.2	830	95.2	785	90.0	781	89.6	781	89.6	781	89.6	781	89.6	780	89.4
Powys Teaching HB																															
Health Board Total	258	241	93.4	241	93.4	241	93.4	241	93.4	241	93.4	1	0.4	236	91.5	240	93.0	240	93.0	228	88.4	228	88.4	228	88.4	228	88.4	228	88.4	228	88.4
Swansea Bay University HB																															
Neath Port Talbot LA	339	331	97.6	331	97.6	331	97.6	331	97.6	331	97.6	0	0.0	318	93.8	324	95.6	332	97.9	304	89.7	300	88.5	300	88.5	299	88.2	299	88.2		
Swansea LA	580	558	96.2	558	96.2	558	96.2	557	96.0	556	95.9	2	0.3	518	89.3	546	94.1	554	95.5	536	92.4	530	91.4	530	91.4	530	91.4	529	91.2		
Health Board Total	919	889	96.7	889	96.7	889	96.7	888	96.6	887	96.5	2	0.2	836	91	870	94.7	886	96.4	840	91.4	830	90.3	830	90.3	829	90.2	828	90.1		
Unknown	1	1	100.0	1	100.0	1	100.0	1	100.0	1	100.0	0	0.0	1	100	1	100.0	1	100.0	1	100.0	1	100.0	1	100.0	1	100.0	1	100.0	1	100.0
Wales Total	7945	7582	95.4	7582	95.4	7581	95.4	7579	95.4	7576	95.4	9	0.1	7223	90.9	7441	93.7	7538	94.9	7131	89.8	7101	89.4	7101	89.4	7099	89.4	7097	89.3		

¹ One dose of MenC vaccine scheduled at 12 weeks of age.

² Final (booster) dose of pneumococcal conjugate vaccine.

³ Uptake of Hib/MenC booster will also include those with no recorded Hib/MenC booster but received the additional hexavalent vaccine to protect against Hib from 1st July 2025.

Table 8a. Uptake of HPV vaccine in children reaching 13 years of age between 01/09/24 and 31/08/25 (School Year 8) and resident on 30/09/25, with breakdown of coverage for sex.

Area	Resident children			Resident girls			Resident boys		
	(n)	HPV 1 dose (n)	HPV 1 dose (%)	(n)	HPV 1 dose (girls) (n)	HPV 1 dose (girls) (%)	(n)	HPV 1 dose (boys) (n)	HPV 1 dose (boys) (%)
<u>Aneurin Bevan University HB</u>									
Blaenau Gwent LA	799	543	68.0	395	278	70.4	404	265	65.6
Caerphilly LA	2204	1563	70.9	1085	807	74.4	1119	756	67.6
Monmouthshire LA	1077	741	68.8	496	358	72.2	581	383	65.9
Newport LA	2274	1471	64.7	1093	751	68.7	1180	720	61.0
Torfaen LA	1195	804	67.3	584	408	69.9	611	396	64.8
Health Board Total	7549	5122	67.9	3653	2602	71.2	3895	2520	64.7
<u>Betsi Cadwaladr University HB</u>									
Anglesey LA	838	550	65.6	421	307	72.9	417	243	58.3
Conwy LA	1309	765	58.4	655	418	63.8	654	347	53.1
Denbighshire LA	1172	627	53.5	562	335	59.6	610	292	47.9
Flintshire LA	1909	1239	64.9	912	634	69.5	997	605	60.7
Gwynedd LA	1444	1006	69.7	731	546	74.7	713	460	64.5
Wrexham LA	1721	1110	64.5	826	588	71.2	895	522	58.3
Health Board Total	8393	5297	63.1	4107	2828	68.9	4286	2469	57.6
<u>Cardiff and Vale University HB</u>									
Cardiff LA	4896	3279	67.0	2417	1676	69.3	2479	1603	64.7
Vale of Glamorgan LA	1720	1355	78.8	824	680	82.5	896	675	75.3
Health Board Total	6616	4634	70.0	3241	2356	72.7	3375	2278	67.5
<u>Cwm Taf Morgannwg University HB</u>									
Bridgend LA	1798	1446	80.4	909	756	83.2	889	690	77.6
Merthyr Tydfil LA	786	582	74.0	388	307	79.1	398	275	69.1
Rhondda Cynon Taf LA	2994	2344	78.3	1479	1177	79.6	1515	1167	77.0
Health Board Total	5578	4372	78.4	2776	2240	80.7	2802	2132	76.1
<u>Hywel Dda University HB</u>									
Carmarthenshire LA	2293	1716	74.8	1097	848	77.3	1196	868	72.6
Ceredigion LA	722	575	79.6	347	276	79.5	375	299	79.7
Pembrokeshire LA	1454	1001	68.8	738	526	71.3	715	475	66.4
Health Board Total	4469	3292	73.7	2182	1650	75.6	2286	1642	71.8
<u>Powys Teaching HB</u>									
Health Board Total	1321	996	75.4	639	501	78.4	682	495	72.6
<u>Swansea Bay University HB</u>									
Neath Port Talbot LA	1697	1310	77.2	795	614	77.2	902	696	77.2
Swansea LA	2972	2356	79.3	1456	1183	81.3	1516	1173	77.4
Health Board Total	4669	3666	78.5	2251	1797	79.8	2418	1869	77.3
Unknown	29	17	58.6	20	10	50.0	9	7	77.8
Wales Total	38624	27396	70.9	18869	13984	74.1	19753	13412	67.9

¹ Timings of immunisation sessions vary between HBs, immunisation sessions have now concluded for the 2024-25 academic year.

Table 8b. Uptake of HPV vaccine in children reaching 14 years of age between 01/09/24 and 31/08/25 (School Year 9) and resident on 30/09/25, with breakdown of coverage for sex.

Area	Resident children			Resident girls (n)			Resident boys (n)		
	(n)	HPV 1 dose (n)	HPV 1 dose (%)	(n)	HPV 1 dose (n)	HPV 1 dose (%)	(n)	HPV 1 dose (n)	HPV 1 dose (%)
<u>Aneurin Bevan University HB</u>									
Blaenau Gwent LA	823	559	67.9	371	268	72.2	452	291	64.4
Caerphilly LA	2280	1662	72.9	1141	881	77.2	1138	780	68.5
Monmouthshire LA	1068	790	74.0	525	392	74.7	543	398	73.3
Newport LA	2325	1522	65.5	1180	789	66.9	1144	733	64.1
Torfaen LA	1216	896	73.7	589	461	78.3	627	435	69.4
Health Board Total	7712	5429	70.4	3806	2791	73.3	3904	2637	67.5
<u>Betsi Cadwaladr University HB</u>									
Anglesey LA	851	671	78.8	413	341	82.6	438	330	75.3
Conwy LA	1328	820	61.7	632	417	66.0	696	403	57.9
Denbighshire LA	1247	704	56.5	622	366	58.8	624	338	54.2
Flintshire LA	1847	1365	73.9	917	716	78.1	930	649	69.8
Gwynedd LA	1344	1045	77.8	688	560	81.4	656	485	73.9
Wrexham LA	1715	1259	73.4	866	655	75.6	849	604	71.1
Health Board Total	8332	5864	70.4	4138	3055	73.8	4193	2809	67.0
<u>Cardiff and Vale University HB</u>									
Cardiff LA	4780	3428	71.7	2268	1680	74.1	2512	1748	69.6
Vale of Glamorgan LA	1750	1460	83.4	876	735	83.9	874	725	83.0
Health Board Total	6530	4888	74.9	3144	2415	76.8	3386	2473	73.0
<u>Cwm Taf Morgannwg University HB</u>									
Bridgend LA	1859	1500	80.7	876	722	82.4	983	778	79.1
Merthyr Tydfil LA	764	610	79.8	367	309	84.2	397	301	75.8
Rhondda Cynon Taf LA	3169	2543	80.2	1568	1299	82.8	1599	1242	77.7
Health Board Total	5792	4653	80.3	2811	2330	82.9	2979	2321	77.9
<u>Hywel Dda University HB</u>									
Carmarthenshire LA	2340	1843	78.8	1144	935	81.7	1196	908	75.9
Ceredigion LA	682	538	78.9	329	271	82.4	353	267	75.6
Pembrokeshire LA	1394	1009	72.4	713	542	76.0	680	467	68.7
Health Board Total	4416	3390	76.8	2186	1748	80.0	2229	1642	73.7
<u>Powys Teaching HB</u>									
Health Board Total	1371	1097	80.0	680	549	80.7	690	548	79.4
<u>Swansea Bay University HB</u>									
Neath Port Talbot LA	1800	1526	84.8	871	755	86.7	929	771	83.0
Swansea LA	2953	2518	85.3	1381	1190	86.2	1572	1328	84.5
Health Board Total	4753	4044	85.1	2252	1945	86.4	2501	2099	83.9
Unknown	23	11	47.8	10	3	30.0	13	8	61.5
Wales Total	38929	29376	75.5	19027	14836	78.0	19895	14537	73.1

¹ Timings of immunisation sessions vary between HBs, immunisation sessions have now concluded for the 2024-25 academic year.

Table 8c. Uptake of HPV vaccine in children reaching 15 years of age between 01/09/24 and 31/08/25 (School Year 10) and resident on 30/09/25, with breakdown of coverage for sex.

Area	Resident children			Resident girls			Resident boys		
	(n)	HPV 1 dose (n)	HPV 1 dose (%)	(n)	HPV 1 dose (n)	HPV 1 dose (%)	(n)	HPV 1 dose (n)	HPV 1 dose (%)
<u>Aneurin Bevan University HB</u>									
Blaenau Gwent LA	846	542	64.1	432	296	68.5	414	246	59.4
Caerphilly LA	2279	1596	70.0	1102	807	73.2	1177	789	67.0
Monmouthshire LA	1129	796	70.5	544	391	71.9	584	405	69.3
Newport LA	2278	1385	60.8	1121	708	63.2	1157	677	58.5
Torfaen LA	1205	838	69.5	601	451	75.0	604	387	64.1
Health Board Total	7737	5157	66.7	3800	2653	69.8	3936	2504	63.6
<u>Betsi Cadwaladr University HB</u>									
Anglesey LA	816	613	75.1	395	310	78.5	421	303	72.0
Conwy LA	1357	942	69.4	672	494	73.5	684	448	65.5
Denbighshire LA	1209	748	61.9	591	392	66.3	618	356	57.6
Flintshire LA	1867	1423	76.2	871	700	80.4	996	723	72.6
Gwynedd LA	1404	1063	75.7	647	513	79.3	757	550	72.7
Wrexham LA	1675	1234	73.7	825	627	76.0	850	607	71.4
Health Board Total	8328	6023	72.3	4001	3036	75.9	4326	2987	69.0
<u>Cardiff and Vale University HB</u>									
Cardiff LA	4667	3261	69.9	2286	1657	72.5	2379	1602	67.3
Vale of Glamorgan LA	1762	1405	79.7	869	722	83.1	893	683	76.5
Health Board Total	6429	4666	72.6	3155	2379	75.4	3272	2285	69.8
<u>Cwm Taf Morgannwg University HB</u>									
Bridgend LA	1810	1498	82.8	900	758	84.2	910	740	81.3
Merthyr Tydfil LA	697	554	79.5	313	260	83.1	384	294	76.6
Rhondda Cynon Taf LA	3020	2457	81.4	1515	1275	84.2	1504	1182	78.6
Health Board Total	5527	4509	81.6	2728	2293	84.1	2798	2216	79.2
<u>Hywel Dda University HB</u>									
Carmarthenshire LA	2175	1728	79.4	1031	852	82.6	1144	876	76.6
Ceredigion LA	749	614	82.0	373	324	86.9	376	290	77.1
Pembrokeshire LA	1415	1004	71.0	703	537	76.4	712	467	65.6
Health Board Total	4339	3346	77.1	2107	1713	81.3	2232	1633	73.2
<u>Powys Teaching HB</u>									
Health Board Total	1282	1012	78.9	627	511	81.5	653	501	76.7
<u>Swansea Bay University HB</u>									
Neath Port Talbot LA	1694	1472	86.9	825	722	87.5	869	750	86.3
Swansea LA	2855	2431	85.1	1382	1208	87.4	1473	1223	83.0
Health Board Total	4549	3903	85.8	2207	1930	87.4	2342	1973	84.2
Unknown	21	16	76.2	12	10	83.3	9	6	66.7
Wales Total	38212	28632	74.9	18637	14525	77.9	19568	14105	72.1

¹ Timings of immunisation sessions vary between HBs, immunisation sessions have now concluded for the 2024-25 academic year.

Table 9. Uptake of HPV vaccine in children reaching 13, 14 and 15 years of age between 01/09/24 and 31/08/25 and resident on 30/09/25.

Area	13 years (2024-25 School Year 8) ¹			14 years (2024-25 School Year 9) ¹			15 years (2024-25 School Year 10)		
	Resident children (n)	HPV 1 dose (n)	(%)	Resident children (n)	HPV 1 dose (n)	(%)	Resident children (n)	HPV 1 dose (n)	(%)
<u>Aneurin Bevan University HB</u>									
Blaenau Gwent LA	799	543	68.0	823	559	67.9	846	542	64.1
Caerphilly LA	2204	1563	70.9	2280	1662	72.9	2279	1596	70.0
Monmouthshire LA	1077	741	68.8	1068	790	74.0	1129	796	70.5
Newport LA	2274	1471	64.7	2325	1522	65.5	2278	1385	60.8
Torfaen LA	1195	804	67.3	1216	896	73.7	1205	838	69.5
Health Board Total	7549	5122	67.9	7712	5429	70.4	7737	5157	66.7
<u>Betsi Cadwaladr University HB</u>									
Anglesey LA	838	550	65.6	851	671	78.8	816	613	75.1
Conwy LA	1309	765	58.4	1328	820	61.7	1357	942	69.4
Denbighshire LA	1172	627	53.5	1247	704	56.5	1209	748	61.9
Flintshire LA	1909	1239	64.9	1847	1365	73.9	1867	1423	76.2
Gwynedd LA	1444	1006	69.7	1344	1045	77.8	1404	1063	75.7
Wrexham LA	1721	1110	64.5	1715	1259	73.4	1675	1234	73.7
Health Board Total	8393	5297	63.1	8332	5864	70.4	8328	6023	72.3
<u>Cardiff and Vale University HB</u>									
Cardiff LA	4896	3279	67.0	4780	3428	71.7	4667	3261	69.9
Vale of Glamorgan LA	1720	1355	78.8	1750	1460	83.4	1762	1405	79.7
Health Board Total	6616	4634	70.0	6530	4888	74.9	6429	4666	72.6
<u>Cwm Taf Morgannwg University HB</u>									
Bridgend LA	1798	1446	80.4	1859	1500	80.7	1810	1498	82.8
Merthyr Tydfil LA	786	582	74.0	764	610	79.8	697	554	79.5
Rhondda Cynon Taf LA	2994	2344	78.3	3169	2543	80.2	3020	2457	81.4
Health Board Total	5578	4372	78.4	5792	4653	80.3	5527	4509	81.6
<u>Hywel Dda University HB</u>									
Carmarthenshire LA	2293	1716	74.8	2340	1843	78.8	2175	1728	79.4
Ceredigion LA	722	575	79.6	682	538	78.9	749	614	82.0
Pembrokeshire LA	1454	1001	68.8	1394	1009	72.4	1415	1004	71.0
Health Board Total	4469	3292	73.7	4416	3390	76.8	4339	3346	77.1
<u>Powys Teaching HB</u>									
Health Board Total	1321	996	75.4	1371	1097	80.0	1282	1012	78.9
<u>Swansea Bay University HB</u>									
Neath Port Talbot LA	1697	1310	77.2	1800	1526	84.8	1694	1472	86.9
Swansea LA	2972	2356	79.3	2953	2518	85.3	2855	2431	85.1
Health Board Total	4669	3666	78.5	4753	4044	85.1	4549	3903	85.8
Unknown	29	17	58.6	23	11	47.8	21	16	76.2
Wales Total	38624	27396	70.9	38929	29376	75.5	38212	28632	74.9

¹ Timings of immunisation sessions vary between HBs, immunisation sessions have now concluded for the 2024-25 academic year.

Table 10a. Uptake of MenACWY vaccine in teenagers reaching 14 years of age between 01/09/24 and 31/08/25 (School Year 9) and resident on 30/09/25, with breakdown of coverage for sex.

Area	Resident children			Resident girls	MenACWY (girls)			Resident boys	MenACWY (boys)		
	(n)	(n)	(%)		(n)	(n)	(%)		(n)	(n)	(%)
<u>Aneurin Bevan University HB</u>	(n)	(n)	(%)	(n)	(n)	(%)	(n)	(n)	(%)		
Blaenau Gwent LA	823	530	64.4	371	244	65.8	452	286	63.3		
Caerphilly LA	2280	1616	70.9	1141	829	72.7	1138	787	69.2		
Monmouthshire LA	1068	782	73.2	525	380	72.4	543	402	74.0		
Newport LA	2325	1553	66.8	1180	794	67.3	1144	759	66.3		
Torfaen LA	1216	857	70.5	589	432	73.3	627	425	67.8		
Health Board Total	7712	5338	69.2	3806	2679	70.4	3904	2659	68.1		
<u>Betsi Cadwaladr University HB</u>											
Anglesey LA	851	571	67.1	413	286	69.2	438	285	65.1		
Conwy LA	1328	838	63.1	632	416	65.8	696	422	60.6		
Denbighshire LA	1247	707	56.7	622	349	56.1	624	358	57.4		
Flintshire LA	1847	1307	70.8	917	673	73.4	930	634	68.2		
Gwynedd LA	1344	902	67.1	688	467	67.9	656	435	66.3		
Wrexham LA	1715	1208	70.4	866	622	71.8	849	586	69.0		
Health Board Total	8332	5533	66.4	4138	2813	68.0	4193	2720	64.9		
<u>Cardiff and Vale University HB</u>											
Cardiff LA	4780	3167	66.3	2268	1524	67.2	2512	1643	65.4		
Vale of Glamorgan LA	1750	1175	67.1	876	595	67.9	874	580	66.4		
Health Board Total	6530	4342	66.5	3144	2119	67.4	3386	2223	65.7		
<u>Cwm Taf Morgannwg University HB</u>											
Bridgend LA	1859	1491	80.2	876	697	79.6	983	794	80.8		
Merthyr Tydfil LA	764	598	78.3	367	287	78.2	397	311	78.3		
Rhondda Cynon Taf LA	3169	2535	80.0	1568	1262	80.5	1599	1271	79.5		
Health Board Total	5792	4624	79.8	2811	2246	79.9	2979	2376	79.8		
<u>Hywel Dda University HB</u>											
Carmarthenshire LA	2340	1808	77.3	1144	903	78.9	1196	905	75.7		
Ceredigion LA	682	558	81.8	329	269	81.8	353	289	81.9		
Pembrokeshire LA	1394	985	70.7	713	512	71.8	680	473	69.6		
Health Board Total	4416	3351	75.9	2186	1684	77.0	2229	1667	74.8		
<u>Powys Teaching HB</u>											
Health Board Total	1371	1123	81.9	680	551	81.0	690	572	82.9		
<u>Swansea Bay University HB</u>											
Neath Port Talbot LA	1800	1441	80.1	871	702	80.6	929	739	79.5		
Swansea LA	2953	2458	83.2	1381	1159	83.9	1572	1299	82.6		
Health Board Total	4753	3899	82.0	2252	1861	82.6	2501	2038	81.5		
Unknown	23	8	34.8	10	3	30.0	13	5	38.5		
Wales Total	38929	28218	72.5	19027	13956	73.3	19895	14260	71.7		

¹ Timings of immunisation sessions vary between HBs, immunisation sessions have now concluded for the 2024-25 academic year.

Table 10b. Uptake of MenACWY vaccine in teenagers reaching 15 years of age between 01/09/24 and 31/08/25 (School Year 10) and resident on 30/09/25, with breakdown of coverage for sex.

Area	Resident children			Resident girls	MenACWY (girls)		Resident boys	MenACWY (boys)	
	(n)	(n)	(%)		(n)	(n)		(%)	(n)
<u>Aneurin Bevan University HB</u>	(n)	(n)	(%)	(n)	(n)	(%)	(n)	(n)	(%)
Blaenau Gwent LA	846	568	67.1	432	293	67.8	414	275	66.4
Caerphilly LA	2279	1650	72.4	1102	800	72.6	1177	850	72.2
Monmouthshire LA	1129	841	74.5	544	399	73.3	584	442	75.7
Newport LA	2278	1516	66.5	1121	765	68.2	1157	751	64.9
Torfaen LA	1205	875	72.6	601	449	74.7	604	426	70.5
Health Board Total	7737	5450	70.4	3800	2706	71.2	3936	2744	69.7
<u>Betsi Cadwaladr University HB</u>									
Anglesey LA	816	565	69.2	395	278	70.4	421	287	68.2
Conwy LA	1357	952	70.2	672	477	71.0	684	475	69.4
Denbighshire LA	1209	803	66.4	591	405	68.5	618	398	64.4
Flintshire LA	1867	1446	77.5	871	688	79.0	996	758	76.1
Gwynedd LA	1404	1016	72.4	647	491	75.9	757	525	69.4
Wrexham LA	1675	1259	75.2	825	627	76.0	850	632	74.4
Health Board Total	8328	6041	72.5	4001	2966	74.1	4326	3075	71.1
<u>Cardiff and Vale University HB</u>									
Cardiff LA	4667	3294	70.6	2286	1646	72.0	2379	1648	69.3
Vale of Glamorgan LA	1762	1276	72.4	869	630	72.5	893	646	72.3
Health Board Total	6429	4570	71.1	3155	2276	72.1	3272	2294	70.1
<u>Cwm Taf Morgannwg University HB</u>									
Bridgend LA	1810	1515	83.7	900	744	82.7	910	771	84.7
Merthyr Tydfil LA	697	535	76.8	313	254	81.2	384	281	73.2
Rhondda Cynon Taf LA	3020	2438	80.7	1515	1246	82.2	1504	1191	79.2
Health Board Total	5527	4488	81.2	2728	2244	82.3	2798	2243	80.2
<u>Hywel Dda University HB</u>									
Carmarthenshire LA	2175	1762	81.0	1031	856	83.0	1144	906	79.2
Ceredigion LA	749	640	85.4	373	315	84.5	376	325	86.4
Pembrokeshire LA	1415	1050	74.2	703	524	74.5	712	526	73.9
Health Board Total	4339	3452	79.6	2107	1695	80.4	2232	1757	78.7
<u>Powys Teaching HB</u>									
Health Board Total	1282	1019	79.5	627	498	79.4	653	521	79.8
<u>Swansea Bay University HB</u>									
Neath Port Talbot LA	1694	1417	83.6	825	698	84.6	869	719	82.7
Swansea LA	2855	2425	84.9	1382	1187	85.9	1473	1238	84.0
Health Board Total	4549	3842	84.5	2207	1885	85.4	2342	1957	83.6
Unknown	21	17	81.0	12	10	83.3	9	7	77.8
Wales Total	38212	28879	75.6	18637	14280	76.6	19568	14598	74.6

¹ Timings of immunisation sessions vary between HBs, immunisation sessions have now concluded for the 2024-25 academic year.

Table 10c. Uptake of MenACWY vaccine in teenagers reaching 16 years of age between 01/09/24 and 31/08/25 (School Year 11) and resident on 30/09/25, with breakdown of coverage for sex.

Area	Resident children			Resident girls	MenACWY (girls)		Resident boys	MenACWY (boys)		
	(n)	(n)	(%)		(n)	(n)		(%)	(n)	(n)
<u>Aneurin Bevan University HB</u>										
Blaenau Gwent LA	825	535	64.8	390	261	66.9	435	274	63.0	
Caerphilly LA	2212	1445	65.3	1065	711	66.8	1147	734	64.0	
Monmouthshire LA	1138	747	65.6	557	383	68.8	581	364	62.7	
Newport LA	2266	1301	57.4	1059	629	59.4	1206	672	55.7	
Torfaen LA	1183	752	63.6	550	365	66.4	632	387	61.2	
Health Board Total	7624	4780	62.7	3621	2349	64.9	4001	2431	60.8	
<u>Betsi Cadwaladr University HB</u>										
Anglesey LA	827	584	70.6	395	304	77.0	432	280	64.8	
Conwy LA	1245	928	74.5	624	482	77.2	621	446	71.8	
Denbighshire LA	1195	833	69.7	601	446	74.2	594	387	65.2	
Flintshire LA	1809	1387	76.7	878	687	78.2	931	700	75.2	
Gwynedd LA	1317	1032	78.4	642	524	81.6	675	508	75.3	
Wrexham LA	1647	1252	76.0	779	605	77.7	868	647	74.5	
Health Board Total	8040	6016	74.8	3919	3048	77.8	4121	2968	72.0	
<u>Cardiff and Vale University HB</u>										
Cardiff LA	4704	3182	67.6	2325	1577	67.8	2376	1605	67.6	
Vale of Glamorgan LA	1725	1224	71.0	831	600	72.2	894	624	69.8	
Health Board Total	6429	4406	68.5	3156	2177	69.0	3270	2229	68.2	
<u>Cwm Taf Morgannwg University HB</u>										
Bridgend LA	1689	1337	79.2	776	628	80.9	913	709	77.7	
Merthyr Tydfil LA	757	553	73.1	396	300	75.8	361	253	70.1	
Rhondda Cynon Taf LA	2996	2391	79.8	1467	1210	82.5	1528	1181	77.3	
Health Board Total	5442	4281	78.7	2639	2138	81.0	2802	2143	76.5	
<u>Hywel Dda University HB</u>										
Carmarthenshire LA	2165	1741	80.4	1078	871	80.8	1087	870	80.0	
Ceredigion LA	621	544	87.6	313	279	89.1	308	265	86.0	
Pembrokeshire LA	1353	967	71.5	692	502	72.5	661	465	70.3	
Health Board Total	4139	3252	78.6	2083	1652	79.3	2056	1600	77.8	
<u>Powys Teaching HB</u>										
Health Board Total	1345	1006	74.8	648	511	78.9	697	495	71.0	
<u>Swansea Bay University HB</u>										
Neath Port Talbot LA	1704	1409	82.7	825	686	83.2	878	723	82.3	
Swansea LA	2813	2380	84.6	1358	1166	85.9	1455	1214	83.4	
Health Board Total	4517	3789	83.9	2183	1852	84.8	2333	1937	83.0	
Unknown	24	11	45.8	12	8	66.7	12	3	25.0	
Wales Total	37560	27541	73.3	18261	13735	75.2	19292	13806	71.6	

¹ Timings of immunisation sessions vary between HBs, immunisation sessions have now concluded for the 2024-25 academic year.

Table 11. Uptake of MenACWY vaccine in teenagers reaching 14, 15, 16 and 17 years of age between 01/09/24 and 31/08/25 and resident on 30/09/25.

Area	14 years (2024-25 School Year 9) ¹			15 years (2024-25 School Year 10)			16 years (2024-25 School Year 11)			17 years (2024-25 School Year 12)		
	Resident children (n)	MenACWY (n)	(%)	Resident children (n)	MenACWY (n)	(%)	Resident children (n)	MenACWY (n)	(%)	Resident children (n)	MenACWY (n)	(%)
Aneurin Bevan University HB												
Blaenau Gwent LA	823	530	64.4	846	568	67.1	825	535	64.8	875	615	70.3
Caerphilly LA	2280	1616	70.9	2279	1650	72.4	2212	1445	65.3	2293	1560	68.0
Monmouthshire LA	1068	782	73.2	1129	841	74.5	1138	747	65.6	1144	809	70.7
Newport LA	2325	1553	66.8	2278	1516	66.5	2266	1301	57.4	2343	1382	59.0
Torfaen LA	1216	857	70.5	1205	875	72.6	1183	752	63.6	1160	789	68.0
Health Board Total	7712	5338	69.2	7737	5450	70.4	7624	4780	62.7	7815	5155	66.0
Betsi Cadwaladr University HB												
Anglesey LA	851	571	67.1	816	565	69.2	827	584	70.6	823	656	79.7
Conwy LA	1328	838	63.1	1357	952	70.2	1245	928	74.5	1271	1024	80.6
Denbighshire LA	1247	707	56.7	1209	803	66.4	1195	833	69.7	1268	895	70.6
Flintshire LA	1847	1307	70.8	1867	1446	77.5	1809	1387	76.7	1825	1471	80.6
Gwynedd LA	1344	902	67.1	1404	1016	72.4	1317	1032	78.4	1314	1140	86.8
Wrexham LA	1715	1208	70.4	1675	1259	75.2	1647	1252	76.0	1667	1335	80.1
Health Board Total	8332	5533	66.4	8328	6041	72.5	8040	6016	74.8	8168	6521	79.8
Cardiff and Vale University HB												
Cardiff LA	4780	3167	66.3	4667	3294	70.6	4704	3182	67.6	4676	3343	71.5
Vale of Glamorgan LA	1750	1175	67.1	1762	1276	72.4	1725	1224	71.0	1715	1362	79.4
Health Board Total	6530	4342	66.5	6429	4570	71.1	6429	4406	68.5	6391	4705	73.6
Cwm Taf Morgannwg University HB												
Bridgend LA	1859	1491	80.2	1810	1515	83.7	1689	1337	79.2	1722	1481	86.0
Merthyr Tydfil LA	764	598	78.3	697	535	76.8	757	553	73.1	775	613	79.1
Rhondda Cynon Taf LA	3169	2535	80.0	3020	2438	80.7	2996	2391	79.8	2952	2450	83.0
Health Board Total	5792	4624	79.8	5527	4488	81.2	5442	4281	78.7	5449	4544	83.4
Hywel Dda University HB												
Carmarthenshire LA	2340	1808	77.3	2175	1762	81.0	2165	1741	80.4	2345	1943	82.9
Ceredigion LA	682	558	81.8	749	640	85.4	621	544	87.6	655	567	86.6
Pembrokeshire LA	1394	985	70.7	1415	1050	74.2	1353	967	71.5	1359	904	66.5
Health Board Total	4416	3351	75.9	4339	3452	79.6	4139	3252	78.6	4359	3414	78.3
Powys Teaching HB												
Health Board Total	1371	1123	81.9	1282	1019	79.5	1345	1006	74.8	1524	1209	79.3
Swansea Bay University HB												
Neath Port Talbot LA	1800	1441	80.1	1694	1417	83.6	1704	1409	82.7	1694	1458	86.1
Swansea LA	2953	2458	83.2	2855	2425	84.9	2813	2380	84.6	3013	2595	86.1
Health Board Total	4753	3899	82.0	4549	3842	84.5	4517	3789	83.9	4707	4053	86.1
Unknown	23	8	34.8	21	17	81.0	24	11	45.8	37	24	64.9
Wales Total	38929	28218	72.5	38212	28879	75.6	37560	27541	73.3	38450	29625	77.0

¹ Timings of immunisation sessions vary between HBs, immunisation sessions have now concluded for the 2024-25 academic year.

Table 12. MMR, Td/IPV and MenACWY vaccine uptake in children reaching their 14th birthday between 01/09/24 and 31/08/25 and resident on 30/09/25, with breakdown of MMR1 and MMR2 coverage by sex.

Area	Resident children		Teenage 3 in 1 booster ^{1,2}						MenACWY ²		Resident girls		MMR1 (girls)		MMR2 (girls)		Resident boys		MMR1 (boys)		MMR2 (boys)	
	(n)	(n) (%)	(n)	(%)	(n)	(%)	(n)	(%)	(n)	(%)	(n)	(n) (%)	(n) (%)	(n)	(%)	(n)	(n) (%)	(n) (%)	(n)	(n) (%)	(n)	(%)
Aneurin Bevan University HB	(n)	(n) (%)	(n)	(%)	(n)	(%)	(n)	(%)	(n)	(%)	(n)	(n) (%)	(n) (%)	(n)	(%)	(n)	(n) (%)	(n) (%)	(n)	(n) (%)	(n)	(%)
Blaenau Gwent LA	823	786 95.5	758	92.1	557	67.7	530	64.4	371	349 94.1	339	91.4	452	437 96.7	419	92.7						
Caerphilly LA	2280	2222 97.5	2183	95.7	1624	71.2	1616	70.9	1141	1116 97.8	1101	96.5	1138	1105 97.1	1081	95.0						
Monmouthshire LA	1068	997 93.4	959	89.8	782	73.2	782	73.2	525	493 93.9	479	91.2	543	504 92.8	480	88.4						
Newport LA	2325	2117 91.1	2028	87.2	1555	66.9	1553	66.8	1180	1072 90.8	1030	87.3	1144	1044 91.3	997	87.2						
Torfaen LA	1216	1172 96.4	1131	93.0	864	71.1	857	70.5	589	565 95.9	549	93.2	627	607 96.8	582	92.8						
Health Board Total	7712	7294 94.6	7059 91.5	5382 69.8	5338 69.2				3806	3595 94.5	3498 91.9		3904	3697 94.7	3559 91.2							
Betsi Cadwaladr University HB																						
Anglesey LA	851	836 98.2	824	96.8	585	68.7	571	67.1	413	408 98.8	400	96.9	438	428 97.7	424	96.8						
Conwy LA	1328	1278 96.2	1249	94.1	824	62.0	838	63.1	632	608 96.2	592	93.7	696	670 96.3	657	94.4						
Denbighshire LA	1247	1192 95.6	1169	93.7	696	55.8	707	56.7	622	589 94.7	576	92.6	624	603 96.6	593	95.0						
Flintshire LA	1847	1801 97.5	1777	96.2	1309	70.9	1307	70.8	917	894 97.5	883	96.3	930	907 97.5	894	96.1						
Gwynedd LA	1344	1293 96.2	1274	94.8	919	68.4	902	67.1	688	659 95.8	651	94.6	656	634 96.6	623	95.0						
Wrexham LA	1715	1658 96.7	1620	94.5	1214	70.8	1208	70.4	866	840 97.0	823	95.0	849	818 96.3	797	93.9						
Health Board Total	8332	8058 96.7	7913 95.0	5547 66.6	5533 66.4				4138	3998 96.6	3925 94.9		4193	4060 96.8	3988 95.1							
Cardiff and Vale University HB																						
Cardiff LA	4780	4520 94.6	4301	90.0	3179	66.5	3167	66.3	2268	2147 94.7	2036	89.8	2512	2373 94.5	2265	90.2						
Vale of Glamorgan LA	1750	1697 97.0	1627	93.0	1173	67.0	1175	67.1	876	850 97.0	817	93.3	874	847 96.9	810	92.7						
Health Board Total	6530	6217 95.2	5928 90.8	4352 66.6	4342 66.5				3144	2997 95.3	2853 90.7		3386	3220 95.1	3075 90.8							
Cwm Taf Morgannwg University HB																						
Bridgend LA	1859	1822 98.0	1776	95.5	1487	80.0	1491	80.2	876	859 98.1	837	95.5	983	963 98.0	939	95.5						
Merthyr Tydfil LA	764	741 97.0	720	94.2	599	78.4	598	78.3	367	359 97.8	348	94.8	397	382 96.2	372	93.7						
Rhondda Cynon Taf LA	3169	3084 97.3	2984	94.2	2526	79.7	2535	80.0	1568	1523 97.1	1481	94.5	1599	1559 97.5	1501	93.9						
Health Board Total	5792	5647 97.5	5480 94.6	4612 79.6	4624 79.8				2811	2741 97.5	2666 94.8		2979	2904 97.5	2812 94.4							
Hywel Dda University HB																						
Carmarthenshire LA	2340	2246 96.0	2209	94.4	1811	77.4	1808	77.3	1144	1105 96.6	1093	95.5	1196	1141 95.4	1116	93.3						
Ceredigion LA	682	659 96.6	647	94.9	556	81.5	558	81.8	329	315 95.7	312	94.8	353	344 97.5	335	94.9						
Pembrokeshire LA	1394	1345 96.5	1296	93.0	994	71.3	985	70.7	713	685 96.1	659	92.4	680	660 97.1	637	93.7						
Health Board Total	4416	4250 96.2	4152 94.0	3361 76.1	3351 75.9				2186	2105 96.3	2064 94.4		2229	2145 96.2	2088 93.7							
Powys Teaching HB																						
Health Board Total	1371	1306 95.3	1273 92.9	1117 81.5	1123 81.9				680	652 95.9	635 93.4		690	654 94.8	638 92.5							
Swansea Bay University HB																						
Neath Port Talbot LA	1800	1762 97.9	1731	96.2	1433	79.6	1441	80.1	871	855 98.2	843	96.8	929	907 97.6	888	95.6						
Swansea LA	2953	2853 96.6	2765	93.6	2443	82.7	2458	83.2	1381	1329 96.2	1285	93.0	1572	1524 96.9	1480	94.1						
Health Board Total	4753	4615 97.1	4496 94.6	3876 81.5	3899 82.0				2252	2184 97.0	2128 94.5		2501	2431 97.2	2368 94.7							
Unknown	23	15 65.2	15	65.2	8	34.8	8	34.8	10	6 60.0	6	60.0	13	9 69.2	9	69.2						
Wales Total	38929	37402 96.1	36316 93.3	28255 72.6	28218 72.5				19027	18278 96.1	17775 93.4		19895	19120 96.1	18537 93.2							

¹ Teenage booster dose of diphtheria, tetanus and polio (diphtheria used as proxy).

² Timings of immunisation sessions vary between HBs, immunisation sessions have now concluded for the 2024-25 academic year.

Table 13. MMR, Td/IPV and MenACWY vaccine uptake in children reaching their 15th birthday between 01/09/24 and 31/08/25 and resident on 30/09/25, with breakdown of MMR1 and MMR2 coverage by sex.

Area	Resident children		MMR1		MMR2		Teenage 3 in 1 booster ¹		MenACWY		Resident girls		MMR1 (girls)		MMR2 (girls)		Resident boys		MMR1 (boys)		MMR2 (boys)		
	(n)	(n)	(%)	(n)	(%)	(n)	(%)	(n)	(%)	(n)	(n)	(%)	(n)	(%)	(n)	(%)	(n)	(n)	(%)	(n)	(%)		
Aneurin Bevan University HB																							
Blaenau Gwent LA	846	807	95.4	783	92.6	570	67.4	568	67.1	432	414	95.8	398	92.1	414	393	94.9	385	93.0				
Caerphilly LA	2279	2212	97.1	2165	95.0	1653	72.5	1650	72.4	1102	1063	96.5	1041	94.5	1177	1149	97.6	1124	95.5				
Monmouthshire LA	1129	1042	92.3	1005	89.0	842	74.6	841	74.5	544	505	92.8	485	89.2	584	537	92.0	520	89.0				
Newport LA	2278	2092	91.8	2028	89.0	1520	66.7	1516	66.5	1121	1033	92.1	1002	89.4	1157	1059	91.5	1026	88.7				
Torfaen LA	1205	1159	96.2	1118	92.8	878	72.9	875	72.6	601	582	96.8	564	93.8	604	577	95.5	554	91.7				
Health Board Total	7737	7312	94.5	7099	91.8	5463	70.6	5450	70.4	3800	3597	94.7	3490	91.8	3936	3715	94.4	3609	91.7				
Betsi Cadwaladr University HB																							
Anglesey LA	816	801	98.2	790	96.8	576	70.6	565	69.2	395	388	98.2	383	97.0	421	413	98.1	407	96.7				
Conwy LA	1357	1312	96.7	1280	94.3	942	69.4	952	70.2	672	647	96.3	629	93.6	684	665	97.2	651	95.2				
Denbighshire LA	1209	1144	94.6	1127	93.2	802	66.3	803	66.4	591	557	94.2	550	93.1	618	587	95.0	577	93.4				
Flintshire LA	1867	1806	96.7	1773	95.0	1451	77.7	1446	77.5	871	845	97.0	829	95.2	996	961	96.5	944	94.8				
Gwynedd LA	1404	1370	97.6	1344	95.7	1022	72.8	1016	72.4	647	628	97.1	616	95.2	757	742	98.0	728	96.2				
Wrexham LA	1675	1606	95.9	1581	94.4	1262	75.3	1259	75.2	825	783	94.9	770	93.3	850	823	96.8	811	95.4				
Health Board Total	8328	8039	96.5	7895	94.8	6055	72.7	6041	72.5	4001	3848	96.2	3777	94.4	4326	4191	96.9	4118	95.2				
Cardiff and Vale University HB																							
Cardiff LA	4667	4393	94.1	4194	89.9	3287	70.4	3294	70.6	2286	2151	94.1	2051	89.7	2379	2242	94.2	2143	90.1				
Vale of Glamorgan LA	1762	1704	96.7	1660	94.2	1275	72.4	1276	72.4	869	841	96.8	813	93.6	893	863	96.6	847	94.8				
Health Board Total	6429	6097	94.8	5854	91.1	4562	71.0	4570	71.1	3155	2992	94.8	2864	90.8	3272	3105	94.9	2990	91.4				
Cwm Taf Morgannwg University HB																							
Bridgend LA	1810	1770	97.8	1731	95.6	1515	83.7	1515	83.7	900	873	97.0	856	95.1	910	897	98.6	875	96.2				
Merthyr Tydfil LA	697	676	97.0	664	95.3	533	76.5	535	76.8	313	302	96.5	299	95.5	384	374	97.4	365	95.1				
Rhondda Cynon Taf LA	3020	2941	97.4	2867	94.9	2428	80.4	2438	80.7	1515	1478	97.6	1435	94.7	1504	1463	97.3	1432	95.2				
Health Board Total	5527	5387	97.5	5262	95.2	4476	81.0	4488	81.2	2728	2653	97.3	2590	94.9	2798	2734	97.7	2672	95.5				
Hywel Dda University HB																							
Carmarthenshire LA	2175	2090	96.1	2060	94.7	1769	81.3	1762	81.0	1031	990	96.0	980	95.1	1144	1100	96.2	1080	94.4				
Ceredigion LA	749	727	97.1	717	95.7	645	86.1	640	85.4	373	363	97.3	361	96.8	376	364	96.8	356	94.7				
Pembrokeshire LA	1415	1365	96.5	1337	94.5	1059	74.8	1050	74.2	703	678	96.4	666	94.7	712	687	96.5	671	94.2				
Health Board Total	4339	4182	96.4	4114	94.8	3473	80.0	3452	79.6	2107	2031	96.4	2007	95.3	2232	2151	96.4	2107	94.4				
Powys Teaching HB																							
Health Board Total	1282	1218	95.0	1192	93.0	1020	79.6	1019	79.5	627	599	95.5	587	93.6	653	619	94.8	605	92.6				
Swansea Bay University HB																							
Neath Port Talbot LA	1694	1665	98.3	1642	96.9	1417	83.6	1417	83.6	825	810	98.2	798	96.7	869	855	98.4	844	97.1				
Swansea LA	2855	2762	96.7	2684	94.0	2414	84.6	2425	84.9	1382	1337	96.7	1296	93.8	1473	1425	96.7	1388	94.2				
Health Board Total	4549	4427	97.3	4326	95.1	3831	84.2	3842	84.5	2207	2147	97.3	2094	94.9	2342	2280	97.4	2232	95.3				
Unknown	21	20	95.2	20	95.2	17	81.0	17	81.0	12	12	100.0	12	100.0	9	8	88.9	8	88.9				
Wales Total	38212	36682	96.0	35762	93.6	28897	75.6	28879	75.6	18637	17879	95.9	17421	93.5	19568	18803	96.1	18341	93.7				

¹ Teenage booster dose of diphtheria, tetanus and polio (diphtheria used as proxy).

Table 14. MMR, Td/IPV and MenACWY vaccine uptake in children reaching their 16th birthday between 01/09/24 and 31/08/25 and resident on 30/09/25, with breakdown of MMR1 and MMR2 coverage by sex.

Area	Resident children		Teenage 3 in 1 booster ¹				MenACWY		Resident girls		MMR1 (girls)		MMR2 (girls)		Resident boys		MMR1 (boys)		MMR2 (boys)		
	(n)	(%)	(n)	(%)	(n)	(%)	(n)	(%)	(n)	(%)	(n)	(%)	(n)	(%)	(n)	(%)	(n)	(%)	(n)	(%)	
<u>Aneurin Bevan University HB</u>																					
Blaenau Gwent LA	825	783	94.9	759	92.0	539	65.3	535	64.8	390	367	94.1	355	91.0	435	416	95.6	404	92.9		
Caerphilly LA	2212	2135	96.5	2073	93.7	1454	65.7	1445	65.3	1065	1030	96.7	999	93.8	1147	1105	96.3	1074	93.6		
Monmouthshire LA	1138	1018	89.5	989	86.9	750	65.9	747	65.6	557	497	89.2	483	86.7	581	521	89.7	506	87.1		
Newport LA	2266	2053	90.6	1962	86.6	1300	57.4	1301	57.4	1059	956	90.3	915	86.4	1206	1097	91.0	1047	86.8		
Torfaen LA	1183	1138	96.2	1097	92.7	759	64.2	752	63.6	550	534	97.1	509	92.5	632	604	95.6	588	93.0		
Health Board Total	7624	7127	93.5	6880	90.2	4802	63.0	4780	62.7	3621	3384	93.5	3261	90.1	4001	3743	93.6	3619	90.5		
<u>Betsi Cadwaladr University HB</u>																					
Anglesey LA	827	818	98.9	809	97.8	602	72.8	584	70.6	395	393	99.5	390	98.7	432	425	98.4	419	97.0		
Conwy LA	1245	1216	97.7	1196	96.1	924	74.2	928	74.5	624	612	98.1	600	96.2	621	604	97.3	596	96.0		
Denbighshire LA	1195	1123	94.0	1107	92.6	832	69.6	833	69.7	601	562	93.5	555	92.3	594	561	94.4	552	92.9		
Flintshire LA	1809	1735	95.9	1704	94.2	1384	76.5	1387	76.7	878	848	96.6	832	94.8	931	887	95.3	872	93.7		
Gwynedd LA	1317	1277	97.0	1264	96.0	1028	78.1	1032	78.4	642	626	97.5	622	96.9	675	651	96.4	642	95.1		
Wrexham LA	1647	1591	96.6	1553	94.3	1265	76.8	1252	76.0	779	752	96.5	733	94.1	868	839	96.7	820	94.5		
Health Board Total	8040	7760	96.5	7633	94.9	6035	75.1	6016	74.8	3919	3793	96.8	3732	95.2	4121	3967	96.3	3901	94.7		
<u>Cardiff and Vale University HB</u>																					
Cardiff LA	4704	4368	92.9	4181	88.9	3187	67.8	3182	67.6	2325	2170	93.3	2070	89.0	2376	2198	92.5	2111	88.8		
Vale of Glamorgan LA	1725	1653	95.8	1596	92.5	1222	70.8	1224	71.0	831	799	96.1	768	92.4	894	854	95.5	828	92.6		
Health Board Total	6429	6021	93.7	5777	89.9	4409	68.6	4406	68.5	3156	2969	94.1	2838	89.9	3270	3052	93.3	2939	89.9		
<u>Cwm Taf Morgannwg University HB</u>																					
Bridgend LA	1689	1647	97.5	1613	95.5	1338	79.2	1337	79.2	776	761	98.1	739	95.2	913	886	97.0	874	95.7		
Merthyr Tydfil LA	757	734	97.0	717	94.7	552	72.9	553	73.1	396	387	97.7	378	95.5	361	347	96.1	339	93.9		
Rhondda Cynon Taf LA	2996	2921	97.5	2864	95.6	2382	79.5	2391	79.8	1467	1427	97.3	1405	95.8	1528	1494	97.8	1459	95.5		
Health Board Total	5442	5302	97.4	5194	95.4	4272	78.5	4281	78.7	2639	2575	97.6	2522	95.6	2802	2727	97.3	2672	95.4		
<u>Hywel Dda University HB</u>																					
Cardiff LA	2165	2073	95.8	2030	93.8	1749	80.8	1741	80.4	1078	1034	95.9	1016	94.2	1087	1039	95.6	1014	93.3		
Ceredigion LA	621	599	96.5	589	94.8	545	87.8	544	87.6	313	303	96.8	298	95.2	308	296	96.1	291	94.5		
Pembrokeshire LA	1353	1286	95.0	1244	91.9	980	72.4	967	71.5	692	664	96.0	640	92.5	661	622	94.1	604	91.4		
Health Board Total	4139	3958	95.6	3863	93.3	3274	79.1	3252	78.6	2083	2001	96.1	1954	93.8	2056	1957	95.2	1909	92.9		
<u>Powys Teaching HB</u>																					
Health Board Total	1345	1271	94.5	1233	91.7	1063	79.0	1006	74.8	648	617	95.2	602	92.9	697	654	93.8	631	90.5		
<u>Swansea Bay University HB</u>																					
Neath Port Talbot LA	1704	1670	98.0	1643	96.4	1405	82.5	1409	82.7	825	805	97.6	793	96.1	878	864	98.4	849	96.7		
Swansea LA	2813	2709	96.3	2642	93.9	2374	84.4	2380	84.6	1358	1303	95.9	1275	93.9	1455	1406	96.6	1367	94.0		
Health Board Total	4517	4379	96.9	4285	94.9	3779	83.7	3789	83.9	2183	2108	96.6	2068	94.7	2333	2270	97.3	2216	95.0		
Unknown	24	15	62.5	15	62.5	12	50.0	11	45.8	12	9	75.0	9	75.0	12	6	50.0	6	50.0		
Wales Total	37560	35833	95.4	34880	92.9	27646	73.6	27541	73.3	18261	17456	95.6	16986	93.0	19292	18376	95.3	17893	92.7		

¹ Teenage booster dose of diphtheria, tetanus and polio (diphtheria used as proxy).

Table 15. MMR, Td/IPV and MenACWY vaccine uptake in children reaching their 16th birthday between 01/07/25 and 30/09/25 and resident on 30/09/25, with breakdown of MMR1 and MMR2 coverage by sex.

Area	Resident children		Teenage 3 in 1 booster ¹							Resident girls		MMR1 (girls)		MMR2 (girls)		Resident boys		MMR1 (boys)		MMR2 (boys)	
	(n)	(%)	(n)	(%)	(n)	(%)	(n)	(%)	(n)	(%)	(n)	(%)	(n)	(%)	(n)	(%)	(n)	(%)	(n)	(%)	
<u>Aneurin Bevan University HB</u>	(n)	(%)	(n)	(%)	(n)	(%)	(n)	(%)	(n)	(%)	(n)	(%)	(n)	(%)	(n)	(%)	(n)	(%)	(n)	(%)	
Blaenau Gwent LA	200	95.5	185	92.5	137	68.5	138	69.0	102	96.1	96	94.1	98	94.9	89	90.8	200	95.5	185	92.5	
Caerphilly LA	589	95.6	551	93.5	403	68.4	399	67.7	279	95.7	259	92.8	310	95.5	292	94.2	589	95.6	551	93.5	
Monmouthshire LA	275	89.8	237	86.2	169	61.5	170	61.8	132	90.2	116	87.9	143	89.5	121	84.6	275	89.8	237	86.2	
Newport LA	588	91.2	511	86.9	347	59.0	344	58.5	294	91.8	256	87.1	294	90.5	255	86.7	588	91.2	511	86.9	
Torfaen LA	307	97.1	290	94.5	197	64.2	194	63.2	150	98.7	142	94.7	157	95.5	148	94.3	307	97.1	290	94.5	
Health Board Total	1959	93.7	1774	90.6	1253	64.0	1245	63.6	957	94.3	869	90.8	1002	93.1	905	90.3	1959	93.7	1774	90.6	
<u>Betsi Cadwaladr University HB</u>	(n)	(%)	(n)	(%)	(n)	(%)	(n)	(%)	(n)	(%)	(n)	(%)	(n)	(%)	(n)	(%)	(n)	(%)	(n)	(%)	
Anglesey LA	187	98.4	182	97.3	133	71.1	128	68.4	91	100.0	90	98.9	96	96.9	92	95.8	187	98.4	182	97.3	
Conwy LA	342	97.1	320	93.6	241	70.5	247	72.2	152	96.7	141	92.8	189	97.9	179	94.7	342	97.1	320	93.6	
Denbighshire LA	300	95.7	287	95.7	192	64.0	191	63.7	144	93.8	135	93.8	156	97.4	152	97.4	300	95.7	287	95.7	
Flintshire LA	491	96.5	466	94.9	380	77.4	382	77.8	234	97.0	222	94.9	257	96.1	244	94.9	491	96.5	466	94.9	
Gwynedd LA	352	95.5	334	94.9	259	73.6	261	74.1	159	94.3	149	93.7	193	96.4	185	95.9	352	95.5	334	94.9	
Wrexham LA	468	95.5	441	94.2	362	77.4	354	75.6	222	94.1	205	92.3	246	96.7	236	95.9	468	95.5	441	94.2	
Health Board Total	2140	96.3	2030	94.9	1567	73.2	1563	73.0	1002	95.7	942	94.0	1137	96.8	1088	95.7	2140	96.3	2030	94.9	
<u>Cardiff and Vale University HB</u>	(n)	(%)	(n)	(%)	(n)	(%)	(n)	(%)	(n)	(%)	(n)	(%)	(n)	(%)	(n)	(%)	(n)	(%)	(n)	(%)	
Cardiff LA	1201	92.8	1063	88.5	824	68.6	824	68.6	612	92.3	535	87.4	588	93.5	528	89.8	1201	92.8	1063	88.5	
Vale of Glamorgan LA	440	95.0	402	91.4	303	68.9	303	68.9	207	95.7	188	90.8	233	94.4	214	91.8	440	95.0	402	91.4	
Health Board Total	1641	93.4	1465	89.3	1127	68.7	1127	68.7	819	93.2	723	88.3	821	93.8	742	90.4	1641	93.4	1465	89.3	
<u>Cwm Taf Morgannwg University HB</u>	(n)	(%)	(n)	(%)	(n)	(%)	(n)	(%)	(n)	(%)	(n)	(%)	(n)	(%)	(n)	(%)	(n)	(%)	(n)	(%)	
Bridgend LA	446	97.3	428	96.0	359	80.5	358	80.3	227	97.4	219	96.5	219	97.3	209	95.4	446	97.3	428	96.0	
Merthyr Tydfil LA	190	97.4	179	94.2	135	71.1	134	70.5	99	97.0	93	93.9	91	97.8	86	94.5	190	97.4	179	94.2	
Rhondda Cynon Taf LA	710	98.0	683	96.2	533	75.1	538	75.8	349	97.4	332	95.1	360	98.9	351	97.5	710	98.0	683	96.2	
Health Board Total	1346	97.7	1290	95.8	1027	76.3	1030	76.5	675	97.3	644	95.4	670	98.2	646	96.4	1346	97.7	1290	95.8	
<u>Hywel Dda University HB</u>	(n)	(%)	(n)	(%)	(n)	(%)	(n)	(%)	(n)	(%)	(n)	(%)	(n)	(%)	(n)	(%)	(n)	(%)	(n)	(%)	
Carmarthenshire LA	579	95.2	539	93.1	471	81.3	472	81.5	279	96.8	268	96.1	300	93.7	271	90.3	579	95.2	539	93.1	
Ceredigion LA	160	95.6	150	93.8	137	85.6	136	85.0	80	95.0	75	93.8	80	96.3	75	93.8	160	95.6	150	93.8	
Pembrokeshire LA	338	95.6	317	93.8	245	72.5	243	71.9	175	96.0	166	94.9	163	95.1	151	92.6	338	95.6	317	93.8	
Health Board Total	1077	95.4	1006	93.4	853	79.2	851	79.0	534	96.3	509	95.3	543	94.5	497	91.5	1077	95.4	1006	93.4	
<u>Powys Teaching HB</u>	(n)	(%)	(n)	(%)	(n)	(%)	(n)	(%)	(n)	(%)	(n)	(%)	(n)	(%)	(n)	(%)	(n)	(%)	(n)	(%)	
Health Board Total	378	95.2	348	92.1	303	80.2	290	76.7	193	95.9	181	93.8	185	94.6	167	90.3	378	95.2	348	92.1	
<u>Swansea Bay University HB</u>	(n)	(%)	(n)	(%)	(n)	(%)	(n)	(%)	(n)	(%)	(n)	(%)	(n)	(%)	(n)	(%)	(n)	(%)	(n)	(%)	
Neath Port Talbot LA	439	98.2	421	95.9	361	82.2	363	82.7	217	97.7	206	94.9	222	98.6	215	96.8	439	98.2	421	95.9	
Swansea LA	728	96.6	689	94.6	607	83.4	609	83.7	382	95.8	358	93.7	346	97.4	331	95.7	728	96.6	689	94.6	
Health Board Total	1167	97.2	1110	95.1	968	82.9	972	83.3	599	96.5	564	94.2	568	97.9	546	96.1	1167	97.2	1110	95.1	
Unknown	3	33.3	1	33.3	1	33.3	1	33.3	0	0.0	0	0.0	3	33.3	1	33.3	3	33.3	1	33.3	
Wales Total	9711	95.4	9024	92.9	7099	73.1	7079	72.9	4779	95.4	4432	92.7	4929	95.5	4592	93.2	9711	95.4	9024	92.9	

¹ Teenage booster dose of diphtheria, tetanus and polio (diphtheria used as proxy).

Table 16. Uptake of BCG immunisation in children reaching their 1st, 2nd, 5th and 16th birthdays between 01/07/25 and 30/09/25 and resident on 30/09/25.¹

Area	1 yr			2 yrs			5 yrs			16 yrs		
	Resident children	BCG Immunised	(%)	Resident children	BCG Immunised	(%)	Resident children	BCG Immunised	(%)	Resident children	BCG Immunised	(%)
<u>Aneurin Bevan University HB</u>	(n)	(n)	(%)	(n)	(n)	(%)	(n)	(n)	(%)	(n)	(n)	(%)
Blaenau Gwent LA	159	9	5.7	177	5	2.8	200	9	4.5	200	5	2.5
Caerphilly LA	403	17	4.2	424	13	3.1	436	12	2.8	589	18	3.1
Monmouthshire LA	190	13	6.8	176	6	3.4	231	12	5.2	275	17	6.2
Newport LA	449	90	20.0	443	83	18.7	533	84	15.8	588	95	16.2
Torfaen LA	228	14	6.1	246	12	4.9	269	11	4.1	307	6	2.0
Health Board Total	1429	143	10.0	1466	119	8.1	1669	128	7.7	1959	141	7.2
<u>Betsi Cadwaladr University HB</u>												
Anglesey LA	139	0	0.0	144	0	0.0	169	2	1.2	187	14	7.5
Conwy LA	215	12	5.6	249	16	6.4	265	11	4.2	342	22	6.4
Denbighshire LA	189	18	9.5	212	18	8.5	243	17	7.0	300	18	6.0
Flintshire LA	336	22	6.5	350	34	9.7	401	36	9.0	491	28	5.7
Gwynedd LA	241	3	1.2	242	5	2.1	284	11	3.9	352	11	3.1
Wrexham LA	316	29	9.2	319	24	7.5	357	40	11.2	468	39	8.3
Health Board Total	1436	84	5.8	1516	97	6.4	1719	117	6.8	2140	132	6.2
<u>Cardiff and Vale University HB</u>												
Cardiff LA	937	277	29.6	847	239	28.2	979	290	29.6	1201	251	20.9
Vale of Glamorgan LA	301	26	8.6	305	28	9.2	358	21	5.9	440	27	6.1
Health Board Total	1238	303	24.5	1152	267	23.2	1337	311	23.3	1641	278	16.9
<u>Cwm Taf Morgannwg Univeristy HB</u>												
Bridgend LA	314	28	8.9	364	12	3.3	383	10	2.6	446	12	2.7
Merthyr Tydfil LA	145	15	10.3	153	13	8.5	138	8	5.8	190	14	7.4
Rhondda Cynon Taf LA	520	27	5.2	541	22	4.1	649	33	5.1	710	27	3.8
Health Board Total	979	70	7.2	1058	47	4.4	1170	51	4.4	1346	53	3.9
<u>Hywel Dda University HB</u>												
Carmarthenshire LA	377	20	5.3	408	19	4.7	476	21	4.4	579	31	5.4
Ceredigion LA	143	6	4.2	153	8	5.2	131	7	5.3	160	6	3.8
Pembrokeshire LA	229	7	3.1	230	12	5.2	265	11	4.2	338	11	3.3
Health Board Total	749	33	4.4	791	39	4.9	872	39	4.5	1077	48	4.5
<u>Powys Teaching Health Board</u>												
Health Board Total	238	12	5.0	259	5	1.9	258	6	2.3	378	16	4.2
<u>Swansea Bay University HB</u>												
Neath Port Talbot LA	303	18	5.9	329	17	5.2	339	17	5.0	439	17	3.9
Swansea LA	572	91	15.9	513	76	14.8	580	88	15.2	728	80	11.0
Health Board Total	875	109	12.5	842	93	11.0	919	105	11.4	1167	97	8.3
Unknown	8	1	0.0	7	0	0.0	1	0	0.0	3	0	0.0
Wales Total	6952	755	10.9	7091	667	9.4	7945	757	9.5	9711	765	7.9

¹ Data reflects immunisations given and recorded on the NCCHD (following notifications to local Child Health Administration Offices), may be subject to under-reporting. BCG is not a routinely scheduled immunisation.

Table 17. Uptake of hepatitis B immunisation in children, reaching their 1st, 2nd, and 5th birthdays during between 01/07/25 and 30/09/25 and resident on 30/09/25 and percentage who are recorded as completing doses 1 to 4.¹

Area	1yr					2yrs						5yrs					
	Resident children	Babies at risk of perinatal infection	1 dose	2 doses	3 doses	Resident children	Babies at risk of perinatal infection	1 dose	2 doses	3 doses	4 doses	Resident children	Babies at risk of perinatal infection	1 dose	2 doses	3 doses	4 doses
	(n)	(n)	(%)	(%)	(%)	(n)	(n)	(%)	(%)	(%)	(%)	(n)	(n)	(%)	(%)	(%)	(%)
Aneurin Bevan UHB	1429	0	-	-	-	1466	3	66.7	66.7	66.7	66.7	1669	3	100.0	100.0	100.0	100.0
Betsi Cadwaladr UHB	1436	2	100.0	100.0	100.0	1516	0	-	-	-	-	1719	2	100.0	100.0	100.0	100.0
Cardiff and Vale UHB	1238	2	100.0	100.0	100.0	1152	3	100.0	100.0	100.0	100.0	1337	3	100.0	100.0	100.0	100.0
Cwm Taf Morgannwg UHB	979	0	-	-	-	1058	2	100.0	100.0	100.0	100.0	1170	2	100.0	100.0	100.0	100.0
Hywel Dda UHB	749	1	100.0	100.0	100.0	791	0	-	-	-	-	872	0	-	-	-	-
Powys Teaching HB	238	0	-	-	-	259	0	-	-	-	-	258	0	-	-	-	-
Swansea Bay UHB	875	5	100.0	100.0	100.0	842	0	-	-	-	-	919	0	-	-	-	-
Unknown	8	0	-	-	-	7	0	-	-	-	-	1	0	-	-	-	-
Wales Total	6952	10	100.0	100.0	100.0	7091	8	87.5	87.5	87.5	87.5	7945	10	100.0	100.0	100.0	100.0

¹Data reflects immunisations given and recorded on the Public Health Wales case and incident management system (Tarian) of babies born to hepatitis B positive mothers. The first dose refers to the monovalent dose given at birth, with doses 2, 3 and 4 reflecting any Hep-B containing vaccine, given either as part of the selective hepatitis b vaccination programme or routine immunisation schedule.