



A Picture of Health in The Vale of Glamorgan



The Vale of Glamorgan has a profile of health generally better than the average for Wales. The majority of areas in The Vale of Glamorgan are less deprived than the average for Wales however, there are some pockets of relative deprivation. There is a growing older population that will impact on the demand for health services in the future.

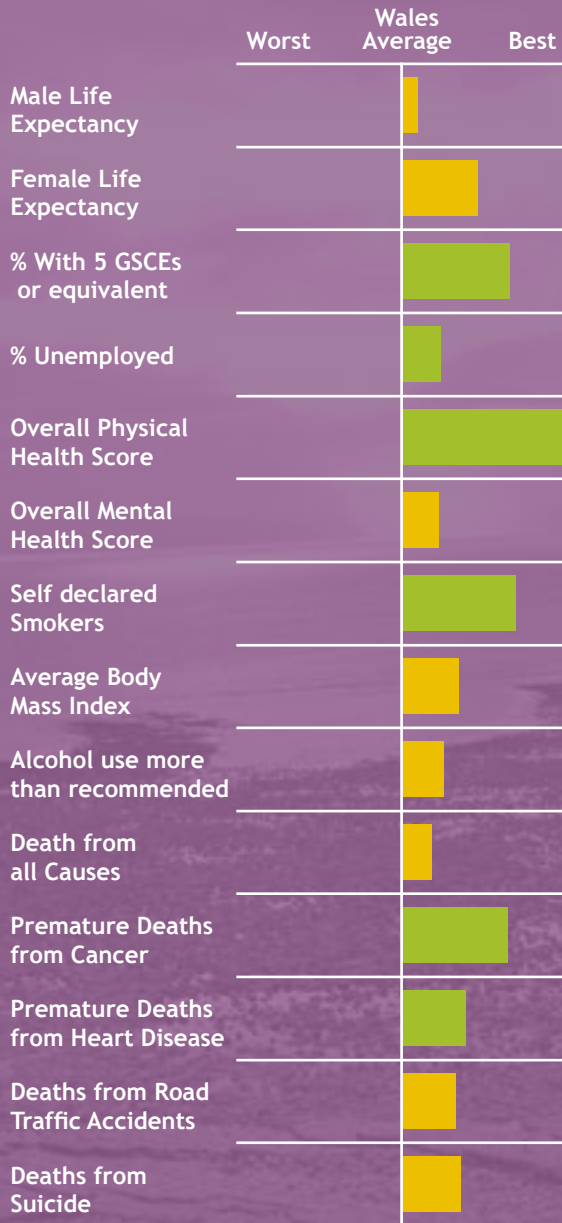
Positives for health:

- Education and Unemployment, key determinants of overall health, are significantly better than the average for Wales.

Challenges for the community:

- The Vale of Glamorgan is generally better than the Welsh average, but death rates and male life expectancy highlight potential issues.

This local picture of health is a first attempt at raising awareness of general health with the public by the Wales Centre for Health. As such we welcome feedback and discussion about how best to engage and inform the public about general health issues.



Notes:

The spine chart shows the relative position of an area between the best and worst results in Wales. **Green bars** show a result that is significantly better than the Wales Average. **Red bars** show a result significantly worse than the Wales average. **Yellow bars** show results within the average range.

For more information please see the Wales Centre for health website www.wch.wales.nhs.uk, or contact 029 2022 7744.

