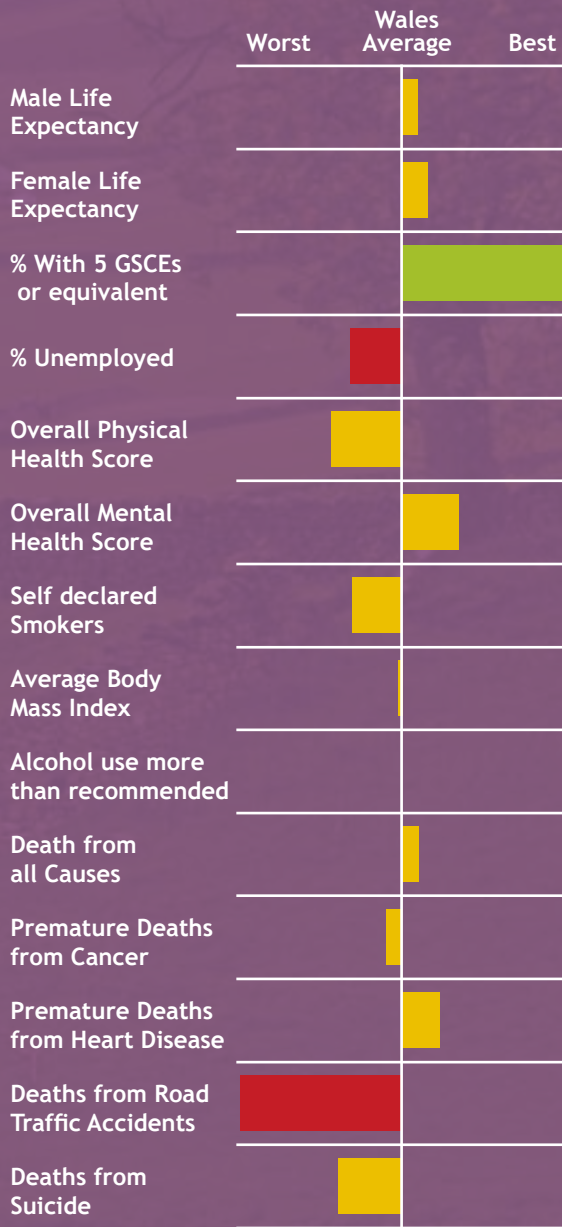




A Picture of Health in Pembrokeshire



Pembrokeshire has a profile of health largely similar to the average for Wales. The majority of small areas in Pembrokeshire are less deprived than the average for Wales however, there are some pockets of relative deprivation. There is a growing older population that will impact on the demand for health services in the future.

Positives for health:

- Education, a key determinant of overall health, is significantly better than the average for Wales.

Challenges for the community:

- Pembrokeshire has an overall rate of unemployment that is significantly higher than the rate for Wales.
- There are also worse rates for Road Traffic Accidents in Pembrokeshire compared with Wales, this may be a reflection of its largely rural nature.

This local picture of health is a first attempt at raising awareness of general health with the public by the Wales Centre for Health. As such we welcome feedback and discussion about how best to engage and inform the public about general health issues.



Notes:

The spine chart shows the relative position of an area between the best and worst results in Wales. **Green bars** show a result that is significantly better than the Wales Average. **Red bars** show a result significantly worse than the Wales average. **Yellow bars** show results within the average range.

For more information please see the Wales Centre for health website www.wch.wales.nhs.uk, or contact 029 2022 7744.

