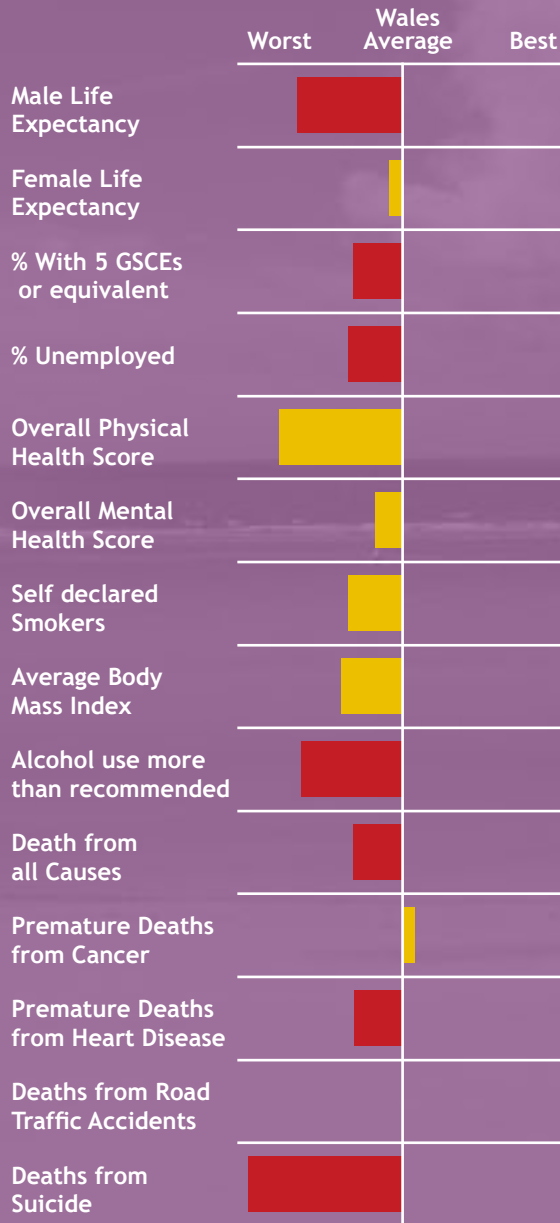




A Picture of Health in Neath Port Talbot



Neath Port Talbot has a profile of health largely worse than the average for Wales. The majority of small areas in Neath Port Talbot are more deprived than the average for Wales however, there are some pockets of relative low-deprivation. There is a growing older population that will have an impact on demand for health services in the future.

Challenges for the community:

- Neath Port Talbot has a worse life expectancy compared with Wales for males. Education and unemployment, key determinants of individual health, are significantly worse than Wales as is alcohol consumption, premature death from heart disease and suicide.

This local picture of health is a first attempt at raising awareness of general health with the public by the Wales Centre for Health. As such we welcome feedback and discussion about how best to engage and inform the public about general health issues.



Notes:

The spine chart shows the relative position of an area between the best and worst results in Wales. **Green bars** show a result that is significantly better than the Wales Average. **Red bars** show a result significantly worse than the Wales average. **Yellow bars** show results within the average range.

For more information please see the Wales Centre for health website www.wch.wales.nhs.uk, or contact 029 2022 7744.

