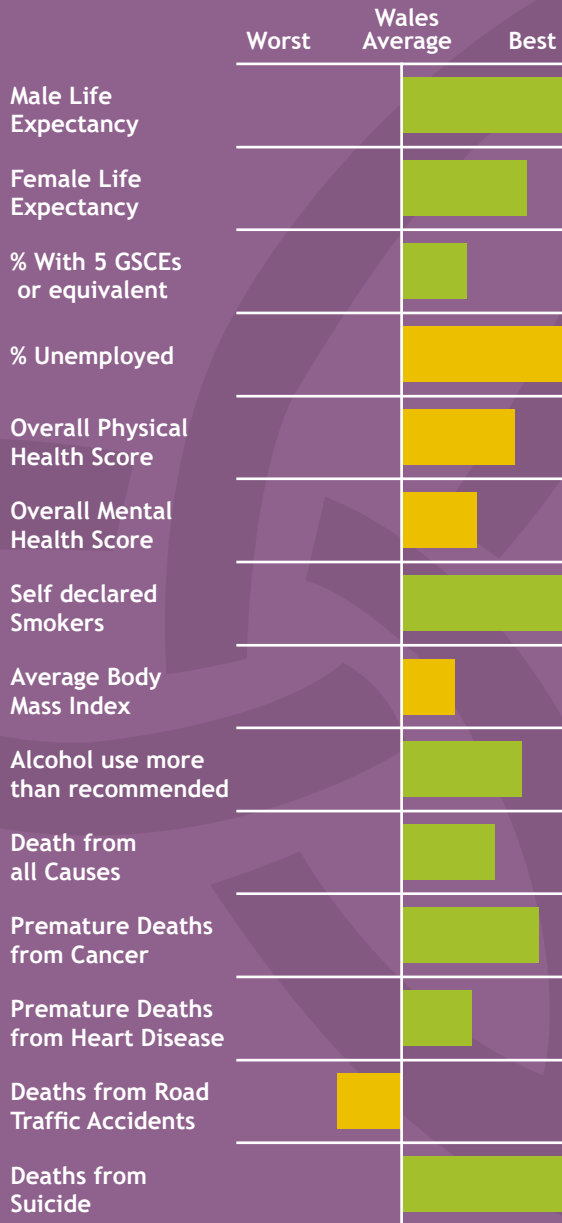




A Picture of Health in Monmouthshire



Monmouthshire has a profile of health largely better than the average for Wales. The majority of small areas in Monmouthshire are less deprived than the average for Wales however, there are some pockets of relative deprivation. There is a growing older population that will have an impact on the demand for health services in the future.

Positives for health:

- Education and Unemployment, key determinants of overall health, are significantly better than the average for Wales. Monmouthshire also has a low rate for suicide, smoking and premature deaths from cancer compared with Wales.
- Life expectancy for males and females is also better for Monmouthshire than the Wales average.

Challenges for the community:

- Monmouthshire has a worse rate than the Wales average for Road Traffic Accidents, this may be because it is a largely rural area and the difference is not significant.

This local picture of health is a first attempt at raising awareness of general health with the public by the Wales Centre for Health. As such we welcome feedback and discussion about how best to engage and inform the public about general health issues.



Notes:

The spine chart shows the relative position of an area between the best and worst results in Wales. **Green bars** show a result that is significantly better than the Wales Average. **Red bars** show a result significantly worse than the Wales average. **Yellow bars** show results within the average range.

For more information please see the Wales Centre for health website www.wch.wales.nhs.uk, or contact 029 2022 7744.

