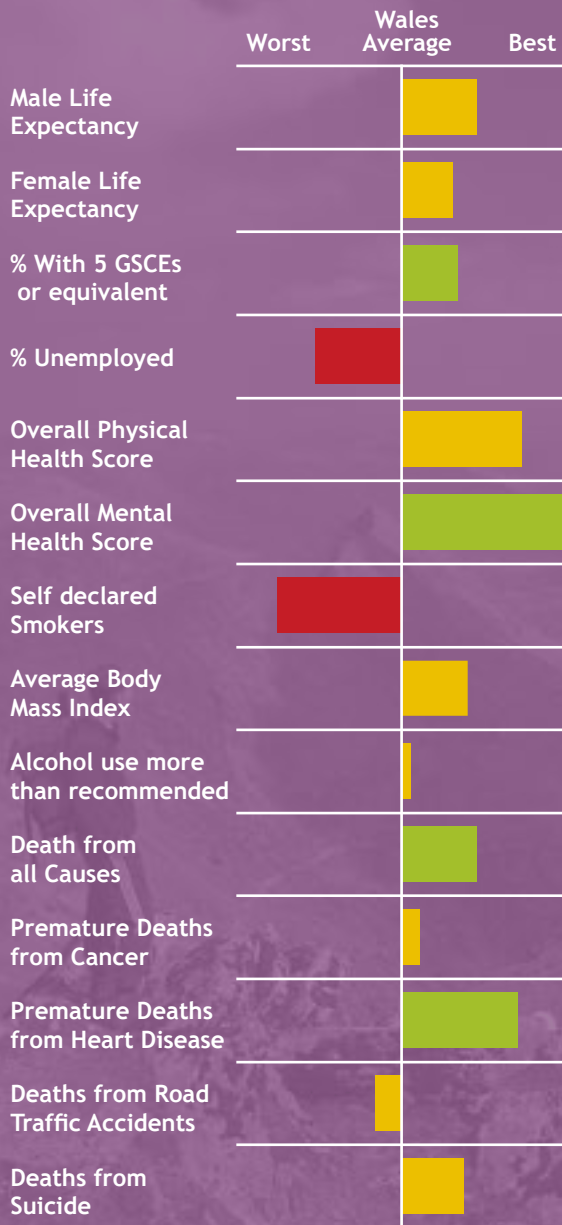




A Picture of Health in Gwynedd



Gwynedd has a profile of health that is generally better than the rest of Wales. There are two indicators at the summary level that show challenges for the community. As a county, Gwynedd has issues with its rural nature which makes access to services difficult. There is, as with other places in Wales, a growing elderly population.

Positives for health:

- People in Gwynedd have the highest score for overall mental health well-being in Wales. In addition, qualifications, deaths from all causes and premature deaths from heart disease are significantly better than the average for Wales.

Challenges for the community:

- The smoking rate, as with the Isle of Anglesey, is one of the highest in Wales. There are also challenges relating to unemployment and deprivation in this community. The influence of rurality and access to services will increasingly be an issue.

This local picture of health is a first attempt at raising awareness of general health with the public by the Wales Centre for Health. As such we welcome feedback and discussion about how best to engage and inform the public about general health issues.



Notes:

The spine chart shows the relative position of an area between the best and worst results in Wales. **Green bars** show a result that is significantly better than the Wales Average. **Red bars** show a result significantly worse than the Wales average. **Yellow bars** show results within the average range.

For more information please see the Wales Centre for health website www.wch.wales.nhs.uk, or contact 029 2022 7744.

