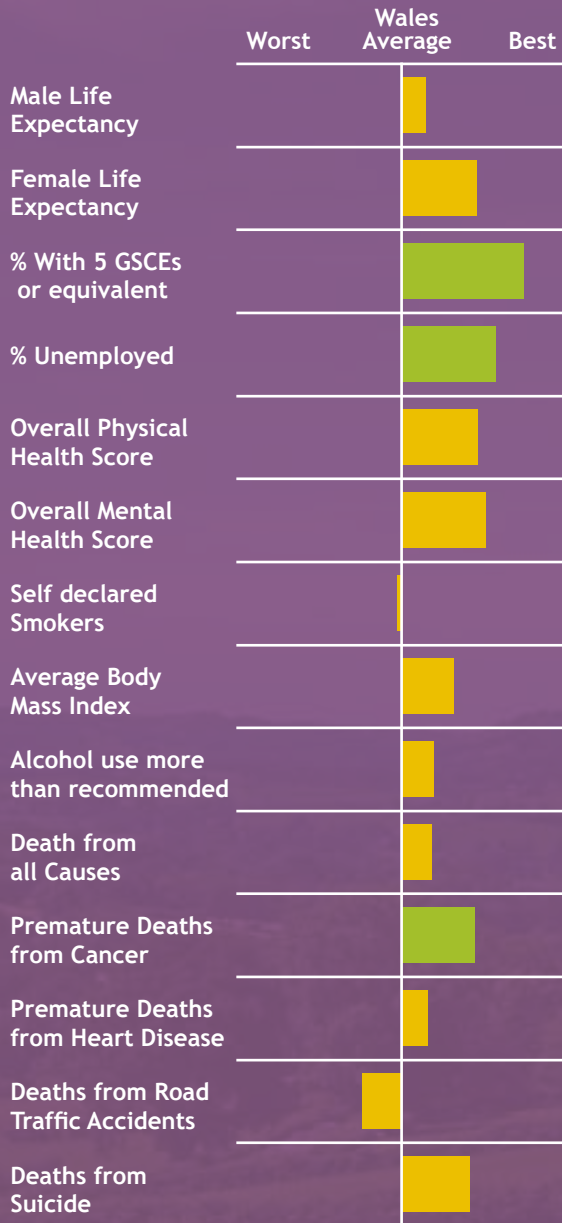




A Picture of Health in Flintshire



Flintshire has a general profile of health that is better than the average for Wales with three indicators significantly better than the Wales average. Flintshire has a majority of its small areas in the least deprived quartile. There is, as with similar communities in North Wales, a growing elderly population that will impact on the future demand for health services.

Positives for health:

- Flintshire has a significantly better rate of people who have 5 GCSEs or equivalent than the Wales average. In addition, the rate of unemployment is significantly less than the average. Death rates from Cancers in people under the age of 75, are also significantly lower than Wales as a whole.

Challenges for the community:

- The rate of deaths from Road Traffic Accidents in Flintshire is greater than the average for Wales.

This local picture of health is a first attempt at raising awareness of general health with the public by the Wales Centre for Health. As such we welcome feedback and discussion about how best to engage and inform the public about general health issues.



Notes:

The spine chart shows the relative position of an area between the best and worst results in Wales. **Green bars** show a result that is significantly better than the Wales Average. **Red bars** show a result significantly worse than the Wales average. **Yellow bars** show results within the average range.

For more information please see the Wales Centre for health website www.wch.wales.nhs.uk, or contact 029 2022 7744.

