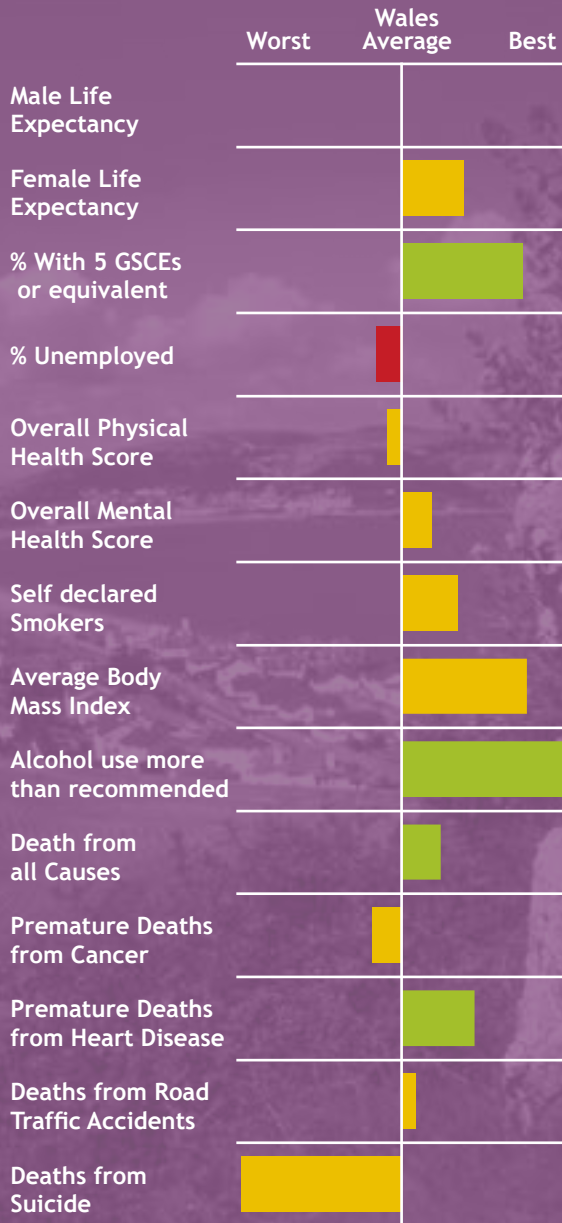




A Picture of Health in Conwy



Conwy has a general profile of health that is better than the average for Wales. Conwy is a tourist destination that alters its character during the summer months. There is a higher percentage of people aged 65 and over than any other part of Wales.

Positives for health:

- Conwy has a significantly better rate of people who have 5 GCSEs or equivalent than the Wales average. In this community there is less alcohol consumption than for Wales which may impact on the rate of deaths from heart disease.

Challenges for the community:

- Unemployment is an issue for this community as it has one of the worst rates in Wales. In addition, this area has the highest rate of death from Suicide in Wales, although this translates into small numbers.

This local picture of health is a first attempt at raising awareness of general health with the public by the Wales Centre for Health. As such we welcome feedback and discussion about how best to engage and inform the public about general health issues.



Notes:

The spine chart shows the relative position of an area between the best and worst results in Wales. **Green bars** show a result that is significantly better than the Wales Average. **Red bars** show a result significantly worse than the Wales average. **Yellow bars** show results within the average range.

For more information please see the Wales Centre for health website www.wch.wales.nhs.uk, or contact 029 2022 7744.

