



A Picture of Health in Bridgend



Bridgend is a community with a slightly worse overall health profile than the average for Wales. This community has nearly one third of it's areas in the 25% most deprived areas of Wales.

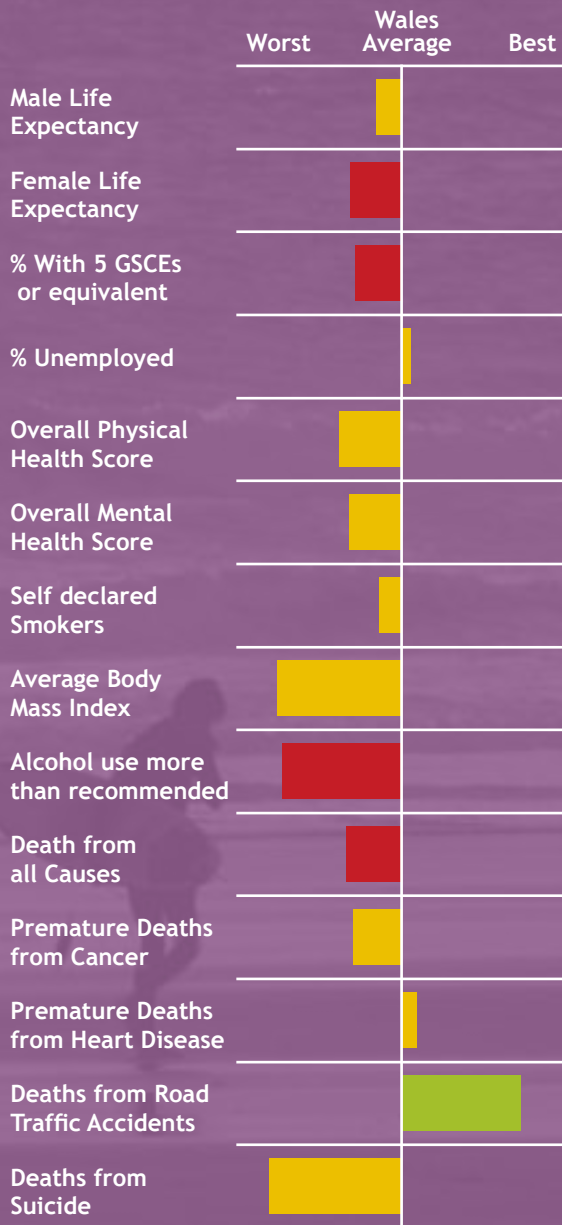
Positives for health:

- The amount of deaths from Road Traffic Accidents is significantly better than the rest of Wales.

Challenges for the community:

- Alcohol use is significantly worse than the Wales average. Alcohol has a significant impact on lifestyle and long-term health.
- Female life expectancy is worse than the Wales rate.

This local picture of health is a first attempt at raising awareness of general health with the public by the Wales Centre for Health. As such we welcome feedback and discussion about how best to engage and inform the public about general health issues.



Notes:

The spine chart shows the relative position of an area between the best and worst results in Wales. **Green bars** show a result that is significantly better than the Wales Average. **Red bars** show a result significantly worse than the Wales average. **Yellow bars** show results within the average range.

For more information please see the Wales Centre for health website www.wch.wales.nhs.uk, or contact 029 2022 7744.

