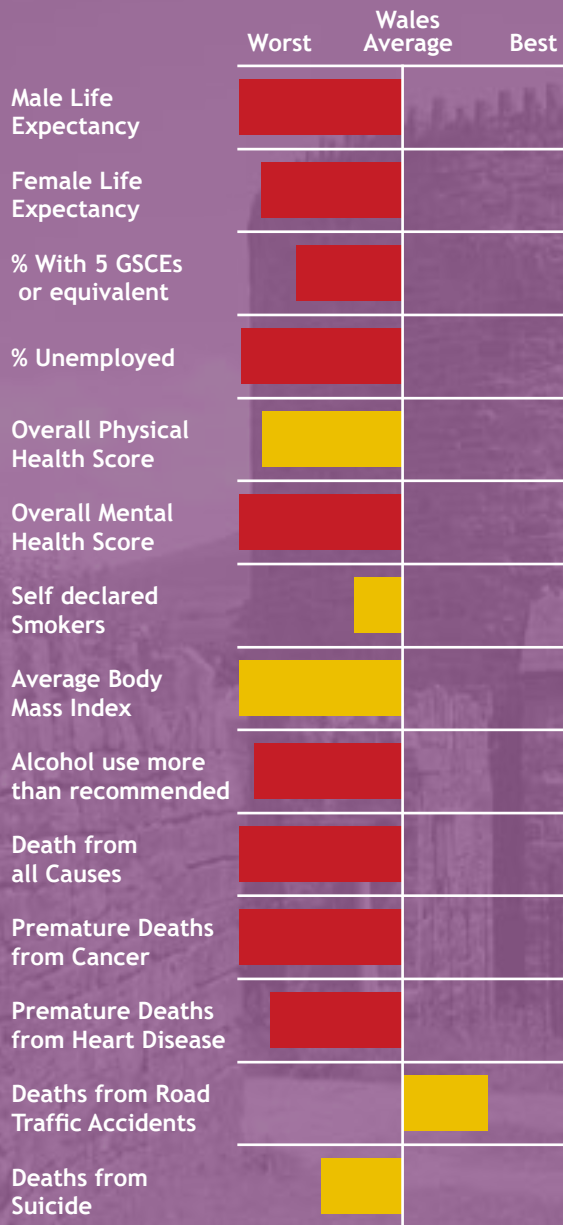




A Picture of Health in Blaenau Gwent



Blaenau Gwent has one of the worst overall health profiles in Wales compared to the average. Many of the reasons are historic and underlying. However, health is being improved in this community.

Positives for health:

- Life expectancy has consistently improved since 1996 for men and women.
- Smoking rates are within the average range compared with Wales and are showing sustained improvement.

Challenges for the community:

- Lifestyle outcomes, while generally worse than Wales, are improving.
- Mortality outcomes for Cancer and Heart Disease are significantly worse than the Wales average.

This local picture of health is a first attempt at raising awareness of general health with the public by the Wales Centre for Health. As such we welcome feedback and discussion about how best to engage and inform the public about general health issues.



Notes:

The spine chart shows the relative position of an area between the best and worst results in Wales. **Green bars** show a result that is significantly better than the Wales Average. **Red bars** show a result significantly worse than the Wales average. **Yellow bars** show results within the average range.

For more information please see the Wales Centre for health website www.wch.wales.nhs.uk, or contact 029 2022 7744.





A Picture of Health in Bridgend



Bridgend is a community with a slightly worse overall health profile than the average for Wales. This community has nearly one third of it's areas in the 25% most deprived areas of Wales.

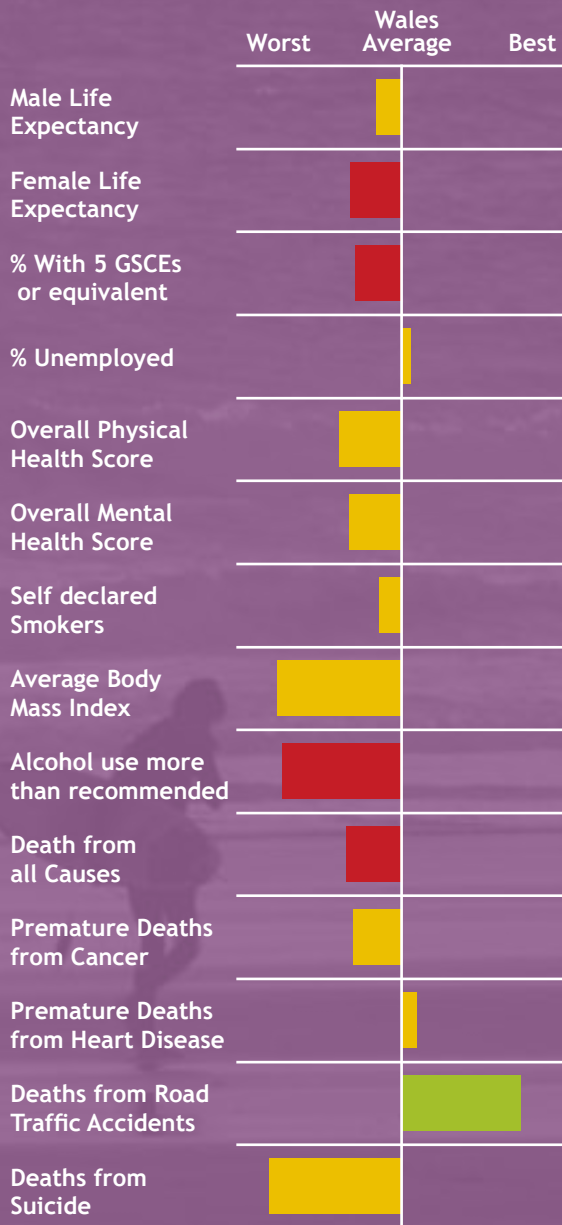
Positives for health:

- The amount of deaths from Road Traffic Accidents is significantly better than the rest of Wales.

Challenges for the community:

- Alcohol use is significantly worse than the Wales average. Alcohol has a significant impact on lifestyle and long-term health.
- Female life expectancy is worse than the Wales rate.

This local picture of health is a first attempt at raising awareness of general health with the public by the Wales Centre for Health. As such we welcome feedback and discussion about how best to engage and inform the public about general health issues.



Notes:

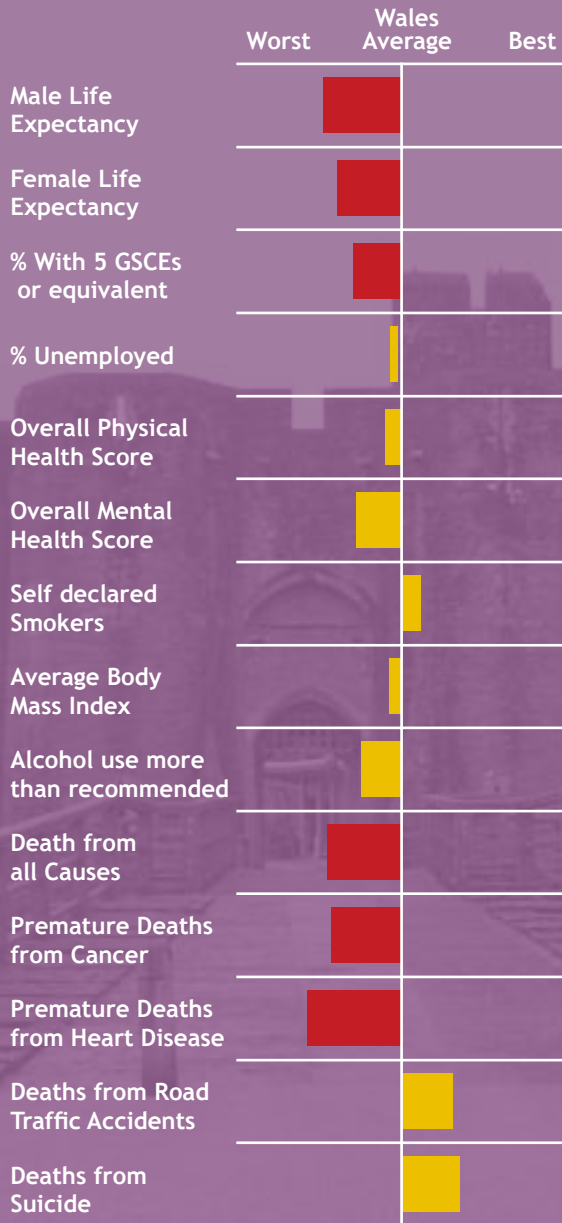
The spine chart shows the relative position of an area between the best and worst results in Wales. **Green bars** show a result that is significantly better than the Wales Average. **Red bars** show a result significantly worse than the Wales average. **Yellow bars** show results within the average range.

For more information please see the Wales Centre for health website www.wch.wales.nhs.uk, or contact 029 2022 7744.





A Picture of Health in Caerphilly



Caerphilly has an overall health profile that is generally worse than the average for Wales. One particular factor is the increasing number of older people in Caerphilly. One result of this is an anticipated rise in age-related illnesses, future demand on health services and deaths from cancers and heart disease.

Positives for health:

- Deaths from Suicide and Road Traffic Accidents are lower than the average for Wales. Lifestyle factors, such as Alcohol and Smoking are not as prevalent as in other communities.

Challenges for the community:

- The legacy of ill-health in older members of the area has an impact on overall death rates from Cancer and heart disease and future demand on health services.
- The gap between the best male life expectancy in Wales and Caerphilly has widened since 1991, but has improved between 2002 - 2004.

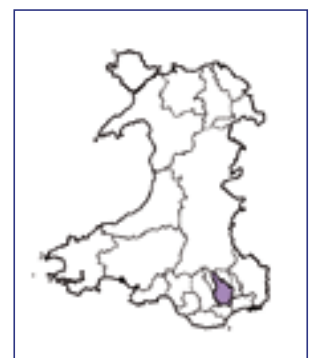
This local picture of health is a first attempt at raising awareness of general health with the public by the Wales Centre for Health. As such we welcome feedback and discussion about how best to engage and inform the public about general health issues.



Notes:

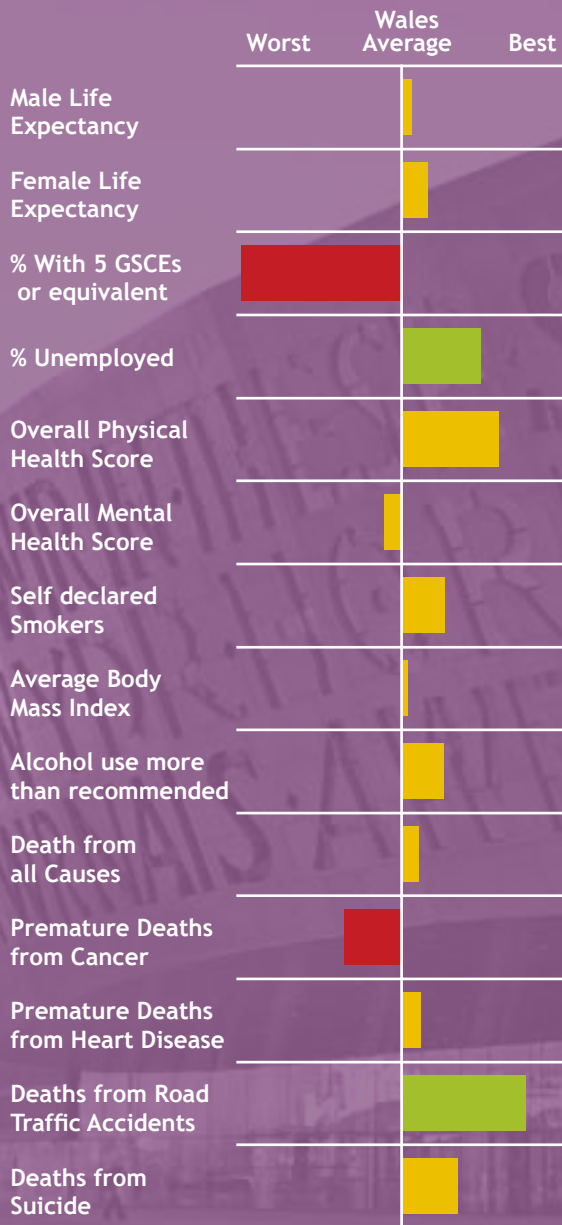
The spine chart shows the relative position of an area between the best and worst results in Wales. **Green bars** show a result that is significantly better than the Wales Average. **Red bars** show a result significantly worse than the Wales average. **Yellow bars** show results within the average range.

For more information please see the Wales Centre for health website www.wch.wales.nhs.uk, or contact 029 2022 7744.





A Picture of Health in Cardiff



Cardiff has a general profile of health that is largely the same as the Wales average. It has a population that is growing faster than the national rate, has areas of high deprivation and a higher than average percentage of people from Ethnic minority backgrounds.

Positives for health:

- Cardiff has a significantly lower number of people out of work than the Wales average. It also has a significantly lower number of deaths from Road Traffic Accidents.

Challenges for the community:

- Cardiff has the lowest proportion in Wales of people meeting a general education standard.
- A significantly higher number of people in Cardiff, under the age of 75, die from Cancer than the Wales average.

This local picture of health is a first attempt at raising awareness of general health with the public by the Wales Centre for Health. As such we welcome feedback and discussion about how best to engage and inform the public about general health issues.



Notes:

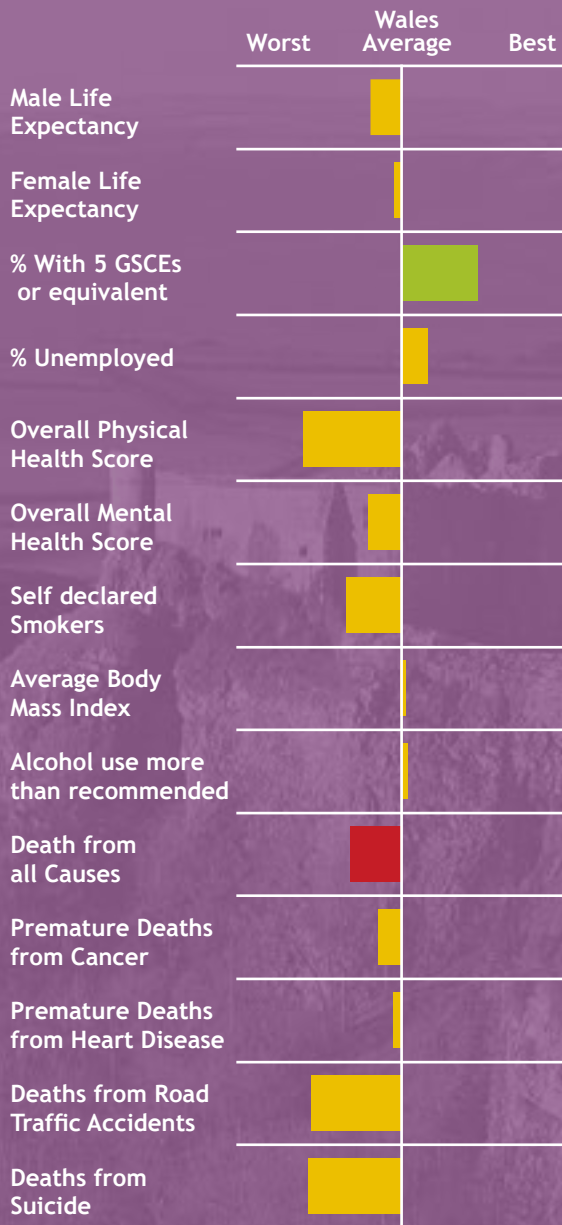
The spine chart shows the relative position of an area between the best and worst results in Wales. **Green bars** show a result that is significantly better than the Wales Average. **Red bars** show a result significantly worse than the Wales average. **Yellow bars** show results within the average range.

For more information please see the Wales Centre for health website www.wch.wales.nhs.uk, or contact 029 2022 7744.





A Picture of Health in Carmarthenshire



Carmarthenshire has a general health profile that is around the same as the average for Wales. The area is currently experiencing an increase in life expectancy for men and women and the older population is living longer. There are some small areas within Carmarthenshire that have high levels of deprivation contributing to poor health.

Positives for health:

- Determinants of health, such as unemployment and education, are better than the average for Wales.
- Carmarthenshire's education rate is significantly better than Wales.

Challenges for the community:

- Smoking rates are higher than the rest of Wales which is likely to have an impact on future health.
- Deaths from Road Traffic Accidents and Suicides appear higher than the rest of Wales.

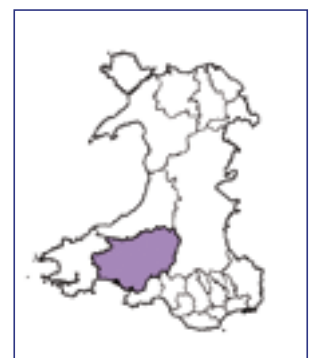
This local picture of health is a first attempt at raising awareness of general health with the public by the Wales Centre for Health. As such we welcome feedback and discussion about how best to engage and inform the public about general health issues.



Notes:

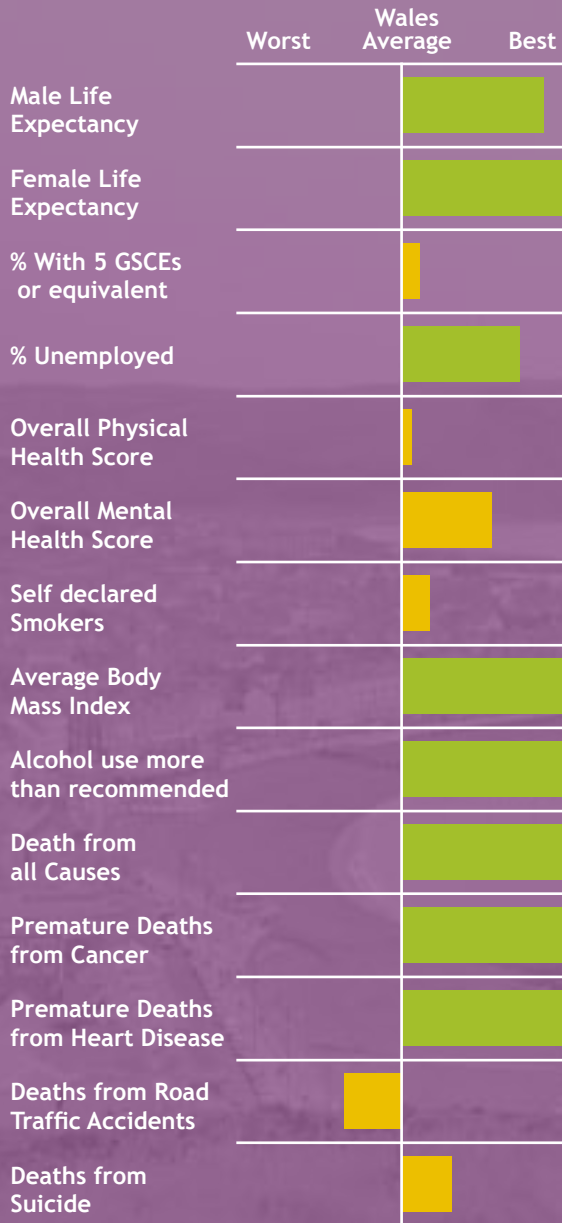
The spine chart shows the relative position of an area between the best and worst results in Wales. **Green bars** show a result that is significantly better than the Wales Average. **Red bars** show a result significantly worse than the Wales average. **Yellow bars** show results within the average range.

For more information please see the Wales Centre for health website www.wch.wales.nhs.uk, or contact 029 2022 7744.





A Picture of Health in Ceredigion



Ceredigion has one of the best general health profiles in Wales. Life expectancy, death rates and some lifestyle indicators are positive. It has an ageing population and a term-time student population that create demands on the delivery of health in the community. One issue for concern is that the majority of small areas in Ceredigion fall within the worst 25% for access to services.

Positives for health:

- Indications from these summary measures show a community that has a healthy lifestyle choices and experience little deprivation.

Challenges for the community:

- The rate for smoking prevalence is disproportionate when compared with other lifestyle indicators.
- Rurality is a factor for this community which will increasingly impact on access to services in coming years.

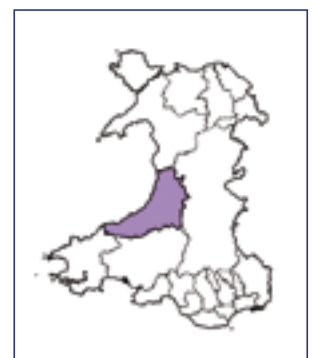
This local picture of health is a first attempt at raising awareness of general health with the public by the Wales Centre for Health. As such we welcome feedback and discussion about how best to engage and inform the public about general health issues.



Notes:

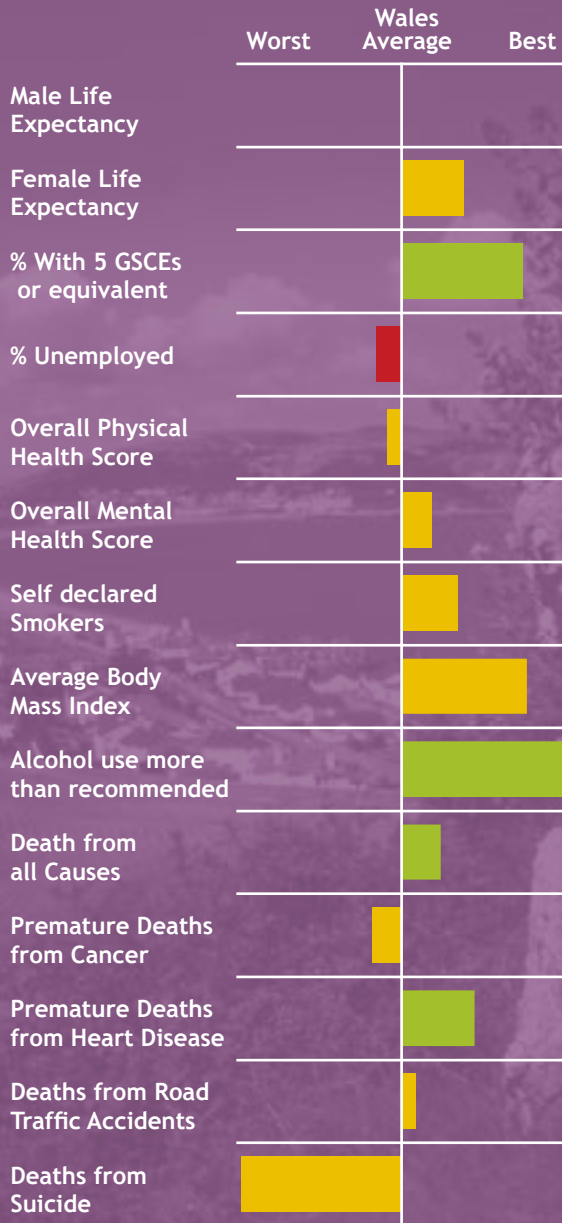
The spine chart shows the relative position of an area between the best and worst results in Wales. **Green bars** show a result that is significantly better than the Wales Average. **Red bars** show a result significantly worse than the Wales average. **Yellow bars** show results within the average range.

For more information please see the Wales Centre for health website www.wch.wales.nhs.uk, or contact 029 2022 7744.





A Picture of Health in Conwy



Conwy has a general profile of health that is better than the average for Wales. Conwy is a tourist destination that alters its character during the summer months. There is a higher percentage of people aged 65 and over than any other part of Wales.

Positives for health:

- Conwy has a significantly better rate of people who have 5 GCSEs or equivalent than the Wales average. In this community there is less alcohol consumption than for Wales which may impact on the rate of deaths from heart disease.

Challenges for the community:

- Unemployment is an issue for this community as it has one of the worst rates in Wales. In addition, this area has the highest rate of death from Suicide in Wales, although this translates into small numbers.

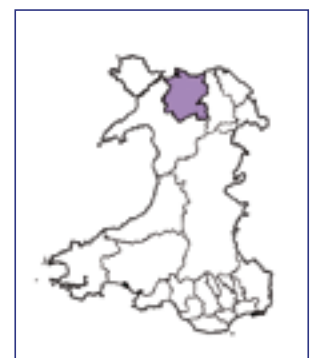
This local picture of health is a first attempt at raising awareness of general health with the public by the Wales Centre for Health. As such we welcome feedback and discussion about how best to engage and inform the public about general health issues.



Notes:

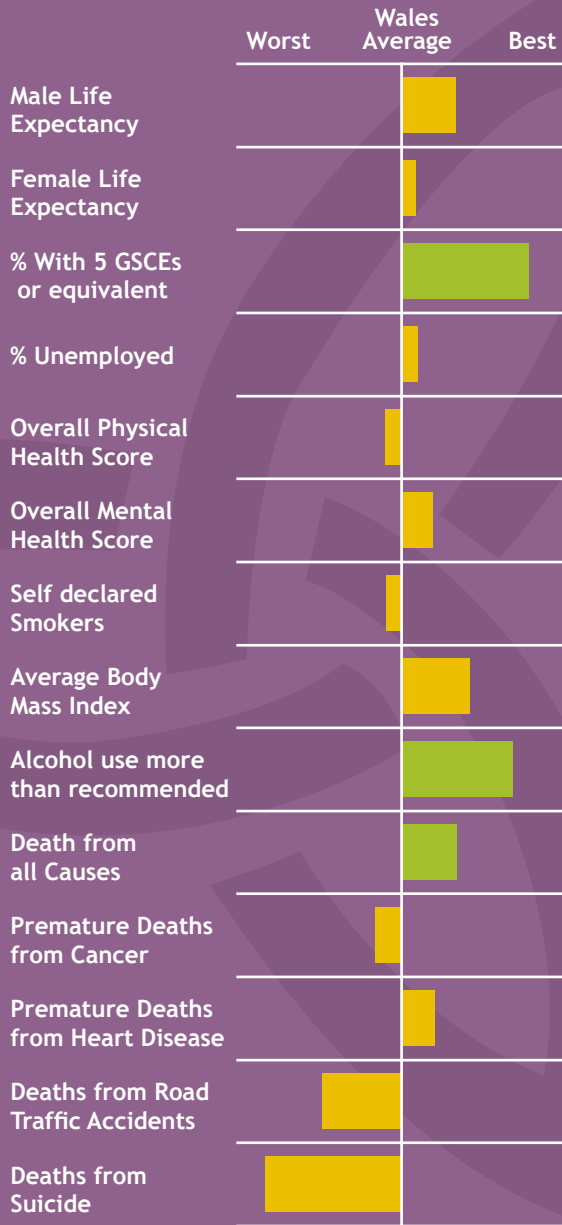
The spine chart shows the relative position of an area between the best and worst results in Wales. **Green bars** show a result that is significantly better than the Wales Average. **Red bars** show a result significantly worse than the Wales average. **Yellow bars** show results within the average range.

For more information please see the Wales Centre for health website www.wch.wales.nhs.uk, or contact 029 2022 7744.





A Picture of Health in Denbighshire



Denbighshire has a general profile of health that is better than the average for Wales. However, some areas of Denbighshire, especially around Rhyl are amongst the most deprived places in Wales. There is also a growing elderly population that will create a demand on healthcare provision in coming years.

Positives for health:

- Denbighshire has a significantly better rate of people who have 5 GCSEs or equivalent than the Wales average. In addition there is less alcohol consumption than for Wales which may impact on the rate of deaths from heart disease.

Challenges for the community:

- Areas of concern for this community include deaths from suicide and Road Traffic Accidents.

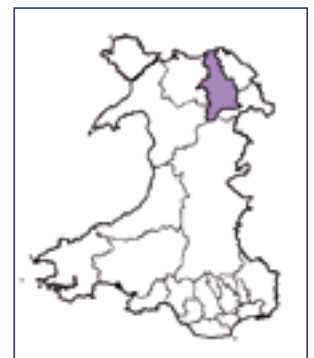
This local picture of health is a first attempt at raising awareness of general health with the public by the Wales Centre for Health. As such we welcome feedback and discussion about how best to engage and inform the public about general health issues.



Notes:

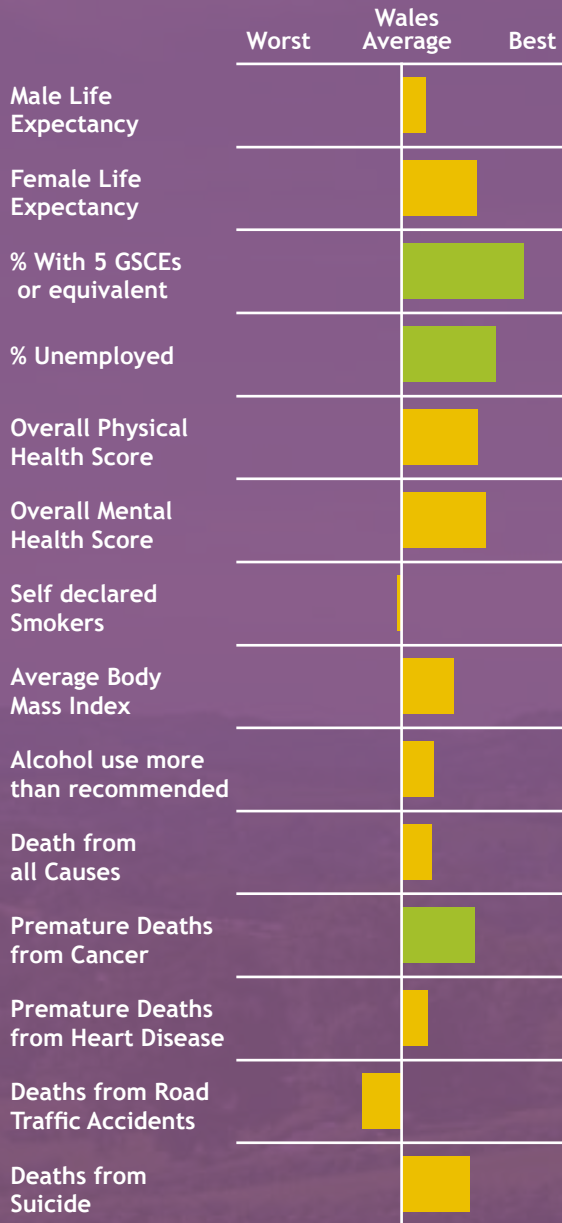
The spine chart shows the relative position of an area between the best and worst results in Wales. **Green bars** show a result that is significantly better than the Wales Average. **Red bars** show a result significantly worse than the Wales average. **Yellow bars** show results within the average range.

For more information please see the Wales Centre for health website www.wch.wales.nhs.uk, or contact 029 2022 7744.





A Picture of Health in Flintshire



Flintshire has a general profile of health that is better than the average for Wales with three indicators significantly better than the Wales average. Flintshire has a majority of its small areas in the least deprived quartile. There is, as with similar communities in North Wales, a growing elderly population that will impact on the future demand for health services.

Positives for health:

- Flintshire has a significantly better rate of people who have 5 GCSEs or equivalent than the Wales average. In addition, the rate of unemployment is significantly less than the average. Death rates from Cancers in people under the age of 75, are also significantly lower than Wales as a whole.

Challenges for the community:

- The rate of deaths from Road Traffic Accidents in Flintshire is greater than the average for Wales.

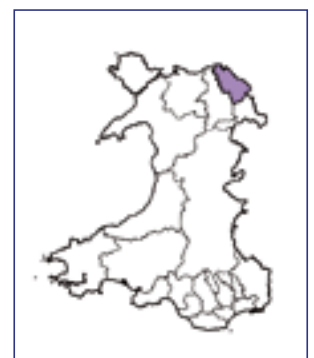
This local picture of health is a first attempt at raising awareness of general health with the public by the Wales Centre for Health. As such we welcome feedback and discussion about how best to engage and inform the public about general health issues.



Notes:

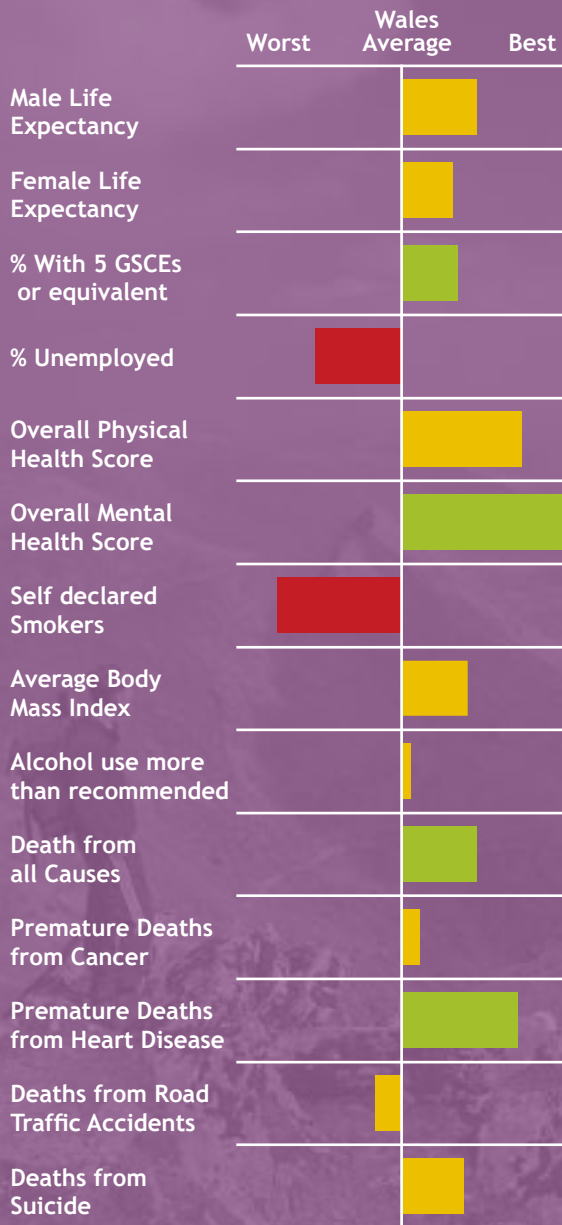
The spine chart shows the relative position of an area between the best and worst results in Wales. **Green bars** show a result that is significantly better than the Wales Average. **Red bars** show a result significantly worse than the Wales average. **Yellow bars** show results within the average range.

For more information please see the Wales Centre for health website www.wch.wales.nhs.uk, or contact 029 2022 7744.





A Picture of Health in Gwynedd



Gwynedd has a profile of health that is generally better than the rest of Wales. There are two indicators at the summary level that show challenges for the community. As a county, Gwynedd has issues with its rural nature which makes access to services difficult. There is, as with other places in Wales, a growing elderly population.

Positives for health:

- People in Gwynedd have the highest score for overall mental health well-being in Wales. In addition, qualifications, deaths from all causes and premature deaths from heart disease are significantly better than the average for Wales.

Challenges for the community:

- The smoking rate, as with the Isle of Anglesey, is one of the highest in Wales. There are also challenges relating to unemployment and deprivation in this community. The influence of rurality and access to services will increasingly be an issue.

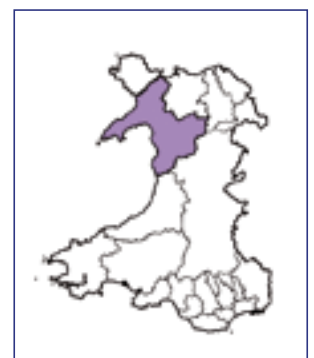
This local picture of health is a first attempt at raising awareness of general health with the public by the Wales Centre for Health. As such we welcome feedback and discussion about how best to engage and inform the public about general health issues.



Notes:

The spine chart shows the relative position of an area between the best and worst results in Wales. **Green bars** show a result that is significantly better than the Wales Average. **Red bars** show a result significantly worse than the Wales average. **Yellow bars** show results within the average range.

For more information please see the Wales Centre for health website www.wch.wales.nhs.uk, or contact 029 2022 7744.





A Picture of Health in the Isle of Anglesey



The Isle of Anglesey has a profile of health that is generally better than the rest of Wales. There are two indicators at the summary level that show challenges for the community. The Isle of Anglesey has issues with its rural nature which makes access to services difficult. There is, as with other places in Wales, a growing elderly population.

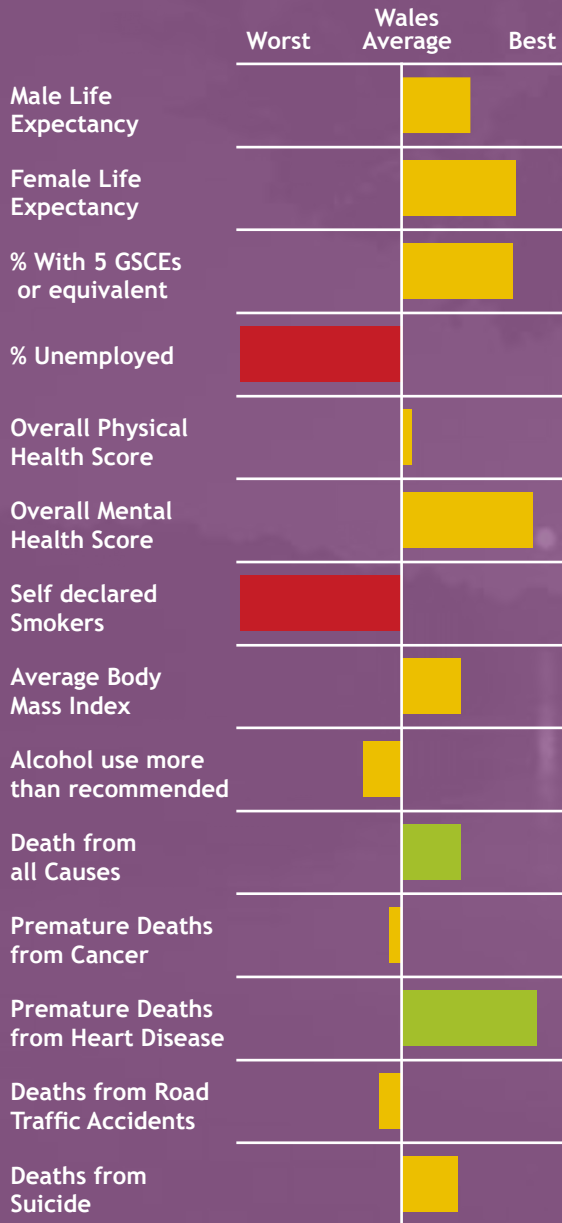
Positives for health:

- People in the Isle of Anglesey show the lowest amount of premature deaths from heart disease in Wales. In addition rates of overall life expectancy, the mental health score, deaths from all causes and educational qualifications are better than the average for Wales.

Challenges for the community:

- The rates for smoking and unemployment are the highest in Wales. With a growing elderly population, many coming from outside of the local area, access to services will increasingly be an issue.

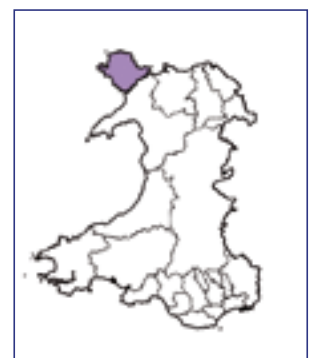
This local picture of health is a first attempt at raising awareness of general health with the public by the Wales Centre for Health. As such we welcome feedback and discussion about how best to engage and inform the public about general health issues.



Notes:

The spine chart shows the relative position of an area between the best and worst results in Wales. **Green bars** show a result that is significantly better than the Wales Average. **Red bars** show a result significantly worse than the Wales average. **Yellow bars** show results within the average range.

For more information please see the Wales Centre for health website www.wch.wales.nhs.uk, or contact 029 2022 7744.





A Picture of Health in Wrexham



Wrexham has a general profile of health largely similar to the average for Wales. The majority of small areas in Wrexham are less deprived than the average for Wales however, there are some pockets of relative deprivation. There is a growing older population that will impact on the demand for health services in the future.

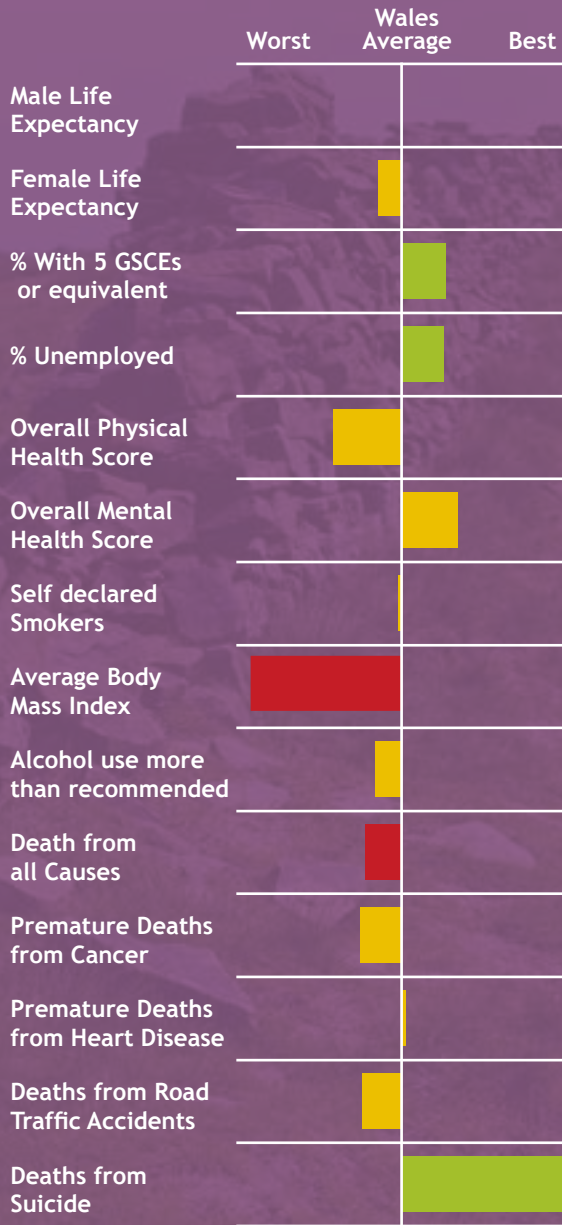
Positives for health:

- Education and Unemployment, key determinants of overall health, are significantly better than the average for Wales. Wrexham also has the lowest rate for Suicide in Wales.

Challenges for the community:

- Wrexham has a overall rate of obesity that is significantly higher than the rate for Wales. This may be contributing to the score for overall physical health, which is lower than the Wales score.
- The gap between the life expectancy rate of Wrexham and the best in Wales for men and women is wider than it was in 1991.

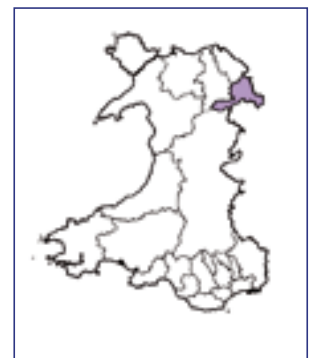
This local picture of health is a first attempt at raising awareness of general health with the public by the Wales Centre for Health. As such we welcome feedback and discussion about how best to engage and inform the public about general health issues.



Notes:

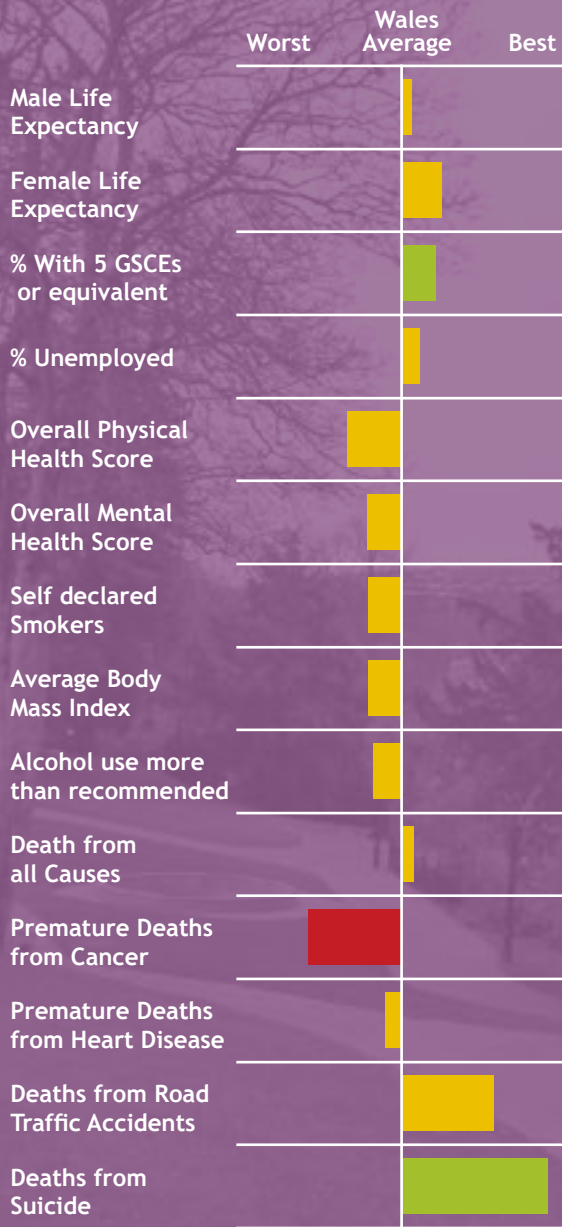
The spine chart shows the relative position of an area between the best and worst results in Wales. **Green bars** show a result that is significantly better than the Wales Average. **Red bars** show a result significantly worse than the Wales average. **Yellow bars** show results within the average range.

For more information please see the Wales Centre for health website www.wch.wales.nhs.uk, or contact 029 2022 7744.





A Picture of Health in Torfaen



Torfaen has a general profile of health largely similar to the average for Wales. The area has a lower age profile than the rest of Wales with a higher proportion of people aged between 5 and 19. Deprivation levels in Torfaen are clustered mainly around the best 25% and the worst 25% in Wales, indicating different challenges within the community.

Positives for health:

- Education, a key determinant of overall health, are significantly better than the average for Wales. Torfaen also has one of the lowest rates for Suicide in Wales.
- Life Expectancy for Men and Women in Torfaen has consistently improved since 1991, closing the gap between this community and the best in Wales.

Challenges for the community:

- Torfaen has an overall rate of premature deaths from Cancer that is significantly higher than the average for Wales. The reasons for this is unclear and may require further investigation.

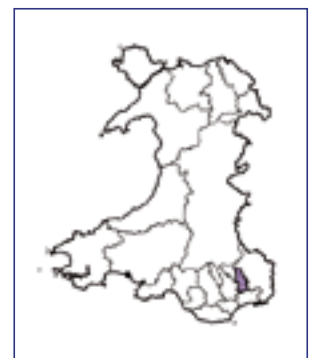
This local picture of health is a first attempt at raising awareness of general health with the public by the Wales Centre for Health. As such we welcome feedback and discussion about how best to engage and inform the public about general health issues.



Notes:

The spine chart shows the relative position of an area between the best and worst results in Wales. **Green bars** show a result that is significantly better than the Wales Average. **Red bars** show a result significantly worse than the Wales average. **Yellow bars** show results within the average range.

For more information please see the Wales Centre for health website www.wch.wales.nhs.uk, or contact 029 2022 7744.





A Picture of Health in The Vale of Glamorgan



The Vale of Glamorgan has a profile of health generally better than the average for Wales. The majority of areas in The Vale of Glamorgan are less deprived than the average for Wales however, there are some pockets of relative deprivation. There is a growing older population that will impact on the demand for health services in the future.

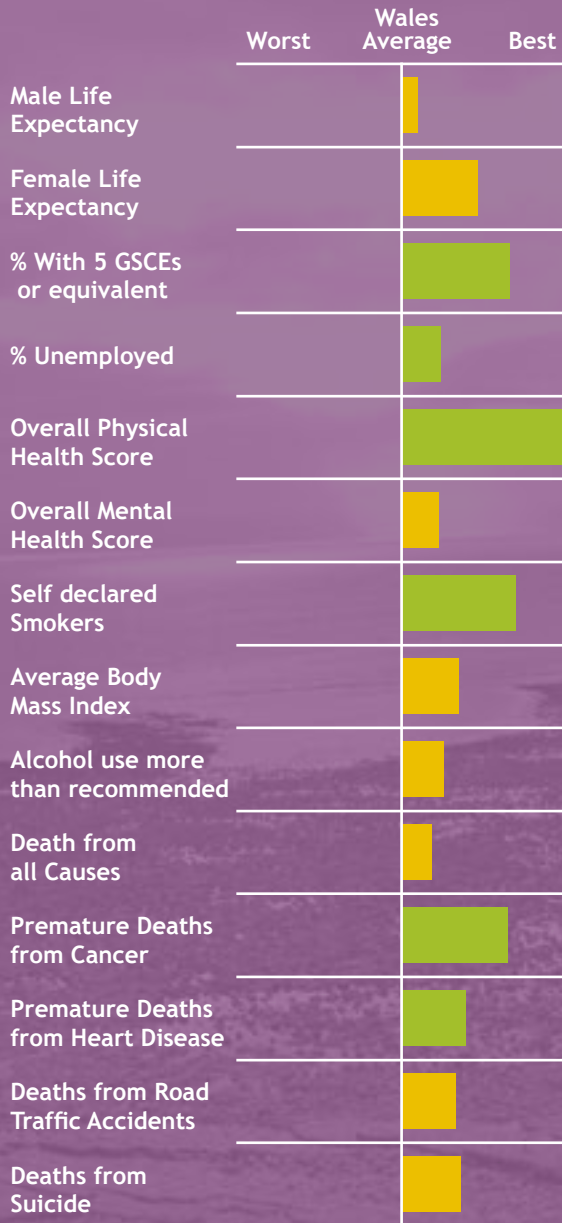
Positives for health:

- Education and Unemployment, key determinants of overall health, are significantly better than the average for Wales.

Challenges for the community:

- The Vale of Glamorgan is generally better than the Welsh average, but death rates and male life expectancy highlight potential issues.

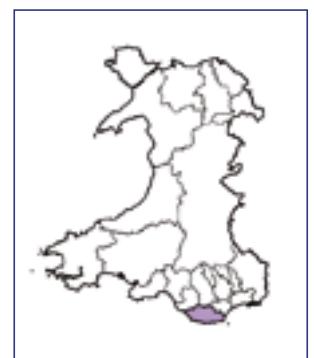
This local picture of health is a first attempt at raising awareness of general health with the public by the Wales Centre for Health. As such we welcome feedback and discussion about how best to engage and inform the public about general health issues.



Notes:

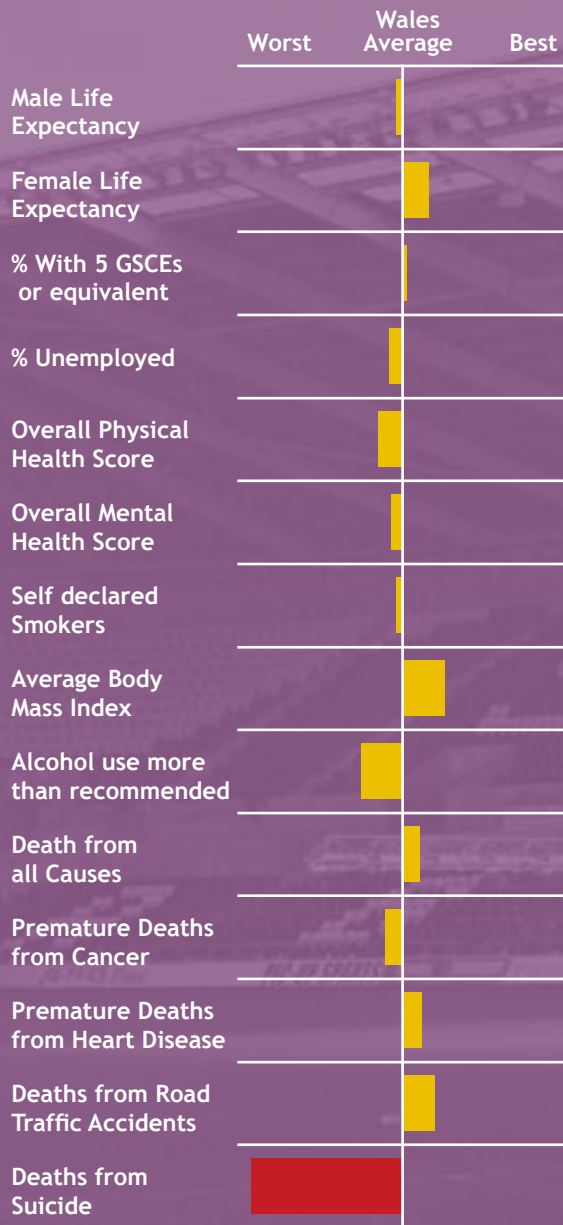
The spine chart shows the relative position of an area between the best and worst results in Wales. **Green bars** show a result that is significantly better than the Wales Average. **Red bars** show a result significantly worse than the Wales average. **Yellow bars** show results within the average range.

For more information please see the Wales Centre for health website www.wch.wales.nhs.uk, or contact 029 2022 7744.





A Picture of Health in Swansea



Swansea has a profile of health largely similar to the average for Wales. The majority of small areas in Swansea are less deprived than the average for Wales however, there are some pockets of relative deprivation.

Positives for health:

- Female life expectancy and obesity are better than the overall Welsh average but these are not significant.

Challenges for the community:

- Swansea has a significantly worse rate for suicide than the Wales average. Generally most indicators are similar to the Wales average.

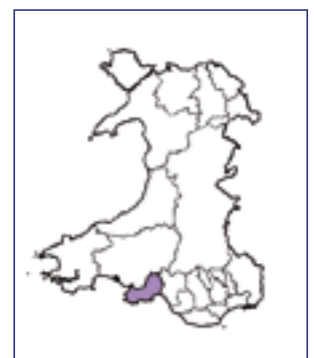
This local picture of health is a first attempt at raising awareness of general health with the public by the Wales Centre for Health. As such we welcome feedback and discussion about how best to engage and inform the public about general health issues.



Notes:

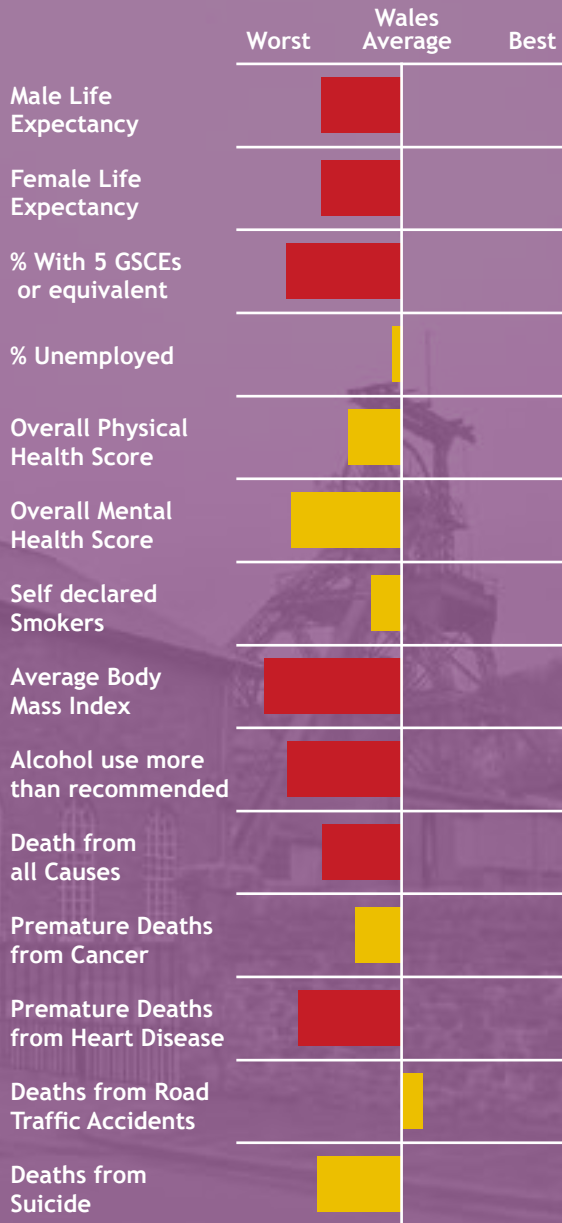
The spine chart shows the relative position of an area between the best and worst results in Wales. **Green bars** show a result that is significantly better than the Wales Average. **Red bars** show a result significantly worse than the Wales average. **Yellow bars** show results within the average range.

For more information please see the Wales Centre for health website www.wch.wales.nhs.uk, or contact 029 2022 7744.





A Picture of Health in Rhondda Cynon Taff



Rhondda Cynon Taff has a health profile that is largely worse than the Welsh average. The majority of small areas in Rhondda Cynon Taff are deprived compared with the average for Wales however, there are some pockets of relative non-deprivation. There is a growing older population that will impact on the demand for health services in the future.

Positives for health:

- There are slightly better rates of Road Traffic Accidents compared with Wales, but this is not significant.

Challenges for the community:

- Rhondda Cynon Taff has a poor life expectancy for males and females, poor educational attainment and worse alcohol consumption and obesity levels compared with the Wales average. It also has a worse rate than Wales for premature death from heart disease.

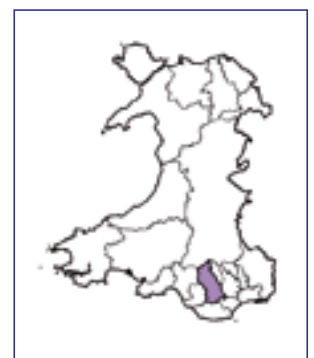
This local picture of health is a first attempt at raising awareness of general health with the public by the Wales Centre for Health. As such we welcome feedback and discussion about how best to engage and inform the public about general health issues.



Notes:

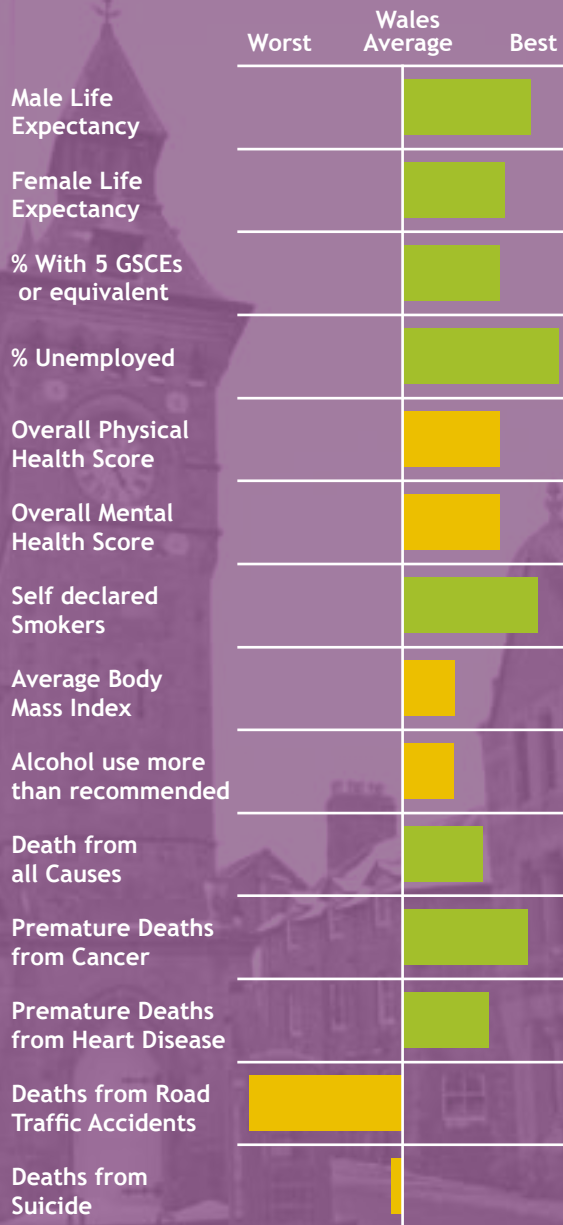
The spine chart shows the relative position of an area between the best and worst results in Wales. **Green bars** show a result that is significantly better than the Wales Average. **Red bars** show a result significantly worse than the Wales average. **Yellow bars** show results within the average range.

For more information please see the Wales Centre for health website www.wch.wales.nhs.uk, or contact 029 2022 7744.





A Picture of Health in Powys



Powys has a profile of health largely better than the average for Wales. The majority of small areas in Powys are less deprived than the average for Wales however, there are some pockets of relative deprivation. There is a growing older population that will influence the demand on health services in the future.

Positives for health:

- Education and Unemployment, key determinants of overall health, are significantly better than the average for Wales. Powys also has better life expectancy and lower premature death rates than the Welsh average for cancer and heart disease.

Challenges for the community:

- Powys has a worse rate for Road Traffic Accidents (but this is not significantly different to Wales), this may be a reflection of the rural nature of the area. There are also slightly worse death rates for suicides than the Wales average.

This local picture of health is a first attempt at raising awareness of general health with the public by the Wales Centre for Health. As such we welcome feedback and discussion about how best to engage and inform the public about general health issues.



Notes:

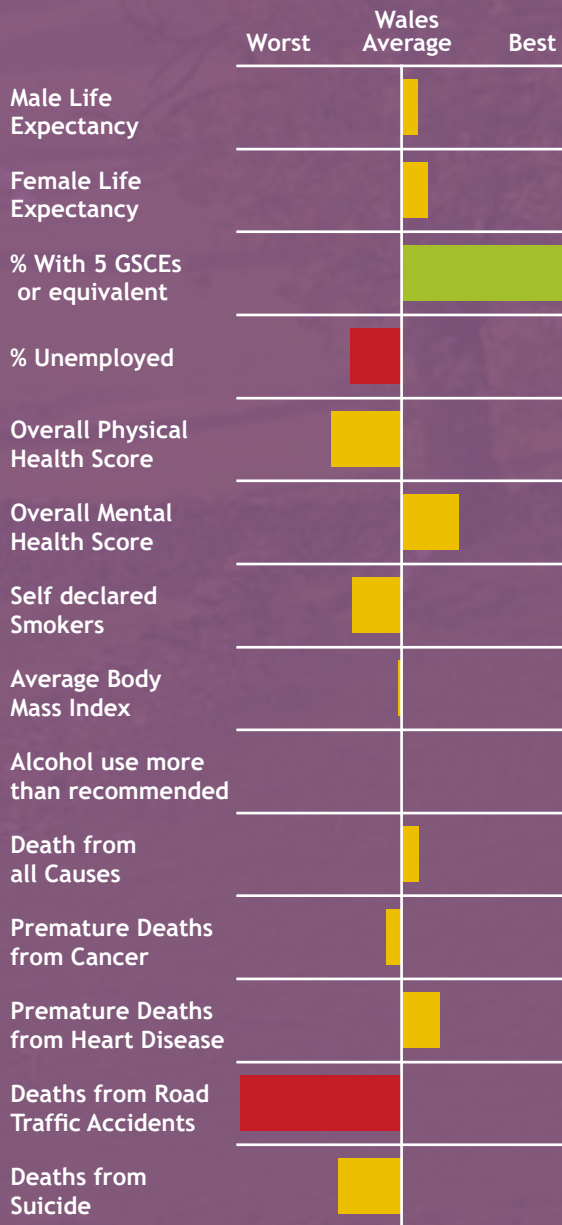
The spine chart shows the relative position of an area between the best and worst results in Wales. **Green bars** show a result that is significantly better than the Wales Average. **Red bars** show a result significantly worse than the Wales average. **Yellow bars** show results within the average range.

For more information please see the Wales Centre for health website www.wch.wales.nhs.uk, or contact 029 2022 7744.





A Picture of Health in Pembrokeshire



Pembrokeshire has a profile of health largely similar to the average for Wales. The majority of small areas in Pembrokeshire are less deprived than the average for Wales however, there are some pockets of relative deprivation. There is a growing older population that will impact on the demand for health services in the future.

Positives for health:

- Education, a key determinant of overall health, is significantly better than the average for Wales.

Challenges for the community:

- Pembrokeshire has an overall rate of unemployment that is significantly higher than the rate for Wales.
- There are also worse rates for Road Traffic Accidents in Pembrokeshire compared with Wales, this may be a reflection of its largely rural nature.

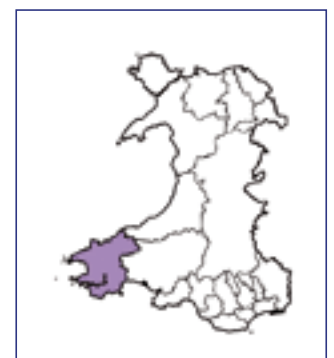
This local picture of health is a first attempt at raising awareness of general health with the public by the Wales Centre for Health. As such we welcome feedback and discussion about how best to engage and inform the public about general health issues.



Notes:

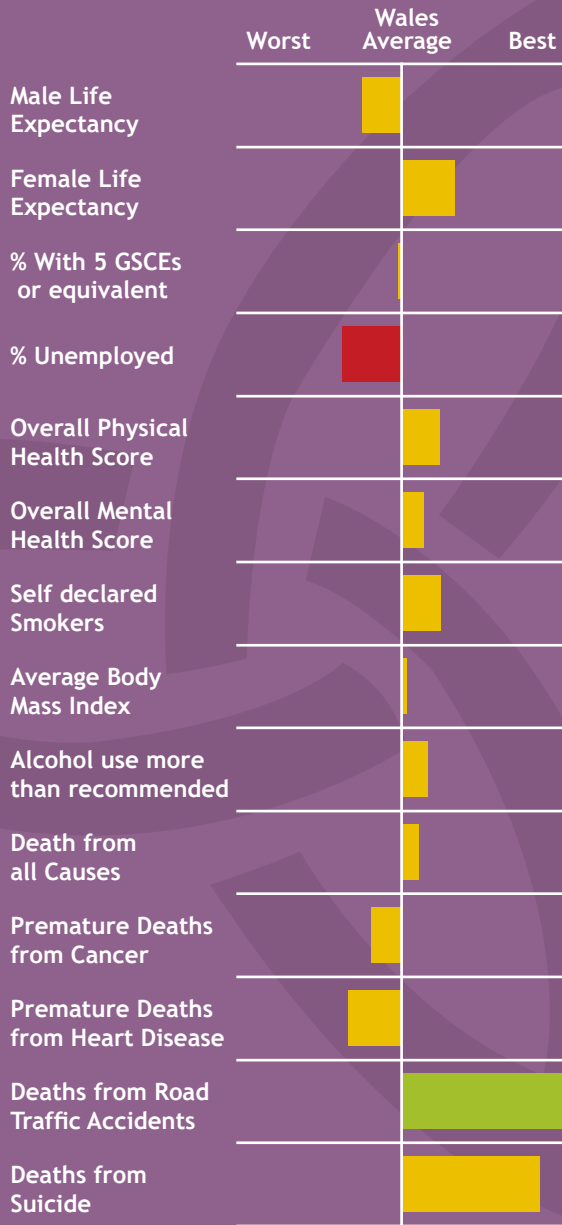
The spine chart shows the relative position of an area between the best and worst results in Wales. **Green bars** show a result that is significantly better than the Wales Average. **Red bars** show a result significantly worse than the Wales average. **Yellow bars** show results within the average range.

For more information please see the Wales Centre for health website www.wch.wales.nhs.uk, or contact 029 2022 7744.





A Picture of Health in Newport



Newport has a profile of health similar to the average for Wales. The majority of small areas in Newport are less deprived than the average for Wales however, there are some pockets of relative deprivation in the more urban areas. There is a growing older population that will have an impact on the demand for health services in the future.

Positives for health:

- Newport has a significantly better rate of Road Traffic Accidents compared with Wales.

Challenges for the community:

- Unemployment, a key determinant of overall health, is significantly worse than the average for Wales.
- The gap between the life expectancy rate of Newport and the best in Wales for men and women is wider than it was in 1991.

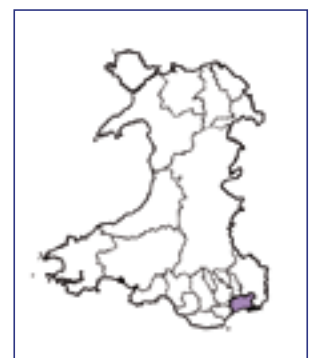
This local picture of health is a first attempt at raising awareness of general health with the public by the Wales Centre for Health. As such we welcome feedback and discussion about how best to engage and inform the public about general health issues.



Notes:

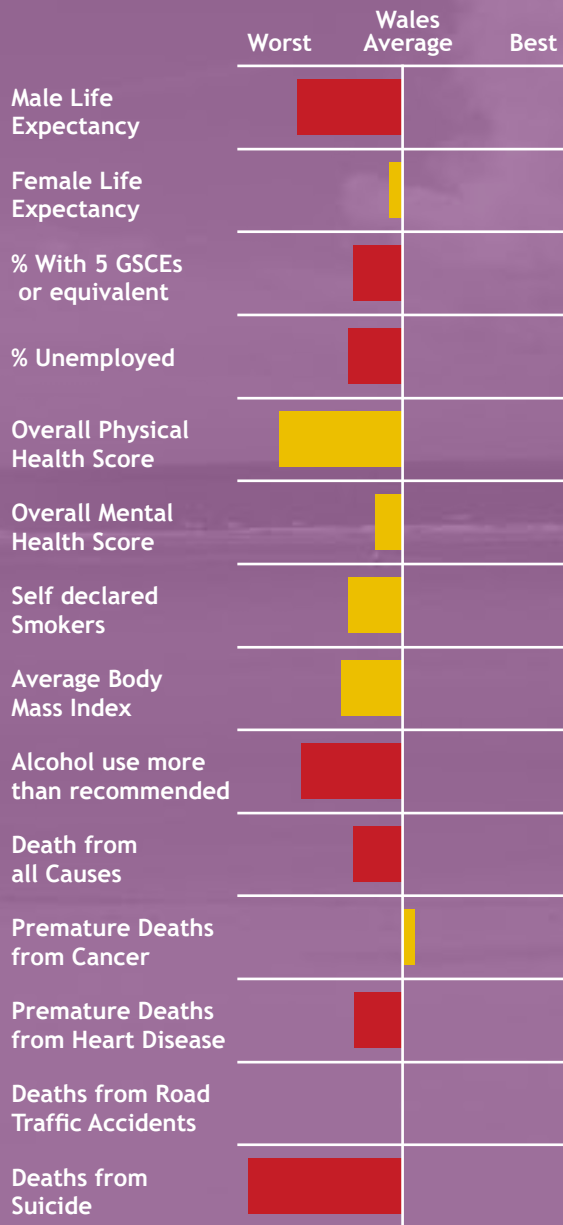
The spine chart shows the relative position of an area between the best and worst results in Wales. **Green bars** show a result that is significantly better than the Wales Average. **Red bars** show a result significantly worse than the Wales average. **Yellow bars** show results within the average range.

For more information please see the Wales Centre for health website www.wch.wales.nhs.uk, or contact 029 2022 7744.





A Picture of Health in Neath Port Talbot



Neath Port Talbot has a profile of health largely worse than the average for Wales. The majority of small areas in Neath Port Talbot are more deprived than the average for Wales however, there are some pockets of relative low-deprivation. There is a growing older population that will have an impact on demand for health services in the future.

Challenges for the community:

- Neath Port Talbot has a worse life expectancy compared with Wales for males. Education and unemployment, key determinants of individual health, are significantly worse than Wales as is alcohol consumption, premature death from heart disease and suicide.

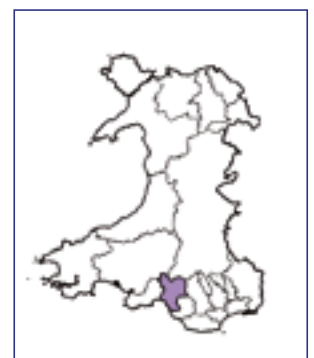
This local picture of health is a first attempt at raising awareness of general health with the public by the Wales Centre for Health. As such we welcome feedback and discussion about how best to engage and inform the public about general health issues.



Notes:

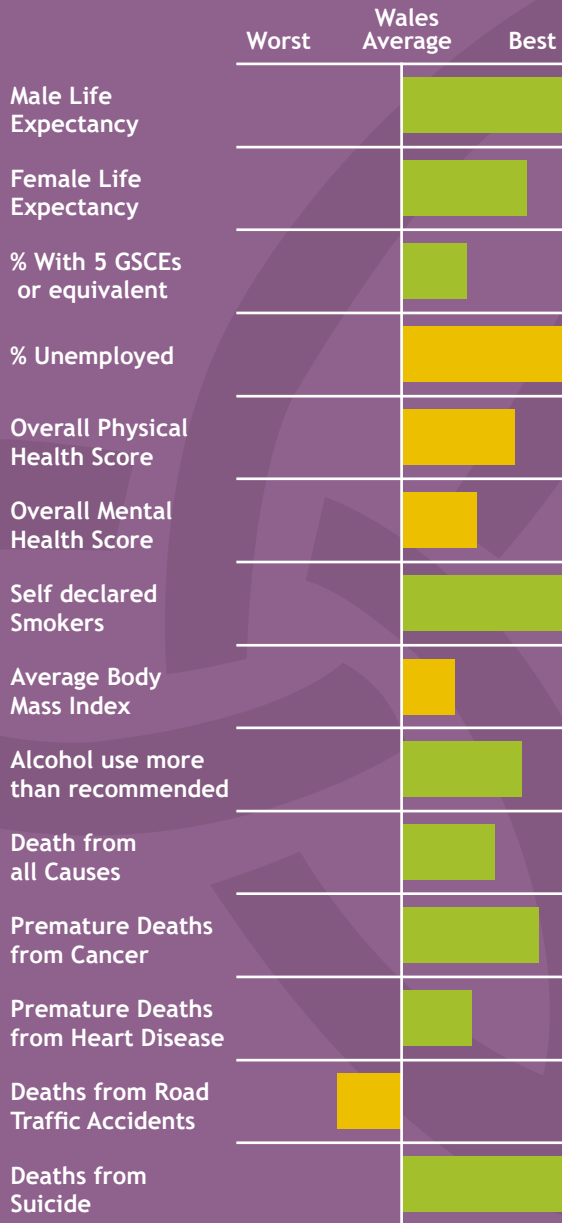
The spine chart shows the relative position of an area between the best and worst results in Wales. **Green bars** show a result that is significantly better than the Wales Average. **Red bars** show a result significantly worse than the Wales average. **Yellow bars** show results within the average range.

For more information please see the Wales Centre for health website www.wch.wales.nhs.uk, or contact 029 2022 7744.





A Picture of Health in Monmouthshire



Monmouthshire has a profile of health largely better than the average for Wales. The majority of small areas in Monmouthshire are less deprived than the average for Wales however, there are some pockets of relative deprivation. There is a growing older population that will have an impact on the demand for health services in the future.

Positives for health:

- Education and Unemployment, key determinants of overall health, are significantly better than the average for Wales. Monmouthshire also has a low rate for suicide, smoking and premature deaths from cancer compared with Wales.
- Life expectancy for males and females is also better for Monmouthshire than the Wales average.

Challenges for the community:

- Monmouthshire has a worse rate than the Wales average for Road Traffic Accidents, this may be because it is a largely rural area and the difference is not significant.

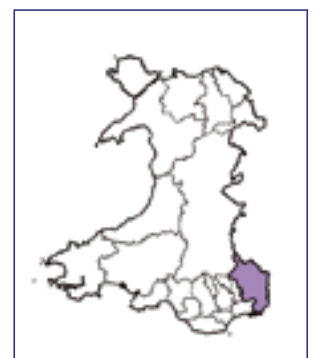
This local picture of health is a first attempt at raising awareness of general health with the public by the Wales Centre for Health. As such we welcome feedback and discussion about how best to engage and inform the public about general health issues.



Notes:

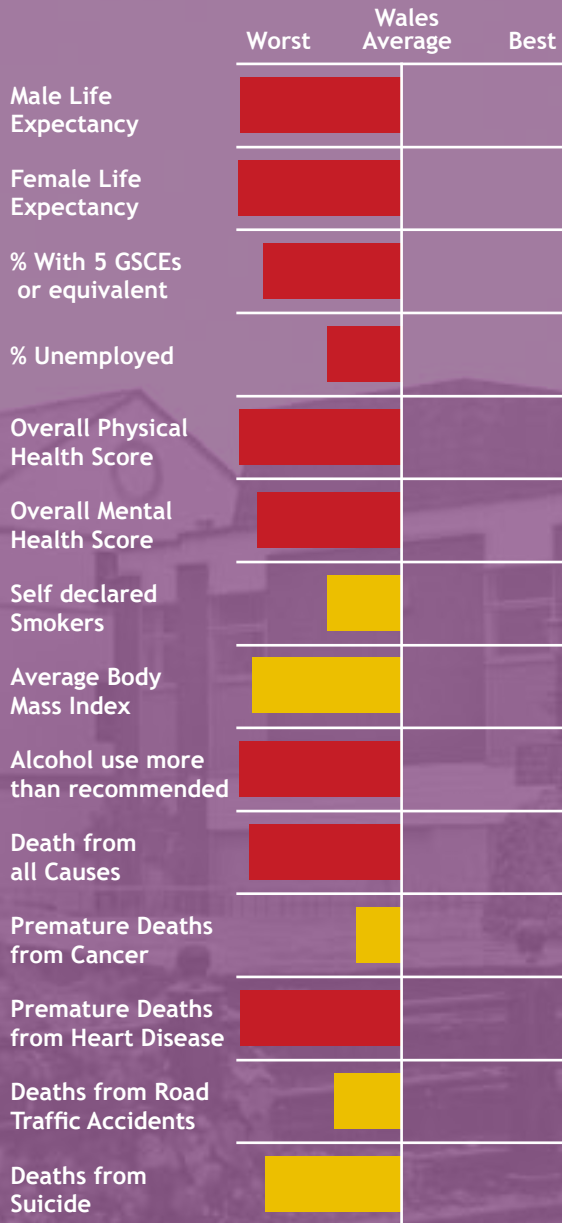
The spine chart shows the relative position of an area between the best and worst results in Wales. **Green bars** show a result that is significantly better than the Wales Average. **Red bars** show a result significantly worse than the Wales average. **Yellow bars** show results within the average range.

For more information please see the Wales Centre for health website www.wch.wales.nhs.uk, or contact 029 2022 7744.





A Picture of Health in Merthyr Tydfil



Merthyr Tydfil has a profile of health largely worse than the average for Wales. The majority of small areas in Merthyr Tydfil are more deprived than the average for Wales.

Challenges for the community:

- Merthyr Tydfil has a lower life expectancy for males and females compared with Wales. Education and unemployment, key determinants of overall health, are significantly worse than the average for Wales.
- Mental and physical health are worse than the Welsh average. Alcohol consumption and premature deaths from heart disease are also worse than the Welsh average.

This local picture of health is a first attempt at raising awareness of general health with the public by the Wales Centre for Health. As such we welcome feedback and discussion about how best to engage and inform the public about general health issues.



Notes:

The spine chart shows the relative position of an area between the best and worst results in Wales. **Green bars** show a result that is significantly better than the Wales Average. **Red bars** show a result significantly worse than the Wales average. **Yellow bars** show results within the average range.

For more information please see the Wales Centre for health website www.wch.wales.nhs.uk, or contact 029 2022 7744.

