

Developing The Public Health Observatory For Wales
Datblygu Arsyllfa Iechyd y Cyhoedd i Gymru

Hywel Dda

Local Health Board

> Demography Profile

Hywel Dda Local Health Board (LHB), covering a quarter of the landmass of Wales¹, is the second most sparsely populated LHB area. 31.4 per cent, 47.9 per cent, and 20.7 per cent of the population live in the local authority areas of Pembrokeshire, Carmarthenshire and Ceredigion respectively.

With 13% of Wales' population the area's **age and sex profile** is similar to that of Wales as a whole (Fig. 1), but there are notable differences with fewer people aged 25-44 and more people aged 55-79. In rural Pembrokeshire and Ceredigion, there are relatively high numbers of older people. Although the 2001 Census reported that one per cent of the population came from a black and ethnic minority background⁴, the effect of migration since this time is more difficult to quantify.

Across Wales and the UK, the **general fertility rate**, the number of births per 1,000 women of child bearing age, had been falling until 2001/2002. However, it has been slowly rising since (Fig. 2). The Hywel Dda LHB area general fertility rate is lower than the Wales rate but closely reflects the Welsh pattern⁵.



Key Statistics	Wales	Hywel Dda LHB
Area size ^[1]	20,779 km ²	5,781 km ²
Total population ^[2]	2,980,000	375,200
Life expectancy at birth - males ^[3]	76.8 years	77.1 years
Life expectancy at birth - females ^[3]	81.2 years	82.0 years
Persons per km ² ^[1, 2]	143.4	64.9
% population from ethnic minority background (2001) ^[4]	2.1%	1.0%
Total number of births ^[5]	34,572	3,894
Number of deaths ^[6]	32,148	4,186
% lower super output areas (LSOAs) in most deprived 5th of Wales ^[7]	20%	10%

> **Fig 1: Population Pyramid Hywel Dda LHB and Wales**
Data source: Office for National Statistics, mid year estimates 2007

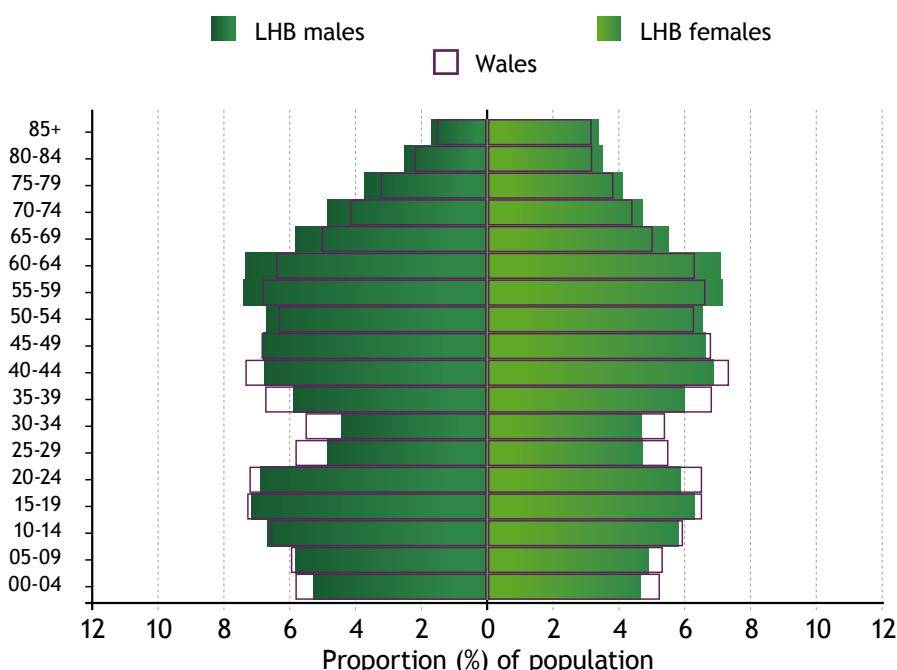
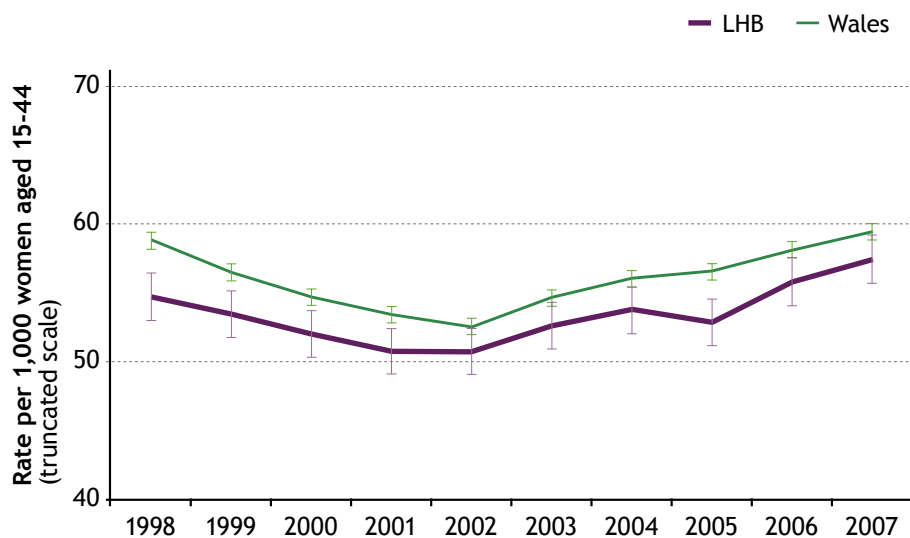


Fig 2: General Fertility Rate trend, Hywel Dda LHB and Wales, 1998 - 2007

Data source: Office for National Statistics, Annual District Births Extract, mid year estimates



Error bars represent 95% confidence intervals. These reflect how random variation might influence the rate shown. This variation is greater in smaller populations, giving rise to wider intervals (for further details see website).

Fig 3: Under 75 mortality rate trend, Hywel Dda LHB and Wales 1998 - 2007

Data source: Office for National Statistics, Annual District Deaths Extract, mid year estimates



*EASR: European age standardised rate. Age standardisation allows comparison of rates across populations or time periods even when the age structures in these populations/time periods are different.

- Office for National Statistics, 2007 geography.
- Office for National Statistics, 2007 mid year estimates (rounded to the nearest 100).
- Office for National Statistics, 2005-07 deaths registration and mid-year population estimates data.
- Office for National Statistics, 2001 Census.

- Office for National Statistics, Annual District Births Extract.
- Office for National Statistics, Annual District Deaths Extract.
- Welsh Assembly Government (Welsh Index of Multiple Deprivation domains: income employment, health, education, access to service, housing, physical environment, community safety).

© 2009 Wales Centre for Health and the National Public Health Service for Wales.

Material contained in this profile may be reproduced without prior permission provided it is done so accurately and is not used in a misleading context.

Acknowledgement to the Wales Centre for Health and the National Public Health Service for Wales to be stated.

Typographical copyright lies with the Wales Centre for Health and the National Public Health Service for Wales

In Hywel Dda LHB area, the under 75 age-standardised mortality rate dropped by 22 per cent between 1998 and 2007 (Fig. 3). It has remained consistently below the Wales rate. This fall is likely to reflect not only the activities of health services, but also improvements in living standards in Hywel Dda during the latter part of the 20th century.

The greatest causes of death in people aged under 75 among Hywel Dda LHB residents are cancer, circulatory disease and respiratory disease, together accounting for 43%, 27% and 9% of approximately 1,400 deaths respectively during 2007⁶.

Geographically based deprivation measures can be used to show inequalities in health and suggest areas likely to most need measures to improve health and manage ill-health. The Welsh Index of Multiple Deprivation 2008 is produced at a small area level called Lower Super Output Area (LSOA), and is derived from a broad range of factors⁷.

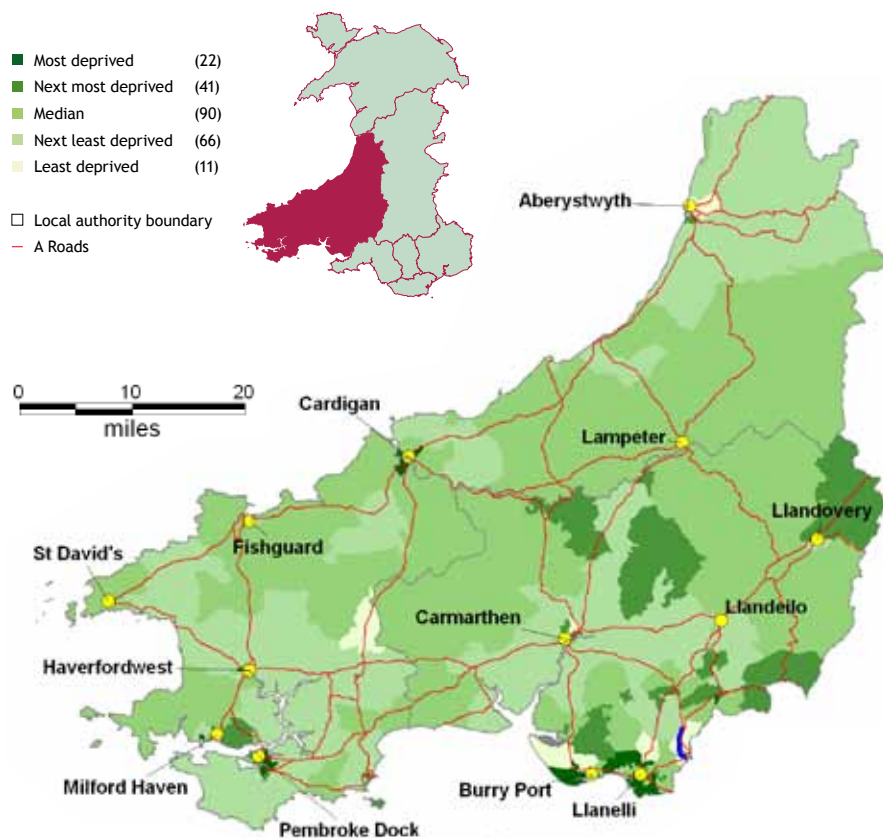
In Hywel Dda LHB there are areas of deprivation including parts of Llanelli, Pembroke Dock and Cardigan (Fig. 4). 22 out of 230 of the LSOAs in the LHB (10 per cent) are among the most deprived fifth in Wales with 11 out of 230 (5 per cent) in the least deprived fifth. However, within less deprived areas there are often pockets of hidden deprivation.

Current projections see a rise in the older population (75 years and over) of Hywel Dda LHB residents from 35,000 (10% of the total population) in 2006 to 70,000

> Fig 4: Overall Welsh Index of Multiple Deprivation 2008

Fifths of deprivation, Lower Super Output Areas.

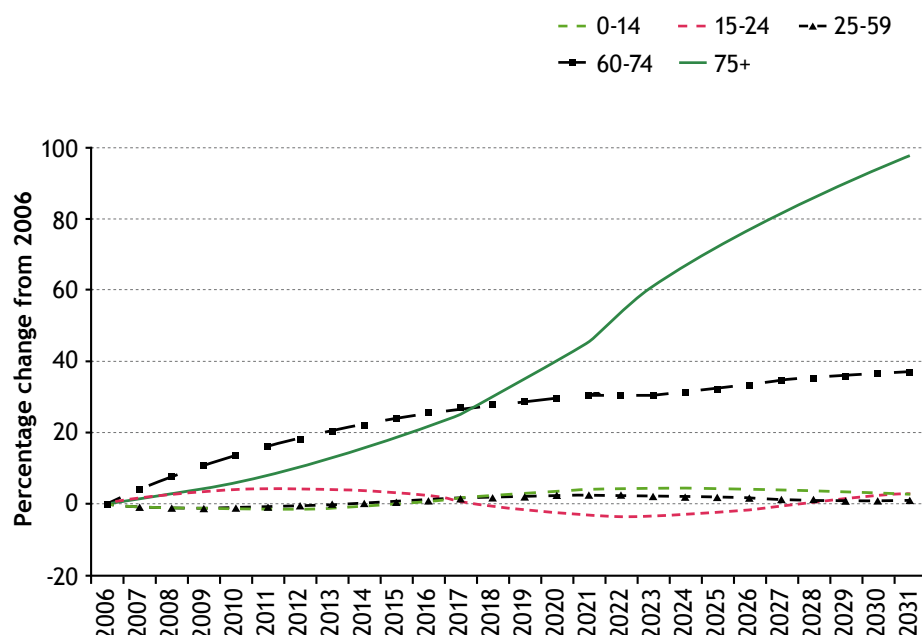
Data source: Welsh Assembly Government



© Crown copyright database right 2009. All rights reserved. OS licence 100044810.

> Fig 5: Population projections, Hywel Dda LHB

Data source: Derived from LA Population Projections (2006-based)
Welsh Assembly Government



(16% of the total population) in 2031 (Fig. 5). These estimates are based on assumptions about births, deaths and migration. The increase in the number of older people is likely to cause a rise in chronic conditions such as circulatory and respiratory diseases and cancers. Meeting the needs of these individuals will be a key challenge for the LHB. In the current economic climate, the relative (and absolute) increase in economically dependent and, in some cases, care-dependent populations will pose particular challenges to communities.

> Further Information:

More detail on the demography of the residents of Hywel Dda LHB and Wales to accompany this profile is available at www.wch.wales.nhs.uk. This includes information at small area level, local variations in mortality and further resources to support LHB work.

This profile presents information for use by the newly formed Local Health Boards of Wales. It has been produced as the first of a series of information products made available by the newly created Public Health Observatory for Wales, a collaboration between the Wales Centre for Health and the National Public Health Service for Wales. LHB requirements will direct future profile development.

Contact us on:
profiles@wch.wales.nhs.uk