



GIG
CYMRU
NHS
WALES

Arsyllfa Iechyd
Cyhoeddus Cymru
Public Health
Wales Observatory

Ward-level teenage conceptions in Powys tHB, 2010-12

Author: Andrew Dring, Rhys Gibbon, Rhys Powell

Date: 11 November 2014

Version: 2a

Publication/ Distribution: Internal

Purpose and Summary of Document:

This document shows information on teenage conceptions amongst females aged under 16 and 18 for the years 2010-12. It also contains ward level (also known as electoral divisions) conception rates grouped into ranges from highest to lowest shown on a map, and a table showing statistical significance compared to Wales. In addition, teenage abortions amongst female aged under 18 for the years 2011-13 are presented at local authority level. These three pieces of information should be combined to interpret the data and potentially identify areas of particular concern.

Notes:

These data need to be interpreted with extreme caution due to small numbers and population sizes, and variation in population between wards (electoral divisions). The ONS have suppressed data where counts were fewer than five in the three-year period available.

Ward rates and numbers of conceptions are subject to strict conditions of supply by ONS and cannot be shared outside of Public Health Wales or reproduced in documents/via the internet. The information in this document has specifically been prepared in a format that can be shared with external partners.

Conceptions in females aged under 18*, wards in Powys tHB, 2010-12

Local Authority	Ward Code	Ward Name	Stat. Significance compared to Wales
Powys	W39000787	Aber-craf	-
Powys	W39000788	Banwy	-
Powys	W39000789	Beguildy	-
Powys	W39000790	Berriew	-
Powys	W39000791	Blaen Hafren	-
Powys	W39000792	Bronllys	-
Powys	W39000793	Builth	-
Powys	W39000794	Bwlch	-
Powys	W39000795	Caersws	-
Powys	W39000796	Churchstoke	-
Powys	W39000797	Crickhowell Llangattock	-
Powys	W39000798	Cwm-twrch	-
Powys	W39000799	Disserth and Trecoed	-
Powys	W39000800	Dolforwyn	-
Powys	W39000801	Felin-fach	-
Powys	W39000802	Forden	-
Powys	W39000803	Glantwymyn Llanbrynmair	-
Powys	W39000804	Glasbury	-
Powys	W39000805	Guilfield	-
Powys	W39000806	Gwernyfed	-
Powys	W39000807	Hay	-
Powys	W39000808	Kerry	-
Powys	W39000809	Knighton	-
Powys	W39000810	Llanafanfawr	-
Powys	W39000811	Llanbadarn Fawr	-
Powys	W39000812	Llandinam	-
Powys	W39000813	Llandrindod East/Llandrindod West	-
Powys	W39000814	Llandrindod North	No sig. Difference
Powys	W39000815	Llandrindod South	-
Powys	W39000816	Llandrinio	-
Powys	W39000817	Llandysilio	-
Powys	W39000818	Llanelwedd	-
Powys	W39000819	Llanfair Caereinion	-
Powys	W39000820	Llanfihangel	-
Powys	W39000821	Llanfyllin	-
Powys	W39000822	Llangors	-

Local Authority	Ward Code	Ward Name	Stat. Significance compared to Wales
Powys	W39000823	Llangunllo	-
Powys	W39000824	Llangynidr	-
Powys	W39000825	Llanidloes	-
Powys	W39000826	Llanrhaeadr-ym-Mochnant/Llansilin	-
Powys	W39000827	Llansantffraid	-
Powys	W39000828	Llanwddyn	-
Powys	W39000829	Llanwrtyd Wells	-
Powys	W39000830	Llanyre	-
Powys	W39000831	Machynlleth	-
Powys	W39000832	Maescar/Llywel	-
Powys	W39000833	Meifod	-
Powys	W39000834	Montgomery	-
Powys	W39000835	Nantmel	-
Powys	W39000836	Newtown Central	No sig. Difference
Powys	W39000837	Newtown East	-
Powys	W39000838	Newtown Llanllwchaiarn North	-
Powys	W39000839	Newtown Llanllwchaiarn West	-
Powys	W39000840	Newtown South	No sig. Difference
Powys	W39000841	Old Radnor	-
Powys	W39000842	Presteigne	-
Powys	W39000843	Rhayader	-
Powys	W39000844	Rhiwcynon	-
Powys	W39000845	St. David Within	-
Powys	W39000846	St. John	-
Powys	W39000847	St. Mary	-
Powys	W39000848	Talgarth	-
Powys	W39000849	Talybont-on-Usk	-
Powys	W39000850	Tawe-Uchaf	-
Powys	W39000851	Trewern	-
Powys	W39000852	Welshpool Castle	-
Powys	W39000853	Welshpool Gungrog	-
Powys	W39000854	Welshpool Llanerchuddol	-
Powys	W39000855	Ynyscedwyn	-
Powys	W39000856	Yscir	-
Powys	W39000857	Ystradgynlais	-

Produced by Public Health Wales Observatory, conception data and MYE (ONS)

* numbers and rates subject to strict disclosure control; statistical significance of rates per 1,000 females (aged 15 - 17)

'-' Suppressed data

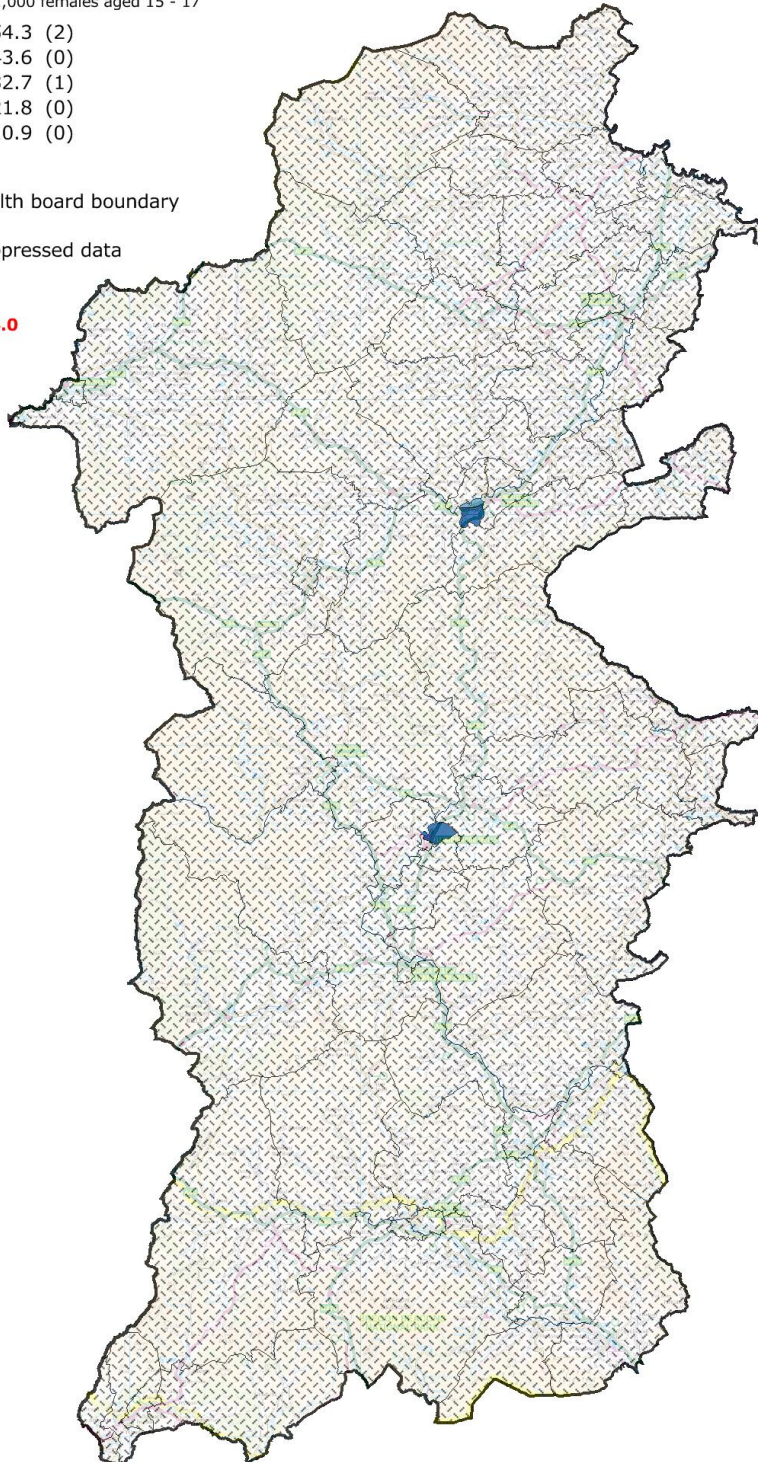
Conceptions in females aged under 18, Powys tHB, 2010 - 12

Wards, rate per 1,000 females aged 15 - 17

- 43.6 to 54.3 (2)
- 32.7 to <43.6 (0)
- 21.8 to <32.7 (1)
- 10.9 to <21.8 (0)
- 0.0 to <10.9 (0)

- ▭ Health board boundary
- ▨ Suppressed data

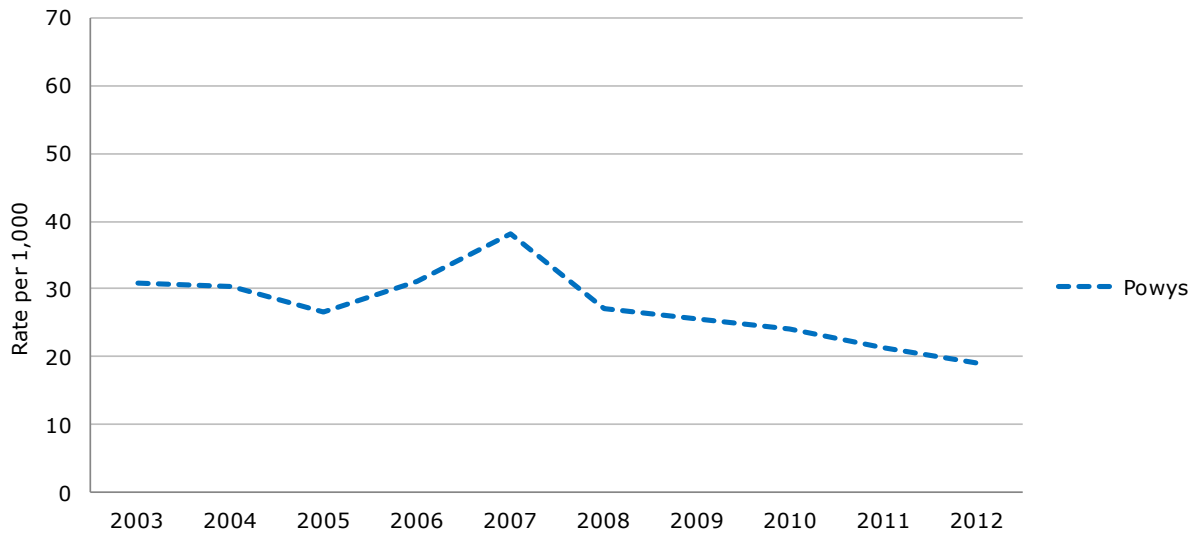
Wales rate: 34.0



Produced by Public Health Wales Observatory, using conceptions data and MYE (ONS)
© Crown Copyright and database right 2014, Ordnance Survey 100044810
Numbers and rates subject to strict disclosure control

Conception rate per 1,000 females aged under 18*, local authorities within Powys tHB, 2003 - 12

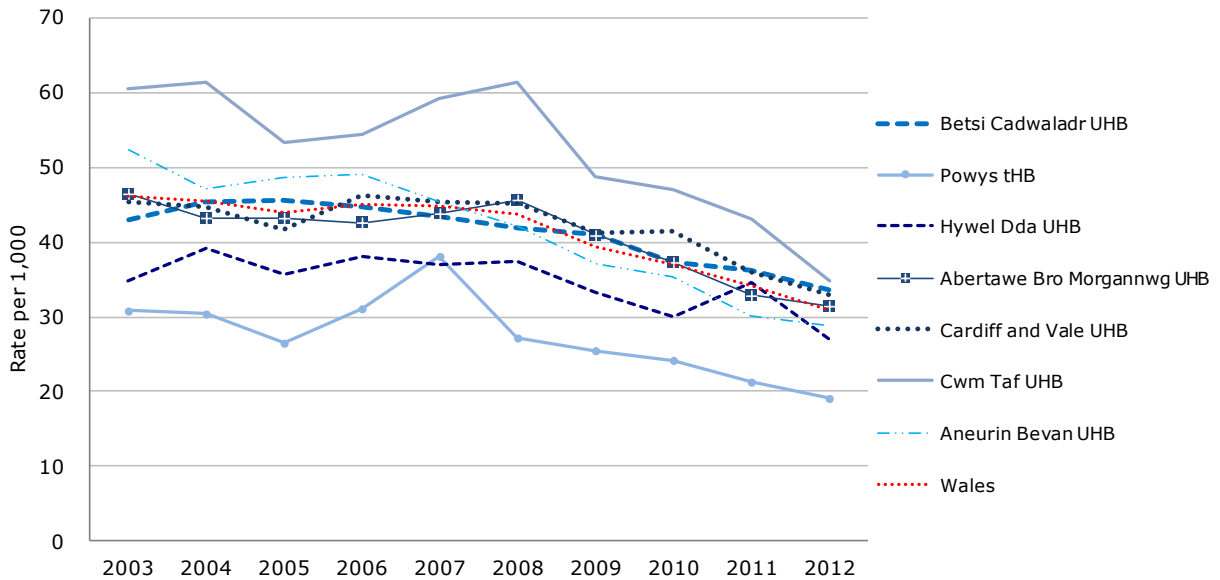
Produced by Public Health Wales Observatory, using conception data and MYE (ONS)



* Rate per 1,000 females aged 15 - 17

Conception rate per 1,000 females aged under 18*, health boards within Wales, 2003 - 12

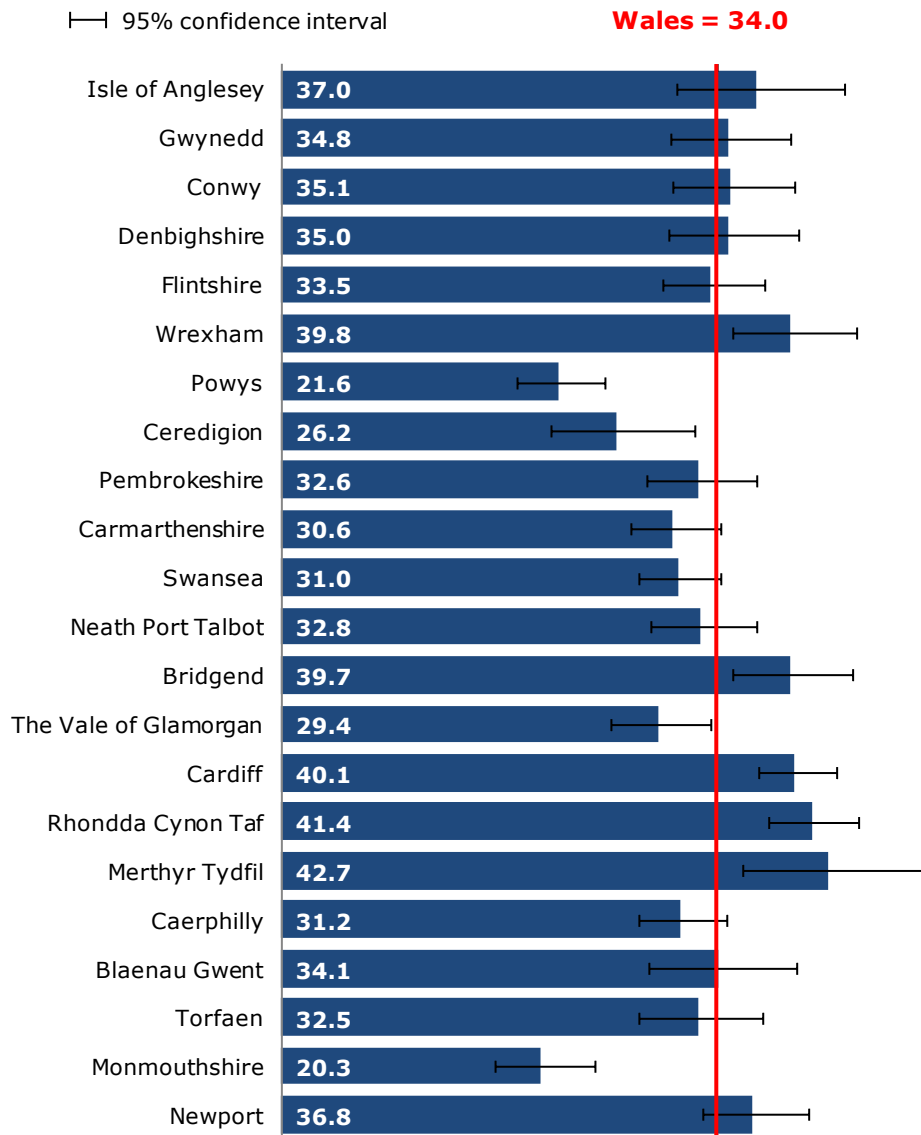
Produced by Public Health Wales Observatory, using conception data and MYE (ONS)



* Rate per 1,000 females aged 15 - 17

Conception rate per 1,000 females aged under 18*, Wales local authorities, 2010- 12

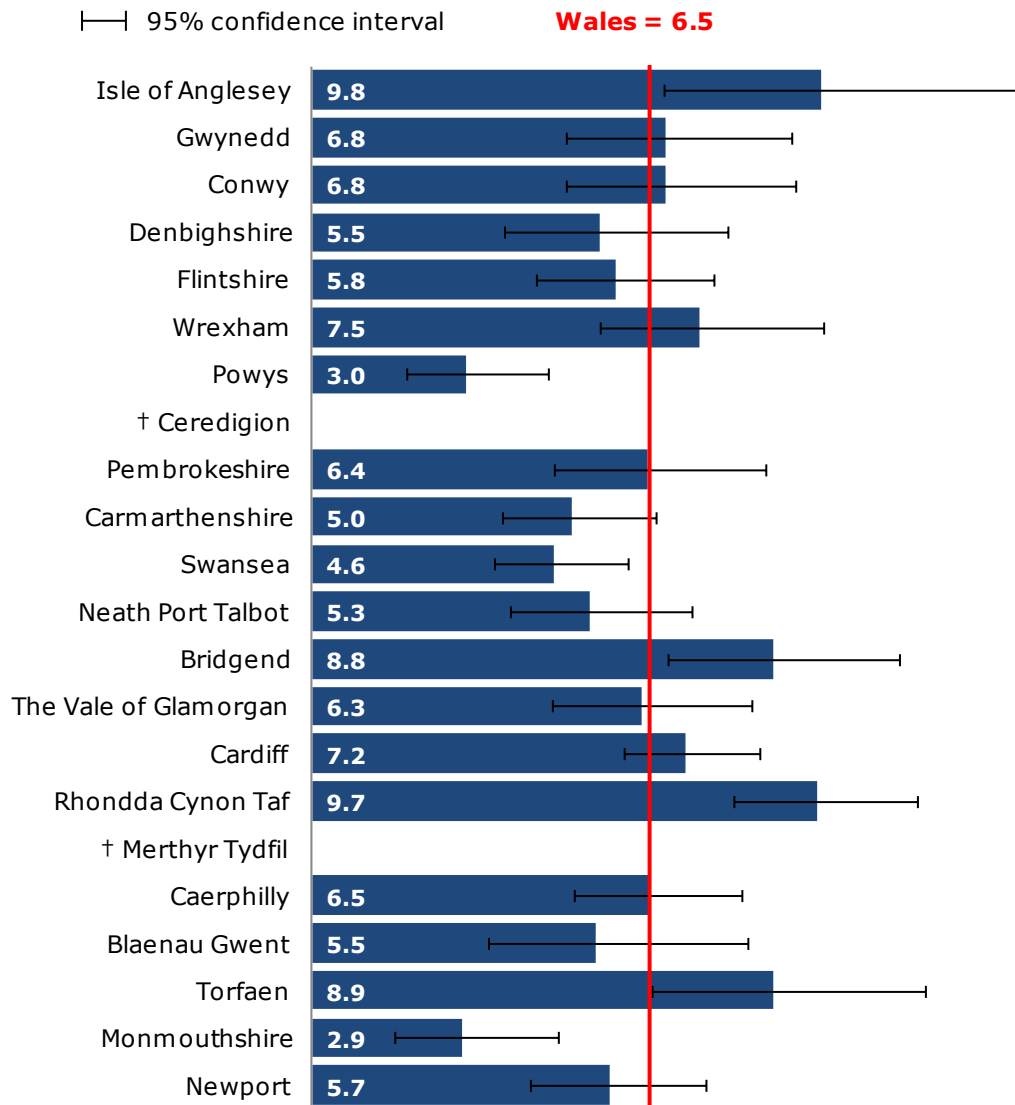
Produced by Public Health Wales Observatory, using conceptions data and MYE (ONS)



* Rate per 1,000 females aged 15 - 17

Conception rate per 1,000, females aged under 16*, Wales local authorities, 2010-12

Produced by Public Health Wales Observatory, using conceptions data and MYE (ONS)

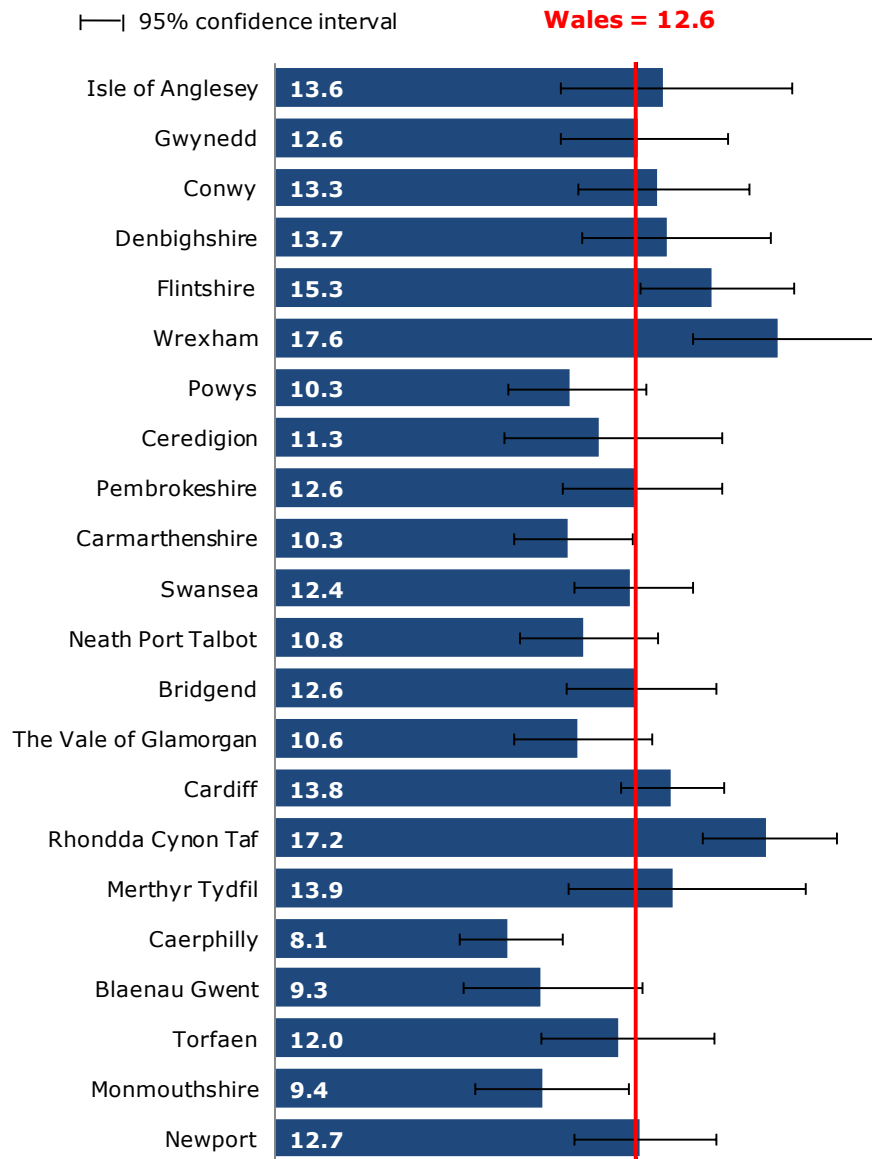


* Rate per 1,000 females aged 13 - 15

† ONS has suppressed data where the number of conceptions was less than five

Abortion rate per 1,000 females aged under 18*, Wales local authorities, 2011-13

Produced by Public Health Wales Observatory, using abortions data and MYE (ONS)



* Rate per 1,000 females aged 15 - 17