



GIG  
CYMRU  
NHS  
WALES

Arsyllfa Iechyd  
Cyhoeddus Cymru  
Public Health  
Wales Observatory

# Ward-level teenage conceptions in Hywel Dda UHB, 2010-12

**Author:** Andrew Dring, Rhys Gibbon, Rhys Powell

**Date:** 11 December 2014

**Version:** 2a

**Publication/ Distribution:** Internal

## **Purpose and Summary of Document:**

This document shows information on teenage conceptions amongst females aged under 16 and 18 for the years 2010-12. It also contains ward level (also known as electoral divisions) conception rates grouped into ranges from highest to lowest shown on a map, and a table showing statistical significance compared to Wales. In addition, teenage abortions amongst female aged under 18 for the years 2011-13 are presented at local authority level. These three pieces of information should be combined to interpret the data and potentially identify areas of particular concern.

## **Notes:**

These data need to be interpreted with extreme caution due to small numbers and population sizes, and variation in population between wards (electoral divisions). The ONS have suppressed data where counts were fewer than five in the three-year period available.

Ward rates and numbers of conceptions are subject to strict conditions of supply by ONS and cannot be shared outside of Public Health Wales or reproduced in documents/via the internet. The information in this document has specifically been prepared in a format that can be shared with external partners.

**Conceptions in females aged under 18\*, wards in Hywel Dda UHB, 2010-12**

<b>Local Authority</b>	<b>Ward Code</b>	<b>Ward Name</b>	<b>Stat. Significance compared to Wales</b>
Ceredigion	W39000275	Aberaeron	-
Ceredigion	W39000276	Aberporth	-
Ceredigion	W39000277	Aberteifi/Cardigan-Mwldan	-
Ceredigion	W39000278	Aberteifi/Cardigan-Rhyd-y-Fuwch	-
Ceredigion	W39000279	Aberteifi/Cardigan-Teifi	-
Ceredigion	W39000280	Aberystwyth Bronglais	-
Ceredigion	W39000281	Aberystwyth Canol/Central	-
Ceredigion	W39000282	Aberystwyth Gogledd/North	-
Ceredigion	W39000283	Aberystwyth Penparcau	No sig. Difference
Ceredigion	W39000284	Aberystwyth Rheidol	-
Ceredigion	W39000285	Beulah	-
Ceredigion	W39000286	Borth	No sig. Difference
Ceredigion	W39000287	Capel Dewi	-
Ceredigion	W39000288	Ceulanamaesmawr	-
Ceredigion	W39000289	Ciliau Aeron	-
Ceredigion	W39000290	Faenor	-
Ceredigion	W39000291	Lampeter	No sig. Difference
Ceredigion	W39000292	Llanarth	-
Ceredigion	W39000293	Llanbadarn Fawr-Padarn	-
Ceredigion	W39000294	Llanbadarn Fawr-Sulien	-
Ceredigion	W39000295	Llandyfriog	-
Ceredigion	W39000296	Llandysilio-gogo	-
Ceredigion	W39000297	Llandysul Town	-
Ceredigion	W39000298	Llanfarian	-
Ceredigion	W39000299	Llanfihangel Ystrad	-
Ceredigion	W39000300	Llangeitho	-
Ceredigion	W39000301	Llangybi	-
Ceredigion	W39000302	Llanrhystyd	-
Ceredigion	W39000303	Llansantffraed	-
Ceredigion	W39000304	Llanwenog	-
Ceredigion	W39000305	Lledrod	-
Ceredigion	W39000306	Melindwr	-
Ceredigion	W39000307	New Quay	-
Ceredigion	W39000308	Penbryn	-
Ceredigion	W39000309	Pen-parc	-
Ceredigion	W39000310	Tirymynach	-
Ceredigion	W39000311	Trefeurig	-
Ceredigion	W39000312	Tregaron	-
Ceredigion	W39000313	Troedyraur	-

<b>Local Authority</b>	<b>Ward Code</b>	<b>Ward Name</b>	<b>Stat. Significance compared to Wales</b>
Ceredigion	W39000314	Ystwyth	-
Pembrokeshire	W39000315	Amroth	-
Pembrokeshire	W39000316	Burton	-
Pembrokeshire	W39000317	Camrose	-
Pembrokeshire	W39000318	Carew	-
Pembrokeshire	W39000319	Cilgerran	-
Pembrokeshire	W39000320	Clydau	-
Pembrokeshire	W39000321	Crymych	-
Pembrokeshire	W39000322	Dinas Cross	-
Pembrokeshire	W39000323	East Williamston	-
Pembrokeshire	W39000324	Fishguard North East	-
Pembrokeshire	W39000325	Fishguard North West	-
Pembrokeshire	W39000326	Goodwick	-
Pembrokeshire	W39000327	Haverfordwest: Castle	No sig. Difference
Pembrokeshire	W39000328	Haverfordwest: Garth	Sig. High
Pembrokeshire	W39000329	Haverfordwest: Portfield	-
Pembrokeshire	W39000330	Haverfordwest: Prendergast Rudbaxton	-
Pembrokeshire	W39000331	Haverfordwest: Priory	-
Pembrokeshire	W39000332	Hundleton	-
Pembrokeshire	W39000333	Johnston	-
Pembrokeshire	W39000334	Kilgetty/Begelly	No sig. Difference
Pembrokeshire	W39000335	Lampeter Velfrey	-
Pembrokeshire	W39000336	Lamphey	-
Pembrokeshire	W39000337	Letterston	-
Pembrokeshire	W39000338	Llangwm	-
Pembrokeshire	W39000339	Llanrhian	-
Pembrokeshire	W39000340	Maenclochog	-
Pembrokeshire	W39000341	Manorbier	-
Pembrokeshire	W39000342	Martletwy	-
Pembrokeshire	W39000343	Merlin's Bridge	No sig. Difference
Pembrokeshire	W39000344	Milford: Central	-
Pembrokeshire	W39000345	Milford: East	No sig. Difference
Pembrokeshire	W39000346	Milford: Hakin	No sig. Difference
Pembrokeshire	W39000347	Milford: Hubberston	No sig. Difference
Pembrokeshire	W39000348	Milford: North	-
Pembrokeshire	W39000349	Milford: West	No sig. Difference
Pembrokeshire	W39000350	Narberth	-
Pembrokeshire	W39000351	Narberth Rural	-
Pembrokeshire	W39000352	Newport	-
Pembrokeshire	W39000353	Neyland: East	-

<b>Local Authority</b>	<b>Ward Code</b>	<b>Ward Name</b>	<b>Stat. Significance compared to Wales</b>
Pembrokeshire	W39000354	Neyland: West	No sig. Difference
Pembrokeshire	W39000355	Pembroke Dock: Central	-
Pembrokeshire	W39000356	Pembroke Dock: Llanion	No sig. Difference
Pembrokeshire	W39000357	Pembroke Dock: Market	No sig. Difference
Pembrokeshire	W39000358	Pembroke Dock: Pennar	No sig. Difference
Pembrokeshire	W39000359	Pembroke: Monkton	Sig. High
Pembrokeshire	W39000360	Pembroke: St. Mary North	-
Pembrokeshire	W39000361	Pembroke: St. Mary South	-
Pembrokeshire	W39000362	Pembroke: St. Michael	-
Pembrokeshire	W39000363	Penally	-
Pembrokeshire	W39000364	Saundersfoot	No sig. Difference
Pembrokeshire	W39000365	Scleddau	-
Pembrokeshire	W39000366	Solva	-
Pembrokeshire	W39000367	St. David's	-
Pembrokeshire	W39000368	St. Dogmaels	-
Pembrokeshire	W39000369	St. Ishmael's	-
Pembrokeshire	W39000370	Tenby: North	-
Pembrokeshire	W39000371	Tenby: South	-
Pembrokeshire	W39000372	The Havens	-
Pembrokeshire	W39000373	Wiston	-
Carmarthenshire	W39000374	Abergwili	-
Carmarthenshire	W39000375	Ammanford	No sig. Difference
Carmarthenshire	W39000376	Betws	-
Carmarthenshire	W39000377	Bigyn	Sig. High
Carmarthenshire	W39000378	Burry Port	No sig. Difference
Carmarthenshire	W39000379	Bynea	No sig. Difference
Carmarthenshire	W39000380	Carmarthen Town North	Sig. High
Carmarthenshire	W39000381	Carmarthen Town South	No sig. Difference
Carmarthenshire	W39000382	Carmarthen Town West	No sig. Difference
Carmarthenshire	W39000383	Cenarth	-
Carmarthenshire	W39000384	Cilycwm	-
Carmarthenshire	W39000385	Cynwyl Elfed	-
Carmarthenshire	W39000386	Cynwyl Gaeo	-
Carmarthenshire	W39000387	Dafen	-
Carmarthenshire	W39000388	Elli	No sig. Difference
Carmarthenshire	W39000389	Felinfoel	Sig. High
Carmarthenshire	W39000390	Garnant	-
Carmarthenshire	W39000391	Glanamman	No sig. Difference
Carmarthenshire	W39000392	Glanymor	Sig. High
Carmarthenshire	W39000393	Glyn	-

Local Authority	Ward Code	Ward Name	Stat. Significance compared to Wales
Carmarthenshire	W39000394	Gorslas	No sig. Difference
Carmarthenshire	W39000395	Hendy	-
Carmarthenshire	W39000396	Hengoed	No sig. Difference
Carmarthenshire	W39000397	Kidwelly	No sig. Difference
Carmarthenshire	W39000398	Laugharne Township	-
Carmarthenshire	W39000399	Llanboidy	-
Carmarthenshire	W39000400	Llanddarog	-
Carmarthenshire	W39000401	Llandeilo	-
Carmarthenshire	W39000402	Llandovery	-
Carmarthenshire	W39000403	Llandybie	-
Carmarthenshire	W39000404	Llanegwad	-
Carmarthenshire	W39000405	Llanfihangel Aberbythych	-
Carmarthenshire	W39000406	Llanfihangel-ar-Arth	-
Carmarthenshire	W39000407	Llangadog	-
Carmarthenshire	W39000408	Llangeler	-
Carmarthenshire	W39000409	Llangennech	No sig. Difference
Carmarthenshire	W39000410	Llangunnor	-
Carmarthenshire	W39000411	Llangyndeyrn	-
Carmarthenshire	W39000412	Llannon	No sig. Difference
Carmarthenshire	W39000413	Llansteffan	-
Carmarthenshire	W39000414	Llanybydder	-
Carmarthenshire	W39000415	Lliedi	No sig. Difference
Carmarthenshire	W39000416	Llwynhendy	No sig. Difference
Carmarthenshire	W39000417	Manordeilo and Salem	No sig. Difference
Carmarthenshire	W39000418	Pembrey	No sig. Difference
Carmarthenshire	W39000419	Penygroes	-
Carmarthenshire	W39000420	Pontamman	-
Carmarthenshire	W39000421	Pontyberem	-
Carmarthenshire	W39000422	Quarter Bach	-
Carmarthenshire	W39000423	Saron	No sig. Difference
Carmarthenshire	W39000424	St. Clears	No sig. Difference
Carmarthenshire	W39000425	St. Ishmael	-
Carmarthenshire	W39000426	Swiss Valley	No sig. Difference
Carmarthenshire	W39000427	Trelech	-
Carmarthenshire	W39000428	Trimsaran	No sig. Difference
Carmarthenshire	W39000429	Tycroes	-
Carmarthenshire	W39000430	Tyisha	No sig. Difference
Carmarthenshire	W39000431	Whitland	No sig. Difference

Produced by Public Health Wales Observatory, conception data and MYE (ONS)

\* numbers and rates subject to strict disclosure control; statistical significance of rates per 1,000 females (aged 15 - 17)

'-' Suppressed data

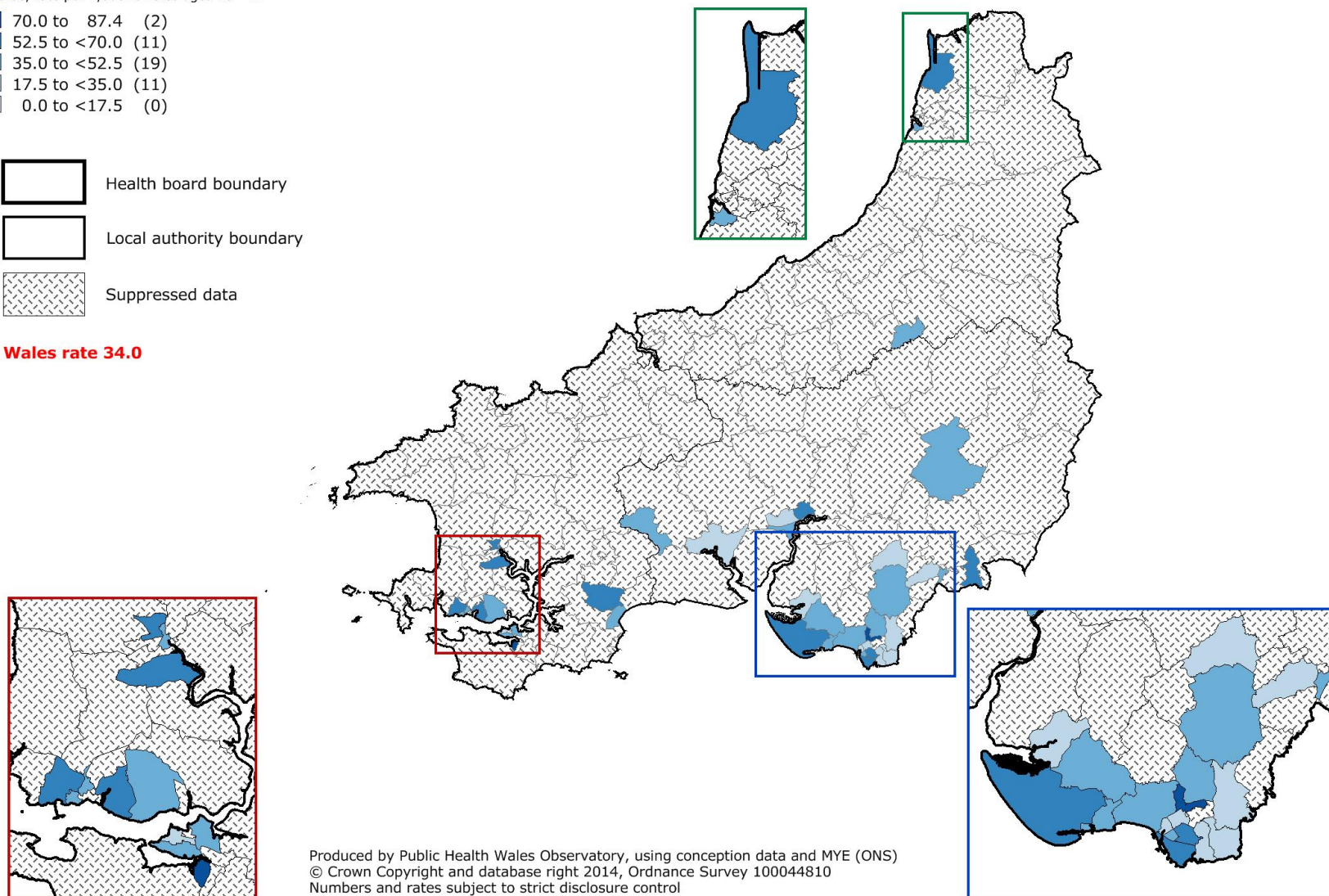
**Conceptions in females aged under 18, Hywel Dda UHB, 2010 - 12**

Wards, rate per 1,000 females aged 15 - 17

- 70.0 to 87.4 (2)
- 52.5 to <70.0 (11)
- 35.0 to <52.5 (19)
- 17.5 to <35.0 (11)
- 0.0 to <17.5 (0)

- ▭ Health board boundary
- ▭ Local authority boundary
- ▨ Suppressed data

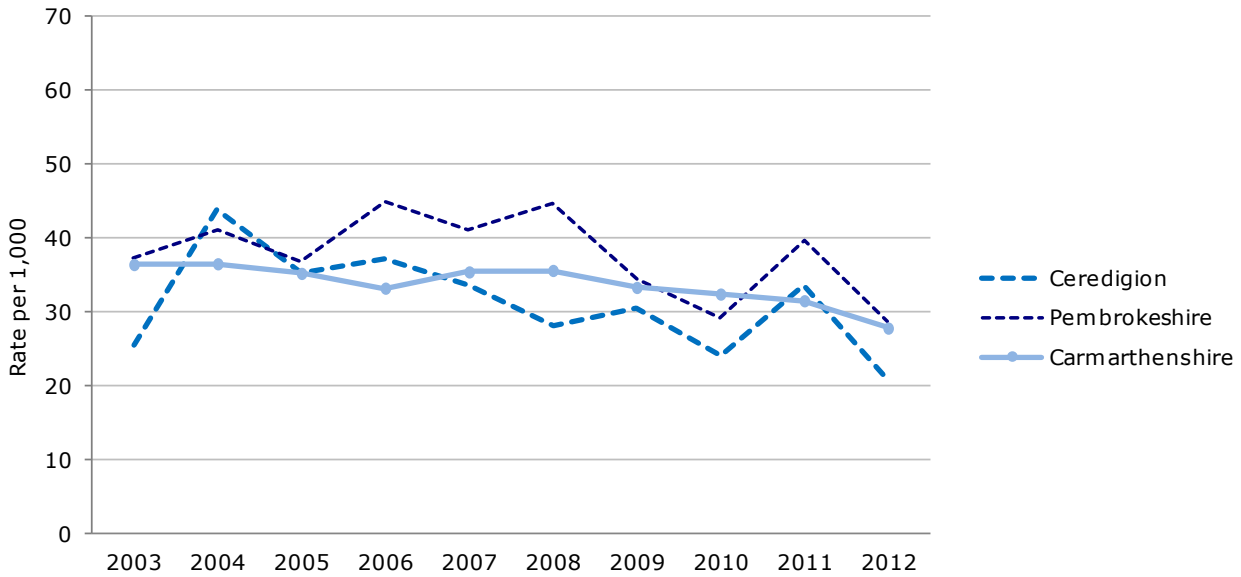
**Wales rate 34.0**



Produced by Public Health Wales Observatory, using conception data and MYE (ONS)  
 © Crown Copyright and database right 2014, Ordnance Survey 100044810  
 Numbers and rates subject to strict disclosure control

**Conception rate per 1,000 females aged under 18\*, local authorities within Hywel Dda UHB, 2003 - 12**

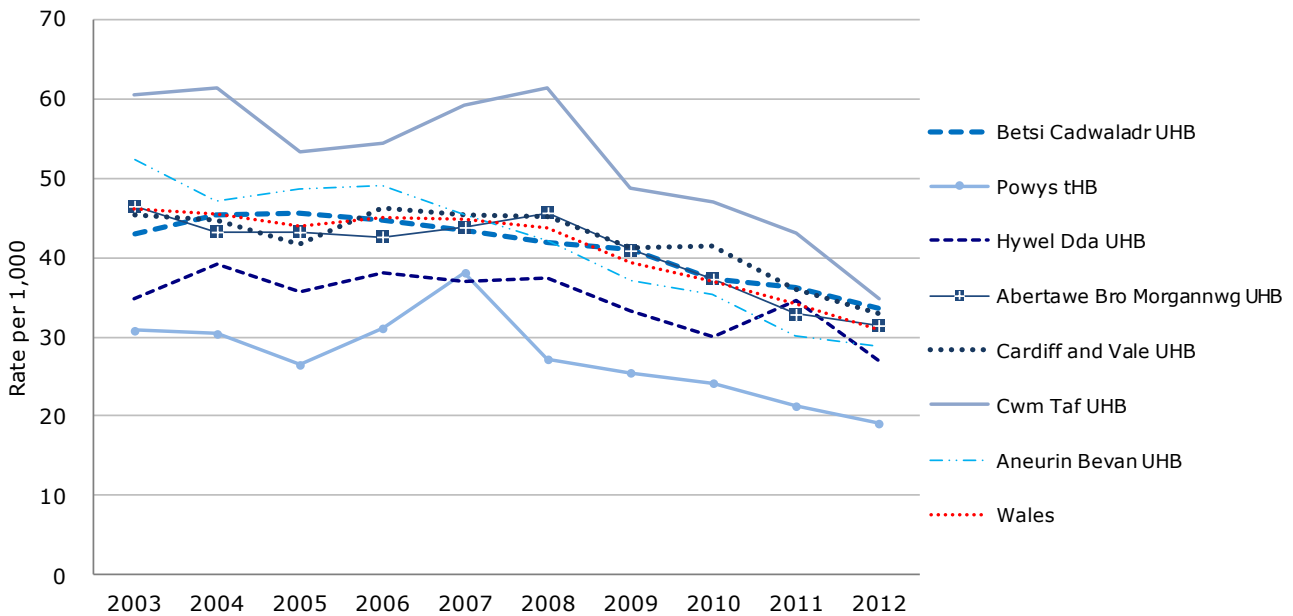
Produced by Public Health Wales Observatory, using conception data and MYE (ONS)



\* Rate per 1,000 females aged 15 - 17

**Conception rate per 1,000 females aged under 18\*, health boards within Wales, 2003 - 12**

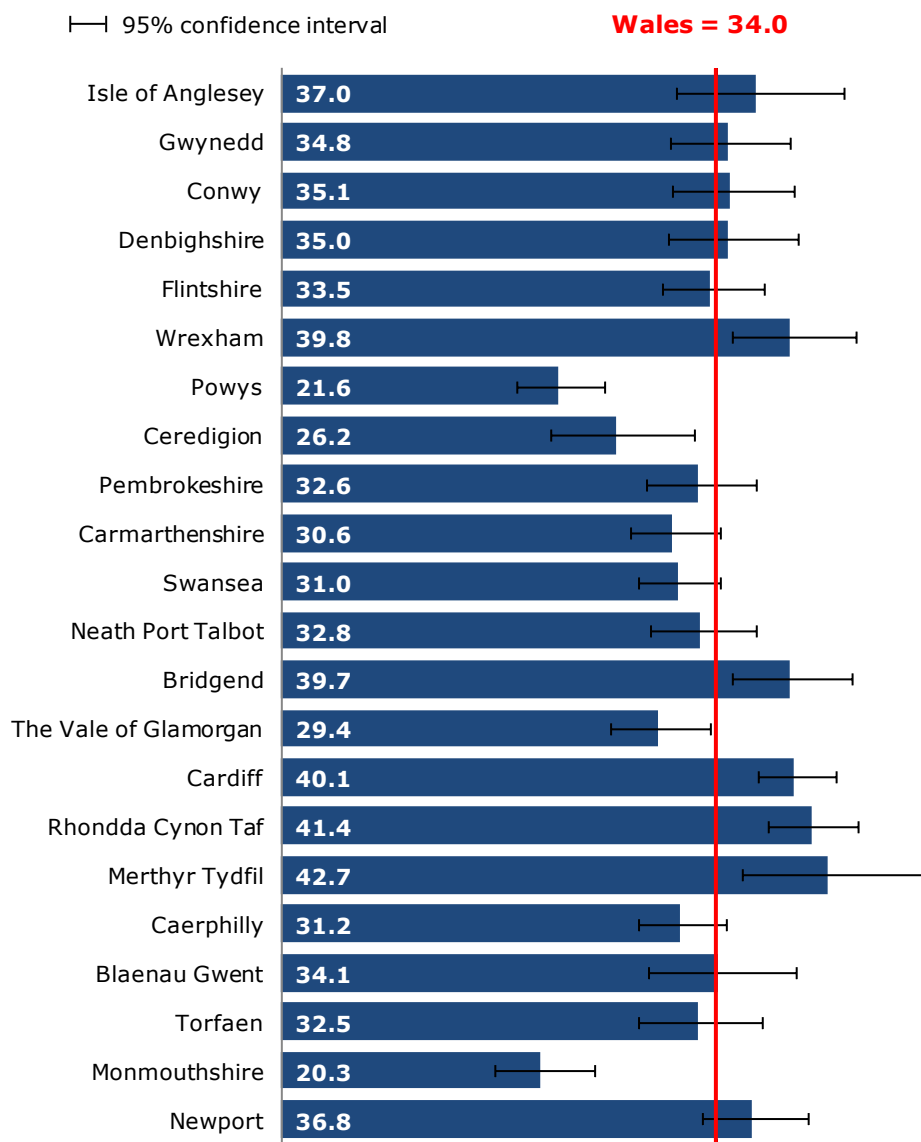
Produced by Public Health Wales Observatory, using conception data and MYE (ONS)



\* Rate per 1,000 females aged 15 - 17

**Conception rate per 1,000 females aged under 18\*, Wales local authorities, 2010- 12**

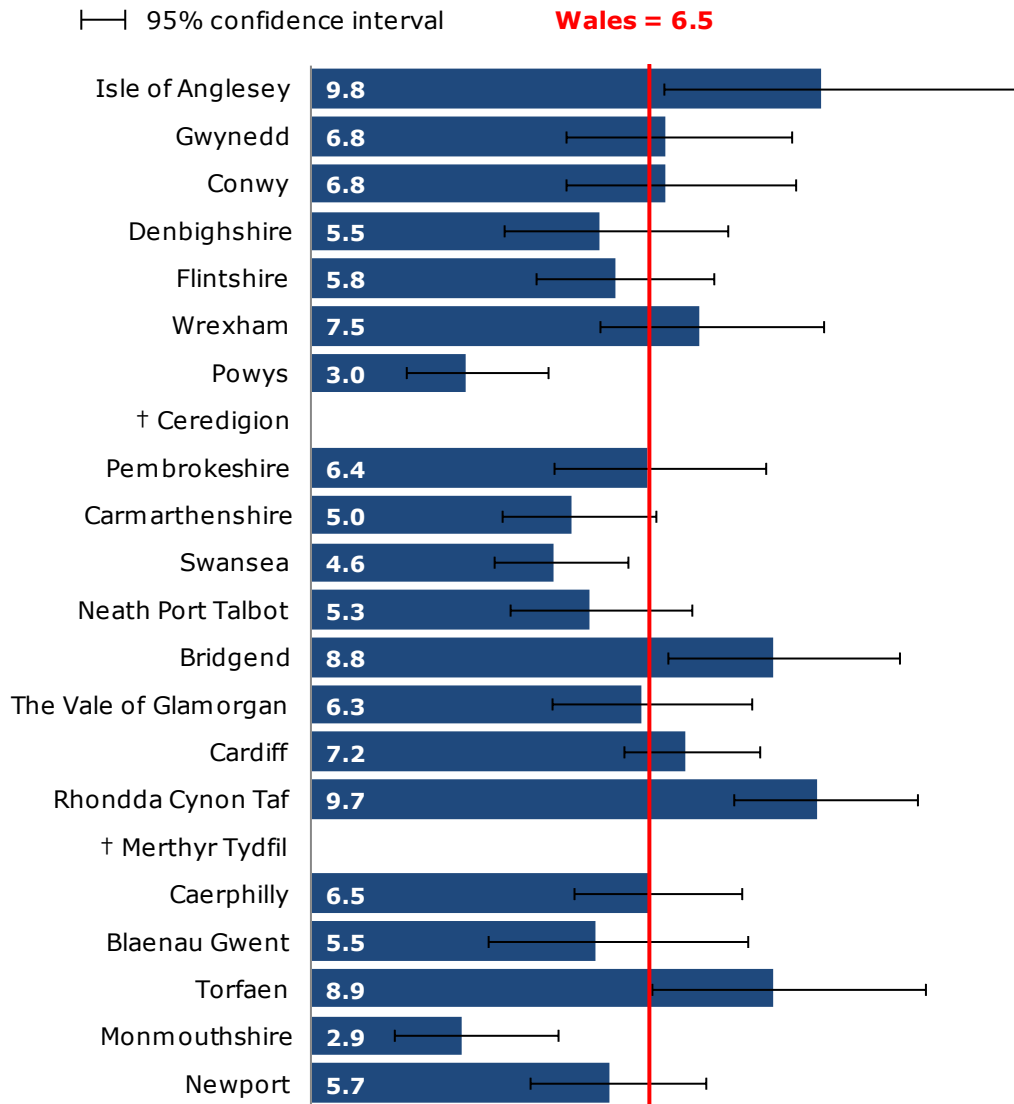
Produced by Public Health Wales Observatory, using conceptions data and MYE (ONS)



\* Rate per 1,000 females aged 15 - 17

**Conception rate per 1,000, females aged under 16\*, Wales local authorities, 2010-12**

Produced by Public Health Wales Observatory, using conceptions data and MYE (ONS)

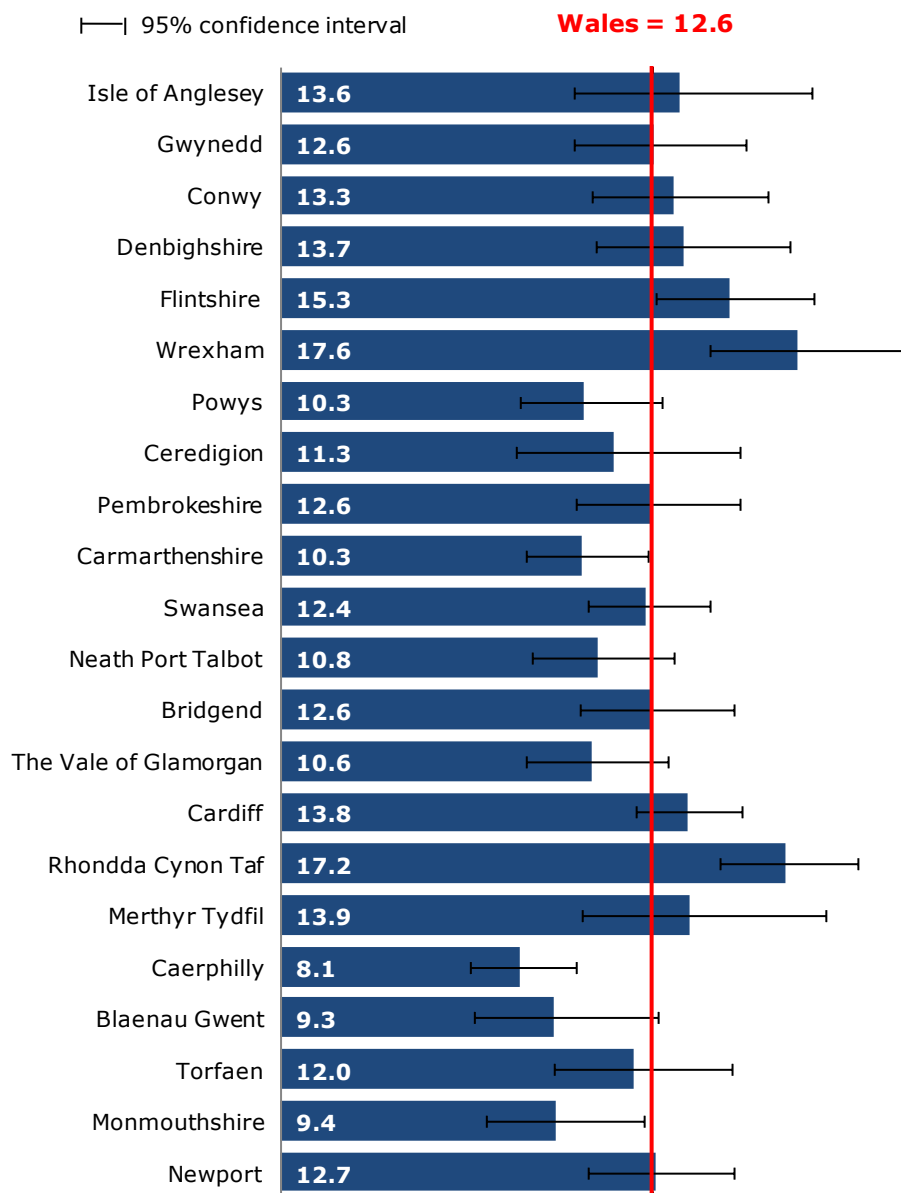


\* Rate per 1,000 females aged 13 - 15

† ONS has suppressed data where the number of conceptions was less than five

**Abortion rate per 1,000 females aged under 18\*, Wales local authorities, 2011-13**

Produced by Public Health Wales Observatory, using abortions data and MYE (ONS)



\* Rate per 1,000 females aged 15 - 17