



GIG
CYMRU
NHS
WALES

Arsyllfa Iechyd
Cyhoeddus Cymru
Public Health
Wales Observatory

Ward-level teenage conceptions in Cwm Taf UHB, 2010-12

Author: Andrew Dring, Rhys Gibbon, Rhys Powell

Date: 11 December 2014

Version: 2a

Publication/ Distribution: Internal

Purpose and Summary of Document:

This document shows information on teenage conceptions amongst females aged under 16 and 18 for the years 2010-12. It also contains ward level (also known as electoral divisions) conception rates grouped into ranges from highest to lowest shown on a map, and a table showing statistical significance compared to Wales. In addition, teenage abortions amongst female aged under 18 for the years 2011-13 are presented at local authority level. These three pieces of information should be combined to interpret the data and potentially identify areas of particular concern.

Notes:

These data need to be interpreted with extreme caution due to small numbers and population sizes, and variation in population between wards (electoral divisions). The ONS have suppressed data where counts were fewer than five in the three-year period available.

Ward rates and numbers of conceptions are subject to strict conditions of supply by ONS and cannot be shared outside of Public Health Wales or reproduced in documents/via the internet. The information in this document has specifically been prepared in a format that can be shared with external partners.

Conceptions in females aged under 18*, wards in Cwm Taf UHB, 2010-12

Local Authority	Ward Code	Ward Name	Stat. Significance compared to Wales
Rhondda Cynon Taf	W39000600	Aberaman North	No sig. Difference
Rhondda Cynon Taf	W39000601	Aberaman South	Sig. High
Rhondda Cynon Taf	W39000602	Abercynon	Sig. High
Rhondda Cynon Taf	W39000603	Aberdare East	No sig. Difference
Rhondda Cynon Taf	W39000604	Aberdare West/Llwydcoed	No sig. Difference
Rhondda Cynon Taf	W39000605	Beddau	No sig. Difference
Rhondda Cynon Taf	W39000606	Brynna	-
Rhondda Cynon Taf	W39000607	Church Village	No sig. Difference
Rhondda Cynon Taf	W39000608	Cilfynydd	-
Rhondda Cynon Taf	W39000609	Cwm Clydach	No sig. Difference
Rhondda Cynon Taf	W39000610	Cwmbach	Sig. High
Rhondda Cynon Taf	W39000611	Cymmer	Sig. High
Rhondda Cynon Taf	W39000612	Ferndale	No sig. Difference
Rhondda Cynon Taf	W39000613	Gilfach Goch	No sig. Difference
Rhondda Cynon Taf	W39000614	Glyncoch	-
Rhondda Cynon Taf	W39000615	Graig	No sig. Difference
Rhondda Cynon Taf	W39000616	Hawthorn	No sig. Difference
Rhondda Cynon Taf	W39000617	Hirwaun	No sig. Difference
Rhondda Cynon Taf	W39000618	Llanharan	No sig. Difference
Rhondda Cynon Taf	W39000619	Llanharry	-
Rhondda Cynon Taf	W39000620	Llantrisant Town	No sig. Difference
Rhondda Cynon Taf	W39000621	Llantwit Fardre	No sig. Difference
Rhondda Cynon Taf	W39000622	Llwyn-y-pia	No sig. Difference
Rhondda Cynon Taf	W39000623	Maerdy	Sig. High
Rhondda Cynon Taf	W39000624	Mountain Ash East	-
Rhondda Cynon Taf	W39000625	Mountain Ash West	No sig. Difference
Rhondda Cynon Taf	W39000626	Penrhiwceiber	No sig. Difference
Rhondda Cynon Taf	W39000627	Pentre	No sig. Difference
Rhondda Cynon Taf	W39000628	Pen-y-graig	No sig. Difference
Rhondda Cynon Taf	W39000629	Pen-y-waun	No sig. Difference
Rhondda Cynon Taf	W39000630	Pont-y-clun	Sig. Low
Rhondda Cynon Taf	W39000631	Pontypridd Town	-
Rhondda Cynon Taf	W39000632	Porth	No sig. Difference
Rhondda Cynon Taf	W39000633	Rhigos	-

Local Authority	Ward Code	Ward Name	Stat. Significance compared to Wales
Rhondda Cynon Taf	W39000634	Rhondda	No sig. Difference
Rhondda Cynon Taf	W39000635	Rhydfelen Central/Ilan	No sig. Difference
Rhondda Cynon Taf	W39000636	Taffs Well	-
Rhondda Cynon Taf	W39000637	Talbot Green	-
Rhondda Cynon Taf	W39000638	Ton-teg	-
Rhondda Cynon Taf	W39000639	Tonypandy	No sig. Difference
Rhondda Cynon Taf	W39000640	Tonyrefail East	No sig. Difference
Rhondda Cynon Taf	W39000641	Tonyrefail West	No sig. Difference
Rhondda Cynon Taf	W39000642	Trallwng	No sig. Difference
Rhondda Cynon Taf	W39000643	Trealaw	No sig. Difference
Rhondda Cynon Taf	W39000644	Treforest	-
Rhondda Cynon Taf	W39000645	Treherbert	No sig. Difference
Rhondda Cynon Taf	W39000646	Treorchy	No sig. Difference
Rhondda Cynon Taf	W39000647	Tylorstown	Sig. High
Rhondda Cynon Taf	W39000648	Tyn-y-nant	No sig. Difference
Rhondda Cynon Taf	W39000649	Ynyshir	No sig. Difference
Rhondda Cynon Taf	W39000650	Ynysybwl	No sig. Difference
Rhondda Cynon Taf	W39000651	Ystrad	No sig. Difference
Merthyr Tydfil	W39000858	Bedlinog	No sig. Difference
Merthyr Tydfil	W39000859	Cyfarthfa	No sig. Difference
Merthyr Tydfil	W39000860	Dowlais	No sig. Difference
Merthyr Tydfil	W39000861	Gurnos	Sig. High
Merthyr Tydfil	W39000862	Merthyr Vale	Sig. High
Merthyr Tydfil	W39000863	Park	-
Merthyr Tydfil	W39000864	Penydarren	No sig. Difference
Merthyr Tydfil	W39000865	Plymouth	No sig. Difference
Merthyr Tydfil	W39000866	Town	No sig. Difference
Merthyr Tydfil	W39000867	Treharris	No sig. Difference
Merthyr Tydfil	W39000868	Vaynor	-

Produced by Public Health Wales Observatory, conception data and MYE (ONS)

* numbers and rates subject to strict disclosure control; statistical significance of rates per 1,000 females (aged 15 - 17)

'-' Suppressed data

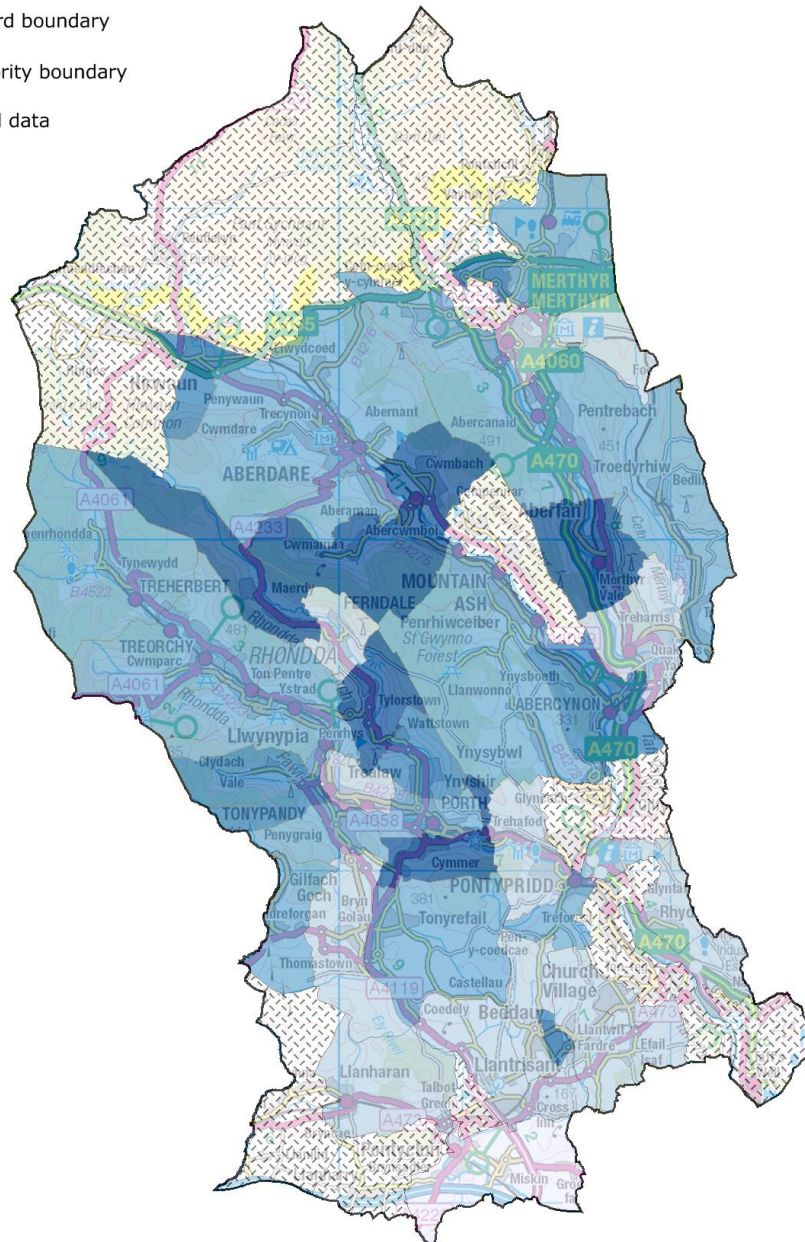
Conceptions in females aged under 18, Cwm Taf UHB, 2010 - 12

Wards, rate per 1,000 females aged 15 - 17

- 70.8 to 88.6 (6)
- 53.1 to <70.8 (7)
- 35.4 to <53.1 (22)
- 17.7 to <35.4 (14)
- 0.0 to <17.7 (1)

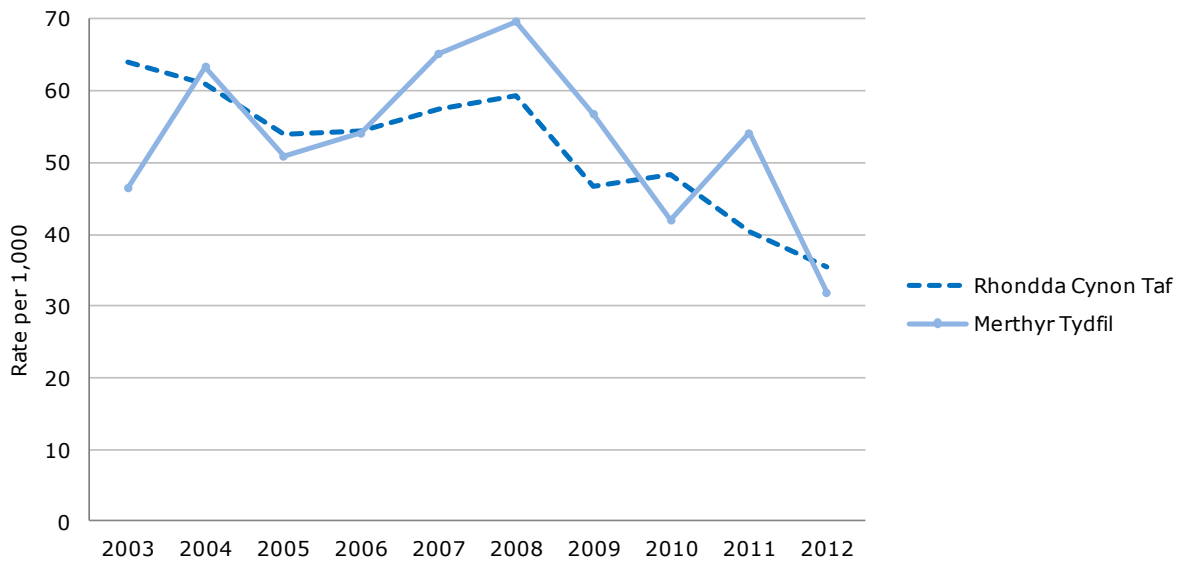
- ▭ Health board boundary
- ▭ Local authority boundary
- ▨ Suppressed data

Wales rate: 34.0



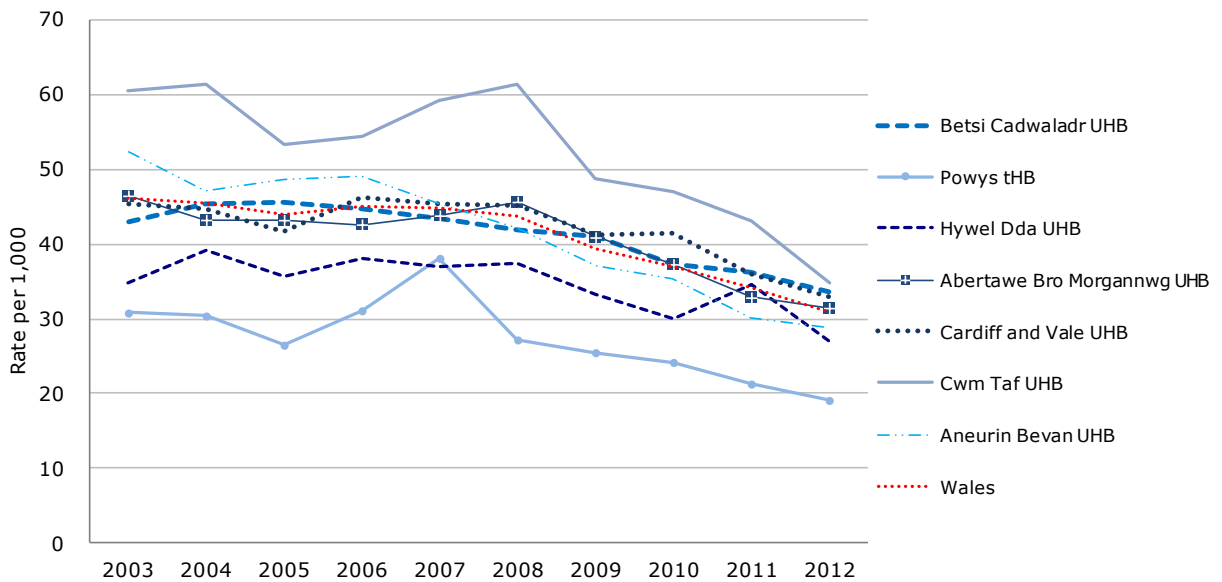
Produced by Public Health Wales Observatory, using conceptions data and MYE (ONS)
 © Crown Copyright and database right 2014, Ordnance Survey 100044810
 Numbers and rates subject to strict disclosure control

Conception rate per 1,000 females aged under 18*, local authorities within Cwm Taf UHB, 2003 - 12
 Produced by Public Health Wales Observatory, using conception data and MYE (ONS)



* Rate per 1,000 females aged 15 - 17

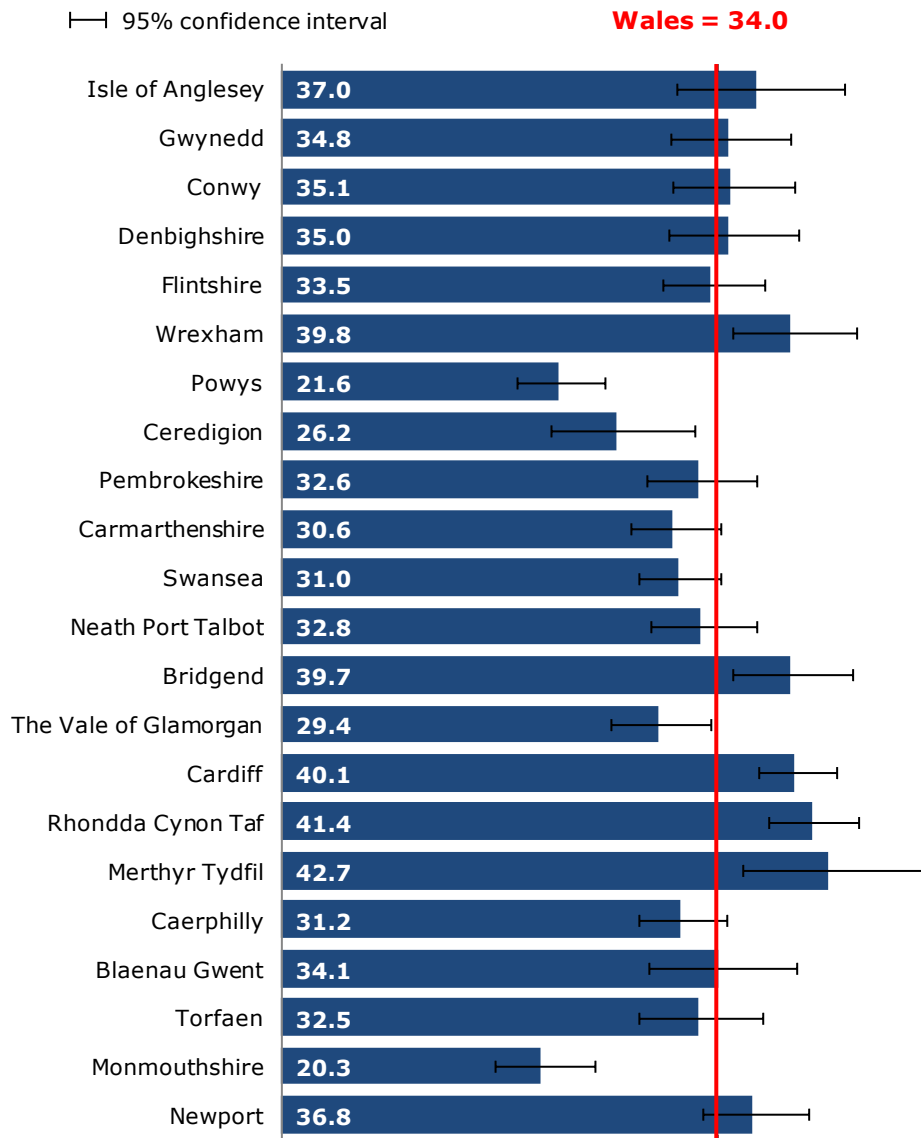
Conception rate per 1,000 females aged under 18*, health boards within Wales, 2003 - 12
 Produced by Public Health Wales Observatory, using conception data and MYE (ONS)



* Rate per 1,000 females aged 15 - 17

Conception rate per 1,000 females aged under 18*, Wales local authorities, 2010- 12

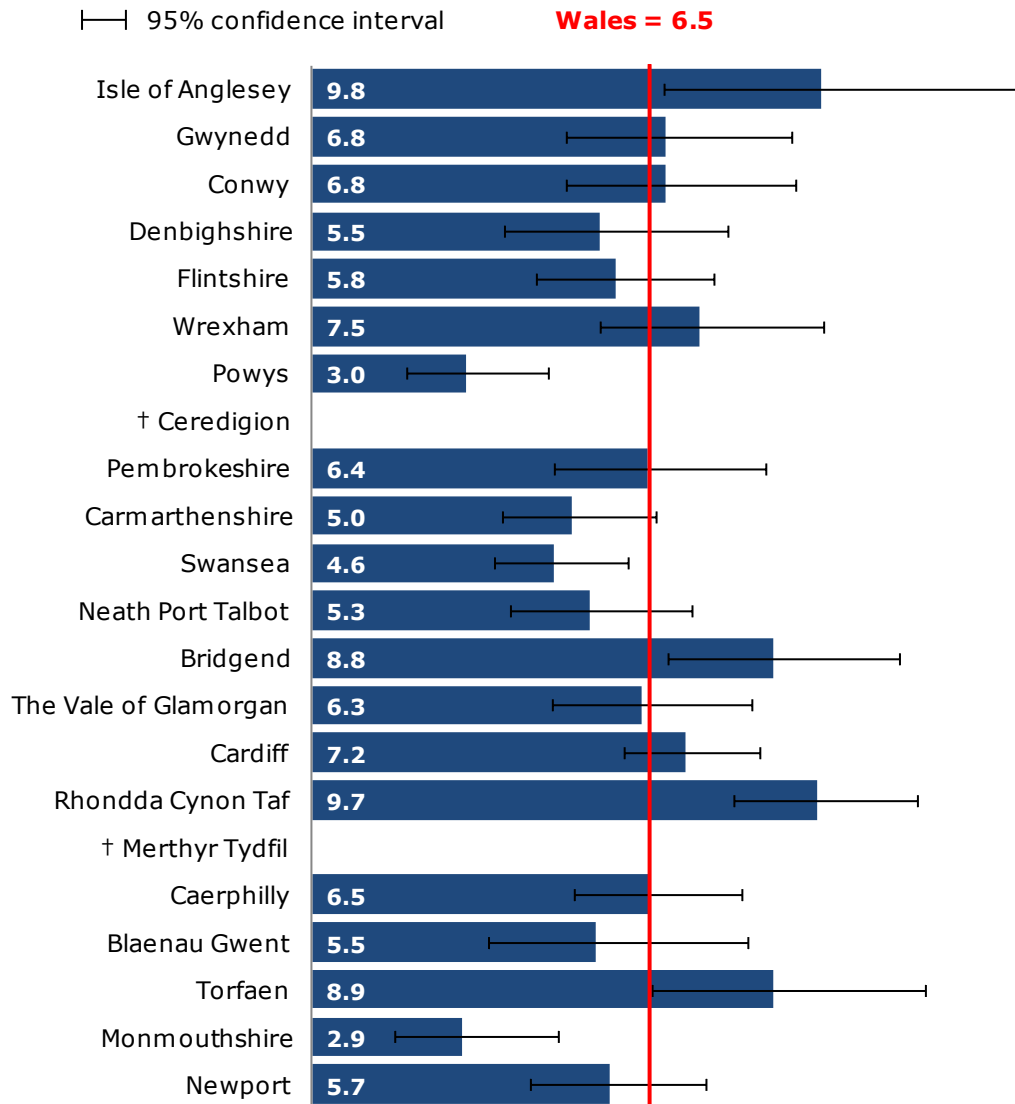
Produced by Public Health Wales Observatory, using conceptions data and MYE (ONS)



* Rate per 1,000 females aged 15 - 17

Conception rate per 1,000, females aged under 16*, Wales local authorities, 2010-12

Produced by Public Health Wales Observatory, using conceptions data and MYE (ONS)

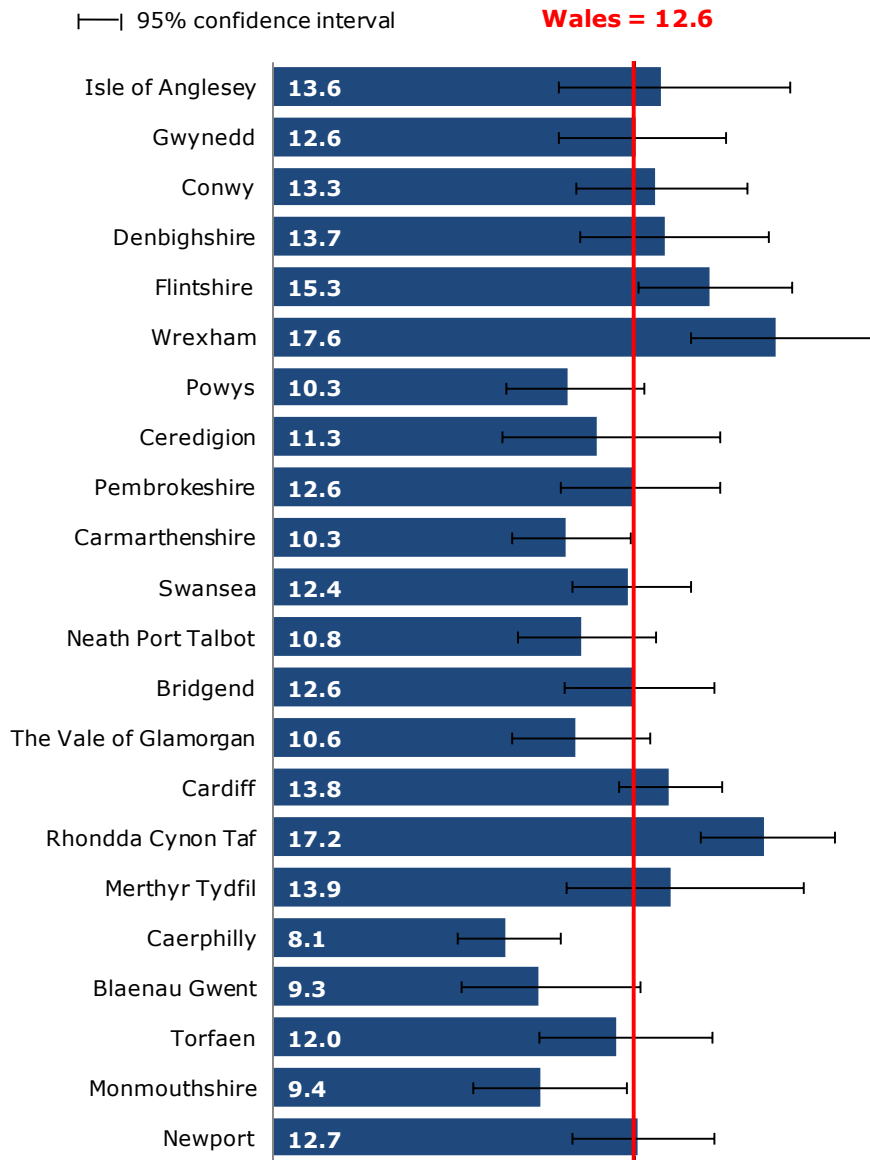


* Rate per 1,000 females aged 13 - 15

† ONS has suppressed data where the number of conceptions was less than five

Abortion rate per 1,000 females aged under 18*, Wales local authorities, 2011-13

Produced by Public Health Wales Observatory, using abortions data and MYE (ONS)



* Rate per 1,000 females aged 15 - 17