



GIG
CYMRU
NHS
WALES

Arsyllfa Iechyd
Cyhoeddus Cymru
Public Health
Wales Observatory

Ward-level teenage conceptions in Cardiff and Vale UHB, 2010-12

Author: Andrew Dring, Rhys Gibbon, Rhys Powell

Date: 11 December 2014

Version: 2a

Publication/ Distribution: Internal

Purpose and Summary of Document:

This document shows information on teenage conceptions amongst females aged under 16 and 18 for the years 2010-12. It also contains ward level (also known as electoral divisions) conception rates grouped into ranges from highest to lowest shown on a map, and a table showing statistical significance compared to Wales. In addition, teenage abortions amongst female aged under 18 for the years 2011-13 are presented at local authority level. These three pieces of information should be combined to interpret the data and potentially identify areas of particular concern.

Notes:

These data need to be interpreted with extreme caution due to small numbers and population sizes, and variation in population between wards (electoral divisions). The ONS have suppressed data where counts were fewer than five in the three-year period available.

Ward rates and numbers of conceptions are subject to strict conditions of supply by ONS and cannot be shared outside of Public Health Wales or reproduced in documents/via the internet. The information in this document has specifically been prepared in a format that can be shared with external partners.

Conceptions in females aged under 18*, wards in Cardiff and Vale UHB, 2010-12

Local Authority	Ward Code	Ward Name	Stat. Significance compared to Wales
Vale of Glamorgan	W39000548	Baruc	No sig. Difference
Vale of Glamorgan	W39000549	Buttrills	Sig. High
Vale of Glamorgan	W39000550	Cadoc	No sig. Difference
Vale of Glamorgan	W39000551	Castleland	Sig. High
Vale of Glamorgan	W39000552	Cornerswell	No sig. Difference
Vale of Glamorgan	W39000553	Court	No sig. Difference
Vale of Glamorgan	W39000554	Cowbridge	-
Vale of Glamorgan	W39000555	Dinas Powys	No sig. Difference
Vale of Glamorgan	W39000556	Dyfan	No sig. Difference
Vale of Glamorgan	W39000557	Gibbonsdown	No sig. Difference
Vale of Glamorgan	W39000558	Illtyd	No sig. Difference
Vale of Glamorgan	W39000559	Llandough	-
Vale of Glamorgan	W39000560	Llandow/Ewenny	No sig. Difference
Vale of Glamorgan	W39000561	Llantwit Major	Sig. Low
Vale of Glamorgan	W39000562	Peterston-super-Ely	-
Vale of Glamorgan	W39000563	Plymouth	-
Vale of Glamorgan	W39000564	Rhose	-
Vale of Glamorgan	W39000565	St. Athan	No sig. Difference
Vale of Glamorgan	W39000566	St. Augustine's	No sig. Difference
Vale of Glamorgan	W39000567	St. Bride's Major	-
Vale of Glamorgan	W39000568	Stanwell	No sig. Difference
Vale of Glamorgan	W39000569	Sully	-
Vale of Glamorgan	W39000570	Wenvoe	-
Cardiff	W39000571	Adamsdown	Sig. High
Cardiff	W39000572	Butetown	No sig. Difference
Cardiff	W39000573	Caerau	Sig. High
Cardiff	W39000574	Canton	No sig. Difference
Cardiff	W39000575	Cathays	Sig. High
Cardiff	W39000576	Creigiau/St. Fagans	No sig. Difference
Cardiff	W39000577	Cyncoed	-
Cardiff	W39000578	Ely	Sig. High
Cardiff	W39000579	Fairwater	No sig. Difference
Cardiff	W39000580	Gabalfa	No sig. Difference
Cardiff	W39000581	Grangetown	Sig. High
Cardiff	W39000582	Heath	Sig. Low
Cardiff	W39000583	Lisvane	-
Cardiff	W39000584	Llandaff	-

Local Authority	Ward Code	Ward Name	Stat. Significance compared to Wales
Cardiff	W39000585	Llandaff North	No sig. Difference
Cardiff	W39000586	Llanishen	No sig. Difference
Cardiff	W39000587	Llanrumney	Sig. High
Cardiff	W39000588	Pentwyn	Sig. High
Cardiff	W39000589	Pentyrch	No sig. Difference
Cardiff	W39000590	Penylan	Sig. Low
Cardiff	W39000591	Plasnewydd	No sig. Difference
Cardiff	W39000592	Pontprennau/Old St. Mellons	No sig. Difference
Cardiff	W39000593	Radyr	-
Cardiff	W39000594	Rhiwbina	Sig. Low
Cardiff	W39000595	Riverside	No sig. Difference
Cardiff	W39000596	Rumney	No sig. Difference
Cardiff	W39000597	Splott	Sig. High
Cardiff	W39000598	Trowbridge	Sig. High
Cardiff	W39000599	Whitchurch and Tongwynlais	No sig. Difference

Produced by Public Health Wales Observatory, conception data and MYE (ONS)

* numbers and rates subject to strict disclosure control; statistical significance of rates per 1,000 females (aged 15 - 17)

'-' Suppressed data

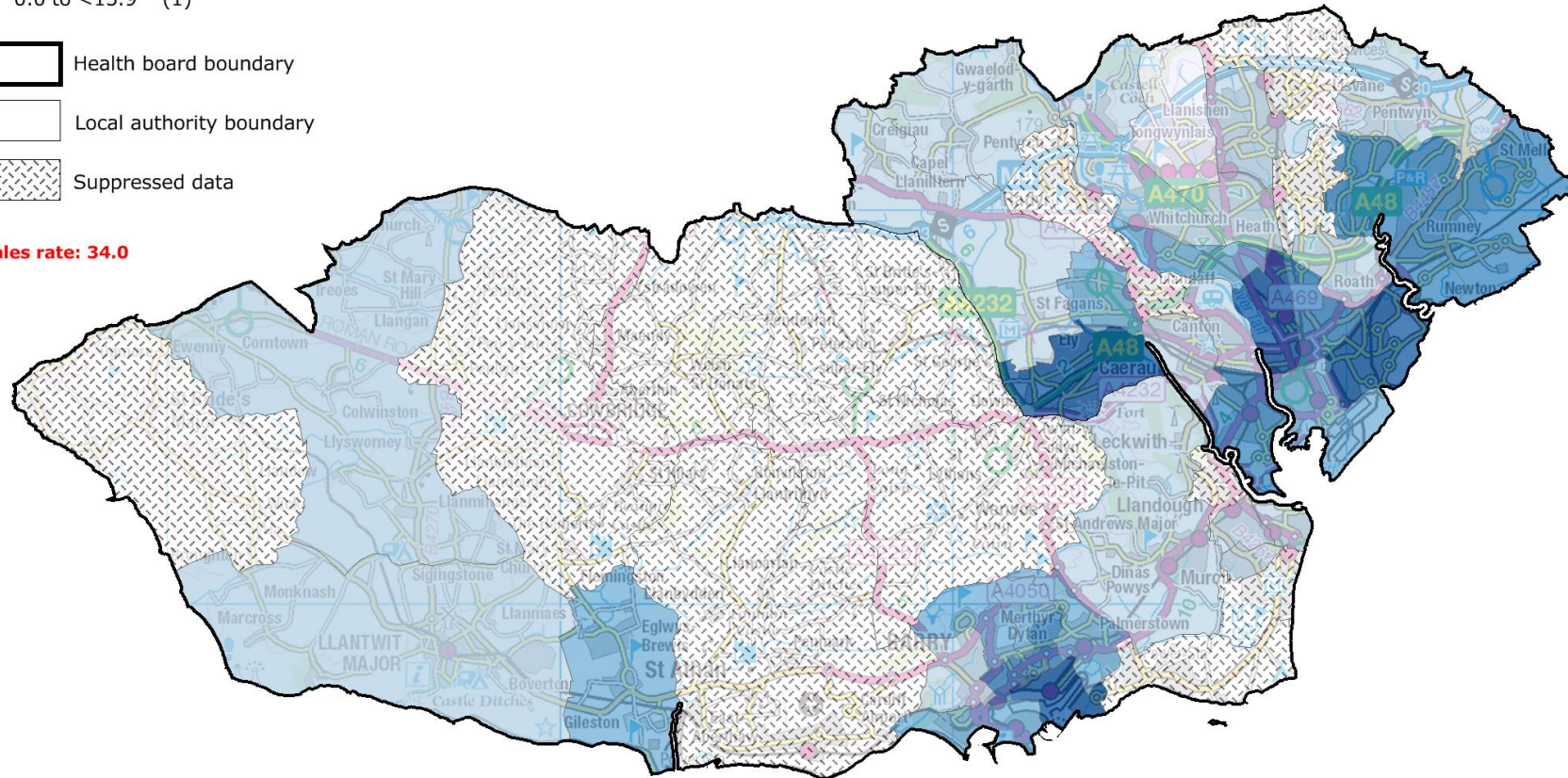
Conceptions in females aged under 18, Cardiff & Vale UHB, 2010 - 12

Wards, rate per 1,000 females aged 15 - 17

- 63.6 to 79.6 (5)
- 47.7 to <63.6 (9)
- 31.8 to <47.7 (9)
- 15.9 to <31.8 (16)
- 0.0 to <15.9 (1)

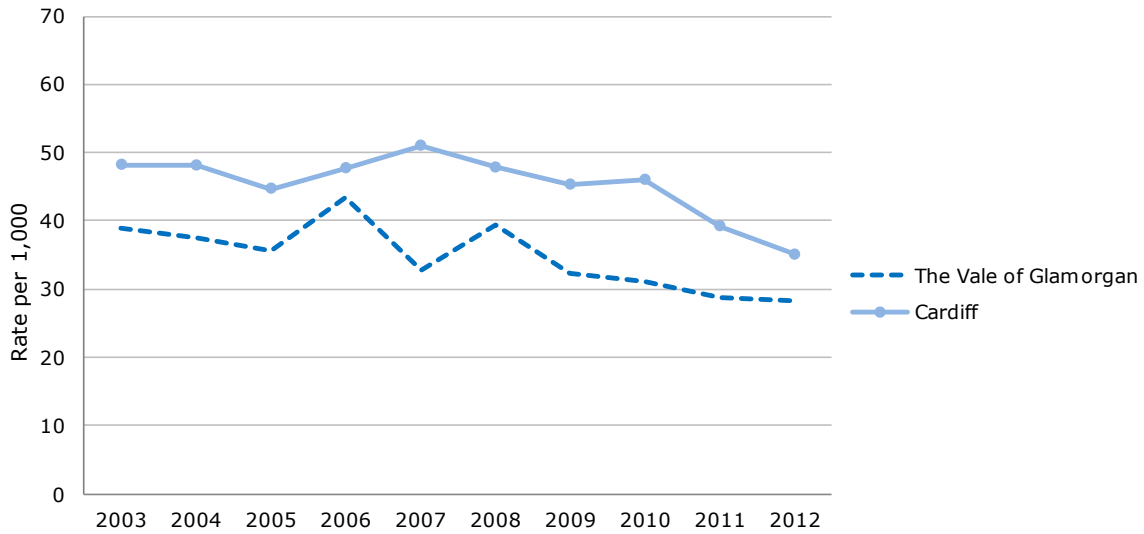
- ▭ Health board boundary
- ▭ Local authority boundary
- ▨ Suppressed data

Wales rate: 34.0



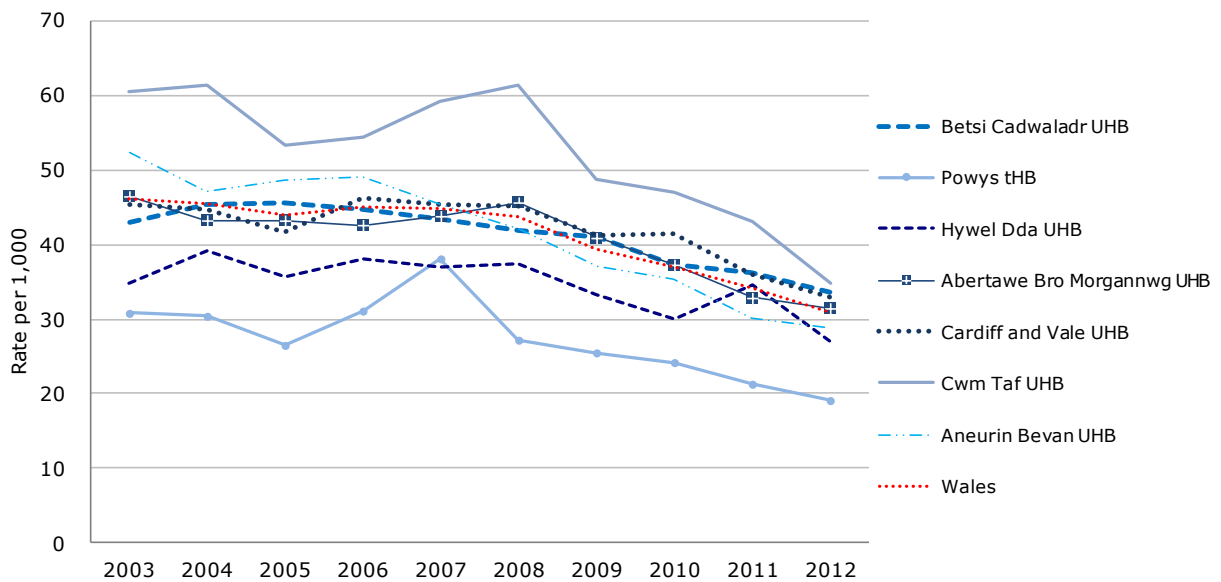
Produced by Public Health Wales Observatory, using conceptions data and MYE (ONS)
 © Crown Copyright and database right 2014, Ordnance Survey 100044810
 Numbers and rates subject to strict disclosure control

Conception rate per 1,000 females aged under 18*, local authorities within Cardiff & Vale UHB, 2003 - 12
 Produced by Public Health Wales Observatory, using conception data and MYE (ONS)



* Rate per 1,000 females aged 15 - 17

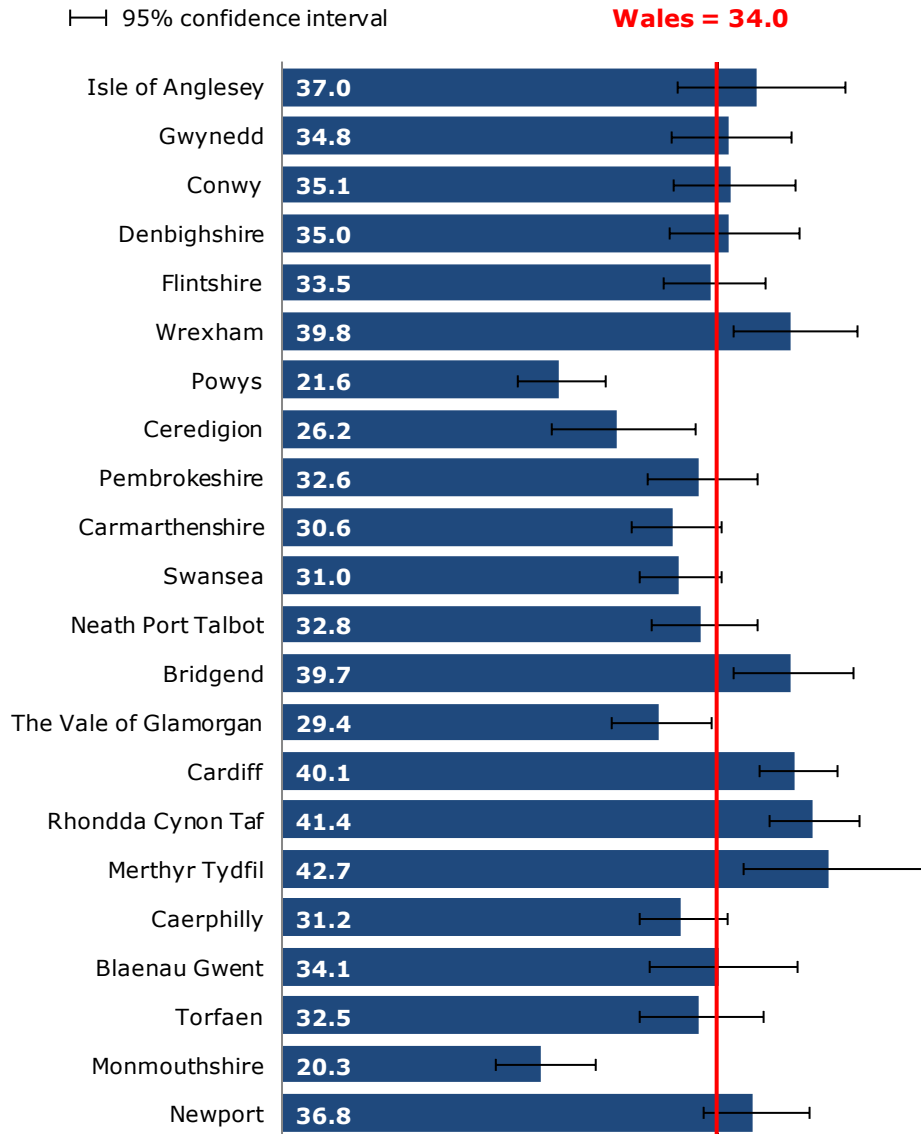
Conception rate per 1,000 females aged under 18*, health boards within Wales, 2003 - 12
 Produced by Public Health Wales Observatory, using conception data and MYE (ONS)



* Rate per 1,000 females aged 15 - 17

Conception rate per 1,000 females aged under 18*, Wales local authorities, 2010- 12

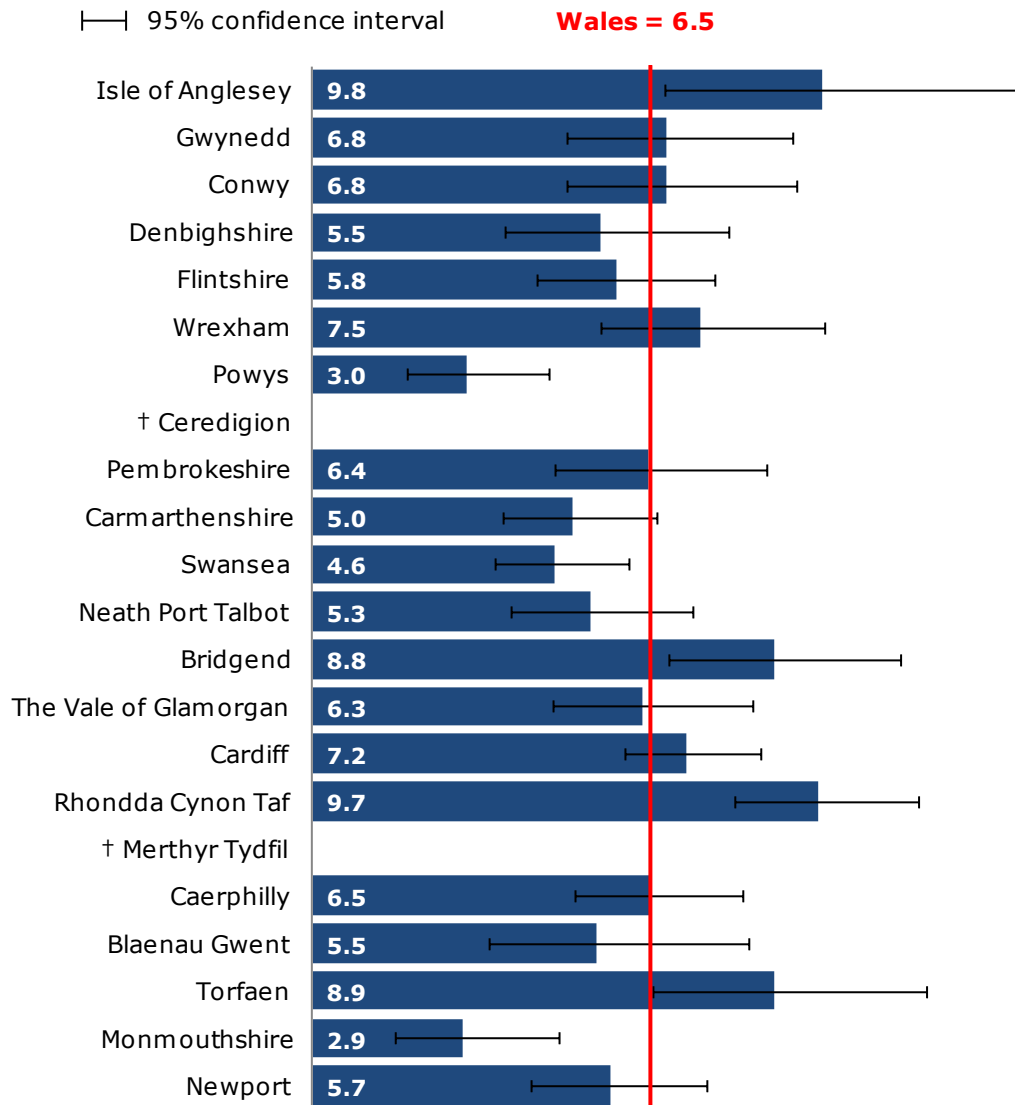
Produced by Public Health Wales Observatory, using conceptions data and MYE (ONS)



* Rate per 1,000 females aged 15 - 17

Conception rate per 1,000, females aged under 16*, Wales local authorities, 2010-12

Produced by Public Health Wales Observatory, using conceptions data and MYE (ONS)

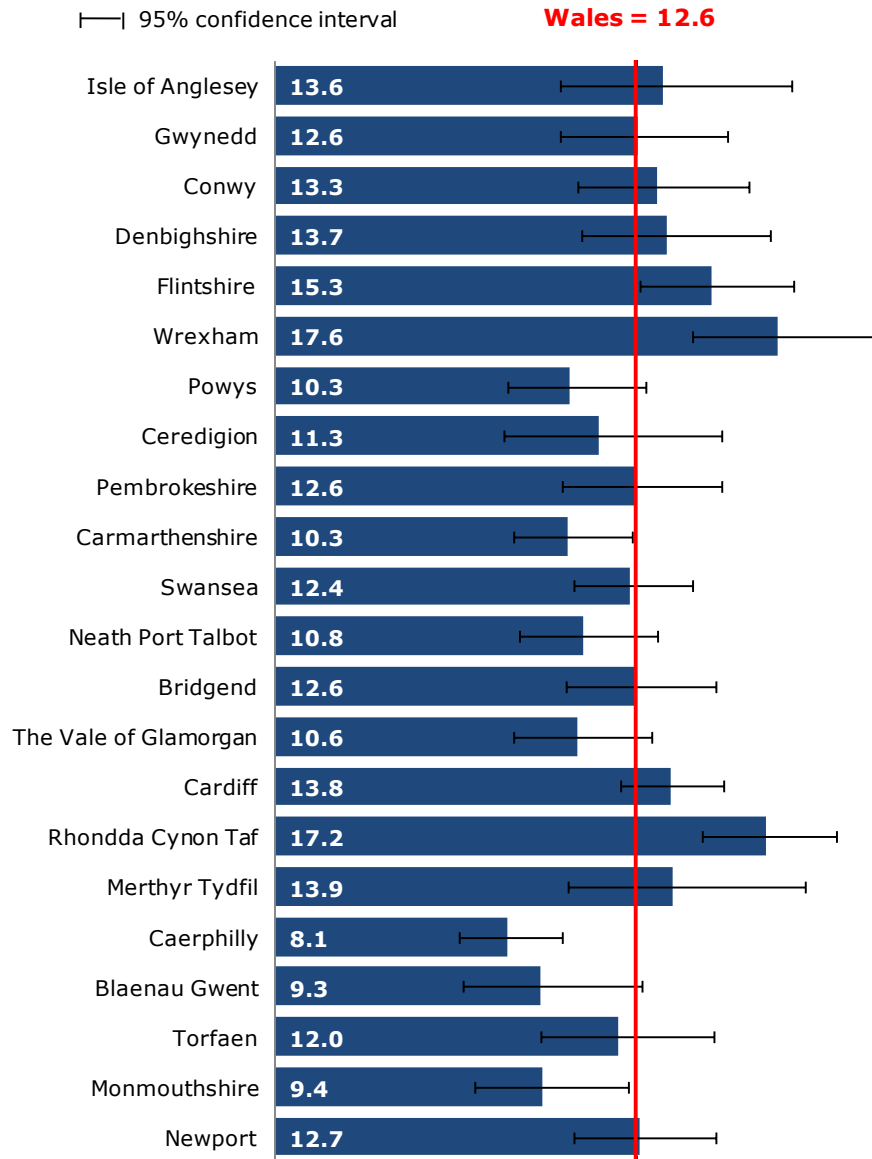


* Rate per 1,000 females aged 13 - 15

† ONS has suppressed data where the number of conceptions was less than five

Abortion rate per 1,000 females aged under 18*, Wales local authorities, 2011-13

Produced by Public Health Wales Observatory, using abortions data and MYE (ONS)



* Rate per 1,000 females aged 15 - 17