



GIG
CYMRU
NHS
WALES

Arsyllfa Iechyd
Cyhoeddus Cymru
Public Health
Wales Observatory

Ward-level teenage conceptions in Betsi Cadwaladr UHB, 2010-12

Author: Andrew Dring, Rhys Gibbon, Rhys Powell

Date: 11 December 2014

Version: 2a

Publication/ Distribution: Internal

Purpose and Summary of Document:

This document shows information on teenage conceptions amongst females aged under 16 and 18 for the years 2010-12. It also contains ward level (also known as electoral divisions) conception rates grouped into ranges from highest to lowest shown on a map, and a table showing statistical significance compared to Wales. In addition, teenage abortions amongst female aged under 18 for the years 2011-13 are presented at local authority level. These three pieces of information should be combined to interpret the data and potentially identify areas of particular concern.

Notes:

These data need to be interpreted with extreme caution due to small numbers and population sizes, and variation in population between wards (electoral divisions). The ONS have suppressed data where counts were fewer than five in the three-year period available.

Ward rates and numbers of conceptions are subject to strict conditions of supply by ONS and cannot be shared outside of Public Health Wales or reproduced in documents/via the internet. The information in this document has specifically been prepared in a format that can be shared with external partners.

Conceptions in females aged under 18*, wards in Betsi Cadwaladr UHB, 2010-12

Local Authority	Ward Code	Ward Name	Stat. Significance compared to Wales
Isle of Anglesey	W39000001	Aberffraw Rhosneigr	-
Isle of Anglesey	W39000002	Amlwch Port	Sig. High
Isle of Anglesey	W39000003	Amlwch Rural	-
Isle of Anglesey	W39000004	Beaumaris	-
Isle of Anglesey	W39000005	Bodffordd	-
Isle of Anglesey	W39000006	Bodorgan	-
Isle of Anglesey	W39000007	Braint	-
Isle of Anglesey	W39000008	Bryngwran	-
Isle of Anglesey	W39000009	Brynteg	-
Isle of Anglesey	W39000010	Cadnant	-
Isle of Anglesey	W39000011	Cefni	-
Isle of Anglesey	W39000012	Cwm Cadnant	-
Isle of Anglesey	W39000013	Cyngar	-
Isle of Anglesey	W39000014	Gwyngyll	-
Isle of Anglesey	W39000015	Holyhead Town	-
Isle of Anglesey	W39000016	Kingsland	-
Isle of Anglesey	W39000017	Llanbadrig	-
Isle of Anglesey	W39000018	Llanbedrgoch	-
Isle of Anglesey	W39000019	Llanddyfnan	-
Isle of Anglesey	W39000020	Llaneilian	-
Isle of Anglesey	W39000021	Llanfaethlu	-
Isle of Anglesey	W39000022	Llanfair-yn-Neubwll	-
Isle of Anglesey	W39000023	Llanfihangel Ysgeifiog	No sig. Difference
Isle of Anglesey	W39000024	Llangoed	-
Isle of Anglesey	W39000025	Llanidan	-
Isle of Anglesey	W39000026	Llannerch-y-medd	-
Isle of Anglesey	W39000027	London Road	-
Isle of Anglesey	W39000028	Maeshyfyd	-
Isle of Anglesey	W39000029	Mechell	-
Isle of Anglesey	W39000030	Moelfre	-
Isle of Anglesey	W39000031	Morawelon	-
Isle of Anglesey	W39000032	Parc a'r Mynydd	-
Isle of Anglesey	W39000033	Pentraeth	-
Isle of Anglesey	W39000034	Porthyfelin	No sig. Difference
Isle of Anglesey	W39000035	Rhosyr	-
Isle of Anglesey	W39000036	Trearddur	-

Local Authority	Ward Code	Ward Name	Stat. Significance compared to Wales
Isle of Anglesey	W39000037	Tudur	-
Isle of Anglesey	W39000038	Tysilio	-
Isle of Anglesey	W39000039	Valley	-
Gwynedd	W39000040	Aberdaron Botwnnog Tudweiliog	-
Gwynedd	W39000041	Aberdovey	-
Gwynedd	W39000042	Abererch	-
Gwynedd	W39000043	Abermaw	No sig. Difference
Gwynedd	W39000044	Abersoch Llanengan	-
Gwynedd	W39000045	Arlechwedd	-
Gwynedd	W39000046	Bala Llanuwchllyn	No sig. Difference
Gwynedd	W39000047	Bethel	-
Gwynedd	W39000048	Bontnewydd	-
Gwynedd	W39000049	Bowydd and Rhiw	No sig. Difference
Gwynedd	W39000050	Brithdir and Llanfachreth/Ganllwyd/Llanelltyd	-
Gwynedd	W39000051	Bryn-crug/Llanfihangel Llangelynin	-
Gwynedd	W39000052	Cadnant	-
Gwynedd	W39000053	Clynnog Llanllyfni	-
Gwynedd	W39000054	Corris/Mawddwy	-
Gwynedd	W39000055	Criccieth	No sig. Difference
Gwynedd	W39000056	Cwm-y-Glo Llanrug	Sig. High
Gwynedd	W39000057	Deiniol	-
Gwynedd	W39000058	Deiniolen	-
Gwynedd	W39000059	Dewi	-
Gwynedd	W39000060	Diffwys and Maenofferen	-
Gwynedd	W39000061	Dolbenmaen	-
Gwynedd	W39000062	Dolgellau North	-
Gwynedd	W39000063	Dolgellau South	-
Gwynedd	W39000064	Dyffryn Ardudwy	-
Gwynedd	W39000065	Efail-newydd/Buan	-
Gwynedd	W39000066	Garth Menai (Bangor)	-
Gwynedd	W39000067	Gerlan	-
Gwynedd	W39000068	Glyder	-
Gwynedd	W39000069	Groeslon	-
Gwynedd	W39000070	Harlech	-
Gwynedd	W39000071	Hendre	-
Gwynedd	W39000072	Hirael	-
Gwynedd	W39000073	Llanaelhaearn	-
Gwynedd	W39000074	Llanbedr	-

Local Authority	Ward Code	Ward Name	Stat. Significance compared to Wales
Gwynedd	W39000075	Llanbedrog	-
Gwynedd	W39000076	Llanberis	-
Gwynedd	W39000077	Llandderfel	-
Gwynedd	W39000078	Llanwnda	-
Gwynedd	W39000079	Llanystumdwy	-
Gwynedd	W39000080	Marchog	Sig. High
Gwynedd	W39000081	Menai (Caernarfon)	-
Gwynedd	W39000082	Morfa Nefyn	-
Gwynedd	W39000083	Nefyn	-
Gwynedd	W39000084	Ogwen	No sig. Difference
Gwynedd	W39000085	Peblig (Caernarfon)	No sig. Difference
Gwynedd	W39000086	Penisarwaun	-
Gwynedd	W39000087	Penrhyndeudraeth	No sig. Difference
Gwynedd	W39000088	Pentir	-
Gwynedd	W39000089	Penygroes	-
Gwynedd	W39000090	Porthmadog East	-
Gwynedd	W39000091	Porthmadog West	-
Gwynedd	W39000092	Porthmadog-Tremadog	-
Gwynedd	W39000093	Pwllheli North	-
Gwynedd	W39000094	Pwllheli South	-
Gwynedd	W39000095	Seiont	Sig. High
Gwynedd	W39000096	Talysarn	-
Gwynedd	W39000097	Teigl	-
Gwynedd	W39000098	Trawsfynydd	-
Gwynedd	W39000099	Tregarth & Mynydd Llandygai	-
Gwynedd	W39000100	Tywyn	No sig. Difference
Gwynedd	W39000101	Waunfawr	-
Gwynedd	W39000102	Y Felinheli	-
Conwy	W39000103	Abergele Pensarn	-
Conwy	W39000104	Betws yn Rhos	-
Conwy	W39000105	Betws-y-Coed	-
Conwy	W39000106	Bryn	-
Conwy	W39000107	Caerhun	-
Conwy	W39000108	Capelulo	-
Conwy	W39000109	Colwyn	No sig. Difference
Conwy	W39000110	Conwy	-
Conwy	W39000111	Craig-y-Don	No sig. Difference
Conwy	W39000112	Crwst	No sig. Difference

Local Authority	Ward Code	Ward Name	Stat. Significance compared to Wales
Conwy	W39000113	Deganwy	-
Conwy	W39000114	Eglwysbach	-
Conwy	W39000115	Eirias	No sig. Difference
Conwy	W39000116	Gele	No sig. Difference
Conwy	W39000117	Glyn	No sig. Difference
Conwy	W39000118	Gogarth	-
Conwy	W39000119	Gower	-
Conwy	W39000120	Kinmel Bay	No sig. Difference
Conwy	W39000121	Llanddulas	-
Conwy	W39000122	Llandrillo yn Rhos	No sig. Difference
Conwy	W39000123	Llangernyw	-
Conwy	W39000124	Llansanffraid	-
Conwy	W39000125	Llansannan	-
Conwy	W39000126	Llysfaen	No sig. Difference
Conwy	W39000127	Marl	No sig. Difference
Conwy	W39000128	Mochdre	-
Conwy	W39000129	Mostyn	No sig. Difference
Conwy	W39000130	Pandy	No sig. Difference
Conwy	W39000131	Pant-yr-afon/Penmaenan	No sig. Difference
Conwy	W39000132	Penrhyn	No sig. Difference
Conwy	W39000133	Pensarn	No sig. Difference
Conwy	W39000134	Pentre Mawr	No sig. Difference
Conwy	W39000135	Rhiw	No sig. Difference
Conwy	W39000136	Towyn	-
Conwy	W39000137	Trefriw	-
Conwy	W39000138	Tudno	No sig. Difference
Conwy	W39000139	Uwch Conwy	-
Conwy	W39000140	Uwchaled	-
Denbighshire	W39000141	Bodelwyddan	-
Denbighshire	W39000142	Corwen	No sig. Difference
Denbighshire	W39000143	Denbigh Central	-
Denbighshire	W39000144	Denbigh Lower	No sig. Difference
Denbighshire	W39000145	Denbigh Upper/Henllan	No sig. Difference
Denbighshire	W39000146	Dyserth	No sig. Difference
Denbighshire	W39000147	Efenechtyd	-
Denbighshire	W39000148	Llanarmon-yn-Ial/Llandegla	-
Denbighshire	W39000149	Llanbedr Dyffryn Clwyd/Llangynhafal	-
Denbighshire	W39000150	Llandrillo	-

Local Authority	Ward Code	Ward Name	Stat. Significance compared to Wales
Denbighshire	W39000151	Llandyrnog	-
Denbighshire	W39000152	Llanfair Dyffryn Clwyd/Gwyddelwern	-
Denbighshire	W39000153	Llangollen	-
Denbighshire	W39000154	Llanrhaeadr-yng-Nghinmeirch	-
Denbighshire	W39000155	Prestatyn Central	No sig. Difference
Denbighshire	W39000156	Prestatyn East	No sig. Difference
Denbighshire	W39000157	Prestatyn Meliden	-
Denbighshire	W39000158	Prestatyn North	No sig. Difference
Denbighshire	W39000159	Prestatyn South West	No sig. Difference
Denbighshire	W39000160	Rhuddlan	No sig. Difference
Denbighshire	W39000161	Rhyl East	No sig. Difference
Denbighshire	W39000162	Rhyl South	No sig. Difference
Denbighshire	W39000163	Rhyl South East	No sig. Difference
Denbighshire	W39000164	Rhyl South West	No sig. Difference
Denbighshire	W39000165	Rhyl West	Sig. High
Denbighshire	W39000166	Ruthin	No sig. Difference
Denbighshire	W39000167	St. Asaph East	-
Denbighshire	W39000168	St. Asaph West	-
Denbighshire	W39000169	Trefnant	-
Denbighshire	W39000170	Tremeirchion	-
Flintshire	W39000171	Argoed	-
Flintshire	W39000172	Aston	-
Flintshire	W39000173	Bagillt East	-
Flintshire	W39000174	Bagillt West	-
Flintshire	W39000175	Broughton North East	-
Flintshire	W39000176	Broughton South	-
Flintshire	W39000177	Brynford	No sig. Difference
Flintshire	W39000178	Buckley Bistre East	Sig. High
Flintshire	W39000179	Buckley Bistre West	No sig. Difference
Flintshire	W39000180	Buckley Mountain	No sig. Difference
Flintshire	W39000181	Buckley Pentrobin	No sig. Difference
Flintshire	W39000182	Caergwrle	-
Flintshire	W39000183	Caerwys	-
Flintshire	W39000184	Cilcain	-
Flintshire	W39000185	Connah's Quay Central	Sig. High
Flintshire	W39000186	Connah's Quay Golftyn	No sig. Difference
Flintshire	W39000187	Connah's Quay South	No sig. Difference
Flintshire	W39000188	Connah's Quay Wepre	No sig. Difference

Local Authority	Ward Code	Ward Name	Stat. Significance compared to Wales
Flintshire	W39000189	Ewloe	No sig. Difference
Flintshire	W39000190	Ffynnongroyw	No sig. Difference
Flintshire	W39000191	Flint Castle	Sig. High
Flintshire	W39000192	Flint Coleshill	No sig. Difference
Flintshire	W39000193	Flint Oakenholt	No sig. Difference
Flintshire	W39000194	Flint Trelawny	-
Flintshire	W39000195	Greenfield	No sig. Difference
Flintshire	W39000196	Gronant	-
Flintshire	W39000197	Gwernaffield	-
Flintshire	W39000198	Gwernymynydd	-
Flintshire	W39000199	Halkyn	-
Flintshire	W39000200	Hawarden	-
Flintshire	W39000201	Higher Kinnerton	-
Flintshire	W39000202	Holywell Central	No sig. Difference
Flintshire	W39000203	Holywell East	-
Flintshire	W39000204	Holywell West	Sig. High
Flintshire	W39000205	Hope	-
Flintshire	W39000206	Leeswood	-
Flintshire	W39000207	Llanfynydd	-
Flintshire	W39000208	Mancot	-
Flintshire	W39000209	Mold Broncoed	No sig. Difference
Flintshire	W39000210	Mold East	-
Flintshire	W39000211	Mold South	-
Flintshire	W39000212	Mold West	-
Flintshire	W39000213	Mostyn	-
Flintshire	W39000214	New Brighton	No sig. Difference
Flintshire	W39000215	Northop	-
Flintshire	W39000216	Northop Hall	-
Flintshire	W39000217	Penyffordd	-
Flintshire	W39000218	Queensferry	No sig. Difference
Flintshire	W39000219	Saltney Mold Junction	-
Flintshire	W39000220	Saltney Stonebridge	No sig. Difference
Flintshire	W39000221	Sealand	No sig. Difference
Flintshire	W39000222	Shotton East	-
Flintshire	W39000223	Shotton Higher	Sig. High
Flintshire	W39000224	Shotton West	-
Flintshire	W39000225	Trelawnyd and Gwaenysgor	-
Flintshire	W39000226	Treuddyn	-

Local Authority	Ward Code	Ward Name	Stat. Significance compared to Wales
Flintshire	W39000227	Whitford	-
Wrexham	W39000228	Acton	Sig. High
Wrexham	W39000229	Borras Park	-
Wrexham	W39000230	Bronington	-
Wrexham	W39000231	Brymbo	Sig. High
Wrexham	W39000232	Bryn Cefn	-
Wrexham	W39000233	Brynyffynnon	-
Wrexham	W39000234	Cartrefle	No sig. Difference
Wrexham	W39000235	Cefn	No sig. Difference
Wrexham	W39000236	Chirk North	-
Wrexham	W39000237	Chirk South	-
Wrexham	W39000238	Coedpoeth	No sig. Difference
Wrexham	W39000239	Dyffryn Ceiriog/Ceiriog Valley	-
Wrexham	W39000240	Erddig	-
Wrexham	W39000241	Esclusham	-
Wrexham	W39000242	Garden Village	-
Wrexham	W39000243	Gresford East and West	No sig. Difference
Wrexham	W39000244	Grosvenor	-
Wrexham	W39000245	Gwenfro	-
Wrexham	W39000246	Gwersyllt East and South	No sig. Difference
Wrexham	W39000247	Gwersyllt North	No sig. Difference
Wrexham	W39000248	Gwersyllt West	No sig. Difference
Wrexham	W39000249	Hermitage	-
Wrexham	W39000250	Holt	-
Wrexham	W39000251	Johnstown	No sig. Difference
Wrexham	W39000252	Little Acton	-
Wrexham	W39000253	Llangollen Rural	-
Wrexham	W39000254	Llay	No sig. Difference
Wrexham	W39000255	Maesydre	-
Wrexham	W39000256	Marchwiell	No sig. Difference
Wrexham	W39000257	Marford and Hoseley	-
Wrexham	W39000258	Minera	-
Wrexham	W39000259	New Broughton	Sig. High
Wrexham	W39000260	Offa	-
Wrexham	W39000261	Overton	-
Wrexham	W39000262	Pant	-
Wrexham	W39000263	Penycae	No sig. Difference

Local Authority	Ward Code	Ward Name	Stat. Significance compared to Wales
Wrexham	W39000264	Penycae and Ruabon South	-
Wrexham	W39000265	Plas Madoc	Sig. High
Wrexham	W39000266	Ponciau	No sig. Difference
Wrexham	W39000267	Queensway	Sig. High
Wrexham	W39000269	Rossett	-
Wrexham	W39000270	Ruabon	No sig. Difference
Wrexham	W39000271	Smithfield	-
Wrexham	W39000272	Stansty	-
Wrexham	W39000273	Whitegate	Sig. High
Wrexham	W39000274	Wynnstay	No sig. Difference

Produced by Public Health Wales Observatory, conception data and MYE (ONS)

* numbers and rates subject to strict disclosure control; statistical significance of rates per 1,000 females (aged 15 - 17)

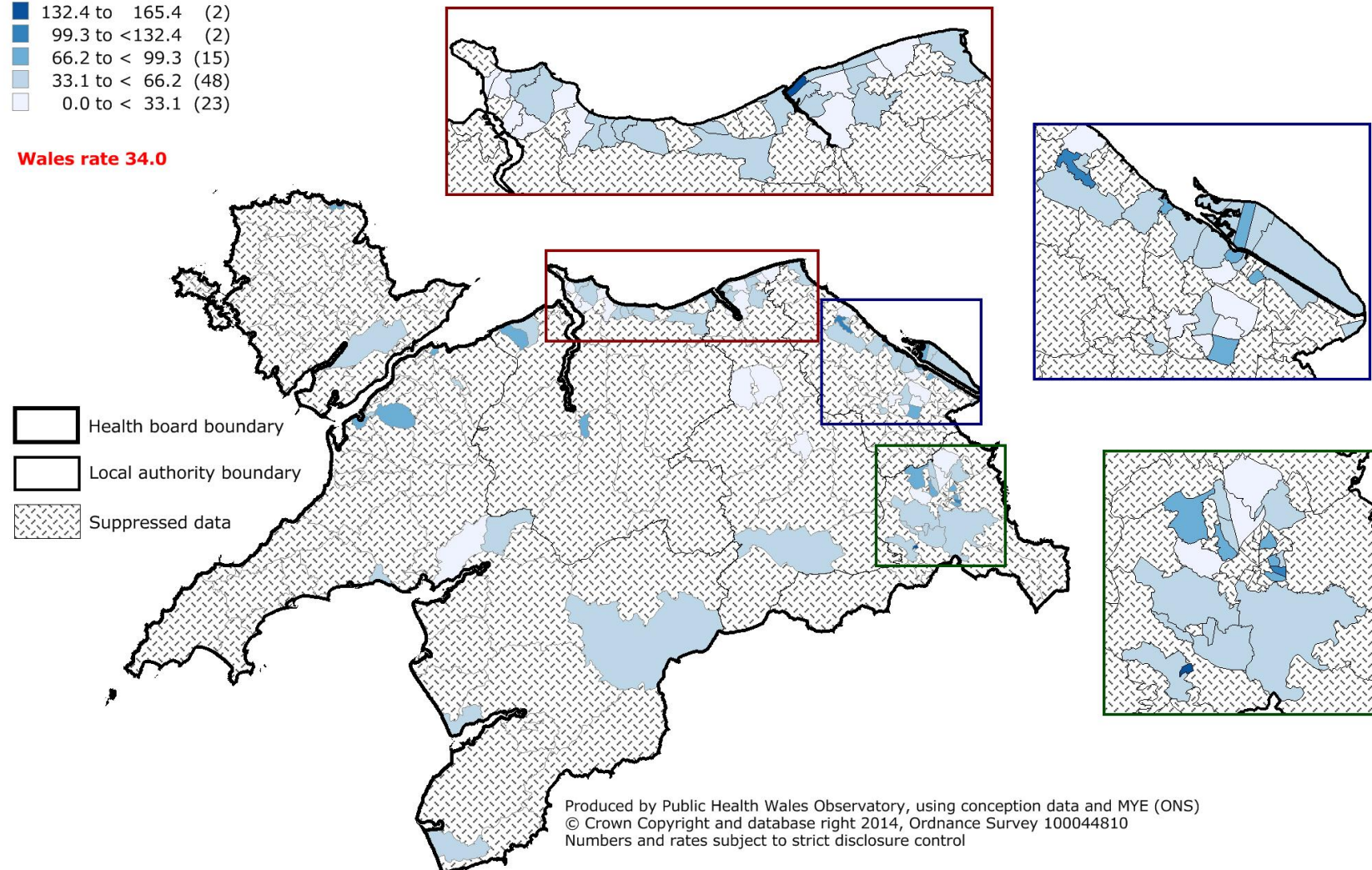
'-' Suppressed data

Conceptions in females aged under 18, Betsi Cadwaladr UHB, 2010 - 12

Wards, rate per 1,000 females aged 15 - 17 years

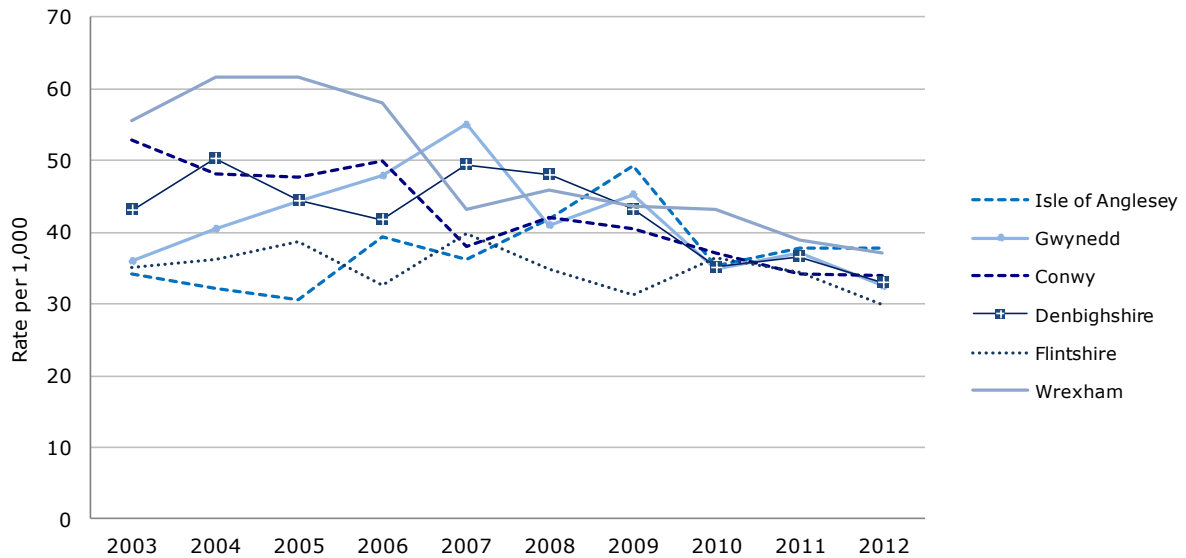
- 132.4 to 165.4 (2)
- 99.3 to <132.4 (2)
- 66.2 to < 99.3 (15)
- 33.1 to < 66.2 (48)
- 0.0 to < 33.1 (23)

Wales rate 34.0



Conception rate per 1,000 females aged under 18*, local authorities within Betsi Cadwaladr UHB, 2003 - 12

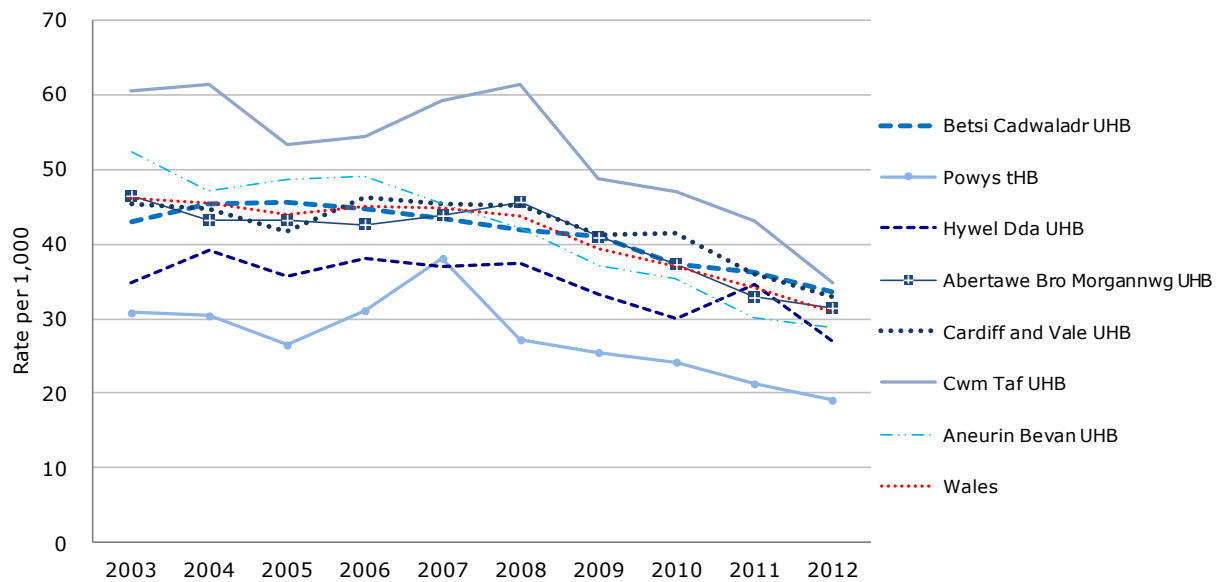
Produced by Public Health Wales Observatory, using conception data and MYE (ONS)



* Rate per 1,000 females aged 15 - 17

Conception rate per 1,000 females aged under 18*, health boards within Wales, 2003 - 12

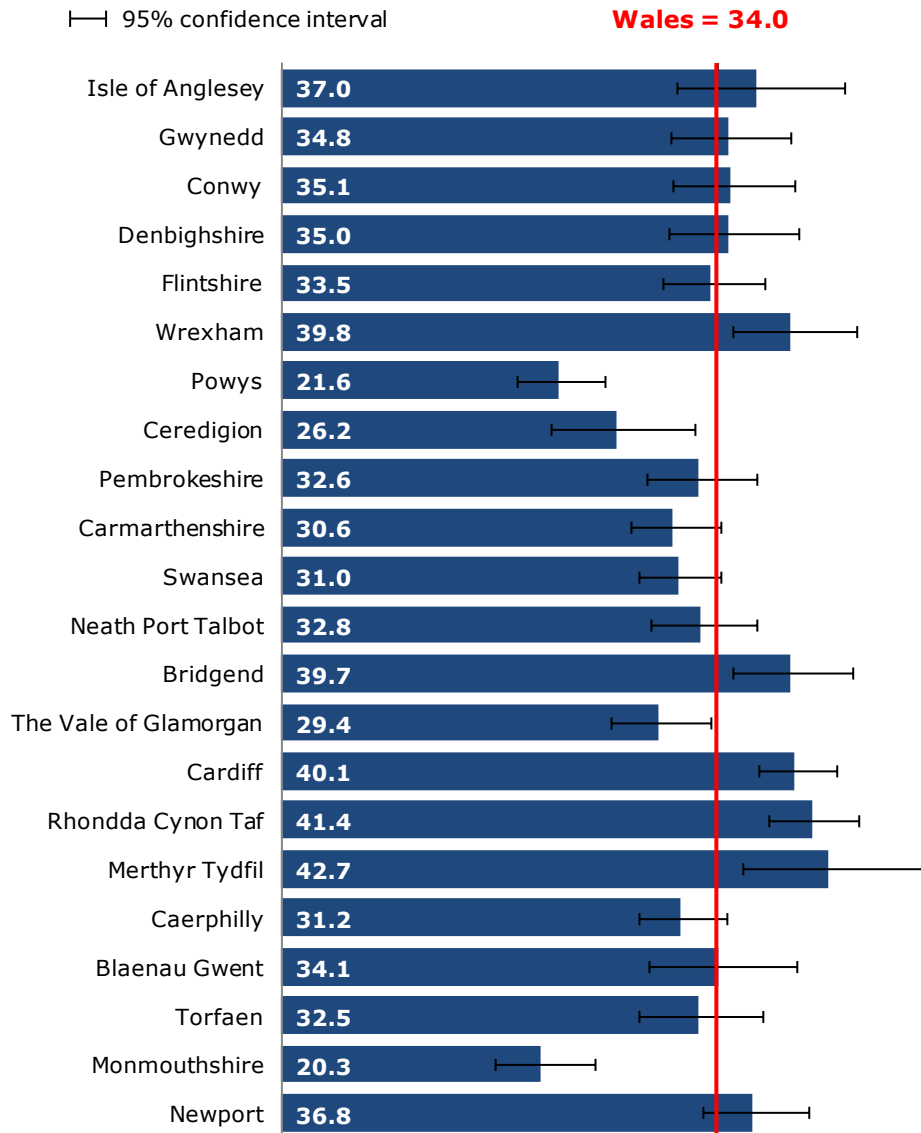
Produced by Public Health Wales Observatory, using conception data and MYE (ONS)



* Rate per 1,000 females aged 15 - 17

Conception rate per 1,000 females aged under 18*, Wales local authorities, 2010- 12

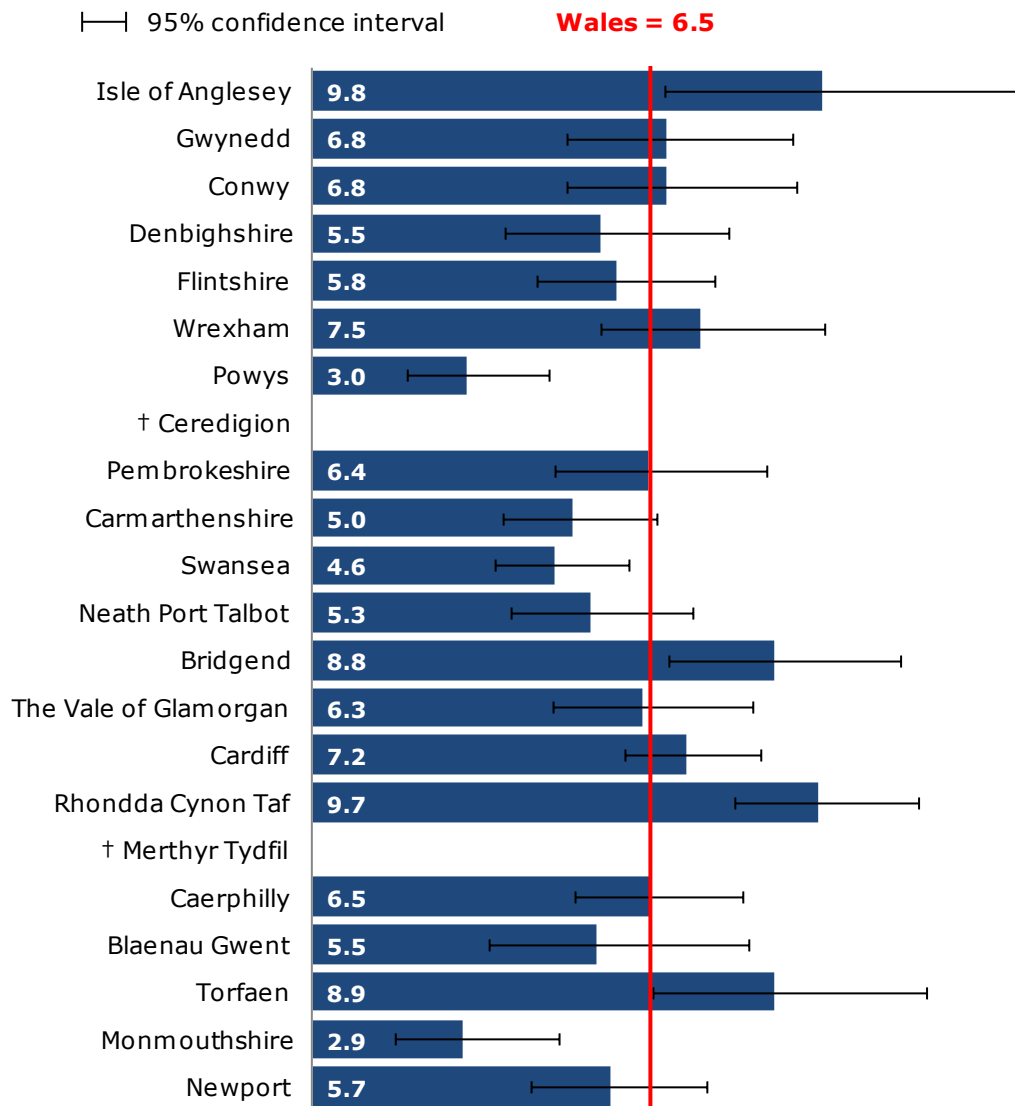
Produced by Public Health Wales Observatory, using conceptions data and MYE (ONS)



* Rate per 1,000 females aged 15 - 17

Conception rate per 1,000, females aged under 16*, Wales local authorities, 2010-12

Produced by Public Health Wales Observatory, using conceptions data and MYE (ONS)

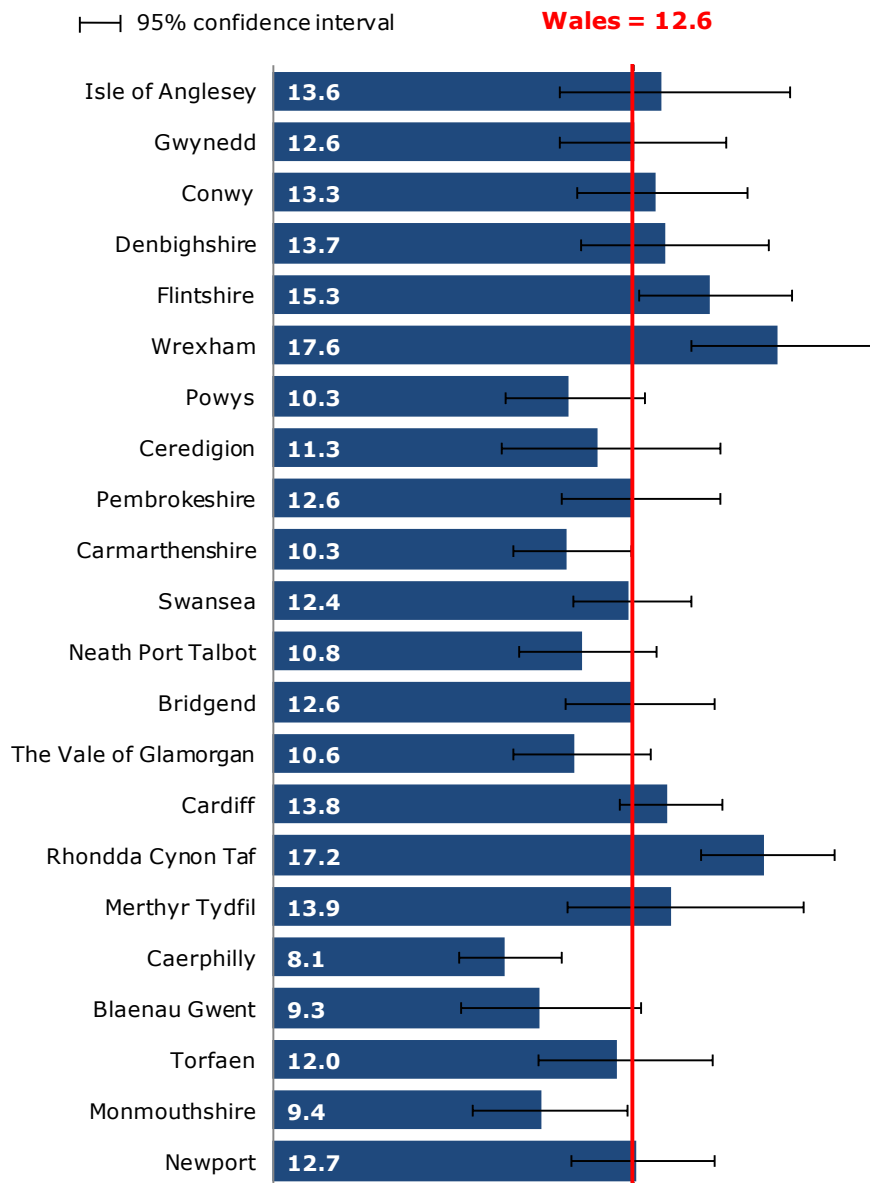


* Rate per 1,000 females aged 13 - 15

† ONS has suppressed data where the number of conceptions was less than five

Abortion rate per 1,000 females aged under 18*, Wales local authorities, 2011-13

Produced by Public Health Wales Observatory, using abortions data and MYE (ONS)



* Rate per 1,000 females aged 15 - 17