



**GIG**  
CYMRU  
**NHS**  
WALES

Arsyllfa Iechyd  
Cyhoeddus Cymru  
Public Health  
Wales Observatory

# Ward-level teenage conceptions in Aneurin Bevan UHB, 2010-12

**Author:** Andrew Dring, Rhys Gibbon, Rhys Powell

**Date:** 11 December 2014

**Version:** 2a

**Publication/ Distribution:** Internal

## **Purpose and Summary of Document:**

This document shows information on teenage conceptions amongst females aged under 16 and 18 for the years 2010-12. It also contains ward level (also known as electoral divisions) conception rates grouped into ranges from highest to lowest shown on a map, and a table showing statistical significance compared to Wales. In addition, teenage abortions amongst female aged under 18 for the years 2011-13 are presented at local authority level. These three pieces of information should be combined to interpret the data and potentially identify areas of particular concern.

## **Notes:**

These data need to be interpreted with extreme caution due to small numbers and population sizes, and variation in population between wards (electoral divisions). The ONS have suppressed data where counts were fewer than five in the three-year period available.

Ward rates and numbers of conceptions are subject to strict conditions of supply by ONS and cannot be shared outside of Public Health Wales or reproduced in documents/via the internet. The information in this document has specifically been prepared in a format that can be shared with external partners.

**Conceptions in females aged under 18\*, wards in Aneurin Bevan UHB, 2010-12**

<b>Local Authority</b>	<b>Ward Code</b>	<b>Ward Name</b>	<b>Stat. Significance compared to Wales</b>
Caerphilly	W39000652	Aber Valley	No sig. Difference
Caerphilly	W39000653	Aberbargoed	No sig. Difference
Caerphilly	W39000654	Abercarn	No sig. Difference
Caerphilly	W39000655	Argoed	No sig. Difference
Caerphilly	W39000656	Bargoed	No sig. Difference
Caerphilly	W39000657	Bedwas  Trethomas and Machen	No sig. Difference
Caerphilly	W39000658	Blackwood	Sig. Low
Caerphilly	W39000659	Cefn Fforest	-
Caerphilly	W39000660	Crosskeys	No sig. Difference
Caerphilly	W39000661	Crumlin	No sig. Difference
Caerphilly	W39000662	Darren Valley	-
Caerphilly	W39000663	Gilfach	-
Caerphilly	W39000664	Hengoed	No sig. Difference
Caerphilly	W39000665	Llanbradach	-
Caerphilly	W39000666	Maesycwmmmer	-
Caerphilly	W39000667	Morgan Jones	No sig. Difference
Caerphilly	W39000668	Moriah	No sig. Difference
Caerphilly	W39000669	Nelson	No sig. Difference
Caerphilly	W39000670	New Tredegar	No sig. Difference
Caerphilly	W39000671	Newbridge	No sig. Difference
Caerphilly	W39000672	Pengam	No sig. Difference
Caerphilly	W39000673	Penmaen	-
Caerphilly	W39000674	Penyrheol	No sig. Difference
Caerphilly	W39000675	Pontllanfraith	Sig. Low
Caerphilly	W39000676	Pontlottyn	-
Caerphilly	W39000677	Risca East	No sig. Difference
Caerphilly	W39000678	Risca West	No sig. Difference
Caerphilly	W39000679	St. Cattwg	No sig. Difference
Caerphilly	W39000680	St. James	Sig. High
Caerphilly	W39000681	St. Martins	Sig. Low
Caerphilly	W39000682	Twyn Carno	No sig. Difference
Caerphilly	W39000683	Ynysddu	No sig. Difference
Caerphilly	W39000684	Ystrad Mynach	No sig. Difference
Blaenau Gwent	W39000685	Abertillery	No sig. Difference
Blaenau Gwent	W39000686	Badminton	-

<b>Local Authority</b>	<b>Ward Code</b>	<b>Ward Name</b>	<b>Stat. Significance compared to Wales</b>
Blaenau Gwent	W39000687	Beaufort	No sig. Difference
Blaenau Gwent	W39000688	Blaina	No sig. Difference
Blaenau Gwent	W39000689	Brynmawr	No sig. Difference
Blaenau Gwent	W39000690	Cwm	-
Blaenau Gwent	W39000691	Cwmtillery	No sig. Difference
Blaenau Gwent	W39000692	Ebbw Vale North	No sig. Difference
Blaenau Gwent	W39000693	Ebbw Vale South	No sig. Difference
Blaenau Gwent	W39000694	Georgetown	No sig. Difference
Blaenau Gwent	W39000695	Llanhilleth	No sig. Difference
Blaenau Gwent	W39000696	Nantyglo	No sig. Difference
Blaenau Gwent	W39000697	Rassau	No sig. Difference
Blaenau Gwent	W39000698	Sirhowy	No sig. Difference
Blaenau Gwent	W39000699	Six Bells	No sig. Difference
Blaenau Gwent	W39000700	Tredegar Central and West	No sig. Difference
Torfaen	W39000701	Abersychan	No sig. Difference
Torfaen	W39000702	Blaenavon	No sig. Difference
Torfaen	W39000703	Brynwern	-
Torfaen	W39000704	Coed Eva	-
Torfaen	W39000705	Croesyceiliog North	No sig. Difference
Torfaen	W39000706	Croesyceiliog South	-
Torfaen	W39000707	Cwmyniscoy	-
Torfaen	W39000708	Fairwater	No sig. Difference
Torfaen	W39000709	Greenmeadow	No sig. Difference
Torfaen	W39000710	Llantarnam	No sig. Difference
Torfaen	W39000711	Llanyrafon North	-
Torfaen	W39000712	Llanyrafon South	No sig. Difference
Torfaen	W39000713	New Inn	-
Torfaen	W39000714	Panteg	No sig. Difference
Torfaen	W39000715	Pontnewydd	No sig. Difference
Torfaen	W39000716	Pontnewynydd	-
Torfaen	W39000717	Pontypool	No sig. Difference
Torfaen	W39000718	Snatchwood	No sig. Difference
Torfaen	W39000719	St. Cadocs and Penygarn	No sig. Difference
Torfaen	W39000720	St. Dials	No sig. Difference
Torfaen	W39000721	Trevethin	Sig. High
Torfaen	W39000722	Two Locks	No sig. Difference

<b>Local Authority</b>	<b>Ward Code</b>	<b>Ward Name</b>	<b>Stat. Significance compared to Wales</b>
Torfaen	W39000723	Upper Cwmbbran	No sig. Difference
Torfaen	W39000724	Wainfelin	-
Monmouthshire	W39000725	Caerwent	-
Monmouthshire	W39000726	Caldicot Castle	No sig. Difference
Monmouthshire	W39000727	Cantref	-
Monmouthshire	W39000728	Castle	-
Monmouthshire	W39000729	Croesonen	No sig. Difference
Monmouthshire	W39000730	Crucorney	-
Monmouthshire	W39000731	Devauden	-
Monmouthshire	W39000732	Dewstow	-
Monmouthshire	W39000733	Dixton with Osbaston	-
Monmouthshire	W39000734	Drybridge	No sig. Difference
Monmouthshire	W39000735	Goetre Fawr	-
Monmouthshire	W39000736	Green Lane	-
Monmouthshire	W39000737	Grofield	-
Monmouthshire	W39000738	Lansdown	-
Monmouthshire	W39000739	Larkfield	No sig. Difference
Monmouthshire	W39000740	Llanbadoc	-
Monmouthshire	W39000741	Llanelly Hill	-
Monmouthshire	W39000742	Llanfoist Fawr	-
Monmouthshire	W39000743	Llangybi Fawr	-
Monmouthshire	W39000744	Llanover	-
Monmouthshire	W39000745	Llantilio Crossenny	-
Monmouthshire	W39000746	Llanwenarth Ultra	-
Monmouthshire	W39000747	Mardy	-
Monmouthshire	W39000748	Mill	-
Monmouthshire	W39000749	Mitchel Troy	-
Monmouthshire	W39000750	Overmonnow	No sig. Difference
Monmouthshire	W39000751	Portskewett	-
Monmouthshire	W39000752	Priory	-
Monmouthshire	W39000753	Raglan	-
Monmouthshire	W39000754	Rogiet	-
Monmouthshire	W39000755	Severn	-
Monmouthshire	W39000756	Shirenewton	-
Monmouthshire	W39000757	St. Arvans	-
Monmouthshire	W39000758	St. Christopher's	No sig. Difference

<b>Local Authority</b>	<b>Ward Code</b>	<b>Ward Name</b>	<b>Stat. Significance compared to Wales</b>
Monmouthshire	W39000759	St. Kingsmark	-
Monmouthshire	W39000760	St. Mary's	-
Monmouthshire	W39000761	The Elms	-
Monmouthshire	W39000762	Thornwell	-
Monmouthshire	W39000763	Trellech United	-
Monmouthshire	W39000764	Usk	-
Monmouthshire	W39000765	West End	-
Monmouthshire	W39000766	Wyesham	-
Newport	W39000767	Allt-yr-yn	No sig. Difference
Newport	W39000768	Alway	No sig. Difference
Newport	W39000769	Beechwood	No sig. Difference
Newport	W39000770	Bettws	No sig. Difference
Newport	W39000771	Caerleon	No sig. Difference
Newport	W39000772	Gaer	No sig. Difference
Newport	W39000773	Graig	No sig. Difference
Newport	W39000774	Langstone	-
Newport	W39000775	Liswerry	No sig. Difference
Newport	W39000776	Llanwern	No sig. Difference
Newport	W39000777	Malpas	No sig. Difference
Newport	W39000778	Marshfield	No sig. Difference
Newport	W39000779	Pillgwenlly	No sig. Difference
Newport	W39000780	Ringland	No sig. Difference
Newport	W39000781	Rogerstone	Sig. Low
Newport	W39000782	Shaftesbury	-
Newport	W39000783	St. Julians	No sig. Difference
Newport	W39000784	Stow Hill	No sig. Difference
Newport	W39000785	Tredegpar Park	No sig. Difference
Newport	W39000786	Victoria	No sig. Difference

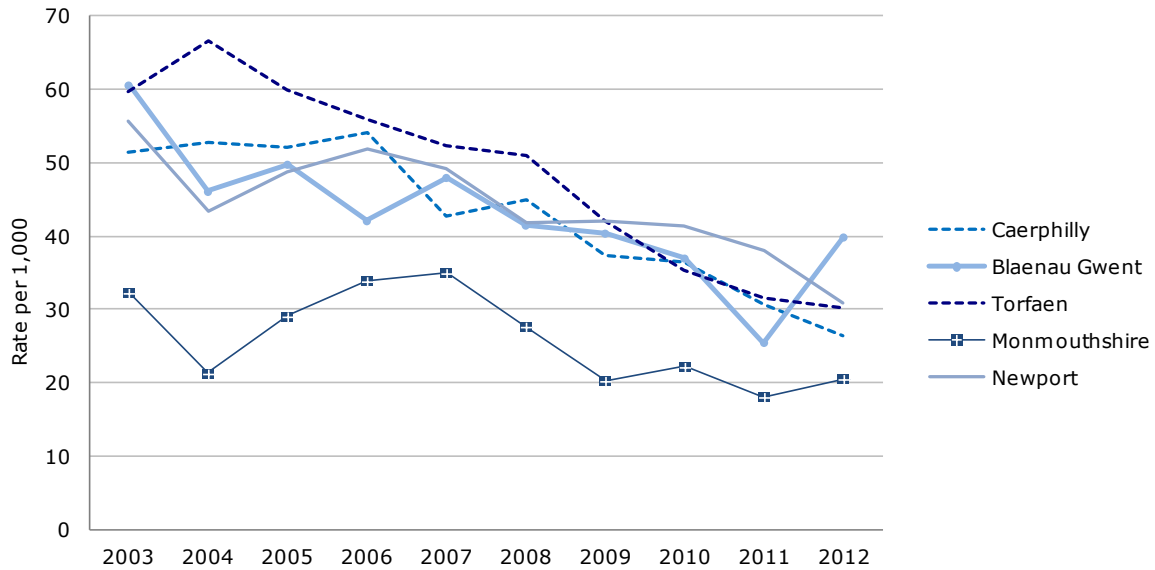
Produced by Public Health Wales Observatory, conception data and MYE (ONS)

\* numbers and rates subject to strict disclosure control; statistical significance of rates per 1,000 females (aged 15 - 17)

'-' Suppressed data

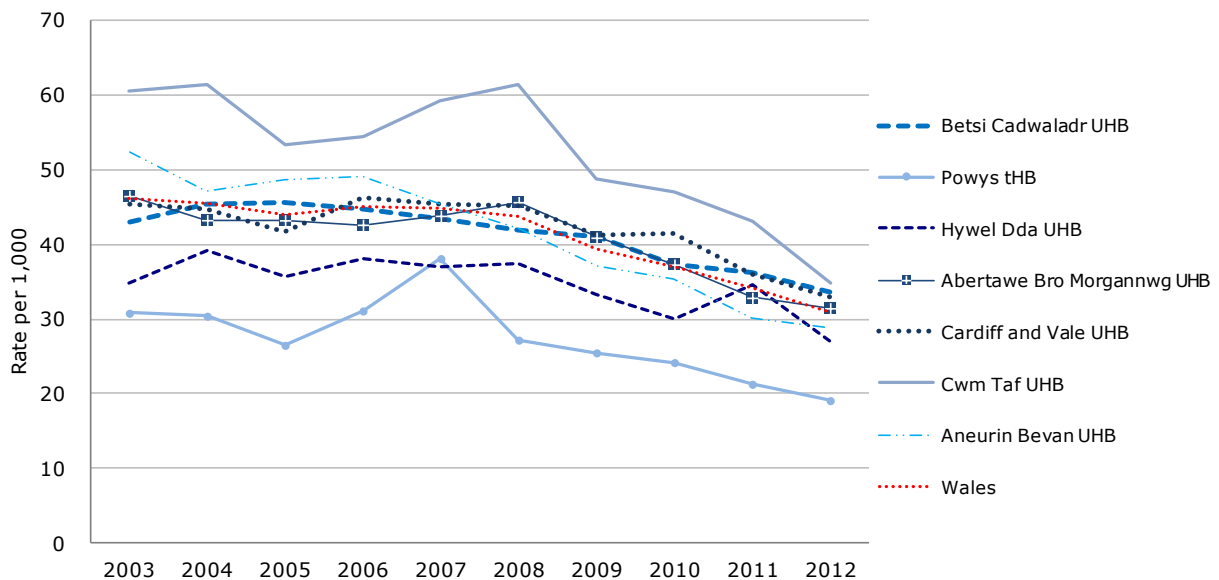


**Conception rate per 1,000 females aged under 18\*, local authorities within Aneurin Bevan UHB, 2003 - 12**  
 Produced by Public Health Wales Observatory, using conception data and MYE (ONS)



\* Rate per 1,000 females aged 15 - 17

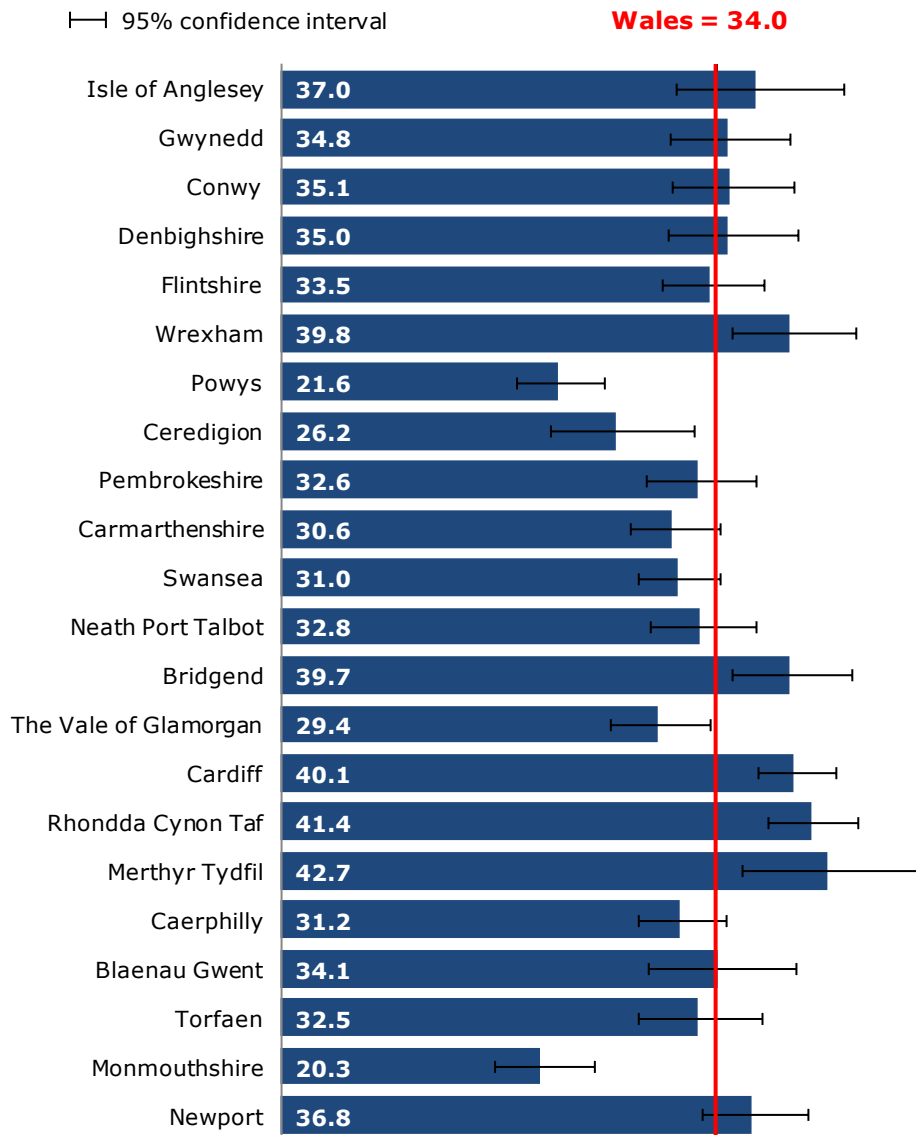
**Conception rate per 1,000 females aged under 18\*, health boards within Wales, 2003 - 12**  
 Produced by Public Health Wales Observatory, using conception data and MYE (ONS)



\* Rate per 1,000 females aged 15 - 17

**Conception rate per 1,000 females aged under 18\*, Wales local authorities, 2010- 12**

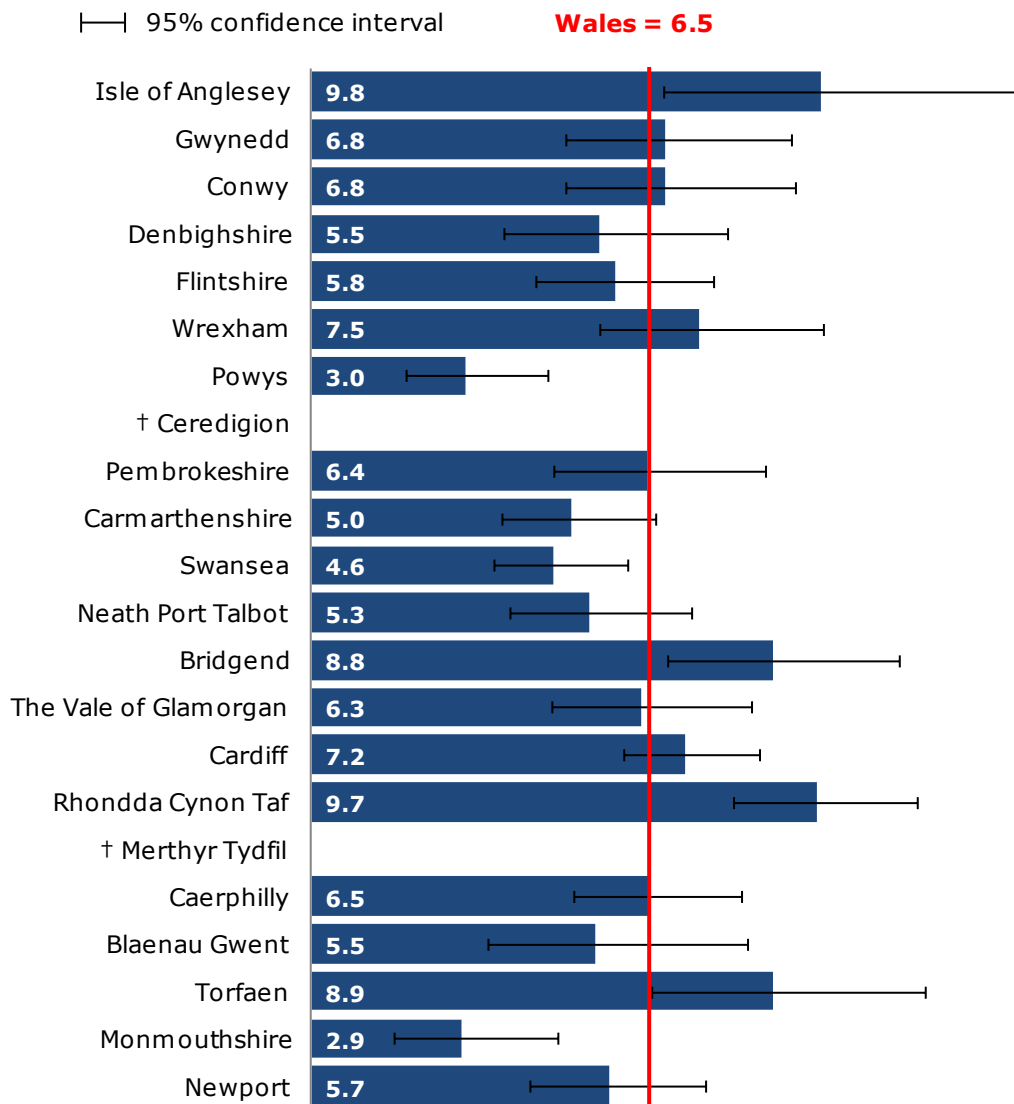
Produced by Public Health Wales Observatory, using conceptions data and MYE (ONS)



\* Rate per 1,000 females aged 15 - 17

**Conception rate per 1,000, females aged under 16\*, Wales local authorities, 2010-12**

Produced by Public Health Wales Observatory, using conceptions data and MYE (ONS)

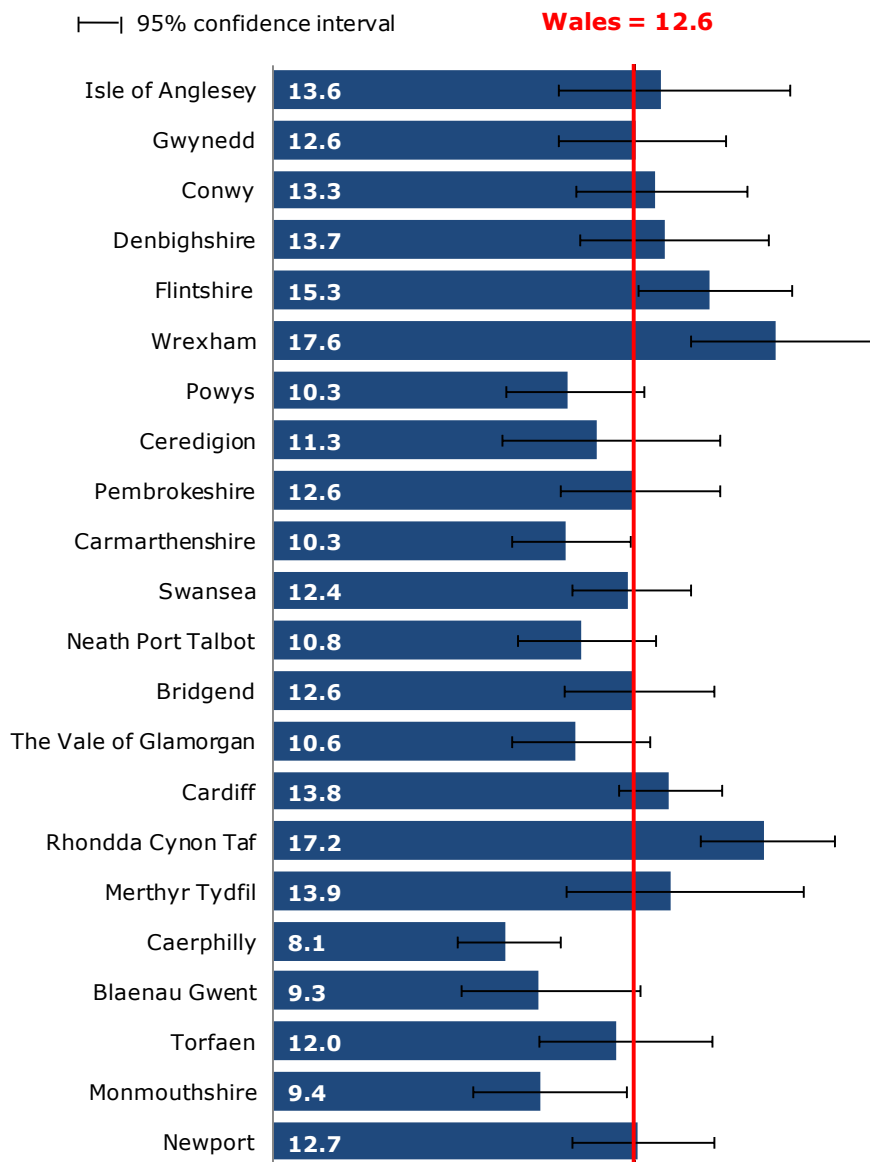


\* Rate per 1,000 females aged 13 - 15

† ONS has suppressed data where the number of conceptions was less than five

**Abortion rate per 1,000 females aged under 18\*, Wales local authorities, 2011-13**

Produced by Public Health Wales Observatory, using abortions data and MYE (ONS)



\* Rate per 1,000 females aged 15 - 17