



GIG  
CYMRU  
NHS  
WALES

Arsyllfa Iechyd  
Cyhoeddus Cymru  
Public Health  
Wales Observatory

# Ward-level teenage conceptions in Abertawe Bro Morgannwg UHB, 2010-12

**Author:** Andrew Dring, Rhys Gibbon, Rhys Powell

**Date:** 11 December 2014

**Version:** 2a

**Publication/ Distribution:** Internal

## **Purpose and Summary of Document:**

This document shows information on teenage conceptions amongst females aged under 16 and 18 for the years 2010-12. It also contains ward level (also known as electoral divisions) conception rates grouped into ranges from highest to lowest shown on a map, and a table showing statistical significance compared to Wales. In addition, teenage abortions amongst female aged under 18 for the years 2011-13 are presented at local authority level. These three pieces of information should be combined to interpret the data and potentially identify areas of particular concern.

## **Notes:**

These data need to be interpreted with extreme caution due to small numbers and population sizes, and variation in population between wards (electoral divisions). The ONS have suppressed data where counts were fewer than five in the three-year period available.

Ward rates and numbers of conceptions are subject to strict conditions of supply by ONS and cannot be shared outside of Public Health Wales or reproduced in documents/via the internet. The information in this document has specifically been prepared in a format that can be shared with external partners.

**Conceptions in females aged under 18\*, wards in Abertawe Bro Morgannwg UHB, 2010-12**

<b>Local Authority</b>	<b>Ward Code</b>	<b>Ward Name</b>	<b>Stat. Significance compared to Wales</b>
Swansea	W39000432	Bishopston	-
Swansea	W39000433	Bonymaen	No sig. Difference
Swansea	W39000434	Castle	No sig. Difference
Swansea	W39000435	Clydach	No sig. Difference
Swansea	W39000436	Cockett	No sig. Difference
Swansea	W39000437	Cwmbwrla	No sig. Difference
Swansea	W39000438	Dunvant	-
Swansea	W39000439	Fairwood	-
Swansea	W39000440	Gorseinon	No sig. Difference
Swansea	W39000441	Gower	-
Swansea	W39000442	Gowerton	No sig. Difference
Swansea	W39000443	Killay North	-
Swansea	W39000444	Killay South	-
Swansea	W39000445	Kingsbridge	-
Swansea	W39000446	Landore	No sig. Difference
Swansea	W39000447	Llangyfelach	-
Swansea	W39000448	Llansamlet	No sig. Difference
Swansea	W39000449	Lower Loughor	No sig. Difference
Swansea	W39000450	Mawr	-
Swansea	W39000451	Mayals	-
Swansea	W39000452	Morrison	No sig. Difference
Swansea	W39000453	Mynyddbach	No sig. Difference
Swansea	W39000454	Newton	No sig. Difference
Swansea	W39000455	Oystermouth	-
Swansea	W39000456	Penclawdd	-
Swansea	W39000457	Penderry	Sig. High
Swansea	W39000458	Penllergaer	-
Swansea	W39000459	Pennard	-
Swansea	W39000460	Penyrheol	No sig. Difference
Swansea	W39000461	Pontardulais	-
Swansea	W39000462	Sketty	Sig. Low
Swansea	W39000463	St. Thomas	No sig. Difference
Swansea	W39000464	Townhill	Sig. High
Swansea	W39000465	Uplands	-
Swansea	W39000466	Upper Loughor	-
Swansea	W39000467	West Cross	No sig. Difference

<b>Local Authority</b>	<b>Ward Code</b>	<b>Ward Name</b>	<b>Stat. Significance compared to Wales</b>
Neath Port Talbot	W39000468	Aberavon	No sig. Difference
Neath Port Talbot	W39000469	Aberdulais	No sig. Difference
Neath Port Talbot	W39000470	Allt-wen	-
Neath Port Talbot	W39000471	Baglan	No sig. Difference
Neath Port Talbot	W39000472	Blaengwrach	-
Neath Port Talbot	W39000473	Briton Ferry East	No sig. Difference
Neath Port Talbot	W39000474	Briton Ferry West	No sig. Difference
Neath Port Talbot	W39000475	Bryn and Cwmavon	No sig. Difference
Neath Port Talbot	W39000476	Bryn-coch North	-
Neath Port Talbot	W39000477	Bryn-coch South	No sig. Difference
Neath Port Talbot	W39000478	Cadoxton	-
Neath Port Talbot	W39000479	Cimla	-
Neath Port Talbot	W39000480	Coedffranc Central	-
Neath Port Talbot	W39000481	Coedffranc North	No sig. Difference
Neath Port Talbot	W39000482	Coedffranc West	-
Neath Port Talbot	W39000483	Crynant	-
Neath Port Talbot	W39000484	Cwmllynfell	-
Neath Port Talbot	W39000485	Cymmer	Sig. High
Neath Port Talbot	W39000486	Dyffryn	No sig. Difference
Neath Port Talbot	W39000487	Glyncorwg	-
Neath Port Talbot	W39000488	Glynneath	-
Neath Port Talbot	W39000489	Godre'r graig	-
Neath Port Talbot	W39000490	Gwaun-Cae-Gurwen	No sig. Difference
Neath Port Talbot	W39000491	Gwynfi	-
Neath Port Talbot	W39000492	Lower Brynamman	-
Neath Port Talbot	W39000493	Margam	-
Neath Port Talbot	W39000494	Neath East	No sig. Difference
Neath Port Talbot	W39000495	Neath North	No sig. Difference
Neath Port Talbot	W39000496	Neath South	No sig. Difference
Neath Port Talbot	W39000497	Onllwyn	-
Neath Port Talbot	W39000498	Pelenna	-
Neath Port Talbot	W39000499	Pontardawe	No sig. Difference
Neath Port Talbot	W39000500	Port Talbot	No sig. Difference
Neath Port Talbot	W39000501	Resolven	-
Neath Port Talbot	W39000502	Rhos	-
Neath Port Talbot	W39000503	Sandfields East	No sig. Difference
Neath Port Talbot	W39000504	Sandfields West	Sig. High
Neath Port Talbot	W39000505	Seven Sisters	-
Neath Port Talbot	W39000506	Tai-bach	No sig. Difference

<b>Local Authority</b>	<b>Ward Code</b>	<b>Ward Name</b>	<b>Stat. Significance compared to Wales</b>
Neath Port Talbot	W39000507	Tonna	No sig. Difference
Neath Port Talbot	W39000508	Trebanos	-
Neath Port Talbot	W39000509	Ystalyfera	No sig. Difference
Bridgend	W39000510	Aberkenfig	-
Bridgend	W39000511	Bettws	No sig. Difference
Bridgend	W39000512	Blackmill	No sig. Difference
Bridgend	W39000513	Blaengarw	No sig. Difference
Bridgend	W39000514	Brackla Coity	No sig. Difference
Bridgend	W39000515	Bryncethin	-
Bridgend	W39000516	Bryncoch	-
Bridgend	W39000517	Bryntirion Laleston and Merthyr Mawr	No sig. Difference
Bridgend	W39000518	Caerau	Sig. High
Bridgend	W39000519	Cefn Cribwr	-
Bridgend	W39000520	Cefn Glas	-
Bridgend	W39000521	Cornelly	No sig. Difference
Bridgend	W39000522	Coychurch Lower	-
Bridgend	W39000523	Felindre	No sig. Difference
Bridgend	W39000524	Hendre	No sig. Difference
Bridgend	W39000525	Litchard	-
Bridgend	W39000526	Llangeinor	-
Bridgend	W39000527	Llangewydd and Brynhyfryd	No sig. Difference
Bridgend	W39000528	Llangynwyd	No sig. Difference
Bridgend	W39000529	Maesteg East	No sig. Difference
Bridgend	W39000530	Maesteg West	No sig. Difference
Bridgend	W39000531	Morfa	Sig. High
Bridgend	W39000532	Nant-y-moel	No sig. Difference
Bridgend	W39000533	Newcastle	No sig. Difference
Bridgend	W39000534	Newton	-
Bridgend	W39000535	Nottage	-
Bridgend	W39000536	Ogmore Vale	No sig. Difference
Bridgend	W39000537	Oldcastle	No sig. Difference
Bridgend	W39000538	Pendre	No sig. Difference
Bridgend	W39000539	Penprysg	No sig. Difference
Bridgend	W39000540	Pen-y-fai	-
Bridgend	W39000541	Pontcymmer	No sig. Difference
Bridgend	W39000542	Porthcawl East Central	-
Bridgend	W39000543	Porthcawl West Central	No sig. Difference
Bridgend	W39000544	Pyle	No sig. Difference

<b>Local Authority</b>	<b>Ward Code</b>	<b>Ward Name</b>	<b>Stat. Significance compared to Wales</b>
Bridgend	W39000545	Rest Bay	-
Bridgend	W39000546	Sarn	No sig. Difference
Bridgend	W39000547	Ynysawdre	Sig. High

---

Produced by Public Health Wales Observatory, conception data and MYE (ONS)

\* numbers and rates subject to strict disclosure control; statistical significance of rates per 1,000 females (aged 15 - 17)

'-' Suppressed data

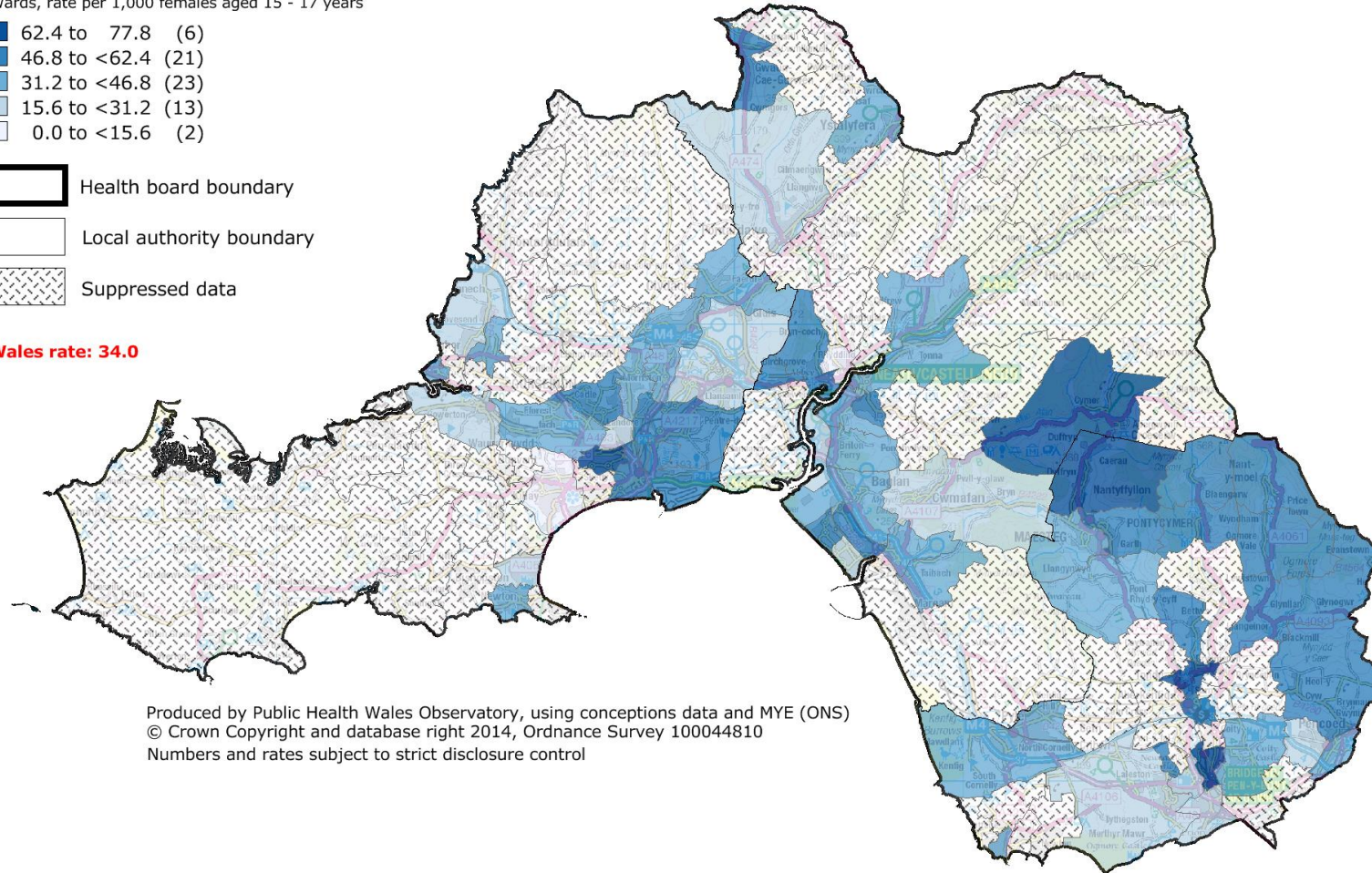
**Conceptions in females aged under 18\*, Abertawe Bro Morgannwg UHB, 2010 - 12**

Wards, rate per 1,000 females aged 15 - 17 years

- 62.4 to 77.8 (6)
- 46.8 to <62.4 (21)
- 31.2 to <46.8 (23)
- 15.6 to <31.2 (13)
- 0.0 to <15.6 (2)

- ▭ Health board boundary
- ▭ Local authority boundary
- ▨ Suppressed data

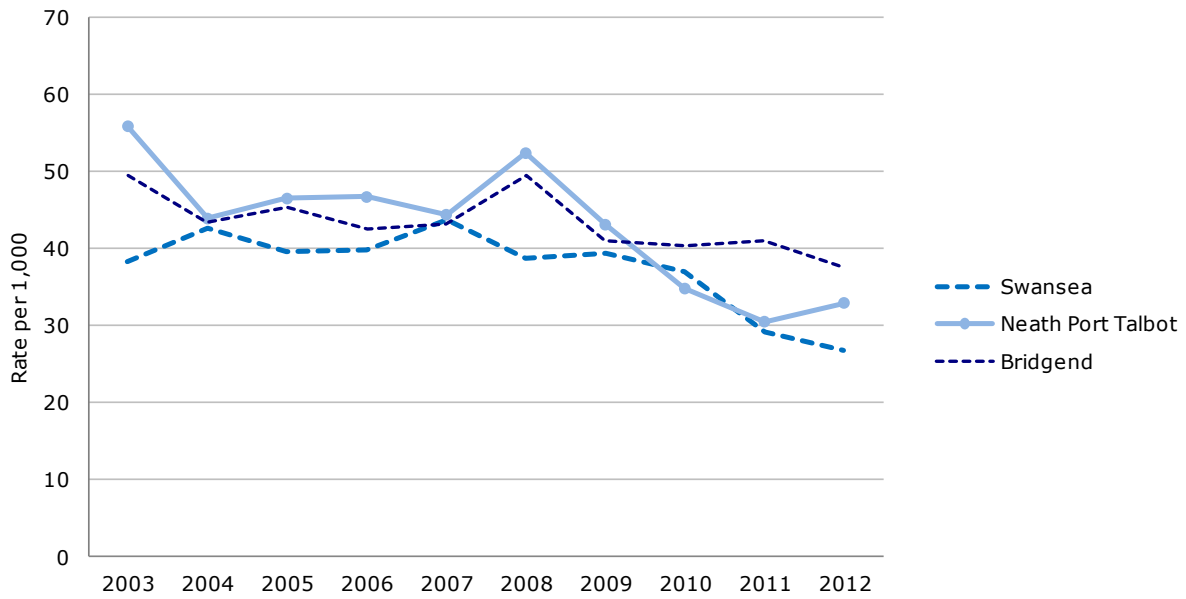
**Wales rate: 34.0**



Produced by Public Health Wales Observatory, using conceptions data and MYE (ONS)  
 © Crown Copyright and database right 2014, Ordnance Survey 100044810  
 Numbers and rates subject to strict disclosure control

**Conception rate per 1,000 females aged under 18\*, Abertawe Bro Morgannwg UHB, 2003 - 12**

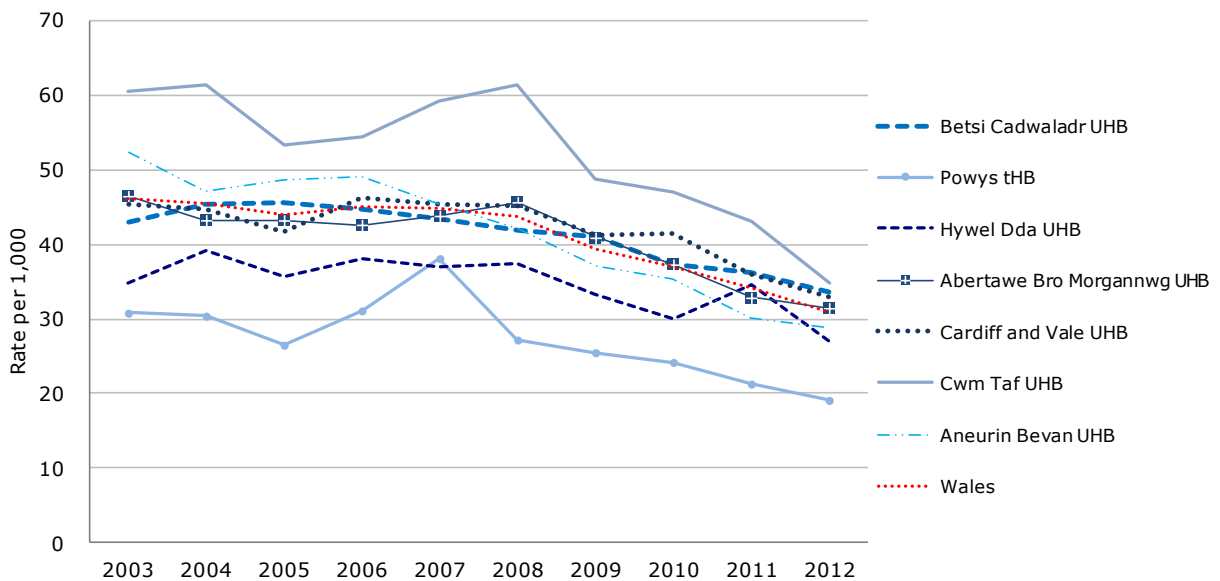
Produced by Public Health Wales Observatory, using conception data and MYE (ONS)



\* Rate per 1,000 females aged 15 - 17

**Conception rate per 1,000 females aged under 18\*, health boards within Wales, 2003 - 12**

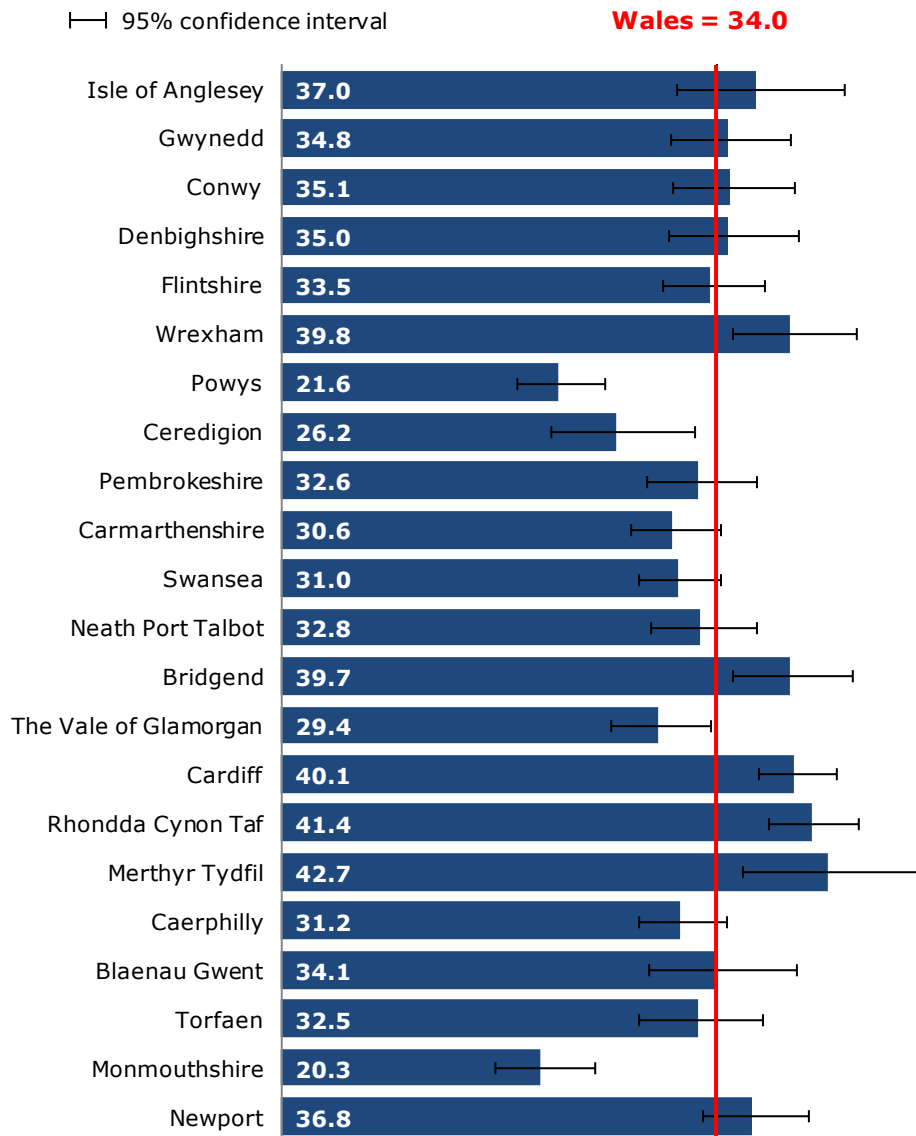
Produced by Public Health Wales Observatory, using conception data and MYE (ONS)



\* Rate per 1,000 females aged 15 - 17

**Conception rate per 1,000 females aged under 18\*, Wales local authorities, 2010- 12**

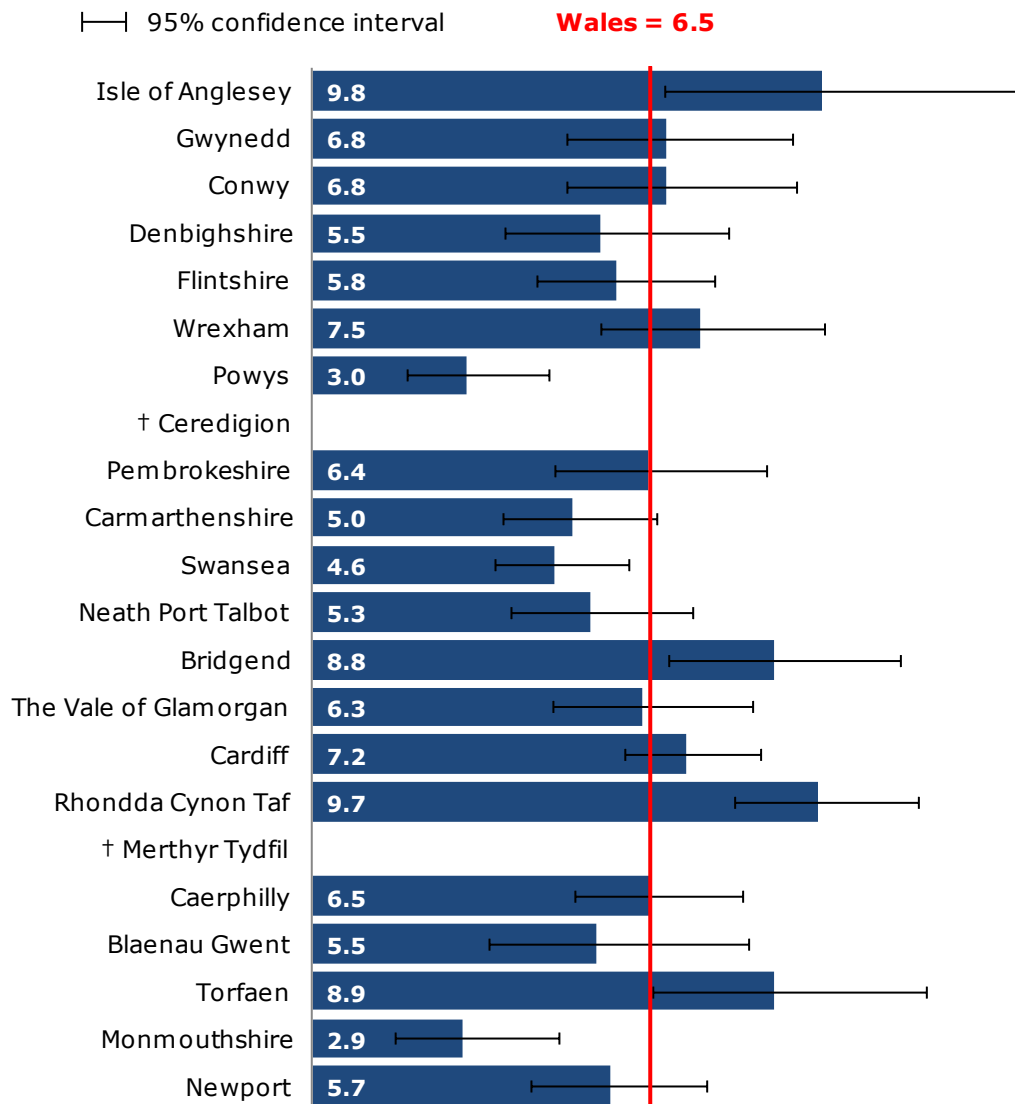
Produced by Public Health Wales Observatory, using conceptions data and MYE (ONS)



\* Rate per 1,000 females aged 15 - 17

**Conception rate per 1,000, females aged under 16\*, Wales local authorities, 2010-12**

Produced by Public Health Wales Observatory, using conceptions data and MYE (ONS)

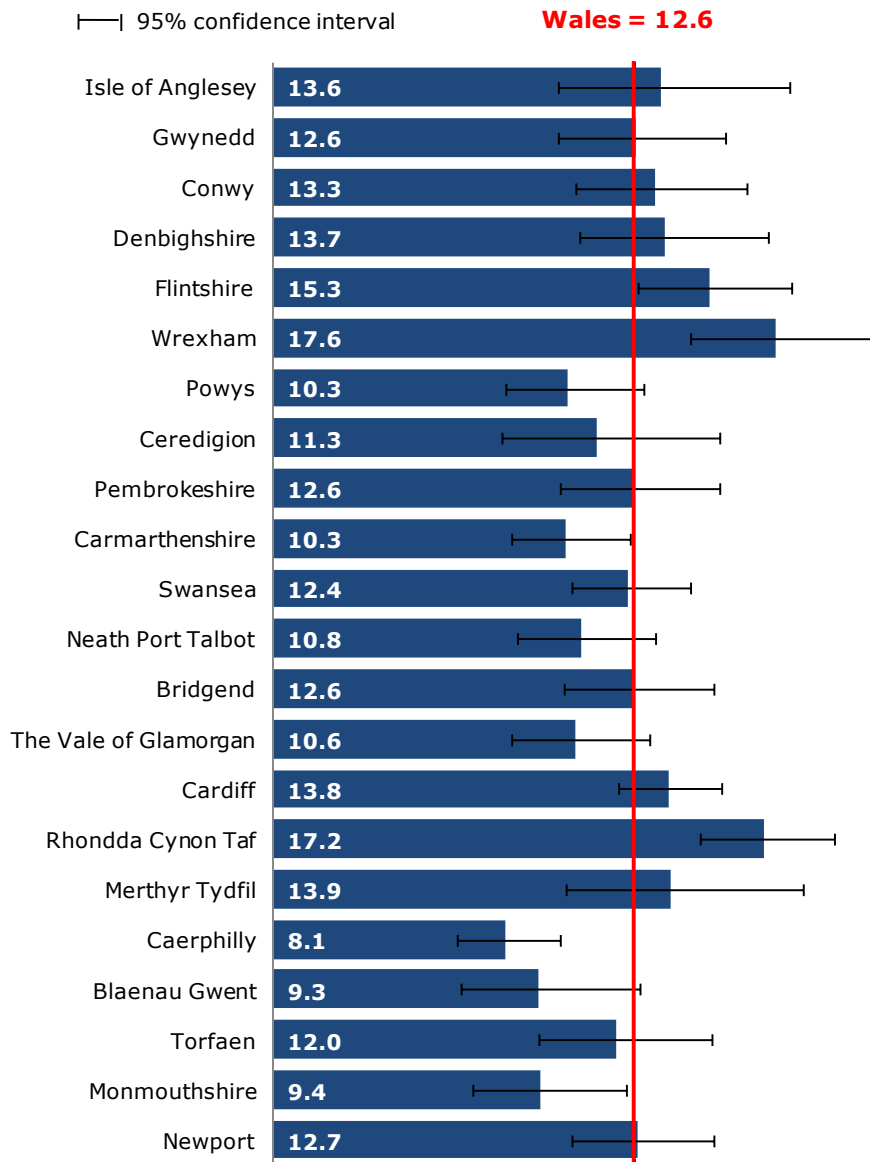


\* Rate per 1,000 females aged 13 - 15

† ONS has suppressed data where the number of conceptions was less than five

**Abortion rate per 1,000 females aged under 18\*, Wales local authorities, 2011-13**

Produced by Public Health Wales Observatory, using abortions data and MYE (ONS)



\* Rate per 1,000 females aged 15 - 17