



GIG
CYMRU
NHS
WALES

Iechyd Cyhoeddus
Cymru
Public Health
Wales

Surveillance: **Surgical Site Infection (SSI)**

Report: **Annual Report**

Time period: **1st January to 31st December 201'**

Health Board: **Cwm Taf Health Board**

Content: **Pg 2 - Introduction**

Orthopaedic SSI Surveillance

Pg 3 - All Wales Summary

Pg 4 - All Wales Results

Caesarean Section SSI Surveillance

Pg 6 - All Wales Summary

Pg 7 - All Wales Results

Pg 8 - References

Pg 9 - Appendices

Appendix I – Health Board Orthopaedic SSI Results

Appendix II – Health Board Caesarean Section SSI Results

Issued by: **Welsh Healthcare Associated Infection Programme (WHAIP)**

Issue date: **-th A Um201(**

INTRODUCTION

Surgical site infections (SSI) are a substantial cause of mortality and morbidity among hospitalised patients. Studies on orthopaedic surgical site infections have shown them to result in considerable increases in lengths of stay, high re-hospitalisation rates, and significant reductions in health-related quality of life^{1,2}. SSI is the second most common infection following a Caesarean section within a group of patients who are generally considered to be young, fit and well females³. Complications of both surgery have high human and financial costs^{1,2,4}.

The following annual rate report is a summary of information provided by the six Health Boards in Wales performing orthopaedic surgery and / or caesarean section procedures. The report includes data captured both during the hospital stay and post-discharge. The surveillance incorporates data collected by clinical teams (and midwives for c section surveillance) and uses internationally agreed definitions⁴, allowing Welsh data to be compared with and be incorporated into other international databases, such as the ECDC SSI database⁵.

The purpose of this report is to provide an all Wales trend rate report of infections over time and for individual Health Boards to have the opportunity to monitor their own trends over time.

1. ORTHOPAEDIC SSI SURVEILLANCE

ALL WALES SUMMARY

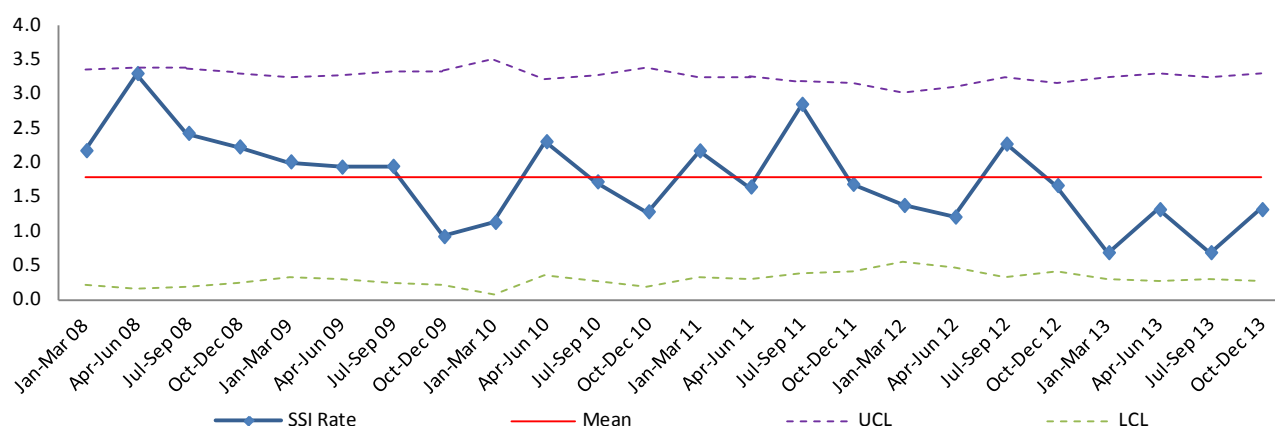
- This annual report covers SSI associated with elective primary hip arthroplasty and elective primary knee arthroplasty.
- A total of 2688 questionnaires were received for hip arthroplasties in 2013. 2675 (99%) of forms could be further analysed for determining the overall SSI rate for 2013.
- 3 inpatient infections and 28 post-discharge infections were detected following hip arthroplasties in 2013, giving a crude overall SSI rate of 1.2%. This rate has decreased since 2012 (1.6%).
- A total of 2973 questionnaires were received for knee arthroplasties in 2013. 2962 (99%) of forms could be further analysed for determining the overall SSI rate for 2013.
- 13 inpatient infections and 28 post-discharge infections were detected following knee arthroplasties in 2013, giving a crude overall SSI rate of 1.4%. This rate is similar to 2012 (1.9%).
- Annual / quarterly trend rates (2008 – 2013) have shown elective primary hip arthroplasty rates to decrease between 2008 and 2010, increase slightly in 2011, but continue to decrease again after this time.
- Annual / quarterly trend rates (2008 – 2013) have shown elective primary knee arthroplasty rates have decreased since 2008 with approximately a 57% reduction in the rate.

ALL WALES RESULTS

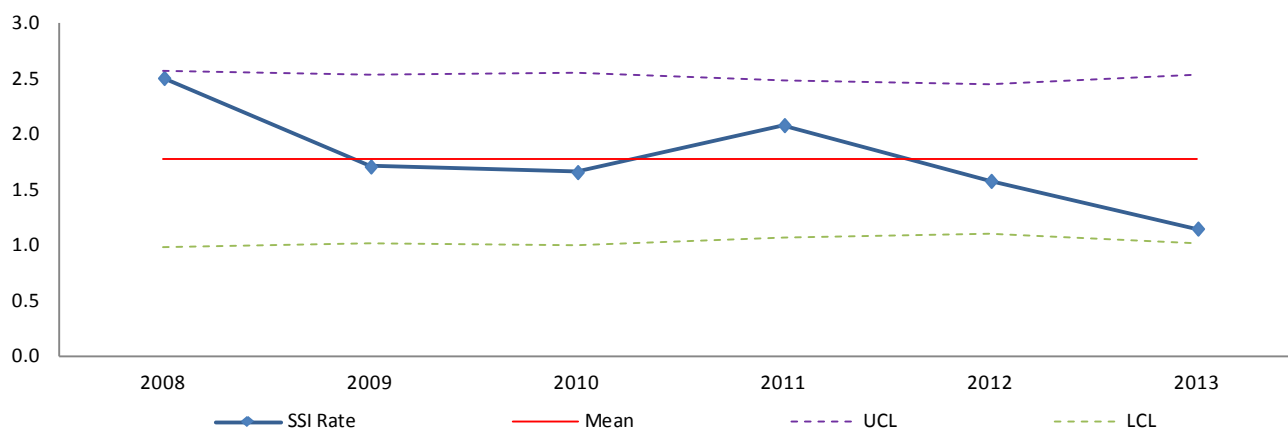
All Wales orthopaedic SSI rates for the period 01/01/2013 - 31/12/2013

Mandatory procedure	Number of forms received	Number of valid forms received	Number of inpatient SSI	Number of post-discharge SSI	Overall SSI Rate
Elective primary hip arthroplasty	2688	2675	3	28	1.2%
Elective primary knee arthroplasty	2973	2962	13	28	1.4%
Total	5661	5637	16	56	1.3%

All Wales elective primary hip arthroplasty overall quarterly SSI rates for the period 01/01/2008 - 31/12/2013



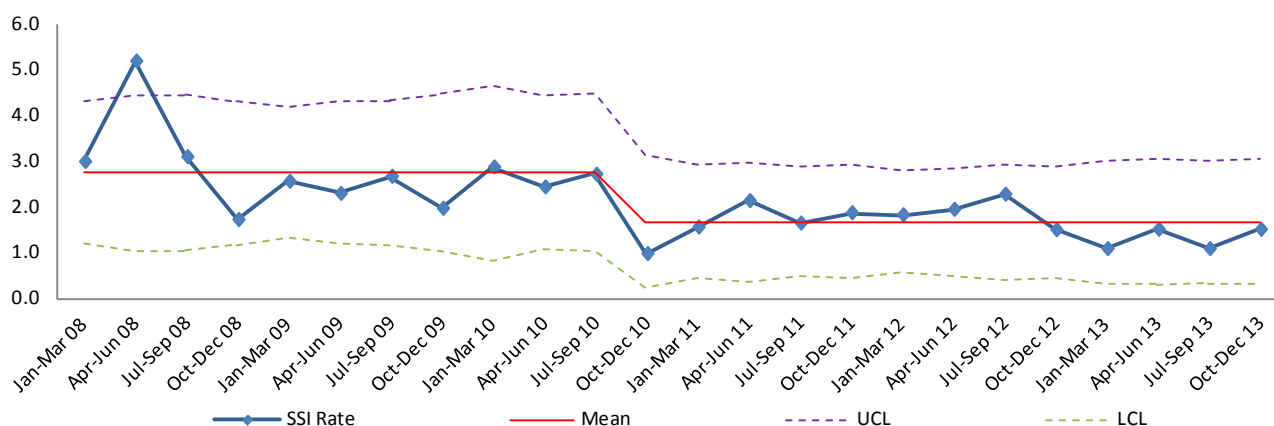
All Wales elective primary hip arthroplasty annual overall SSI numbers and rates for the period 01/01/2008 - 31/12/2013



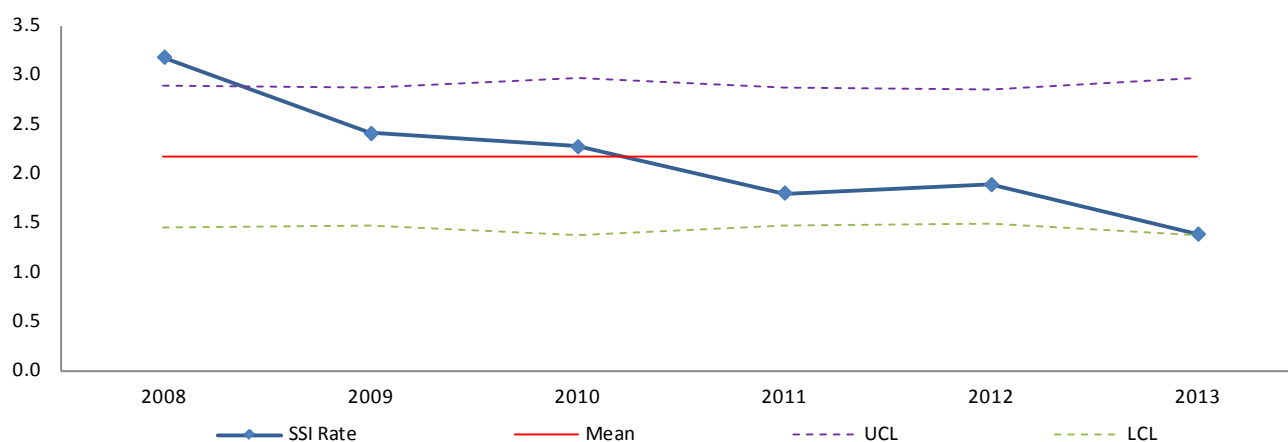
Year	Number of valid forms received	Number of overall SSI
2008	2545	64
2009	2794	48
2010	2639	44
2011	3110	65
2012	3526	56
2013	2675	31

N.B. These numbers may differ from the previously published annual reports if more forms have been received after the annual report for that time period was published

All Wales elective primary knee arthroplasty overall quarterly SSI rates for the period 01/01/2008 - 31/12/2013



All Wales elective primary knee arthroplasty annual overall SSI numbers and rates for the period 01/01/2008 - 31/12/2013



Year	Number of valid forms received	Number of overall SSI
2008	3650	116
2009	3951	95
2010	3039	69
2011	3832	69
2012	4190	79
2013	2962	41

N.B. These numbers may differ from the previously published annual reports if more forms have been received after the annual report for that time period was published

2. CAESAREAN SECTION SSI SURVEILLANCE

ALL WALES SUMMARY

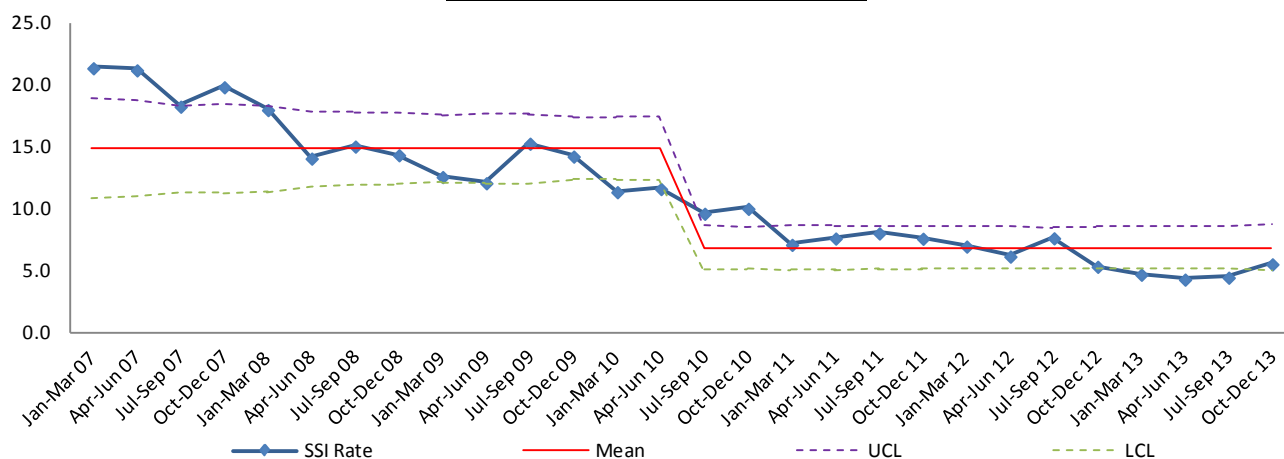
- This annual reports covers SSI associated with lower and upper uterine segment c section procedures and excludes c section hysterectomy.
- A total of 7862 questionnaires were received for 2013. 7687 (98%) of forms could be further analysed for determining the overall SSI rate for 2013.
- 27 inpatient SSI and 343 post discharge SSI were detected for 2013, giving a crude overall SSI rate of 4.8%. This is approximately a 38% decrease in the rate when compared to 2013 (6.6%).
- Annual / quarterly trend data over time has shown the SSI rate to decrease since 2007. Furthermore the overall SSI rate has decreased by 76% when comparing data for 2013 with 2007.

ALL WALES RESULTS

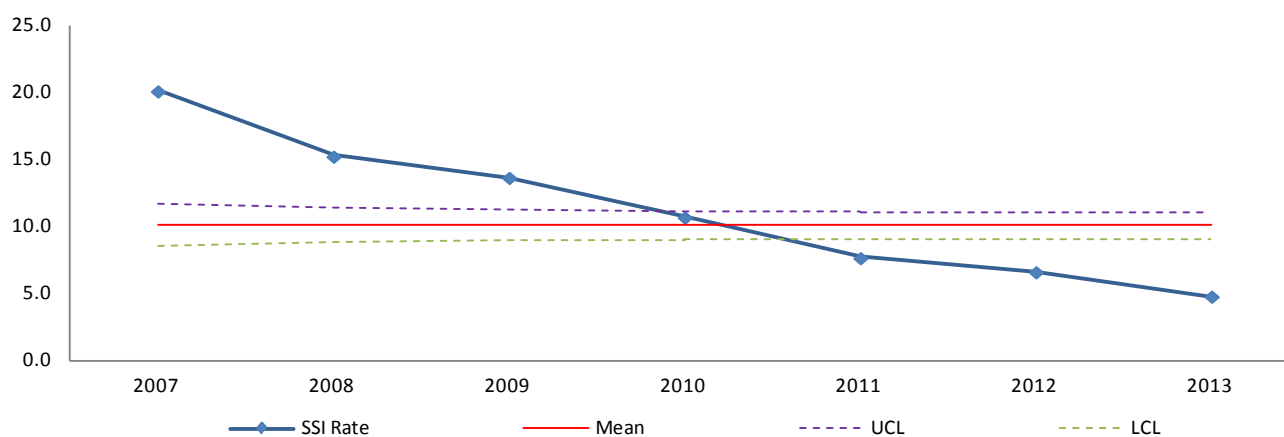
All Wales caesarean section SSI rate for the period 01/01/2013 - 31/12/2013

Number of forms received	Number of valid forms received	Number of inpatient SSI	Number of post-discharge SSI	Overall SSI Rate
7862	7687	27	343	4.8%

All Wales caesarean section overall quarterly SSI rates for the period 01/01/2007 - 31/12/2013



All Wales caesarean section overall annual SSI numbers and rates for the period 01/01/2007 - 31/12/2013



Year	Number of valid forms received	Number of overall SSI
2007	3318	668
2008	4855	741
2009	6221	851
2010	7344	787
2011	7607	585
2012	8081	536
2013	7687	370

N.B. These numbers may differ from the previously published annual reports if more forms have been received after the annual report for that time period was published

REFERENCES

1. Whitehouse JD *et al.* The impact of SSI following orthopaedic surgery at a community hospital and a university hospital: Adverse quality of life, excess length of stay and extra cost. *Infection Control & Hospital Epidemiology* 2002; 23: 183-189.
2. O'Donoghue MA & Allen KD. Costs of an outbreak of wound infections in an orthopaedic ward. *Journal of Hospital Infection* 1992; 22: 73-79.
3. Plowman *et al.* The Socio-economic Burden of Hospital Acquired Infection .Public Health Laboratory Service 1999, London.
4. Horan T *et al.* CDC Definitions of Surgical Site Infections, 1992: A modification of CDC Definitions of Surgical Wound Infections. *Infection Control & Hospital Epidemiology* 1992; 13: 606-608.
5. Hospitals in Europe Link for Infection Control through Surveillance (HELICS). Available at: www.helics.univ-lyon1.fr/home.htm

APPENDIX I

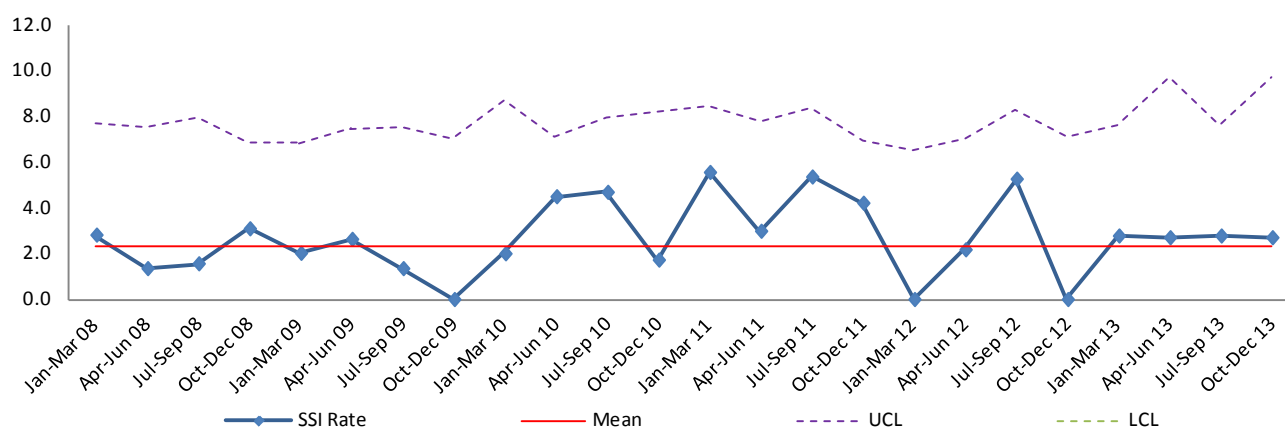
ORTHOPAEDIC SSI SURVEILLANCE

Cwm Taf Health Board

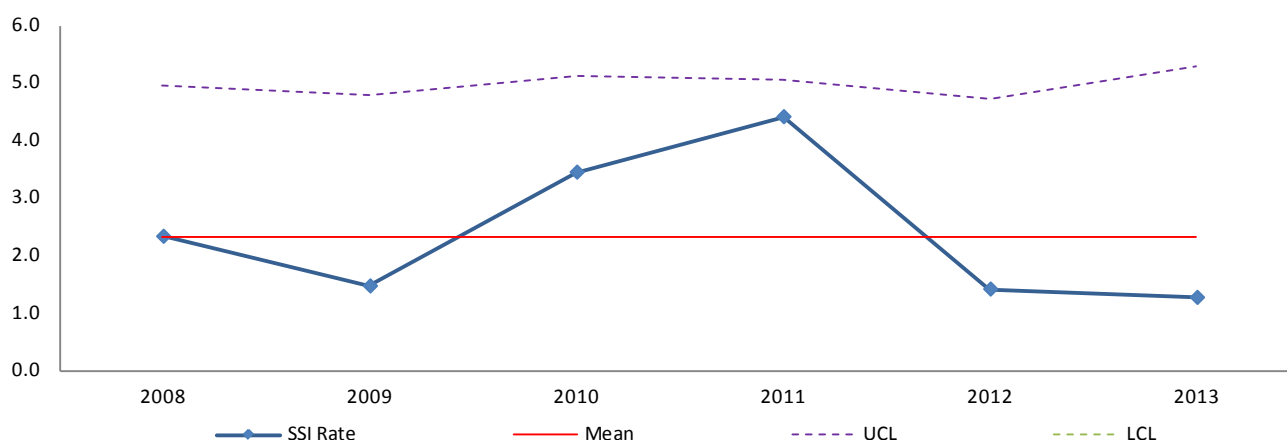
Cwm Taf Health Board orthopaedic SSI rates for the period
01/01/2013 - 31/12/2013

Mandatory procedure	Number of forms received	Number of valid forms received	Number of inpatient SSI	Number of post-discharge SSI	Overall SSI Rate
Elective primary hip arthroplasty	236	236	0	3	1.3%
Elective primary knee arthroplasty	336	336	0	5	1.5%
Total	572	572	0	8	1.4%

Cwm Taf Health Board elective primary hip arthroplasty overall quarterly SSI rates for the period 01/01/2008 - 31/12/2013



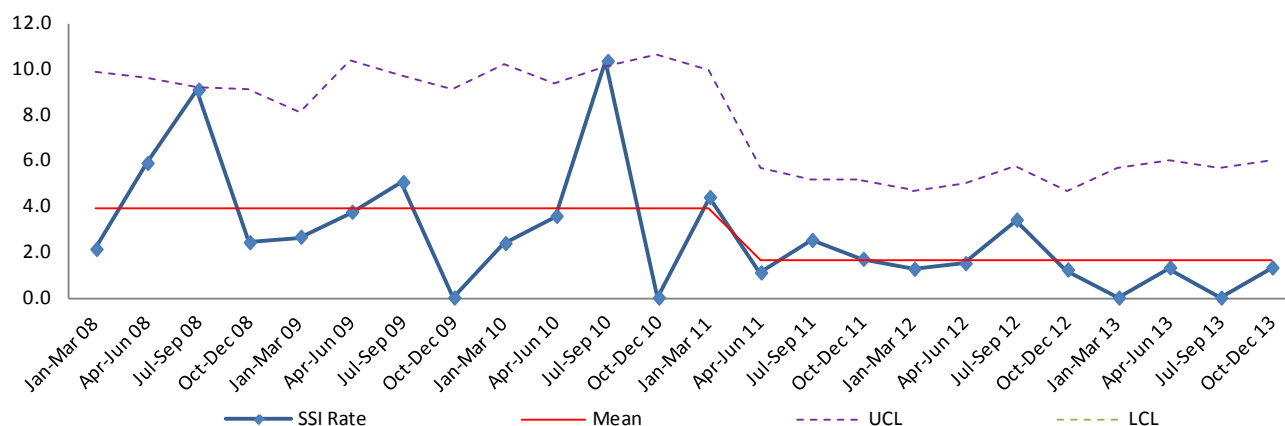
Cwm Taf Health Board elective primary hip arthroplasty overall annual SSI rates and numbers for the period 01/01/2008 - 31/12/2013



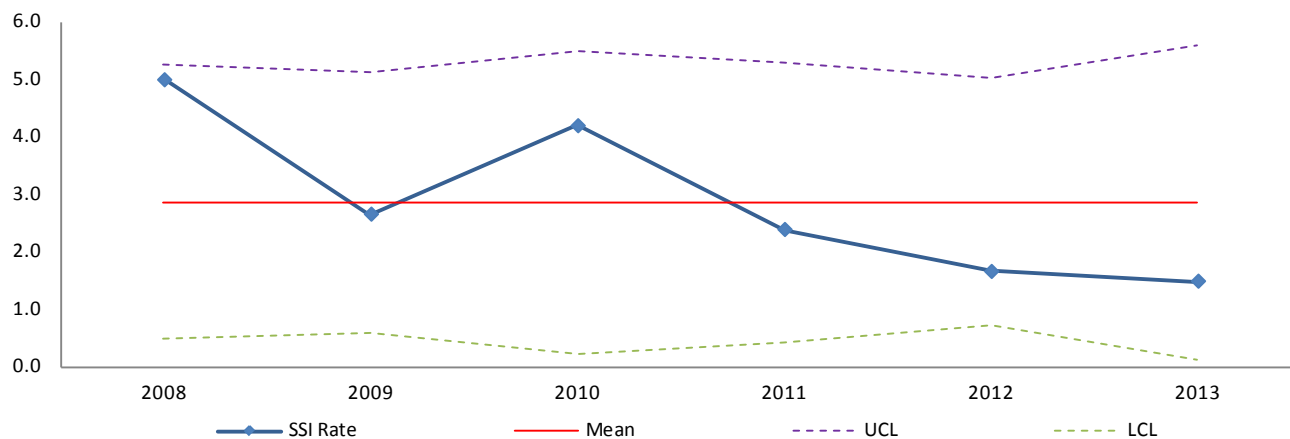
Year	Number of valid forms received	Number of overall SSI
2008	300	7
2009	340	5
2010	261	9
2011	272	12
2012	353	5
2013	236	3

N.B. These numbers may differ from the previously published annual reports if more forms have been received after the annual report for that time period was published

Cwm Taf Health Board elective primary knee arthroplasty overall quarterly SSI rates for the period 01/01/2008 - 31/12/2013



Cwm Taf Health Board elective primary knee arthroplasty overall annual SSI rates and numbers for the period 01/01/2008 - 31/12/2013



Year	Number of valid forms received	Number of overall SSI
2008	441	22
2009	490	13
2010	358	15
2011	419	10
2012	543	9
2013	336	5

N.B. These numbers may differ from the previously published annual reports if more forms have been received after the annual report for that time period was published

APPENDIX II

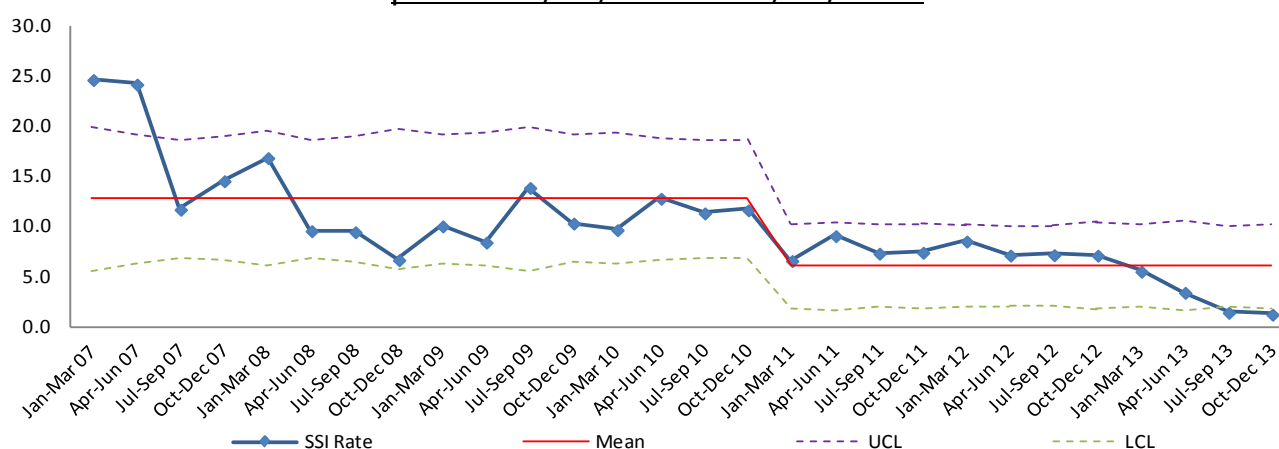
CAESAREAN SECTION SSI SURVEILLANCE

Cwm Taf Health Board

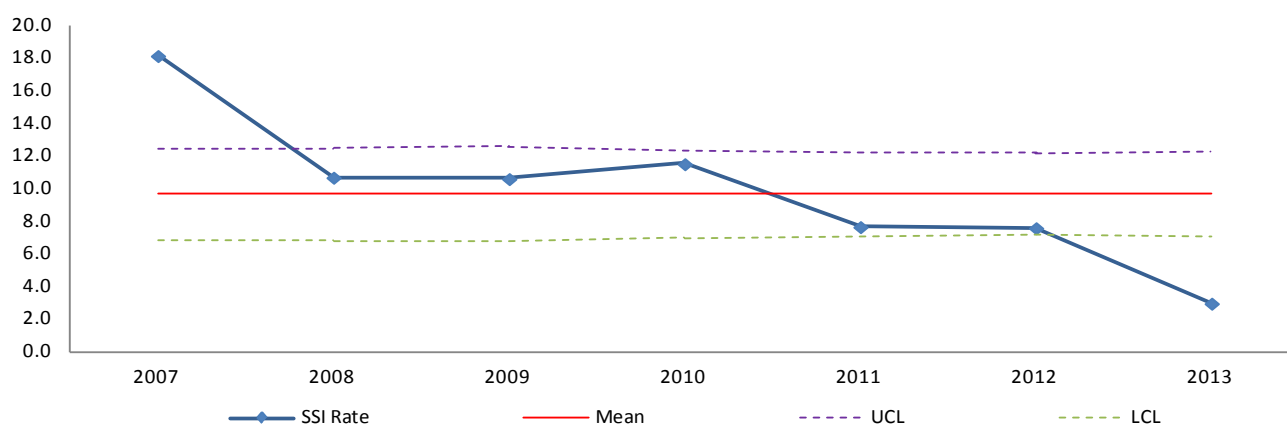
Cwm Taf Health Board caesarean section SSI rates for the period
01/01/2013 - 31/12/2013

Number of forms received	Number of valid forms received	Number of inpatient SSI	Number of post-discharge SSI	Overall SSI Rate
1179	1170	0	35	3.0%

Cwm Taf Health Board caesarean section overall quarterly SSI rates for the
period 01/01/2007 - 31/12/2013



Cwm Taf Health Board caesarean section overall annual SSI rates and numbers
for the period 01/01/2007 - 31/12/2013



Year	Number of valid forms received	Number of overall SSI
2007	1007	183
2008	980	105
2009	922	98
2010	1083	125
2011	1171	90
2012	1234	94
2013	1170	35

N.B. These numbers may differ from the previously published annual reports if more forms have been received after the annual report for that time period was published