



GIG  
CYMRU  
NHS  
WALES

Iechyd Cyhoeddus  
Cymru  
Public Health  
Wales

# Cynllunio ar gyfer Tywydd Garw

Cynhadledd Iechyd Cyhoeddus Cymru

22/10/2025

# Planning for Adverse Weather

Welsh Public Health Conference

22/10/2025

---



**GIG**  
CYMRU  
**NHS**  
WALES

Iechyd Cyhoeddus  
Cymru  
Public Health  
Wales

# Cadeirydd Chair

**Dr Marc Davies,**  
**Ymgynghorydd Iechyd Cyhoeddus, Bwrdd Iechyd Prifysgol Bae Abertawe**  
**Consultant in Public Health, Swansea Bay University Health Board**

---



GIG  
CYMRU  
NHS  
WALES

Iechyd Cyhoeddus  
Cymru  
Public Health  
Wales

# Cynllun Tywydd Garw ac Iechyd i Gymru

## An Adverse Weather and Health Plan for Wales

Alice Munro,

Ymgynghorydd Iechyd Amgylcheddol y Cyhoedd, Iechyd Cyhoeddus Cymru

Consultant in Environmental Public Health, Public Health Wales

---

# Nodau

## **Ystyried pa mor effeithiol oedd ymateb eich sefydliad i ddigwyddiadau'r tywydd yn y gorffennol:**

- Sut ydych chi wedi ymdopi â digwyddiadau'r tywydd yn y gorffennol?
- Beth oedd y gwersi a ddysgwyd a pha gamau a gymerwyd?

## **Elfennau craidd cynllun tywydd garw ac iechyd**

- Sut ydyn ni'n cyfleu'r angen i atal effeithiau'r tywydd yn hytrach na pharatoi at ymateb?

## **Archwilio mapio rhanddeiliaid:**

- Pwy yw ein rhanddeiliaid allweddol a'n partneriaid cyflenwi?
- Pa gyfleoedd pellach sydd ar gyfer cyd-ddatblygu'r Cynllun Tywydd Garw ac Iechyd?

# Aims

## **Consider how effective your organisations response was to past weather events:**

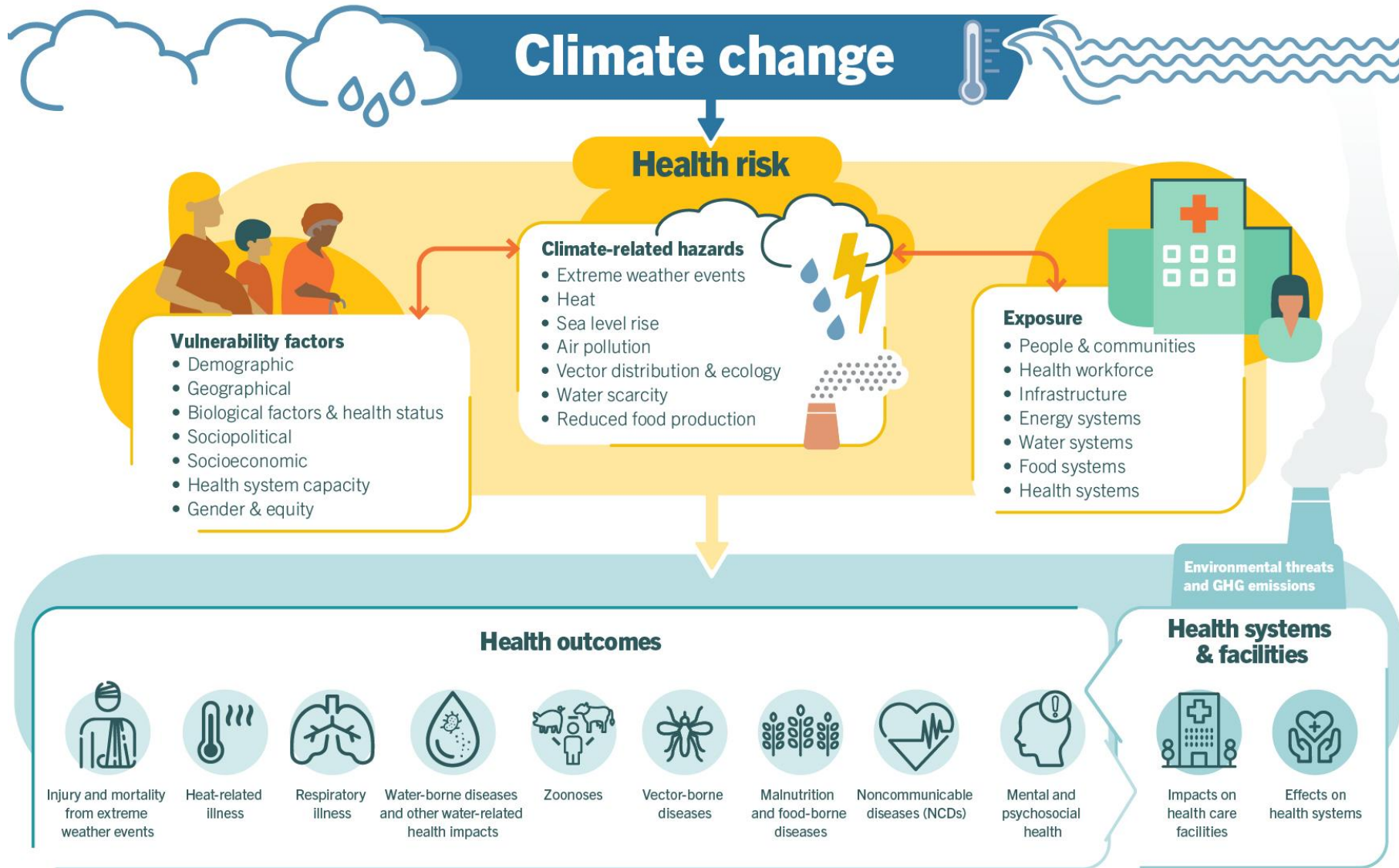
- How have you coped with past weather events?
- What were the lessons learnt and what action has been taken

## **Core elements of an adverse weather and health plan**

- How do we communicate the need to prevent exposure rather than prepare to respond?

## **Explore stakeholder mapping:**

- Who are our key stakeholders and delivery partners?
- What further opportunities are there for co-development of the AWHP?



# Effeithiau tywydd garw Adverse weather impacts

W News Latest Wales News Neath

## Fire crews battle six different wildfires in south Wales



Town evacuated after mountain fire in North Wales

## Patients moved after heavy rain causes flooding at Wales' biggest hospital

Parts of Wales' biggest hospital the University Hospital of Wales in Cardiff was hit by flooding after heavy rain hit the country



## Landslip warning and flooding follow heavy rain in Wales



## Storm Gerrit: Thousands lose power as 85mph winds hit Wales

28 December 2023



## Welshpool flash flooding closes hospital birth centre

# Pam mae newid hinsawdd yn broblem i'r gwasanaethau iechyd? Why is climate change a problem for health services?



**Tarfu ar gwasanaeth  
Service disruption**



**Pwysau cynddol  
Increased pressure**



**Mwy o afiechydon  
More illnesses**




- Mae'n creu risg ac ansicrwydd ynghylch cyflenwi gwasanaethau
- Mae'n rhywbeth anhysbys (diffyg data) ac fe'i hystyrir yn ddigwyddiad brys.
- Nid yw'n rhan o'n cynllunio blynyddol nac o'n ffordd o feddwl
- Mae'n cael ei ystyried yn rhywbeth pell o ran amser. Rydyn ni'n canolbwyntio ar faterion uniongyrchol ac ar argyfyngau
- Cyfyngiadau o ran adnoddau

- Creates risk and uncertainty around service delivery
- It's an unknown quantity (lack of data) and viewed as an emergency occurrence
- It doesn't form part of our annual planning or thinking
- It's considered time remote, we focus on crisis and immediate issues
- Resource constraints


## Projected changes in climate of Cardiff

Current warming

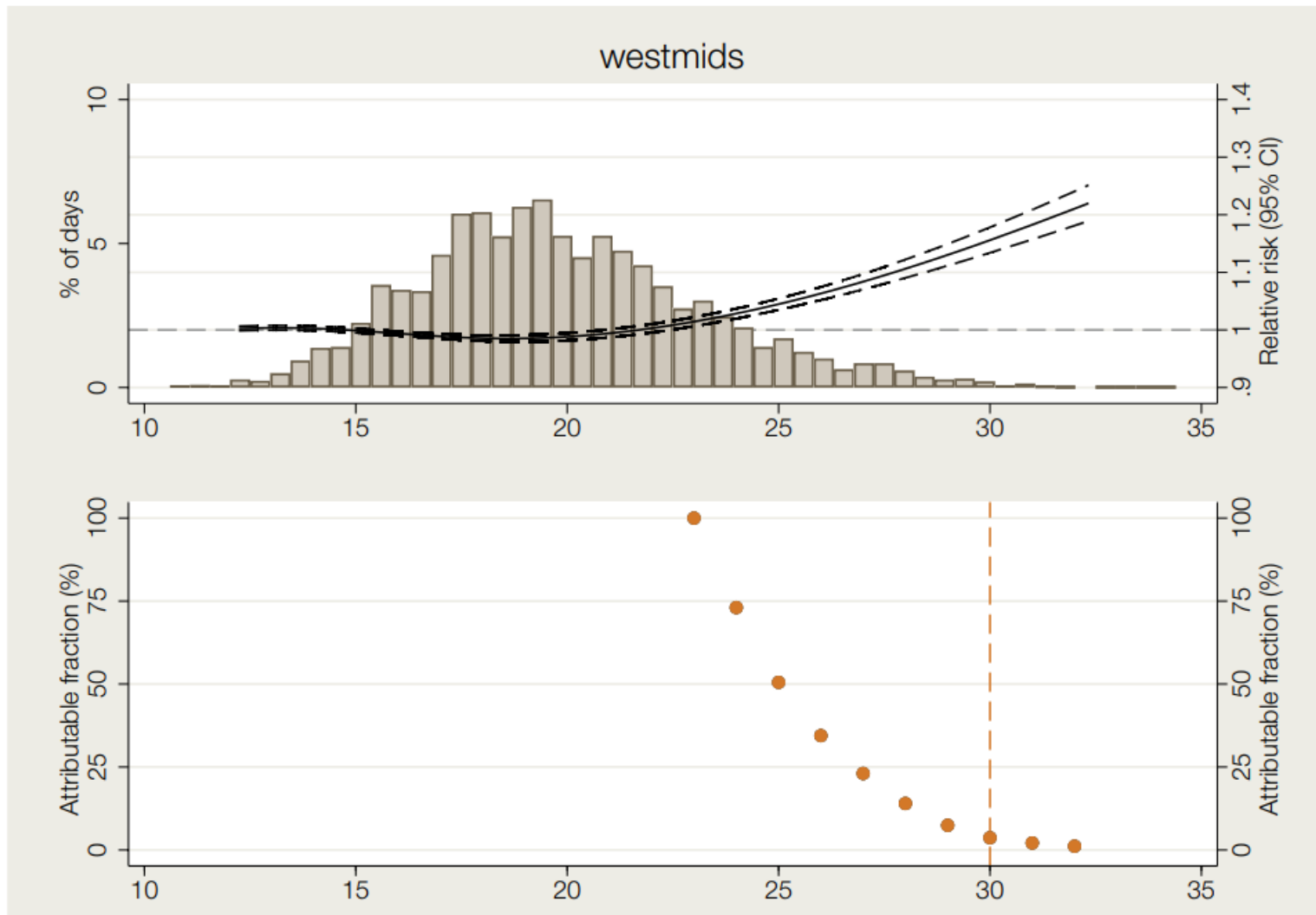
2050s

		0.6°C GWL Baseline 1981-2000	1.0°C GWL Recent Past 2001-2020	1.5°C GWL Paris Agreement	2°C GWL Guidance: Prepare	4°C GWL Guidance: Assess risks
	<b>TEMPERATURE</b>	°C	°C	°C change	°C change	°C change
	Summer Maximum Temperature	28.7 28.2 to 29.0	30.7 29.8 to 31.8	+2.9 +0.5 to +3.4	+3.3 +2.2 to +4.7	+7.0 +5.9 to +9.2
	<b>PRECIPITATION</b>	mm/day	mm/day	% change	% change	% change
	Summer Precipitation Rate	2.61 2.61 to 2.63	2.45 2.03 to 2.73	-8 -22 to 0	-16 -25 to -9	-36 -51 to -28
	Winter Precipitation Rate	4.19 4.18 to 4.20	4.46 4.25 to 4.97	+8 0 to +20	+9 0 to +15	+25 +19 to +37

Source: Met Office local authority climate reports

	0.6°C GWL Baseline 1981-2000	1.0°C GWL Recent Past 2001-2020	1.5°C GWL Paris Agreement	2°C GWL Guidance: Prepare	4°C GWL Guidance: Assess risks
 <p><b>Summer Days*</b> Daily maximum temperature &gt; 25°C</p> <p>High daytime temperatures with health impacts for vulnerable people at risk of hospital admission or death. Transport disruption – e.g. track buckling on railways. Can also indicate periods of increased water demand.</p>	<p><b>10</b> 10 to 11</p>	<p><b>19</b> 17 to 24</p>	<p><b>22</b> 18 to 29</p>	<p><b>27</b> 23 to 35</p>	<p><b>56</b> 46 to 73</p>

**Figure 3.4** Adjusted temperature-mortality relationship in the West Midlands and heat-attributable fractions





1. Lleihau'r amlygiad / Reduce exposure
2. Cynllunio hirdymor / Long-term planning



3. Parodrydd y system iechyd a gofal cymdeithasol / Preparedness of the health and social care system.



4. Cynllun gwytodaeth iechyd sy'n gysylltiedig a pheryglon / A hazard-related health information plan
5. Systemau rhybuddio cywir a phrydlon / Accurate and timely alert systems

6. Gwylidwriaeth a gwerthuso amser real / Real-time surveillance and evaluation.

7. Gofal arbennig i grwpiau poblogaeth agored I niwed / Particular care for vulnerable population groups.

Adferiad  
Recovery

# Ymateb Iechyd Cyhoeddus Cymru

- Mae mynd i'r afael ag effeithiau newid hinsawdd ar iechyd y cyhoedd yn flaenoriaeth strategol newydd
- Map trywydd i nodi ein blaenoriaethau hyd at 2035
  - Datgarboneiddio
  - Addasu
  - Gwyliadwriaeth
  - Ymchwil
- Seiliedig ar dysiolaeth

# Public Health Wales response

- Tackling the public health effects of climate change is a new strategic priority
- Routemap to set out our priorities to 2035
  - Decarbonisation
  - Adaptation
  - Surveillance
  - Research
- Underpinned by evidence

# Newid Hinsawdd yng Nghymru: Aseiad o'r Effaith ar Iechyd

- Nodi effeithiau posibl newid hinsawdd ar iechyd a llesiant yng Nghymru
- Nodi sut y bydd newid hinsawdd yn effeithio ar fywydau pobl
- Darparu tystiolaeth ar gyfer integreiddio iechyd a chynllunio ymaddasu a llunio polisiau
- Cefnogi sefydliadau, llunwyr polisi a'r rhai sy'n gwneud penderfyniadau a llywio cynlluniau, polisiau a rhaglenni
- Llywio rhaglen waith Iechyd Cyhoeddus Cymru a gwaith cynllunio cyrff cyhoeddus ar gyfer y dyfodol



# Climate Change in Wales: Health Impact Assessment

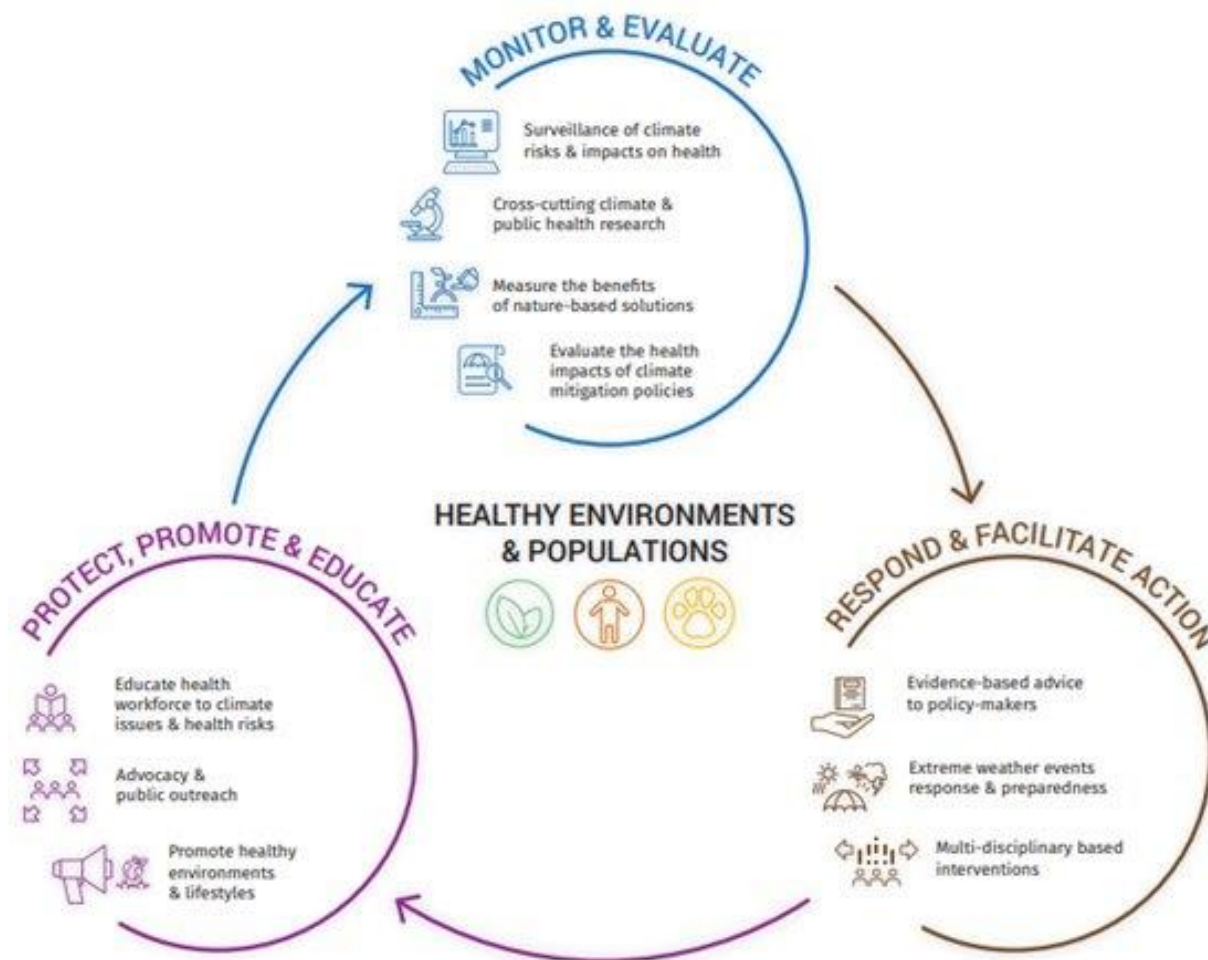
- To identify the potential health and well-being impacts of climate change in Wales
- To identify how climate change will affect people's lives
- Provide evidence for integrating health into adaptation planning and policy making
- To support organisations, decision and policy makers and inform plans, policies and programmes
- To inform Public Health Wales work programme and public bodies planning for the future

# Map trywydd

1. Ymateb a hwyluso'r gweithredu
2. Hyrwyddo, diogelu ac addysgu
3. Monitro a gwerthuso

# Route map

1. Respond & facilitate action
2. Promote, protect & educate
3. Monitor & evaluate





GIG  
CYMRU  
NHS  
WALES

Iechyd Cyhoeddus  
Cymru  
Public Health  
Wales

# Trafodaethau grŵp

# Group Discussions





GIG  
CYMRU  
NHS  
WALES

Iechyd Cyhoeddus  
Cymru  
Public Health  
Wales

Gweithio gyda'n gilydd  
i greu Cymru iachach

Working together  
for a healthier Wales

---