

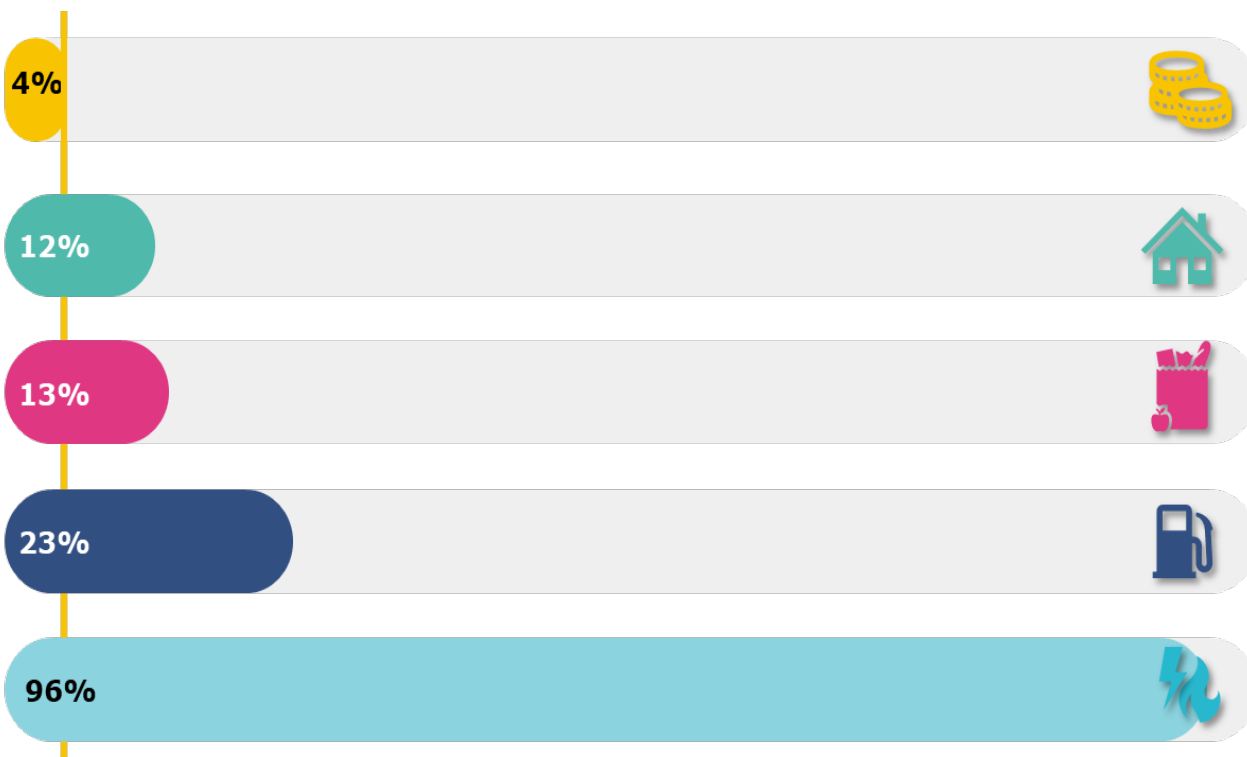
Cost of living: A public health issue

Public Health Wales Board

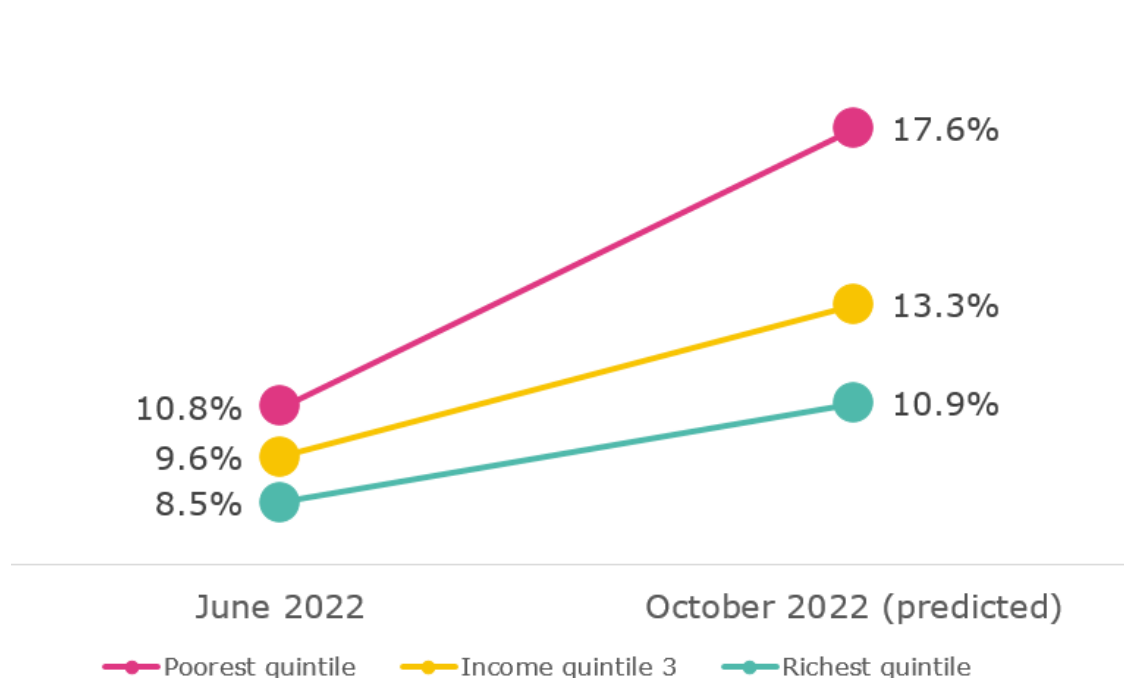
29 September 2022

What is the cost of living crisis?

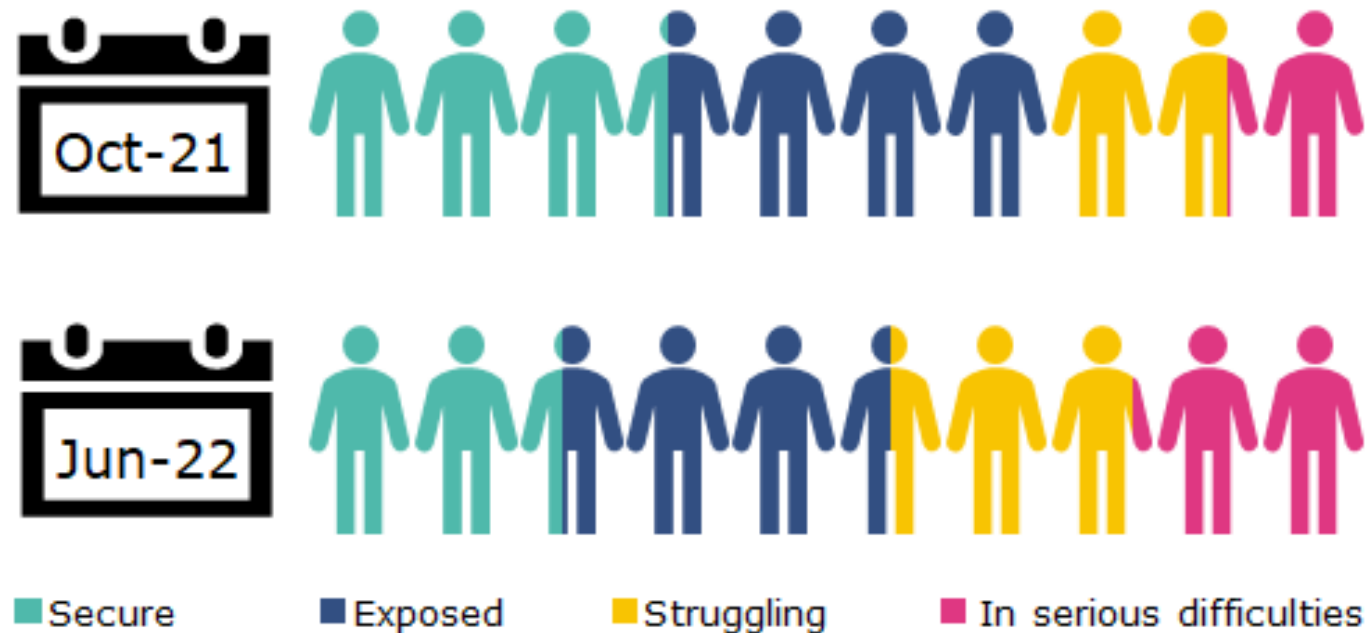
Wage increases compared to increases in the price of food, housing, fuel and energy prices



Inflation by household income in June 2022 and predicted rate in October 2022

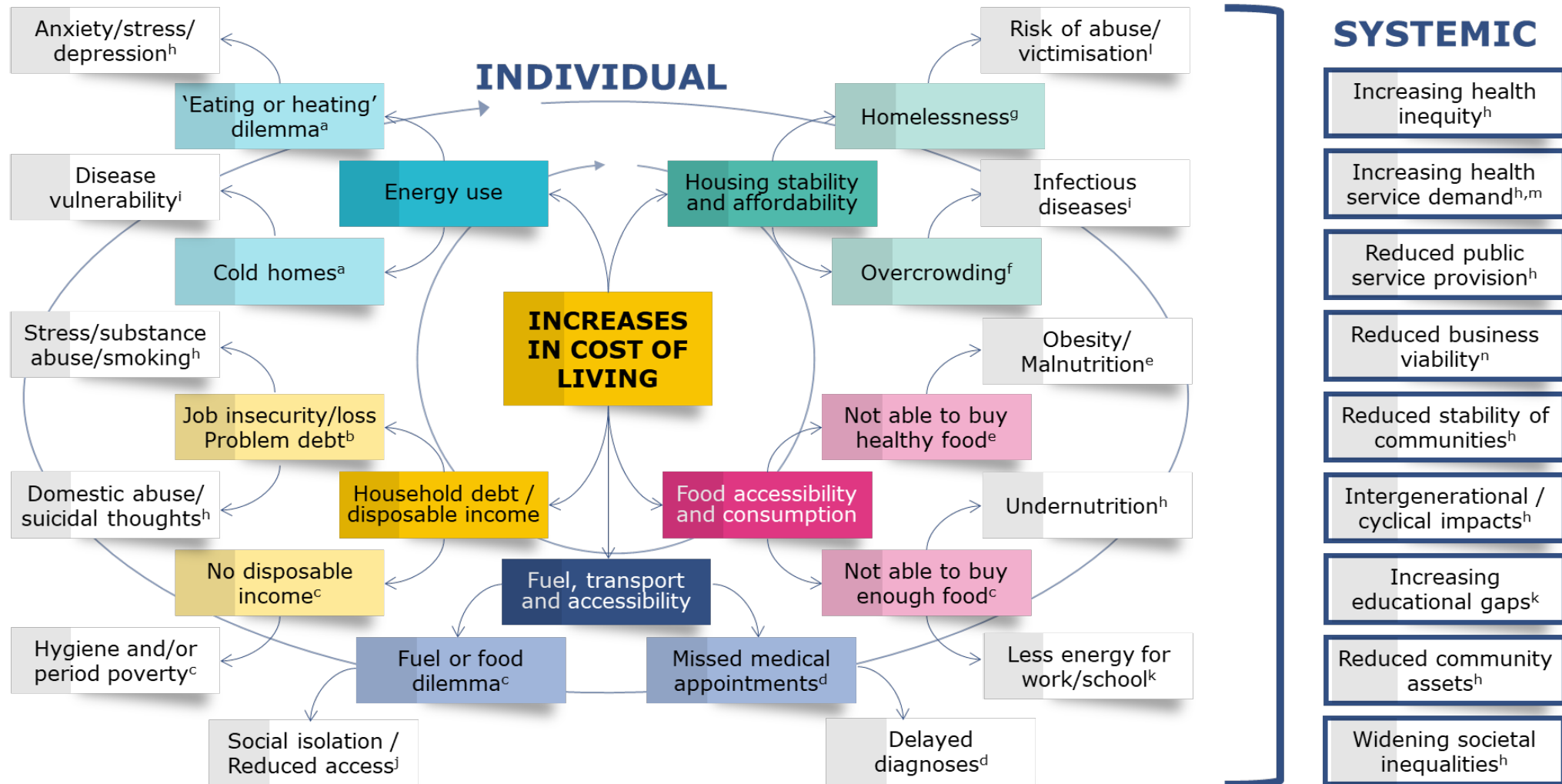


What does the cost of living crisis mean for the Welsh population?



Proportion of households in four financial well-being categories in Wales (October 2021 vs June 2022)

How does cost of living link to health?



Infographic developed by Manon Roberts & Louisa Petchey, PHW

What does this mean for public health in Wales?

Affects all the essential conditions for healthy life

- Income security and social protection
- Social and human capital
- Employment and working conditions
- Living conditions
- Health services

Widening health inequalities

Widening **geographic inequalities** e.g. rural v urban areas

Intergenerational impacts

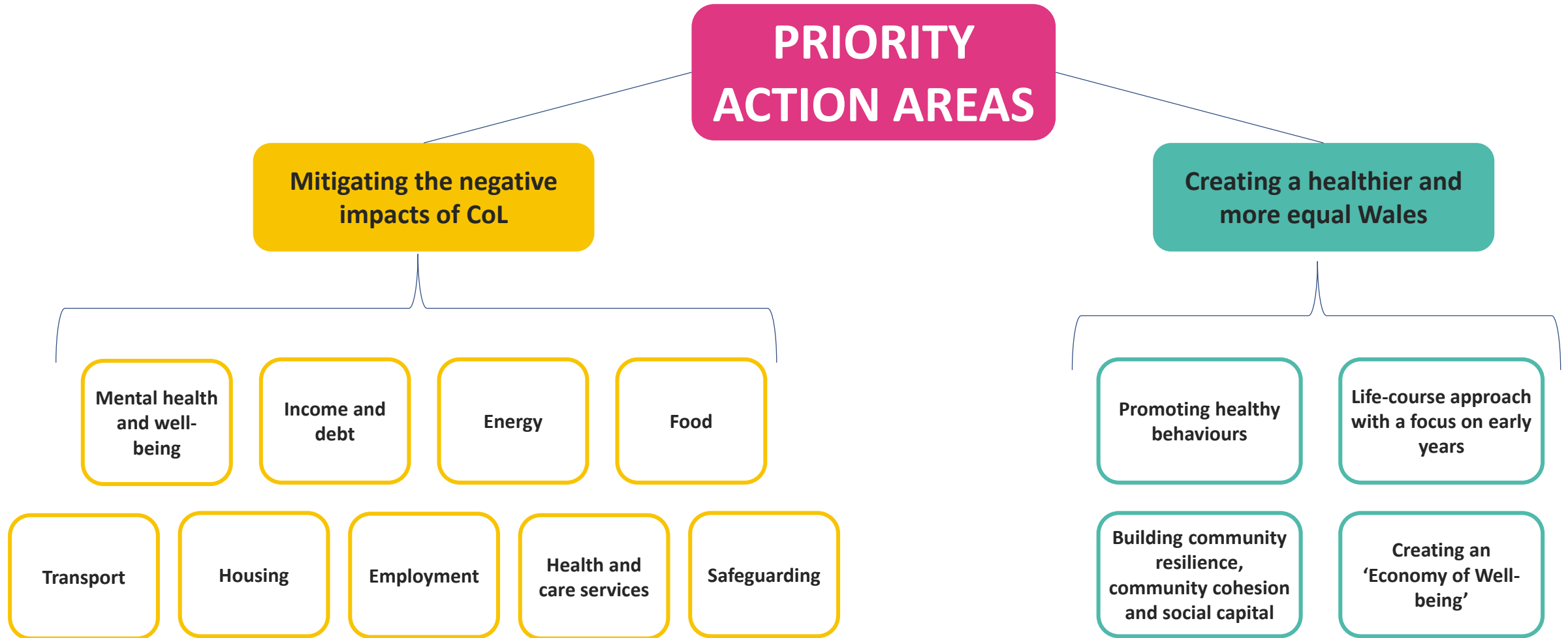


Cyclical impact of increasing health inequality on population health and health services

How should we respond?



Policy action areas



Public Health Wales response

Partnership working

- Voluntary sector collaboration
- Working with health and care system e.g. Foundational Economy
- Supporting winter preparedness

Data, research and intelligence

- International horizon scanning
- Report to Welsh Government
- Rapid monitoring through dashboard

Supporting our staff and service users

- Signposting service users on support for attending appointments
- Supporting staff financial, and mental well-being

Guided by an **enabling environment of 'health in all policies'**

- WFG Act; Socio-economic Duty; Social Services and Well-being Act; Public Health Act