

# Deep Dive: Population Health Programmes

Quality, Safety and Improvement Committee

Tuesday 25<sup>th</sup> November 2025

Jim McManus, National Director of Health and Wellbeing

---

# We have 20 Major Strategic Programmes in Health and Wellbeing Directorate on Population Health

Wider Determinants of Health

Tobacco Control

Drugs, Alcohol and Gambling

New major national programme on gambling (part of corporate change portfolio)

New major needs assessment for 2025

Tackling Diabetes Together (Part of corporate change portfolio)

Nutrition and Obesity (Pathway and Systems)

Nutrition and Obesity (Children and School Food)

Physical Activity

Healthy Settings

Health and Education

Mental and Community Wellbeing

- First 1000 Days
- Social Marketing and Public Information
- Primary Care Prevention
  - Example: Mandatory Quality Improvement Project for CVD in Primary Care
- Prevention Based Health and Care
- Primary Care Transformation
- Healthcare Public Health
- Dental Public Health
- Shaping Places for Wellbeing
- Building a Healthier Wales
- Fair work & educational attainment

# We have 20 Major Population Health Programmes and 64 programmes overall in HWB

- . They span
  - . Wider determinants of health
  - . Health Improvement
  - . Primary Care
- . Today provides an overview of our common Quality Approach
- . We invite Committee to consider those areas it wants to do full deep dives on

---

<sup>1</sup> . *Cover Report and full list of programmes attached as appendices*

# Background Information

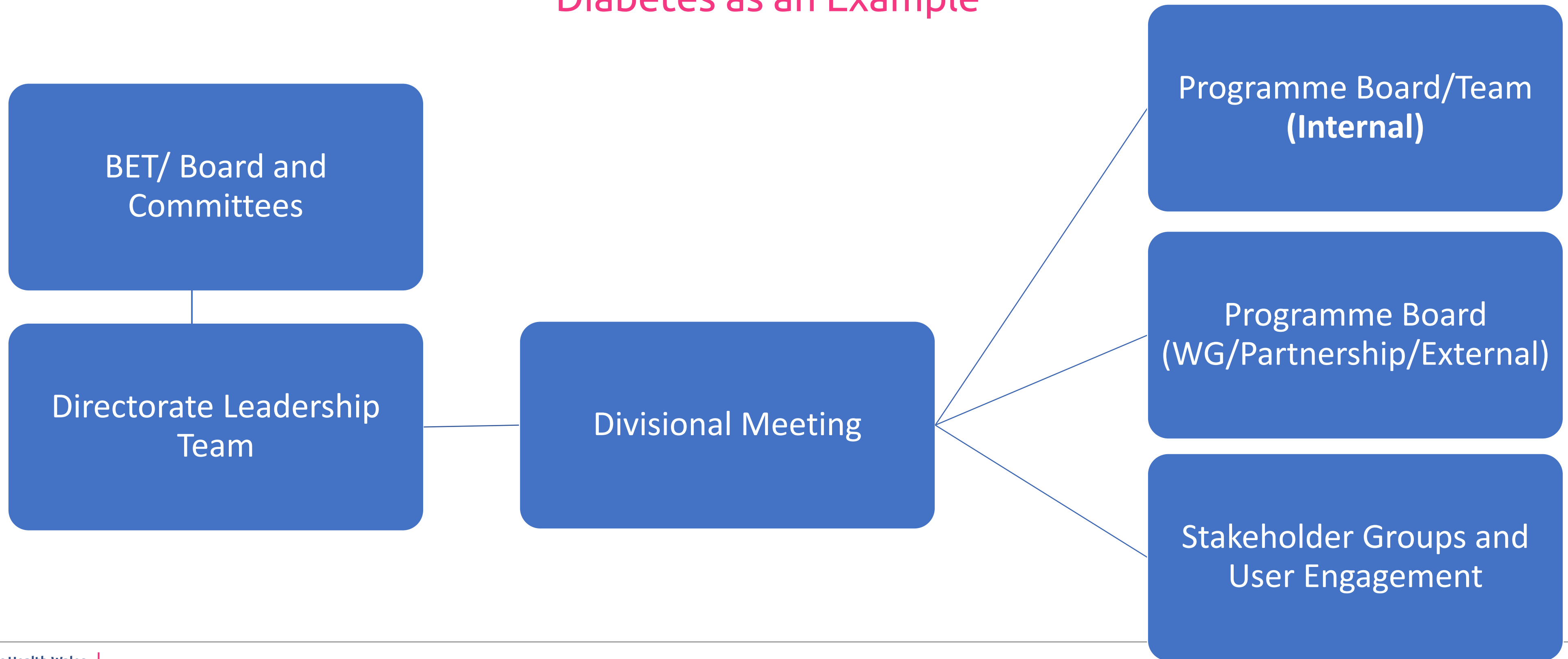
## Who we are and what we do...

The Health and Wellbeing Directorate plays a central role in Public Health Wales' mission to improve healthy life expectancy and reduce inequalities. Our work spans prevention, health improvement, and system leadership. We are embedding the Duty of Quality across all programmes, aligning with the six domains of healthcare quality. A detailed list of programmes and a cover report accompany this paper.

Quality Domains	Relevance to your service / function / programme
<b>Safe</b>	Audits and case reviews (e.g. Help Me Quit, Dental Services) ensure safety and learning.
<b>Timely</b>	Dashboard reporting and performance systems support timely oversight.
<b>Effective</b>	Programmes like Tackling Diabetes Together and First 1000 Days are evidence-based and outcome-focused
<b>Efficient</b>	Value-based approaches and digital systems improve resource use.
<b>Equitable</b>	Focus on reducing inequalities through targeted interventions and stakeholder engagement. Working more on digital now to improve channels and access
<b>Person Centred</b>	Service user feedback and co-production shape programme design.

# Governance and Accountability Arrangements

## Diabetes as an Example



# Key Achievements

- . Embedded Duty of Quality across all HWB programmes.
- . Single approach to quality and risk management within Directorate
- . Established programme of using audit
- . Developed digital dashboards and automated reporting.
- . Delivered audits and reviews across services (e.g. Greening Primary Care, Dental).
- . Strengthened system leadership in prevention (e.g. Diabetes, Schools, DsPH).
- . Initiated programme reviews to align with 4Es and strategic goals.
  
- . ***See also our 2024-25 Impact Statement At Appendix***

# Approach to Embedding Duty of Quality



# What we have not done today

- . Because of the sheer number of programmes we have not today included
  - . Details on Performance
  - . Detail on Risks
- . We invite the committee to consider what specific programmes it wants to dive into
- . *See also our 2024-25 Impact Statement At Appendix 1 to the cover report*

# Service Review (1)

We have a programme of work underway on services where we are asking leads to review each of their major programmes and projects, and include external peer challenge

Service	Review Method	Outcome
Tackling Diabetes Together	Full multi-stakeholder and programme review.	Led to reshaping of programme and focus on new areas of work
Healthy Working Wales	Programme and market audience review	Relaunch of website, new website Refocus of service. New services for employers launched by Minister 12 November 2025
Wider Determinants – Child Poverty	Stakeholder engagement and peer review	Refocus of our work on child poverty to focus on co-ordination and support
Grant-making	Full Audit	Gave substantial assurance but also helped us identify how we could improve. As a result a collaborative group has been set up with UHBs to make the system and process easier
Drug and Alcohol Programmes	Corporate multi directorate group	New drugs needs assessment in draft, identified respective leads corporately, organisation wide co-ordination group established Introducing Sector Led Quality Improvement ethos t

# Service Review (2)

Service	Review Method	Outcome
Social Marketing	Review of outcomes and processes	Improvement in targeting and uptake of smoking cessation services
Whole School Day	Stakeholder Collaborative quality improvement (Sector Led Improvement)	Relaunch of website, new website Refocus of service. New services for employers launched by Minister 12 November 2025

# Service user/population centred health provision story

- **Three Examples showing different ways of population engagement**

- *Lived Experience within the drug and alcohol needs assessment*
- *Tackling Diabetes Together User Engagement*
  - *Hackathon, Point of Diagnosis Pack, Apps*
- *Feedback from Help Me Quit users highlighted the value of personalise support and informed service redesign to improve accessibility and follow-up*



# Programme risks

- Risk of misalignment between programme design and population needs.
- Resource limitations may constrain impact.
- Risks recorded at Directorate level and reviewed regularly.
- Quality risks addressed through audits and peer challenge.



# Next Steps / Future Proofing

- Complete programme reviews and embed findings into IMTP.
- Continue to Build Sector Led Improvement Ethos
- Develop digital Quality Impact Assessment tool.
- Manage Digital Portfolio
- Expand leadership training and innovation support.
- Benchmarking and peer review to continue as part of continuous improvement.



# Asks of the Committee

- Take assurance from the Directorate's approach to embedding the Duty of Quality.
- Support the implementation of programme review findings.
- Endorse the development of digital tools for quality assessment and reporting.



GIG  
CYMRU  
NHS  
WALES

Iechyd Cyhoeddus  
Cymru  
Public Health  
Wales

Gweithio gyda'n gilydd  
i greu Cymru iachach

Working together  
for a healthier Wales