

Public Health Wales – Nationally Focused, Globally Responsible

The WHO CC and IHCC Enhancing International Health Opportunities for Research, Learning and Training

Dr Mariana Dyakova, International Health Lead and Deputy Director,
WHO CC / Policy and International Health at Public Health Wales

KRIC Meeting, 16th June 2022



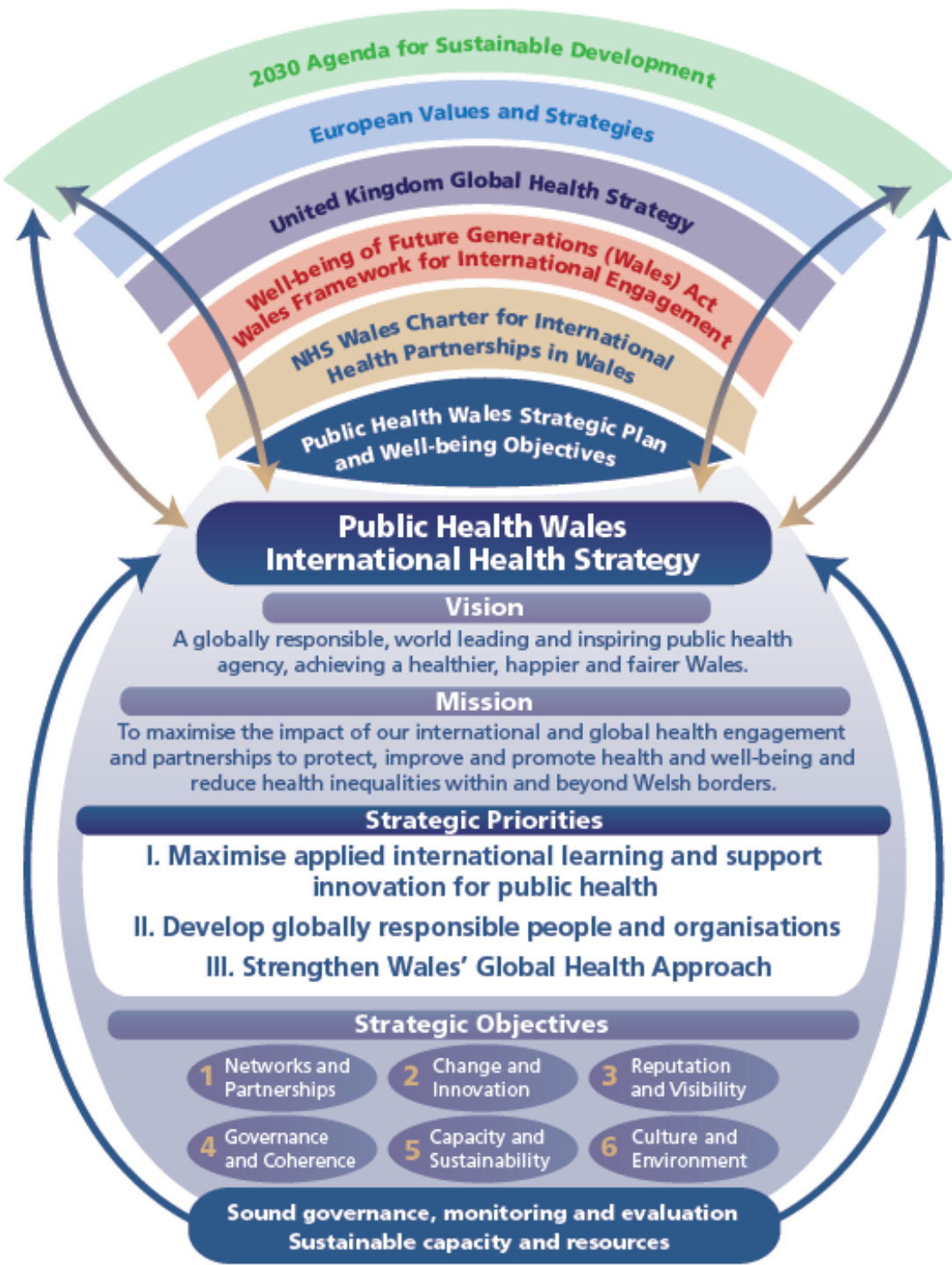
GIG
CYMRU
NHS
WALES

Iechyd Cyhoeddus
Cymru
Public Health
Wales

Canolfan Gydweithredol Sefydliad
Iechyd y Byd ar Fuddsoddi
ar gyfer Iechyd a Llesian



World Health Organization
Collaborating Centre on Investment
for Health and Well-being



International Engagement and Research to Support Knowledge Mobilisation

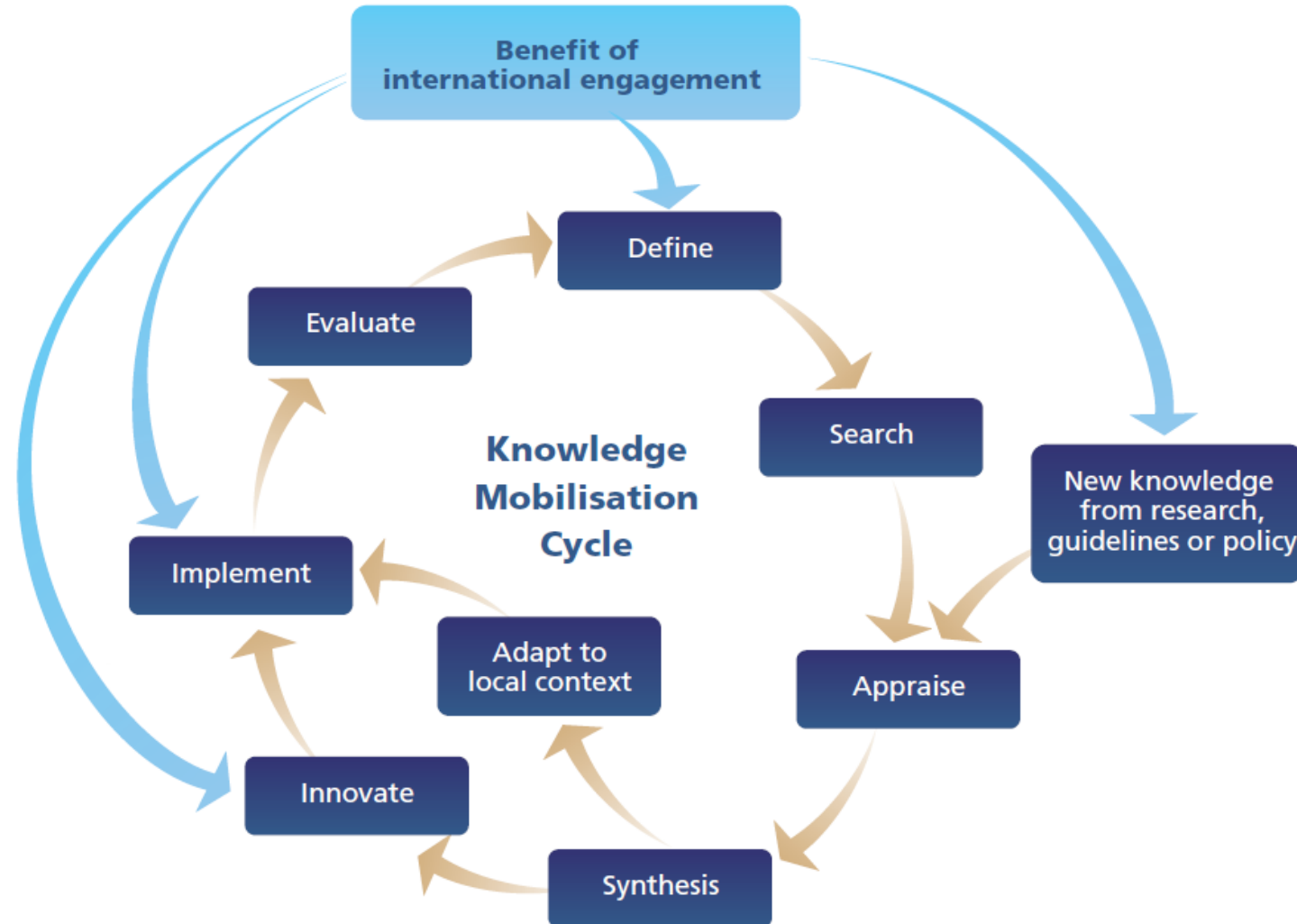
Enabling function

- International Health Strategy
- Knowledge Mobilisation Strategy
- R&D Strategy
- ...



Enabling and facilitating international / global health engagement, partnerships and opportunities for research, training and knowledge mobilisation **across the organisation and beyond**

Capitalising on international knowledge, experience and practice is an integral part of the Knowledge Mobilisation Cycle



WHO CC Re-designation: Work Plan 2022 – 2026

Delivering to the Welsh Government/WHO Memorandum of Understanding

Overview

- The first and only one in its area of work globally, designated in March 2018, re-designated 2022
- Network of more than 800 WHO collaborating centres worldwide across more than 80 countries
- Informs and supports the development of policies, action and solutions to achieve healthy prosperous lives for the current and future generations
- Working across the UK and globally, bringing in and sharing learning, innovation, expertise and good practice, incl. the NHS, National and Local Government, academia, public and third sector

Activities

- 1) Informing and accelerating action and solutions to place health equity at the heart of all policies and investments - **WHESRI**
- 2) Strengthening the case for investment in population wellbeing and health equity towards building an **Economy of Wellbeing**
- 3) Strengthen Health and Equity in All Policies towards achieving **sustainable development** leaving no one behind
- 4) Enhancing understanding and awareness, and driving investment, for building capacity and resilience to prevent **adversity, trauma and injuries across the life course**





GIG
CYMRU
NHS
WALES

Iechyd Cyhoeddus
Cymru
Public Health
Wales



ihcc
International Health Coordination Centre
Canolfan Ryngwladol Cydlynw Iechyd

Role

The IHCC is a whole of Wales NHS platform for information sharing, knowledge exchange, collaboration, and networking.

Achievements 2015-2017

Benchmarking the implementation of the Charter for International Health Partnerships in Wales	Strengthening the role of the Charter Implementation Group	Building and strengthening partnerships with health organisations around the world	Facilitating international collaboration and income generation across the NHS
---	--	--	---

Future Direction

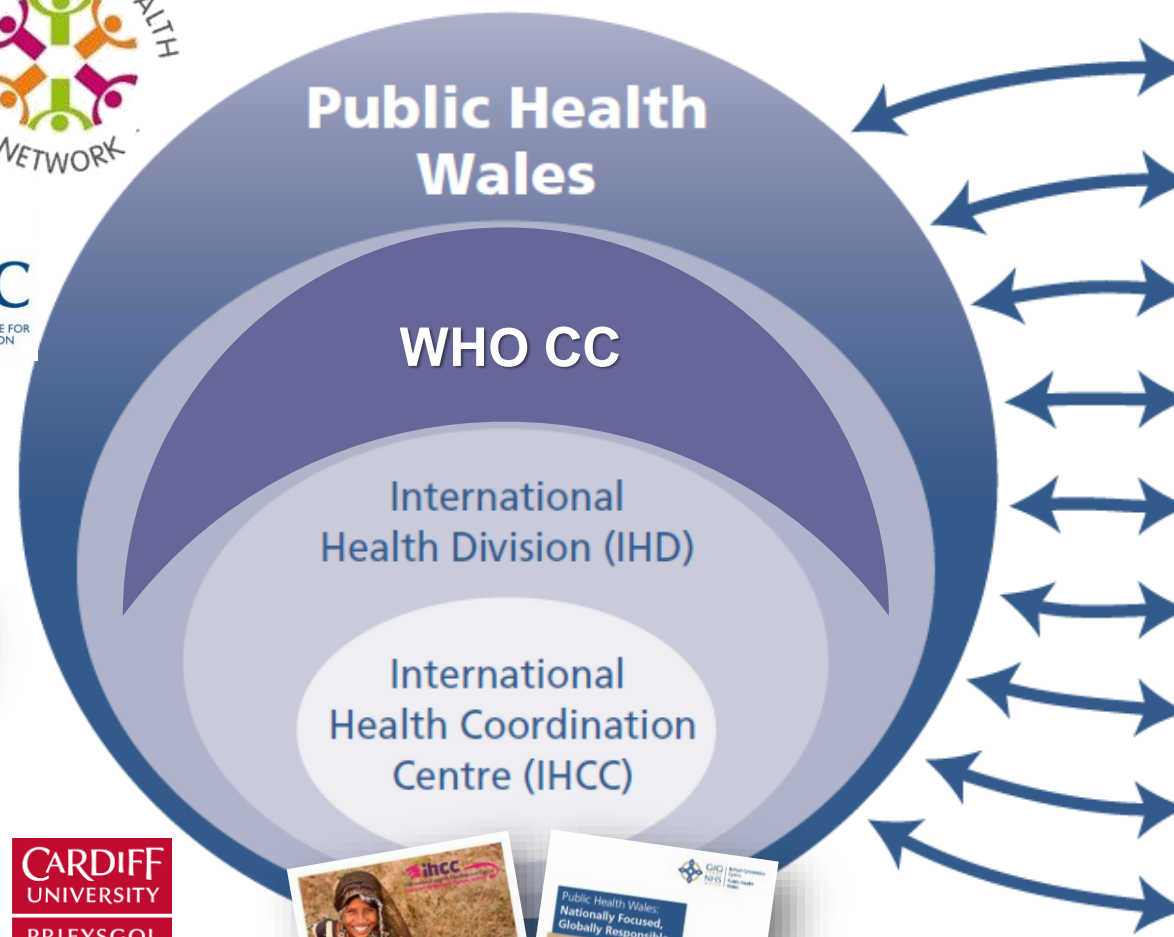
Developing an all-Wales implementation toolkit for the Charter	Evaluating progress made towards Charter implementation	Promoting and enabling Global Citizenship training across NHS Wales and beyond
--	---	--

Supporting the Charter Principles

01 Organisational Responsibilities (OR)	02 Reciprocal Partnership Working (RW)	03 Good Practice (GP)	04 Sound Governance (SG)
--	---	------------------------------	---------------------------------



Global Citizenship eLearning modules



lechyd Cyhoeddus
Cymru
Public Health
Wales

**Canolfan Gydweithredol Sefydliad
Iechyd y Byd ar Fuddsoddi
ar gyfer Iechyd a Llesiant**



**World Health Organization
Collaborating Centre on Investment
for Health and Well-being**

phwwhocc.co.uk



@phwwhocc



Phwwhocc

Thank you!

[World Health Organization Collaborating Centre On Investment for Health and Well-being \(phwwhocc.co.uk\)](http://phwwhocc.co.uk)

Public Health Wales, 2 Capital Quarter, Tyndall Street

Cardiff, CF10 4BZ

www.publichealthwales.org



**GIG
CYMRU
NHS
WALES**

Iechyd Cyhoeddus
Cymru
Public Health
Wales